

# V&V Reference Report

## L2 ASCDS Version : 8.4.3.1

Observation 6724 - L2 Version 2  
Chandra X-Ray Center

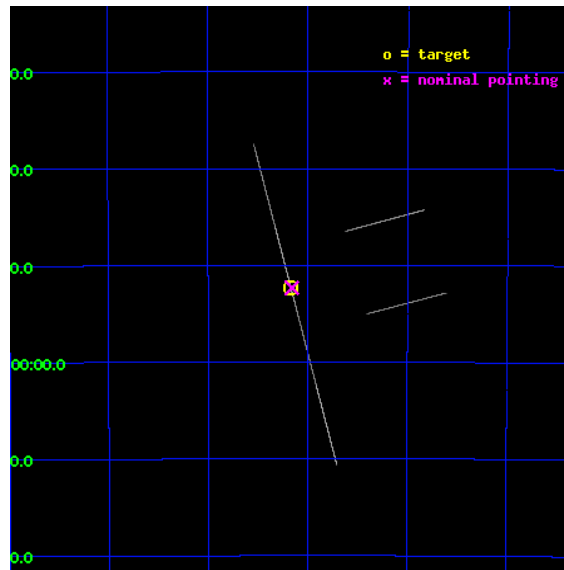
L2 Processing Date : Apr 10 2012

## Contents

<b>1</b>	<b>Front</b>	<b>2</b>
<b>2</b>	<b>OBI</b>	<b>3</b>
2.1	OBI . . . . .	3
2.1.1	Images . . . . .	3
2.1.2	Bias . . . . .	3
2.1.3	Parameters . . . . .	4
2.1.4	Events . . . . .	4
2.2	Compared Parameters . . . . .	5
2.3	Aspect . . . . .	6
2.4	Star Slots . . . . .	9
2.4.1	Slot 3 . . . . .	9
2.4.2	Slot 4 . . . . .	10
2.4.3	Slot 5 . . . . .	11
2.4.4	Slot 6 . . . . .	12
2.4.5	Slot 7 . . . . .	13
2.5	FID Slots . . . . .	14
2.5.1	Slot 0 . . . . .	14
2.5.2	Slot 1 . . . . .	15
2.5.3	Slot 2 . . . . .	16
<b>A</b>	<b>Summary</b>	<b>17</b>
A.1	Status . . . . .	17
A.2	Comments . . . . .	17

# 1 Front

seq_num	500671	Sequence number
obs_id	6724	Observation id
title	TINY HICCUPS TO TITANIC EXPLOSIONS: Tackling Transients in Anomalous X-ray Pulsars	Proposal title
observer	Professor Victoria Kaspi	Principal investigator
object	CXO J164710.2-455216	Source name
ra_targ	251.7925	Observer's specified target RA [deg]
dec_targ	-45.871361	Observer's specified target Dec [deg]
ra_nom	251.78967818971	Nominal RA [deg]
dec_nom	-45.872159397393	Nominal Dec [deg]
roll_nom	255.25408054675	Nominal Roll [deg]
revision	2	Processing version of data
ontime	15181.5	Sum of GTIs [s]
livetime	15122.197265625	Livetime [s]
ontime2	15181.5	Sum of GTIs [s]
ontime3	15181.5	Sum of GTIs [s]
ontime5	15181.5	Sum of GTIs [s]
ontime6	15181.5	Sum of GTIs [s]
ontime7	15181.5	Sum of GTIs [s]
ontime8	15181.5	Sum of GTIs [s]
l2events	319595	Number of level 2 events

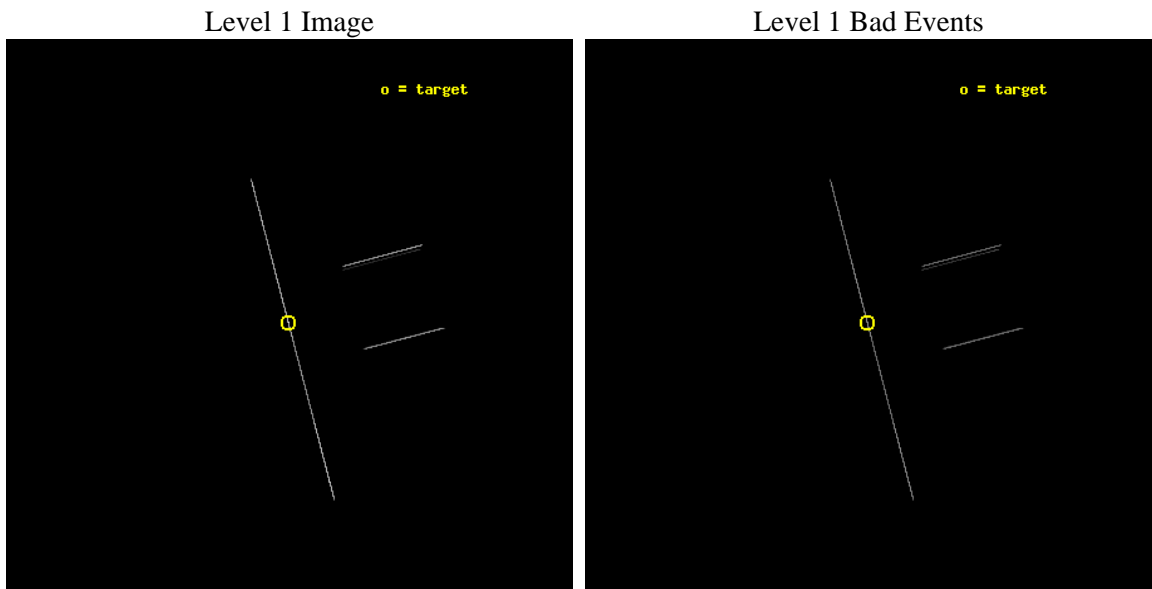




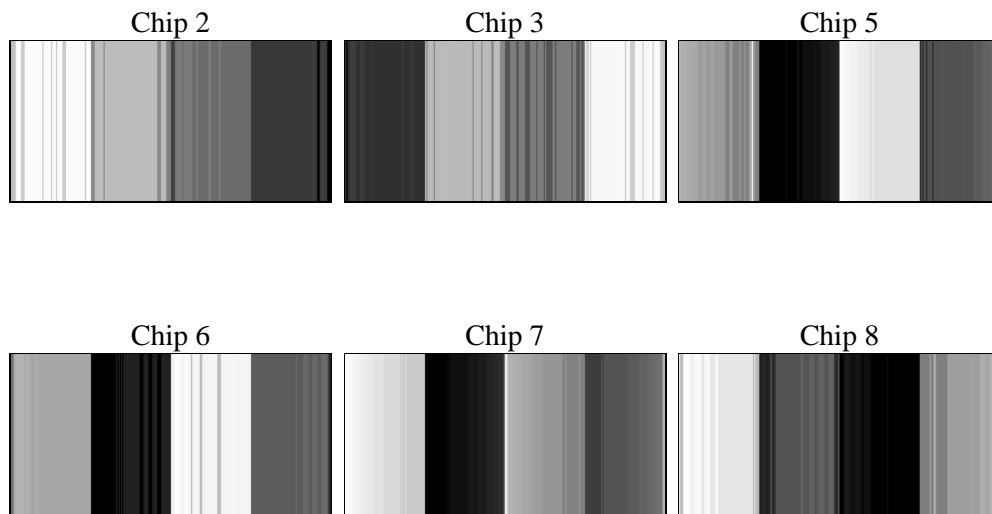
## 2 OBI

### 2.1 OBI

#### 2.1.1 Images



#### 2.1.2 Bias



### 2.1.3 Parameters

obi_num	0	Obi number	sched_exp_time	15000.383000	[s] Scheduled observation exposure time
ascdsver	8.4.3.1	Processing system revision	ontime	15181.5	Sum of GTIs [s]
caldsver	4.4.9	&#160	ontime2	15181.5	Sum of GTIs [s]
date	2012-04-10T09:20:52	Date and time of file creation	ontime3	15181.5	Sum of GTIs [s]
revision	2	Processing version of data	ontime5	15181.5	Sum of GTIs [s]
			ontime6	15181.5	Sum of GTIs [s]
			ontime7	15181.5	Sum of GTIs [s]
			ontime8	15181.5	Sum of GTIs [s]
			l1events	459000	Number of level 1 events

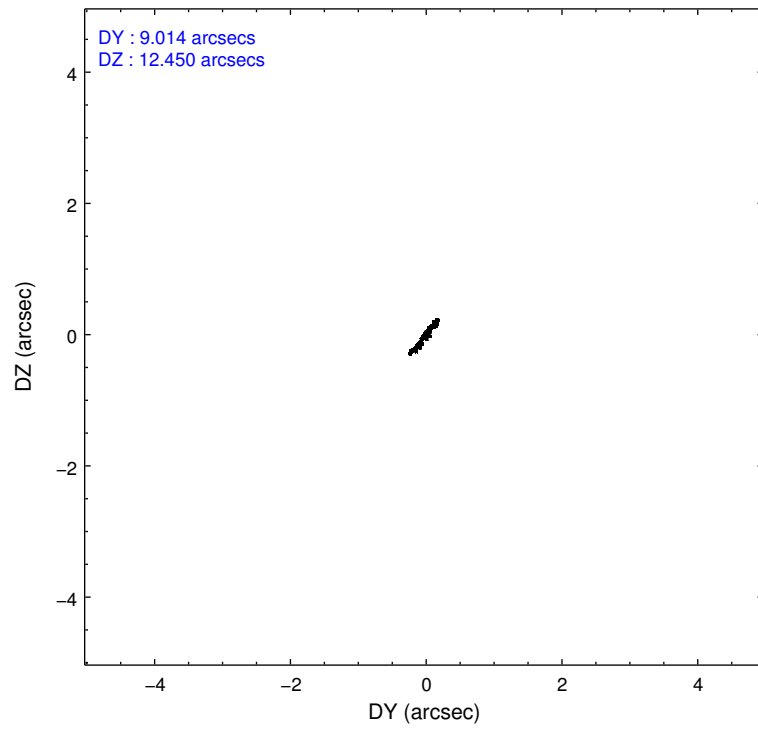
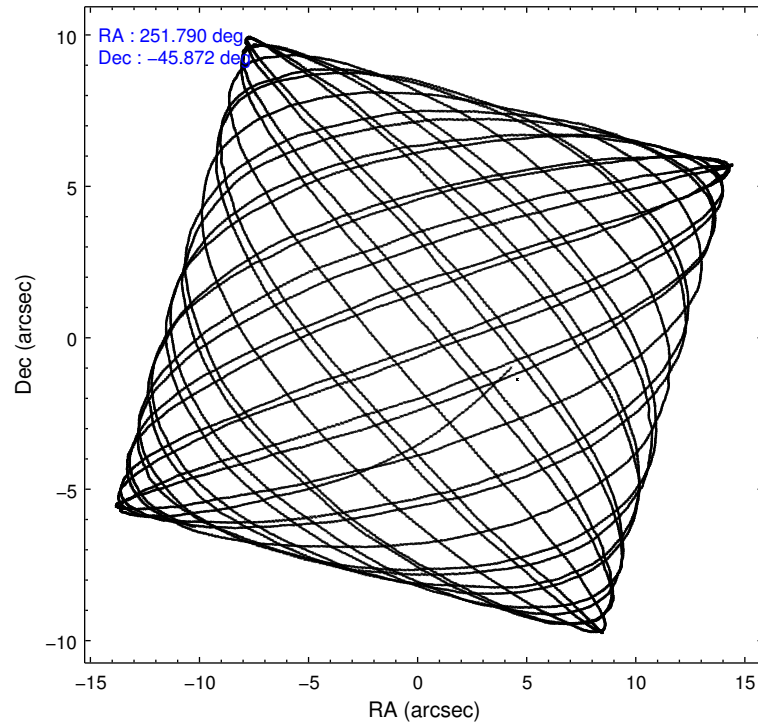
### 2.1.4 Events

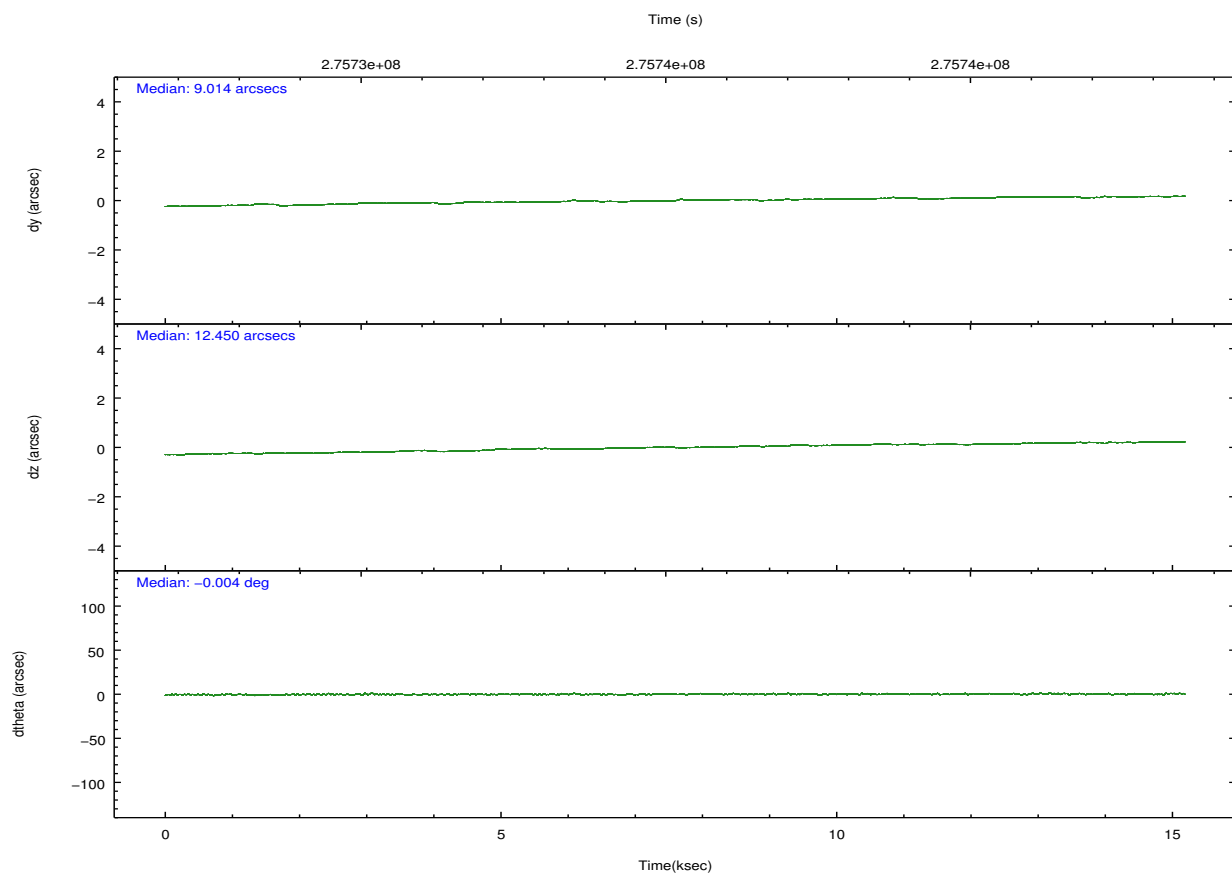
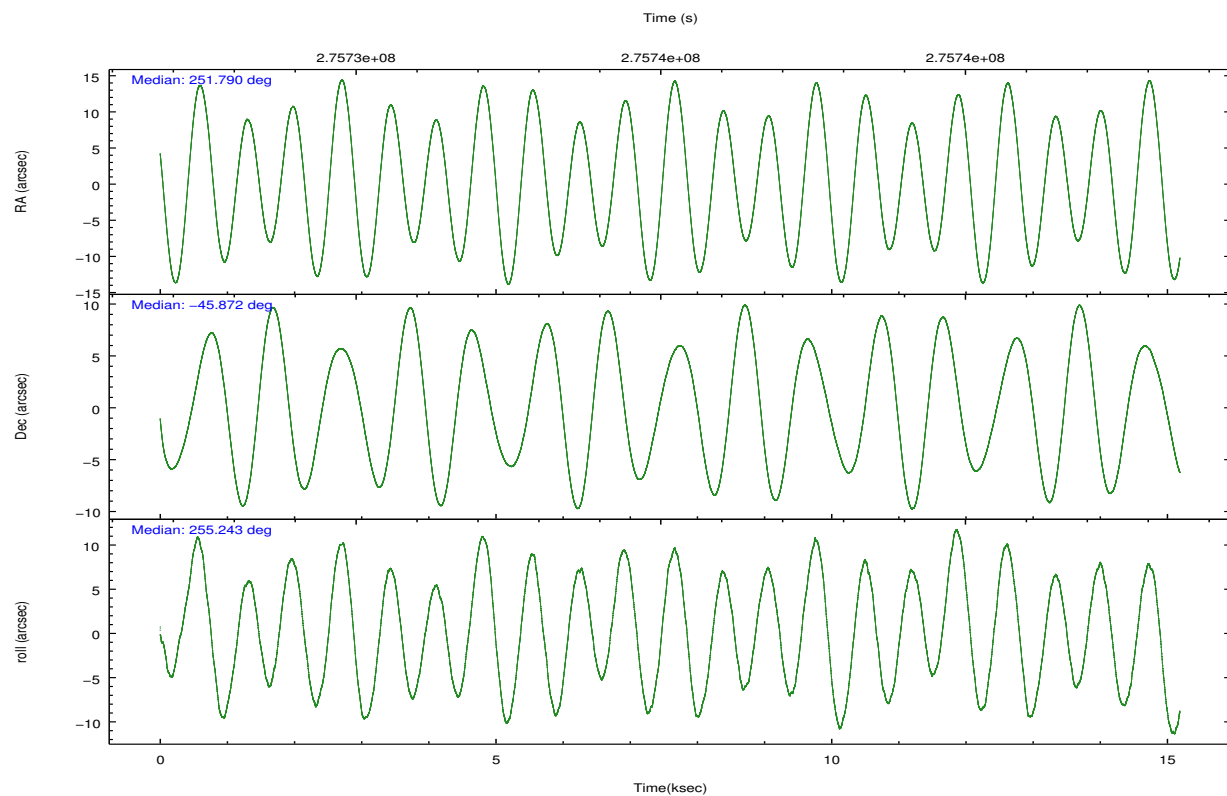
	ccd 2	ccd 3	ccd 5	ccd 6	ccd 7	ccd 8		ccd 2	ccd 3	ccd 5	ccd 6	ccd 7	ccd 8
level 1 events	33926	48045	141827	34804	131688	68710	grade 0 events	4094	8338	27586	3480	14087	12011
rejected events	5874	6614	16211	6903	17952	9928		12%	17%	19%	9%	10%	17%
rejected %	17%	13%	11%	19%	13%	14%	grade 1 events	102	150	178	80	261	226
								0%	0%	0%	0%	0%	0%
							grade 2 events	12659	19875	36951	12013	30168	20547
								37%	41%	26%	34%	22%	29%
							grade 3 events	3135	3764	2732	3347	9271	6465
								9%	7%	1%	9%	7%	9%
							grade 4 events	3210	3349	2669	3202	9237	6183
								9%	6%	1%	9%	7%	8%
							grade 5 events	5263	5799	13299	6190	15854	8419
								15%	12%	9%	17%	12%	12%
							grade 6 events	5463	6770	58412	6492	52810	14859
								16%	14%	41%	18%	40%	21%
							grade 7 events	0	0	0	0	0	0
								0%	0%	0%	0%	0%	0%

## 2.2 Compared Parameters

Parameter	Planned	Actual	Parameter	Planned	Actual
Instrument	ACIS	ACIS	Obspar format version number	7	7
Detector	ACIS-235678	ACIS-235678	Obspar file type	PREDICTED	ACTUAL
Grating	NONE	NONE	Obspar update status	NONE	UPDATED
Data mode	CC33_FAINT	CC33_FAINT	Number of optional ACIS chips dropped	0	0
Observation mode	POINTING	POINTING	On-chip summing requested	N	N
[deg] Pointing RA	251.778933	251.7896781897058	Subarray requested	NONE	NONE
[deg] Pointing Dec	-45.845962	-45.87215939739282	Alternating exposures requested	N	N
[deg] Pointing Roll	255.089743	255.2540805467476	[s] Primary exposure time	0.000000	0
[mm] SIM focus pos	-0.684267	-0.6828225247311905			
[mm] SIM defocus	0	0.001444936568705701			
[mm] SIM translation stage pos	-190.132523	-190.1425803651734			
[mm] SIM translation stage offset	0	0.01005778216563158			
[s] Observation start time (MET)	275727737.184000	275727045.70206			
Observation start date	2006-09-27T07:01:12	2006-09-27T06:50:45			
[s] Observation end time (MET)	275742737.184000	275742963.95281			
Observation end date	2006-09-27T11:11:12	2006-09-27T11:16:03			
Read mode	CONTINUOUS	CONTINUOUS			

## 2.3 Aspect



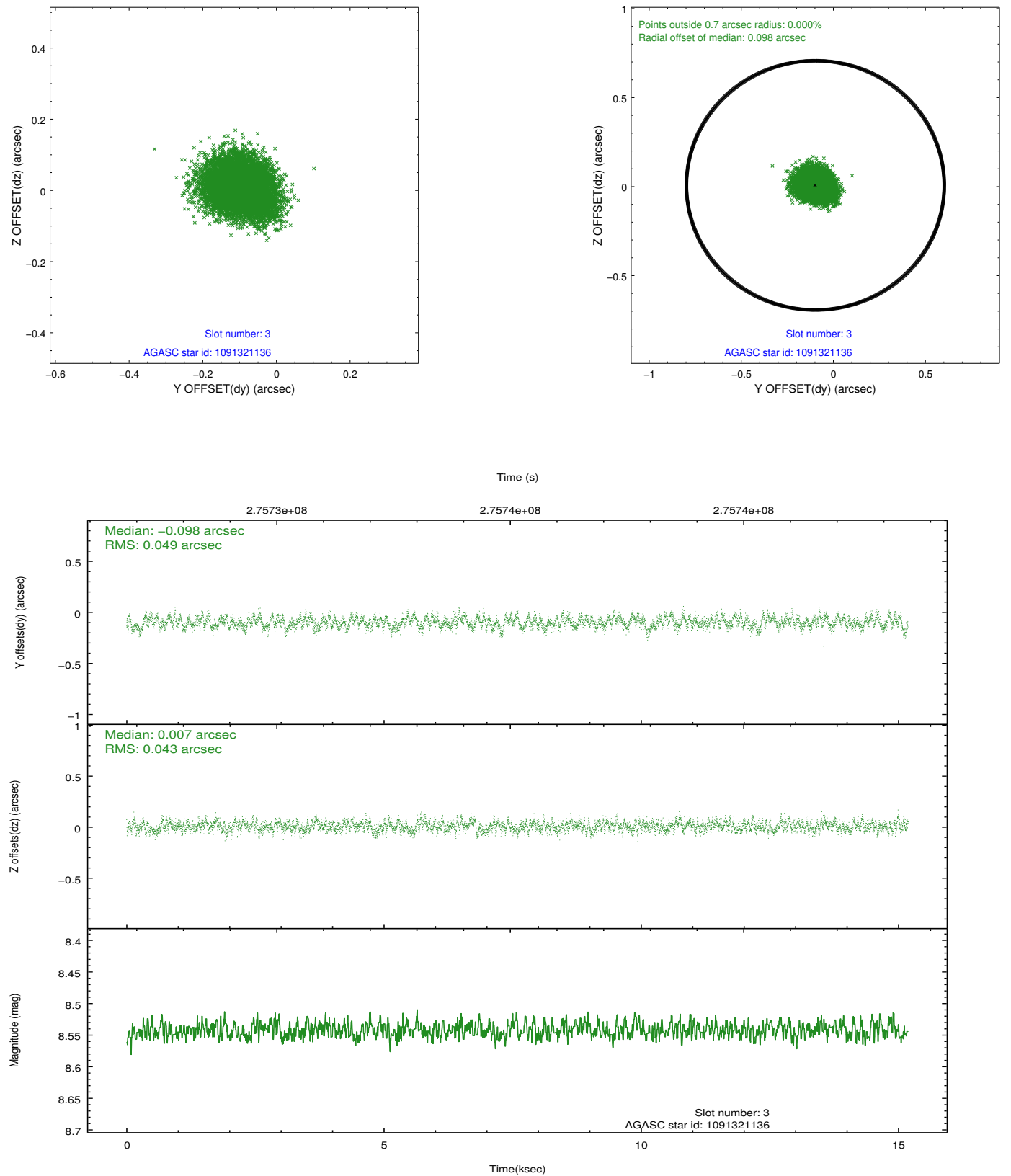


### Slot Statistics

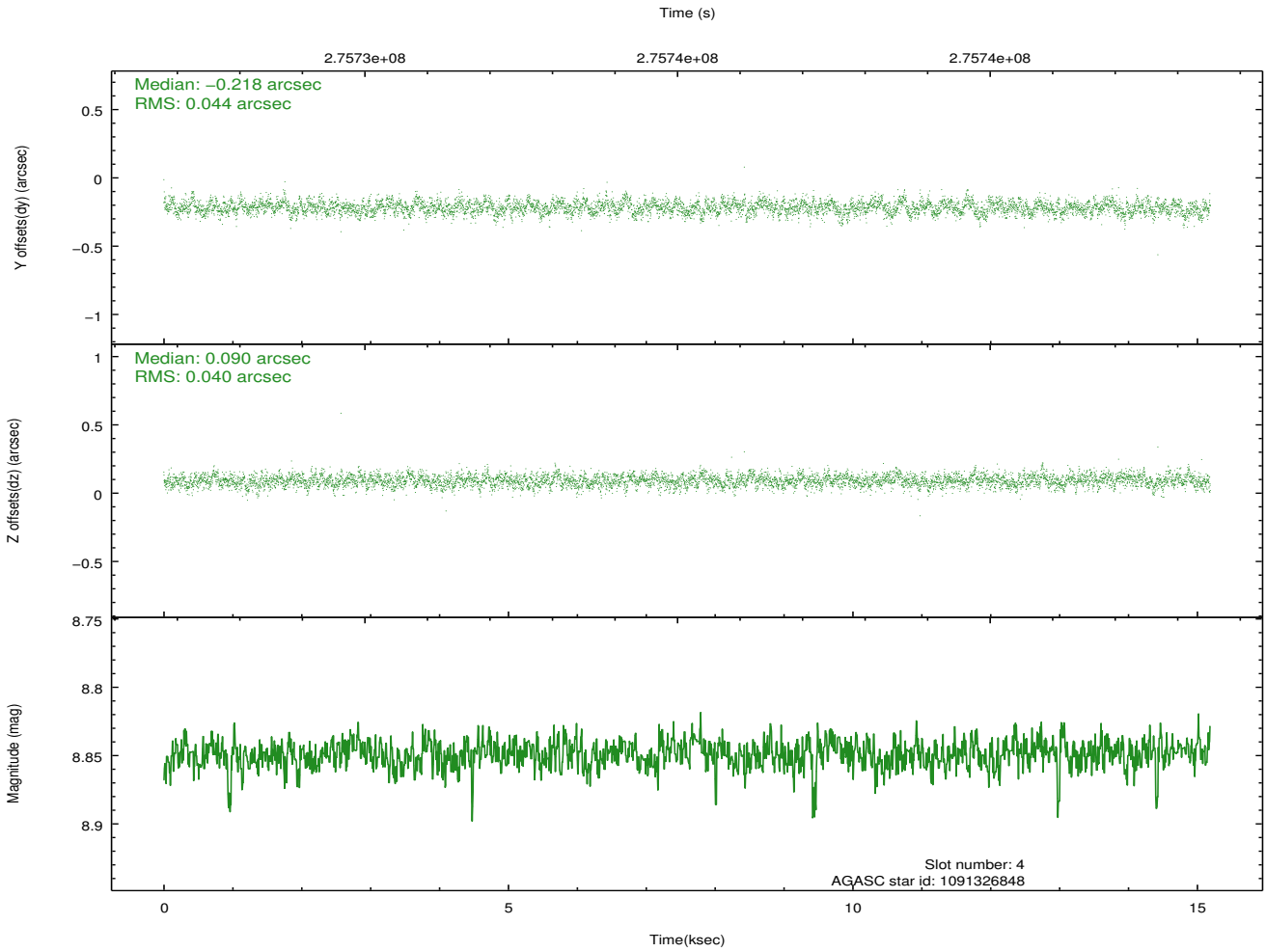
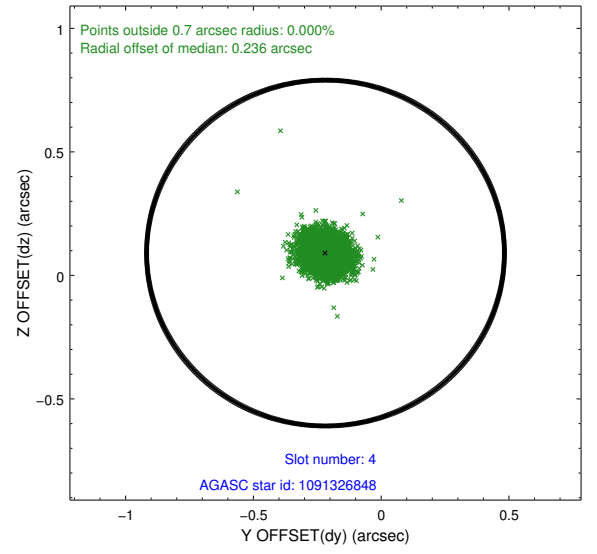
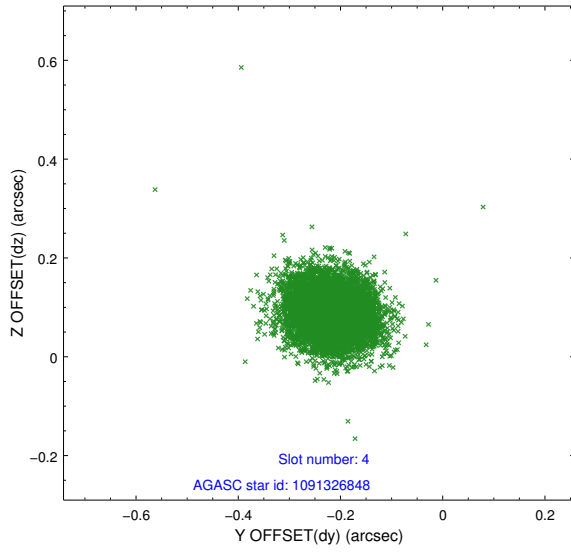
slot	status	id	mag	n_pts	med_dy	med_dz	dr1	dr2	ra	dec	mean_y	mean_z
0	FID	ACIS-S-1	7.19	3705	0.090	-0.072	0.011	0.018	0.000000	0.000000	934.26	-1729.42
1	FID	ACIS-S-5	7.24	3705	-0.139	0.058	0.007	0.012	0.000000	0.000000	-1814.74	168.04
2	FID	ACIS-S-6	7.35	3705	0.028	0.025	0.012	0.020	0.000000	0.000000	399.51	812.24
3	GUIDE	1091321136	8.54	7403	-0.098	0.007	0.070	0.111	252.629031	-45.865288	-470.38	2080.06
4	GUIDE	1091326848	8.85	7393	-0.218	0.090	0.062	0.102	252.143808	-45.528706	-1338.52	596.15
5	GUIDE	1091339224	9.29	7375	0.188	0.046	0.102	0.168	252.148017	-46.336106	1471.19	1341.60
6	GUIDE	1091341680	8.43	7409	0.125	-0.114	0.070	0.112	251.240217	-46.114317	1284.68	-1048.99
7	GUIDE	1091315904	6.92	7409	0.001	-0.032	0.068	0.110	252.023077	-45.944918	188.23	682.47

## 2.4 Star Slots

### 2.4.1 Slot 3

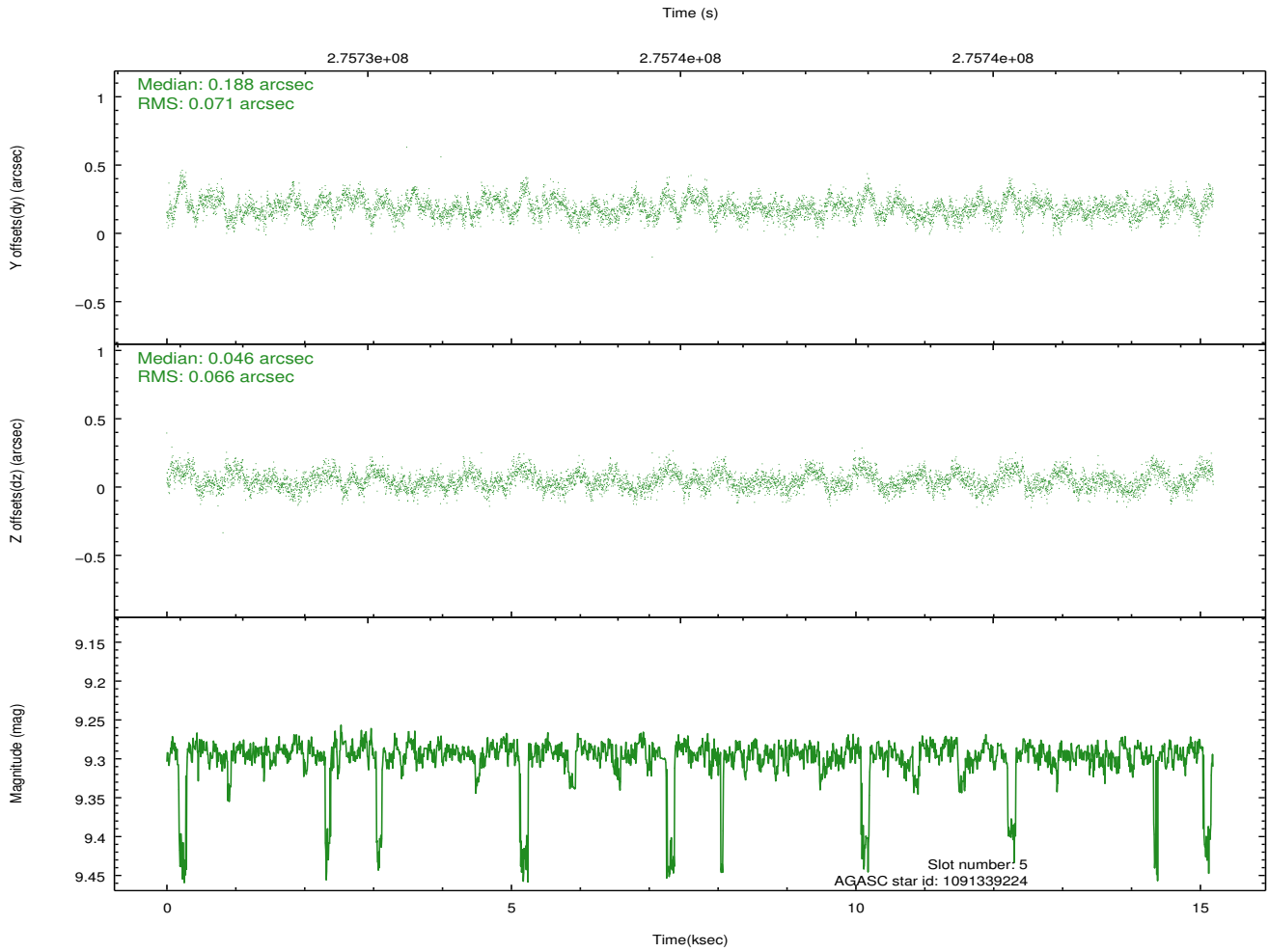
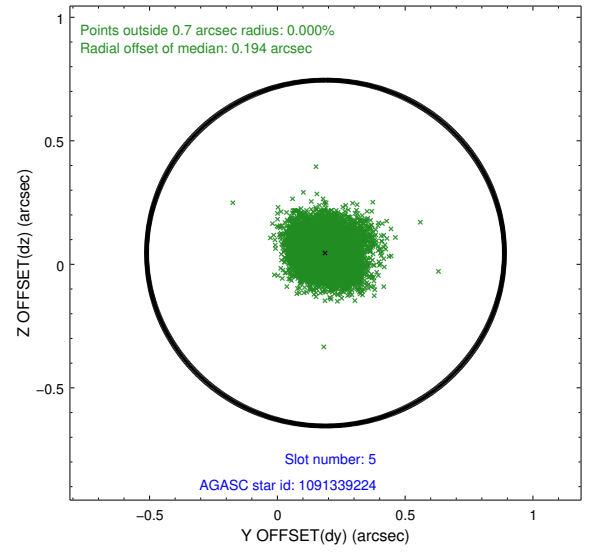
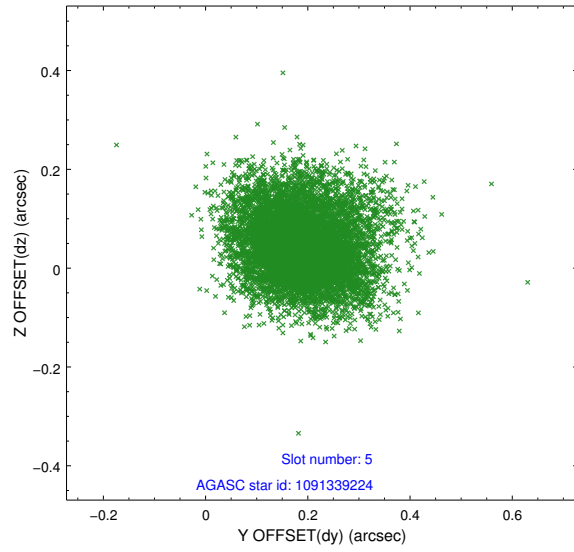


## 2.4.2 Slot 4

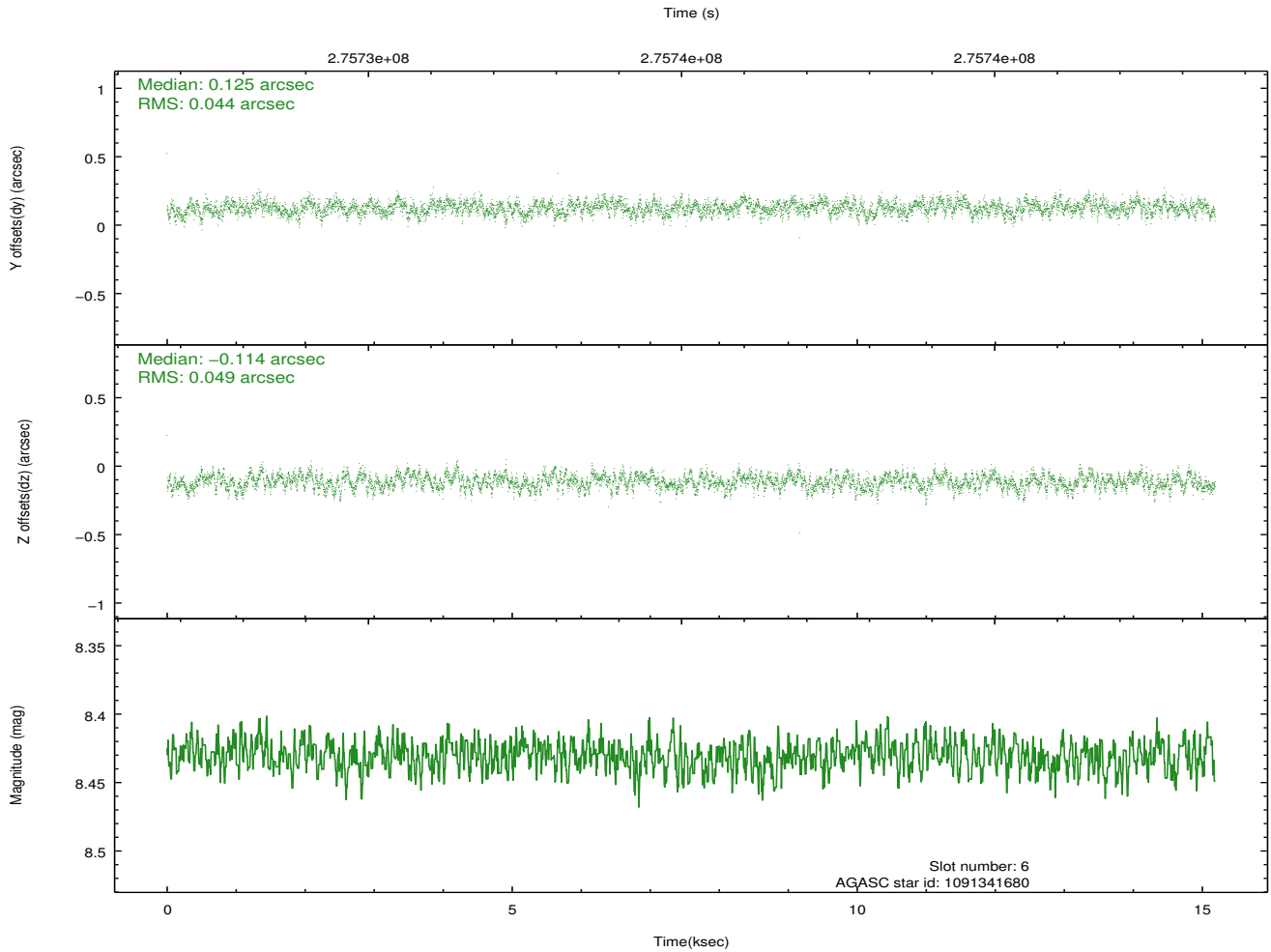
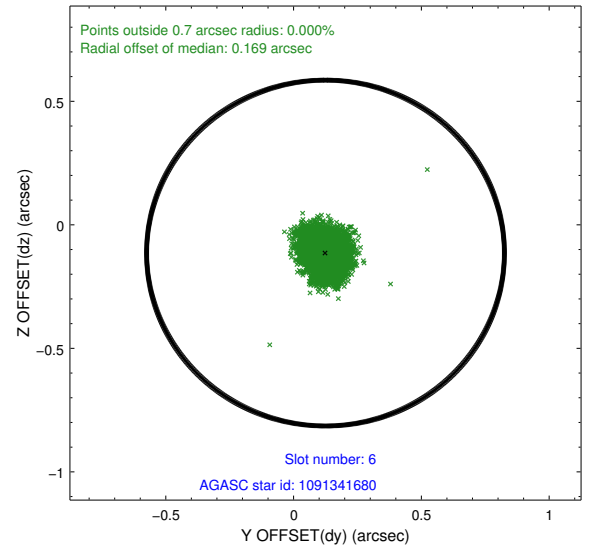
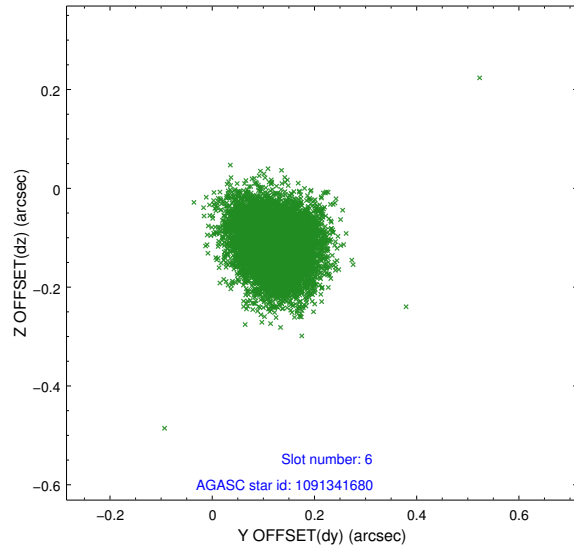




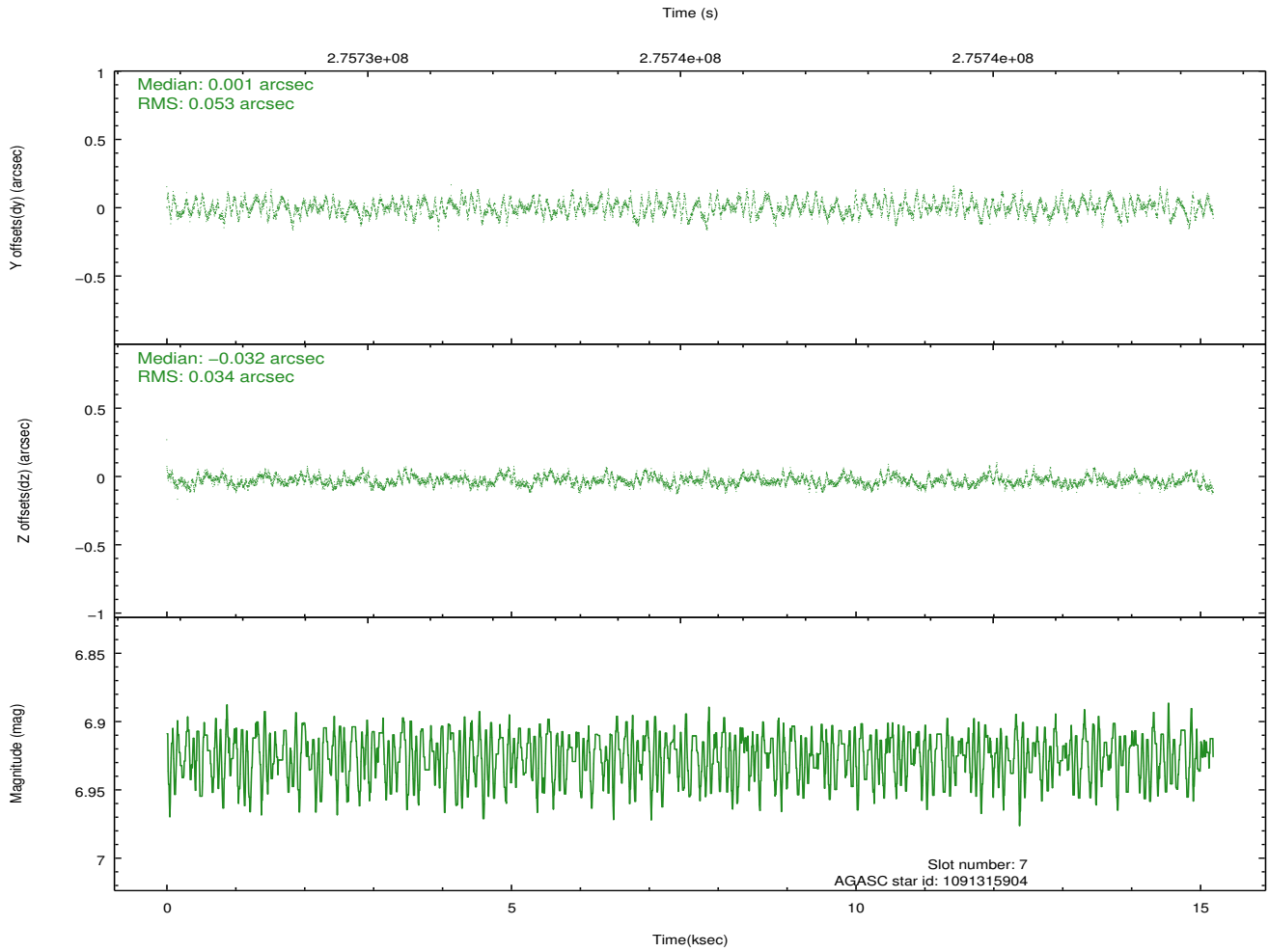
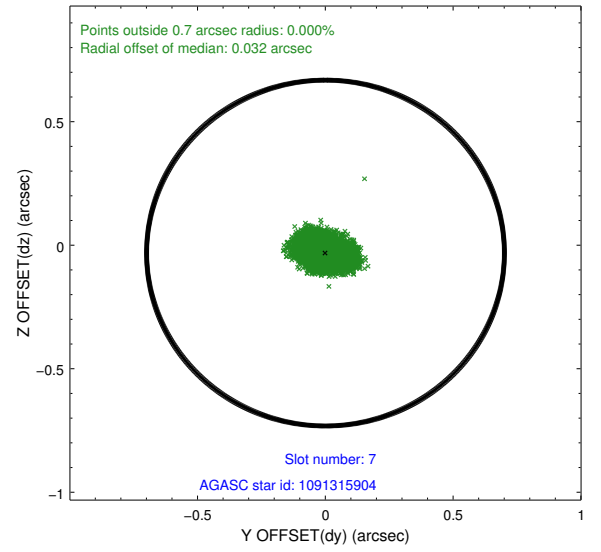
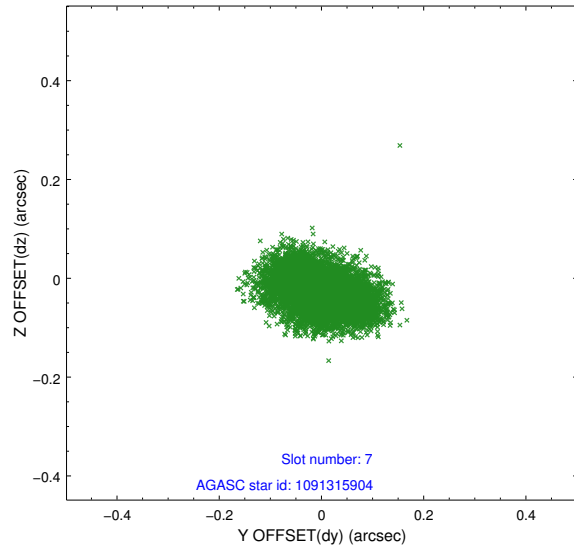
### 2.4.3 Slot 5



## 2.4.4 Slot 6

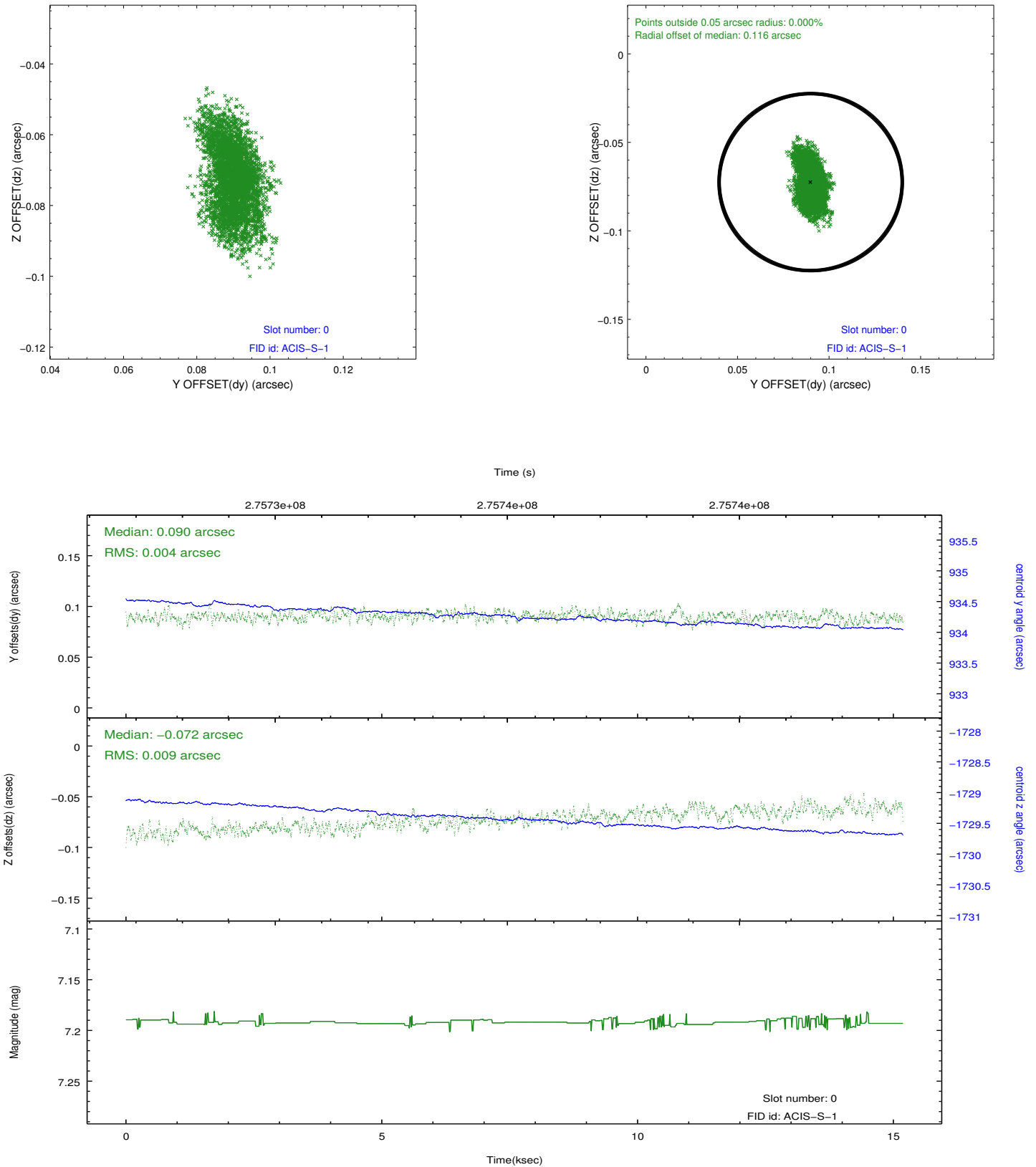


## 2.4.5 Slot 7

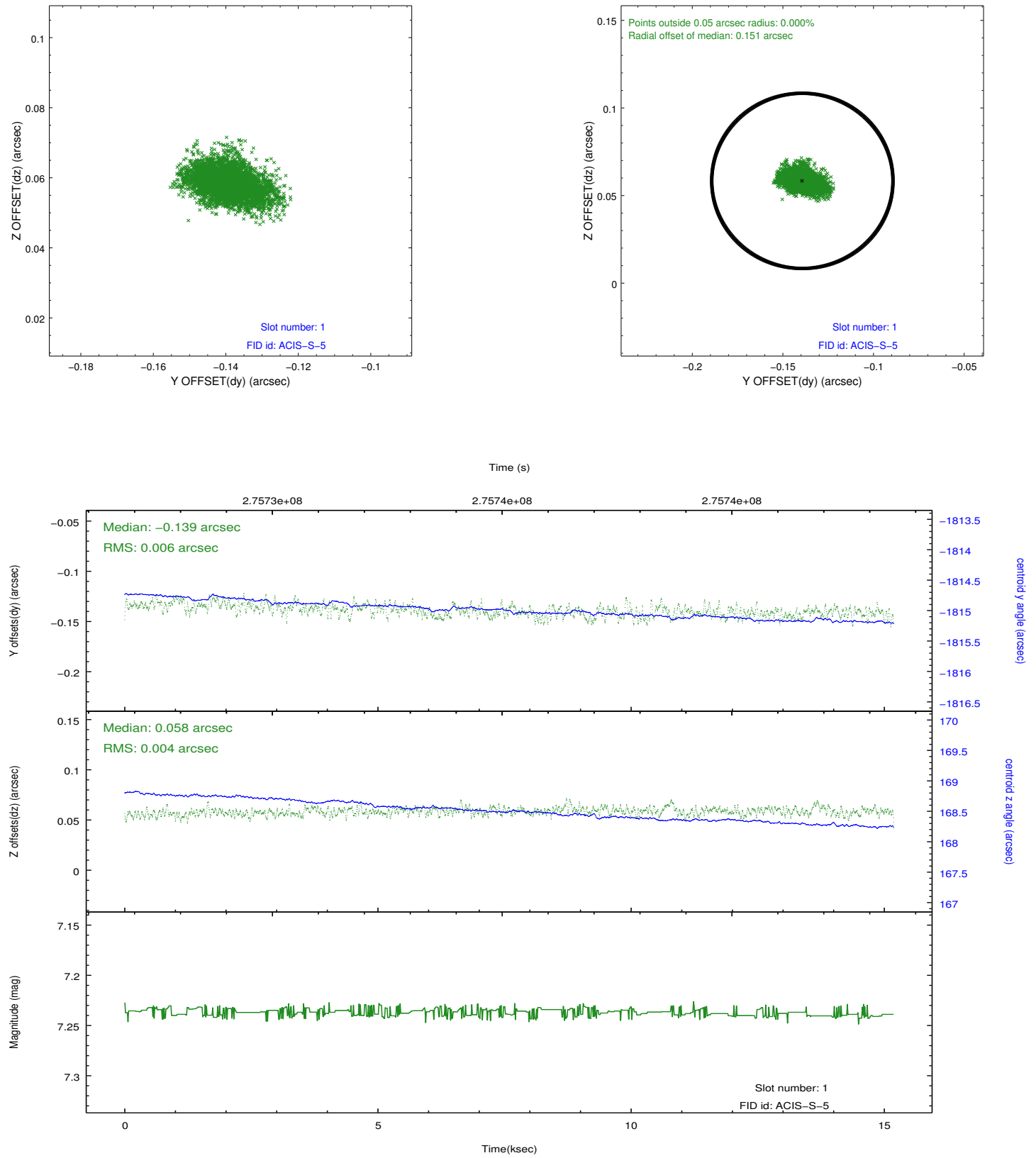


## 2.5 FID Slots

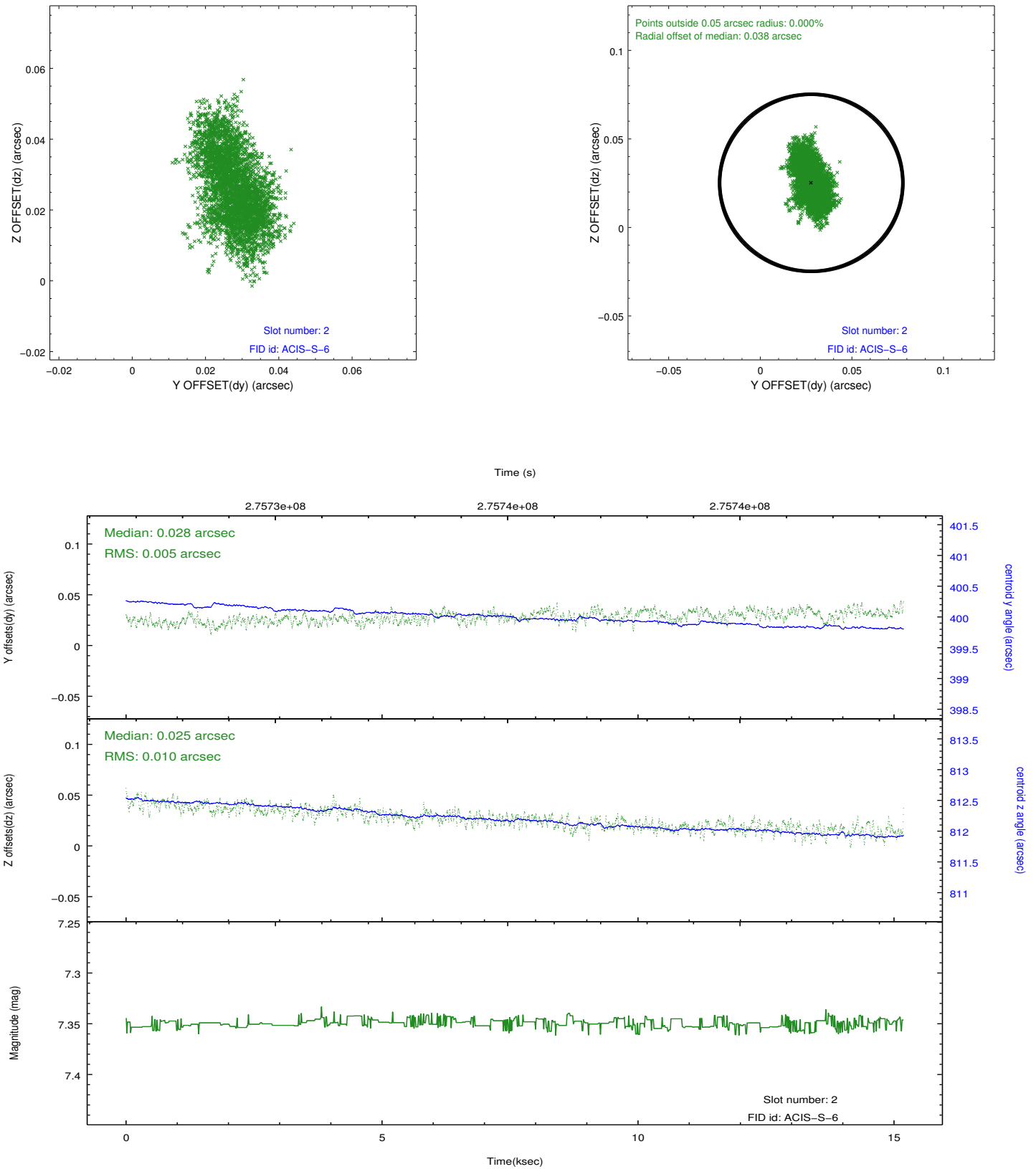
### 2.5.1 Slot 0



## 2.5.2 Slot 1



### 2.5.3 Slot 2



## A Summary

### A.1 Status

V&V Scientist	Joy Nichols
V&V Date (YYYY-MM-DD)	2012.04.11
V&V Edition	1
V&V Disposition and Status	OK
V&V Charge Time	15.1815

### A.2 Comments