

# V&V Reference Report

## L2 ASCDS Version : 8.4.3

Observation 6374 - L2 Version 4  
Chandra X-Ray Center

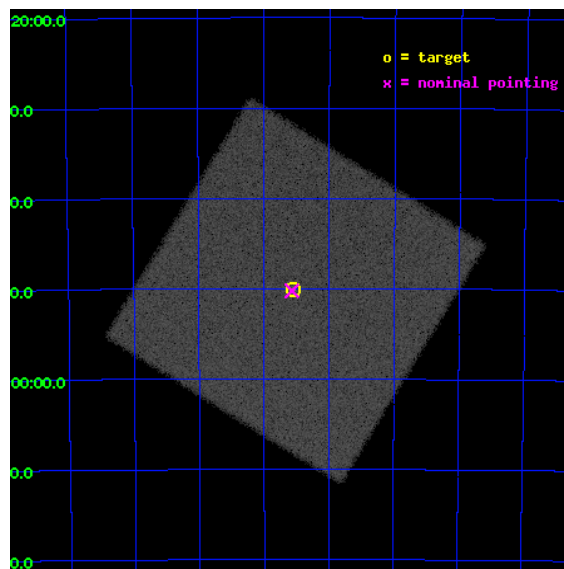
L2 Processing Date : Aug 11 2012

## Contents

<b>1</b>	<b>Front</b>	<b>2</b>
<b>2</b>	<b>OBI</b>	<b>3</b>
2.1	OBI . . . . .	3
2.1.1	Images . . . . .	3
2.1.2	Parameters . . . . .	4
2.1.3	Events . . . . .	4
2.2	Compared Parameters . . . . .	5
2.3	Aspect . . . . .	6
2.4	Star Slots . . . . .	9
2.4.1	Slot 3 . . . . .	9
2.4.2	Slot 4 . . . . .	10
2.4.3	Slot 5 . . . . .	11
2.4.4	Slot 6 . . . . .	12
2.4.5	Slot 7 . . . . .	13
2.5	FID Slots . . . . .	14
2.5.1	Slot 0 . . . . .	14
2.5.2	Slot 1 . . . . .	15
2.5.3	Slot 2 . . . . .	16
<b>A</b>	<b>Summary</b>	<b>17</b>
A.1	Status . . . . .	17
A.2	Comments . . . . .	17

# 1 Front

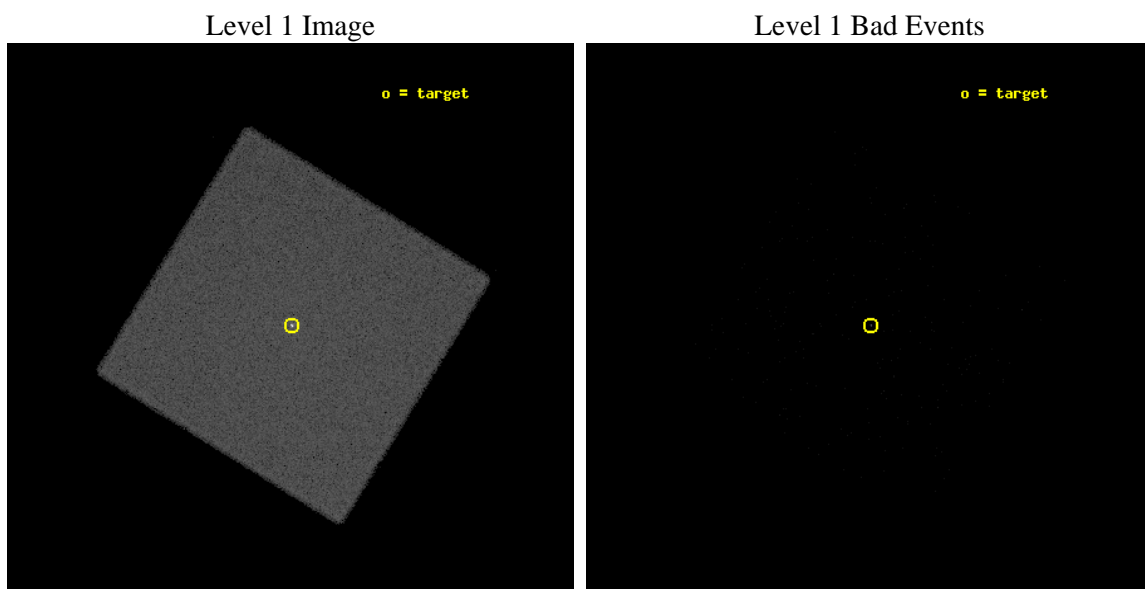
seq_num	200371	Sequence number
obs_id	6374	Observation id
title	HRC Imaging of the 'Fainted' Primary of the Alpha Centauri System	&#160
observer	Dr. Thomas Ayres	Principal investigator
object	Alpha Centauri	Source name
ra_targ	219.885833	Observer's specified target RA [deg]
dec_targ	-60.834889	Observer's specified target Dec [deg]
ra_nom	219.89278403229	Nominal RA [deg]
dec_nom	-60.837411258035	Nominal Dec [deg]
roll_nom	346.66079675923	Nominal Roll [deg]
revision	4	Processing version of data
ontime	5157.0314905643	[s]
liveltime	5111.755854041	Ontime multiplied by DTCOR
l2events	259632	Number of level 2 events



## 2 OBI

### 2.1 OBI

#### 2.1.1 Images



### 2.1.2 Parameters

obi_num	0	Obi number	sched_exp_time	5000.000000	[s] Scheduled observation exposure time
ascdsver	8.4.5	Processing system revision	ontime	5157.0314905643	[s]
caldbver	4.5.1.1	&#160	l1events	479797	Number of level 1 events
date	2012-08-11T07:45:40	Date and time of file creation			
revision	4	Processing version of data			

### 2.1.3 Events

#### Level 1 Events

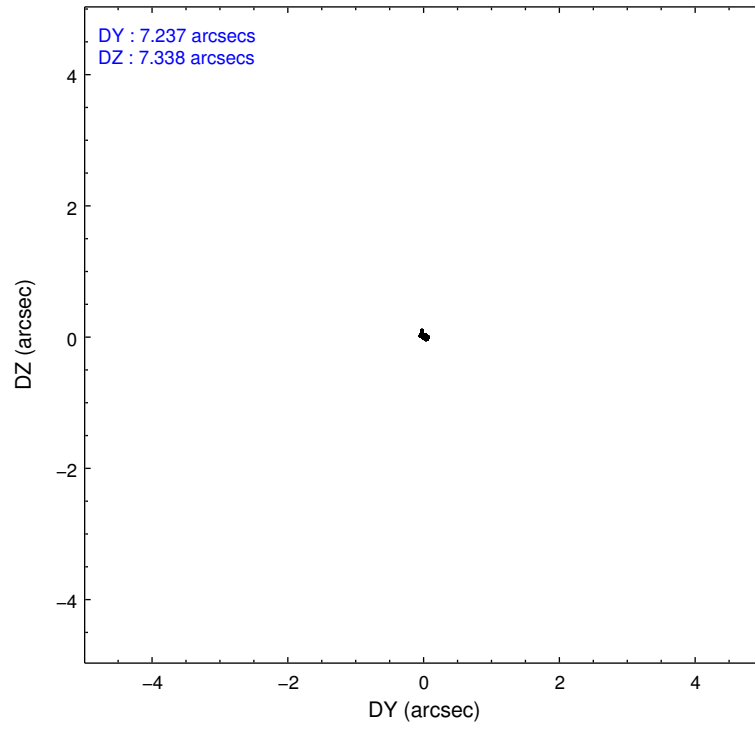
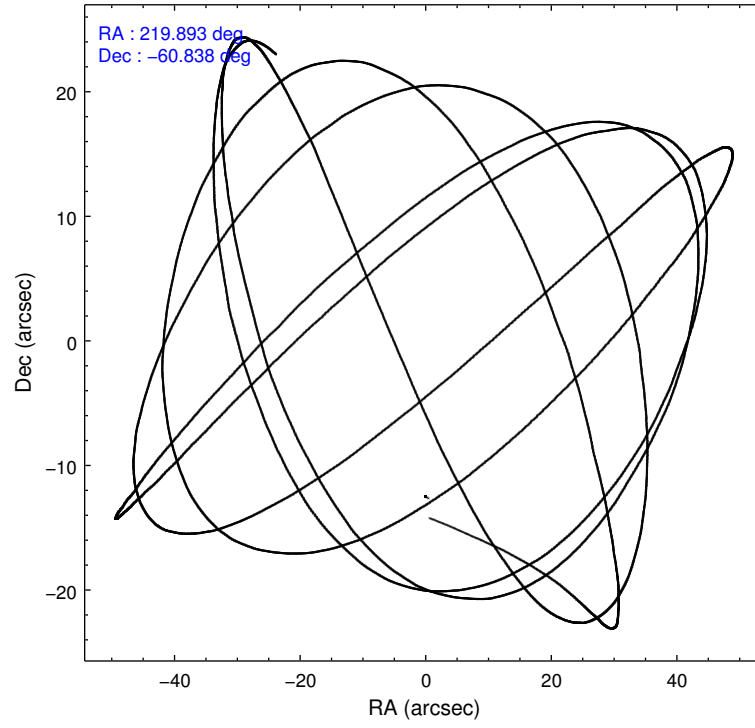
	<b>segment 0</b>
level 1 events	479797
rejected events	99873
rejected %	20%

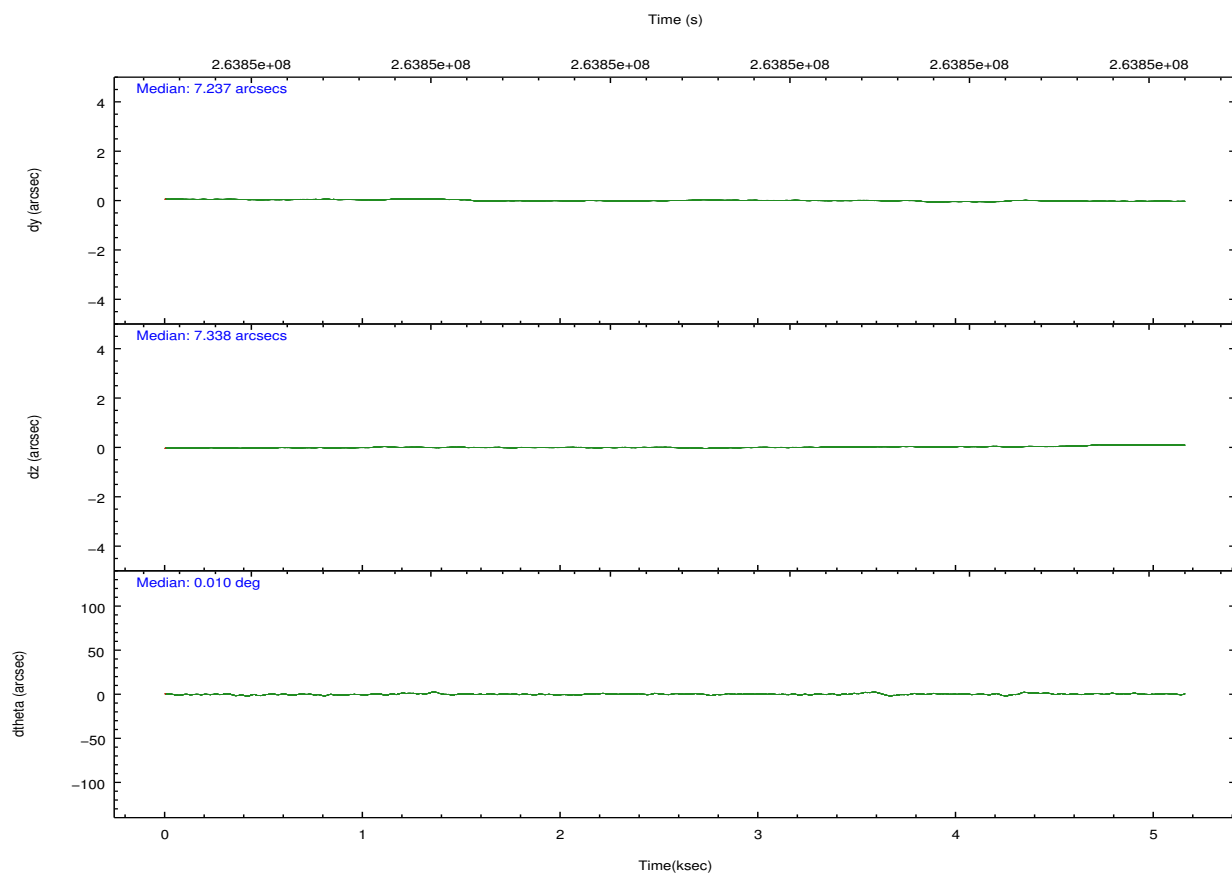
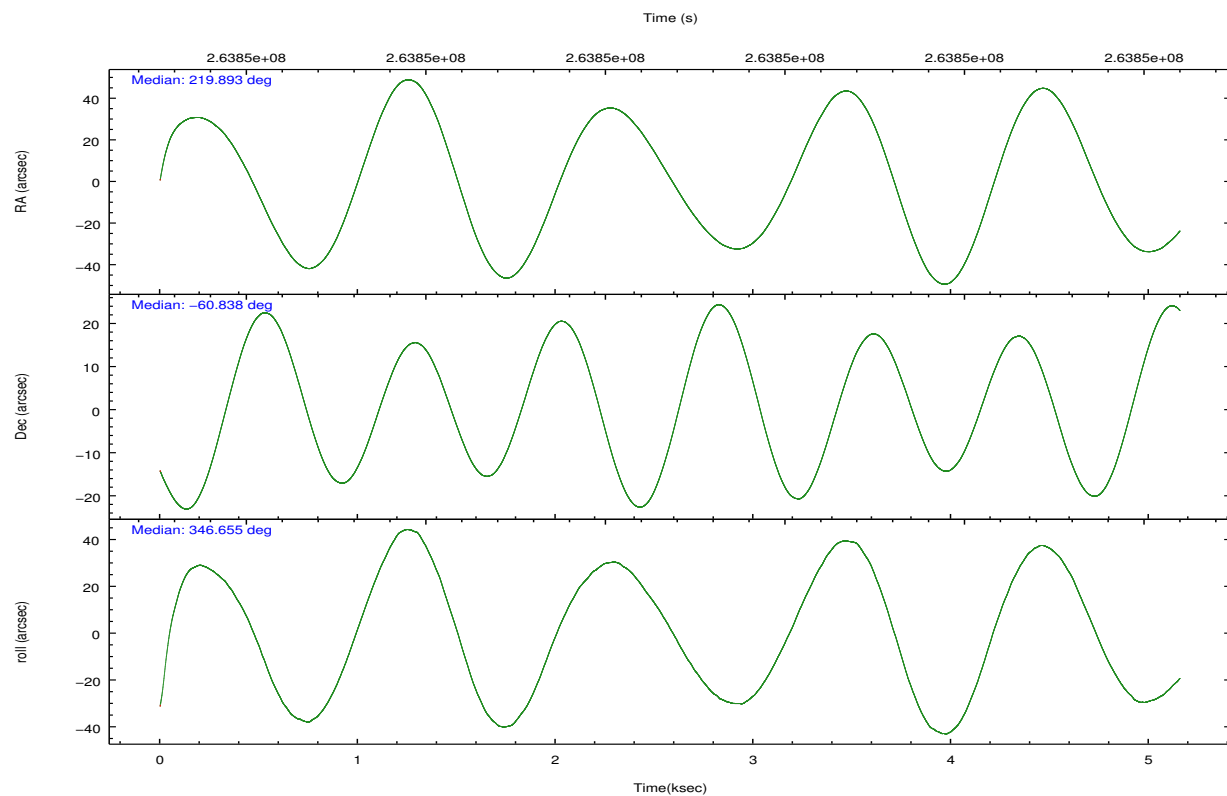


## 2.2 Compared Parameters

Parameter	Planned	Actual	Parameter	Planned	Actual
Instrument	HRC	HRC	Obspar format version number	7	7
Detector	HRC-I	HRC-I	Obspar file type	PREDICTED	ACTUAL
Grating	NONE	NONE	Obspar update status	NONE	UPDATED
Data mode	OBSERVING	OBSERVING			
Observation mode	POINTING	POINTING			
[deg] Pointing RA	219.839833	219.8927840322904			
[deg] Pointing Dec	-60.845703	-60.83741125803544			
[deg] Pointing Roll	346.710101	346.6607967592258			
[mm] SIM focus pos	-1.040293	-1.038866356238299			
[mm] SIM defocus	0	0.001426264420575141			
[mm] SIM translation stage pos	126.985494	126.9829799899862			
[mm] SIM translation stage offset	0	0.002508901615314585			
[s] Observation start time (MET)	263845937.184000	263844457.94523			
Observation start date	2006-05-12T18:31:12	2006-05-12T18:07:37			
[s] Observation end time (MET)	263850937.184000	263851691.37057			
Observation end date	2006-05-12T19:54:32	2006-05-12T20:08:11			

## 2.3 Aspect



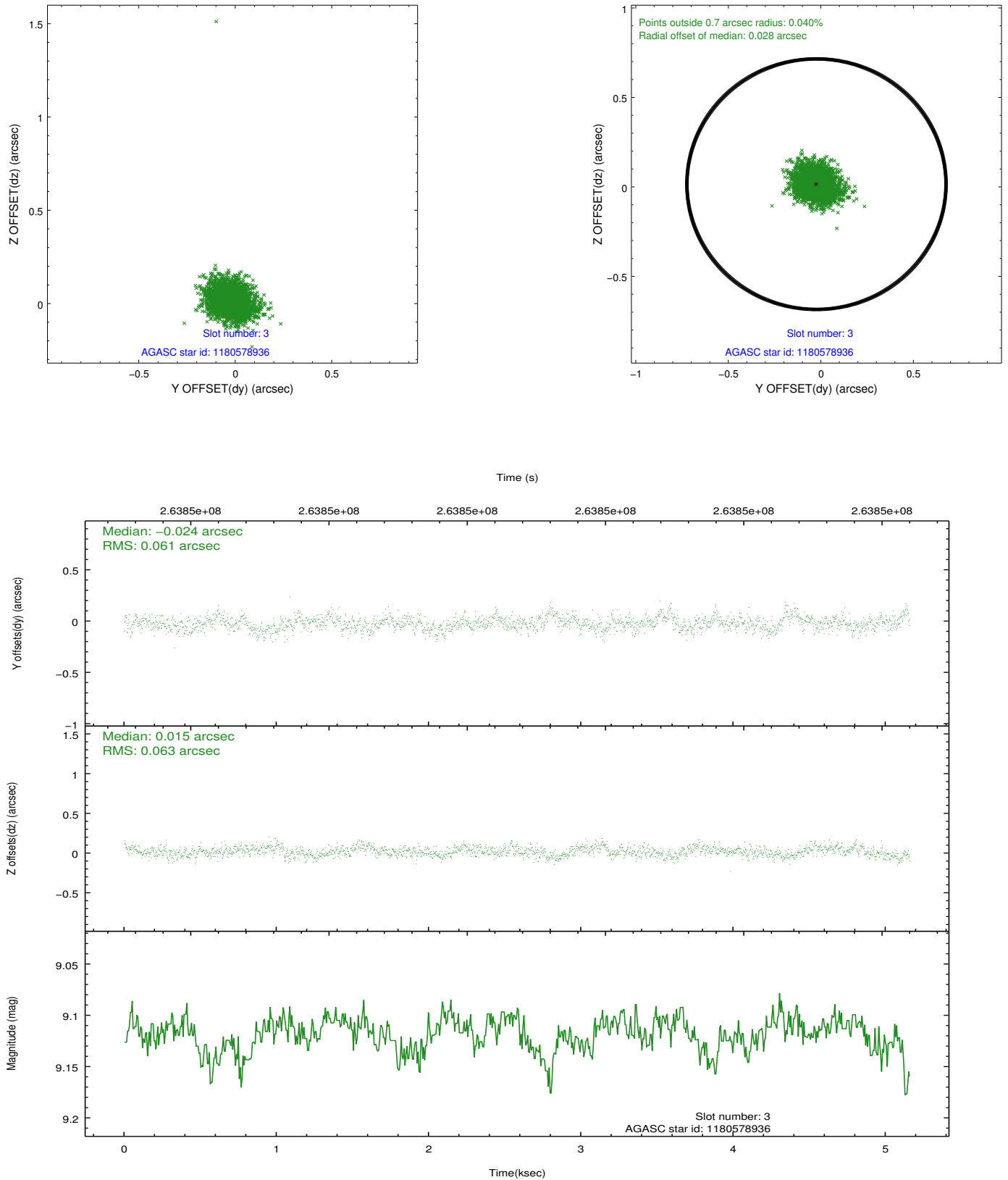


### Slot Statistics

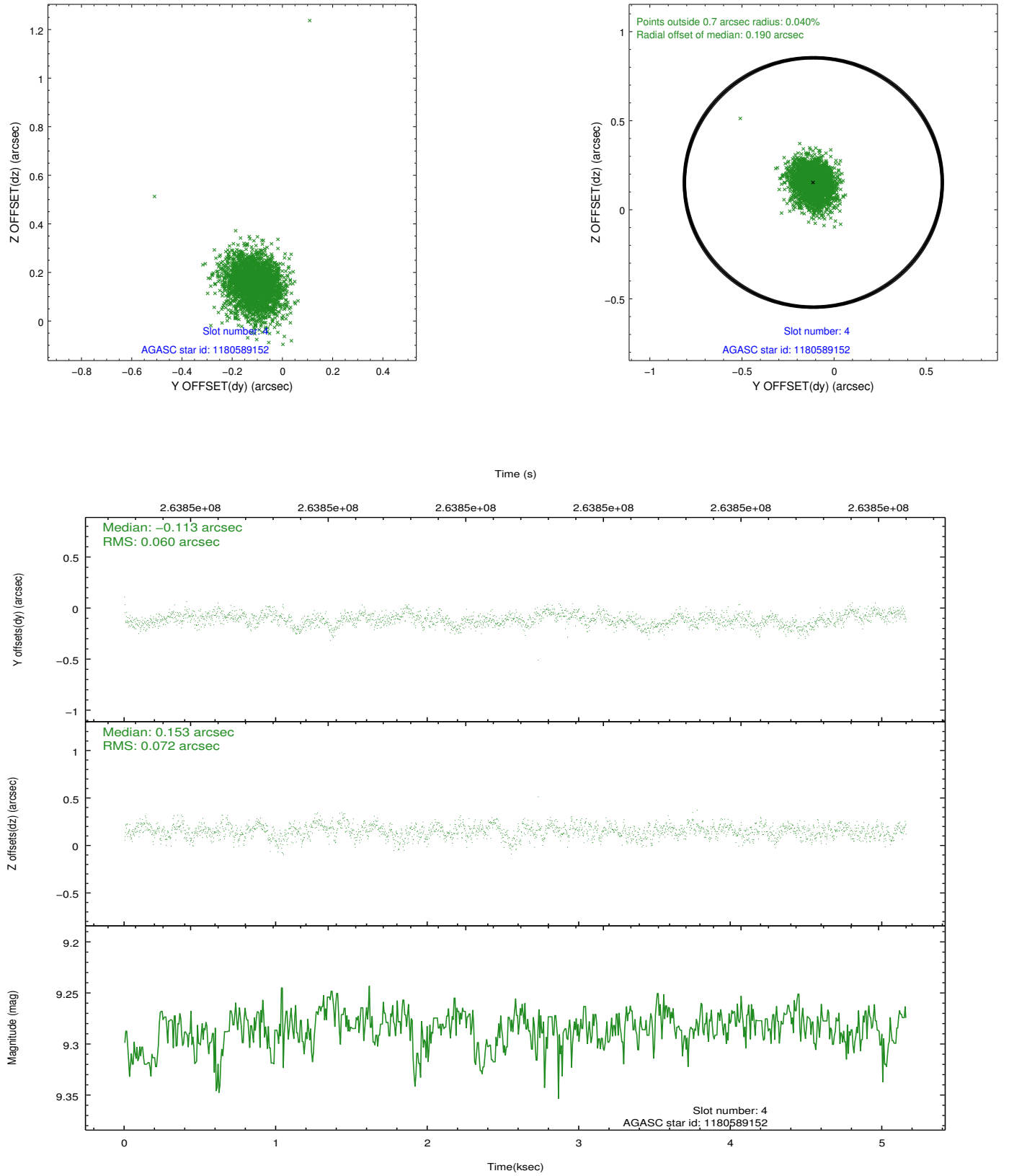
slot	status	id	mag	n_pts	med_dy	med_dz	dr1	dr2	ra	dec	mean_y	mean_z
0	FID	HRC-I-2	7.01	1259	0.079	-0.061	0.007	0.017	0.000000	0.000000	849.85	-1296.85
1	FID	HRC-I-3	7.06	1259	-0.090	0.013	0.007	0.014	0.000000	0.000000	-1190.72	1008.36
2	FID	HRC-I-4	7.00	1259	0.130	-0.039	0.007	0.014	0.000000	0.000000	1279.16	1007.70
3	GUIDE	1180578936	9.12	2516	-0.024	0.015	0.088	0.145	220.919358	-61.155393	2084.59	-668.37
4	GUIDE	1180589152	9.28	2516	-0.113	0.153	0.097	0.158	219.760705	-61.382926	312.85	-1913.24
5	GUIDE	1180589192	8.80	2515	0.200	0.082	0.079	0.128	218.755496	-60.392327	-2248.17	1129.24
6	GUIDE	1180606544	9.52	2511	-0.038	-0.109	0.125	0.205	218.967988	-60.174357	-2073.55	1983.88
7	GUIDE	1180585720	6.84	2516	-0.025	-0.147	0.063	0.097	218.874235	-60.641928	-1825.10	310.95

## 2.4 Star Slots

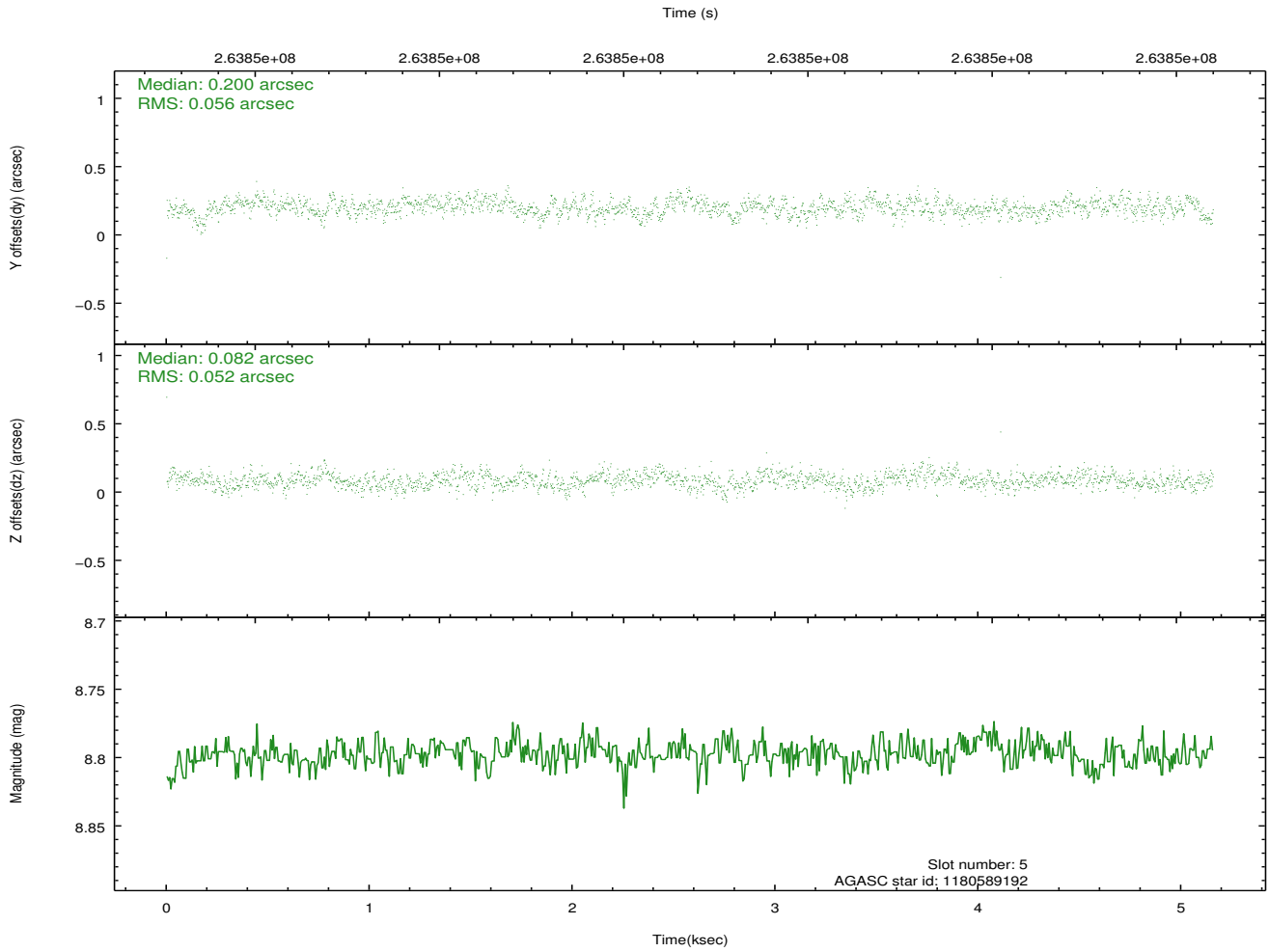
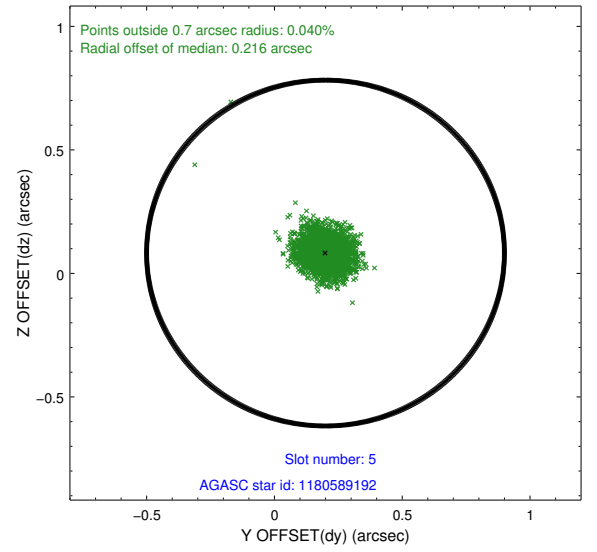
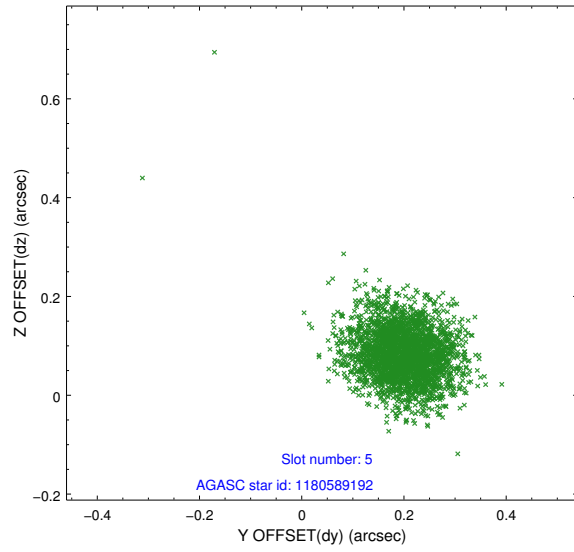
### 2.4.1 Slot 3



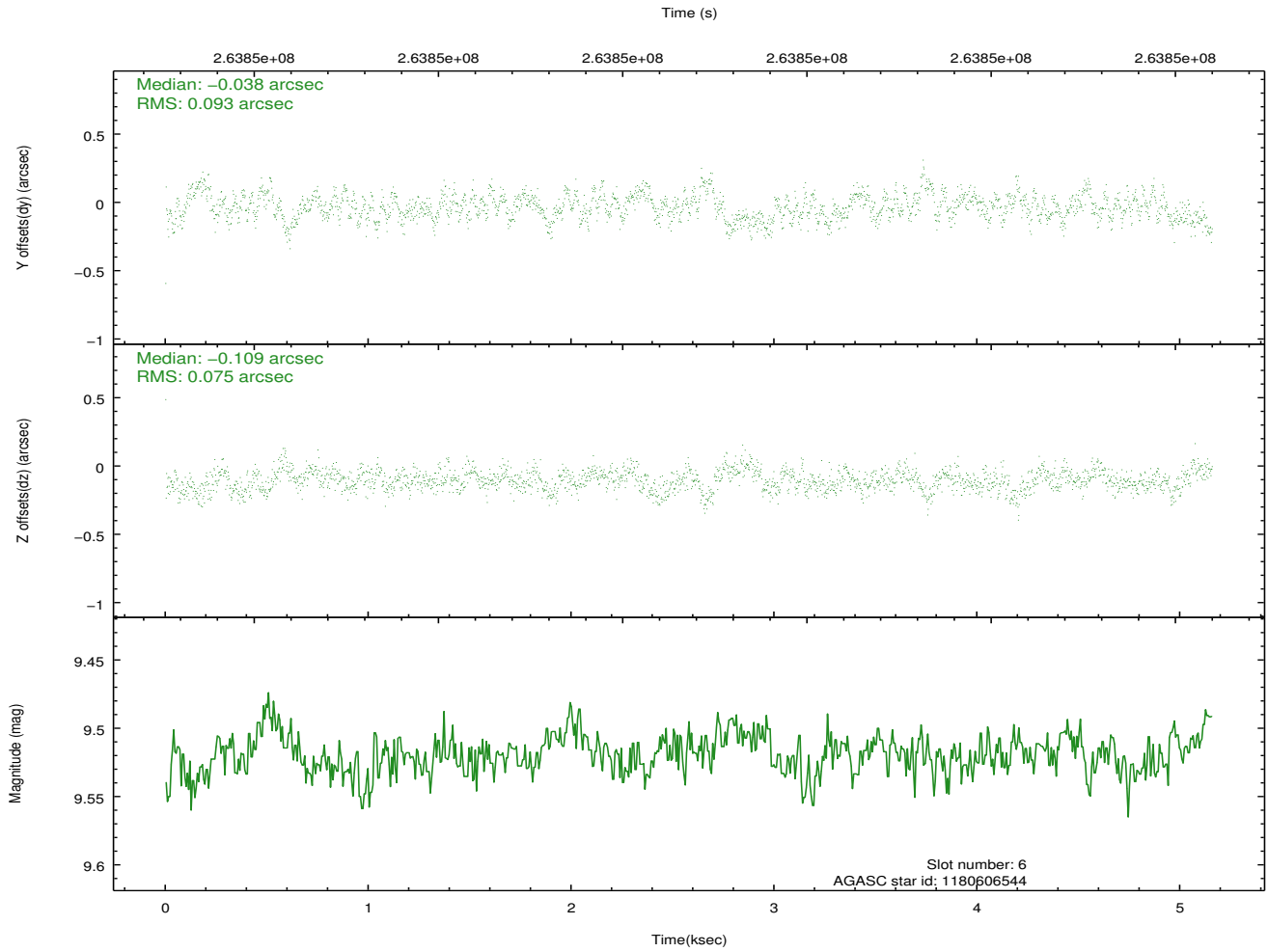
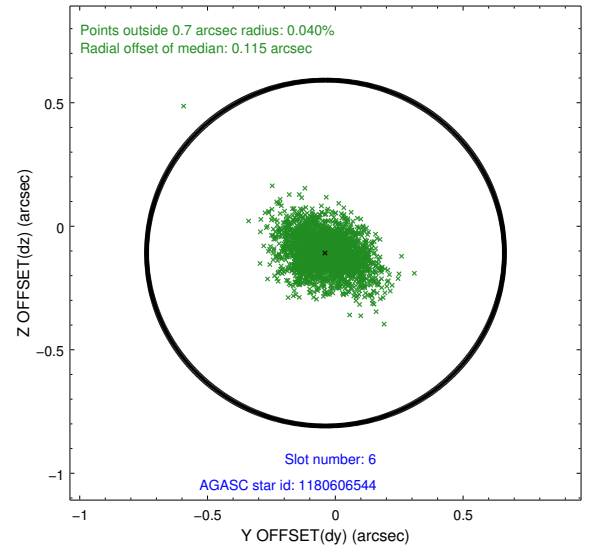
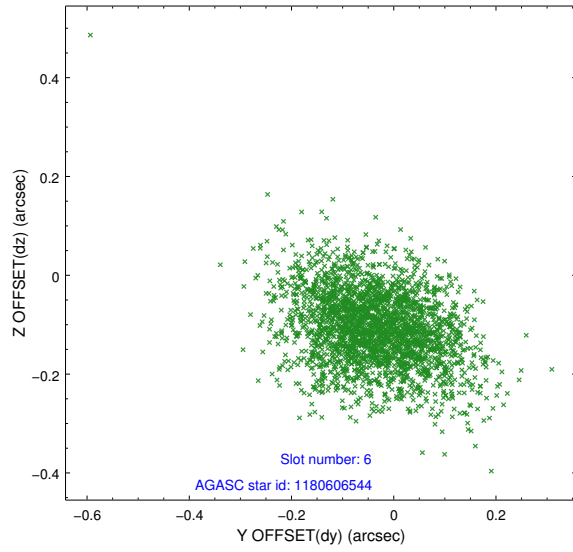
## 2.4.2 Slot 4



### 2.4.3 Slot 5

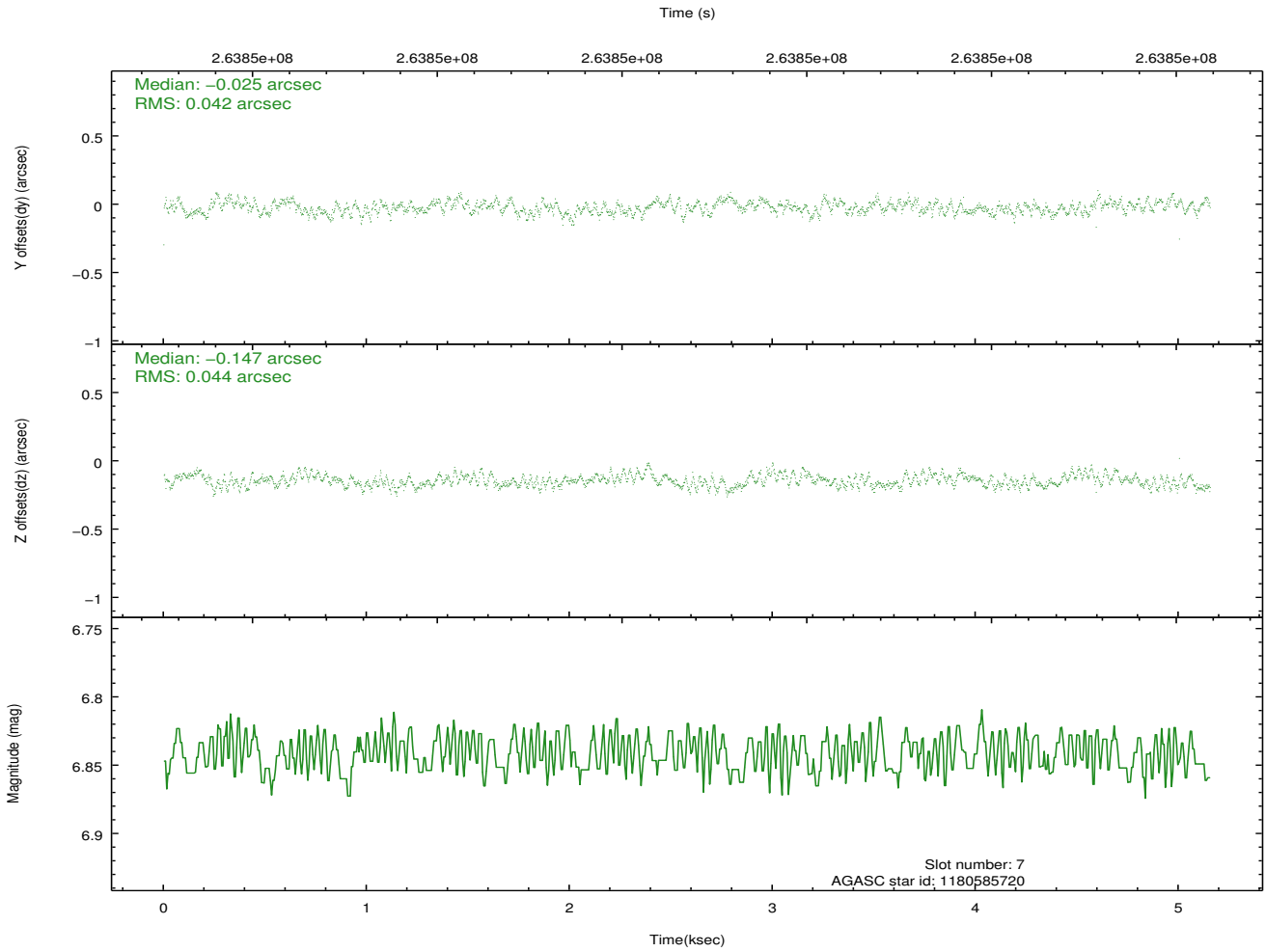
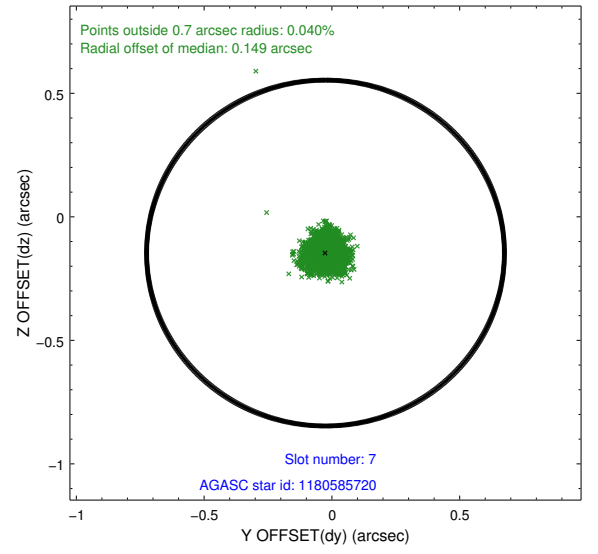
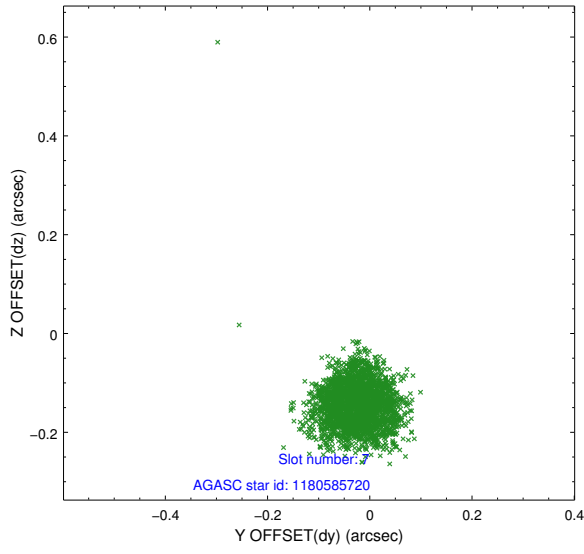


## 2.4.4 Slot 6



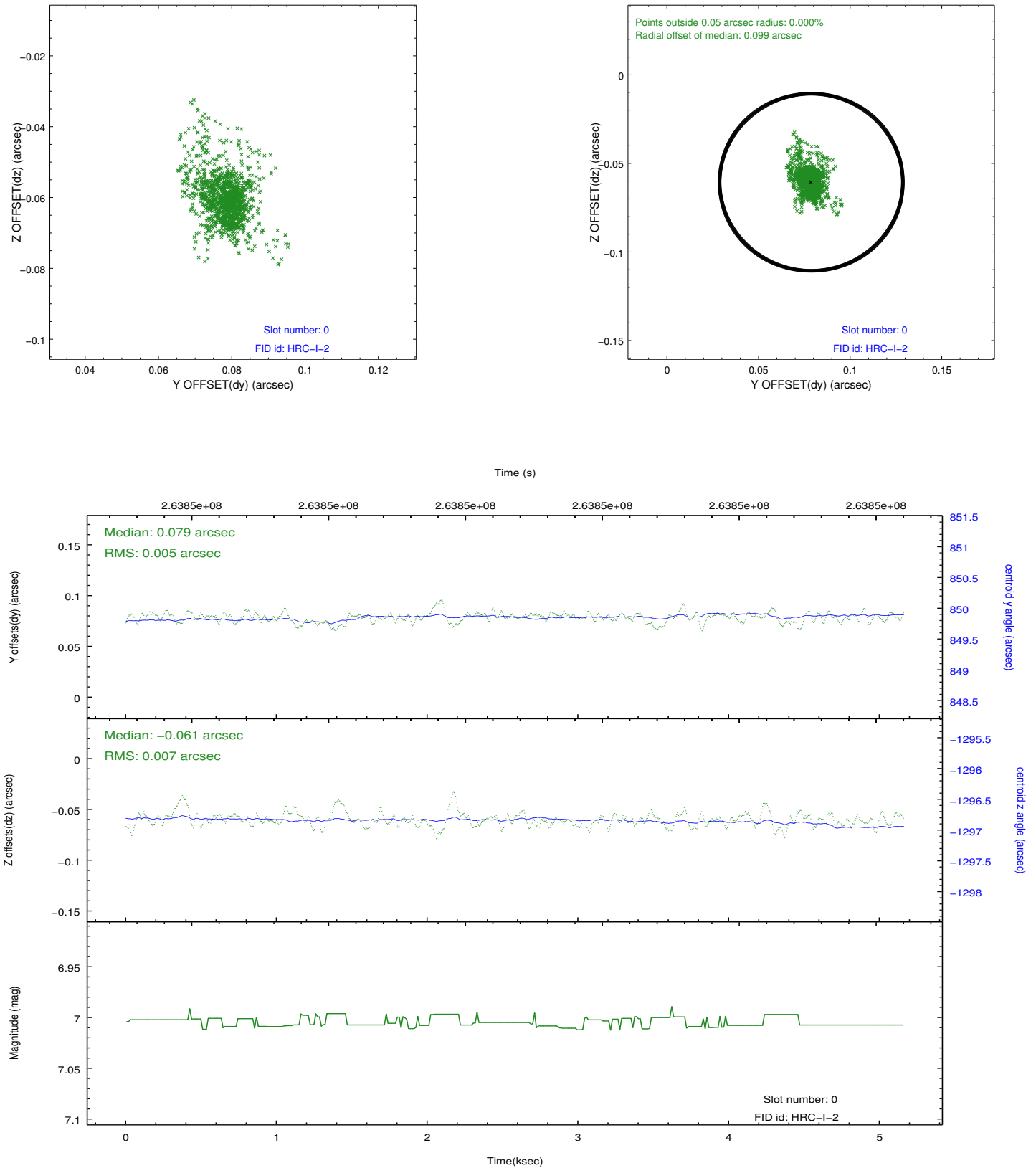


## 2.4.5 Slot 7

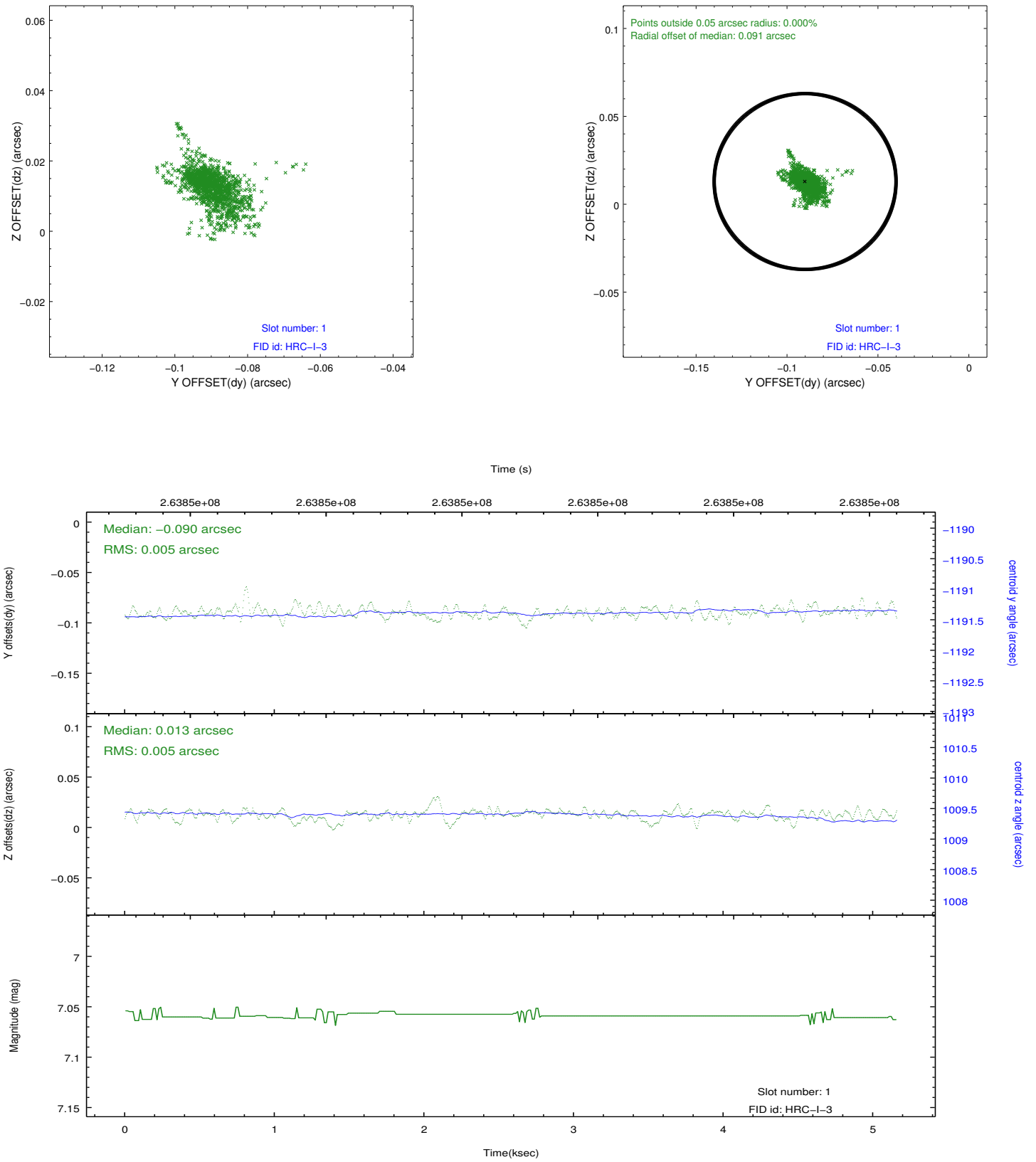


## 2.5 FID Slots

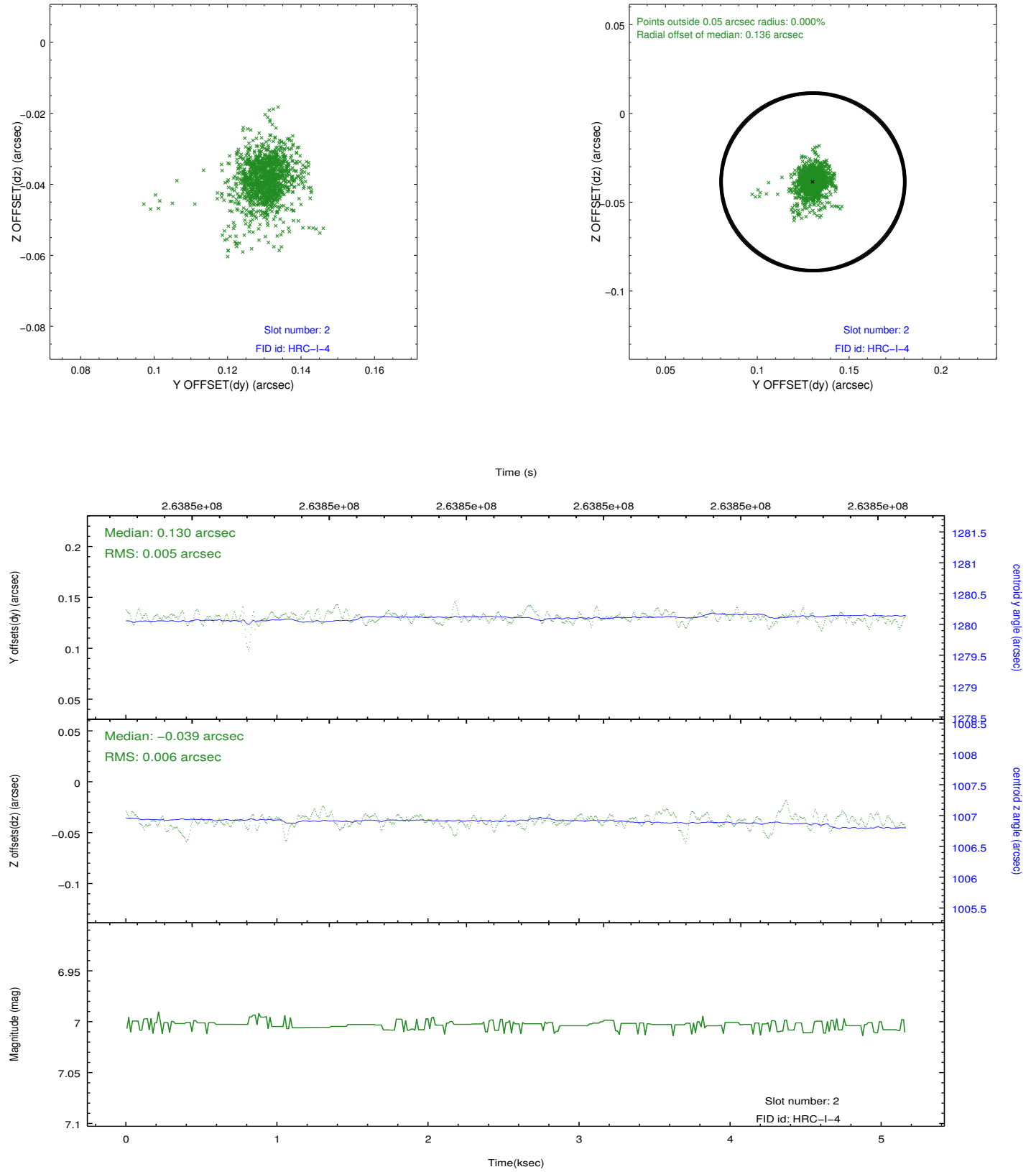
### 2.5.1 Slot 0



## 2.5.2 Slot 1



### 2.5.3 Slot 2



## A Summary

### A.1 Status

V&V Scientist	Jen Lauer
V&V Date (YYYY-MM-DD)	2012.08.13
V&V Edition	1
V&V Disposition and Status	OK
V&V Charge Time	5.15703149

### A.2 Comments