

# V&V Reference Report

## L2 ASCDS Version : 7.6.7.1

Observation 6324 - L2 Version 002  
Chandra X-Ray Center

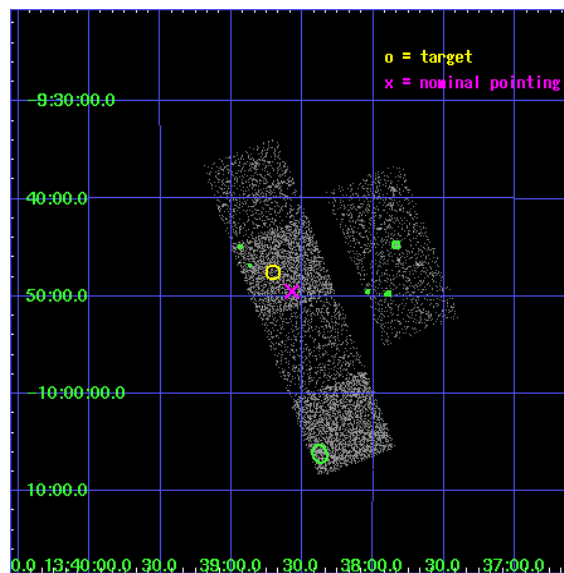
L2 Processing Date : Mar 12 2006

## Contents

<b>1</b>	<b>Front</b>	<b>2</b>
<b>2</b>	<b>OBI</b>	<b>3</b>
2.1	OBI . . . . .	3
2.1.1	Images . . . . .	3
2.1.2	Bias . . . . .	3
2.1.3	Parameters . . . . .	4
2.1.4	Events . . . . .	4
2.2	Compared Parameters . . . . .	5
2.3	Aspect . . . . .	6
2.4	Star Slots . . . . .	9
2.4.1	Slot 3 . . . . .	9
2.4.2	Slot 4 . . . . .	10
2.4.3	Slot 5 . . . . .	11
2.4.4	Slot 6 . . . . .	12
2.4.5	Slot 7 . . . . .	13
2.5	FID Slots . . . . .	14
2.5.1	Slot 0 . . . . .	14
2.5.2	Slot 1 . . . . .	15
2.5.3	Slot 2 . . . . .	16
<b>3</b>	<b>Point Sources</b>	<b>17</b>
<b>A</b>	<b>Summary</b>	<b>18</b>
A.1	Status . . . . .	18
A.2	Comments . . . . .	18

# 1 Front

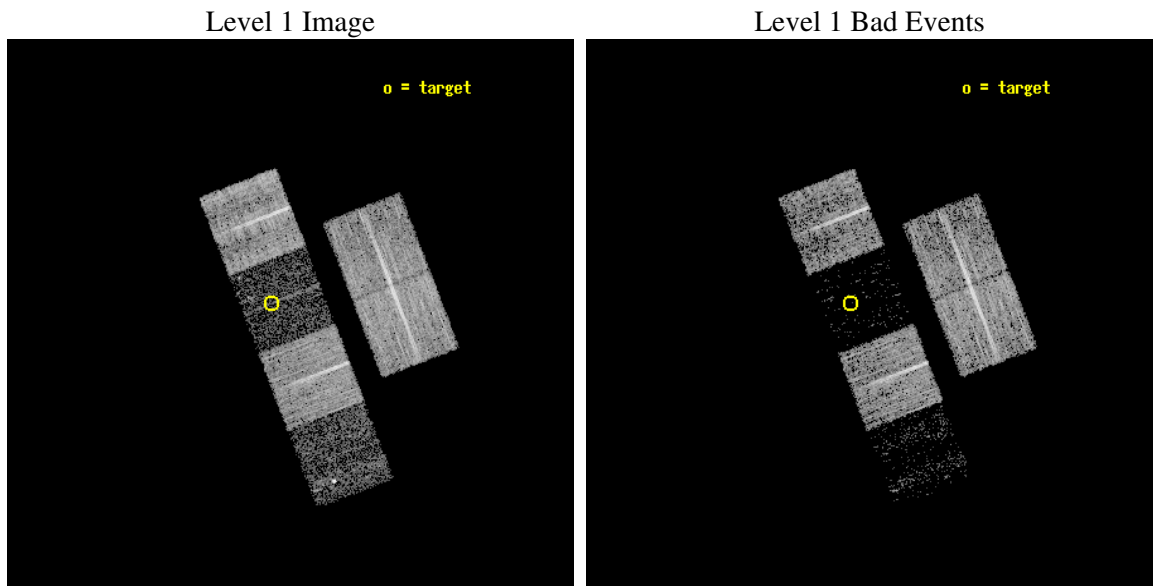
seq_num	100060
obs_id	6324
title	Comet 9P/Tempel 1 During the Deep Impact Encounter
observer	Dr. Carey Lisse
object	9P/Tempel 1
dtcycle	0
cycle	P
ra_targ	204.676405
dec_targ	-9.792211
ra_nom	204.6433352336
dec_nom	-9.8254517566712
roll_nom	248.88446518492
revision	2
ontime	7180.7999732494
livetime	7089.8723602295
ontime2	7180.7999732494
ontime3	7180.7999732494
ontime5	7180.7999732494
ontime6	7174.3180127442
ontime7	7180.7999732494
ontime8	7177.5590029657
l2events	10119



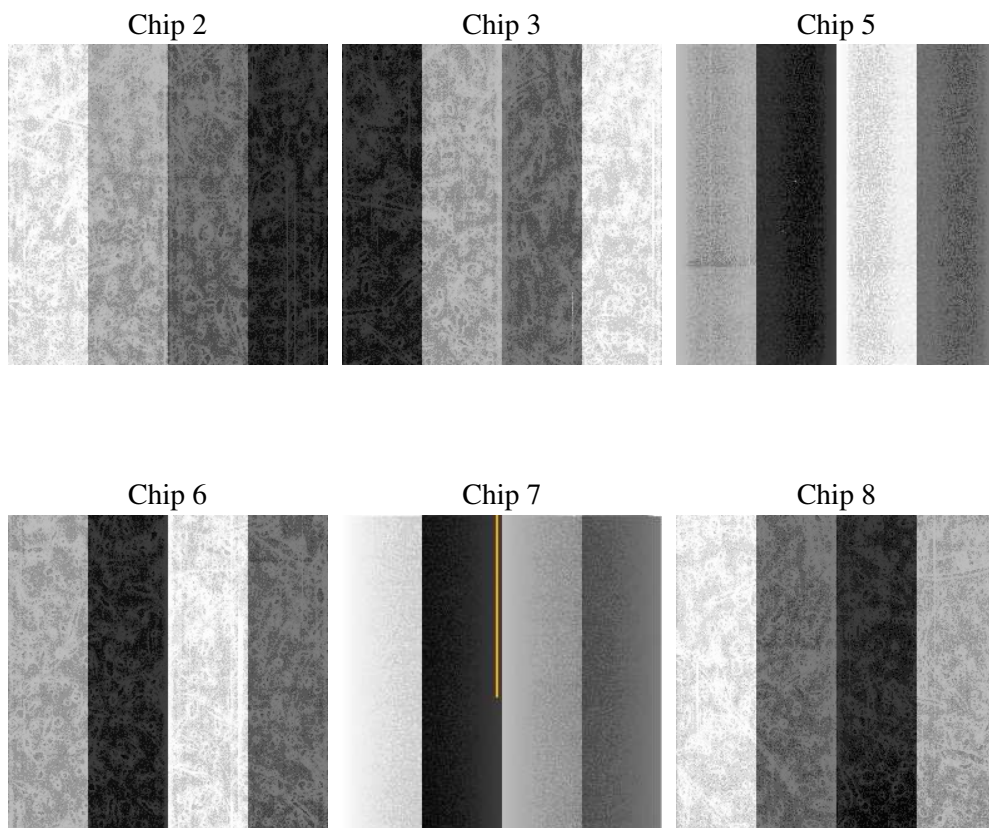
## 2 OBI

### 2.1 OBI

#### 2.1.1 Images



#### 2.1.2 Bias



### 2.1.3 Parameters

obi_num	0
ascdsver	7.6.7.1
caldbver	3.2.1
date	2006-03-12T03:58:41
revision	2

sched_exp_time	7000.000000
ontime	7509.4030332863
ontime2	7509.4030133486
ontime3	7509.4030133486
ontime5	7509.4030332863
ontime6	7502.9210528433
ontime7	7509.4030332863
ontime8	7506.1620630026
l1events	146553

### 2.1.4 Events

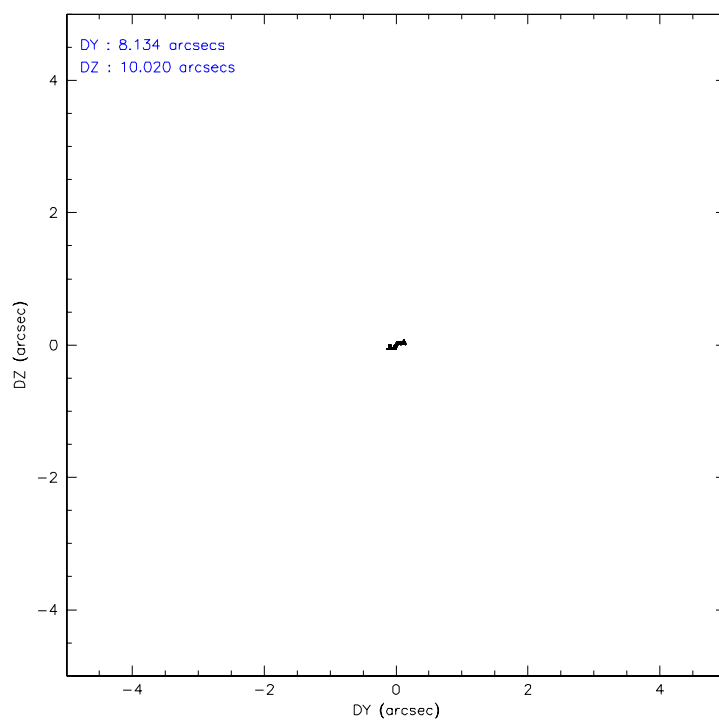
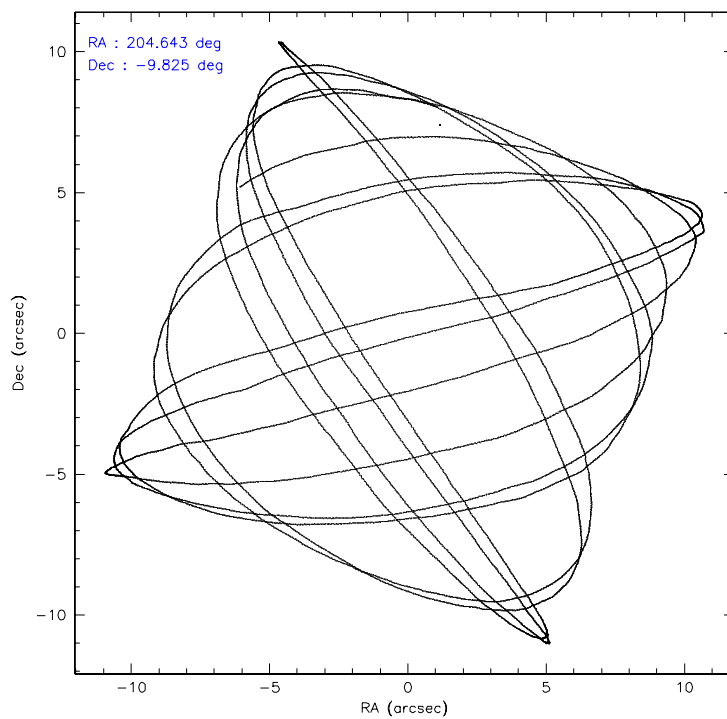
	ccd 2	ccd 3	ccd 5	ccd 6	ccd 7	ccd 8
level 1 events	37699	30307	6472	31677	4687	35711
rejected events	36125	29215	2269	30305	1187	27031
rejected %	95%	96%	35%	95%	25%	75%

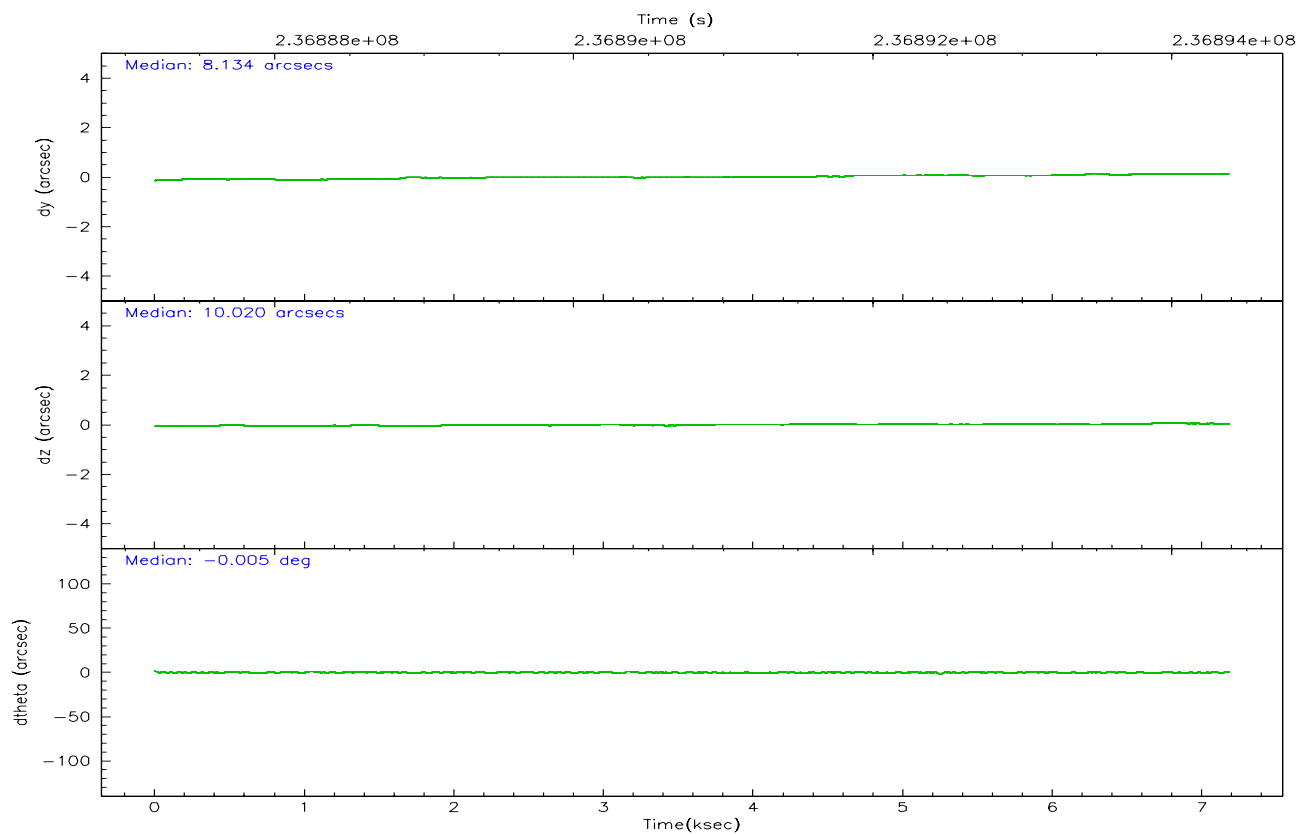
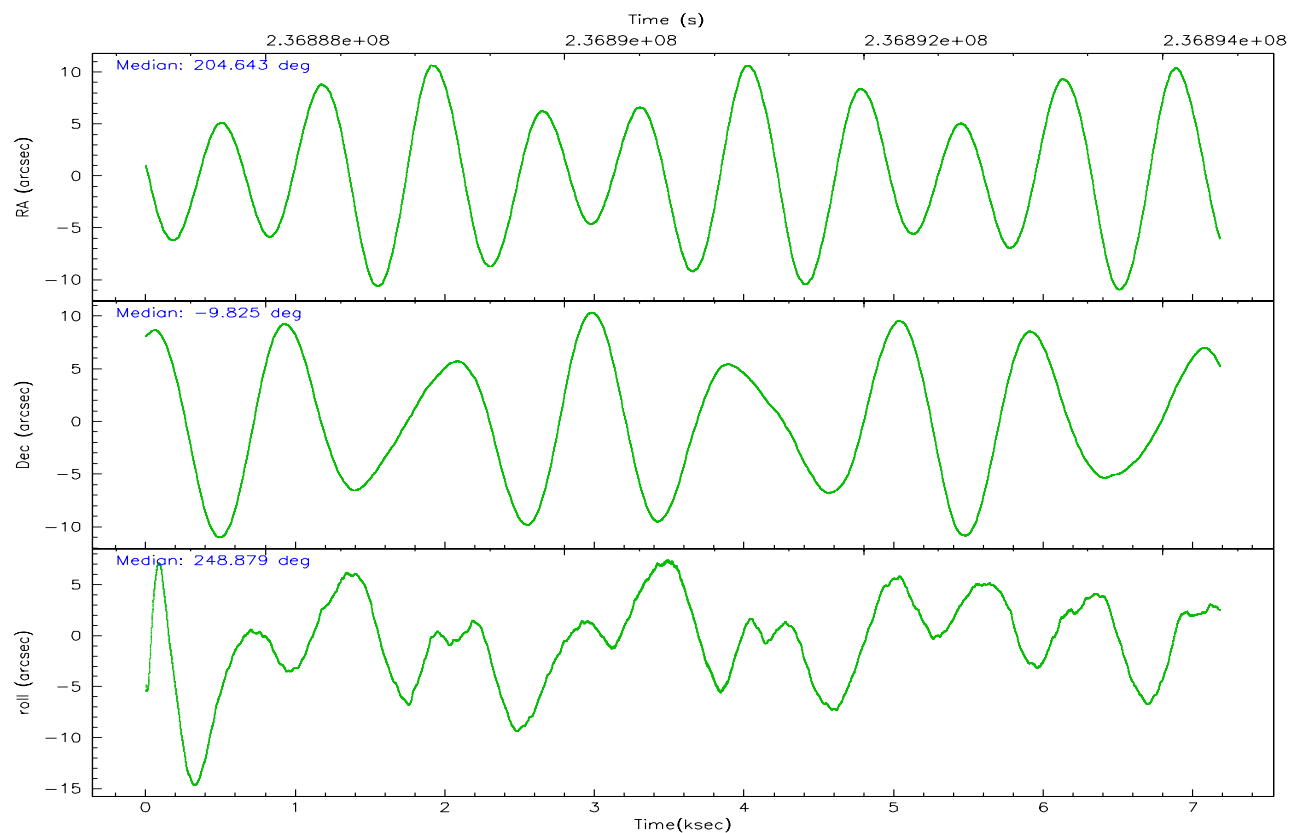
	ccd 2	ccd 3	ccd 5	ccd 6	ccd 7	ccd 8
grade 0 events	708	536	1241	626	864	2449
	1%	1%	19%	1%	18%	6%
grade 1 events	12	7	15	10	18	19
	0%	0%	0%	0%	0%	0%
grade 2 events	396	136	1712	277	1268	1986
	1%	0%	26%	0%	27%	5%
grade 3 events	191	208	479	222	558	1130
	0%	0%	7%	0%	11%	3%
grade 4 events	215	168	427	198	528	1054
	0%	0%	6%	0%	11%	2%
grade 5 events	54	29	303	25	126	154
	0%	0%	4%	0%	2%	0%
grade 6 events	140	101	520	110	445	2460
	0%	0%	8%	0%	9%	6%
grade 7 events	35983	29122	1775	30209	880	26459
	95%	96%	27%	95%	18%	74%

## 2.2 Compared Parameters

Parameter	Planned	Actual	Parameter	Planned	Actual
Instrument	ACIS	ACIS	Obspar format version number	6	6
Detector	ACIS-235678	ACIS-235678	Obspar file type	PREDICTED	ACTUAL
Grating	NONE	NONE	Obspar update status	NONE	UPDATED
Data mode	VFAINT	VFAINT	On-chip summing requested	N	N
Observation mode	POINTING	POINTING	Subarray requested	NONE	NONE
Pointing RA	204.638684	204.643335233596	Alternating exposures requested	N	N
Pointing Dec	-9.798666	-9.825451756671233	Primary exposure time	0.000000	3.2
Pointing Roll	248.727047	248.88446518492			
SIM focus pos (mm)	-0.684267	-0.6828225247311905			
SIM defocus (mm)	0	0.001444936568705701			
SIM translation stage pos (mm)	-190.132523	-190.145094680475			
SIM translation stage offset (mm)	0	0.01257209746719923			
Observation start time	236887383.184000	236887006.92427			
Observation start date	2005-07-04T18:01:59	2005-07-04T17:56:46			
Observation end time	236894383.184000	236894517.09961			
Observation end date	2005-07-04T19:58:39	2005-07-04T20:01:57			
Read mode	TIMED	TIMED			

## 2.3 Aspect





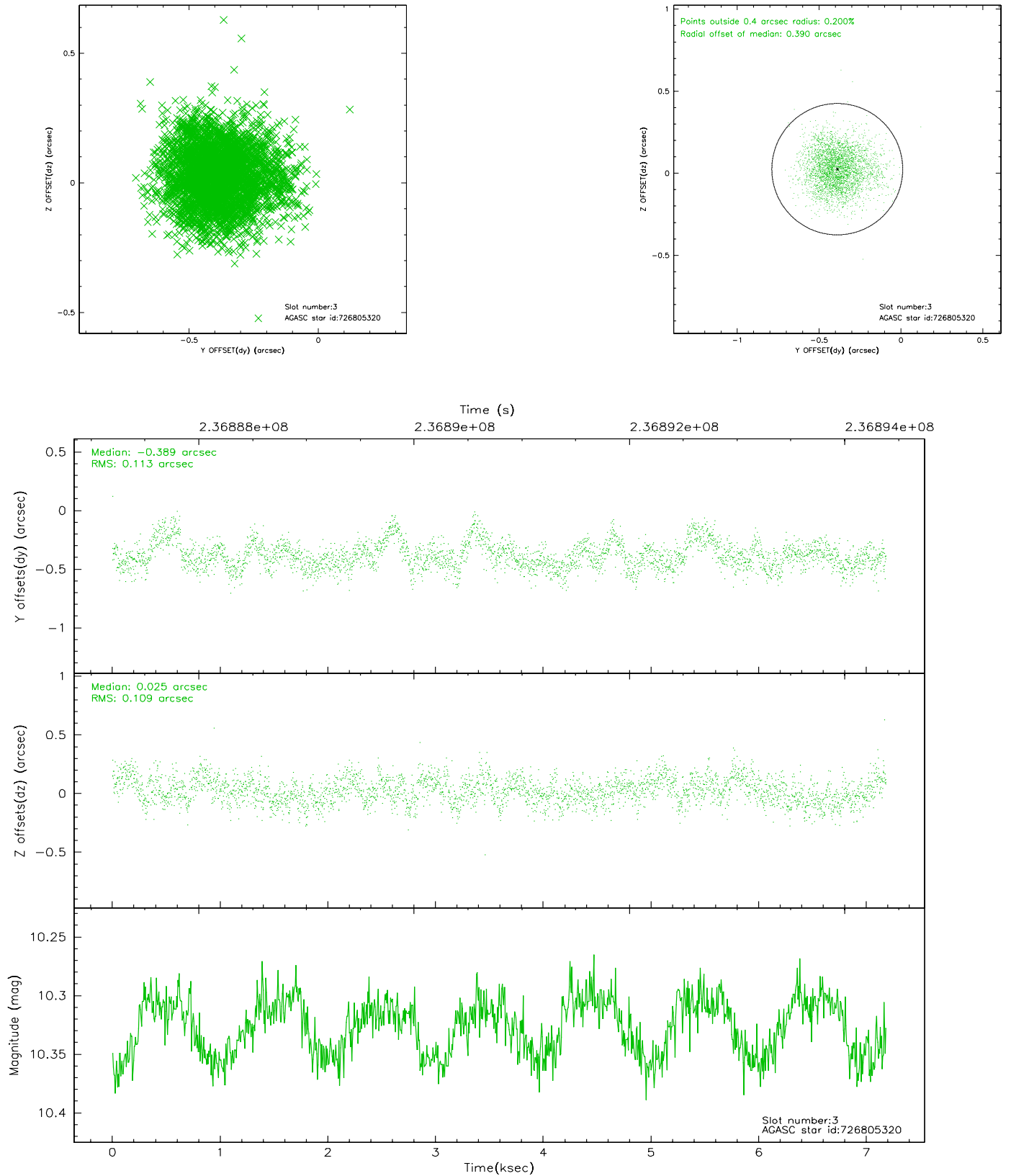
### Slot Statistics

slot	status	id	mag	n_pts	med_dy	med_dz	dr1	dr2	ra	dec	mean_y	mean_z
0	FID	ACIS-S-2	7.10	1752	-0.029	-0.004	0.006	0.010	0.000000	0.000000	-760.91	-1731.19
1	FID	ACIS-S-4	7.20	1752	0.080	0.015	0.006	0.012	0.000000	0.000000	2152.07	176.56
2	FID	ACIS-S-5	7.23	1752	-0.083	-0.003	0.007	0.012	0.000000	0.000000	-1812.82	171.03
3	GUIDE	726805320	10.33	3499	-0.389	0.025	0.167	0.267	204.212849	-9.734967	335.77	-1490.73
4	GUIDE	726932888	9.58	3502	-0.506	0.086	0.101	0.164	204.640397	-9.165404	-2126.22	-821.91
5	GUIDE	726935840	9.51	3503	0.708	-0.590	0.096	0.164	205.084608	-9.297514	-2254.41	821.30
6	GUIDE	727320712	10.44	3490	0.171	0.074	0.245	0.385	204.468965	-10.254166	1746.60	35.35
7	GUIDE	727321032	9.97	3497	-0.000	0.412	0.178	0.324	205.073686	-10.196206	776.48	1956.44

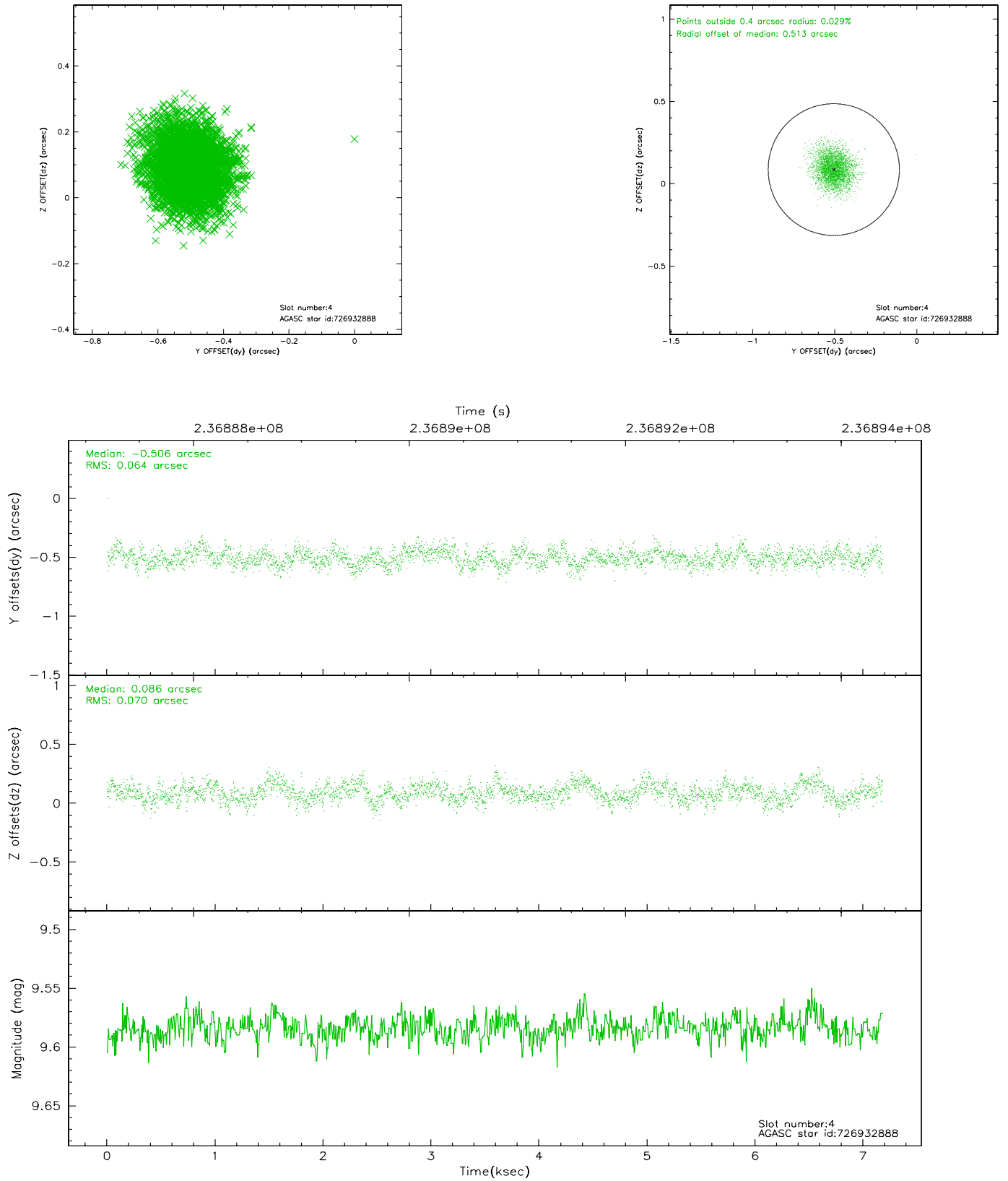


## 2.4 Star Slots

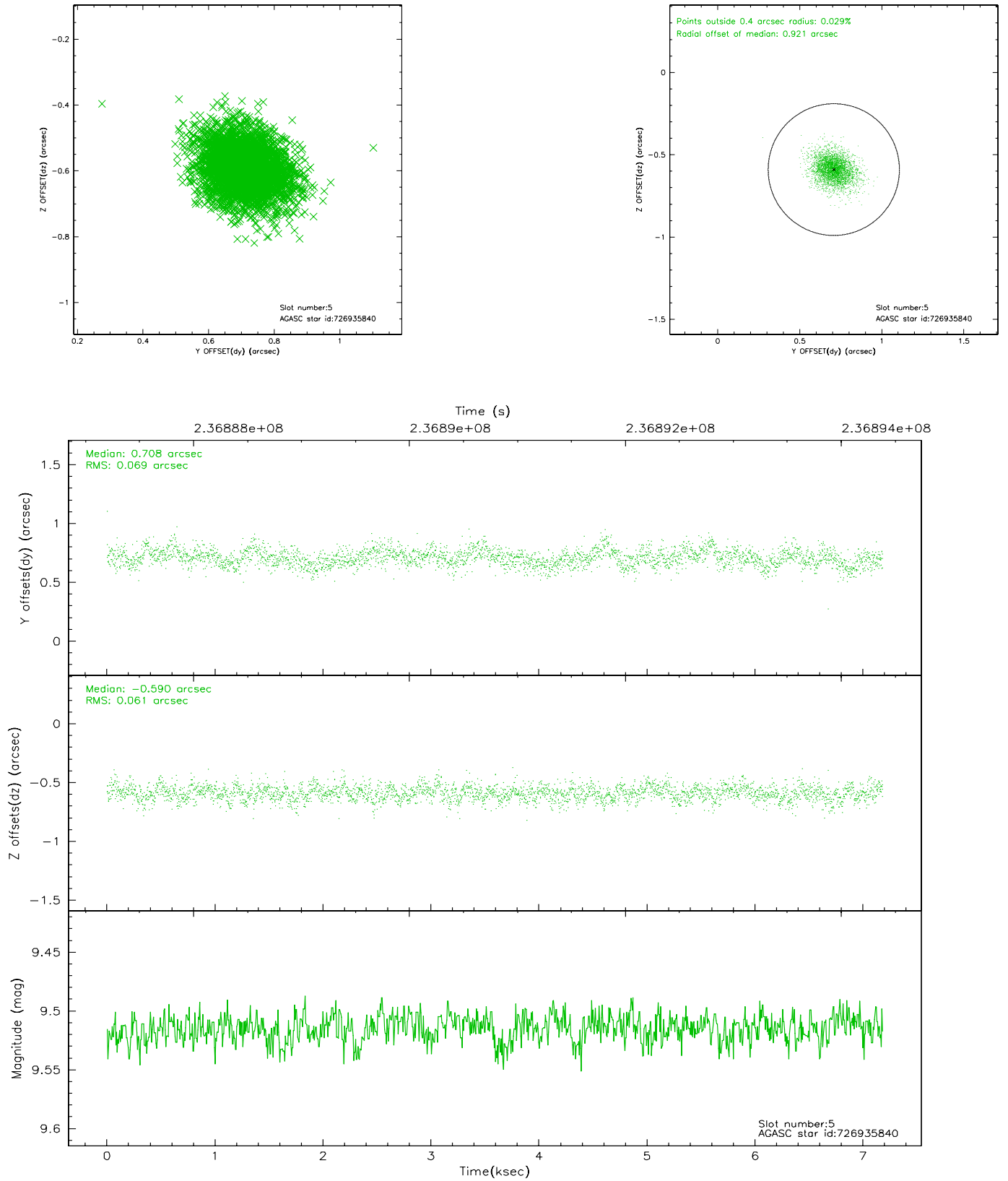
### 2.4.1 Slot 3



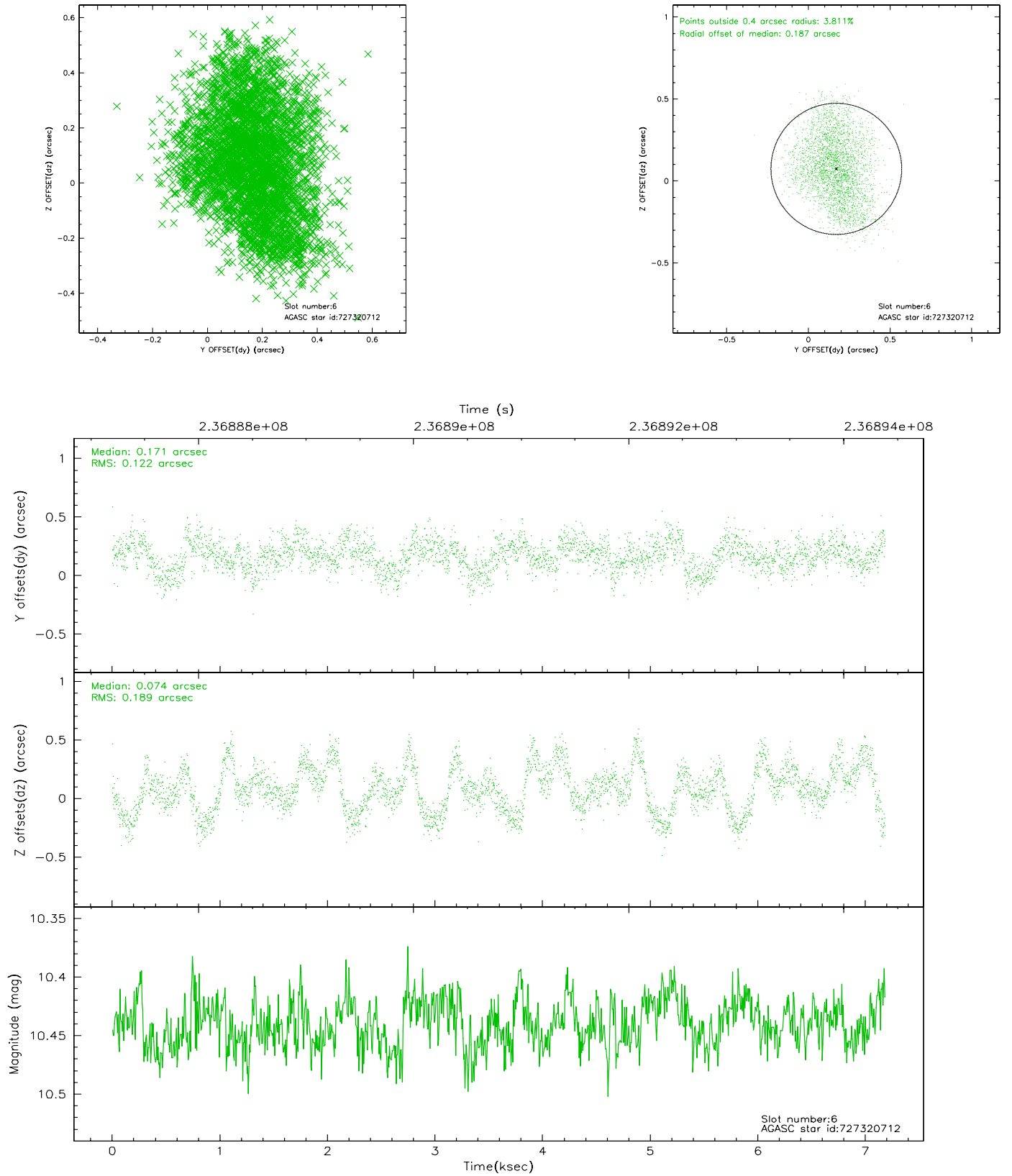
## 2.4.2 Slot 4



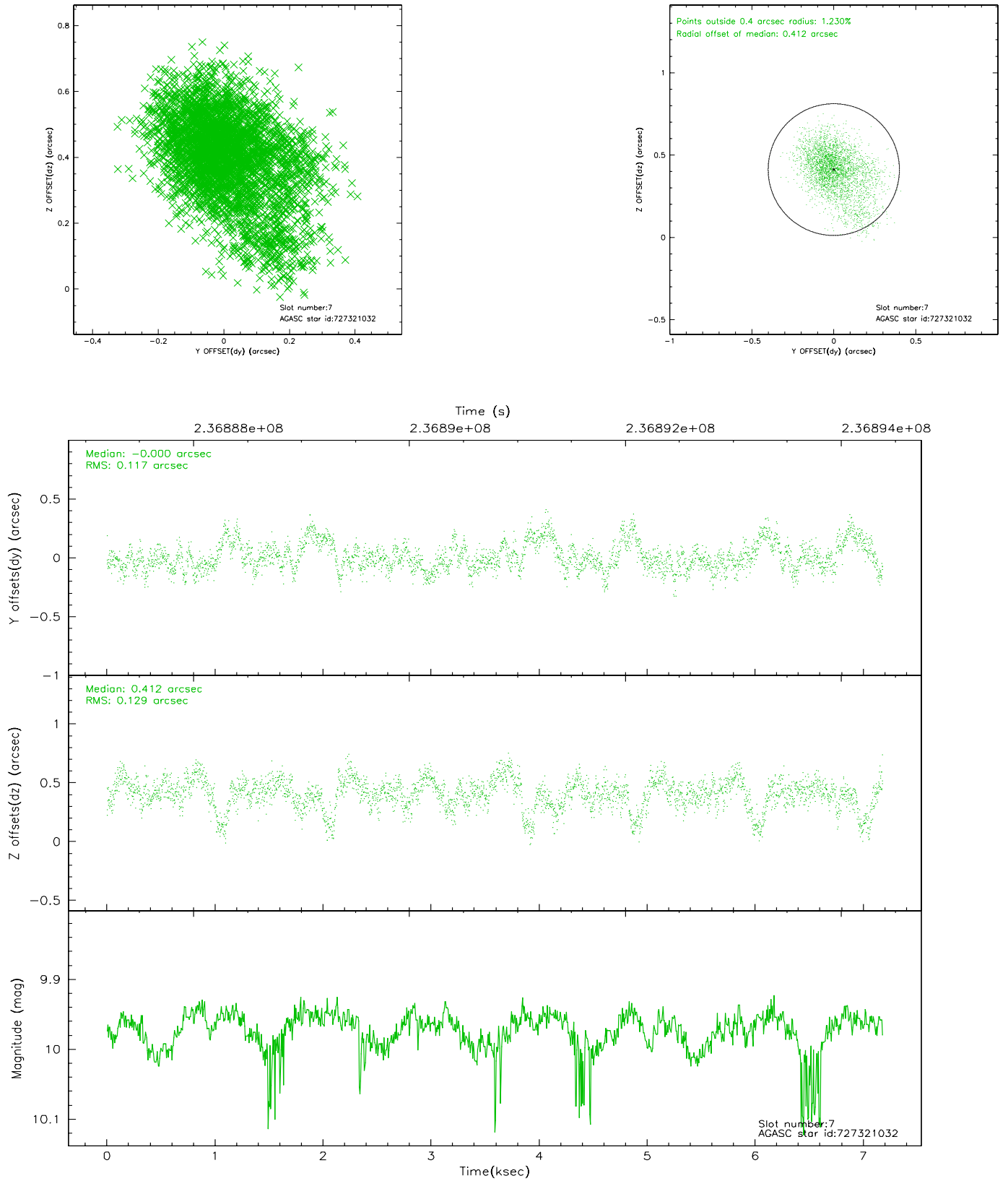
### 2.4.3 Slot 5



## 2.4.4 Slot 6

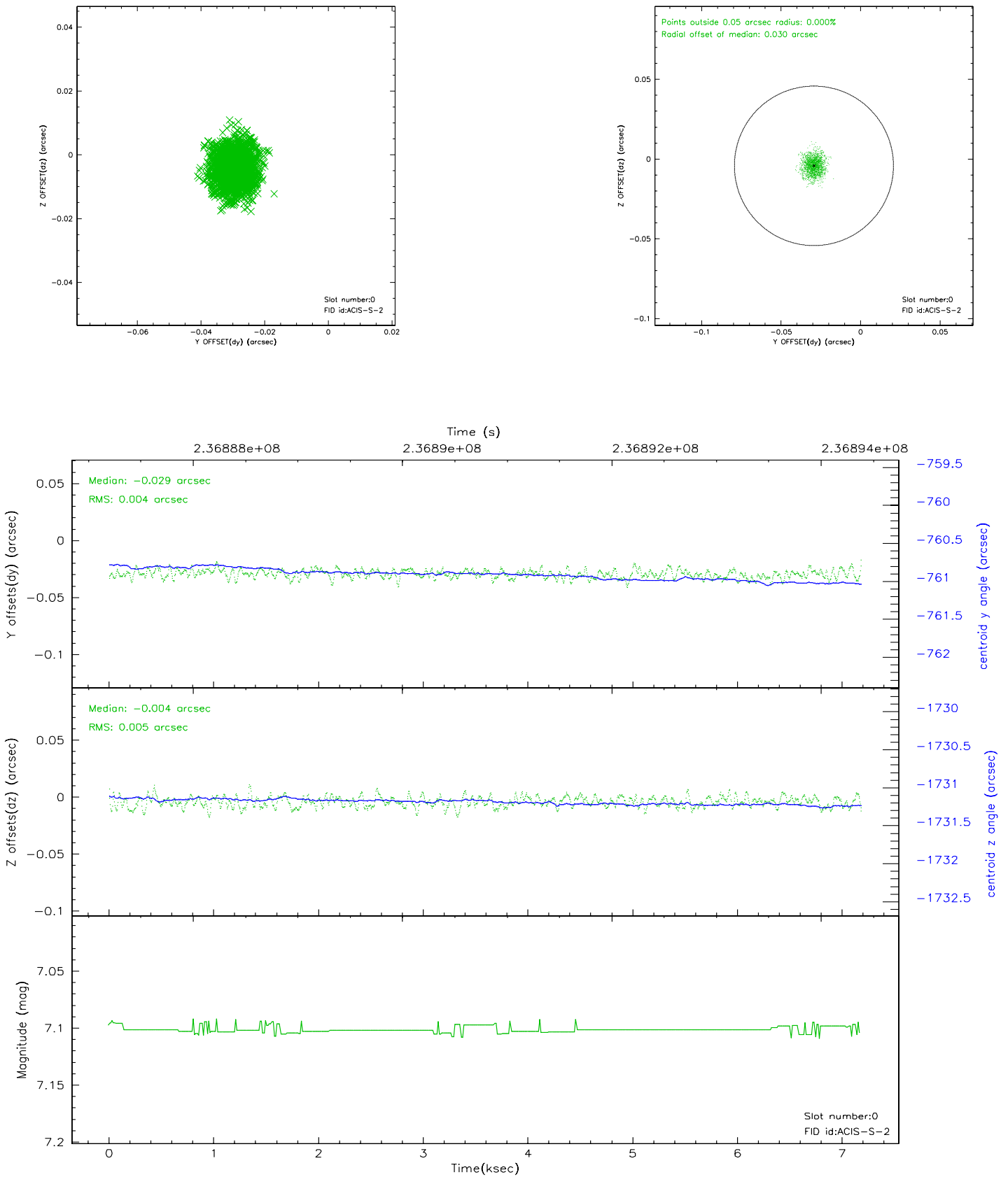


## 2.4.5 Slot 7

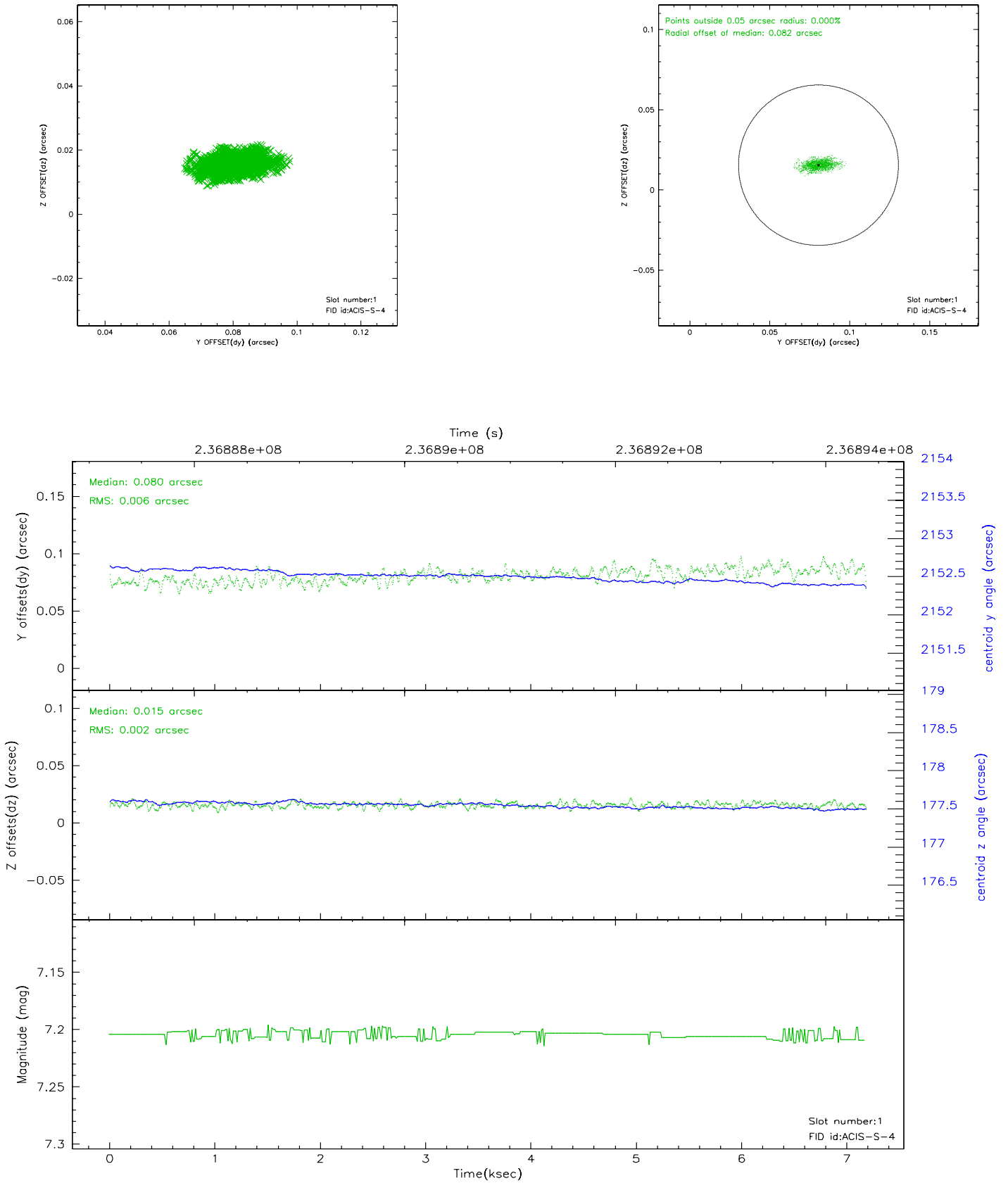


## 2.5 FID Slots

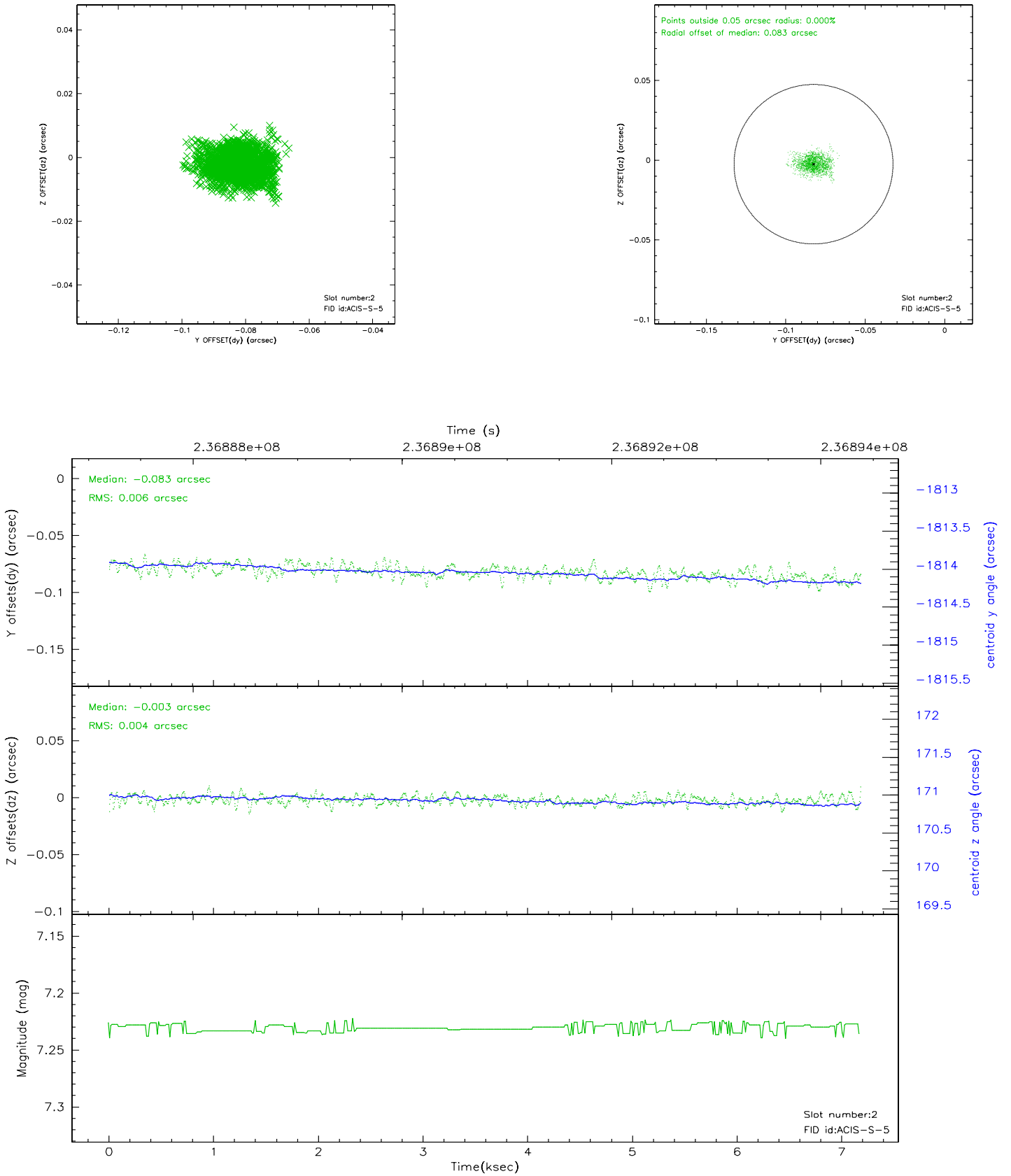
### 2.5.1 Slot 0



## 2.5.2 Slot 1

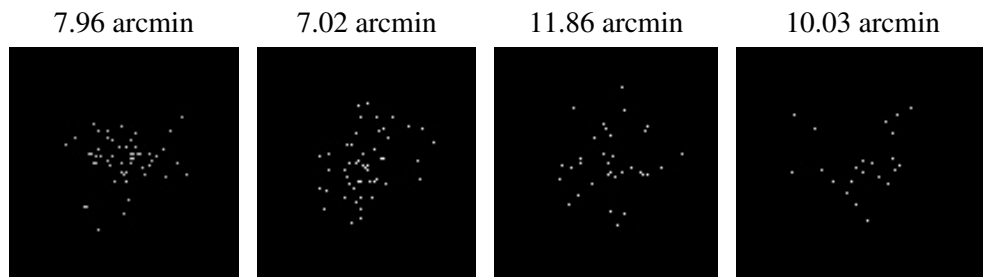


### 2.5.3 Slot 2





### 3 Point Sources



## A Summary

### A.1 Status

V&V Scientist	Jen Lauer
V&V Date (YYYY-MM-DD)	2006.03.13
V&V Edition	1
V&V Disposition and Status	OK
V&V Charge Time	7.180799

### A.2 Comments