

V&V Reference Report

L2 ASCDS Version : 8.4.5

Observation 62894 - L2 Version 5
Chandra X-Ray Center

L2 Processing Date : Aug 25 2012

Contents

1	Front	2
2	OBI	3
2.1	OBI	3
2.1.1	Images	3
2.1.2	Bias	3
2.1.3	Parameters	4
2.1.4	Events	4
2.2	Compared Parameters	5
2.3	Star Slots	6
2.4	FID Slots	6
A	Summary	7
A.1	Status	7
A.2	Comments	7

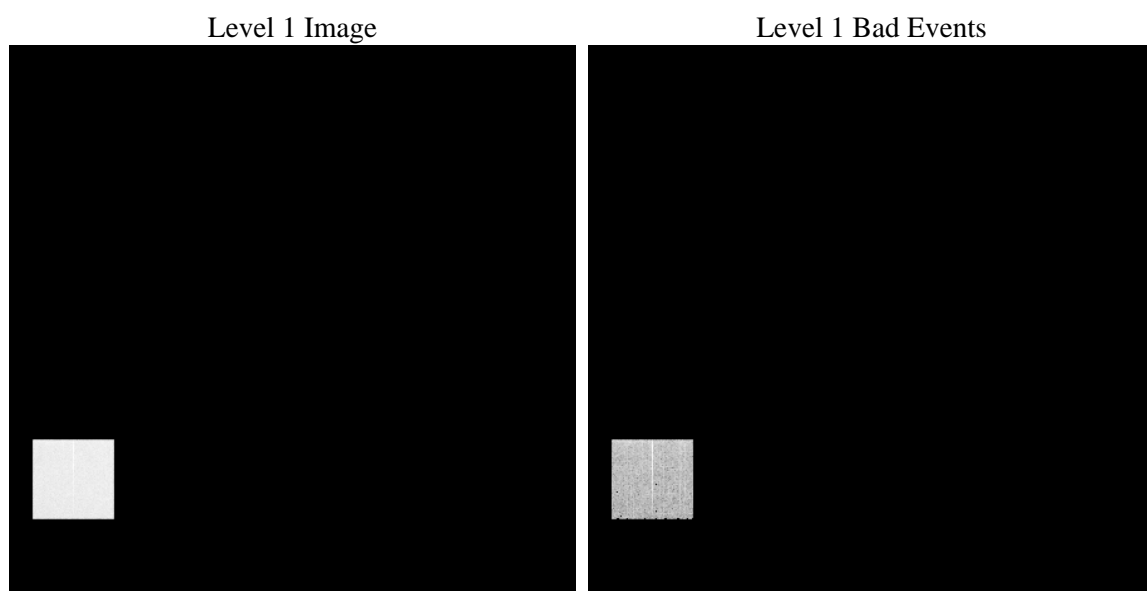
1 Front

seq_num	 	Sequence number
obs_id	62894	Observation id
title	ACIS-4 diagnostics; squeegee, S0 16 row, CAP 591	Proposal title
observer	CHANDRA engineering request/realtime commanding	Principal investig
object	 	Source name
dtcycle	0	
cycle	P	events from which exps? Prim/Second/Both
ra_targ	0.0	Observer's specified target RA [deg]
dec_targ	0.0	Observer's specified target Dec [deg]
ra_nom	196.97334754075	Nominal RA [deg]
dec_nom	23.984541203199	Nominal Dec [deg]
roll_nom	180.23968013021	Nominal Roll [deg]
revision	5	Processing version of data
ontime	3787.5497443527	Sum of GTIs [s]
livetime	3741.0249971158	Livetime [s]
ontime4	3787.5497443527	Sum of GTIs [s]
l2events	249502	Number of level 2 events

2 OBI

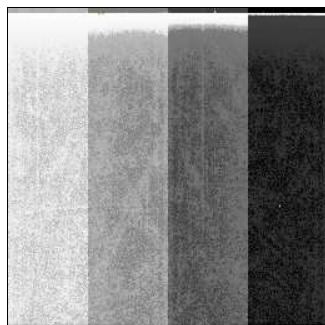
2.1 OBI

2.1.1 Images



2.1.2 Bias

Chip 4



2.1.3 Parameters

obi_num	0	Obi number			
ascdsver	8.4.5	Processing system revision	sched_exp_time	0.0	[s] Scheduled observation exposure time
caldbver	4.5.1.1	 	ontime	3787.5497443527	Sum of GTIs [s]
date	2012-08-25T15:52:21	Date and time of file creation	ontime4	3787.5497443527	Sum of GTIs [s]
revision	5	Processing version of data	l1events	344283	Number of level 1 events

2.1.4 Events

	ccd 4
level 1 events	344283
rejected events	40910
rejected %	11%

	ccd 4
grade 0 events	171662
	49%
grade 1 events	967
	0%
grade 2 events	53232
	15%
grade 3 events	19317
	5%
grade 4 events	19022
	5%
grade 5 events	2487
	0%
grade 6 events	40406
	11%
grade 7 events	37190
	10%

2.2 Compared Parameters

Parameter	Planned	Actual	Parameter	Planned	Actual
Instrument	ACIS	ACIS	Obspar format version number	7	7
Detector	ACIS-4	ACIS-4	Obspar file type	PREDICTED	ACTUAL
Grating	NONE	NONE	Obspar update status	NONE	UPDATED
Data mode	FAINT	FAINT	On-chip summing requested	N	N
Observation mode	SECONDARY	SECONDARY	Subarray requested	NONE	NONE
[deg] Pointing RA	0	196.9733475407454	Alternating exposures requested	N	N
[deg] Pointing Dec	0	23.98454120319894	[s] Primary exposure time	0.000000	3.3
[deg] Pointing Roll	0.0	180.2396801302095			
[mm] SIM focus pos	-0.684267	-0.6828225247311905			
[mm] SIM defocus	0	0.8505141146731063			
[mm] SIM translation stage pos	-190.132523	250.466033080201			
[mm] SIM translation stage offset	0	-0.01005468664627074			
[s] Observation start time (MET)	71543882.34199999	71543881.57313401			
Observation start date	2000-04-08T01:18:02	2000-04-08T01:18:01			
[s] Observation end time (MET)	71549599.792	71549599.023344			
Observation end date	2000-04-08T02:53:20	2000-04-08T02:53:19			
Read mode	TIMED	TIMED			

2.3 Star Slots

2.4 FID Slots

A Summary

A.1 Status

V&V Scientist	Jen Lauer
V&V Date (YYYY-MM-DD)	2012.08.28
V&V Edition	1
V&V Disposition and Status	OK
V&V Charge Time	3.7875497443527

A.2 Comments

Squeegee mode diagnostic observation; bias map is non-standard.