

V&V Reference Report

L2 ASCDS Version : 8.4.5

Observation 62854 - L2 Version 3
Chandra X-Ray Center

L2 Processing Date : Oct 1 2012

Contents

1	Front	2
2	OBI	3
2.1	OBI	3
2.1.1	Images	3
2.1.2	Bias	3
2.1.3	Parameters	4
2.1.4	Events	4
2.2	Compared Parameters	5
2.3	Star Slots	6
2.4	FID Slots	6
A	Summary	7
A.1	Status	7
A.2	Comments	7

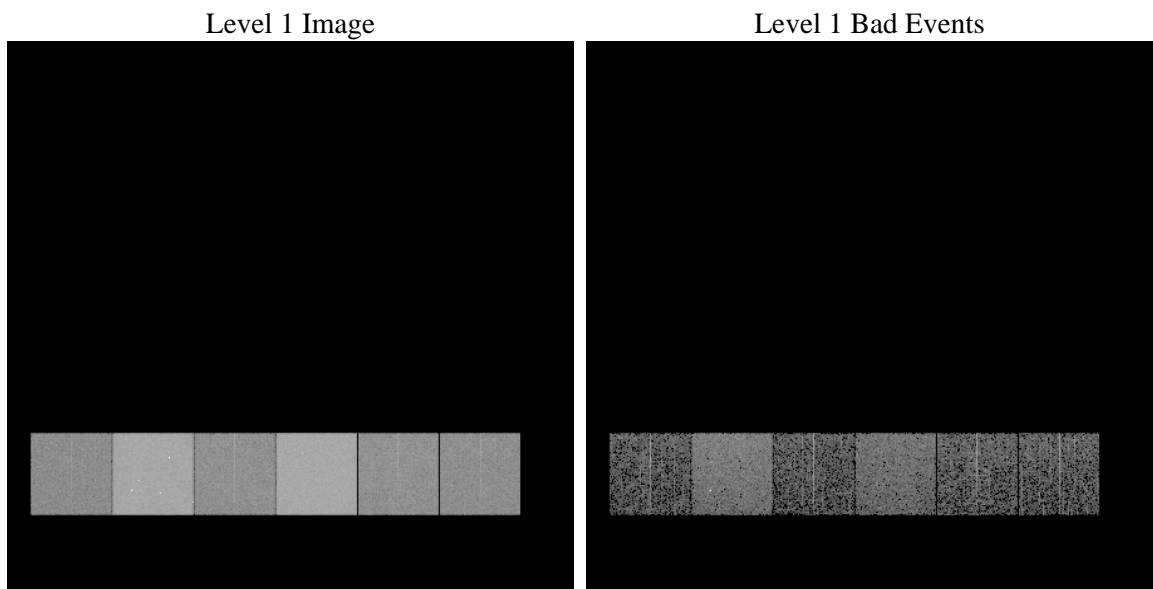
1 Front

seq_num	 	Sequence number
obs_id	62854	Observation id
title	ACIS-456789 diagnostics	Proposal title
observer	CHANDRA engineering request/realtime commanding	Principal investig
object	 	Source name
dtcycle	0	
cycle	P	events from which exps? Prim/Second/Both
ra_targ	0.0	Observer's specified target RA [deg]
dec_targ	0.0	Observer's specified target Dec [deg]
ra_nom	96.023789843861	Nominal RA [deg]
dec_nom	5.9838143900827	Nominal Dec [deg]
roll_nom	292.8768342953	Nominal Roll [deg]
revision	3	Processing version of data
ontime	3856.9571177661	Sum of GTIs [s]
livetime	3808.1180043602	Livetime [s]
ontime4	1470.6918792725	Sum of GTIs [s]
ontime5	4106.5112082213	Sum of GTIs [s]
ontime6	1606.7743195742	Sum of GTIs [s]
ontime7	3856.9571177661	Sum of GTIs [s]
ontime8	1619.8203402907	Sum of GTIs [s]
ontime9	1554.7946593761	Sum of GTIs [s]
l2events	736280	Number of level 2 events

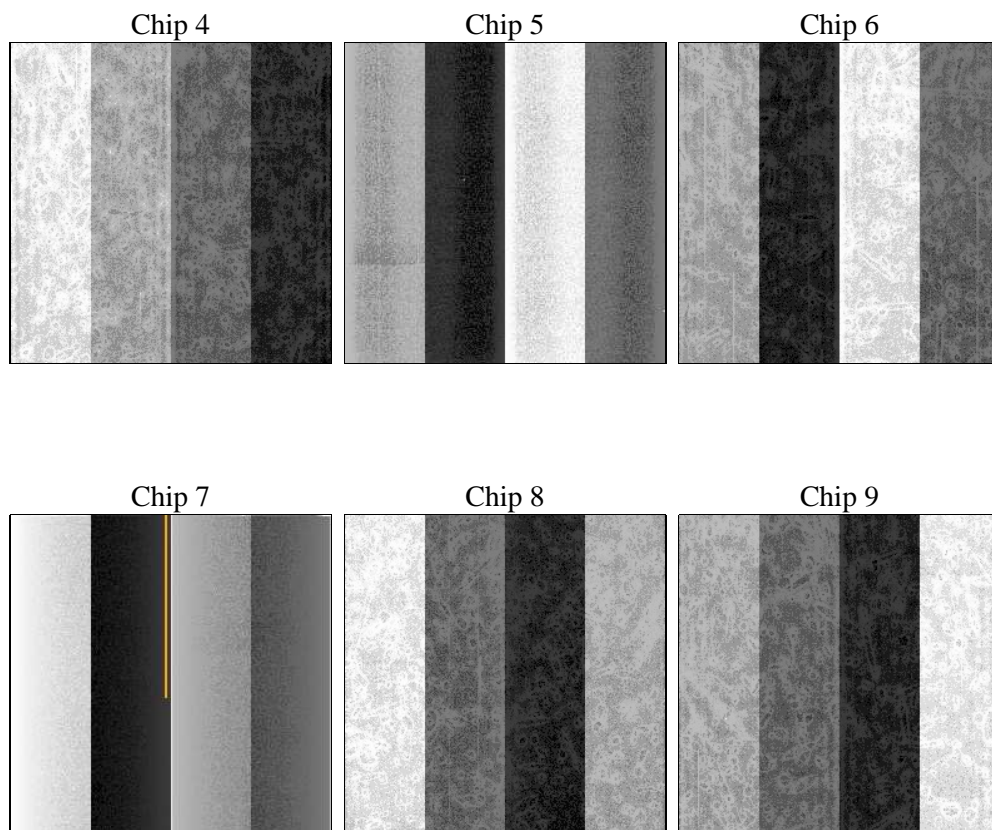
2 OBI

2.1 OBI

2.1.1 Images



2.1.2 Bias



2.1.3 Parameters

obi_num	0	Obi number	sched_exp_time	0.0	[s] Scheduled observation exposure time
ascdsver	8.4.5	Processing system revision	ontime	3856.9571177661	Sum of GTIs [s]
caldsver	4.5.2	 	ontime4	1470.6918792725	Sum of GTIs [s]
date	2012-10-01T10:38:22	Date and time of file creation	ontime5	4106.5112082213	Sum of GTIs [s]
revision	3	Processing version of data	ontime6	1606.7743195742	Sum of GTIs [s]
			ontime7	3856.9571177661	Sum of GTIs [s]
			ontime8	1619.8203402907	Sum of GTIs [s]
			ontime9	1554.7946593761	Sum of GTIs [s]
			l1events	866885	Number of level 1 events

2.1.4 Events

	ccd 4	ccd 5	ccd 6	ccd 7	ccd 8	ccd 9		ccd 4	ccd 5	ccd 6	ccd 7	ccd 8	ccd 9
level 1 events	89925	233405	103269	237723	105618	96945	grade 0 events	44368	51360	49982	55999	51134	46693
rejected events	11479	28618	11296	19692	12899	12081		49%	22%	48%	23%	48%	48%
rejected %	12%	12%	10%	8%	12%	12%	grade 1 events	230	184	260	134	228	218
								0%	0%	0%	0%	0%	0%
							grade 2 events	13889	72239	15999	48346	16389	14896
								15%	30%	15%	20%	15%	15%
							grade 3 events	4869	13159	5684	21982	5843	5154
								5%	5%	5%	9%	5%	5%
							grade 4 events	4771	13106	5721	22241	5758	5179
								5%	5%	5%	9%	5%	5%
							grade 5 events	740	5550	879	3968	941	880
								0%	2%	0%	1%	0%	0%
							grade 6 events	10549	55074	14587	69636	13595	12942
								11%	23%	14%	29%	12%	13%
							grade 7 events	10509	22733	10157	15417	11730	10983
								11%	9%	9%	6%	11%	11%

2.2 Compared Parameters

Parameter	Planned	Actual	Parameter	Planned	Actual
Instrument	ACIS	ACIS	Obspar format version number	7	7
Detector	ACIS-456789	ACIS-456789	Obspar file type	PREDICTED	ACTUAL
Grating	NONE	NONE	Obspar update status	NONE	UPDATED
Data mode	FAINT	FAINT	On-chip summing requested	N	N
Observation mode	SECONDARY	SECONDARY	Subarray requested	NONE	NONE
[deg] Pointing RA	0	96.02378984386075	Alternating exposures requested	N	N
[deg] Pointing Dec	0	5.983814390082676	[s] Primary exposure time	0.000000	3.2
[deg] Pointing Roll	0.0	292.8768342952985			
[mm] SIM focus pos	-0.684267	-0.6828225247311905			
[mm] SIM defocus	0	0.8505141146731063			
[mm] SIM translation stage pos	-190.132523	250.466033080201			
[mm] SIM translation stage offset	0	-0.01005468664627074			
[s] Observation start time (MET)	128616643.039	128616642.27035			
Observation start date	2002-01-28T14:50:43	2002-01-28T14:50:42			
[s] Observation end time (MET)	128624625.739	128624624.97067			
Observation end date	2002-01-28T17:03:46	2002-01-28T17:03:44			
Read mode	TIMED	TIMED			

2.3 Star Slots

2.4 FID Slots

A Summary

A.1 Status

V&V Scientist	Jen Lauer
V&V Date (YYYY-MM-DD)	2012.10.03
V&V Edition	1
V&V Disposition and Status	OK
V&V Charge Time	3.8569571177661

A.2 Comments