

V&V Reference Report

L2 ASCDS Version : 8.1.2

Observation 62554 - L2 Version 3

Chandra X-Ray Center

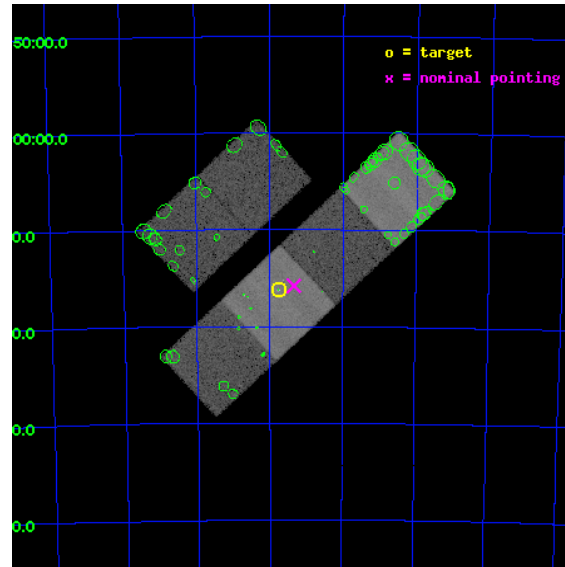
L2 Processing Date : Jul 10 2010

Contents

1	Front	2
2	OBI	3
2.1	OBI	3
2.1.1	Images	3
2.1.2	Bias	3
2.1.3	Parameters	4
2.1.4	Events	4
2.2	Compared Parameters	5
2.3	Aspect	6
2.4	Star Slots	9
2.4.1	Slot 3	9
2.4.2	Slot 4	10
2.4.3	Slot 5	11
2.4.4	Slot 6	12
2.4.5	Slot 7	13
2.5	FID Slots	14
2.5.1	Slot 2	14
3	Point Sources	15
A	Summary	16
A.1	Status	16
A.2	Comments	16

1 Front

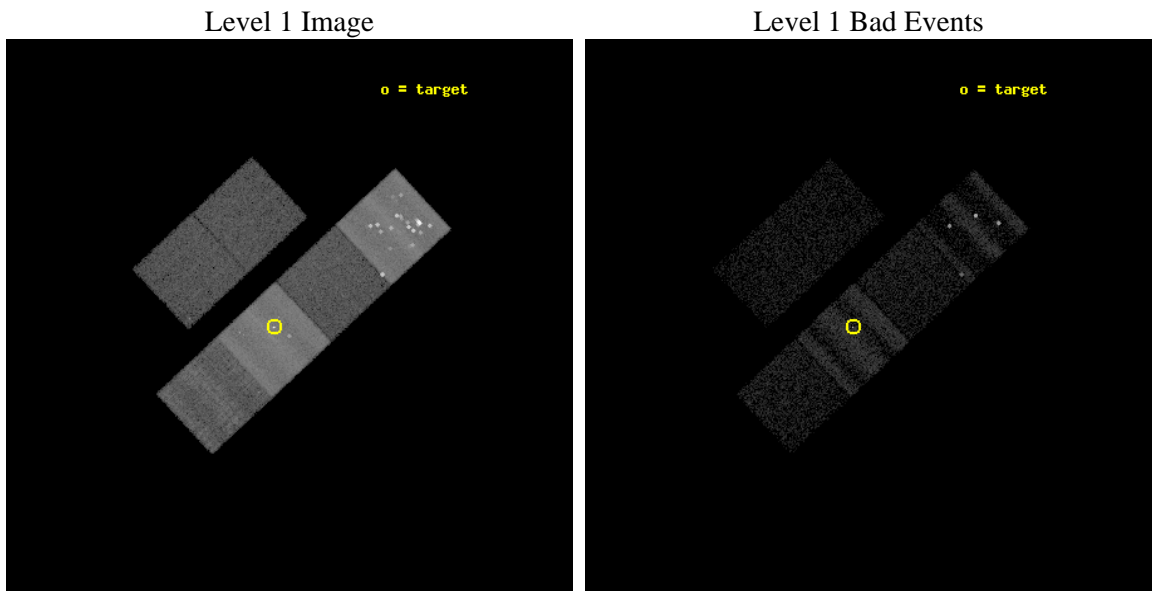
seq_num	780213	Sequence number
obs_id	62554	Observation id
title	ACIS Focus Test	Proposal title
observer	Dr. CXC Calibration	Principal investigator
object	PKS0637-752	Source name
dtcycle	0	
cycle	P	events from which exps? Prim/Second/Both
ra_targ	98.94	Observer's specified target RA
dec_targ	-75.27	Observer's specified target Dec
ra_nom	98.834611974236	Nominal RA
dec_nom	-75.263310367941	Nominal Dec
roll_nom	136.94956348361	Nominal Roll
revision	3	Processing version of data
ontime	11363.200010583	Sum of GTIs [s]
livetime	11219.312329951	Livetime [s]
ontime2	11363.200010583	Sum of GTIs [s]
ontime3	11363.200010583	Sum of GTIs [s]
ontime5	11363.200010583	Sum of GTIs [s]
ontime6	11363.200010583	Sum of GTIs [s]
ontime7	11363.200010583	Sum of GTIs [s]
ontime8	11363.200010583	Sum of GTIs [s]
l2events	255999	Number of level 2 events



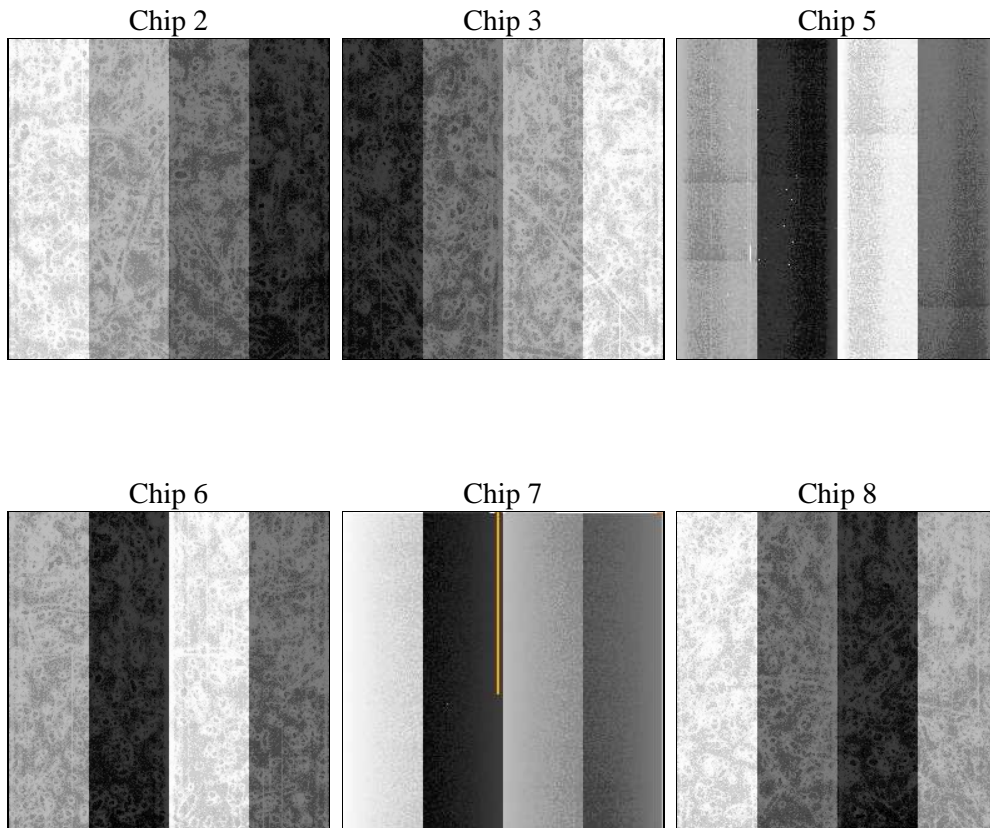
2 OBI

2.1 OBI

2.1.1 Images



2.1.2 Bias



2.1.3 Parameters

obi_num	1	Obi number	sched_exp_time	5000.000000	Scheduled observation exposure time
ascdsver	8.1.2	ASCDS version number	ontime	11363.200010583	Sum of GTIs [s]
caldsver	4.1.4	 	ontime2	11363.200010583	Sum of GTIs [s]
date	2009-12-14T05:52:33	Date and time of file creation	ontime3	11363.200010583	Sum of GTIs [s]
revision	4	Processing version of data	ontime5	11363.200010583	Sum of GTIs [s]
			ontime6	11363.200010583	Sum of GTIs [s]
			ontime7	11363.200010583	Sum of GTIs [s]
			ontime8	11363.200010583	Sum of GTIs [s]
			l1events	383901	Number of level 1 events

2.1.4 Events

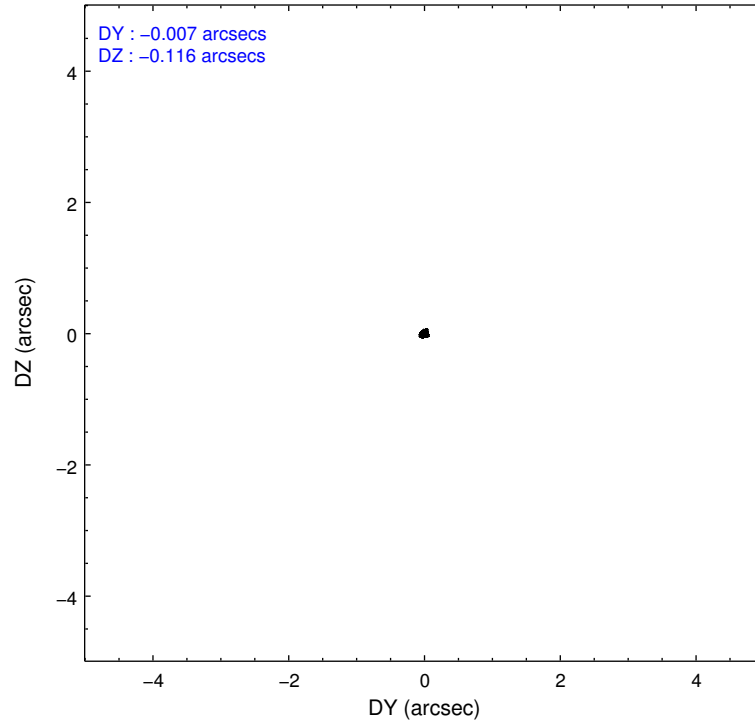
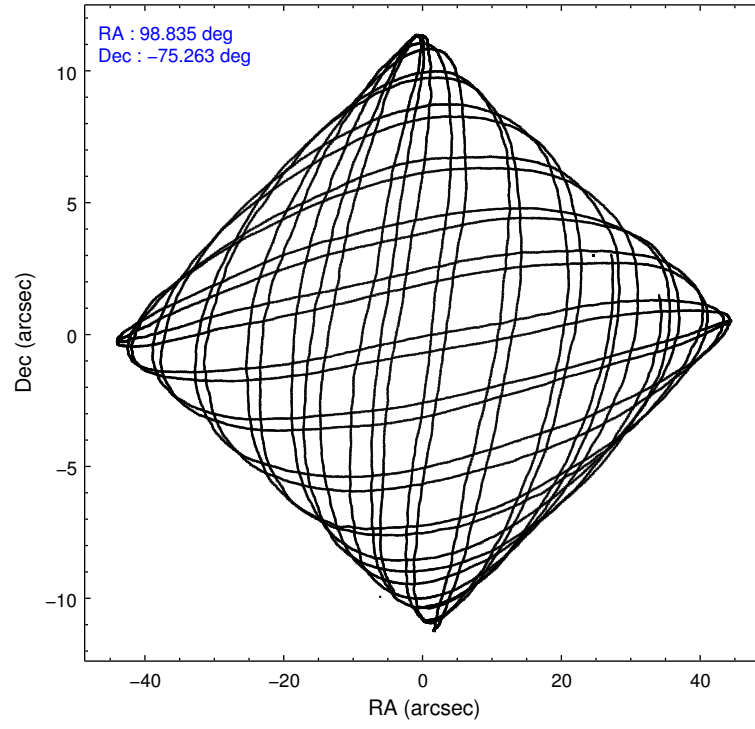
	ccd 2	ccd 3	ccd 5	ccd 6	ccd 7	ccd 8
level 1 events	28080	28212	149051	31534	105082	41942
rejected events	7619	7876	14111	9364	15990	9480
rejected %	27%	27%	9%	29%	15%	22%

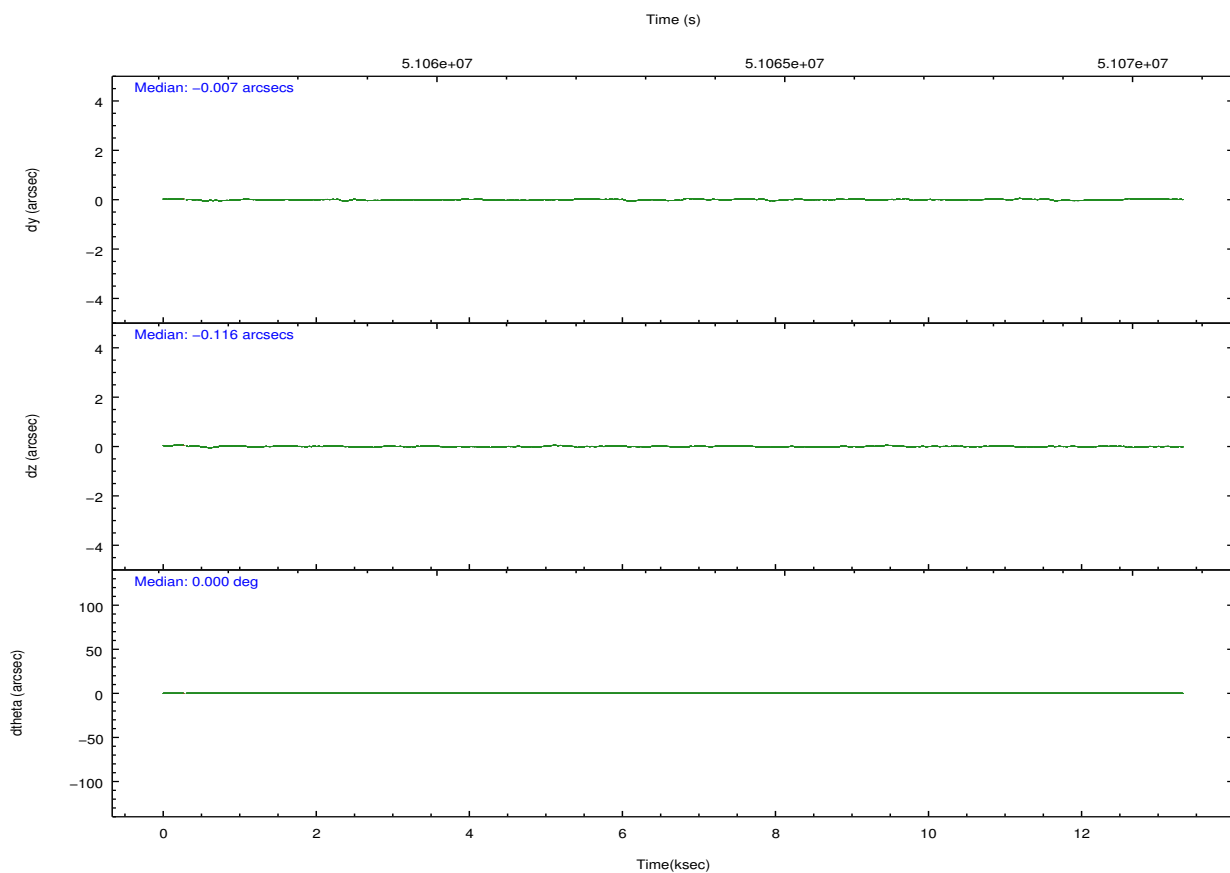
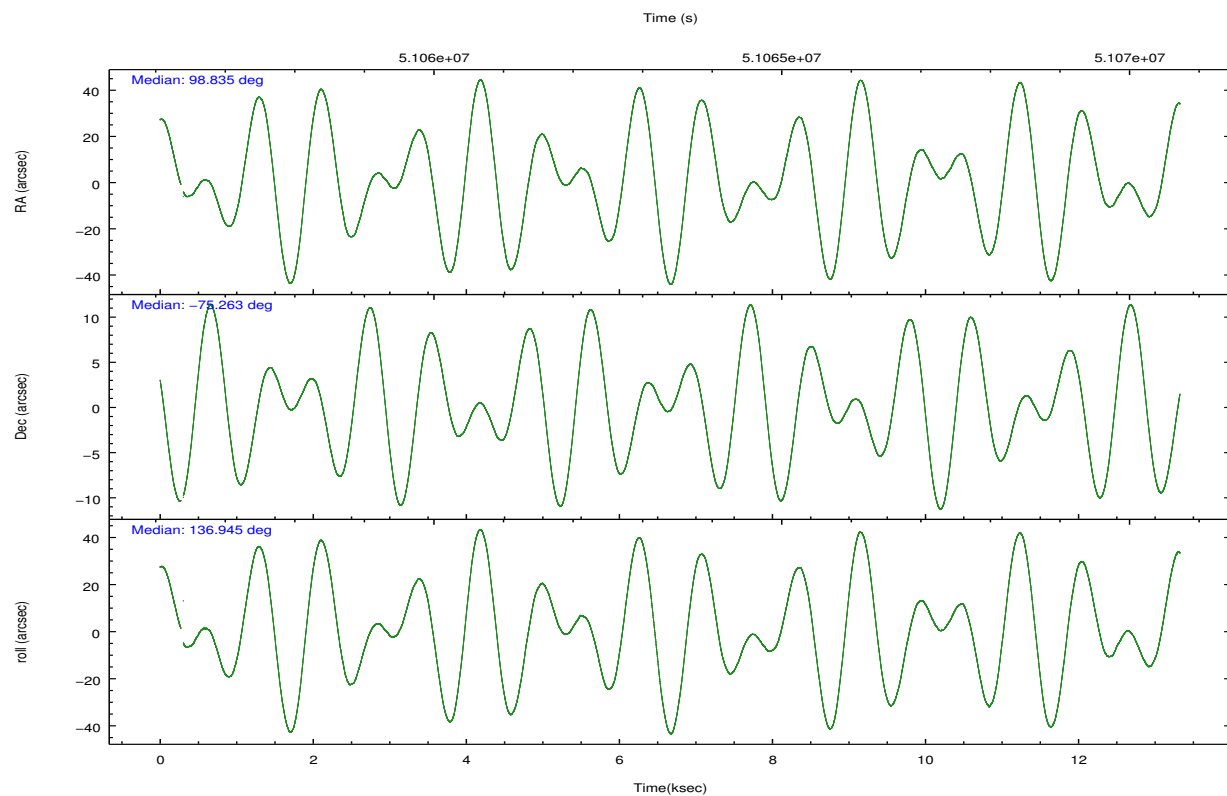
	ccd 2	ccd 3	ccd 5	ccd 6	ccd 7	ccd 8
grade 0 events	5226	5284	36845	5417	4776	8213
	18%	18%	24%	17%	4%	19%
grade 1 events	62	51	3298	68	171	85
	0%	0%	2%	0%	0%	0%
grade 2 events	4300	4136	20418	4366	10676	7762
	15%	14%	13%	13%	10%	18%
grade 3 events	1921	1902	6257	2107	6619	2918
	6%	6%	4%	6%	6%	6%
grade 4 events	1764	1847	5496	1924	5346	2748
	6%	6%	3%	6%	5%	6%
grade 5 events	7547	7811	10735	9285	15766	9370
	26%	27%	7%	29%	15%	22%
grade 6 events	7260	7181	66002	8366	61728	10846
	25%	25%	44%	26%	58%	25%
grade 7 events	0	0	0	1	0	0
	0%	0%	0%	0%	0%	0%

2.2 Compared Parameters

Parameter	Planned	Actual	Parameter	Planned	Actual
Instrument	ACIS	ACIS	Obspar format version number	6	6
Detector	ACIS-235678	ACIS-235678	Obspar file type	PREDICTED	ACTUAL
Grating	NONE	NONE	Obspar update status	NONE	UPDATED
Observation mode	POINTING	POINTING	Number of optional ACIS chips dropped	0	0
Pointing RA	98.939974	98.83461197423595	On-chip summing requested	N	N
Pointing Dec	-75.270008	-75.26331036794059	Subarray requested	NONE	NONE
Pointing Roll	136.588386	136.9495634836138	Alternating exposures requested	N	N
SIM focus pos (mm)	-1.384267	-0.440476280410583	Primary exposure time	0.000000	3.2
SIM defocus (mm)	-0.7	0.2437911808893133			
SIM translation stage pos (mm)	-190.132523	-190.1325231039672			
SIM translation stage offset (mm)	0	5.209593894051068e-07			
Observation start time	51052424.184000	51056730.73837			
Observation start date	1999-08-14T21:12:40	1999-08-14T22:25:30			
Observation end time	51057424.184000	51070338.63885			
Observation end date	1999-08-14T22:36:00	1999-08-15T02:12:18			
Read mode	TIMED	TIMED			

2.3 Aspect



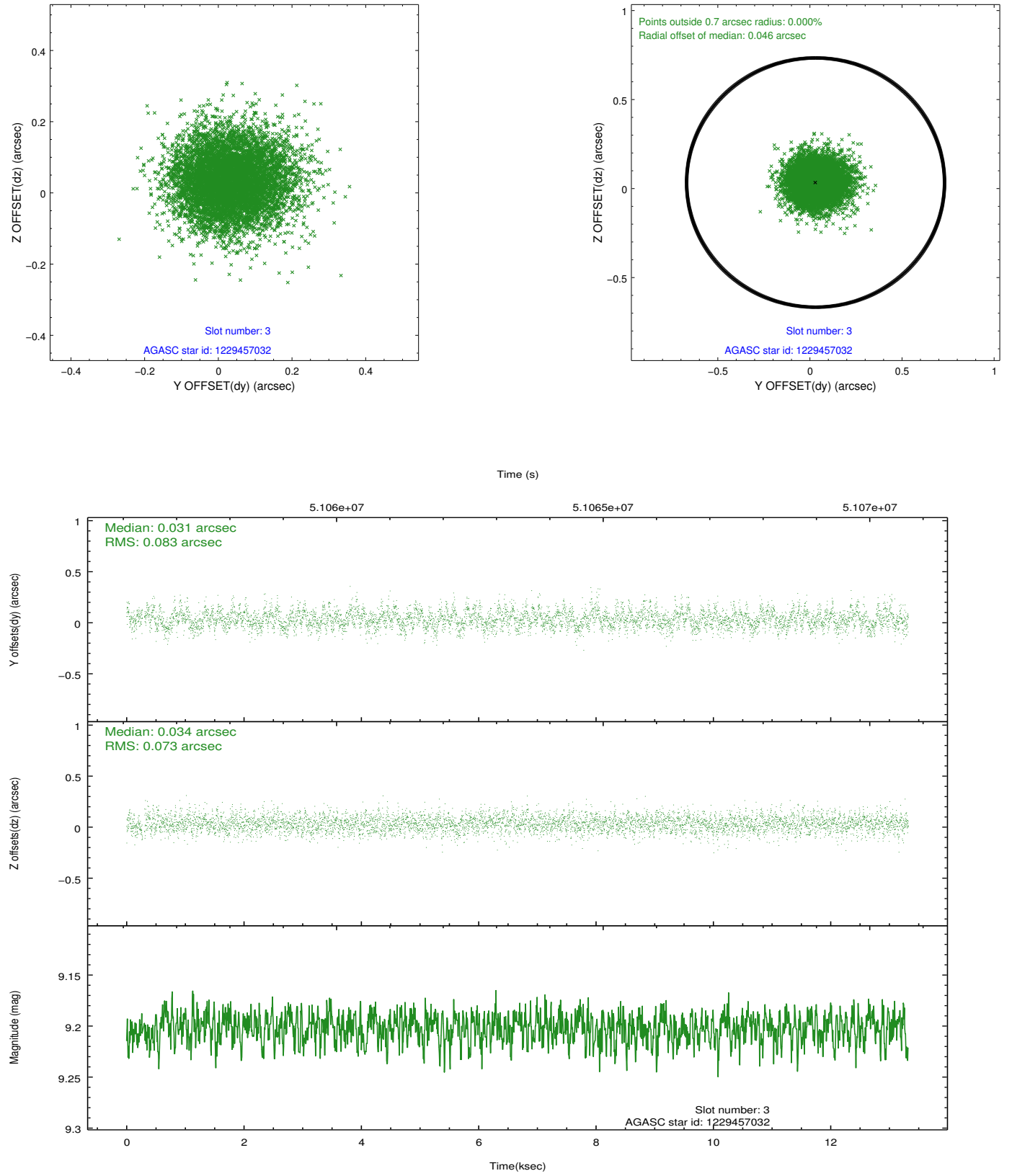


Slot Statistics

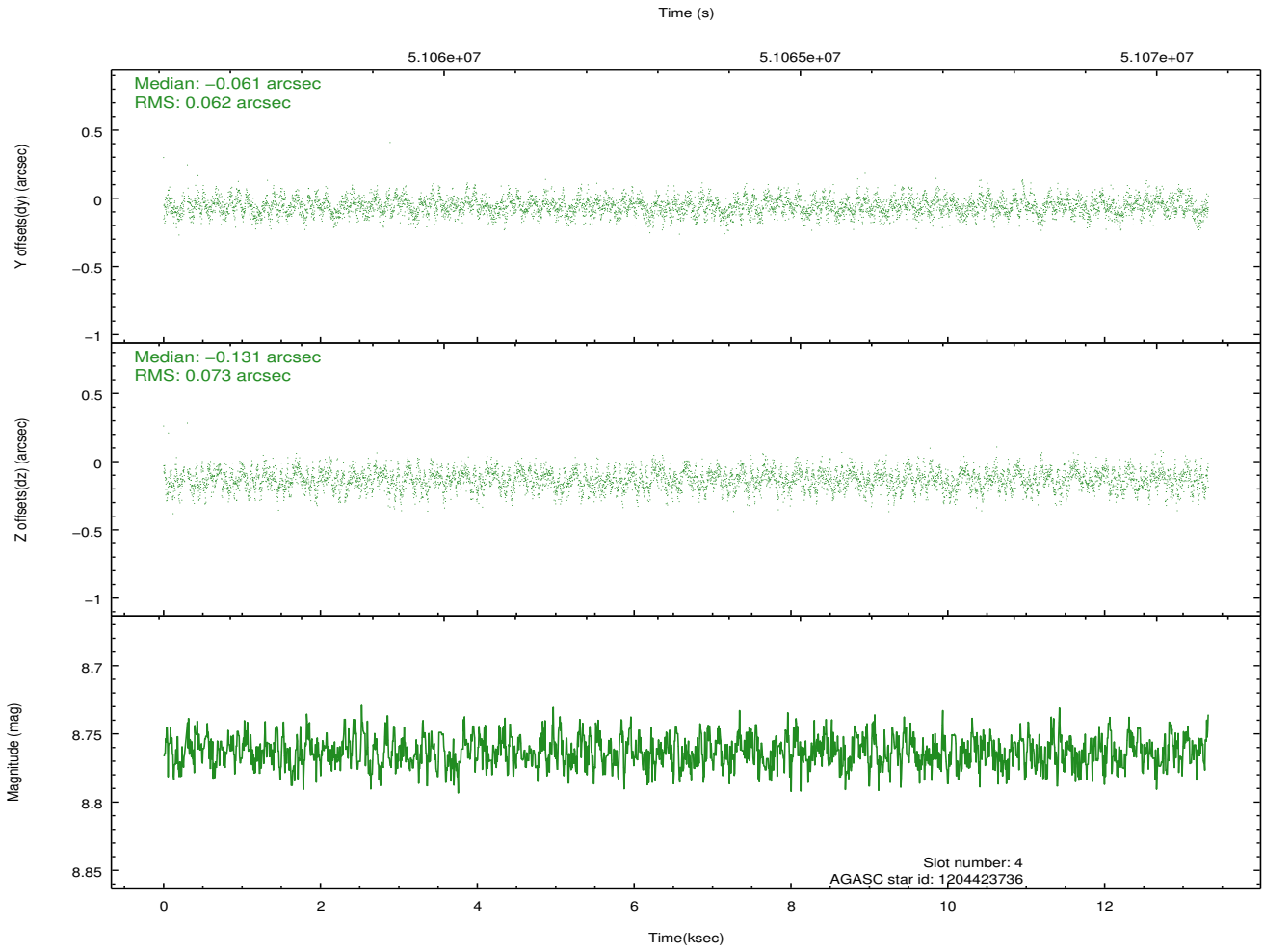
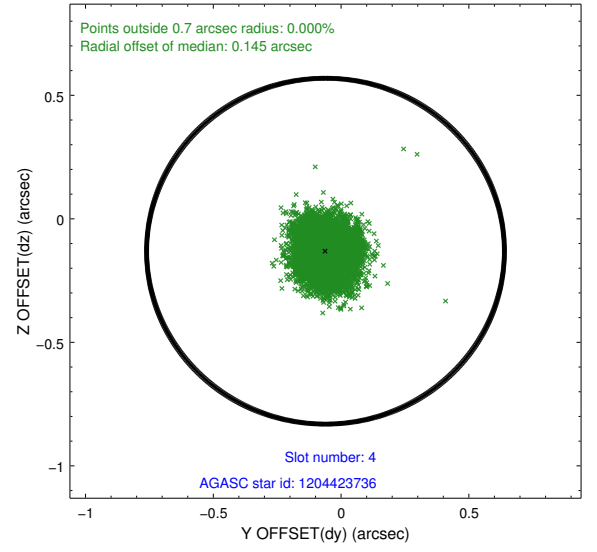
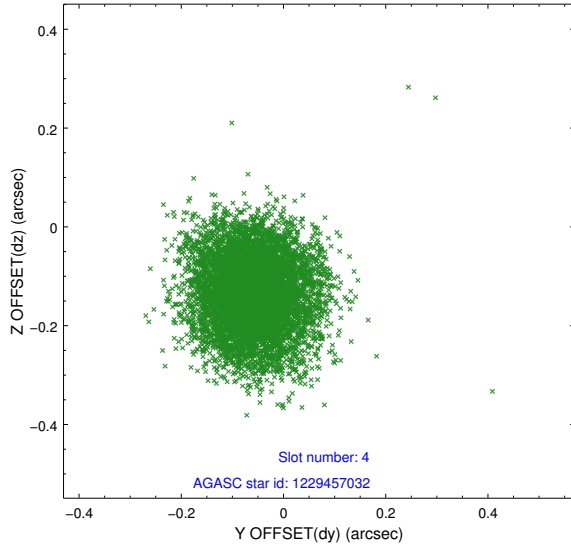
slot	status	id	mag	n_pts	med_dy	med_dz	dr1	dr2	ra	dec	mean_y	mean_z
0	UNUSED		0.00	0	0.000	0.000	0.000	0.000	0.000000	0.000000	0.00	0.00
1	UNUSED		0.00	0	0.000	0.000	0.000	0.000	0.000000	0.000000	0.00	0.00
2	FID	ACIS-S-6	7.37	6484	-0.021	-0.026	0.000	0.000	0.000000	0.000000	409.29	824.85
3	GUIDE	1229457032	9.20	6480	0.031	0.034	0.117	0.190	100.958417	-75.581890	-2108.39	-393.55
4	GUIDE	1204423736	8.76	6480	-0.061	-0.131	0.102	0.162	99.272017	-74.796122	936.62	-1458.72
5	GUIDE	1229331616	9.91	6401	0.053	-0.149	0.157	0.253	96.182998	-75.347362	1602.83	1961.23
6	GUIDE	1204427552	9.96	6481	-0.066	0.330	0.166	0.272	98.426081	-74.700454	1756.95	-1160.58
7	GUIDE	1229333040	9.79	6385	0.040	-0.085	0.158	0.257	99.562583	-75.788185	-1677.73	988.16

2.4 Star Slots

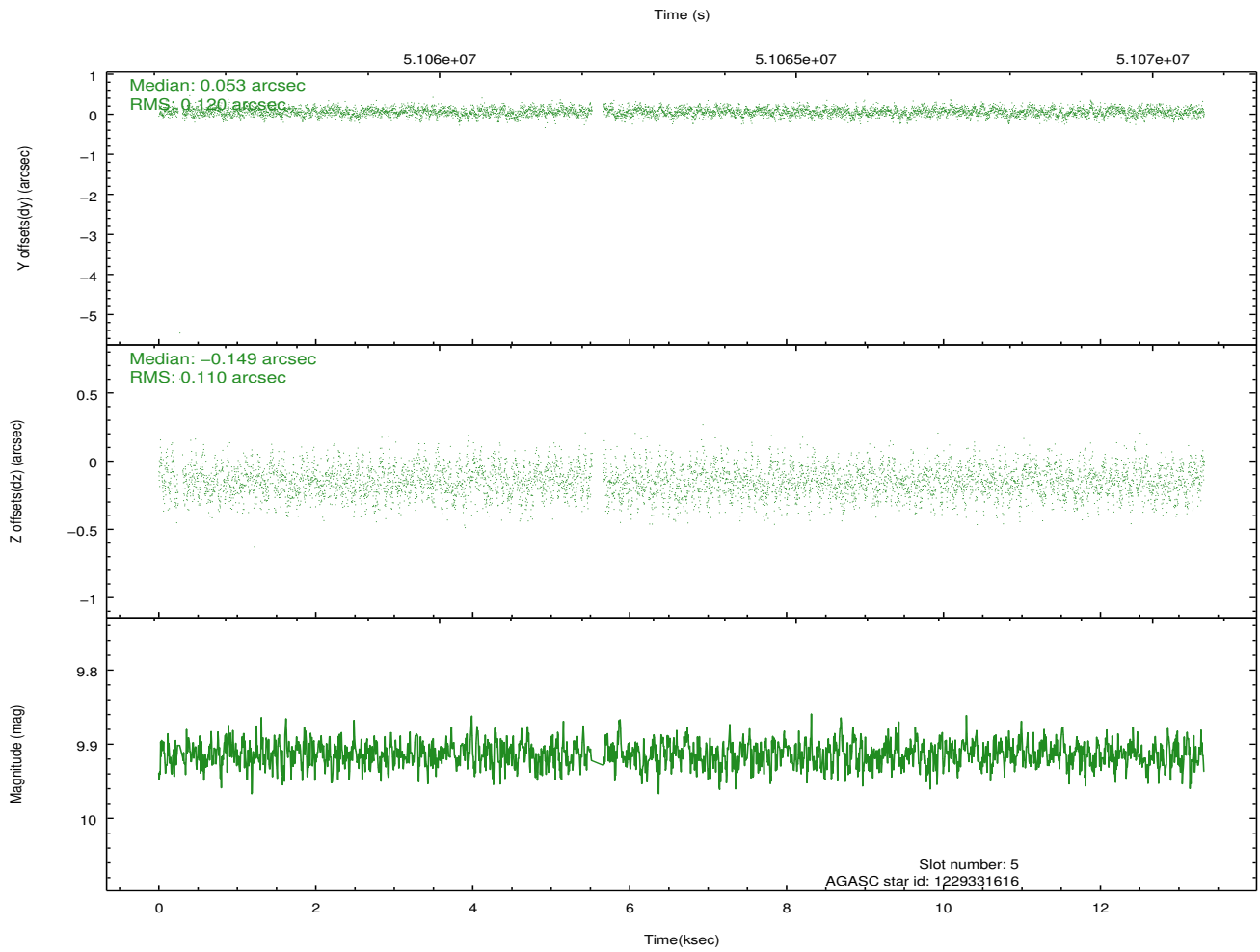
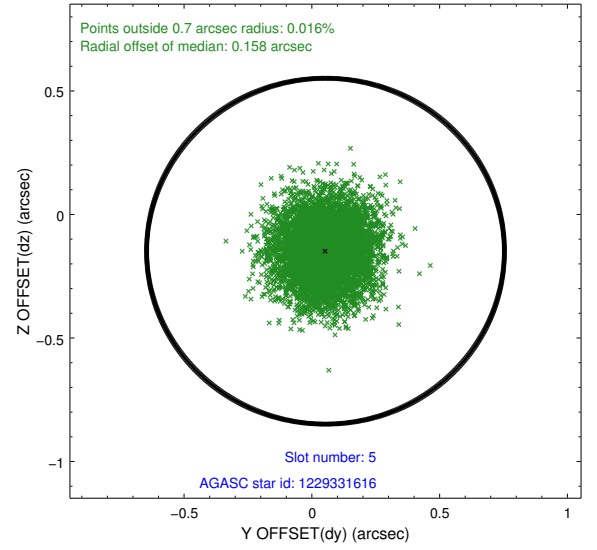
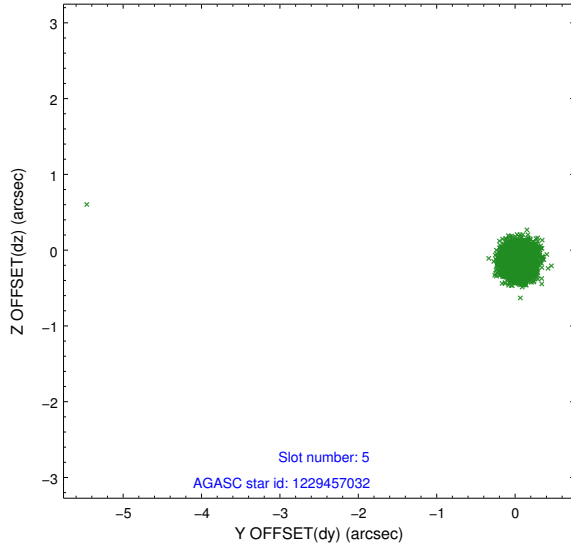
2.4.1 Slot 3



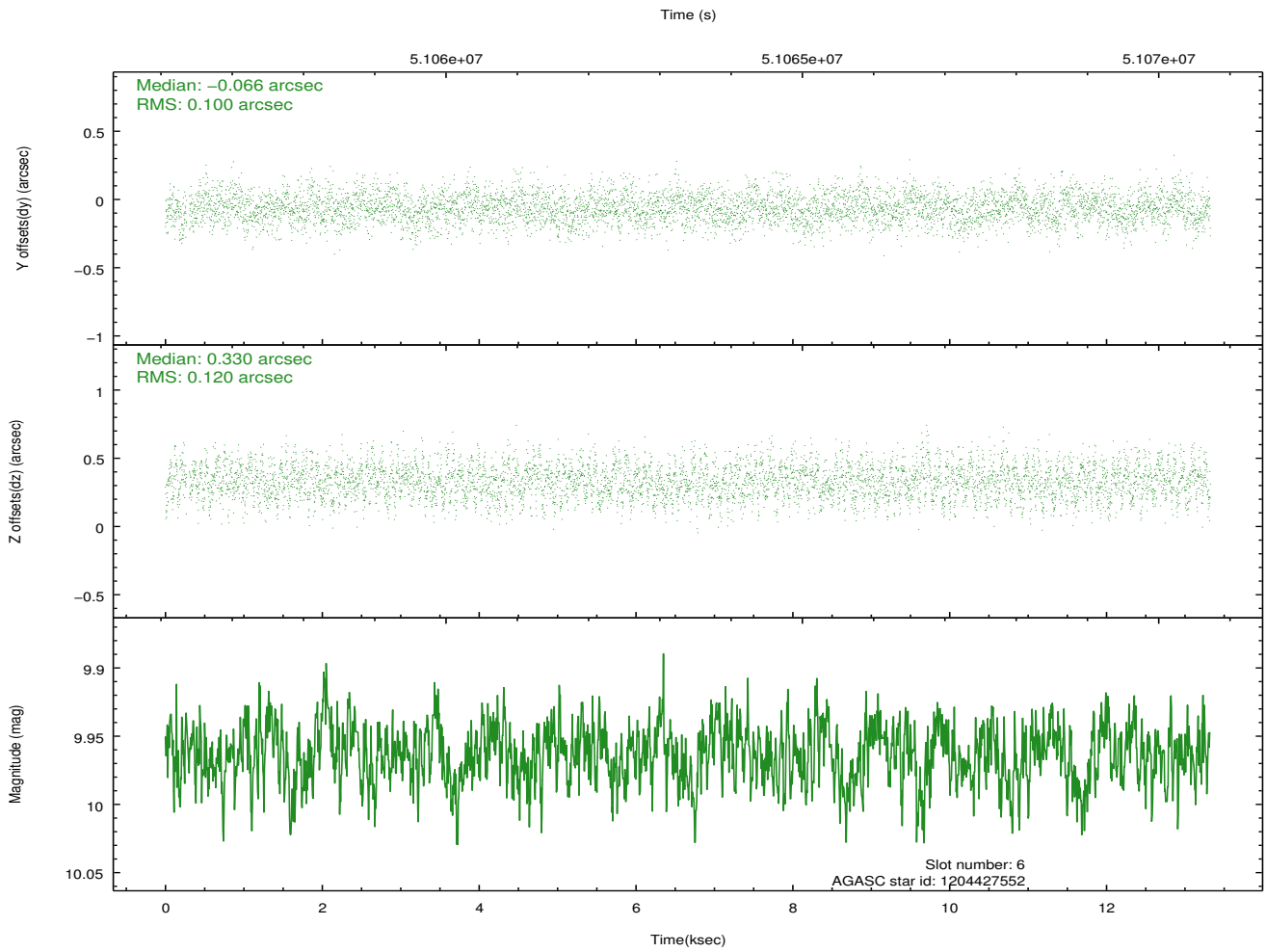
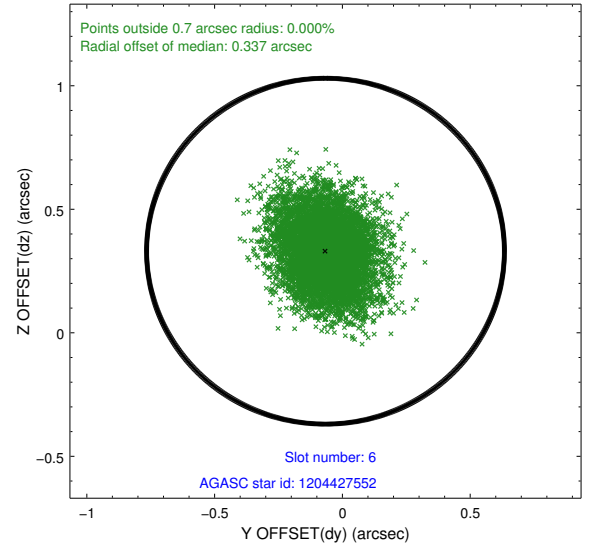
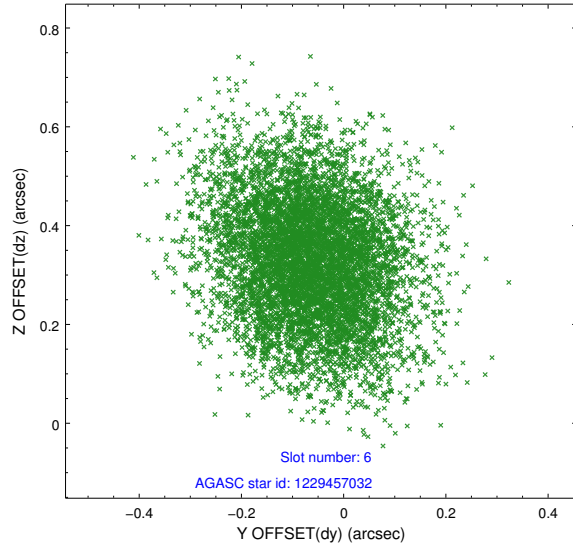
2.4.2 Slot 4



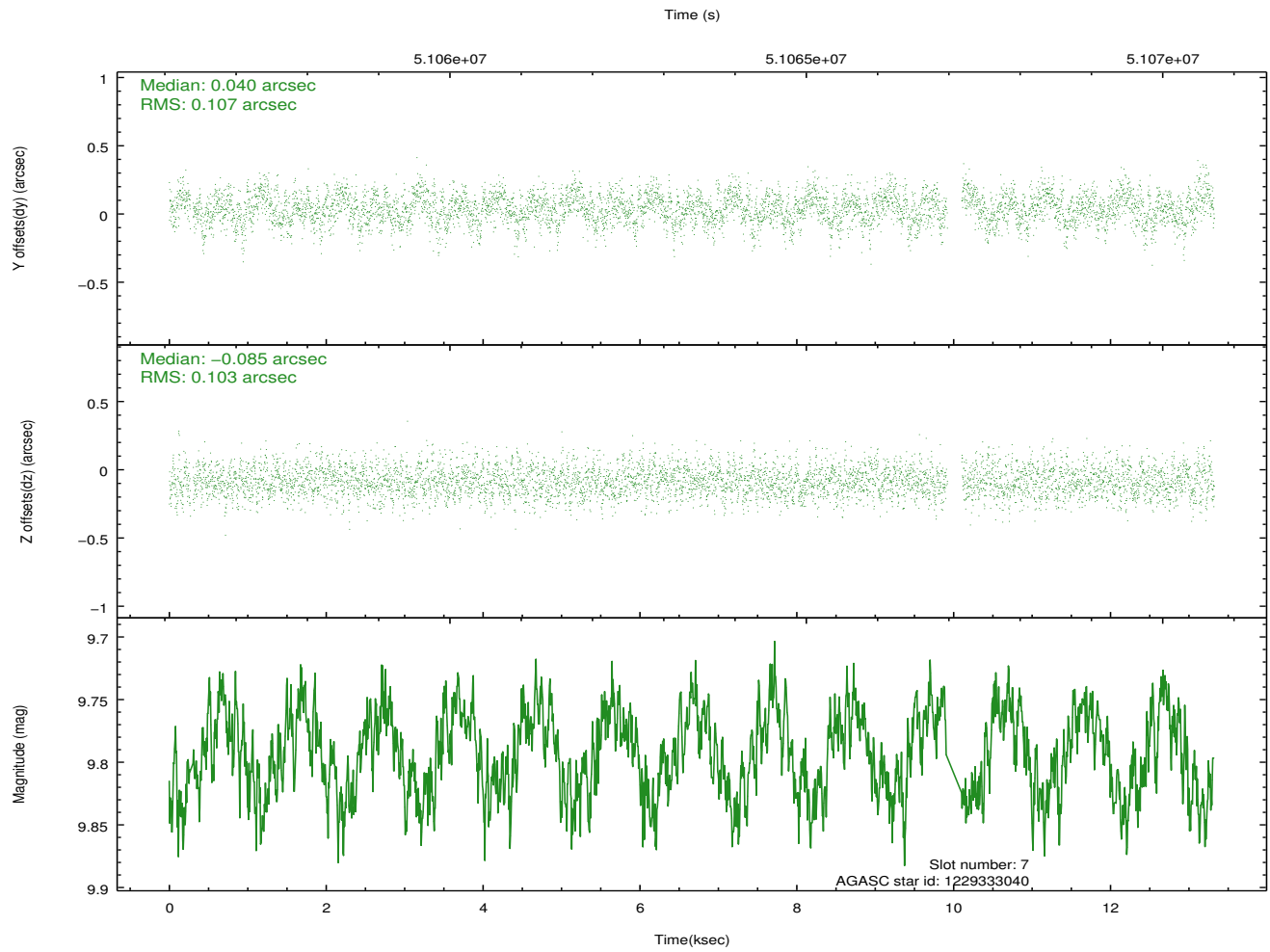
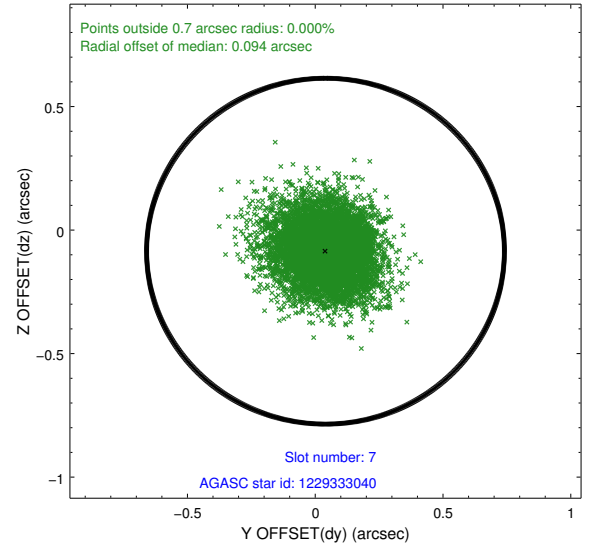
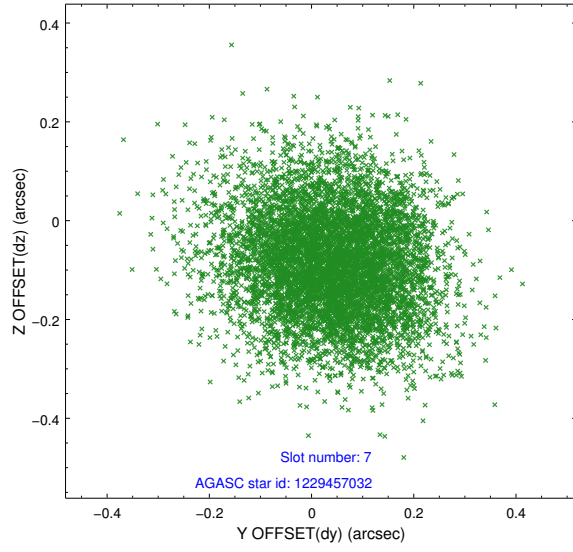
2.4.3 Slot 5



2.4.4 Slot 6

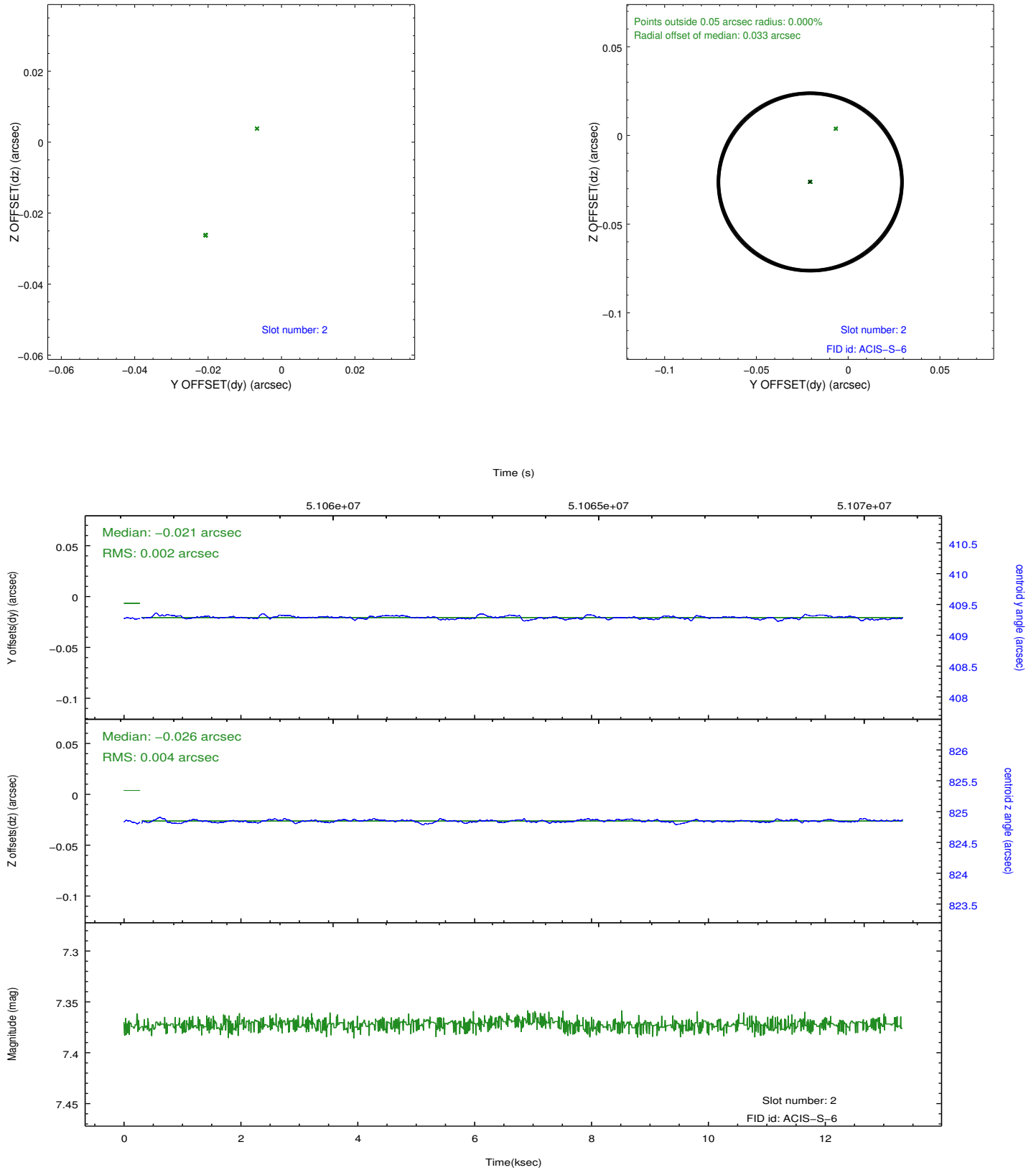


2.4.5 Slot 7

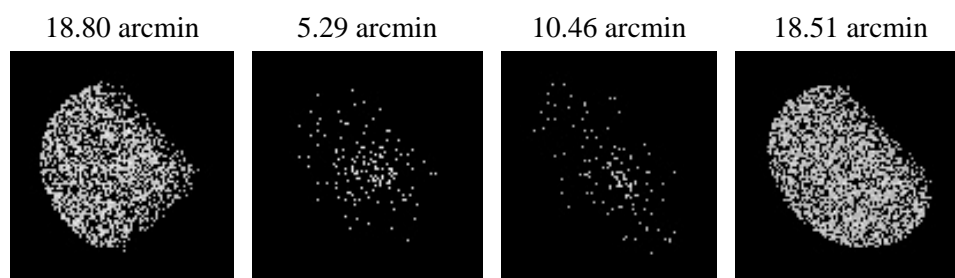


2.5 FID Slots

2.5.1 Slot 2



3 Point Sources



A Summary

A.1 Status

V&V Scientist	Joy Nichols
V&V Date (YYYY-MM-DD)	2010.08.16
V&V Edition	1
V&V Disposition and Status	OK
V&V Charge Time	11.366

A.2 Comments

ACIS focus and plate scale test. Moved ISIM FOCUS to -0.700mm at 226:2229 (-30 steps to -300 steps). Only 1 of 3 fid lights was acquired for this observation due to operational issues.

===

The guide stars in slots 4 and 6 were not acquired for this observation.

===

The focal plane temperature is approximately -100 C during this observation. This reprocessing of the data applies no CTI correction because none is available for this temperature at present.

The ACIS CTI correction has not been calibrated at this temperature, because it was early in the mission, and ACIS had not yet been lowered to the standard -119.7 C. Both front and back illuminated chips are affected. However a T_GAIN correction has been applied to the BI chips (ACIS-5 and ACIS-7) data included here.

The ACIS spectral response calibration is less accurate at these warmer temperatures than it is at -119.7 C. Users whose science objectives depend on the most accurate spectral response (ie: fitting line-rich spectra) may notice an effect. Users whose science objectives do not depend on the most accurate spectral response should not notice an effect.