

V&V Reference Report

L2 ASCDS Version : 8.5.1

Observation 6224 - L2 Version 3
Chandra X-Ray Center

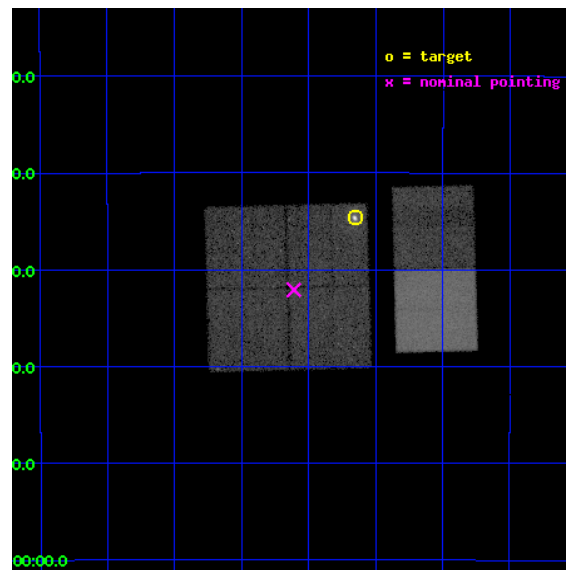
L2 Processing Date : Dec 17 2012

Contents

1	Front	2
2	OBI	3
2.1	OBI	3
2.1.1	Images	3
2.1.2	Bias	3
2.1.3	Parameters	4
2.1.4	Events	4
2.2	Compared Parameters	5
2.3	Aspect	6
2.4	Star Slots	9
2.4.1	Slot 3	9
2.4.2	Slot 4	10
2.4.3	Slot 5	11
2.4.4	Slot 6	12
2.4.5	Slot 7	13
2.5	FID Slots	14
2.5.1	Slot 0	14
2.5.2	Slot 1	15
2.5.3	Slot 2	16
A	Summary	17
A.1	Status	17
A.2	Comments	17

1 Front

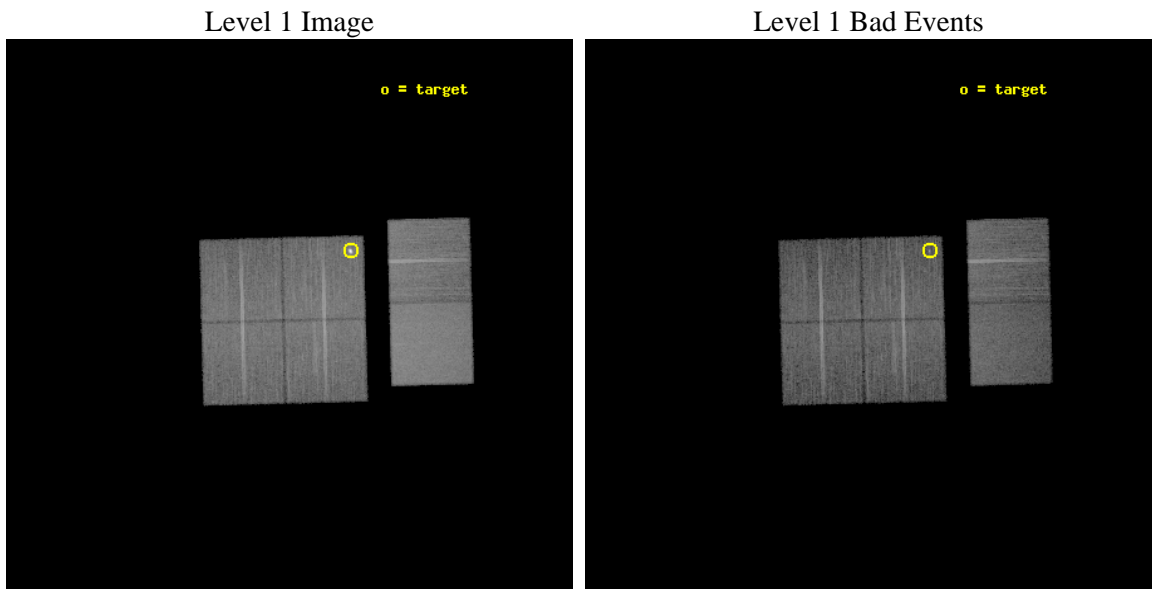
seq_num	500598	Sequence number
obs_id	6224	Observation id
title	The X-ray Fluence of the SGR 1806-20 Hyperflare	Proposal title
observer	Prof. Derek Fox	Principal investigator
object	SGR 1806-20	Source name
dtcycle	0	
cycle	P	events from which exps? Prim/Second/Both
ra_targ	272.16375	Observer's specified target RA [deg]
dec_targ	-20.410833	Observer's specified target Dec [deg]
ra_nom	272.27745863338	Nominal RA [deg]
dec_nom	-20.534757419128	Nominal Dec [deg]
roll_nom	88.545277279878	Nominal Roll [deg]
revision	3	Processing version of data
ontime	19059.199928999	Sum of GTIs [s]
livetime	18817.860863426	Livetime [s]
ontime0	19059.199928999	Sum of GTIs [s]
ontime1	19059.199928999	Sum of GTIs [s]
ontime2	19059.199928999	Sum of GTIs [s]
ontime3	19059.199928999	Sum of GTIs [s]
ontime6	19059.199928999	Sum of GTIs [s]
ontime7	19059.199928999	Sum of GTIs [s]
l2events	176900	Number of level 2 events



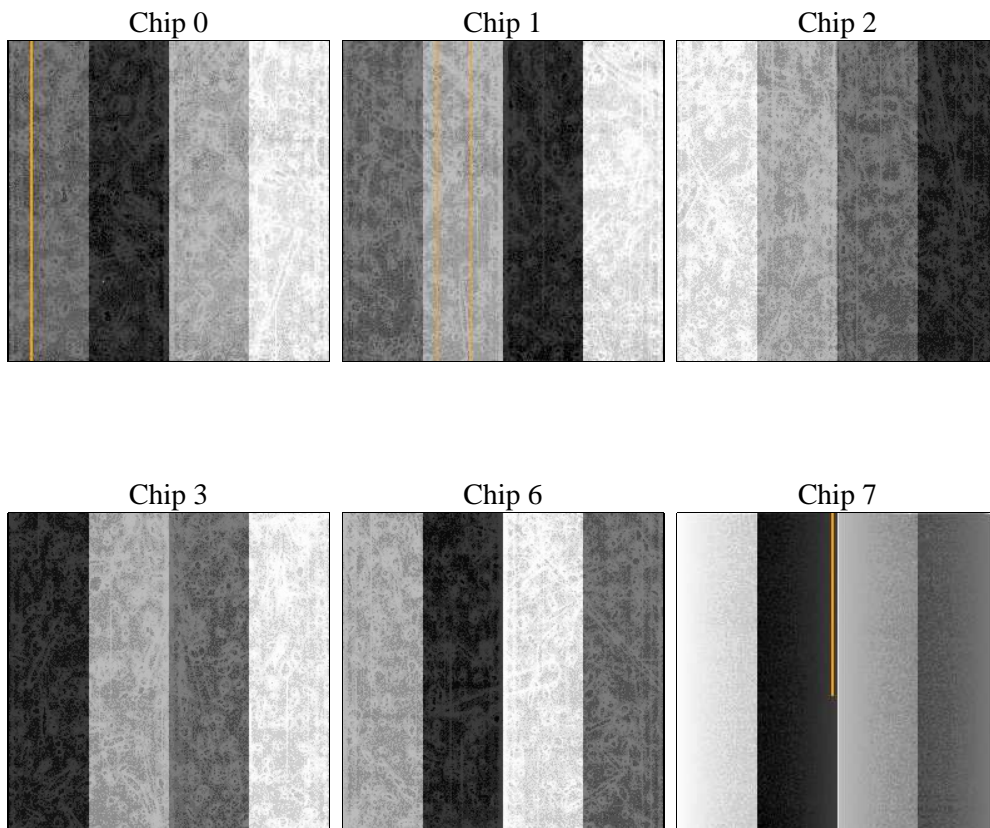
2 OBI

2.1 OBI

2.1.1 Images



2.1.2 Bias



2.1.3 Parameters

obi_num	0	Obi number	sched_exp_time	19103.333000	[s] Scheduled observation exposure time
ascdsver	8.5.1	Processing system revision	ontime	19059.199928999	Sum of GTIs [s]
caldsver	4.5.5	 	ontime0	19059.199928999	Sum of GTIs [s]
date	2012-12-17T04:58:22	Date and time of file creation	ontime1	19059.199928999	Sum of GTIs [s]
revision	3	Processing version of data	ontime2	19059.199928999	Sum of GTIs [s]
			ontime3	19059.199928999	Sum of GTIs [s]
			ontime6	19059.199928999	Sum of GTIs [s]
			ontime7	19059.199928999	Sum of GTIs [s]
			l1events	878889	Number of level 1 events

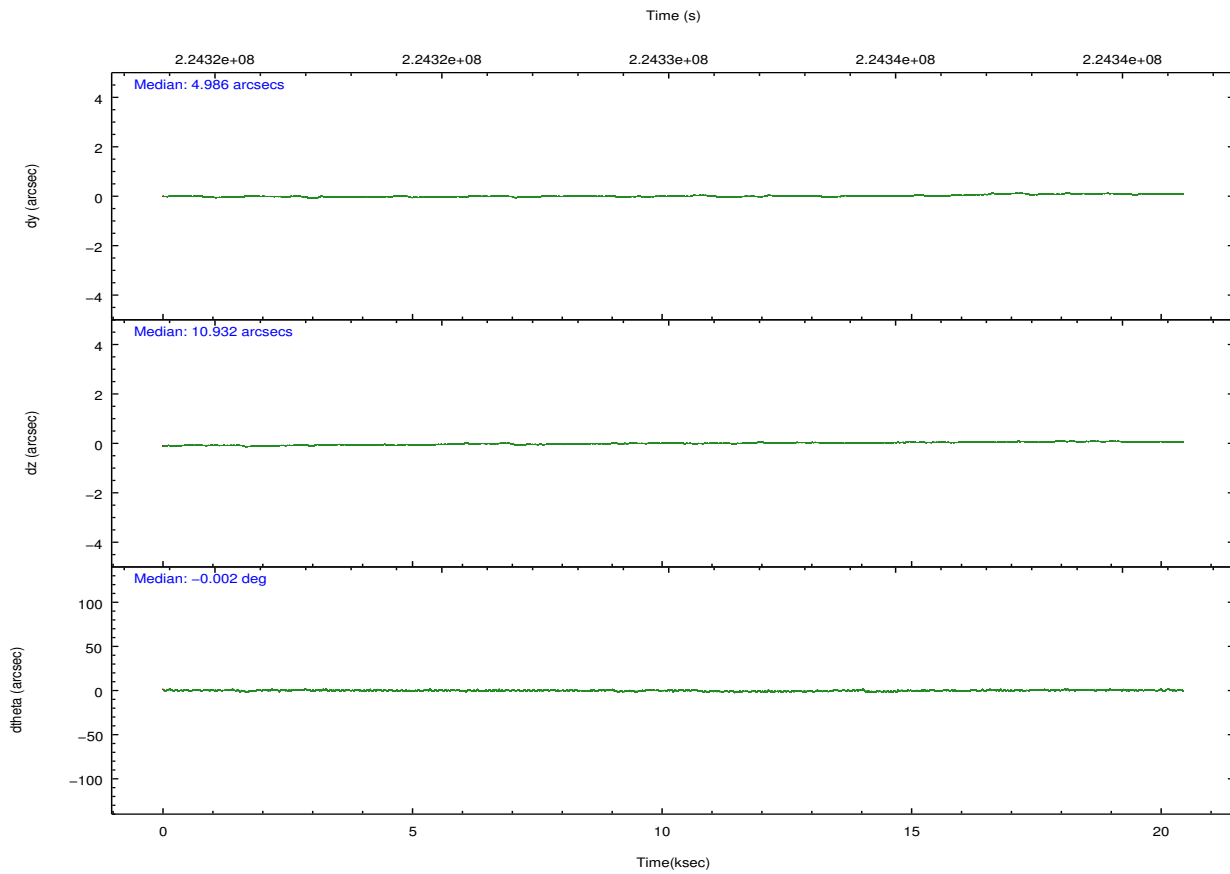
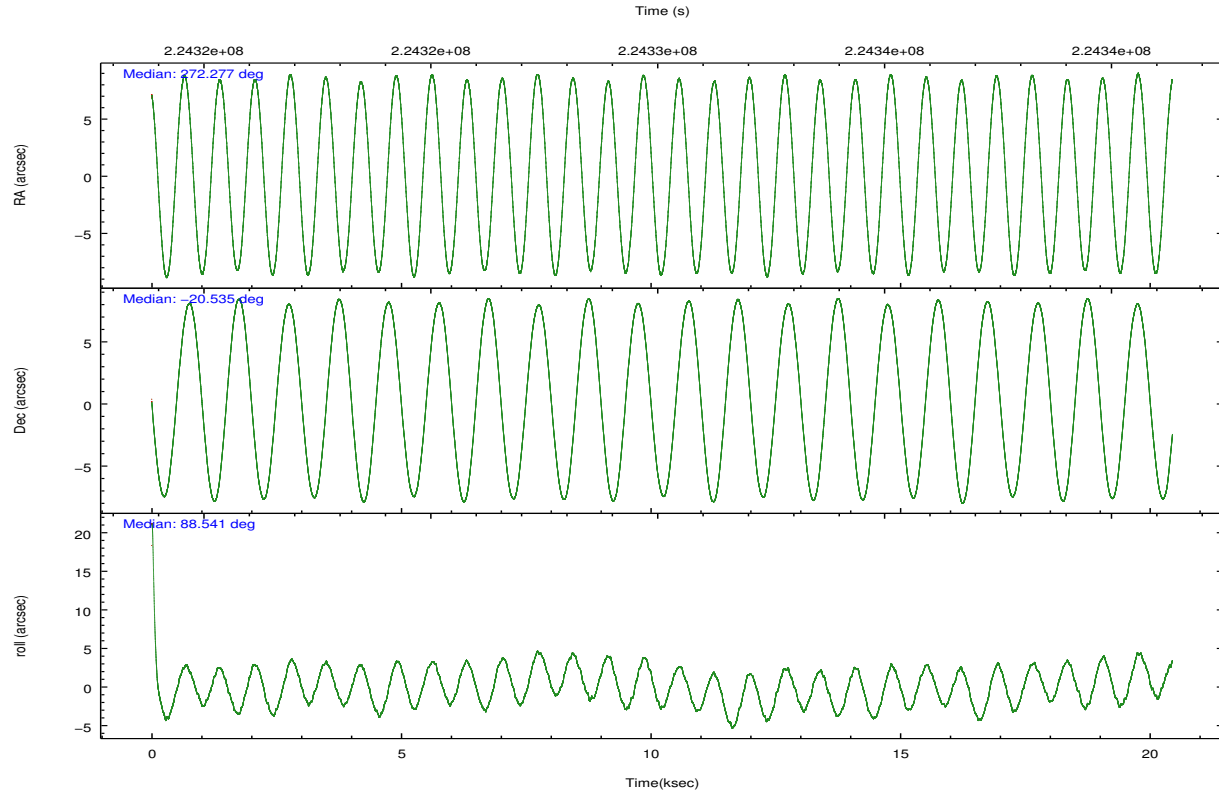
2.1.4 Events

	ccd 0	ccd 1	ccd 2	ccd 3	ccd 6	ccd 7		ccd 0	ccd 1	ccd 2	ccd 3	ccd 6	ccd 7
level 1 events	124213	126165	151663	134477	146591	195780	grade 0 events	8276	7957	17401	8902	8148	8068
rejected events	106117	107144	120448	116150	128046	109535		6%	6%	11%	6%	5%	4%
rejected %	85%	84%	79%	86%	87%	55%	grade 1 events	81	58	179	78	72	162
								0%	0%	0%	0%	0%	0%
							grade 2 events	3597	3969	5543	3399	3854	17354
								2%	3%	3%	2%	2%	8%
							grade 3 events	1753	1809	2229	1578	1599	7563
								1%	1%	1%	1%	1%	3%
							grade 4 events	1628	1824	2242	1684	1524	7368
								1%	1%	1%	1%	1%	3%
							grade 5 events	5389	5823	5451	6104	6676	17931
								4%	4%	3%	4%	4%	9%
							grade 6 events	2847	3470	3810	2769	3433	45932
								2%	2%	2%	2%	2%	23%
							grade 7 events	100642	101255	114808	109963	121285	91402
								81%	80%	75%	81%	82%	46%

2.2 Compared Parameters

Parameter	Planned	Actual	Parameter	Planned	Actual
Instrument	ACIS	ACIS	Obspar format version number	7	7
Detector	ACIS-012367	ACIS-012367	Obspar file type	PREDICTED	ACTUAL
Grating	NONE	NONE	Obspar update status	NONE	UPDATED
Data mode	FAINT	FAINT	Number of optional ACIS chips dropped	0	0
Observation mode	POINTING	POINTING	On-chip summing requested	N	N
[deg] Pointing RA	272.291538	272.2774586333821	Subarray requested	NONE	NONE
[deg] Pointing Dec	-20.558742	-20.53475741912841	Alternating exposures requested	N	N
[deg] Pointing Roll	88.341527	88.54527727987767	[s] Primary exposure time	0.000000	3.2
[mm] SIM focus pos	-0.782348	-0.7809083437167272			
[mm] SIM defocus	0	0.001439871863259334			
[mm] SIM translation stage pos	-233.592463	-233.5874344608287			
[mm] SIM translation stage offset	0	-0.005018542100998502			
[s] Observation start time (MET)	224321216.184000	224319669.95275			
Observation start date	2005-02-09T07:25:52	2005-02-09T07:01:09			
[s] Observation end time (MET)	224340319.184000	224340553.81619			
Observation end date	2005-02-09T12:44:15	2005-02-09T12:49:13			
Read mode	TIMED	TIMED			

2.3 Aspect

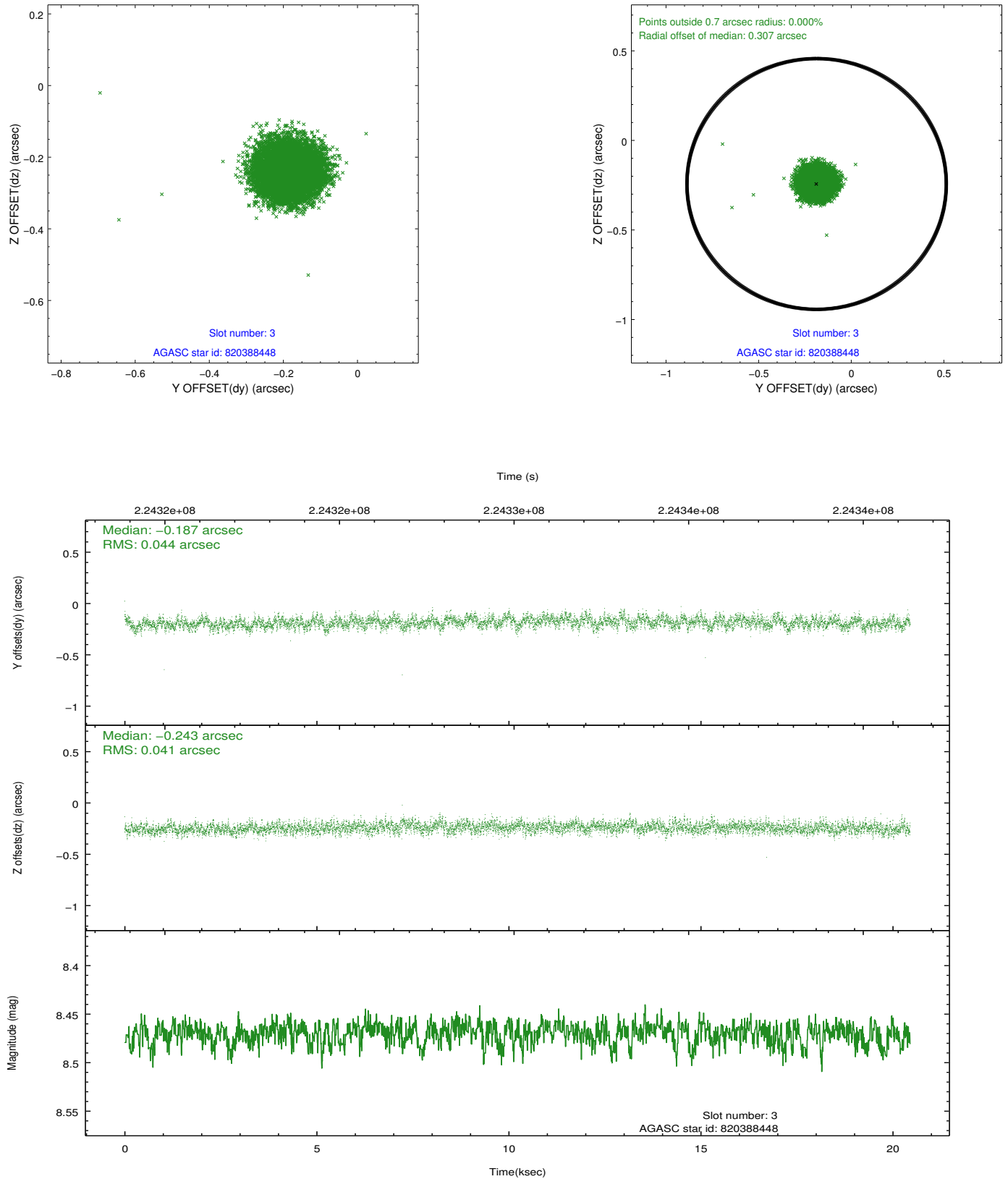


Slot Statistics

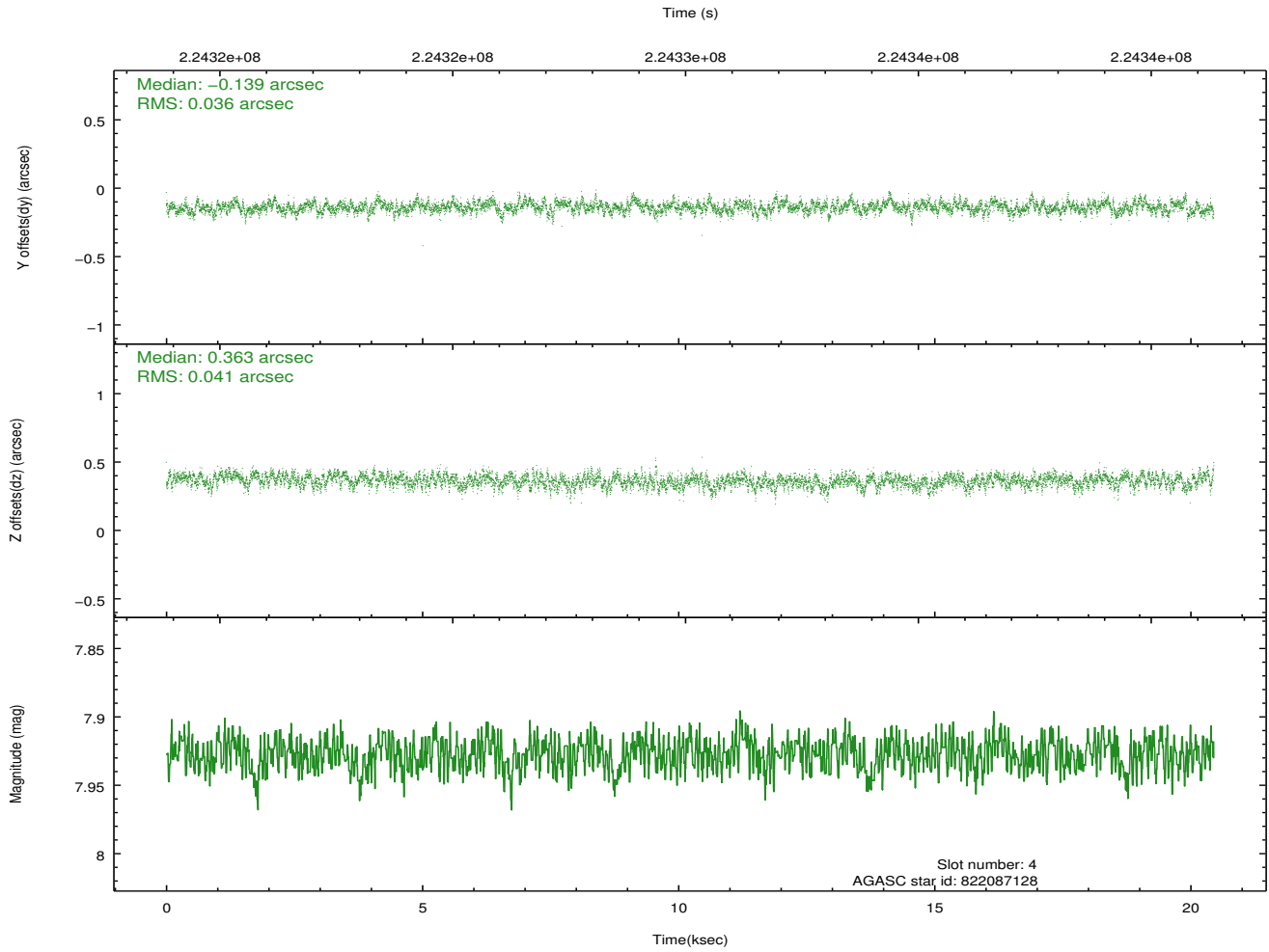
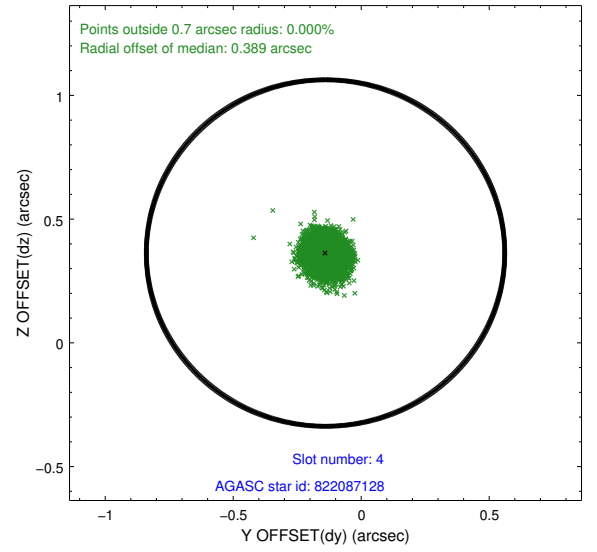
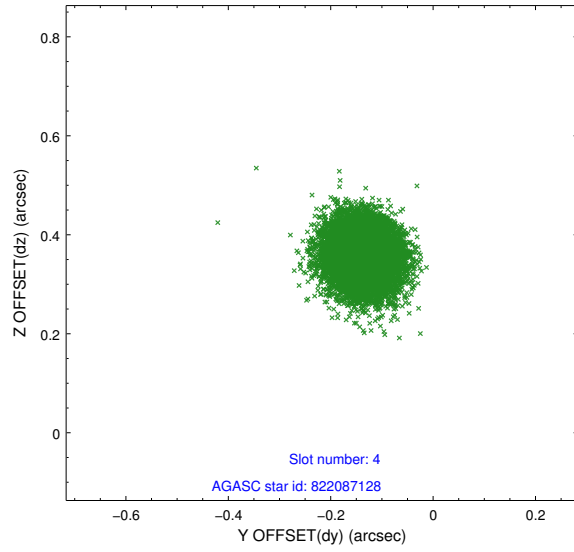
slot	status	id	mag	n_pts	med_dy	med_dz	dr1	dr2	ra	dec	mean_y	mean_z
0	FID	ACIS-I-1	7.24	4989	0.008	-0.064	0.014	0.027	0.000000	0.000000	934.75	-834.49
1	FID	ACIS-I-4	7.18	4986	0.066	0.064	0.013	0.021	0.000000	0.000000	2154.95	1065.36
2	FID	ACIS-I-5	7.22	4989	-0.173	0.071	0.013	0.021	0.000000	0.000000	-1813.20	1063.42
3	GUIDE	820388448	8.47	9973	-0.187	-0.243	0.064	0.102	271.630569	-19.882892	2362.77	2307.23
4	GUIDE	822087128	7.93	9976	-0.139	0.363	0.058	0.093	272.956072	-20.371006	736.46	-2221.55
5	GUIDE	822101160	8.45	9974	-0.205	-0.111	0.056	0.091	272.245889	-20.018987	1937.91	210.55
6	GUIDE	820924984	7.47	9977	0.186	-0.220	0.064	0.109	271.834191	-21.201622	-2359.53	1467.17
7	GUIDE	822623312	8.99	9967	0.348	0.212	0.069	0.112	272.792493	-21.221864	-2339.76	-1749.40

2.4 Star Slots

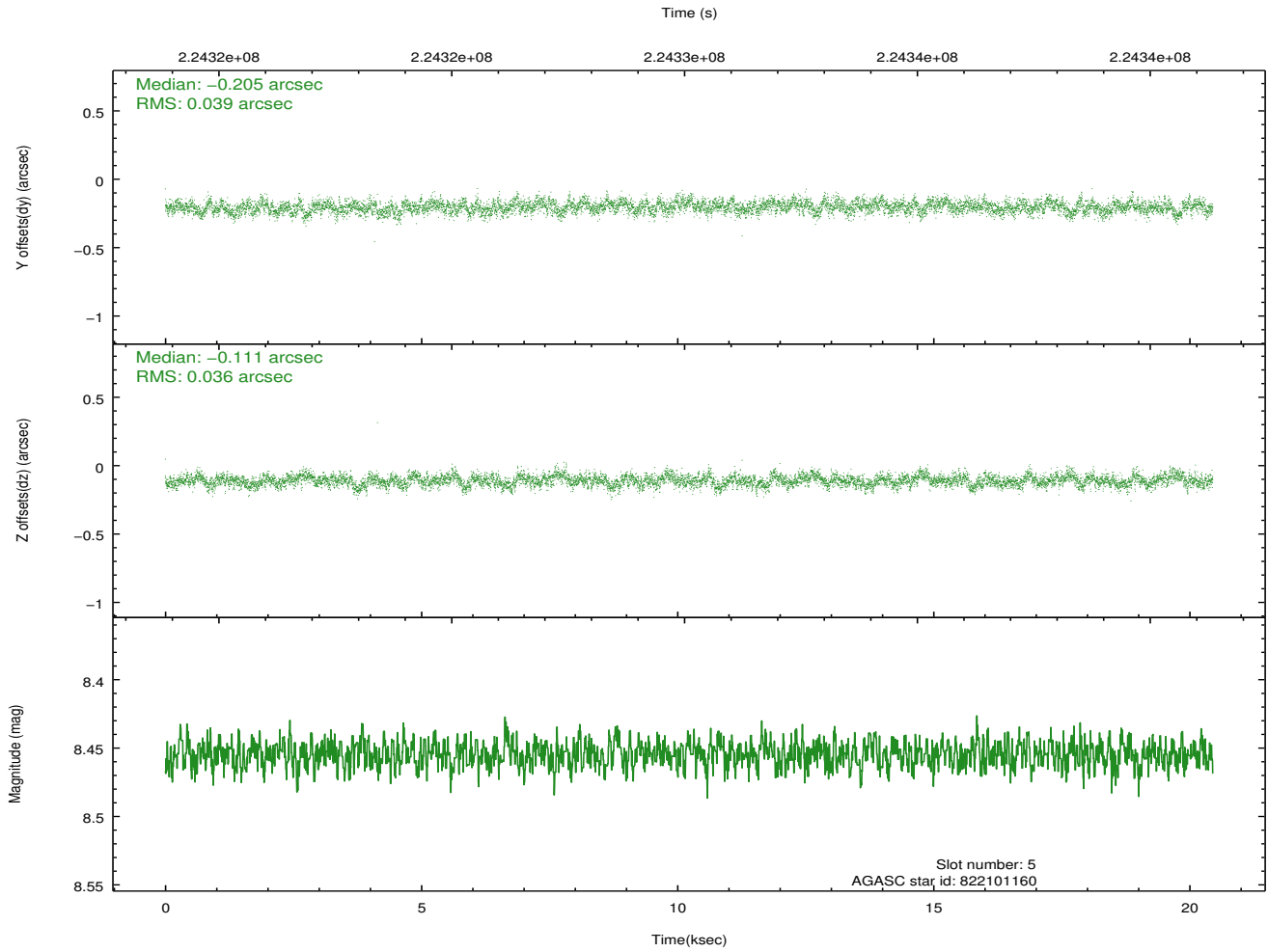
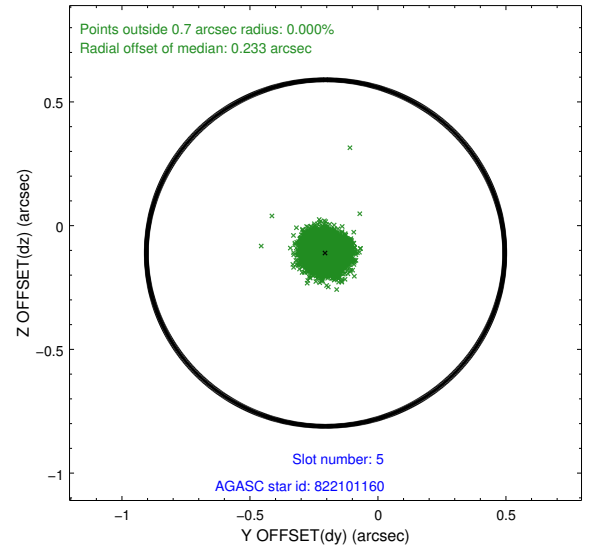
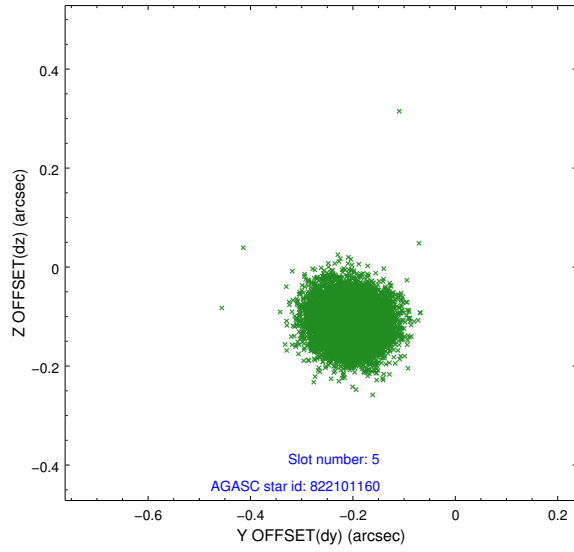
2.4.1 Slot 3



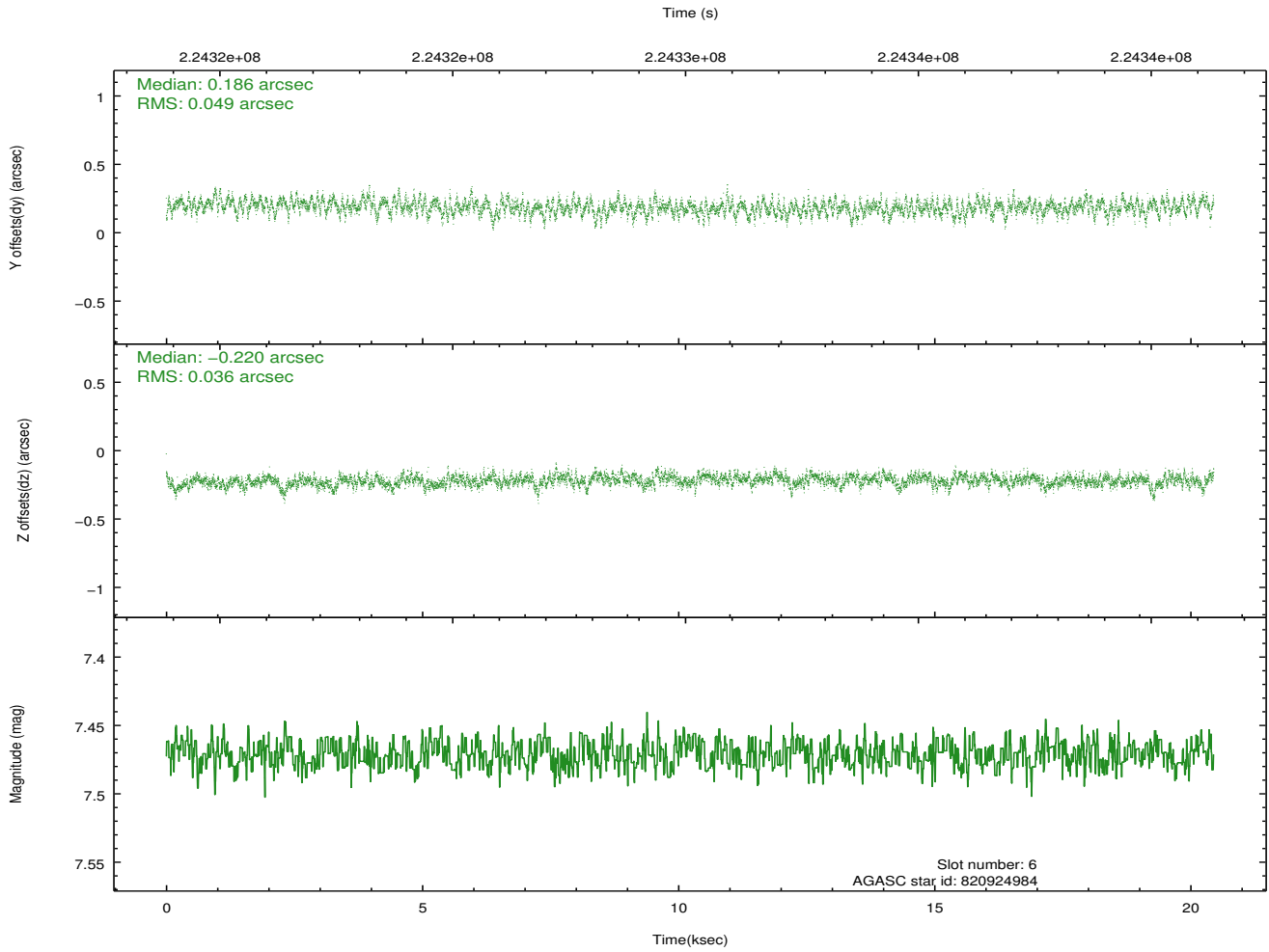
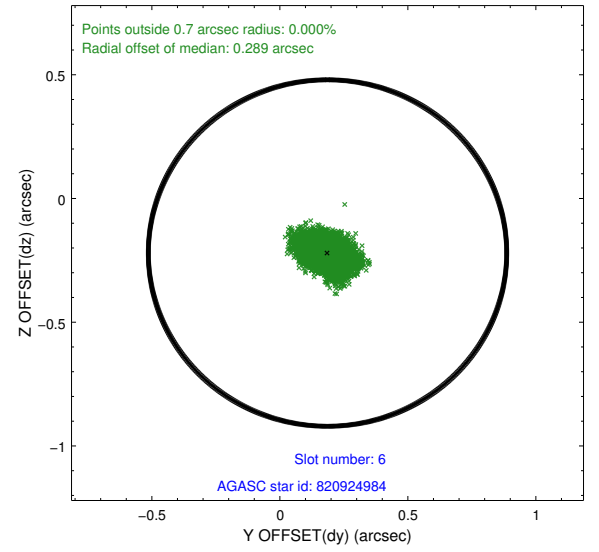
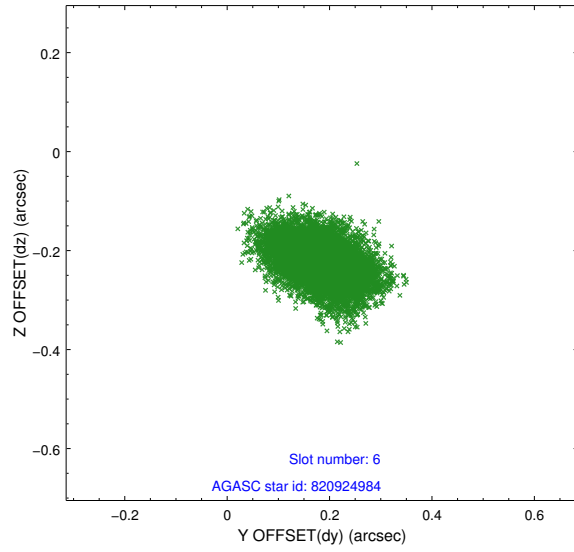
2.4.2 Slot 4



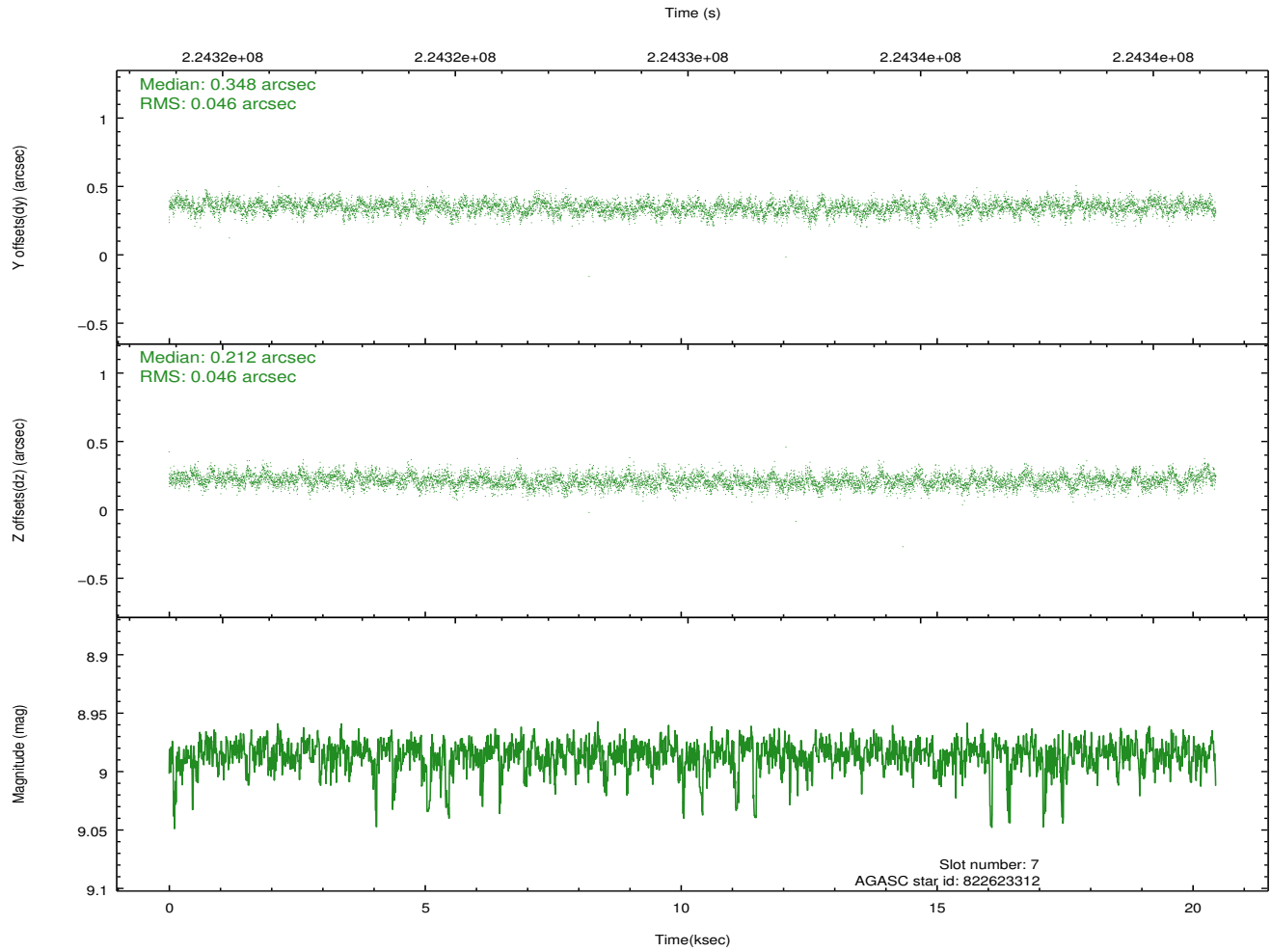
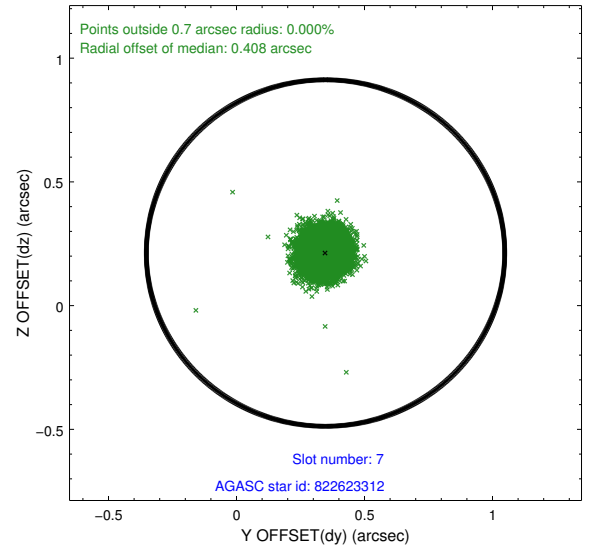
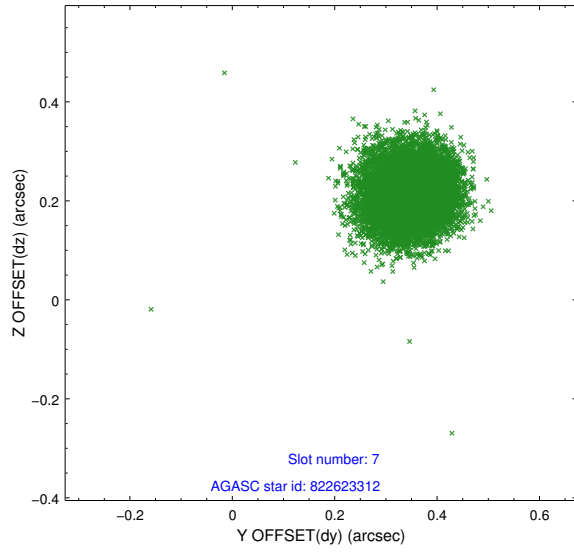
2.4.3 Slot 5



2.4.4 Slot 6

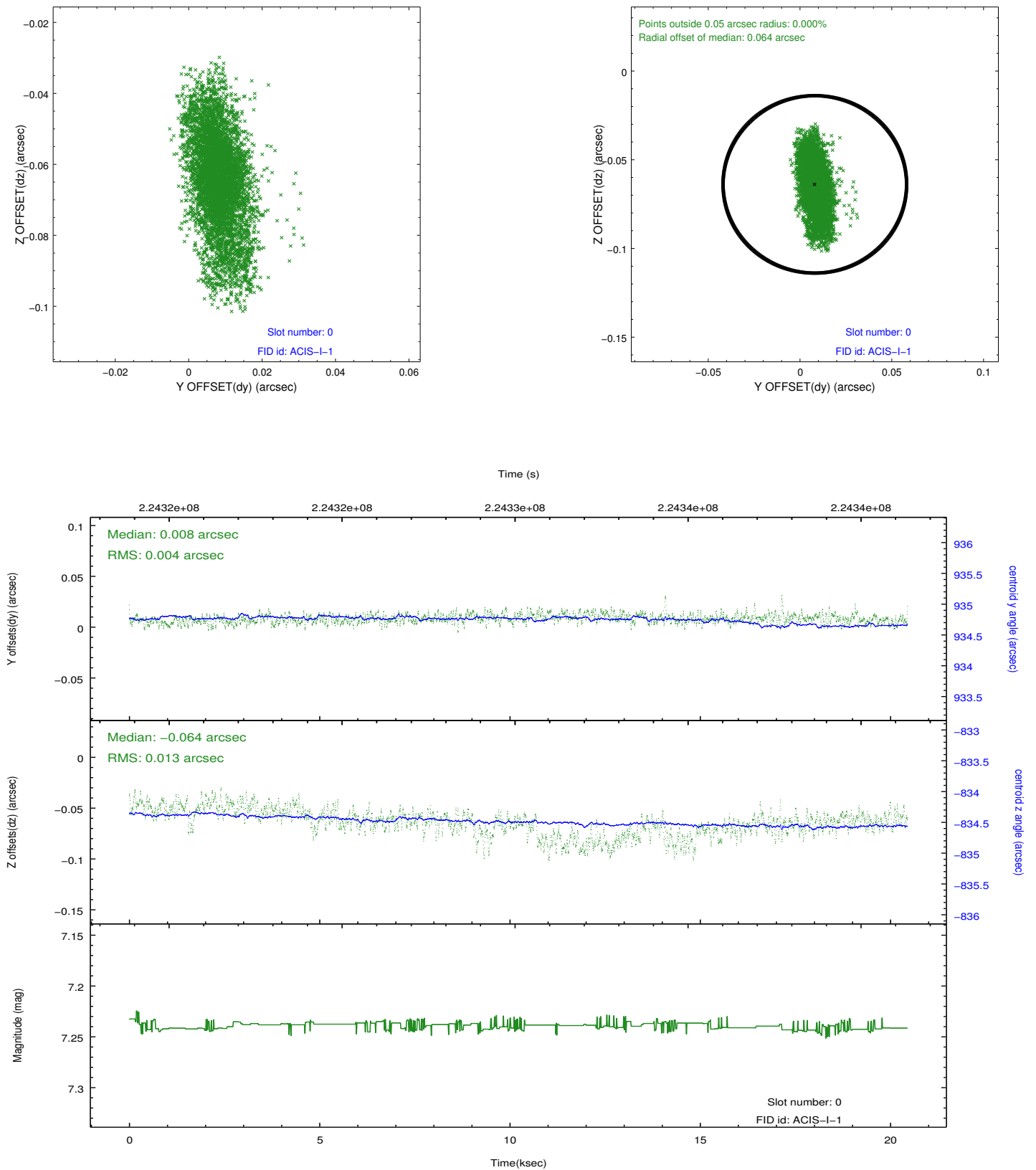


2.4.5 Slot 7

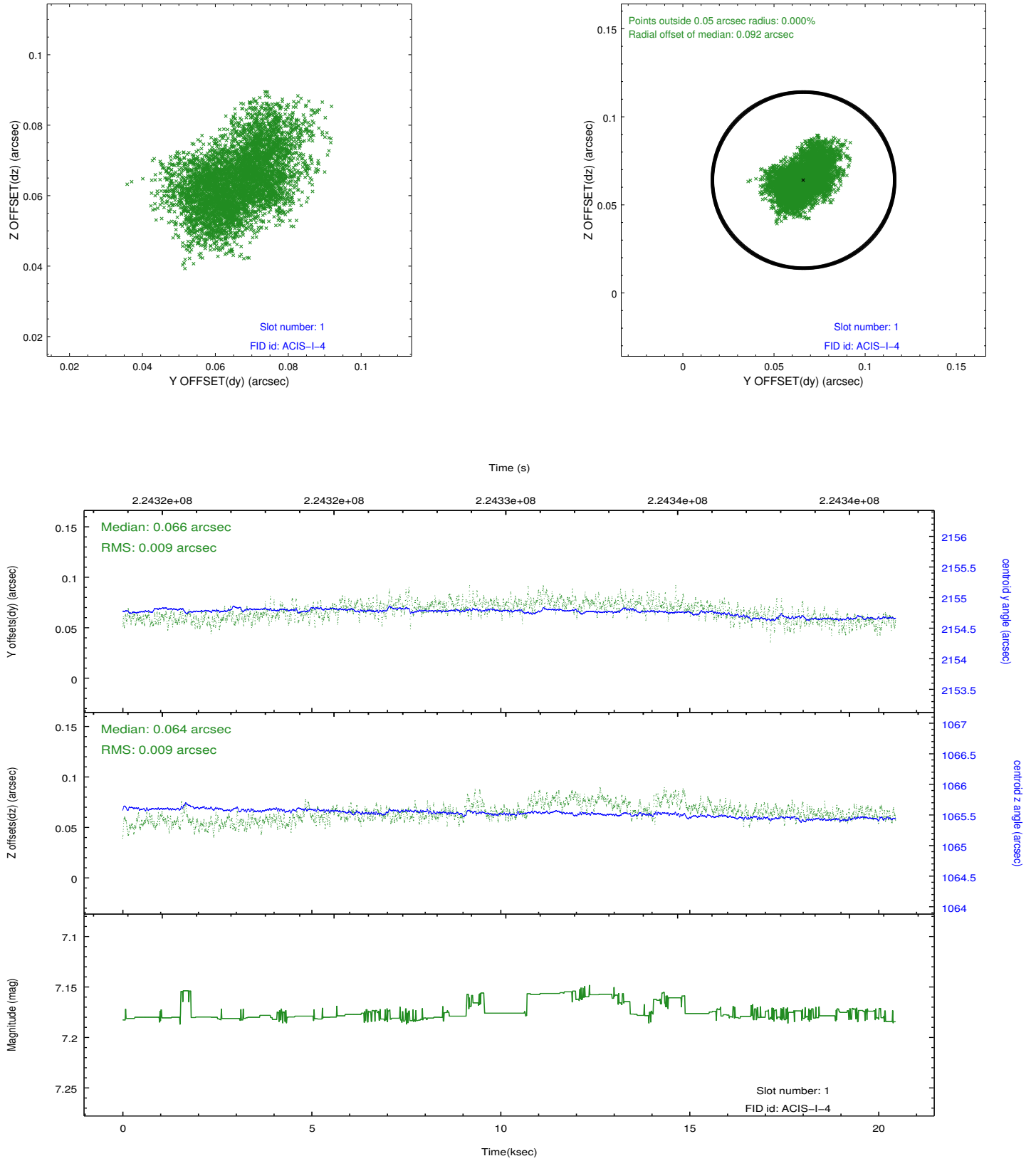


2.5 FID Slots

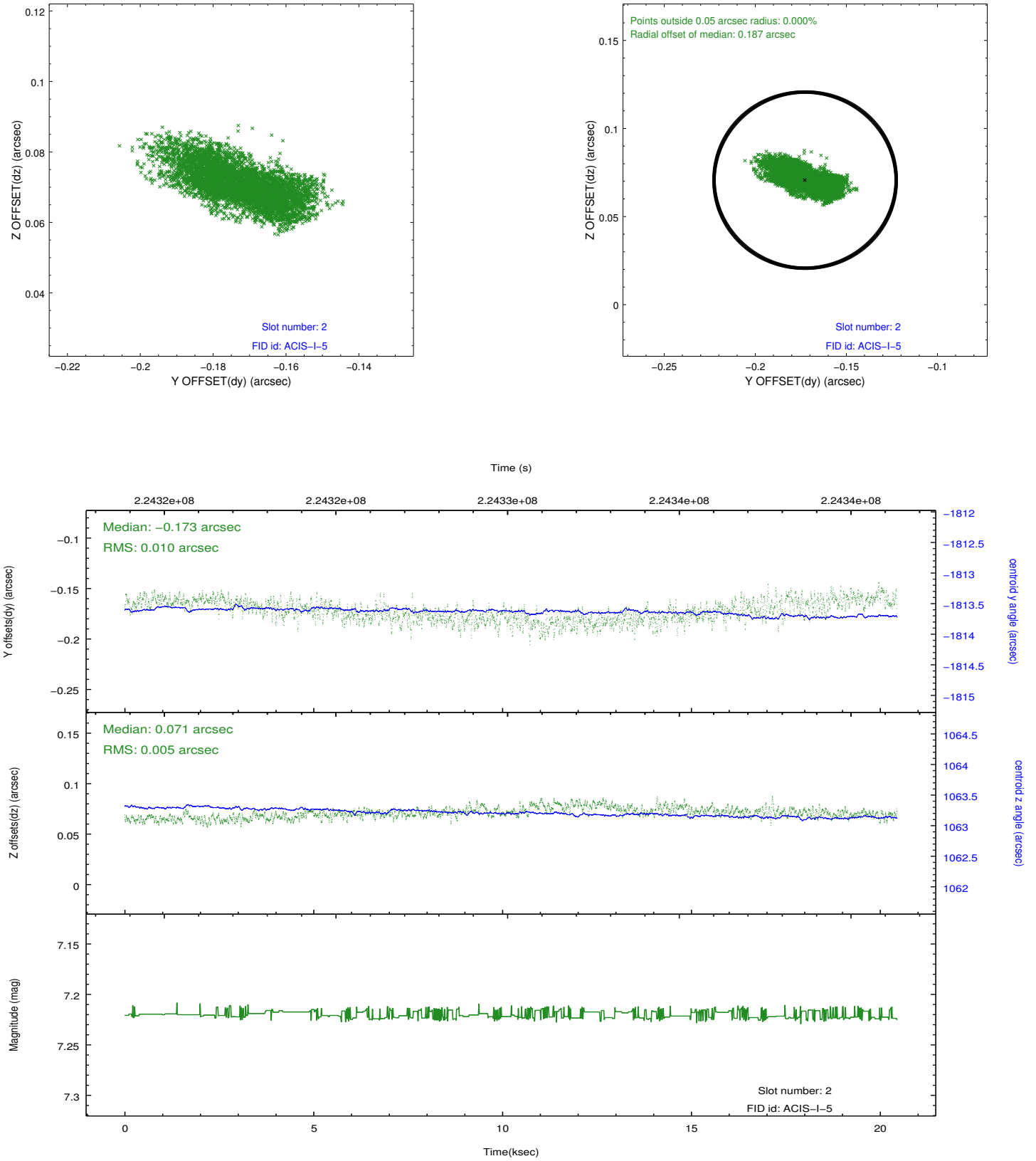
2.5.1 Slot 0



2.5.2 Slot 1



2.5.3 Slot 2



A Summary

A.1 Status

V&V Scientist	Jen Lauer
V&V Date (YYYY-MM-DD)	2013.01.09
V&V Edition	1
V&V Disposition and Status	OK
V&V Charge Time	19.05919

A.2 Comments