

V&V Reference Report

L2 ASCDS Version : 7.6.7

Observation 6224 - L2 Version 002
Chandra X-Ray Center

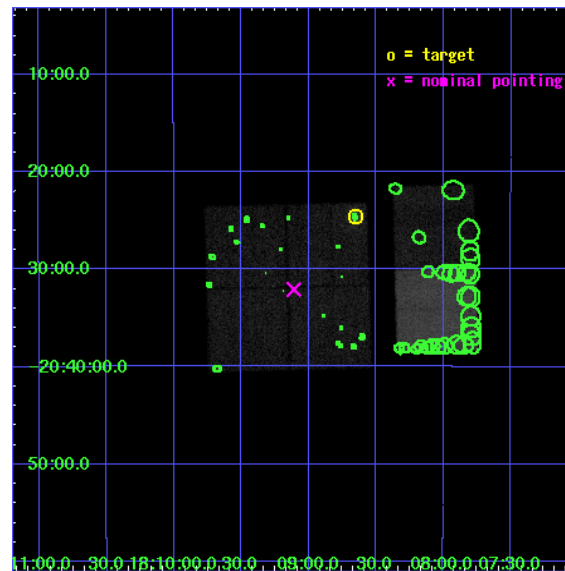
L2 Processing Date: Feb 22 2006

Contents

1	Front	2
2	OBI	3
2.1	OBI	3
2.1.1	Images	3
2.1.2	Bias	3
2.1.3	Parameters	4
2.1.4	Events	4
2.2	Compared Parameters	5
2.3	Aspect	6
2.4	Star Slots	9
2.4.1	Slot 3	9
2.4.2	Slot 4	10
2.4.3	Slot 5	11
2.4.4	Slot 6	12
2.4.5	Slot 7	13
2.5	FID Slots	14
2.5.1	Slot 0	14
2.5.2	Slot 1	15
2.5.3	Slot 2	16
3	Point Sources	17
A	Summary	18
A.1	Status	18
A.2	Comments	18

1 Front

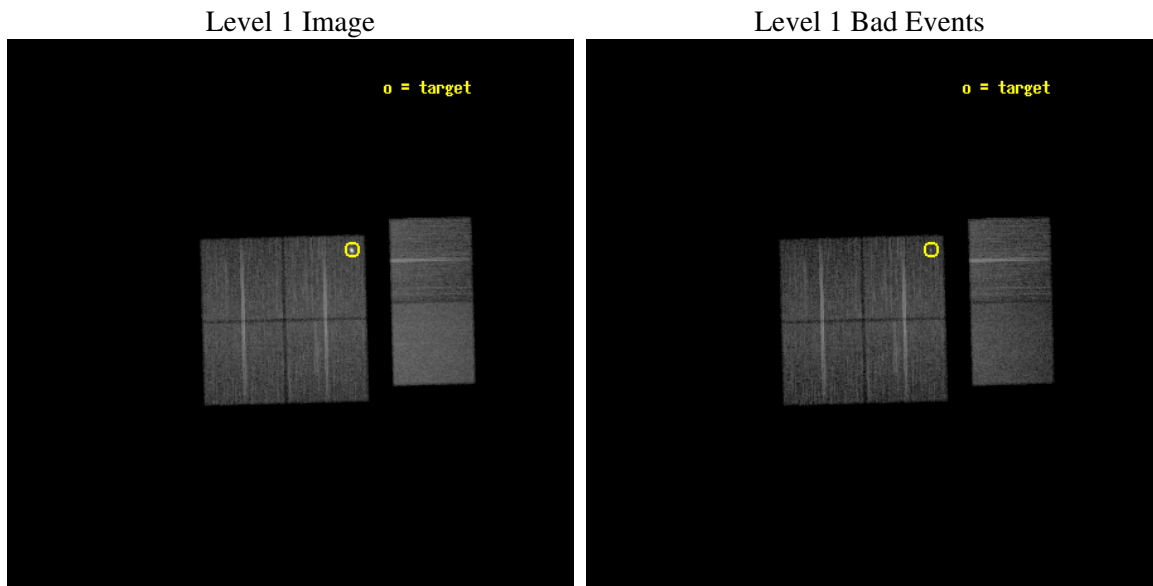
seq_num	500598
obs_id	6224
title	The X-ray Fluence of the SGR 1806-20 Hyperflare
observer	Dr Derek Fox
object	SGR 1806-20
dtcycle	0
cycle	P
ra_targ	272.16375
dec_targ	-20.410833
ra_nom	272.27745777531
dec_nom	-20.534785184203
roll_nom	88.545276971771
revision	2
ontime	19059.199928999
livetime	18817.860863426
ontime0	19059.199928999
ontime1	19059.199928999
ontime2	19059.199928999
ontime3	19059.199928999
ontime6	19059.199928999
ontime7	19059.199928999
l2events	170230



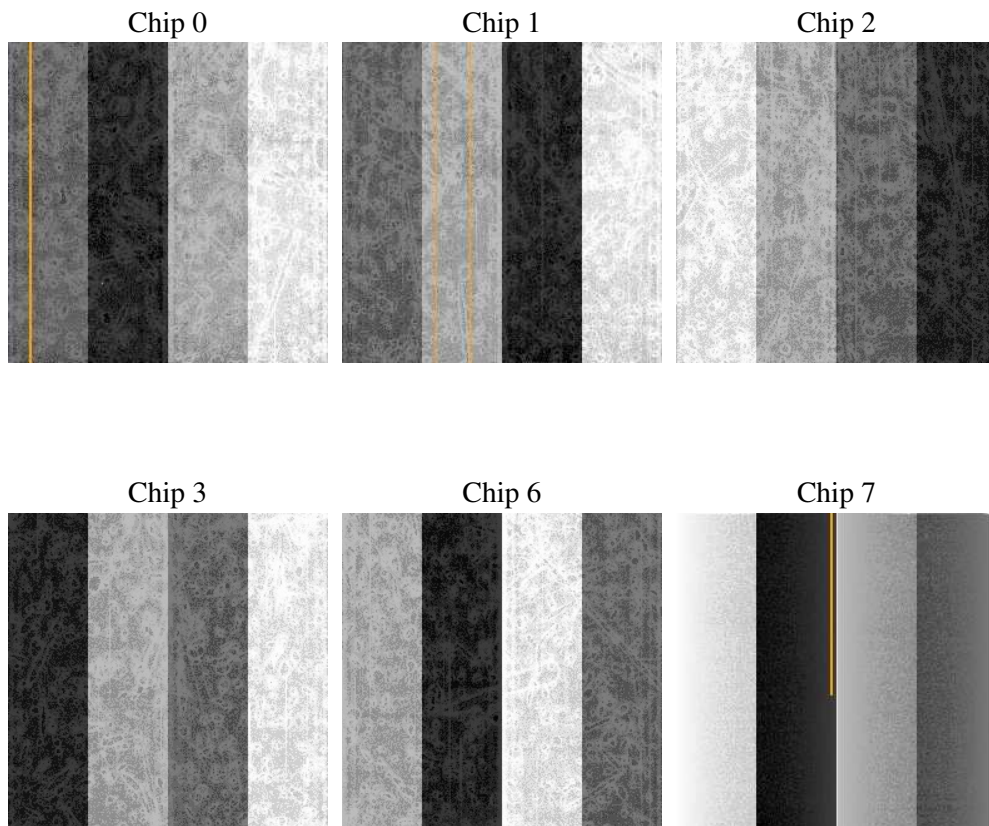
2 OBI

2.1 OBI

2.1.1 Images



2.1.2 Bias



2.1.3 Parameters

obi_num	0
ascdsver	7.6.7
caldsver	3.2.1
date	2006-02-22T21:37:53
revision	2

sched_exp_time	19103.333000
ontime	19066.803882599
ontime0	19066.803862691
ontime1	19066.803882599
ontime2	19066.803882599
ontime3	19066.803862691
ontime6	19066.803862691
ontime7	19066.803882599
l1events	878889

2.1.4 Events

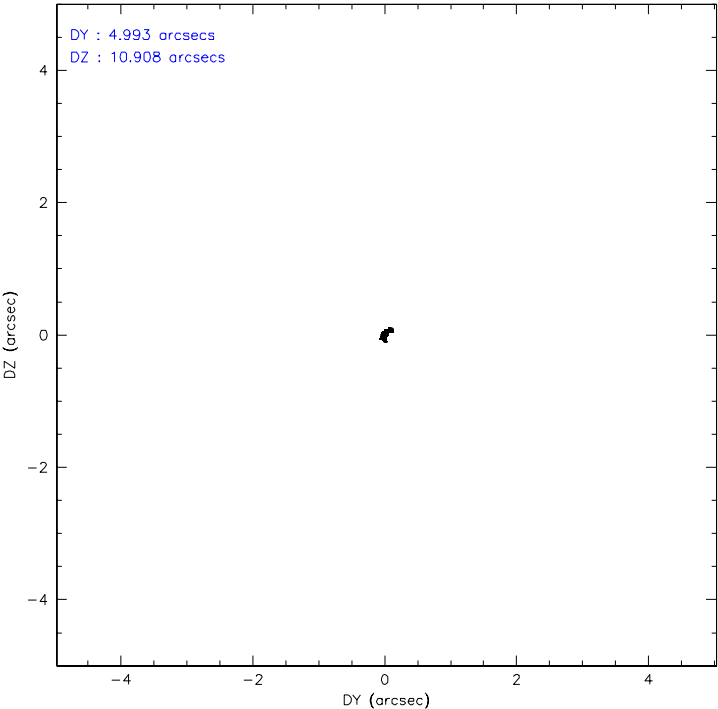
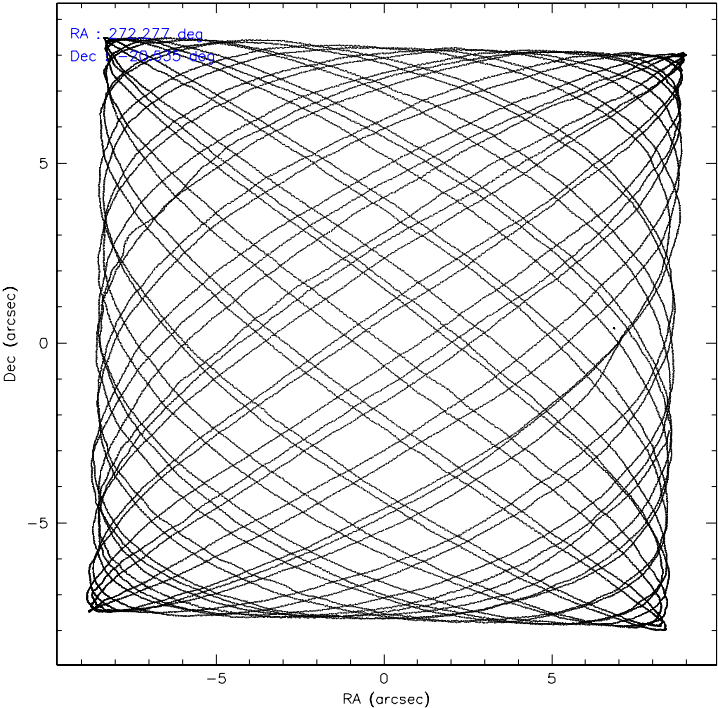
	ccd 0	ccd 1	ccd 2	ccd 3	ccd 6	ccd 7
level 1 events	124213	126165	151663	134477	146591	195780
rejected events	106116	107139	120448	116152	128048	116446
rejected %	85%	84%	79%	86%	87%	59%

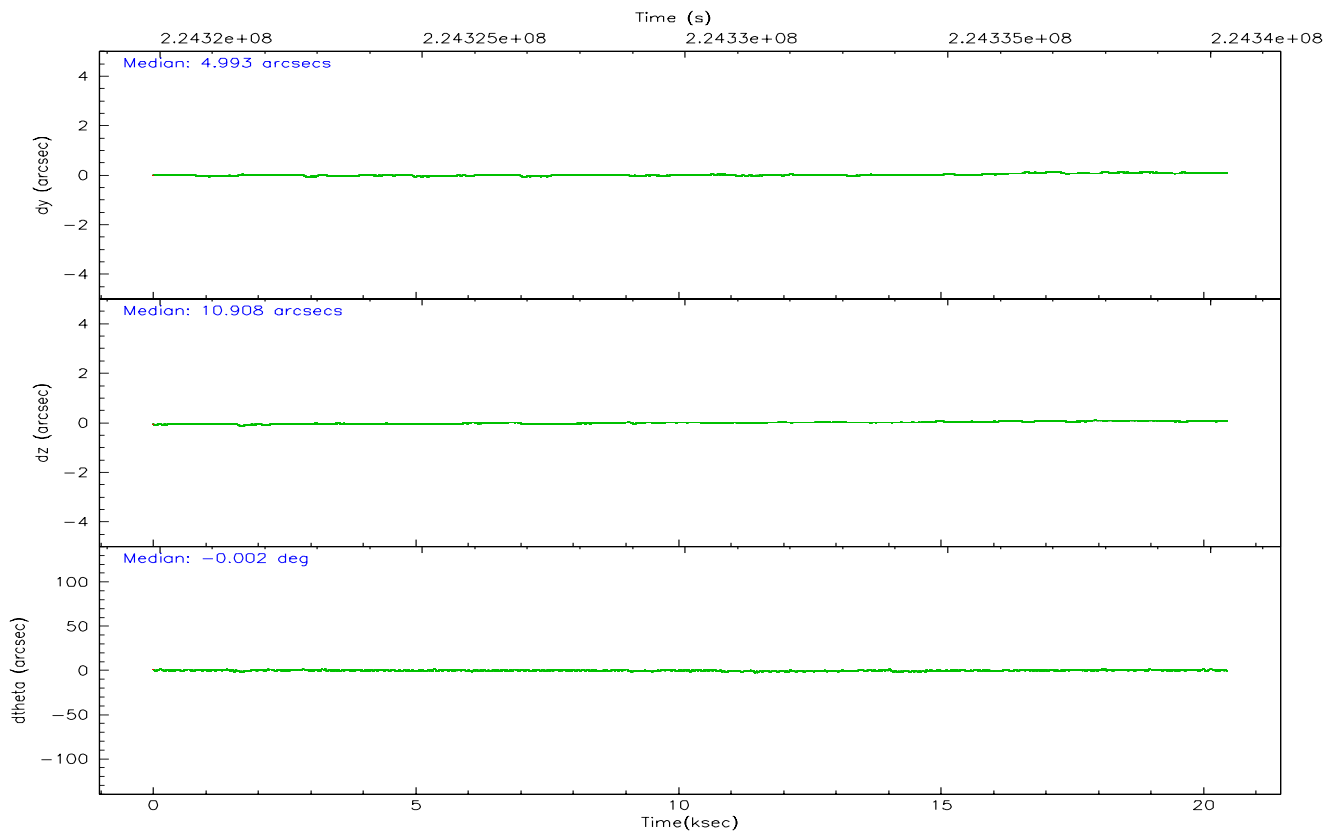
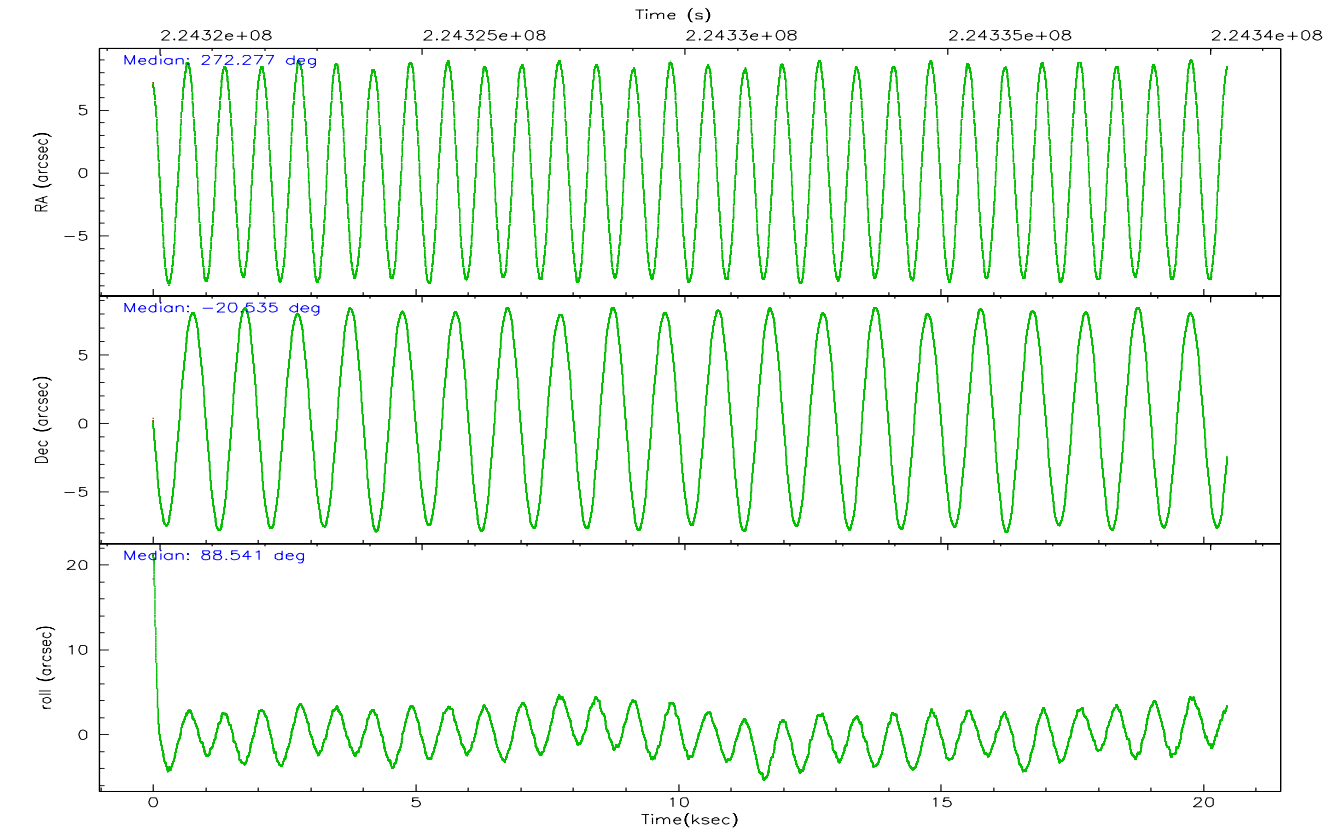
	ccd 0	ccd 1	ccd 2	ccd 3	ccd 6	ccd 7
grade 0 events	8277	7957	17401	8902	8149	5021
	6%	6%	11%	6%	5%	2%
grade 1 events	81	58	179	78	72	101
	0%	0%	0%	0%	0%	0%
grade 2 events	3596	3969	5543	3399	3853	19731
	2%	3%	3%	2%	2%	10%
grade 3 events	1753	1809	2229	1578	1599	4044
	1%	1%	1%	1%	1%	2%
grade 4 events	1628	1824	2242	1684	1524	3908
	1%	1%	1%	1%	1%	1%
grade 5 events	5389	5823	5452	6105	6676	12381
	4%	4%	3%	4%	4%	6%
grade 6 events	2847	3470	3810	2768	3433	46662
	2%	2%	2%	2%	2%	23%
grade 7 events	100642	101255	114807	109963	121285	103932
	81%	80%	75%	81%	82%	53%

2.2 Compared Parameters

Parameter	Planned	Actual	Parameter	Planned	Actual
Instrument	ACIS	ACIS	Obspar format version number	6	6
Detector	ACIS-012367	ACIS-012367	Obspar file type	PREDICTED	ACTUAL
Grating	NONE	NONE	Obspar update status	NONE	UPDATED
Data mode	FAINT	FAINT	On-chip summing requested	N	N
Observation mode	POINTING	POINTING	Subarray requested	NONE	NONE
Pointing RA	272.291538	272.2774577753103	Alternating exposures requested	N	N
Pointing Dec	-20.558742	-20.53478518420276	Primary exposure time	0.000000	3.2
Pointing Roll	88.341527	88.54527697177072			
SIM focus pos (mm)	-0.782348	-0.7809083437167272			
SIM defocus (mm)	0	0.001439871863259334			
SIM translation stage pos (mm)	-233.592463	-233.5874344608287			
SIM translation stage offset (mm)	0	-0.005018542100998502			
Observation start time	224321216.184000	224319669.95275			
Observation start date	2005-02-09T07:25:52	2005-02-09T07:01:09			
Observation end time	224340319.184000	224340553.81619			
Observation end date	2005-02-09T12:44:15	2005-02-09T12:49:13			
Read mode	TIMED	TIMED			

2.3 Aspect



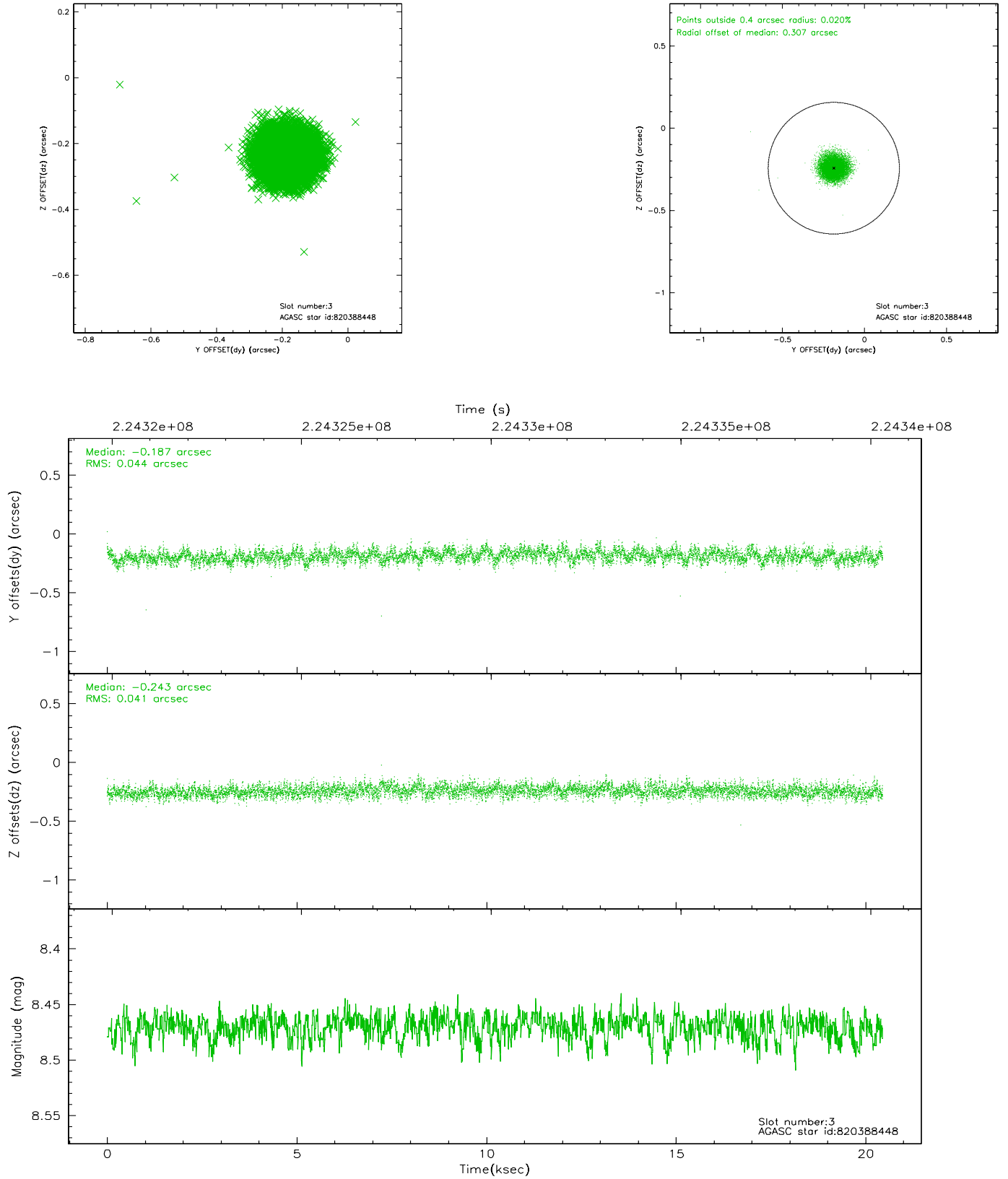


Slot Statistics

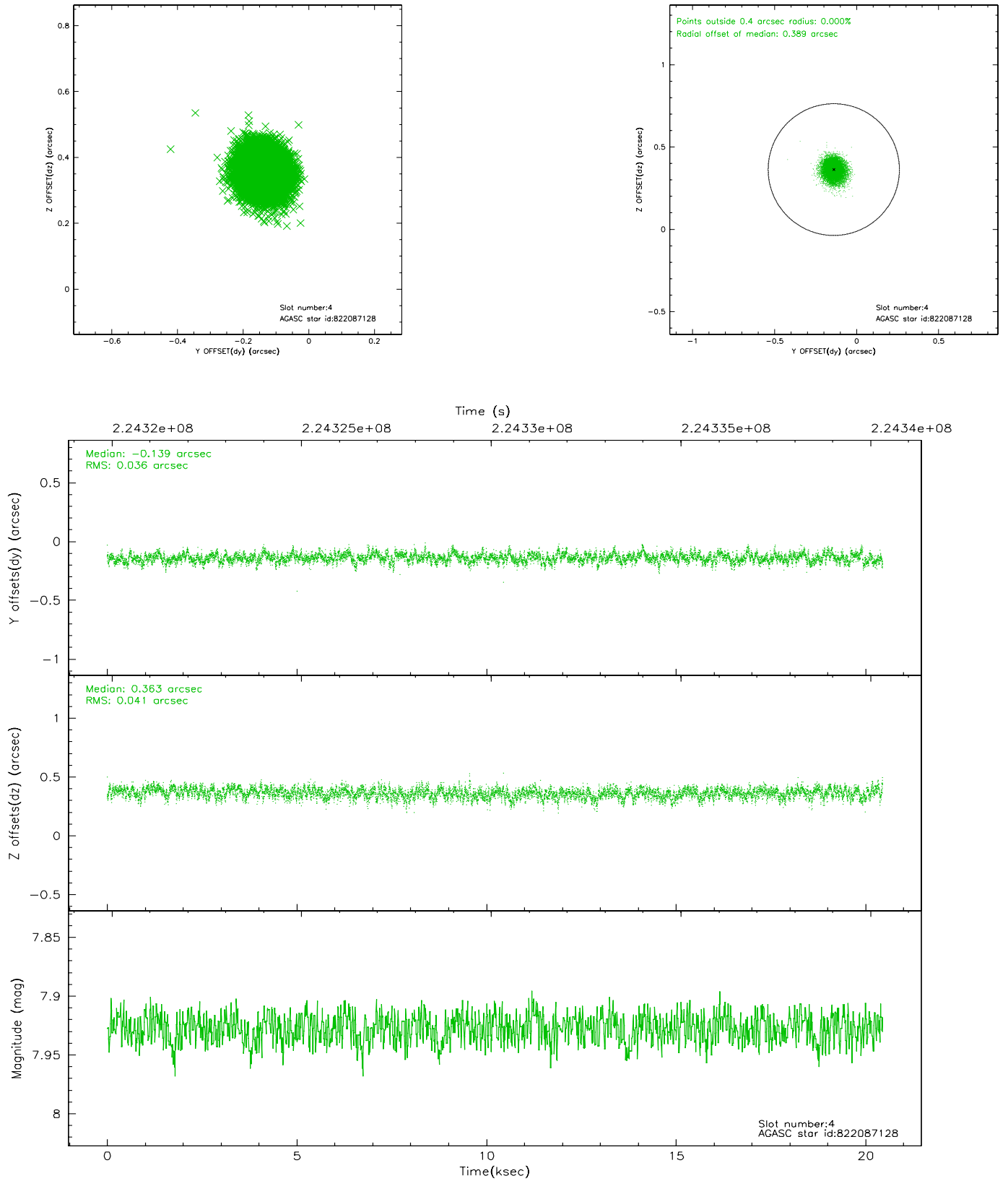
slot	status	id	mag	n_pts	med_dy	med_dz	dr1	dr2	ra	dec	mean_y	mean_z
0	FID	ACIS-I-1	7.24	4989	-0.001	-0.041	0.013	0.023	0.000000	0.000000	934.73	-834.45
1	FID	ACIS-I-4	7.18	4986	0.034	0.053	0.012	0.018	0.000000	0.000000	2154.91	1065.36
2	FID	ACIS-I-5	7.22	4989	-0.131	0.059	0.011	0.018	0.000000	0.000000	-1813.17	1063.43
3	GUIDE	820388448	8.47	9973	-0.187	-0.243	0.064	0.102	271.630569	-19.882892	2362.77	2307.23
4	GUIDE	822087128	7.93	9976	-0.139	0.363	0.058	0.093	272.956072	-20.371006	736.46	-2221.55
5	GUIDE	822101160	8.45	9974	-0.205	-0.111	0.056	0.091	272.245889	-20.018987	1937.91	210.55
6	GUIDE	820924984	7.47	9977	0.186	-0.220	0.064	0.109	271.834191	-21.201622	-2359.53	1467.17
7	GUIDE	822623312	8.99	9967	0.348	0.212	0.069	0.112	272.792493	-21.221864	-2339.76	-1749.40

2.4 Star Slots

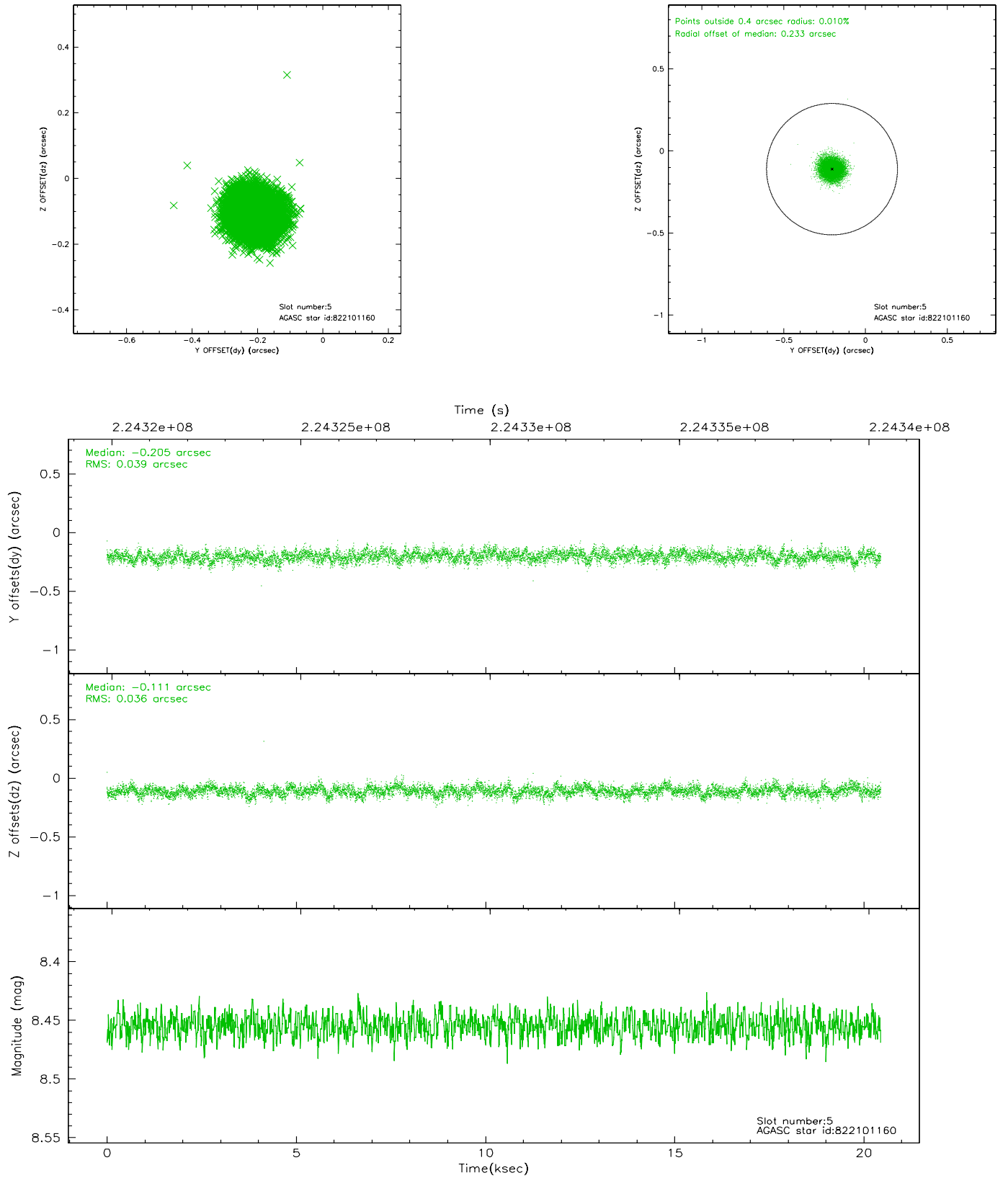
2.4.1 Slot 3



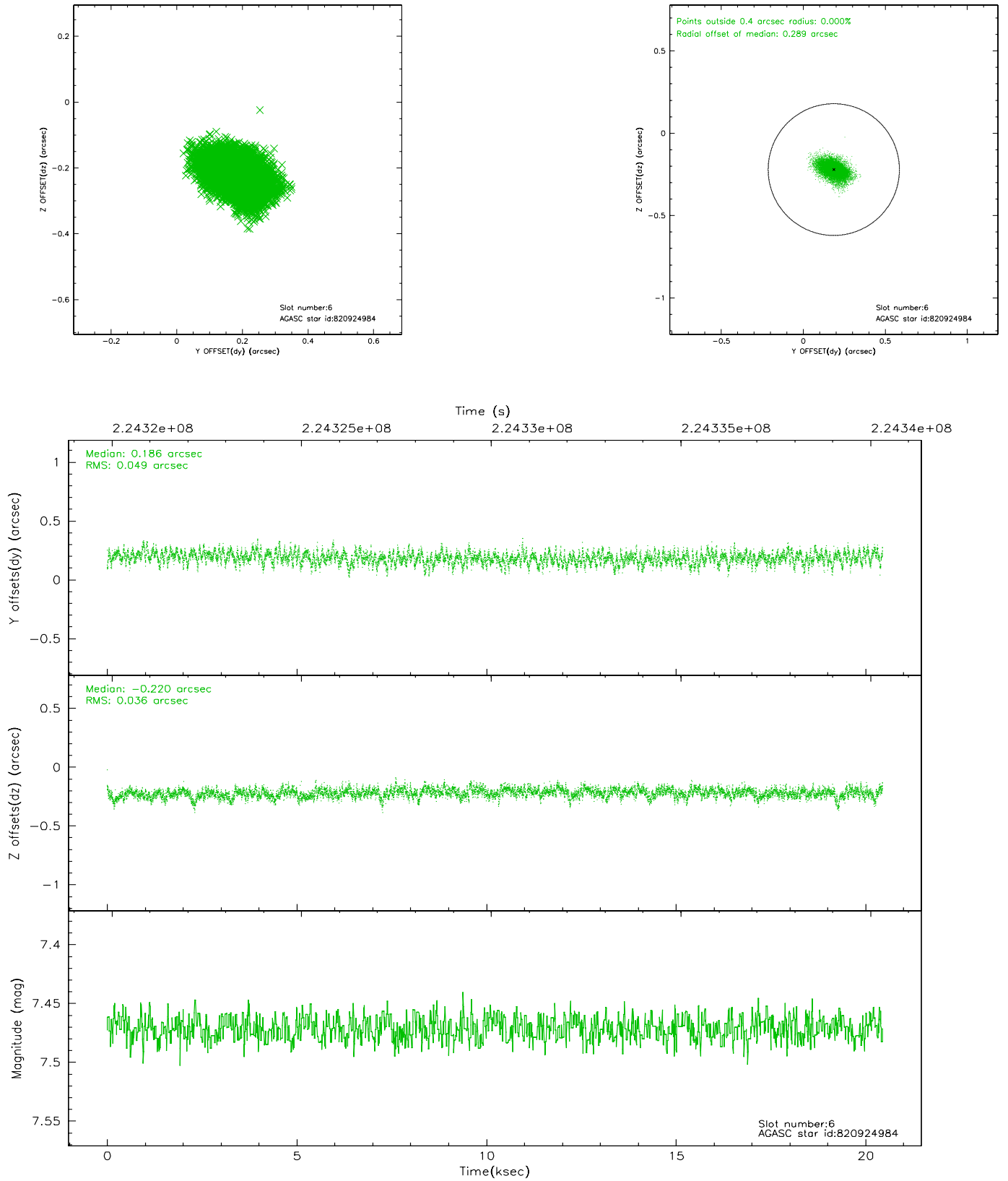
2.4.2 Slot 4



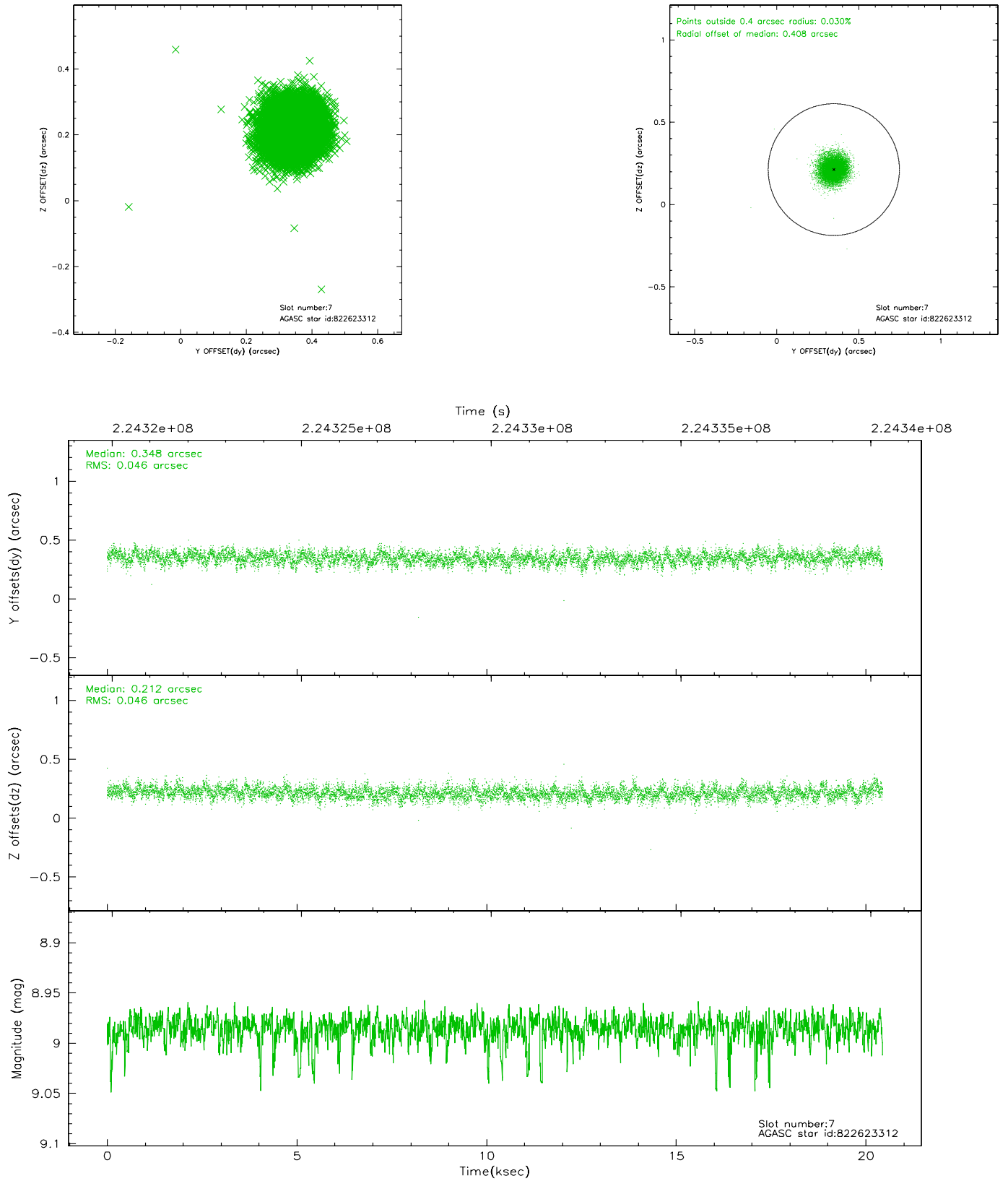
2.4.3 Slot 5



2.4.4 Slot 6

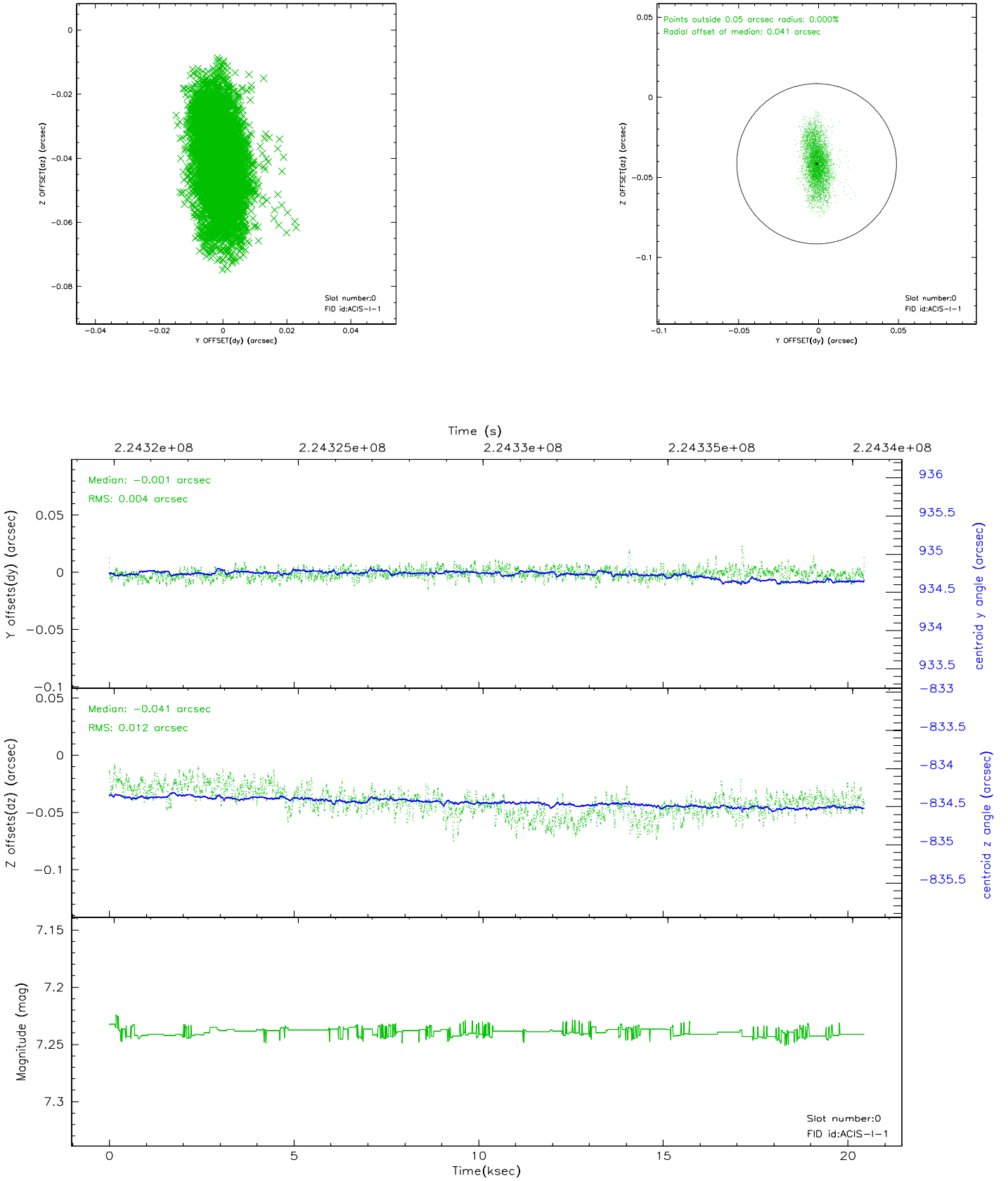


2.4.5 Slot 7

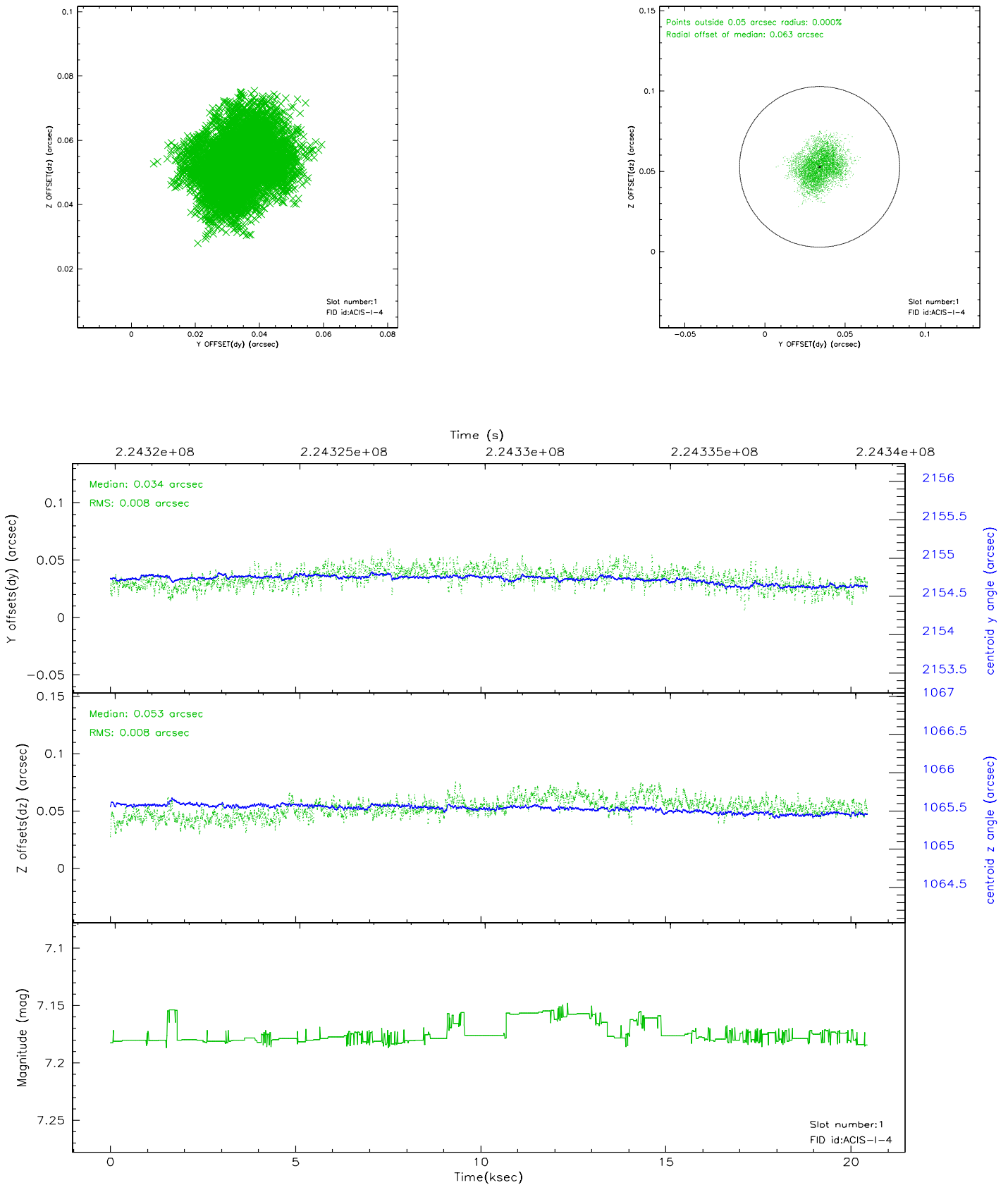


2.5 FID Slots

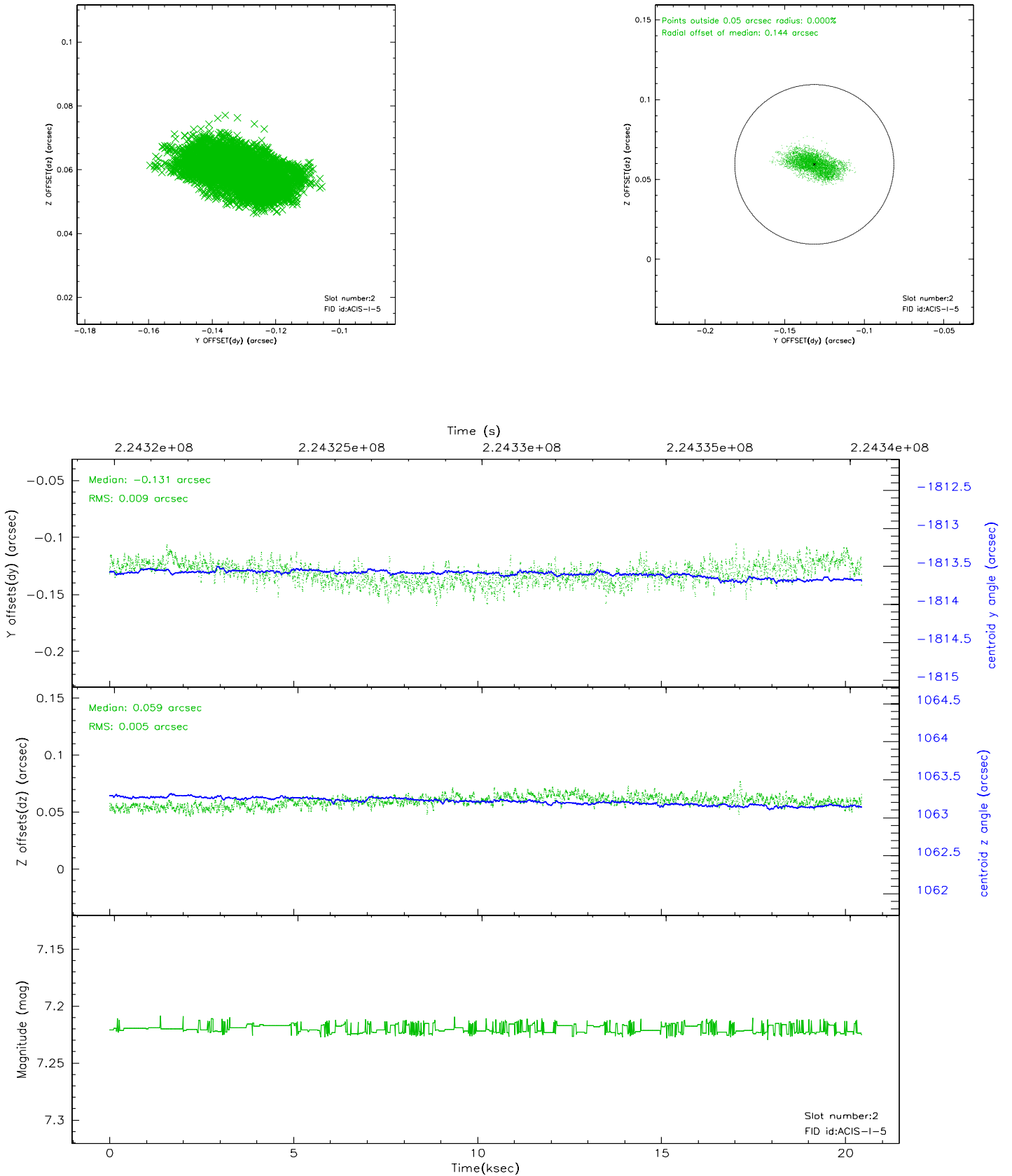
2.5.1 Slot 0



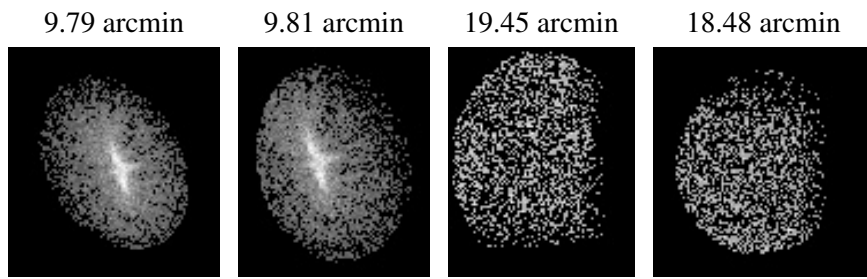
2.5.2 Slot 1



2.5.3 Slot 2



3 Point Sources



A Summary

A.1 Status

V&V Scientist	Beth Sundheim
V&V Date (YYYY-MM-DD)	2006.02.23
V&V Edition	1
V&V Disposition and Status	OK
V&V Charge Time	19.05919

A.2 Comments