

V&V Reference Report

L2 ASCDS Version : 8.4.5

Observation 62124 - L2 Version 4
Chandra X-Ray Center

L2 Processing Date : Aug 24 2012

Contents

1	Front	2
2	OBI	3
2.1	OBI	3
2.1.1	Images	3
2.1.2	Bias	3
2.1.3	Parameters	4
2.1.4	Events	4
2.2	Compared Parameters	5
2.3	Star Slots	6
2.4	FID Slots	6
A	Summary	7
A.1	Status	7
A.2	Comments	7

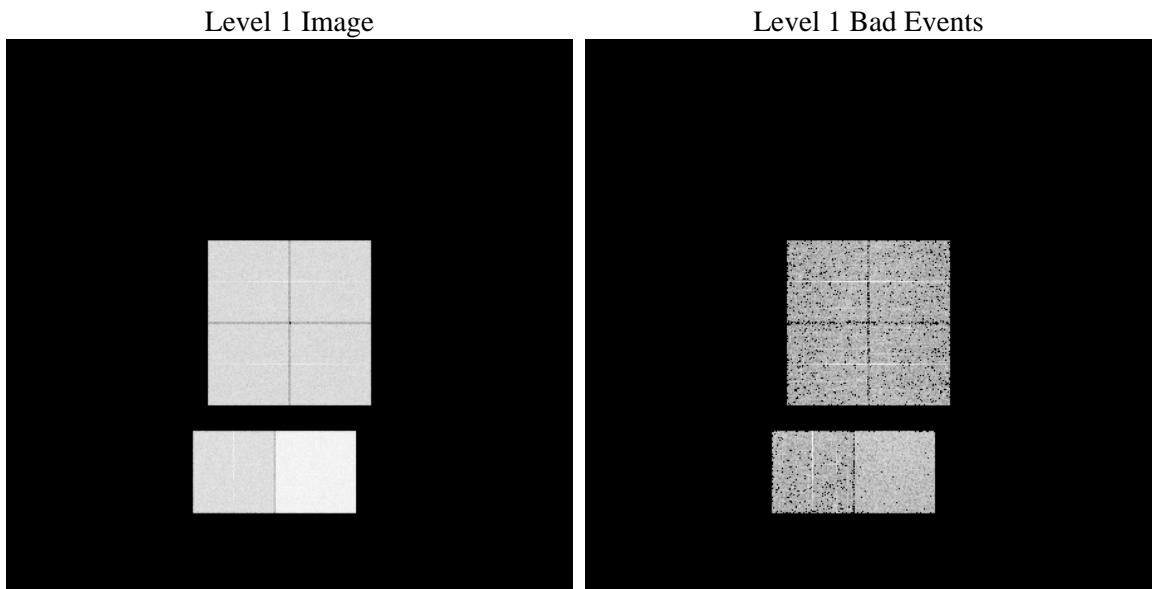
1 Front

seq_num	 	Sequence number
obs_id	62124	Observation id
title	ACIS-012367 diagnostics	Proposal title
observer	CHANDRA engineering request/realtime commanding	Principal investig
object	 	Source name
dtcycle	0	
cycle	P	events from which exps? Prim/Second/Both
ra_targ	0.0	Observer's specified target RA [deg]
dec_targ	0.0	Observer's specified target Dec [deg]
ra_nom	82.375811477766	Nominal RA [deg]
dec_nom	0.99820170628054	Nominal Dec [deg]
roll_nom	273.57901381533	Nominal Roll [deg]
revision	4	Processing version of data
ontime	3493.8190343678	Sum of GTIs [s]
livetime	3449.5781940294	Livetime [s]
ontime0	1432.538120687	Sum of GTIs [s]
ontime1	1439.0202006698	Sum of GTIs [s]
ontime2	1396.8867705464	Sum of GTIs [s]
ontime3	1396.8866508603	Sum of GTIs [s]
ontime6	1571.9027306437	Sum of GTIs [s]
ontime7	3493.8190343678	Sum of GTIs [s]
l2events	915229	Number of level 2 events

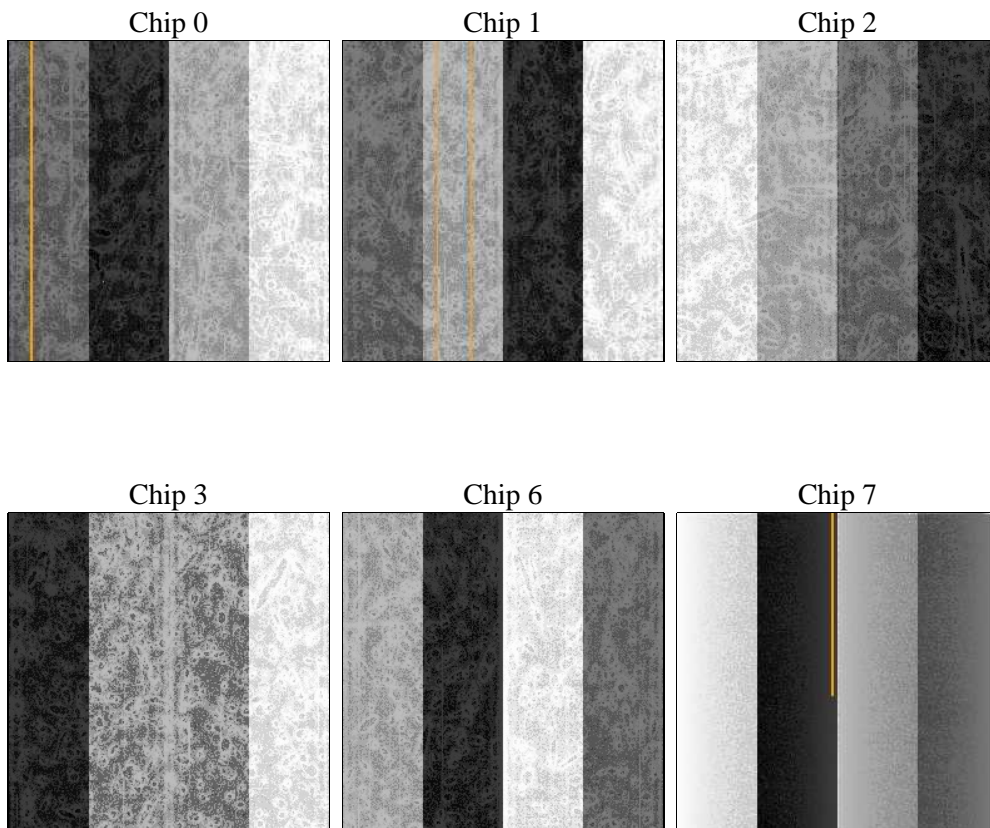
2 OBI

2.1 OBI

2.1.1 Images



2.1.2 Bias



2.1.3 Parameters

obi_num	0	Obi number	sched_exp_time	0.0	[s] Scheduled observation exposure time
ascdsver	8.4.5	Processing system revision	ontime	3493.8190343678	Sum of GTIs [s]
caldsver	4.5.1.1	 	ontime0	1432.538120687	Sum of GTIs [s]
date	2012-08-24T09:41:37	Date and time of file creation	ontime1	1439.0202006698	Sum of GTIs [s]
revision	4	Processing version of data	ontime2	1396.8867705464	Sum of GTIs [s]
			ontime3	1396.8866508603	Sum of GTIs [s]
			ontime6	1571.9027306437	Sum of GTIs [s]
			ontime7	3493.8190343678	Sum of GTIs [s]
			l1events	1061399	Number of level 1 events

2.1.4 Events

	ccd 0	ccd 1	ccd 2	ccd 3	ccd 6	ccd 7		ccd 0	ccd 1	ccd 2	ccd 3	ccd 6	ccd 7
level 1 events	140228	141093	138657	139660	161080	340681	grade 0 events	69827	70220	69137	70091	79569	83305
rejected events	16315	16413	16354	16491	17532	25265		49%	49%	49%	50%	49%	24%
rejected %	11%	11%	11%	11%	10%	7%	grade 1 events	460	409	403	434	446	263
								0%	0%	0%	0%	0%	0%
							grade 2 events	22145	22367	21673	22073	25263	71482
								15%	15%	15%	15%	15%	20%
							grade 3 events	7923	8132	7898	7960	9188	32930
								5%	5%	5%	5%	5%	9%
							grade 4 events	8014	8200	7835	7900	9137	33009
								5%	5%	5%	5%	5%	9%
							grade 5 events	1076	1032	1028	1051	1188	4514
								0%	0%	0%	0%	0%	1%
							grade 6 events	18283	18331	18010	17443	23073	100680
								13%	12%	12%	12%	14%	29%
							grade 7 events	12500	12402	12673	12708	13216	14498
								8%	8%	9%	9%	8%	4%

2.2 Compared Parameters

Parameter	Planned	Actual	Parameter	Planned	Actual
Instrument	ACIS	ACIS	Obspar format version number	7	7
Detector	ACIS-012367	ACIS-012367	Obspar file type	PREDICTED	ACTUAL
Grating	NONE	NONE	Obspar update status	NONE	UPDATED
Data mode	FAINT	FAINT	On-chip summing requested	N	N
Observation mode	SECONDARY	SECONDARY	Subarray requested	NONE	NONE
[deg] Pointing RA	0	82.37581147776621	Alternating exposures requested	N	N
[deg] Pointing Dec	0	0.9982017062805421	[s] Primary exposure time	0.000000	3.2
[deg] Pointing Roll	0.0	273.5790138153255			
[mm] SIM focus pos	-0.782348	-0.7809083437167272			
[mm] SIM defocus	0	0.7524282956875696			
[mm] SIM translation stage pos	-233.592463	250.4635187648994			
[mm] SIM translation stage offset	0	-0.007540371344731511			
[s] Observation start time (MET)	69264786.558	69264785.789764			
Observation start date	2000-03-12T16:13:07	2000-03-12T16:13:05			
[s] Observation end time (MET)	69272086.608	69272085.840031			
Observation end date	2000-03-12T18:14:47	2000-03-12T18:14:45			
Read mode	TIMED	TIMED			

2.3 Star Slots

2.4 FID Slots

A Summary

A.1 Status

V&V Scientist	Jen Lauer
V&V Date (YYYY-MM-DD)	2012.08.27
V&V Edition	1
V&V Disposition and Status	OK
V&V Charge Time	3.4938190343678

A.2 Comments