

V&V Reference Report

L2 ASCDS Version : 7.6.10

Observation 61834 - L2 Version 001
Chandra X-Ray Center

L2 Processing Date : Jun 18 2007

Contents

1	Front	2
2	OBI	3
2.1	OBI	3
2.1.1	Images	3
2.1.2	Bias	3
2.1.3	Parameters	4
2.1.4	Events	4
2.2	Compared Parameters	5
2.3	Star Slots	6
2.4	FID Slots	6
A	Summary	7
A.1	Status	7
A.2	Comments	7

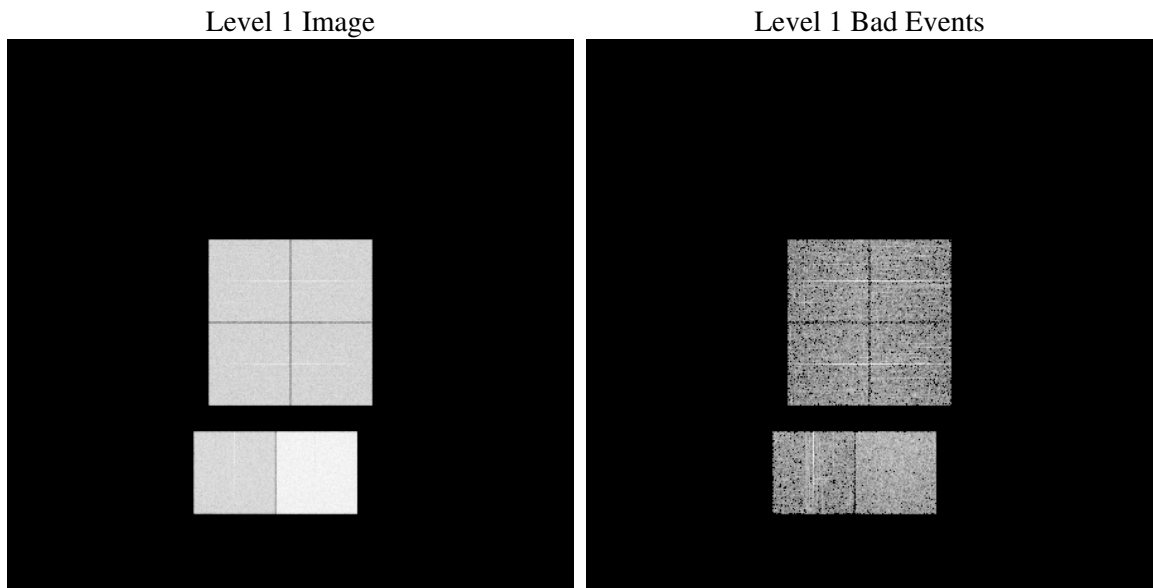
1 Front

seq_num	
obs_id	61834
title	ACIS-012367 diagnostics
observer	CHANDRA engineering request/realtime commanding
object	
dtcycle	0
cycle	P
ra_targ	0.0
dec_targ	0.0
ra_nom	238.98414570748
dec_nom	73.018810058786
roll_nom	8.3464308888482
revision	2
ontime	5467.2865693718
livetime	5398.0564948257
ontime0	2425.4520047903
ontime1	2457.9036341608
ontime2	2388.3399972767
ontime3	2368.8940165043
ontime6	2597.3502243906
ontime7	5467.2865693718
l2events	1262993

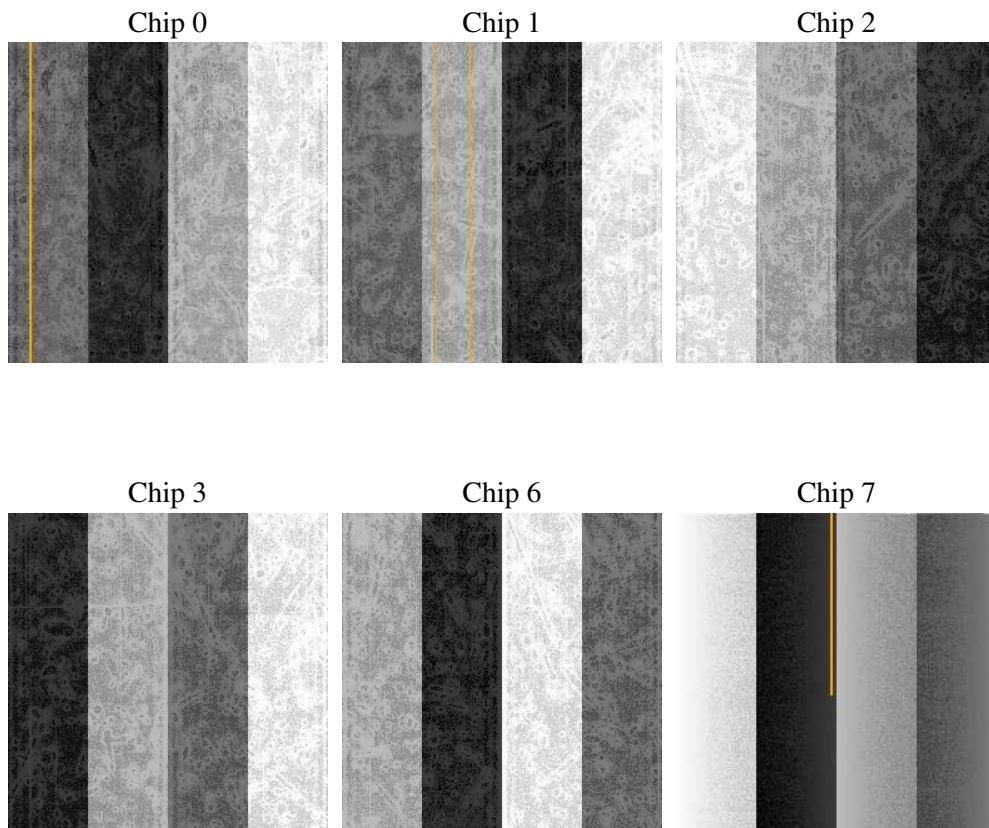
2 OBI

2.1 OBI

2.1.1 Images



2.1.2 Bias



2.1.3 Parameters

obi_num	1
ascdsver	7.6.10
caldsver	3.4.0
date	2007-06-18T20:51:58
revision	2

sched_exp_time	0.0
ontime	5467.2865693718
ontime0	2425.4520047903
ontime1	2457.9036341608
ontime2	2388.3399972767
ontime3	2368.8940165043
ontime6	2597.3502243906
ontime7	5467.2865693718
l1events	1430661

2.1.4 Events

	ccd 0	ccd 1	ccd 2	ccd 3	ccd 6	ccd 7
level 1 events	194581	197439	193933	192686	218128	433894
rejected events	17124	17682	17398	17690	18352	25178
rejected %	8%	8%	8%	9%	8%	5%

	ccd 0	ccd 1	ccd 2	ccd 3	ccd 6	ccd 7
grade 0 events	98180	99209	98366	97924	109275	105986
	50%	50%	50%	50%	50%	24%
grade 1 events	483	451	471	473	515	302
	0%	0%	0%	0%	0%	0%
grade 2 events	31166	31862	31012	30760	34562	90820
	16%	16%	15%	15%	15%	20%
grade 3 events	11222	11395	11187	11200	12307	41779
	5%	5%	5%	5%	5%	9%
grade 4 events	11204	11469	11100	11094	12334	41498
	5%	5%	5%	5%	5%	9%
grade 5 events	1354	1328	1267	1294	1545	5748
	0%	0%	0%	0%	0%	1%
grade 6 events	25940	26053	25110	24244	31559	128863
	13%	13%	12%	12%	14%	29%
grade 7 events	15032	15672	15420	15697	16031	18898
	7%	7%	7%	8%	7%	4%

2.2 Compared Parameters

Parameter	Planned	Actual	Parameter	Planned	Actual
Instrument	ACIS	ACIS	Obspar format version number	6	6
Detector	ACIS-012367	ACIS-012367	Obspar file type	PREDICTED	ACTUAL
Grating	NONE	NONE	Obspar update status	NONE	UPDATED
Data mode	FAINT	FAINT	On-chip summing requested	N	N
Observation mode	SECONDARY	SECONDARY	Subarray requested	NONE	NONE
Pointing RA	0	238.9841457074794	Alternating exposures requested	N	N
Pointing Dec	0	73.01881005878627	Primary exposure time	0.000000	3.2
Pointing Roll	0.0	8.34643088884819			
SIM focus pos (mm)	-0.782348	-0.6828225247311905			
SIM defocus (mm)	0	0.8505141146731063			
SIM translation stage pos (mm)	-233.592463	250.466033080201			
SIM translation stage offset (mm)	0	-0.01005468664627074			
Observation start time	92057302.406	92057301.63792901			
Observation start date	2000-12-01T11:28:22	2000-12-01T11:28:21			
Observation end time	92105215.008	92105214.239756			
Observation end date	2000-12-02T00:46:55	2000-12-02T00:46:54			
Read mode	TIMED	TIMED			

2.3 Star Slots

2.4 FID Slots

A Summary

A.1 Status

V&V Scientist	Jen Lauer
V&V Date (YYYY-MM-DD)	2007.06.19
V&V Edition	1
V&V Disposition and Status	OK
V&V Charge Time	5.46728656

A.2 Comments