

V&V Reference Report

L2 ASCDS Version : 7.6.9

Observation 61644 - L2 Version 001
Chandra X-Ray Center

L2 Processing Date : Nov 29 2006

Contents

1	Front	2
2	OBI	3
2.1	OBI	3
2.1.1	Images	3
2.1.2	Bias	3
2.1.3	Parameters	4
2.1.4	Events	4
2.2	Compared Parameters	5
2.3	Aspect	6
2.4	Star Slots	8
2.5	FID Slots	8
A	Summary	9
A.1	Status	9
A.2	Comments	9

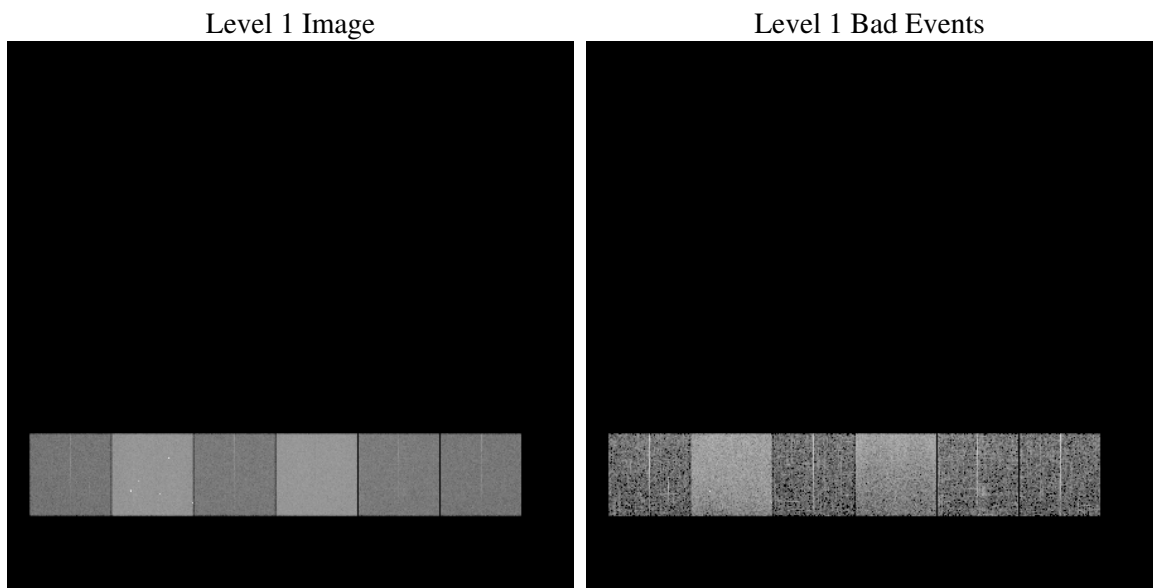
1 Front

seq_num	
obs_id	61644
title	ACIS-456789 diagnostics
observer	CHANDRA engineering request/realtime commanding
object	
dtcycle	0
cycle	P
ra_targ	0.0
dec_targ	0.0
ra_nom	279.98066176484
dec_nom	-19.977790913177
roll_nom	96.5452119738
revision	2
ontime	5268.3883852214
livetime	5201.6768792451
ontime4	2115.016106382
ontime5	5637.8984946162
ontime6	2254.3397660702
ontime7	5268.3883852214
ontime8	2309.5194163024
ontime9	2173.1907659024
l2events	1213885

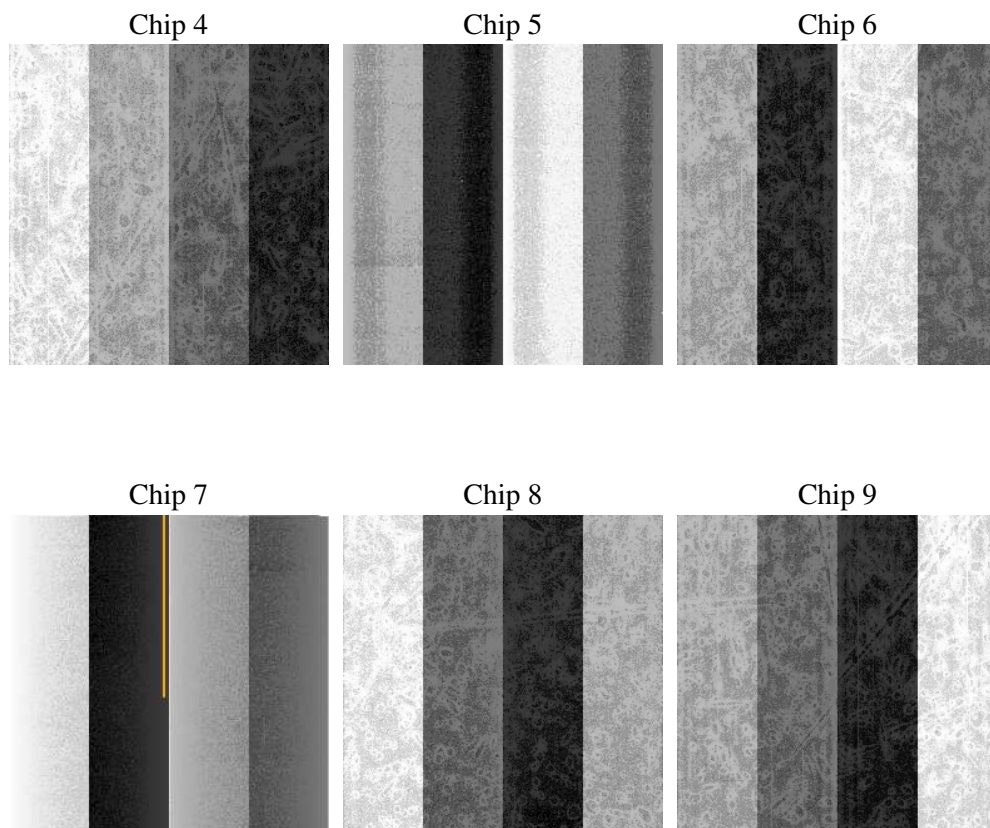
2 OBI

2.1 OBI

2.1.1 Images



2.1.2 Bias



2.1.3 Parameters

obi_num	0
ascdsver	7.6.9
caldsver	3.2.4
date	2006-11-30T00:30:43
revision	2

sched_exp_time	0.0
ontime	5269.8924098462
ontime4	2116.3970110118
ontime5	5639.3614792377
ontime6	2255.7617107034
ontime7	5269.8924098462
ontime8	2310.859280929
ontime9	2174.7358305305
l1events	1430852

2.1.4 Events

	ccd 4	ccd 5	ccd 6	ccd 7	ccd 8	ccd 9
level 1 events	153662	377251	173376	384700	180392	161471
rejected events	17906	48718	17621	37817	20128	17829
rejected %	11%	12%	10%	9%	11%	11%

	ccd 4	ccd 5	ccd 6	ccd 7	ccd 8	ccd 9
grade 0 events	76610	46425	85117	67274	88268	78549
	49%	12%	49%	17%	48%	48%
grade 1 events	407	101	432	142	422	418
	0%	0%	0%	0%	0%	0%
grade 2 events	24126	154288	27201	102655	27956	25455
	15%	40%	15%	26%	15%	15%
grade 3 events	8465	12433	9485	26954	10102	8926
	5%	3%	5%	7%	5%	5%
grade 4 events	8408	12252	9699	26727	10248	8839
	5%	3%	5%	6%	5%	5%
grade 5 events	1156	5908	1379	5459	1537	1401
	0%	1%	0%	1%	0%	0%
grade 6 events	18147	103135	24253	123273	23690	21873
	11%	27%	13%	32%	13%	13%
grade 7 events	16343	42709	15810	32216	18169	16010
	10%	11%	9%	8%	10%	9%

2.2 Compared Parameters

Parameter	Planned	Actual	Parameter	Planned	Actual
Instrument	ACIS	ACIS	Obspar format version number	6	6
Detector	ACIS-456789	ACIS-456789	Obspar file type	PREDICTED	ACTUAL
Grating	NONE	NONE	Obspar update status	NONE	UPDATED
Data mode	FAINT	FAINT	On-chip summing requested	N	N
Observation mode	SECONDARY	SECONDARY	Subarray requested	NONE	NONE
Pointing RA	0	279.9806617648372	Alternating exposures requested	N	N
Pointing Dec	0	-19.97779091317707	Primary exposure time	0.000000	3.2
Pointing Roll	0.0	96.54521197379995			
SIM focus pos (mm)	-0.684267	-0.6828225247311905			
SIM defocus (mm)	0	0.8505141146731063			
SIM translation stage pos (mm)	-190.132523	250.466033080201			
SIM translation stage offset (mm)	0	-0.01005468664627074			
Observation start time	105765519.685	105765518.91629			
Observation start date	2001-05-09T03:18:40	2001-05-09T03:18:38			
Observation end time	105777290.785	105777290.01675			
Observation end date	2001-05-09T06:34:51	2001-05-09T06:34:50			
Read mode	TIMED	TIMED			

2.3 Aspect

2.4 Star Slots

2.5 FID Slots

A Summary

A.1 Status

V&V Scientist	Beth Sundheim
V&V Date (YYYY-MM-DD)	2006.11.30
V&V Edition	1
V&V Disposition and Status	OK
V&V Charge Time	5.26838838

A.2 Comments