

V&V Reference Report

L2 ASCDS Version : 7.6.9

Observation 61514 - L2 Version 001
Chandra X-Ray Center

L2 Processing Date : Dec 19 2006

Contents

1	Front	2
2	OBI	3
2.1	OBI	3
2.1.1	Images	3
2.1.2	Bias	3
2.1.3	Parameters	4
2.1.4	Events	4
2.2	Compared Parameters	5
2.3	Aspect	6
2.4	Star Slots	8
2.5	FID Slots	8
A	Summary	9
A.1	Status	9
A.2	Comments	9

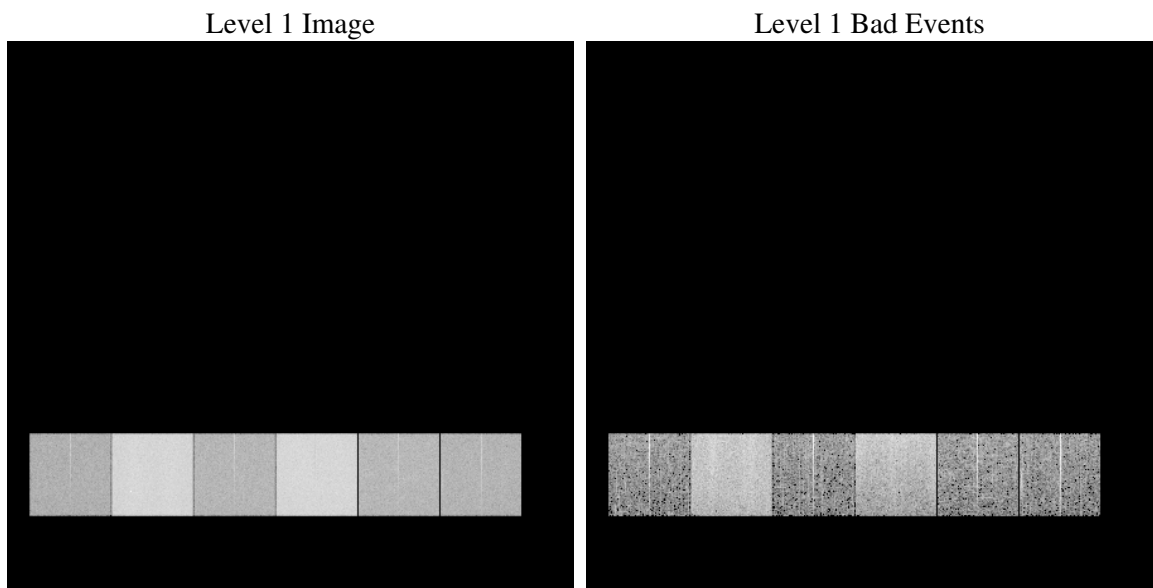
1 Front

seq_num	
obs_id	61514
title	ACIS-456789 diagnostics
observer	CHANDRA engineering request/realtime commanding
object	
dtcycle	0
cycle	P
ra_targ	0.0
dec_targ	0.0
ra_nom	200.0120372906
dec_nom	8.9739238842231
roll_nom	261.75982309707
revision	2
ontime	6220.7622537166
livetime	6141.9912163667
ontime4	2321.8444043398
ontime5	6761.2105593234
ontime6	2547.9669568986
ontime7	6220.7622537166
ontime8	2625.833797276
ontime9	2486.2644957602
l2events	1290002

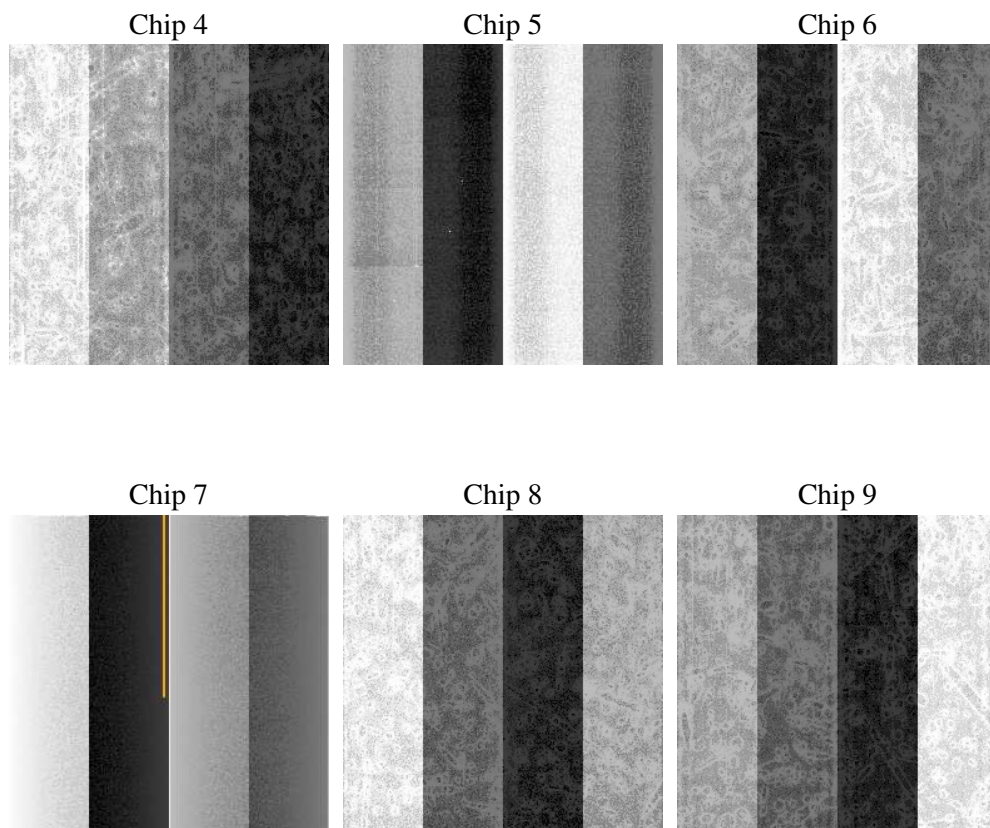
2 OBI

2.1 OBI

2.1.1 Images



2.1.2 Bias



2.1.3 Parameters

obi_num	0
ascdsver	7.6.9
caldsver	3.2.4
date	2006-12-19T17:48:20
revision	2

sched_exp_time	0.0
ontime	6238.9462109804
ontime4	2333.546361357
ontime5	6783.4266041964
ontime6	2557.1779613197
ontime7	6238.9462109804
ontime8	2634.9627216905
ontime9	2495.5986201763
l1events	1546725

2.1.4 Events

	ccd 4	ccd 5	ccd 6	ccd 7	ccd 8	ccd 9
level 1 events	155540	418905	182430	428071	189505	172274
rejected events	21479	63814	21551	50367	23018	21829
rejected %	13%	15%	11%	11%	12%	12%

	ccd 4	ccd 5	ccd 6	ccd 7	ccd 8	ccd 9
grade 0 events	72602	37610	86693	67366	91672	81314
	46%	8%	47%	15%	48%	47%
grade 1 events	340	87	371	160	417	418
	0%	0%	0%	0%	0%	0%
grade 2 events	27966	170578	29953	116346	30290	28253
	17%	40%	16%	27%	15%	16%
grade 3 events	7750	11686	9573	28058	10303	9109
	4%	2%	5%	6%	5%	5%
grade 4 events	7711	10922	9437	26950	10153	8931
	4%	2%	5%	6%	5%	5%
grade 5 events	1288	6835	1578	6681	1692	1542
	0%	1%	0%	1%	0%	0%
grade 6 events	18735	125495	25808	140216	24687	23453
	12%	29%	14%	32%	13%	13%
grade 7 events	19148	55692	19017	42294	20291	19254
	12%	13%	10%	9%	10%	11%

2.2 Compared Parameters

Parameter	Planned	Actual	Parameter	Planned	Actual
Instrument	ACIS	ACIS	Obspar format version number	6	6
Detector	ACIS-456789	ACIS-456789	Obspar file type	PREDICTED	ACTUAL
Grating	NONE	NONE	Obspar update status	NONE	UPDATED
Data mode	FAINT	FAINT	On-chip summing requested	N	N
Observation mode	SECONDARY	SECONDARY	Subarray requested	NONE	NONE
Pointing RA	0	200.0120372906026	Alternating exposures requested	N	N
Pointing Dec	0	8.973923884223128	Primary exposure time	0.000000	3.2
Pointing Roll	0.0	261.7598230970716			
SIM focus pos (mm)	-0.684267	-0.7809083437167272			
SIM defocus (mm)	0	0.7524282956875696			
SIM translation stage pos (mm)	-190.132523	250.466033080201			
SIM translation stage offset (mm)	0	-0.01005468664627074			
Observation start time	113338658.68	113338657.91195			
Observation start date	2001-08-04T18:57:39	2001-08-04T18:57:37			
Observation end time	113360608.031	113360607.26281			
Observation end date	2001-08-05T01:03:28	2001-08-05T01:03:27			
Read mode	TIMED	TIMED			

2.3 Aspect

2.4 Star Slots

2.5 FID Slots

A Summary

A.1 Status

V&V Scientist	Beth Sundheim
V&V Date (YYYY-MM-DD)	2006.12.19
V&V Edition	1
V&V Disposition and Status	OK
V&V Charge Time	6.22076225

A.2 Comments

Focal plane temperature is warmer than -118.7 C degrees during the entire observation. This temperature is the upper limit of the verified ACIS calibration for the front-illuminated chips.