

V&V Reference Report

L2 ASCDS Version : 8.4.5

Observation 61504 - L2 Version 3
Chandra X-Ray Center

L2 Processing Date : Sep 22 2012

Contents

1	Front	2
2	OBI	3
2.1	OBI	3
2.1.1	Images	3
2.1.2	Bias	3
2.1.3	Parameters	4
2.1.4	Events	4
2.2	Compared Parameters	5
2.3	Star Slots	6
2.4	FID Slots	6
A	Summary	7
A.1	Status	7
A.2	Comments	7

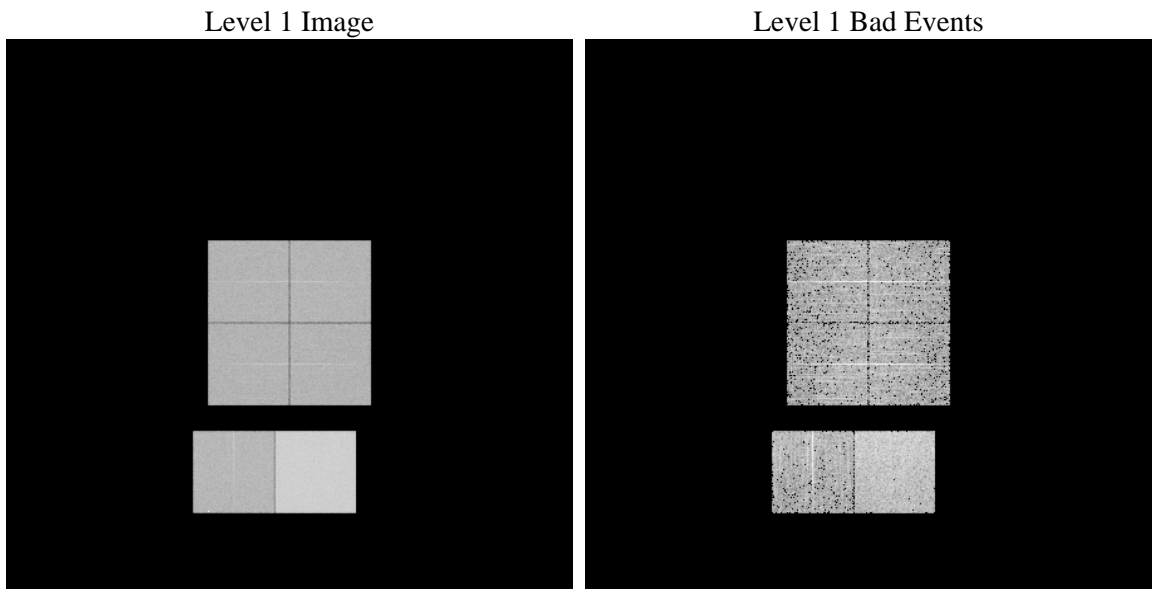
1 Front

seq_num	 	Sequence number
obs_id	61504	Observation id
title	ACIS-012367 diagnostics	Proposal title
observer	CHANDRA engineering request/realtime commanding	Principal investig
object	 	Source name
dtcycle	0	
cycle	P	events from which exps? Prim/Second/Both
ra_targ	0.0	Observer's specified target RA [deg]
dec_targ	0.0	Observer's specified target Dec [deg]
ra_nom	332.03154808571	Nominal RA [deg]
dec_nom	-49.979695697786	Nominal Dec [deg]
roll_nom	12.291975301049	Nominal Roll [deg]
revision	3	Processing version of data
ontime	6197.063712135	Sum of GTIs [s]
livetime	6118.5927599881	Livetime [s]
ontime0	2411.3306239843	Sum of GTIs [s]
ontime1	2486.0590255111	Sum of GTIs [s]
ontime2	2346.5099736303	Sum of GTIs [s]
ontime3	2330.3052221686	Sum of GTIs [s]
ontime6	2592.9309163988	Sum of GTIs [s]
ontime7	6197.063712135	Sum of GTIs [s]
l2events	1096675	Number of level 2 events

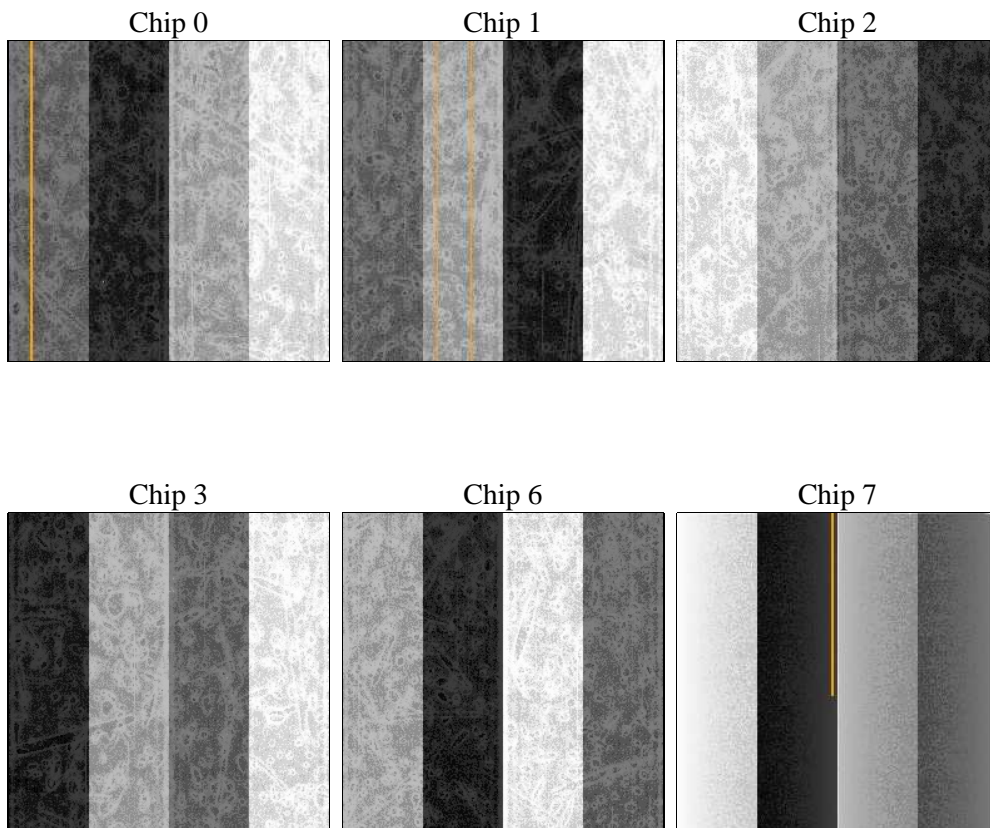
2 OBI

2.1 OBI

2.1.1 Images



2.1.2 Bias



2.1.3 Parameters

obi_num	0	Obi number	sched_exp_time	0.0	[s] Scheduled observation exposure time
ascdsver	8.4.5	Processing system revision	ontime	6197.063712135	Sum of GTIs [s]
caldbver	4.5.1.1	 	ontime0	2411.3306239843	Sum of GTIs [s]
date	2012-09-22T08:47:26	Date and time of file creation	ontime1	2486.0590255111	Sum of GTIs [s]
revision	3	Processing version of data	ontime2	2346.5099736303	Sum of GTIs [s]
			ontime3	2330.3052221686	Sum of GTIs [s]
			ontime6	2592.9309163988	Sum of GTIs [s]
			ontime7	6197.063712135	Sum of GTIs [s]
			l1events	1273661	Number of level 1 events

2.1.4 Events

	ccd 0	ccd 1	ccd 2	ccd 3	ccd 6	ccd 7		ccd 0	ccd 1	ccd 2	ccd 3	ccd 6	ccd 7
level 1 events	164924	169815	163035	162052	187013	426822	grade 0 events	80736	83206	79870	79858	91388	100853
rejected events	18436	18808	19193	19438	20735	33806		48%	48%	48%	49%	48%	23%
rejected %	11%	11%	11%	11%	11%	7%	grade 1 events	482	433	416	472	457	274
								0%	0%	0%	0%	0%	0%
							grade 2 events	25966	26699	25349	25103	28500	87648
								15%	15%	15%	15%	15%	20%
							grade 3 events	9230	9669	9103	9006	10181	40038
								5%	5%	5%	5%	5%	9%
							grade 4 events	9246	9659	9022	8921	10240	39572
								5%	5%	5%	5%	5%	9%
							grade 5 events	1257	1357	1220	1375	1549	7071
								0%	0%	0%	0%	0%	1%
							grade 6 events	21310	21991	20498	19726	26220	125103
								12%	12%	12%	12%	14%	29%
							grade 7 events	16697	16801	17557	17591	18478	26263
								10%	9%	10%	10%	9%	6%

2.2 Compared Parameters

Parameter	Planned	Actual	Parameter	Planned	Actual
Instrument	ACIS	ACIS	Obspar format version number	7	7
Detector	ACIS-012367	ACIS-012367	Obspar file type	PREDICTED	ACTUAL
Grating	NONE	NONE	Obspar update status	NONE	UPDATED
Data mode	FAINT	FAINT	On-chip summing requested	N	N
Observation mode	SECONDARY	SECONDARY	Subarray requested	NONE	NONE
[deg] Pointing RA	0	332.0315480857079	Alternating exposures requested	N	N
[deg] Pointing Dec	0	-49.97969569778644	[s] Primary exposure time	0.000000	3.2
[deg] Pointing Roll	0.0	12.29197530104929			
[mm] SIM focus pos	-0.782348	-0.6828225247311905			
[mm] SIM defocus	0	0.8505141146731063			
[mm] SIM translation stage pos	-233.592463	250.466033080201			
[mm] SIM translation stage offset	0	-0.01005468664627074			
[s] Observation start time (MET)	114219750.765	114219749.99665			
Observation start date	2001-08-14T23:42:31	2001-08-14T23:42:29			
[s] Observation end time (MET)	114229892.116	114229891.34705			
Observation end date	2001-08-15T02:31:32	2001-08-15T02:31:31			
Read mode	TIMED	TIMED			

2.3 Star Slots

2.4 FID Slots

A Summary

A.1 Status

V&V Scientist	Beth Sundheim
V&V Date (YYYY-MM-DD)	2012.09.25
V&V Edition	1
V&V Disposition and Status	OK
V&V Charge Time	6.197063712135

A.2 Comments