

# V&V Reference Report

## L2 ASCDS Version : 8.4.5

Observation 61494 - L2 Version 3  
Chandra X-Ray Center

L2 Processing Date : Sep 22 2012

## Contents

<b>1</b>	<b>Front</b>	<b>2</b>
<b>2</b>	<b>OBI</b>	<b>3</b>
2.1	OBI . . . . .	3
2.1.1	Images . . . . .	3
2.1.2	Bias . . . . .	3
2.1.3	Parameters . . . . .	4
2.1.4	Events . . . . .	4
2.2	Compared Parameters . . . . .	5
2.3	Star Slots . . . . .	6
2.4	FID Slots . . . . .	6
<b>A</b>	<b>Summary</b>	<b>7</b>
A.1	Status . . . . .	7
A.2	Comments . . . . .	7

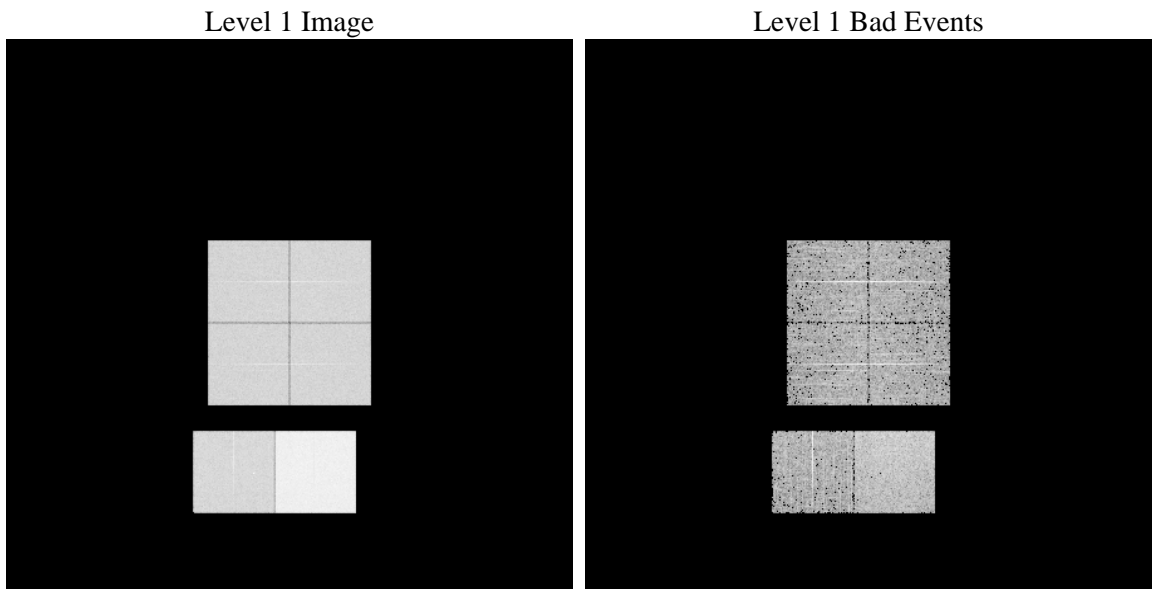
# 1 Front

seq_num	&#160	Sequence number
obs_id	61494	Observation id
title	ACIS-012367 diagnostics	Proposal title
observer	CHANDRA engineering request/realtime commanding	Principal investig
object	&#160	Source name
dtcycle	0	&#160
cycle	P	events from which exps? Prim/Second/Both
ra_targ	0.0	Observer's specified target RA [deg]
dec_targ	0.0	Observer's specified target Dec [deg]
ra_nom	239.62935848274	Nominal RA [deg]
dec_nom	-24.665736930289	Nominal Dec [deg]
roll_nom	258.44407139701	Nominal Roll [deg]
revision	3	Processing version of data
ontime	6905.786683619	Sum of GTIs [s]
livetime	6818.3414544655	Livetime [s]
ontime0	2708.7590632141	Sum of GTIs [s]
ontime1	2786.5846342295	Sum of GTIs [s]
ontime2	2660.2257326394	Sum of GTIs [s]
ontime3	2680.0745294392	Sum of GTIs [s]
ontime6	2890.3799842	Sum of GTIs [s]
ontime7	6905.786683619	Sum of GTIs [s]
l2events	1231247	Number of level 2 events

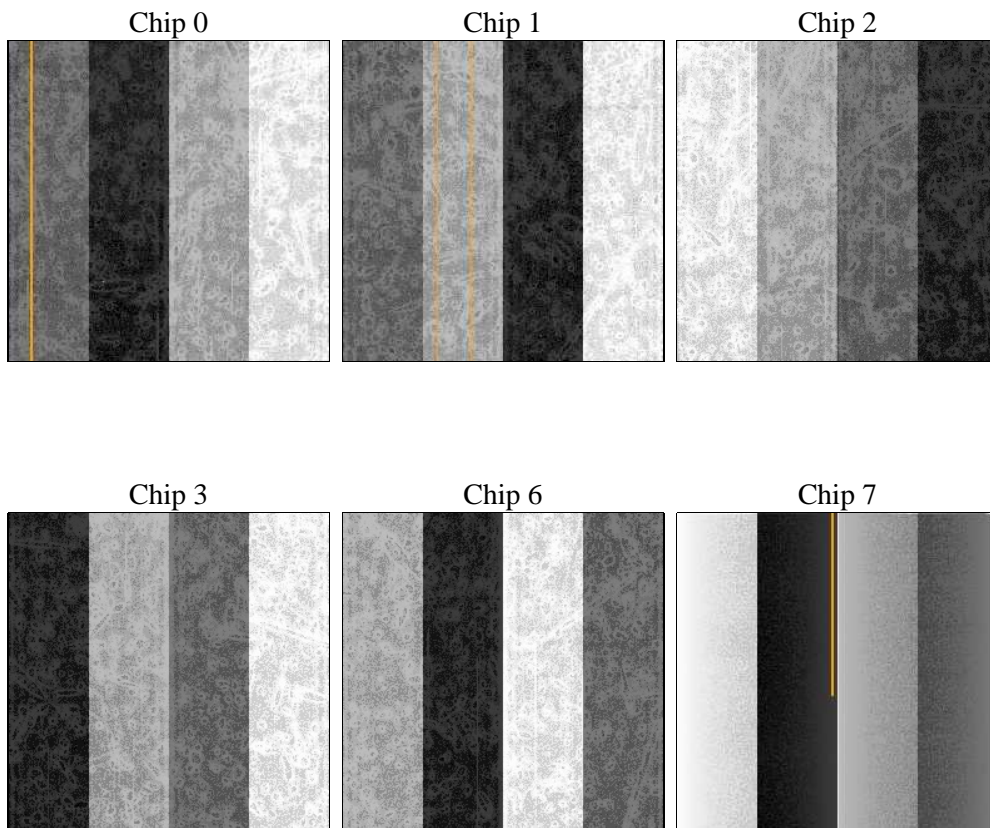
## 2 OBI

### 2.1 OBI

#### 2.1.1 Images



#### 2.1.2 Bias



### 2.1.3 Parameters

obi_num	0	Obi number	sched_exp_time	0.0	[s] Scheduled observation exposure time
ascdsver	8.4.5	Processing system revision	ontime	6905.786683619	Sum of GTIs [s]
caldsver	4.5.1.1	&#160	ontime0	2708.7590632141	Sum of GTIs [s]
date	2012-09-22T14:20:31	Date and time of file creation	ontime1	2786.5846342295	Sum of GTIs [s]
revision	3	Processing version of data	ontime2	2660.2257326394	Sum of GTIs [s]
			ontime3	2680.0745294392	Sum of GTIs [s]
			ontime6	2890.3799842	Sum of GTIs [s]
			ontime7	6905.786683619	Sum of GTIs [s]
			l1events	1424247	Number of level 1 events

### 2.1.4 Events

	ccd 0	ccd 1	ccd 2	ccd 3	ccd 6	ccd 7		ccd 0	ccd 1	ccd 2	ccd 3	ccd 6	ccd 7
level 1 events	184502	189593	184499	185842	206869	472942	grade 0 events	89924	93300	91107	92236	100154	112982
rejected events	20738	20133	21266	21018	22196	36180		48%	49%	49%	49%	48%	23%
rejected %	11%	10%	11%	11%	10%	7%	grade 1 events	484	460	456	488	527	257
								0%	0%	0%	0%	0%	0%
							grade 2 events	29045	29679	28514	28792	32273	96174
								15%	15%	15%	15%	15%	20%
							grade 3 events	10386	10786	10276	10187	11436	44636
								5%	5%	5%	5%	5%	9%
							grade 4 events	10463	10801	10091	10361	11372	43965
								5%	5%	5%	5%	5%	9%
							grade 5 events	1439	1590	1388	1533	1697	7730
								0%	0%	0%	0%	0%	1%
							grade 6 events	23946	24894	23245	23451	29438	139005
								12%	13%	12%	12%	14%	29%
							grade 7 events	18815	18083	19422	18794	19972	28193
								10%	9%	10%	10%	9%	5%

## 2.2 Compared Parameters

Parameter	Planned	Actual	Parameter	Planned	Actual
Instrument	ACIS	ACIS	Obspar format version number	7	7
Detector	ACIS-012367	ACIS-012367	Obspar file type	PREDICTED	ACTUAL
Grating	NONE	NONE	Obspar update status	NONE	UPDATED
Data mode	FAINT	FAINT	On-chip summing requested	N	N
Observation mode	SECONDARY	SECONDARY	Subarray requested	NONE	NONE
[deg] Pointing RA	0	239.6293584827372	Alternating exposures requested	N	N
[deg] Pointing Dec	0	-24.66573693028865	[s] Primary exposure time	3.2	3.2
[deg] Pointing Roll	0.0	258.444071397011			
[mm] SIM focus pos	-0.782348	-0.6828225247311905			
[mm] SIM defocus	0	0.8505141146731063			
[mm] SIM translation stage pos	-233.592463	250.466033080201			
[mm] SIM translation stage offset	0	-0.01005468664627074			
[s] Observation start time (MET)	115136865.451276	115136864.68281			
Observation start date	2001-08-25T14:27:45	2001-08-25T14:27:44			
[s] Observation end time (MET)	115169480.952563	115169480.1841			
Observation end date	2001-08-25T23:31:21	2001-08-25T23:31:20			
Read mode	TIMED	TIMED			

## 2.3 Star Slots

## 2.4 FID Slots

## A Summary

### A.1 Status

V&V Scientist	Beth Sundheim
V&V Date (YYYY-MM-DD)	2012.09.25
V&V Edition	1
V&V Disposition and Status	OK
V&V Charge Time	6.905786683619

### A.2 Comments