

V&V Reference Report

L2 ASCDS Version : 7.6.9

Observation 61494 - L2 Version 001
Chandra X-Ray Center

L2 Processing Date : Dec 22 2006

Contents

1	Front	2
2	OBI	3
2.1	OBI	3
2.1.1	Images	3
2.1.2	Bias	3
2.1.3	Parameters	4
2.1.4	Events	4
2.2	Compared Parameters	5
2.3	Aspect	6
2.4	Star Slots	8
2.5	FID Slots	8
A	Summary	9
A.1	Status	9
A.2	Comments	9

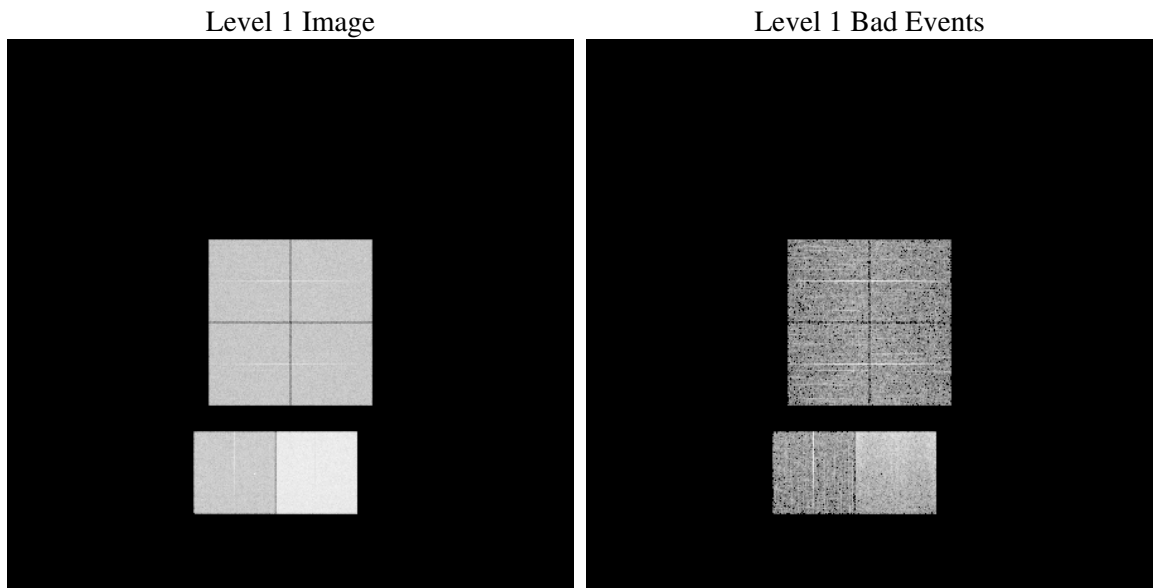
1 Front

seq_num	
obs_id	61494
title	ACIS-012367 diagnostics
observer	CHANDRA engineering request/realtime commanding
object	
dtcycle	0
cycle	P
ra_targ	0.0
dec_targ	0.0
ra_nom	239.62935848669
dec_nom	-24.665736940019
roll_nom	258.44407139687
revision	2
ontime	6904.186683625
livetime	6816.7617146348
ontime0	2707.15906322
ontime1	2784.9846342355
ontime2	2658.6257326454
ontime3	2680.0745294541
ontime6	2888.779984206
ontime7	6904.186683625
l2events	1217536

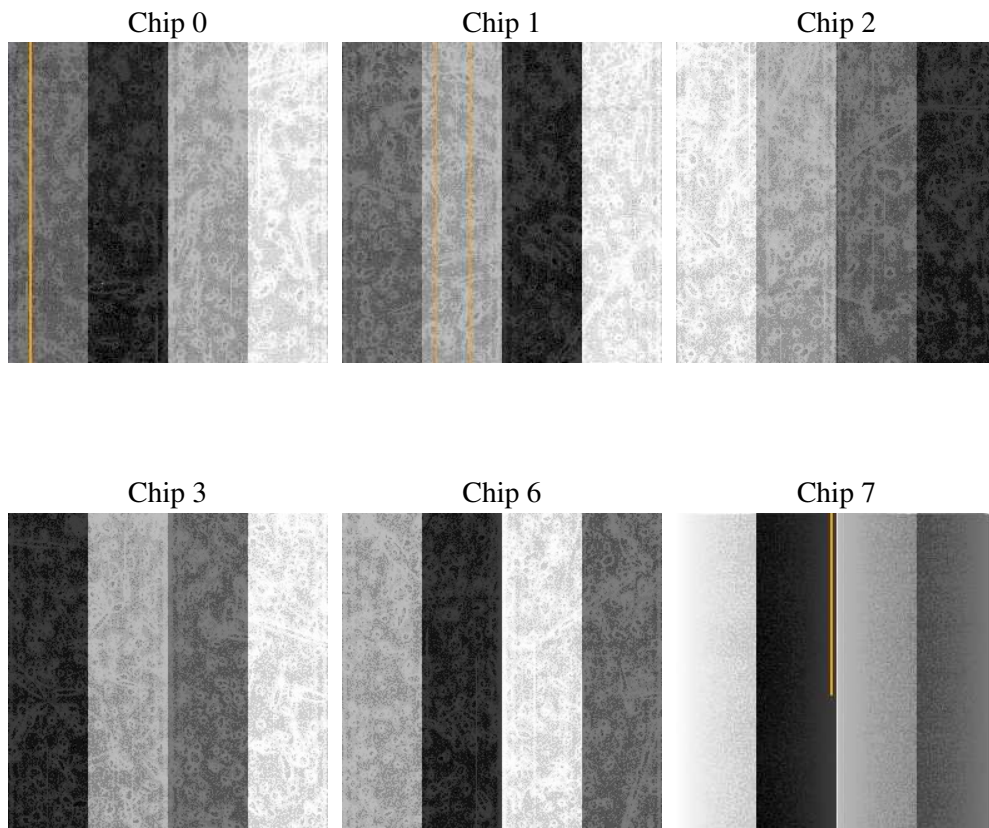
2 OBI

2.1 OBI

2.1.1 Images



2.1.2 Bias



2.1.3 Parameters

obi_num	0
ascdsver	7.6.9
caldbver	3.2.4
date	2006-12-22T04:17:30
revision	2

sched_exp_time	0.0
ontime	6906.5749333352
ontime0	2709.5062729269
ontime1	2787.290803954
ontime2	2660.8908623606
ontime3	2683.5780128092
ontime6	2891.0040739179
ontime7	6906.5749333352
l1events	1424247

2.1.4 Events

	ccd 0	ccd 1	ccd 2	ccd 3	ccd 6	ccd 7
level 1 events	184502	189593	184499	185842	206869	472942
rejected events	20930	20327	21500	21004	22404	49236
rejected %	11%	10%	11%	11%	10%	10%

	ccd 0	ccd 1	ccd 2	ccd 3	ccd 6	ccd 7
grade 0 events	89926	93306	91117	92240	100161	82455
	48%	49%	49%	49%	48%	17%
grade 1 events	484	460	456	489	528	155
	0%	0%	0%	0%	0%	0%
grade 2 events	29043	29673	28504	28788	32266	124316
	15%	15%	15%	15%	15%	26%
grade 3 events	10387	10787	10277	10187	11438	32972
	5%	5%	5%	5%	5%	6%
grade 4 events	10465	10801	10094	10363	11373	32455
	5%	5%	5%	5%	5%	6%
grade 5 events	1439	1589	1388	1532	1697	7135
	0%	0%	0%	0%	0%	1%
grade 6 events	23943	24895	23241	23449	29436	151722
	12%	13%	12%	12%	14%	32%
grade 7 events	18815	18082	19422	18794	19970	41732
	10%	9%	10%	10%	9%	8%

2.2 Compared Parameters

Parameter	Planned	Actual	Parameter	Planned	Actual
Instrument	ACIS	ACIS	Obspar format version number	6	6
Detector	ACIS-012367	ACIS-012367	Obspar file type	PREDICTED	ACTUAL
Grating	NONE	NONE	Obspar update status	NONE	UPDATED
Data mode	FAINT	FAINT	On-chip summing requested	N	N
Observation mode	SECONDARY	SECONDARY	Subarray requested	NONE	NONE
Pointing RA	0	239.6293584866918	Alternating exposures requested	N	N
Pointing Dec	0	-24.66573694001937	Primary exposure time	3.2	3.2
Pointing Roll	0.0	258.4440713968697			
SIM focus pos (mm)	-0.782348	-0.6828225247311905			
SIM defocus (mm)	0	0.8505141146731063			
SIM translation stage pos (mm)	-233.592463	250.466033080201			
SIM translation stage offset (mm)	0	-0.01005468664627074			
Observation start time	115136865.451276	115136864.68281			
Observation start date	2001-08-25T14:27:45	2001-08-25T14:27:44			
Observation end time	115169480.952563	115169480.1841			
Observation end date	2001-08-25T23:31:21	2001-08-25T23:31:20			
Read mode	TIMED	TIMED			

2.3 Aspect

2.4 Star Slots

2.5 FID Slots

A Summary

A.1 Status

V&V Scientist	Jen Lauer
V&V Date (YYYY-MM-DD)	2006.12.22
V&V Edition	1
V&V Disposition and Status	OK
V&V Charge Time	6.90418668

A.2 Comments