

# V&V Reference Report

## L2 ASCDS Version : 8.4.5

Observation 61444 - L2 Version 3  
Chandra X-Ray Center

L2 Processing Date : Sep 25 2012

## Contents

<b>1</b>	<b>Front</b>	<b>2</b>
<b>2</b>	<b>OBI</b>	<b>3</b>
2.1	OBI . . . . .	3
2.1.1	Images . . . . .	3
2.1.2	Bias . . . . .	3
2.1.3	Parameters . . . . .	4
2.1.4	Events . . . . .	4
2.2	Compared Parameters . . . . .	5
2.3	Star Slots . . . . .	6
2.4	FID Slots . . . . .	6
<b>A</b>	<b>Summary</b>	<b>7</b>
A.1	Status . . . . .	7
A.2	Comments . . . . .	7

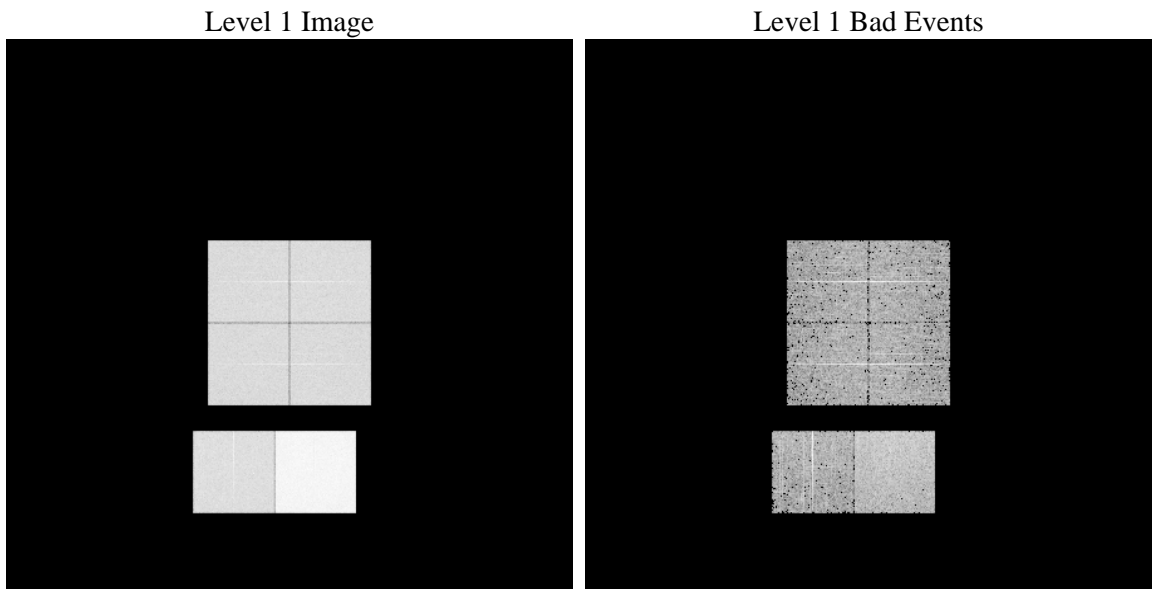
# 1 Front

seq_num	&#160	Sequence number
obs_id	61444	Observation id
title	ACIS-012367 diagnostics	Proposal title
observer	CHANDRA engineering request/realtime commanding	Principal investig
object	&#160	Source name
dtcycle	0	&#160
cycle	P	events from which exps? Prim/Second/Both
ra_targ	0.0	Observer's specified target RA [deg]
dec_targ	0.0	Observer's specified target Dec [deg]
ra_nom	320.0525699692	Nominal RA [deg]
dec_nom	-60.011367803031	Nominal Dec [deg]
roll_nom	303.80411737059	Nominal Roll [deg]
revision	3	Processing version of data
ontime	7814.9429000318	Sum of GTIs [s]
livetime	7715.9853874379	Livetime [s]
ontime0	3094.9014101177	Sum of GTIs [s]
ontime1	3147.9344440401	Sum of GTIs [s]
ontime2	2963.1957525313	Sum of GTIs [s]
ontime3	2969.6774439961	Sum of GTIs [s]
ontime6	3283.0041918308	Sum of GTIs [s]
ontime7	7814.9429000318	Sum of GTIs [s]
l2events	1335946	Number of level 2 events

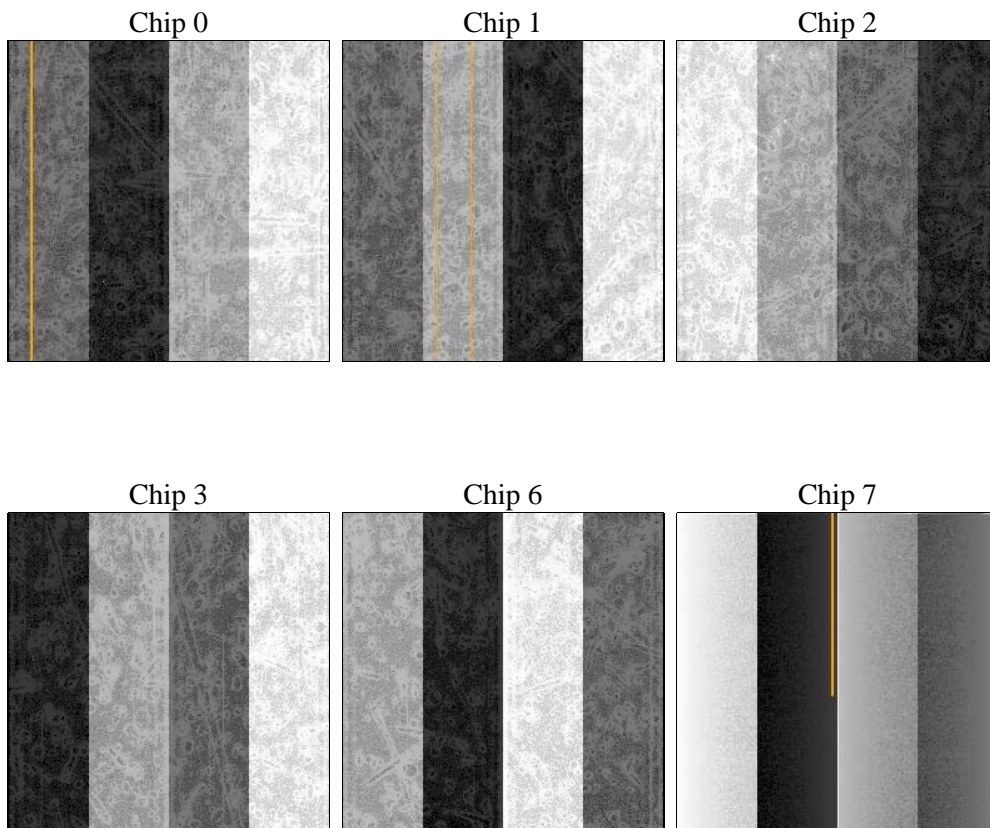
## 2 OBI

### 2.1 OBI

#### 2.1.1 Images



#### 2.1.2 Bias



### 2.1.3 Parameters

obi_num	0	Obi number	sched_exp_time	0.0	[s] Scheduled observation exposure time
ascdsver	8.4.5	Processing system revision	ontime	7814.9429000318	Sum of GTIs [s]
caldsver	4.5.1.1	&#160	ontime0	3094.9014101177	Sum of GTIs [s]
date	2012-09-25T07:15:09	Date and time of file creation	ontime1	3147.9344440401	Sum of GTIs [s]
revision	3	Processing version of data	ontime2	2963.1957525313	Sum of GTIs [s]
			ontime3	2969.6774439961	Sum of GTIs [s]
			ontime6	3283.0041918308	Sum of GTIs [s]
			ontime7	7814.9429000318	Sum of GTIs [s]
			l1events	1544127	Number of level 1 events

### 2.1.4 Events

	ccd 0	ccd 1	ccd 2	ccd 3	ccd 6	ccd 7		ccd 0	ccd 1	ccd 2	ccd 3	ccd 6	ccd 7
level 1 events	202554	206325	196468	198149	226589	514042	grade 0 events	99944	101549	97397	98292	110461	120168
rejected events	21077	22308	21714	23015	24472	39922		49%	49%	49%	49%	48%	23%
rejected %	10%	10%	11%	11%	10%	7%	grade 1 events	526	512	472	497	471	292
								0%	0%	0%	0%	0%	0%
							grade 2 events	32163	32517	31005	30911	34777	105194
								15%	15%	15%	15%	15%	20%
							grade 3 events	11400	11791	10883	11055	12476	48192
								5%	5%	5%	5%	5%	9%
							grade 4 events	11532	11506	10989	10936	12357	47945
								5%	5%	5%	5%	5%	9%
							grade 5 events	1638	1642	1500	1602	1841	8438
								0%	0%	0%	0%	0%	1%
							grade 6 events	26438	26853	24652	24143	32046	152786
								13%	13%	12%	12%	14%	29%
							grade 7 events	18913	19955	19570	20713	22160	31027
								9%	9%	9%	10%	9%	6%

## 2.2 Compared Parameters

Parameter	Planned	Actual
Instrument	ACIS	ACIS
Detector	ACIS-012367	ACIS-012367
Grating	NONE	NONE
Data mode	FAINT	FAINT
Observation mode	SECONDARY	SECONDARY
[deg] Pointing RA	0	320.0525699691957
[deg] Pointing Dec	0	-60.01136780303065
[deg] Pointing Roll	0.0	303.8041173705912
[mm] SIM focus pos	-0.782348	-1.428180813131781
[mm] SIM defocus	0	0.1051558262725154
[mm] SIM translation stage pos	-233.592463	250.466033080201
[mm] SIM translation stage offset	0	-0.01005468664627074
[s] Observation start time (MET)	119058144.556488	119058143.78801
Observation start date	2001-10-09T23:42:25	2001-10-09T23:42:23
[s] Observation end time (MET)	119077221.857245	119077221.08877
Observation end date	2001-10-10T05:00:22	2001-10-10T05:00:21
Read mode	TIMED	TIMED

Parameter	Planned	Actual
Obspar format version number	7	7
Obspar file type	PREDICTED	ACTUAL
Obspar update status	NONE	UPDATED
On-chip summing requested	N	N
Subarray requested	NONE	NONE
Alternating exposures requested	N	N
[s] Primary exposure time	3.2	3.2

## **2.3 Star Slots**

## **2.4 FID Slots**

## A Summary

### A.1 Status

V&V Scientist	Beth Sundheim
V&V Date (YYYY-MM-DD)	2012.09.27
V&V Edition	1
V&V Disposition and Status	OK
V&V Charge Time	7.8149429000318

### A.2 Comments