

V&V Reference Report

L2 ASCDS Version : 7.6.9

Observation 61444 - L2 Version 001
Chandra X-Ray Center

L2 Processing Date : Jan 5 2007

Contents

1	Front	2
2	OBI	3
2.1	OBI	3
2.1.1	Images	3
2.1.2	Bias	3
2.1.3	Parameters	4
2.1.4	Events	4
2.2	Compared Parameters	5
2.3	Aspect	6
2.4	Star Slots	8
2.5	FID Slots	8
A	Summary	9
A.1	Status	9
A.2	Comments	9

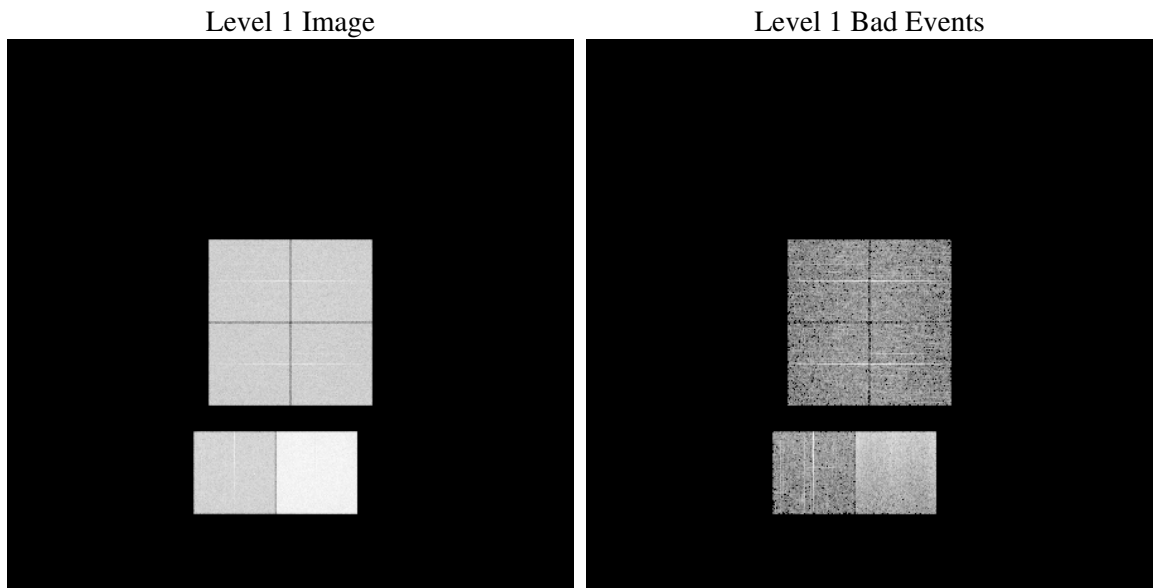
1 Front

seq_num	
obs_id	61444
title	ACIS-012367 diagnostics
observer	CHANDRA engineering request/realtime commanding
object	
dtcycle	0
cycle	P
ra_targ	0.0
dec_targ	0.0
ra_nom	320.0525699692
dec_nom	-60.011367803031
roll_nom	303.80411737059
revision	2
ontime	7814.9429000467
livetime	7715.9853874526
ontime0	3093.3014101237
ontime1	3147.934444055
ontime2	2963.1957525462
ontime3	2969.677444011
ontime6	3281.4041918367
ontime7	7814.9429000467
l2events	1319246

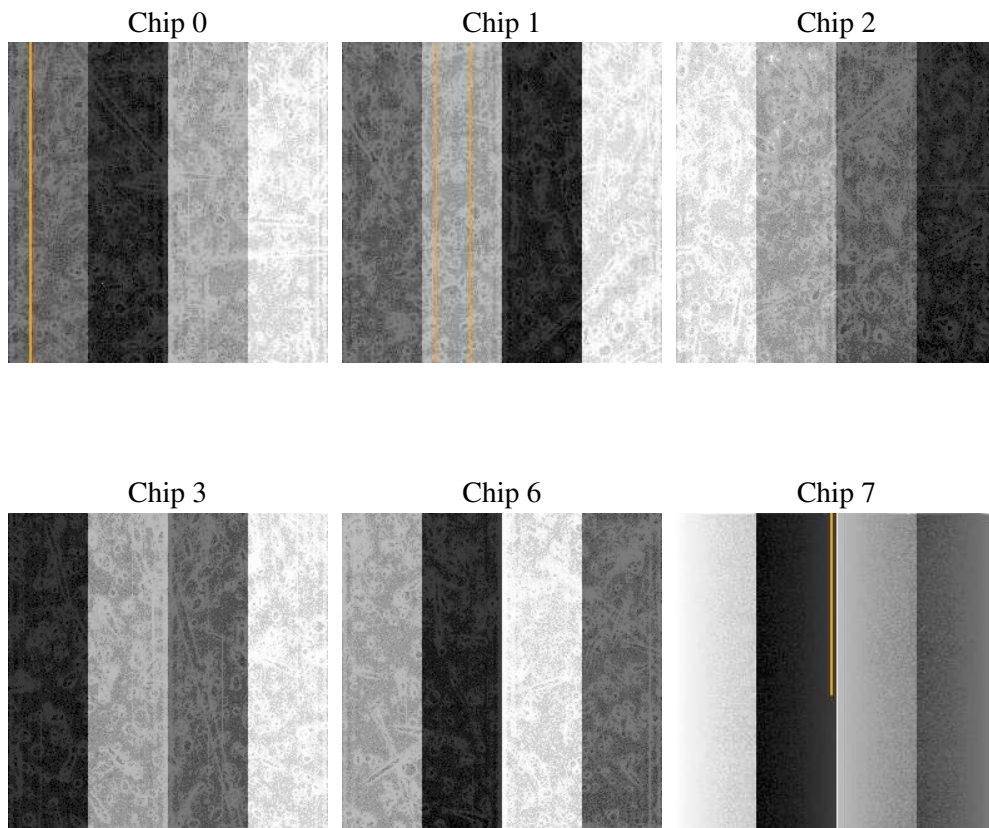
2 OBI

2.1 OBI

2.1.1 Images



2.1.2 Bias



2.1.3 Parameters

obi_num	0
ascdsver	7.6.9
caldsver	3.2.4
date	2007-01-05T19:56:04
revision	2

sched_exp_time	0.0
ontime	7817.2954006791
ontime0	3095.1895140857
ontime1	3150.2869446874
ontime2	2965.5482531786
ontime3	2972.0299446434
ontime6	3283.1691758037
ontime7	7817.2954006791
l1events	1544127

2.1.4 Events

	ccd 0	ccd 1	ccd 2	ccd 3	ccd 6	ccd 7
level 1 events	202554	206325	196468	198149	226589	514042
rejected events	21297	22304	21711	23001	24683	56334
rejected %	10%	10%	11%	11%	10%	10%

	ccd 0	ccd 1	ccd 2	ccd 3	ccd 6	ccd 7
grade 0 events	99879	101496	97347	98249	110373	84101
	49%	49%	49%	49%	48%	16%
grade 1 events	522	510	470	493	469	181
	0%	0%	0%	0%	0%	0%
grade 2 events	32229	32570	31056	30955	34863	138452
	15%	15%	15%	15%	15%	26%
grade 3 events	11387	11780	10867	11043	12456	34236
	5%	5%	5%	5%	5%	6%
grade 4 events	11523	11491	10973	10923	12338	34132
	5%	5%	5%	5%	5%	6%
grade 5 events	1638	1637	1493	1603	1840	7964
	0%	0%	0%	0%	0%	1%
grade 6 events	26455	26869	24676	24158	32067	166975
	13%	13%	12%	12%	14%	32%
grade 7 events	18921	19972	19586	20725	22183	48001
	9%	9%	9%	10%	9%	9%

2.2 Compared Parameters

Parameter	Planned	Actual	Parameter	Planned	Actual
Instrument	ACIS	ACIS	Obspar format version number	6	6
Detector	ACIS-012367	ACIS-012367	Obspar file type	PREDICTED	ACTUAL
Grating	NONE	NONE	Obspar update status	NONE	UPDATED
Data mode	FAINT	FAINT	On-chip summing requested	N	N
Observation mode	SECONDARY	SECONDARY	Subarray requested	NONE	NONE
Pointing RA	0	320.0525699691957	Alternating exposures requested	N	N
Pointing Dec	0	-60.01136780303065	Primary exposure time	3.2	3.2
Pointing Roll	0.0	303.8041173705912			
SIM focus pos (mm)	-0.782348	-1.428180813131781			
SIM defocus (mm)	0	0.1051558262725154			
SIM translation stage pos (mm)	-233.592463	250.466033080201			
SIM translation stage offset (mm)	0	-0.01005468664627074			
Observation start time	119058144.556488	119058143.78801			
Observation start date	2001-10-09T23:42:25	2001-10-09T23:42:23			
Observation end time	119077221.857245	119077221.08877			
Observation end date	2001-10-10T05:00:22	2001-10-10T05:00:21			
Read mode	TIMED	TIMED			

2.3 Aspect

2.4 Star Slots

2.5 FID Slots

A Summary

A.1 Status

V&V Scientist	Beth Sundheim
V&V Date (YYYY-MM-DD)	2007.01.05
V&V Edition	1
V&V Disposition and Status	OK
V&V Charge Time	7.8149429

A.2 Comments