

# V&V Reference Report

## L2 ASCDS Version : 7.6.10

Observation 61424 - L2 Version 001  
Chandra X-Ray Center

L2 Processing Date : Jan 13 2007

## Contents

<b>1</b>	<b>Front</b>	<b>2</b>
<b>2</b>	<b>OBI</b>	<b>3</b>
2.1	OBI . . . . .	3
2.1.1	Images . . . . .	3
2.1.2	Bias . . . . .	3
2.1.3	Parameters . . . . .	4
2.1.4	Events . . . . .	4
2.2	Compared Parameters . . . . .	5
2.3	Star Slots . . . . .	6
2.4	FID Slots . . . . .	6
<b>A</b>	<b>Summary</b>	<b>7</b>
A.1	Status . . . . .	7
A.2	Comments . . . . .	7

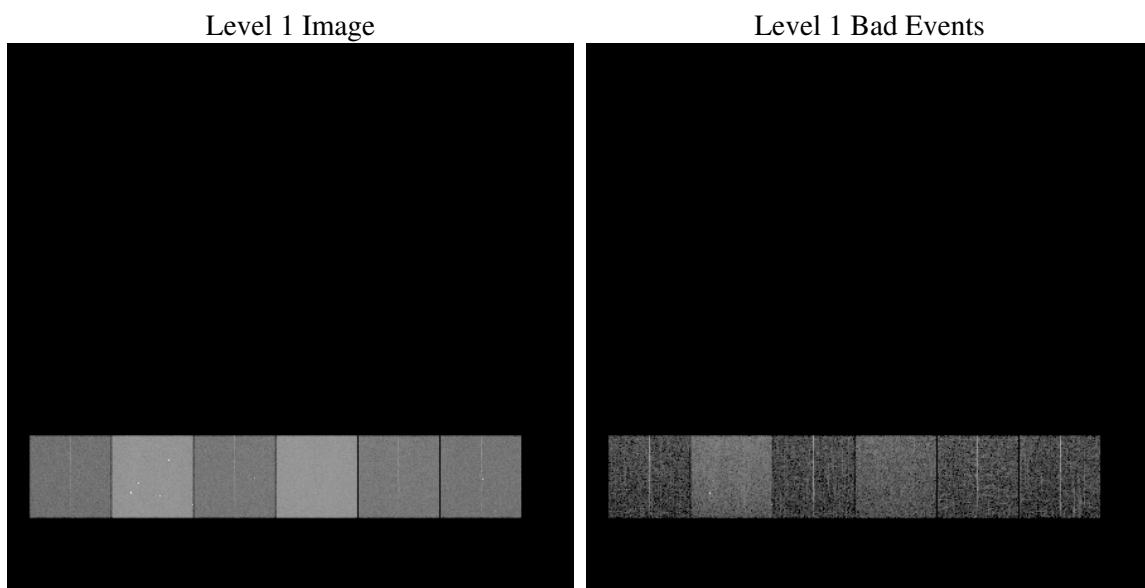
# 1 Front

seq_num	&#160
obs_id	61424
title	ACIS-456789 diagnostics
observer	CHANDRA engineering request/realtime commanding
object	&#160
dtcycle	0
cycle	P
ra_targ	0.0
dec_targ	0.0
ra_nom	321.04693157591
dec_nom	-60.016405013598
roll_nom	292.33985275024
revision	2
ontime	6520.1320223957
livetime	6437.570184776
ontime4	2507.90683043
ontime5	6967.4247600138
ontime6	2728.2565099299
ontime7	6520.1320223957
ontime8	2815.8462410271
ontime9	2634.1432700157
l2events	1321281

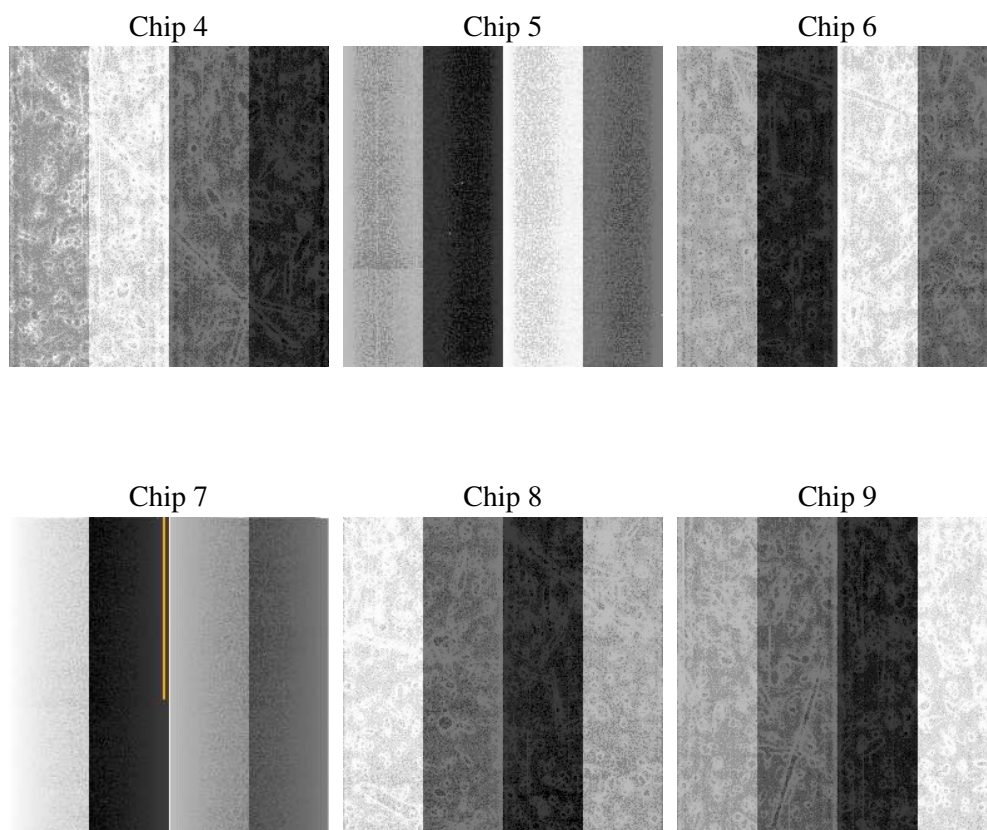
## 2 OBI

### 2.1 OBI

#### 2.1.1 Images



#### 2.1.2 Bias



### 2.1.3 Parameters

obi_num	1
ascdsver	7.6.10
caldsver	3.3.0
date	2007-01-13T17:17:22
revision	2

sched_exp_time	0.0
ontime	6520.1320223957
ontime4	2507.90683043
ontime5	6967.4247600138
ontime6	2728.2565099299
ontime7	6520.1320223957
ontime8	2815.8462410271
ontime9	2634.1432700157
l1events	1544351

### 2.1.4 Events

	ccd 4	ccd 5	ccd 6	ccd 7	ccd 8	ccd 9
level 1 events	158585	412796	185820	421017	192634	173499
rejected events	19231	48421	20005	32237	21648	19619
rejected %	12%	11%	10%	7%	11%	11%

	ccd 4	ccd 5	ccd 6	ccd 7	ccd 8	ccd 9
grade 0 events	78641	87886	90453	98480	94143	84104
	49%	21%	48%	23%	48%	48%
grade 1 events	420	337	434	275	433	448
	0%	0%	0%	0%	0%	0%
grade 2 events	24808	132256	28711	85801	30156	27754
	15%	32%	15%	20%	15%	15%
grade 3 events	8558	22235	10252	39683	10778	9593
	5%	5%	5%	9%	5%	5%
grade 4 events	8361	21945	10338	39015	10699	9360
	5%	5%	5%	9%	5%	5%
grade 5 events	1328	9040	1433	6714	1662	1468
	0%	2%	0%	1%	0%	0%
grade 6 events	18986	100053	26061	125801	25210	23069
	11%	24%	14%	29%	13%	13%
grade 7 events	17483	39044	18138	25248	19553	17703
	11%	9%	9%	5%	10%	10%

## 2.2 Compared Parameters

Parameter	Planned	Actual	Parameter	Planned	Actual
Instrument	ACIS	ACIS	Obspar format version number	6	6
Detector	ACIS-456789	ACIS-456789	Obspar file type	PREDICTED	ACTUAL
Grating	NONE	NONE	Obspar update status	NONE	UPDATED
Data mode	FAINT	FAINT	On-chip summing requested	N	N
Observation mode	SECONDARY	SECONDARY	Subarray requested	NONE	NONE
Pointing RA	0	321.046931575915	Alternating exposures requested	N	N
Pointing Dec	0	-60.01640501359799	Primary exposure time	0.000000	3.2
Pointing Roll	0.0	292.3398527502356			
SIM focus pos (mm)	-0.684267	-0.6828225247311905			
SIM defocus (mm)	0	0.8505141146731063			
SIM translation stage pos (mm)	-190.132523	250.466033080201			
SIM translation stage offset (mm)	0	-0.01005468664627074			
Observation start time	120650742.47	120650741.70124			
Observation start date	2001-10-28T10:05:42	2001-10-28T10:05:41			
Observation end time	120672052.221	120672051.45209			
Observation end date	2001-10-28T16:00:52	2001-10-28T16:00:51			
Read mode	TIMED	TIMED			

## **2.3 Star Slots**

## **2.4 FID Slots**

# A Summary

## A.1 Status

V&V Scientist	Jen Lauer
V&V Date (YYYY-MM-DD)	2007.01.16
V&V Edition	1
V&V Disposition and Status	OK
V&V Charge Time	6.52013202

## A.2 Comments

The ACIS focal plane temperature was above calibration limits for the entire observation.