

# V&V Reference Report

## L2 ASCDS Version : 8.4.5

Observation 61404 - L2 Version 3  
Chandra X-Ray Center

L2 Processing Date : Sep 27 2012

## Contents

<b>1</b>	<b>Front</b>	<b>2</b>
<b>2</b>	<b>OBI</b>	<b>3</b>
2.1	OBI . . . . .	3
2.1.1	Images . . . . .	3
2.1.2	Bias . . . . .	3
2.1.3	Parameters . . . . .	4
2.1.4	Events . . . . .	4
2.2	Compared Parameters . . . . .	5
2.3	Star Slots . . . . .	6
2.4	FID Slots . . . . .	6
<b>A</b>	<b>Summary</b>	<b>7</b>
A.1	Status . . . . .	7
A.2	Comments . . . . .	7

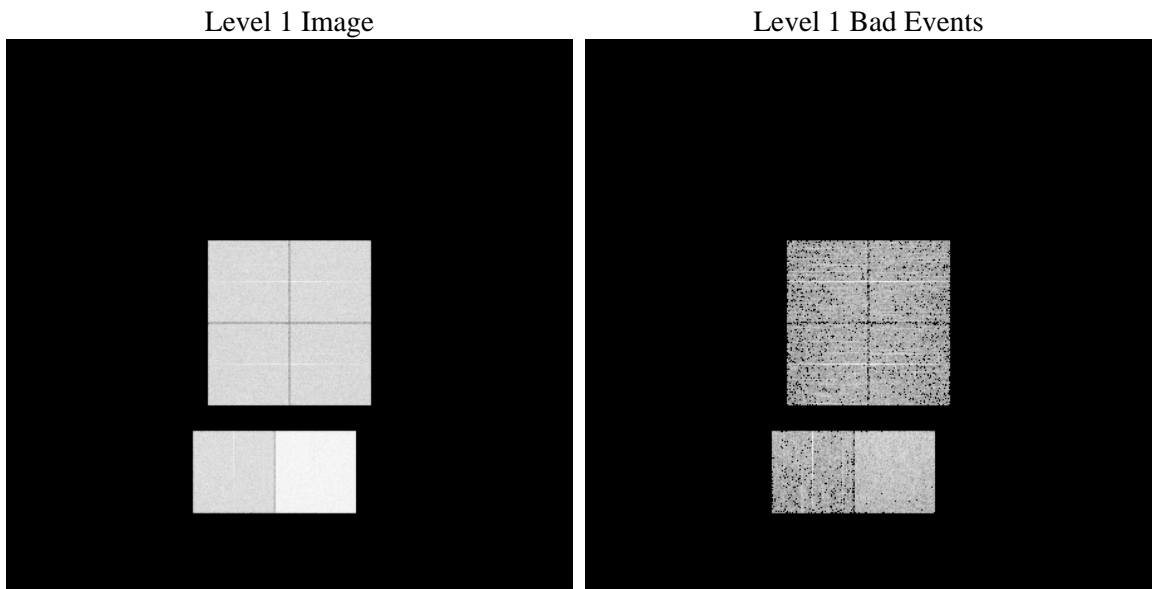
# 1 Front

seq_num	&#160	Sequence number
obs_id	61404	Observation id
title	ACIS-012367 diagnostics	Proposal title
observer	CHANDRA engineering request/realtime commanding	Principal investig
object	&#160	Source name
dtcycle	0	&#160
cycle	P	events from which exps? Prim/Second/Both
ra_targ	0.0	Observer's specified target RA [deg]
dec_targ	0.0	Observer's specified target Dec [deg]
ra_nom	335.02406368712	Nominal RA [deg]
dec_nom	-23.016662245413	Nominal Dec [deg]
roll_nom	292.20437218778	Nominal Roll [deg]
revision	3	Processing version of data
ontime	5660.4902810156	Sum of GTIs [s]
livetime	5588.8137447394	Livetime [s]
ontime0	2202.408696577	Sum of GTIs [s]
ontime1	2236.8136400133	Sum of GTIs [s]
ontime2	2137.6704751551	Sum of GTIs [s]
ontime3	2127.7833048403	Sum of GTIs [s]
ontime6	2319.2089273334	Sum of GTIs [s]
ontime7	5660.4902810156	Sum of GTIs [s]
l2events	933042	Number of level 2 events

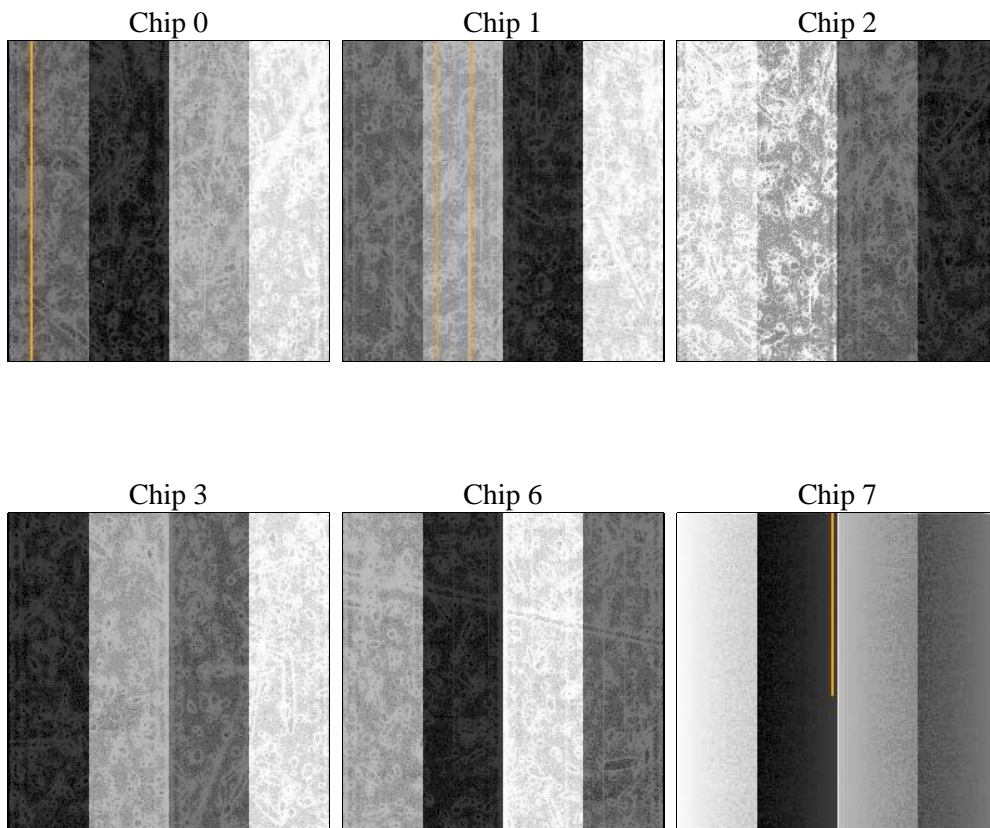
## 2 OBI

### 2.1 OBI

#### 2.1.1 Images



#### 2.1.2 Bias



### 2.1.3 Parameters

obi_num	0	Obi number	sched_exp_time	0.0	[s] Scheduled observation exposure time
ascdsver	8.4.5	Processing system revision	ontime	5660.4902810156	Sum of GTIs [s]
caldsver	4.5.1.1	&#160	ontime0	2202.408696577	Sum of GTIs [s]
date	2012-09-27T08:20:25	Date and time of file creation	ontime1	2236.8136400133	Sum of GTIs [s]
revision	3	Processing version of data	ontime2	2137.6704751551	Sum of GTIs [s]
			ontime3	2127.7833048403	Sum of GTIs [s]
			ontime6	2319.2089273334	Sum of GTIs [s]
			ontime7	5660.4902810156	Sum of GTIs [s]
			l1events	1088834	Number of level 1 events

### 2.1.4 Events

	ccd 0	ccd 1	ccd 2	ccd 3	ccd 6	ccd 7		ccd 0	ccd 1	ccd 2	ccd 3	ccd 6	ccd 7
level 1 events	142277	144748	139647	139090	156086	366986	grade 0 events	68782	69947	67999	68096	75179	84897
rejected events	16897	17442	16879	16677	17685	31317		48%	48%	48%	48%	48%	23%
rejected %	11%	12%	12%	11%	11%	8%	grade 1 events	344	359	357	403	408	239
								0%	0%	0%	0%	0%	0%
							grade 2 events	22341	22594	21780	21628	24024	73867
								15%	15%	15%	15%	15%	20%
							grade 3 events	8025	8161	7658	7862	8681	34028
								5%	5%	5%	5%	5%	9%
							grade 4 events	7891	8128	7708	7799	8543	33801
								5%	5%	5%	5%	5%	9%
							grade 5 events	1151	1204	1088	1158	1323	6423
								0%	0%	0%	0%	0%	1%
							grade 6 events	18341	18476	17623	17028	21974	109076
								12%	12%	12%	12%	14%	29%
							grade 7 events	15402	15879	15434	15116	15954	24655
								10%	10%	11%	10%	10%	6%

## 2.2 Compared Parameters

Parameter	Planned	Actual	Parameter	Planned	Actual
Instrument	ACIS	ACIS	Obspar format version number	7	7
Detector	ACIS-012367	ACIS-012367	Obspar file type	PREDICTED	ACTUAL
Grating	NONE	NONE	Obspar update status	NONE	UPDATED
Data mode	FAINT	FAINT	On-chip summing requested	N	N
Observation mode	SECONDARY	SECONDARY	Subarray requested	NONE	NONE
[deg] Pointing RA	0	335.0240636871194	Alternating exposures requested	N	N
[deg] Pointing Dec	0	-23.01666224541301	[s] Primary exposure time	3.2	3.2
[deg] Pointing Roll	0.0	292.2043721877754			
[mm] SIM focus pos	-0.782348	-0.6828225247311905			
[mm] SIM defocus	0	0.8505141146731063			
[mm] SIM translation stage pos	-233.592463	250.466033080201			
[mm] SIM translation stage offset	0	-0.01005468664627074			
[s] Observation start time (MET)	122492275.993141	122492275.22464			
Observation start date	2001-11-18T17:37:56	2001-11-18T17:37:55			
[s] Observation end time (MET)	122525641.794479	122525641.02597			
Observation end date	2001-11-19T02:54:02	2001-11-19T02:54:01			
Read mode	TIMED	TIMED			

## 2.3 Star Slots

## 2.4 FID Slots

## A Summary

### A.1 Status

V&V Scientist	Beth Sundheim
V&V Date (YYYY-MM-DD)	2012.09.27
V&V Edition	1
V&V Disposition and Status	OK
V&V Charge Time	5.6604902810156

### A.2 Comments