

V&V Reference Report

L2 ASCDS Version : 7.6.8.1

Observation 61264 - L2 Version 001
Chandra X-Ray Center

L2 Processing Date : Sep 8 2006

Contents

1	Front	2
2	OBI	3
2.1	OBI	3
2.1.1	Images	3
2.1.2	Bias	3
2.1.3	Parameters	4
2.1.4	Events	4
2.2	Compared Parameters	5
2.3	Aspect	6
2.4	Star Slots	8
2.5	FID Slots	8
A	Summary	9
A.1	Status	9
A.2	Comments	9

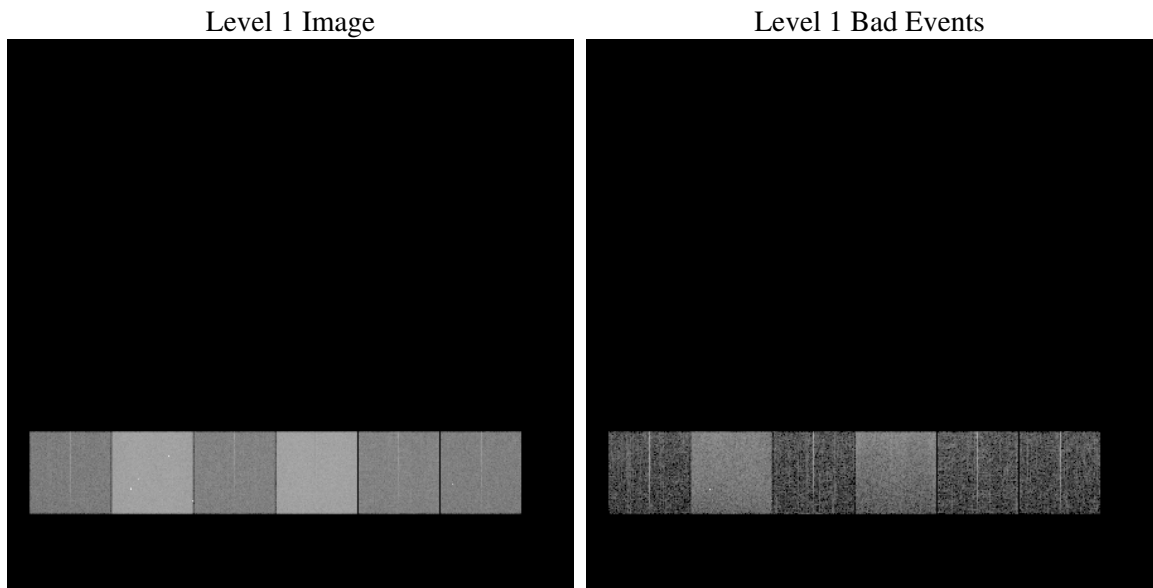
1 Front

seq_num	
obs_id	61264
title	ACIS-456789 diagnostics
observer	CHANDRA engineering request/realtime commanding
object	
dtcycle	0
cycle	P
ra_targ	0.0
dec_targ	0.0
ra_nom	150.02761949936
dec_nom	-18.01139131104
roll_nom	303.78898196405
revision	2
ontime	6711.126415804
livetime	6626.1460921719
ontime4	2455.8301224113
ontime5	7252.408310473
ontime6	2689.1435430348
ontime7	6711.126415804
ontime8	2718.3949830532
ontime9	2556.1382020861
l2events	1200034

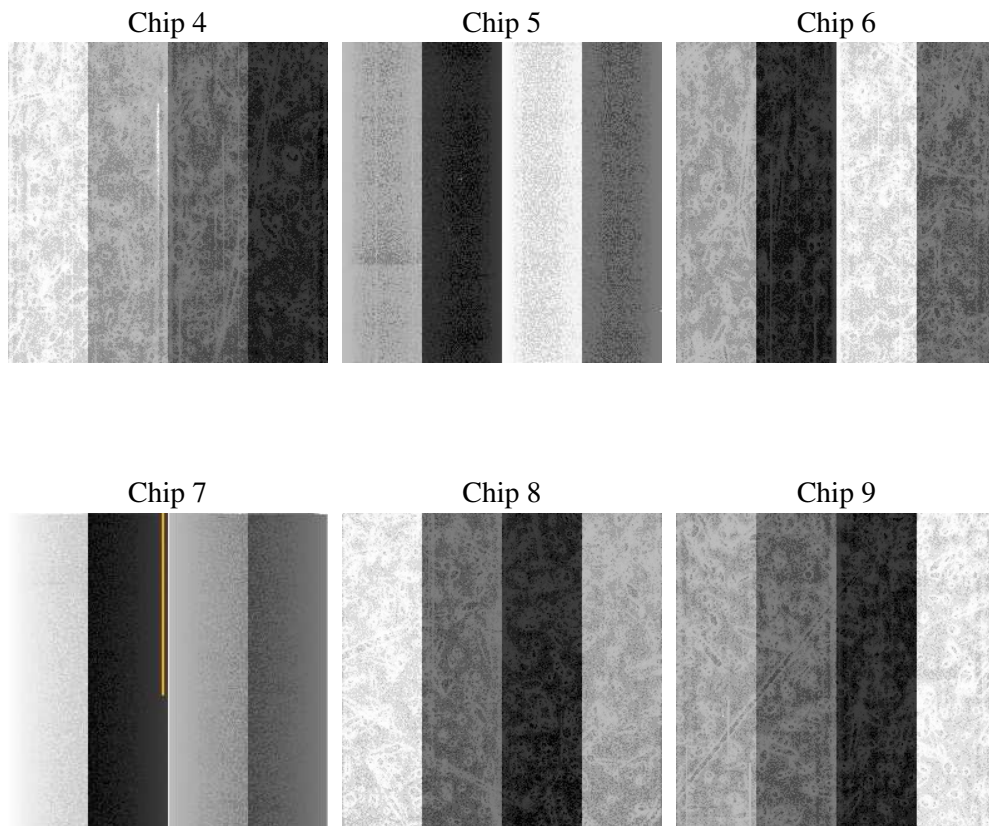
2 OBI

2.1 OBI

2.1.1 Images



2.1.2 Bias



2.1.3 Parameters

obi_num	2
ascdsver	7.6.8.1
caldsver	3.2.3
date	2006-09-08T05:29:17
revision	2

sched_exp_time	0.0
ontime	6712.1251659989
ontime4	2456.7057526112
ontime5	7253.3660206646
ontime6	2690.060213238
ontime7	6712.1251659989
ontime8	2719.2295732498
ontime9	2557.1779922843
l1events	1450104

2.1.4 Events

	ccd 4	ccd 5	ccd 6	ccd 7	ccd 8	ccd 9
level 1 events	145941	401021	168709	405350	173170	155913
rejected events	20410	61476	20703	49919	22957	20354
rejected %	13%	15%	12%	12%	13%	13%

	ccd 4	ccd 5	ccd 6	ccd 7	ccd 8	ccd 9
grade 0 events	71073	42237	80784	64741	82546	74166
	48%	10%	47%	15%	47%	47%
grade 1 events	345	149	365	146	409	414
	0%	0%	0%	0%	0%	0%
grade 2 events	22143	161886	25575	107541	26641	24023
	15%	40%	15%	26%	15%	15%
grade 3 events	7721	11607	9234	26554	9489	8489
	5%	2%	5%	6%	5%	5%
grade 4 events	7619	11668	8961	26050	9314	8281
	5%	2%	5%	6%	5%	5%
grade 5 events	1353	7012	1621	6731	1752	1426
	0%	1%	0%	1%	1%	0%
grade 6 events	16975	112147	23452	130545	22223	20600
	11%	27%	13%	32%	12%	13%
grade 7 events	18712	54315	18717	43042	20796	18514
	12%	13%	11%	10%	12%	11%

2.2 Compared Parameters

Parameter	Planned	Actual	Parameter	Planned	Actual
Instrument	ACIS	ACIS	Obspar format version number	6	6
Detector	ACIS-456789	ACIS-456789	Obspar file type	PREDICTED	ACTUAL
Grating	NONE	NONE	Obspar update status	NONE	UPDATED
Data mode	FAINT	FAINT	On-chip summing requested	N	N
Observation mode	SECONDARY	SECONDARY	Subarray requested	NONE	NONE
Pointing RA	0	150.027619499364	Alternating exposures requested	N	N
Pointing Dec	0	-18.01139131103962	Primary exposure time	0.000000	3.2
Pointing Roll	0.0	303.7889819640508			
SIM focus pos (mm)	-0.684267	-0.7809083437167272			
SIM defocus (mm)	0	0.7524282956875696			
SIM translation stage pos (mm)	-190.132523	250.466033080201			
SIM translation stage offset (mm)	0	-0.01005468664627074			
Observation start time	132727290.905	132727290.13641			
Observation start date	2002-03-17T04:41:31	2002-03-17T04:41:30			
Observation end time	132765281.506	132765280.73795			
Observation end date	2002-03-17T15:14:42	2002-03-17T15:14:40			
Read mode	TIMED	TIMED			

2.3 Aspect

2.4 Star Slots

2.5 FID Slots

A Summary

A.1 Status

V&V Scientist	Jen Lauer
V&V Date (YYYY-MM-DD)	2006.09.08
V&V Edition	1
V&V Disposition and Status	OK
V&V Charge Time	6.71112641

A.2 Comments