

V&V Reference Report

L2 ASCDS Version : 7.6.8.1

Observation 61254 - L2 Version 001
Chandra X-Ray Center

L2 Processing Date : Sep 8 2006

Contents

1	Front	2
2	OBI	3
2.1	OBI	3
2.1.1	Images	3
2.1.2	Bias	3
2.1.3	Parameters	4
2.1.4	Events	4
2.2	Compared Parameters	5
2.3	Aspect	6
2.4	Star Slots	8
2.5	FID Slots	8
A	Summary	9
A.1	Status	9
A.2	Comments	9

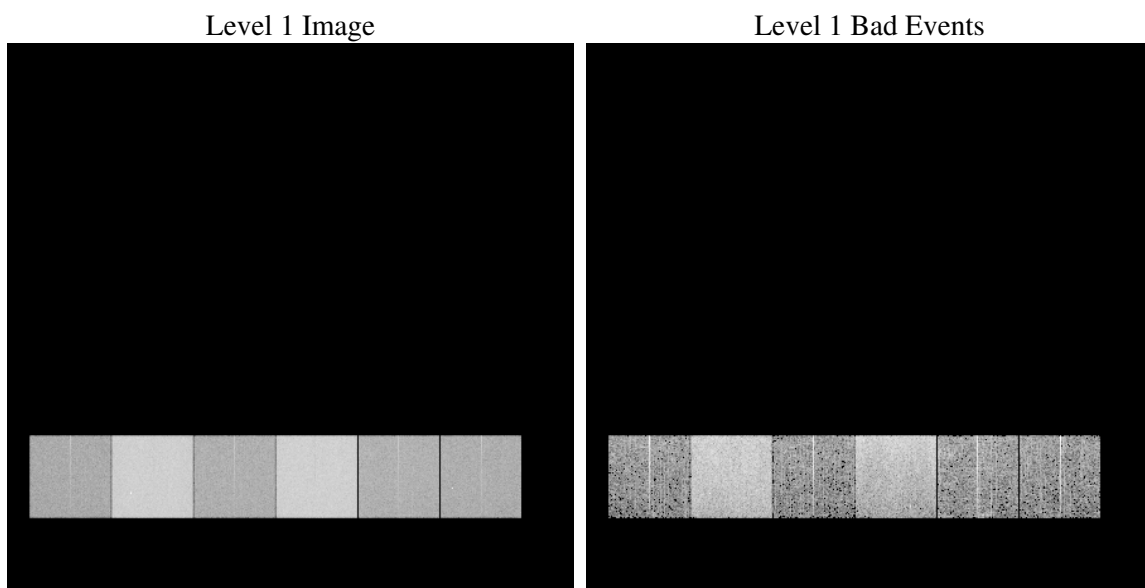
1 Front

seq_num	
obs_id	61254
title	ACIS-456789 diagnostics
observer	CHANDRA engineering request/realtime commanding
object	
dtcycle	0
cycle	P
ra_targ	0.0
dec_targ	0.0
ra_nom	170.02473289222
dec_nom	-9.0149051918372
roll_nom	295.83103136785
revision	2
ontime	7335.7630018443
livetime	7242.8731536488
ontime4	2782.2972064465
ontime5	7928.8999616653
ontime6	2976.718466416
ontime7	7335.7630018443
ontime8	3054.5845792741
ontime9	2953.9080463499
l2events	1312138

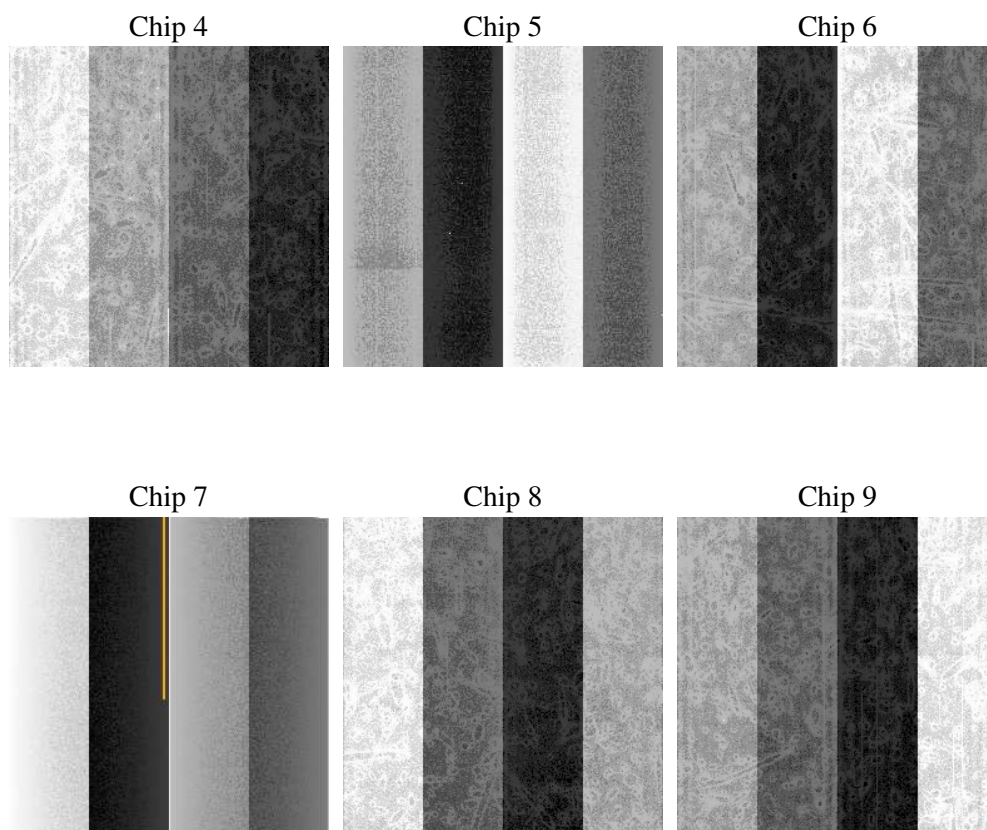
2 OBI

2.1 OBI

2.1.1 Images



2.1.2 Bias



2.1.3 Parameters

obi_num	0
ascdsver	7.6.8.1
caldsver	3.2.3
date	2006-09-08T14:35:15
revision	2

sched_exp_time	0.0
ontime	7337.6392883807
ontime4	2784.050372988
ontime5	7930.7352081984
ontime6	2978.5126729608
ontime7	7337.6392883807
ontime8	3056.2967058122
ontime9	2955.8253728896
l1events	1569359

2.1.4 Events

	ccd 4	ccd 5	ccd 6	ccd 7	ccd 8	ccd 9
level 1 events	161471	423229	183336	433366	191989	175968
rejected events	21027	63080	20891	50831	24264	20901
rejected %	13%	14%	11%	11%	12%	11%

	ccd 4	ccd 5	ccd 6	ccd 7	ccd 8	ccd 9
grade 0 events	79297	40853	89069	69653	92580	85340
	49%	9%	48%	16%	48%	48%
grade 1 events	429	107	420	151	430	378
	0%	0%	0%	0%	0%	0%
grade 2 events	25272	174940	28133	116060	29856	27690
	15%	41%	15%	26%	15%	15%
grade 3 events	8758	11543	9771	28905	10508	9439
	5%	2%	5%	6%	5%	5%
grade 4 events	8362	11392	10002	27940	10583	9460
	5%	2%	5%	6%	5%	5%
grade 5 events	1326	7039	1537	6820	1778	1572
	0%	1%	0%	1%	0%	0%
grade 6 events	18929	121551	25667	140140	24378	23287
	11%	28%	13%	32%	12%	13%
grade 7 events	19098	55804	18737	43697	21876	18802
	11%	13%	10%	10%	11%	10%

2.2 Compared Parameters

Parameter	Planned	Actual	Parameter	Planned	Actual
Instrument	ACIS	ACIS	Obspar format version number	6	6
Detector	ACIS-456789	ACIS-456789	Obspar file type	PREDICTED	ACTUAL
Grating	NONE	NONE	Obspar update status	NONE	UPDATED
Data mode	FAINT	FAINT	On-chip summing requested	N	N
Observation mode	SECONDARY	SECONDARY	Subarray requested	NONE	NONE
Pointing RA	0	170.0247328922156	Alternating exposures requested	N	N
Pointing Dec	0	-9.014905191837174	Primary exposure time	3.2	3.2
Pointing Roll	0.0	295.8310313678496			
SIM focus pos (mm)	-0.684267	-0.7809083437167272			
SIM defocus (mm)	0	0.7524282956875696			
SIM translation stage pos (mm)	-190.132523	250.466033080201			
SIM translation stage offset (mm)	0	-0.01005468664627074			
Observation start time	133450912.234191	133450911.46572			
Observation start date	2002-03-25T13:41:52	2002-03-25T13:41:51			
Observation end time	133472221.985055	133472221.21659			
Observation end date	2002-03-25T19:37:02	2002-03-25T19:37:01			
Read mode	TIMED	TIMED			

2.3 Aspect

2.4 Star Slots

2.5 FID Slots

A Summary

A.1 Status

V&V Scientist	Beth Sundheim
V&V Date (YYYY-MM-DD)	2006.09.08
V&V Edition	1
V&V Disposition and Status	OK
V&V Charge Time	7.335763

A.2 Comments

Focal plane temperature is warmer than -118 degrees at the very beginning of the observation. The ACIS calibrations are not verified or necessarily applicable for focal plane temperatures warmer than -118 degrees.