

V&V Reference Report

L2 ASCDS Version : 8.4.5

Observation 61234 - L2 Version 3
Chandra X-Ray Center

L2 Processing Date : Oct 5 2012

Contents

1	Front	2
2	OBI	3
2.1	OBI	3
2.1.1	Images	3
2.1.2	Bias	3
2.1.3	Parameters	4
2.1.4	Events	4
2.2	Compared Parameters	5
2.3	Star Slots	6
2.4	FID Slots	6
A	Summary	7
A.1	Status	7
A.2	Comments	7

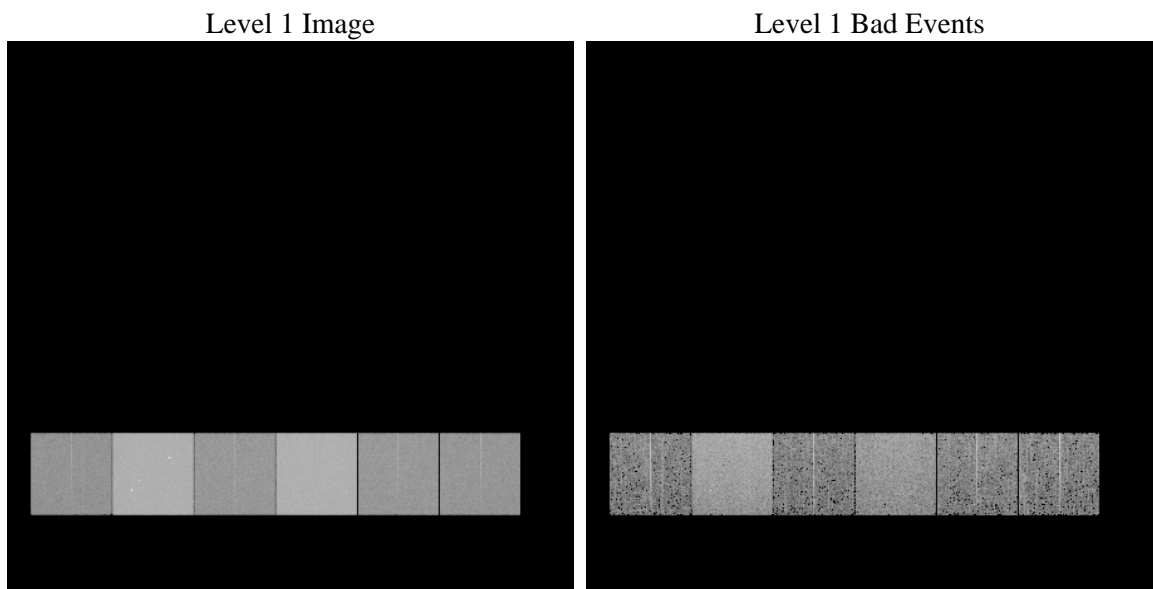
1 Front

seq_num	 	Sequence number
obs_id	61234	Observation id
title	ACIS-456789 diagnostics	Proposal title
observer	CHANDRA engineering request/realtime commanding	Principal investig
object	 	Source name
dtcycle	0	
cycle	P	events from which exps? Prim/Second/Both
ra_targ	0.0	Observer's specified target RA [deg]
dec_targ	0.0	Observer's specified target Dec [deg]
ra_nom	70.034334862653	Nominal RA [deg]
dec_nom	44.984864634525	Nominal Dec [deg]
roll_nom	295.27158279195	Nominal Roll [deg]
revision	3	Processing version of data
ontime	7426.9354731441	Sum of GTIs [s]
livetime	7332.8911442195	Livetime [s]
ontime4	2709.4470905364	Sum of GTIs [s]
ontime5	8020.0302720368	Sum of GTIs [s]
ontime6	3002.9985070825	Sum of GTIs [s]
ontime7	7426.9354731441	Sum of GTIs [s]
ontime8	3014.1448931098	Sum of GTIs [s]
ontime9	2905.7672576606	Sum of GTIs [s]
l2events	1325969	Number of level 2 events

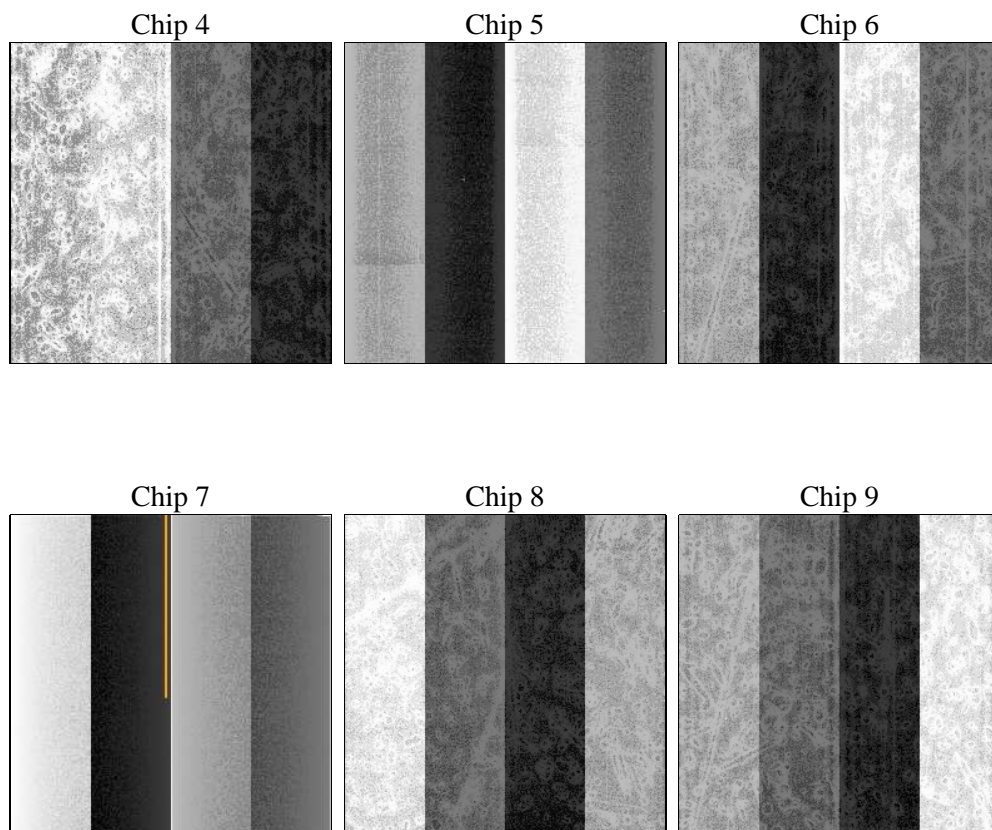
2 OBI

2.1 OBI

2.1.1 Images



2.1.2 Bias



2.1.3 Parameters

obi_num	1	Obi number	sched_exp_time	0.0	[s] Scheduled observation exposure time
ascdsver	8.4.5	Processing system revision	ontime	7426.9354731441	Sum of GTIs [s]
caldsver	4.5.2	 	ontime4	2709.4470905364	Sum of GTIs [s]
date	2012-10-05T15:06:49	Date and time of file creation	ontime5	8020.0302720368	Sum of GTIs [s]
revision	3	Processing version of data	ontime6	3002.9985070825	Sum of GTIs [s]
			ontime7	7426.9354731441	Sum of GTIs [s]
			ontime8	3014.1448931098	Sum of GTIs [s]
			ontime9	2905.7672576606	Sum of GTIs [s]
			l1events	1568609	Number of level 1 events

2.1.4 Events

	ccd 4	ccd 5	ccd 6	ccd 7	ccd 8	ccd 9		ccd 4	ccd 5	ccd 6	ccd 7	ccd 8	ccd 9
level 1 events	156842	430299	183781	436749	187701	173237	grade 0 events	76288	88427	88912	100170	89453	82455
rejected events	21787	55292	21039	39260	24119	22624		48%	20%	48%	22%	47%	47%
rejected %	13%	12%	11%	8%	12%	13%	grade 1 events	409	299	408	250	382	479
								0%	0%	0%	0%	0%	0%
							grade 2 events	23931	136181	28287	87267	28973	26582
								15%	31%	15%	19%	15%	15%
							grade 3 events	8427	22883	9952	40125	10451	9422
								5%	5%	5%	9%	5%	5%
							grade 4 events	8254	23005	10042	39590	10403	9282
								5%	5%	5%	9%	5%	5%
							grade 5 events	1331	10208	1634	7880	1836	1647
								0%	2%	0%	1%	0%	0%
							grade 6 events	18155	104511	25549	130337	24302	22872
								11%	24%	13%	29%	12%	13%
							grade 7 events	20047	44785	18997	31130	21901	20498
								12%	10%	10%	7%	11%	11%

2.2 Compared Parameters

Parameter	Planned	Actual	Parameter	Planned	Actual
Instrument	ACIS	ACIS	Obspar format version number	7	7
Detector	ACIS-456789	ACIS-456789	Obspar file type	PREDICTED	ACTUAL
Grating	NONE	NONE	Obspar update status	NONE	UPDATED
Data mode	FAINT	FAINT	On-chip summing requested	N	N
Observation mode	SECONDARY	SECONDARY	Subarray requested	NONE	NONE
[deg] Pointing RA	0	70.03433486265332	Alternating exposures requested	N	N
[deg] Pointing Dec	0	44.98486463452467	[s] Primary exposure time	0.000000	3.2
[deg] Pointing Roll	0.0	295.2715827919486			
[mm] SIM focus pos	-0.684267	-0.6828225247311905			
[mm] SIM defocus	0	0.8505141146731063			
[mm] SIM translation stage pos	-190.132523	250.466033080201			
[mm] SIM translation stage offset	0	-0.01005468664627074			
[s] Observation start time (MET)	135044410.355	135044409.3304			
Observation start date	2002-04-13T00:20:10	2002-04-13T00:20:09			
[s] Observation end time (MET)	135066410.956	135066409.93129			
Observation end date	2002-04-13T06:26:51	2002-04-13T06:26:49			
Read mode	TIMED	TIMED			

2.3 Star Slots

2.4 FID Slots

A Summary

A.1 Status

V&V Scientist	Beth Sundheim
V&V Date (YYYY-MM-DD)	2012.10.11
V&V Edition	1
V&V Disposition and Status	OK
V&V Charge Time	7.4269354731441

A.2 Comments