

# V&V Reference Report

## L2 ASCDS Version : 7.6.7.1

Observation 6114 - L2 Version 001  
Chandra X-Ray Center

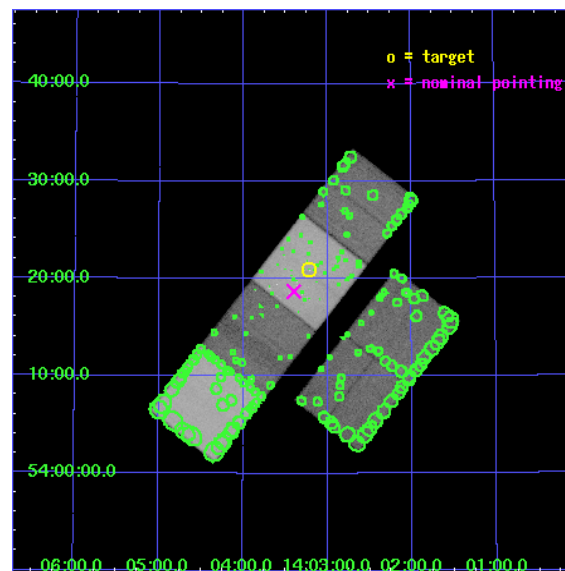
L2 Processing Date : Apr 19 2006

## Contents

<b>1</b>	<b>Front</b>	<b>2</b>
<b>2</b>	<b>OBI</b>	<b>3</b>
2.1	OBI . . . . .	3
2.1.1	Images . . . . .	3
2.1.2	Bias . . . . .	3
2.1.3	Parameters . . . . .	4
2.1.4	Events . . . . .	4
2.2	Compared Parameters . . . . .	5
2.3	Aspect . . . . .	6
2.4	Star Slots . . . . .	9
2.4.1	Slot 3 . . . . .	9
2.4.2	Slot 4 . . . . .	10
2.4.3	Slot 5 . . . . .	11
2.4.4	Slot 6 . . . . .	12
2.4.5	Slot 7 . . . . .	13
2.5	FID Slots . . . . .	14
2.5.1	Slot 0 . . . . .	14
2.5.2	Slot 1 . . . . .	15
2.5.3	Slot 2 . . . . .	16
<b>3</b>	<b>Point Sources</b>	<b>17</b>
<b>A</b>	<b>Summary</b>	<b>18</b>
A.1	Status . . . . .	18
A.2	Comments . . . . .	18

# 1 Front

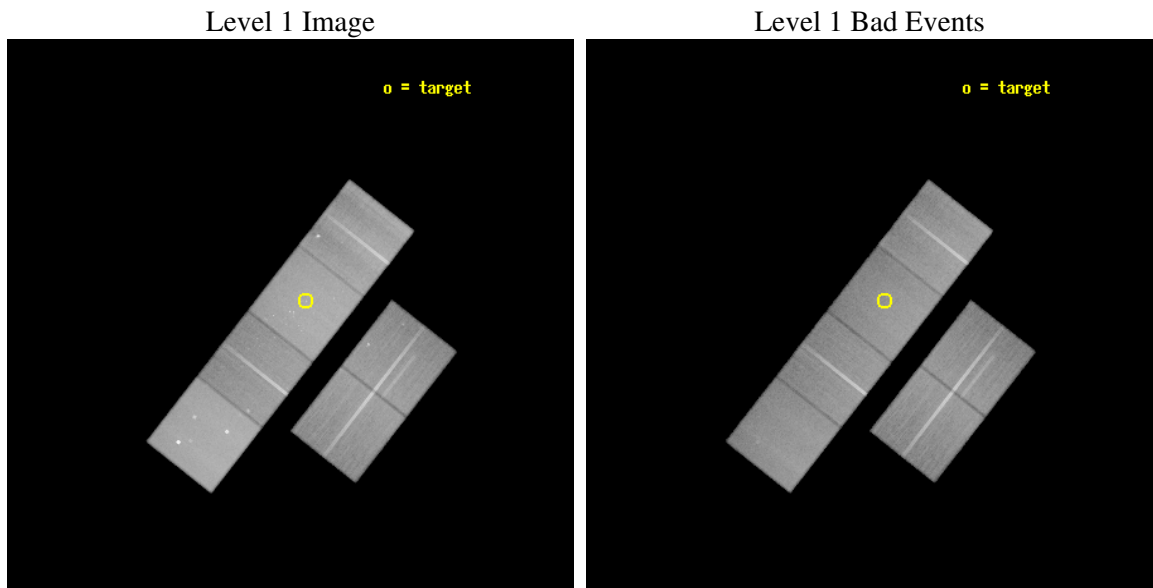
seq_num	600390
obs_id	6114
title	An Ultra-Deep Study of M101
observer	Dr. K. Kuntz
object	M101
dtcycle	0
cycle	P
ra_targ	210.80375
dec_targ	54.348778
ra_nom	210.84969530685
dec_nom	54.31175301232
roll_nom	308.1193070803
revision	2
ontime	67052.799750209
livetime	66203.736825423
ontime2	66122.642189831
ontime3	66424.052116096
ontime5	67052.799750209
ontime6	66650.919765741
ontime7	67052.799750209
ontime8	66702.775300145
l2events	1006131



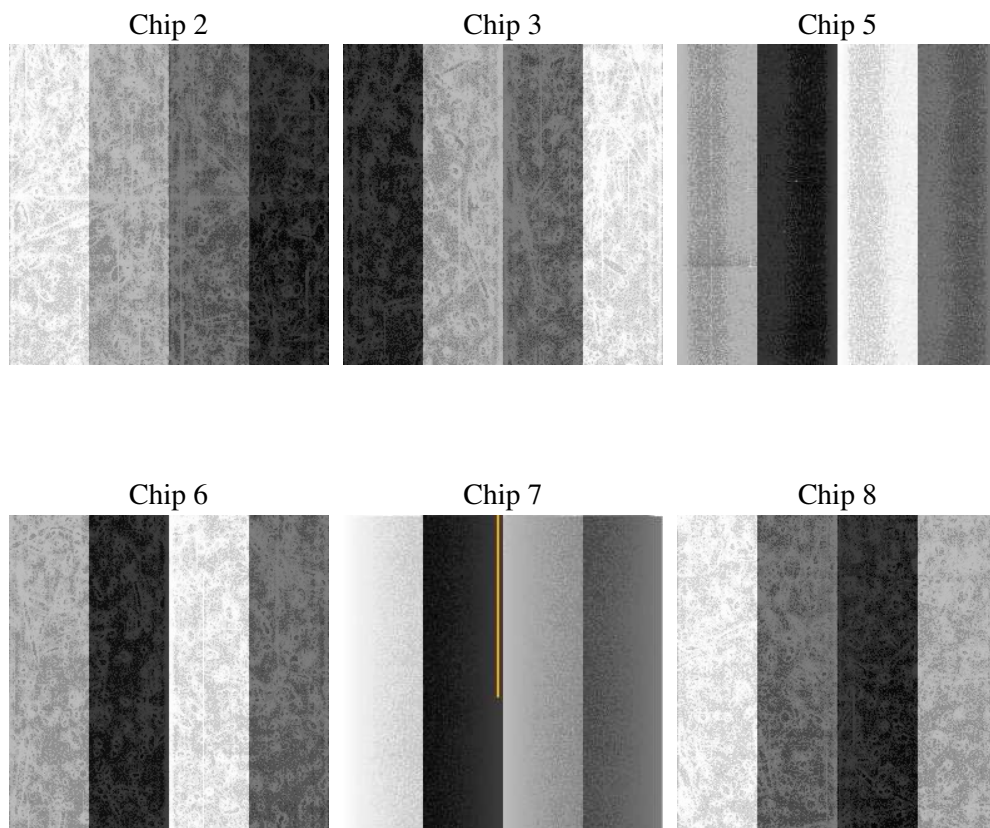
## 2 OBI

### 2.1 OBI

#### 2.1.1 Images



#### 2.1.2 Bias



### 2.1.3 Parameters

obi_num	0
ascdsver	7.6.7.1
caldsver	3.2.1
date	2006-04-19T14:46:08
revision	2

sched_exp_time	67007.971000
ontime	67059.558409601
ontime2	66129.400849223
ontime3	66430.810775489
ontime5	67059.558409601
ontime6	66657.678425133
ontime7	67059.558409601
ontime8	66709.533959538
l1events	3890884

### 2.1.4 Events

	ccd 2	ccd 3	ccd 5	ccd 6	ccd 7	ccd 8
level 1 events	541227	517031	837437	539545	776298	679346
rejected events	464484	440582	434249	456393	435914	515543
rejected %	85%	85%	51%	84%	56%	75%

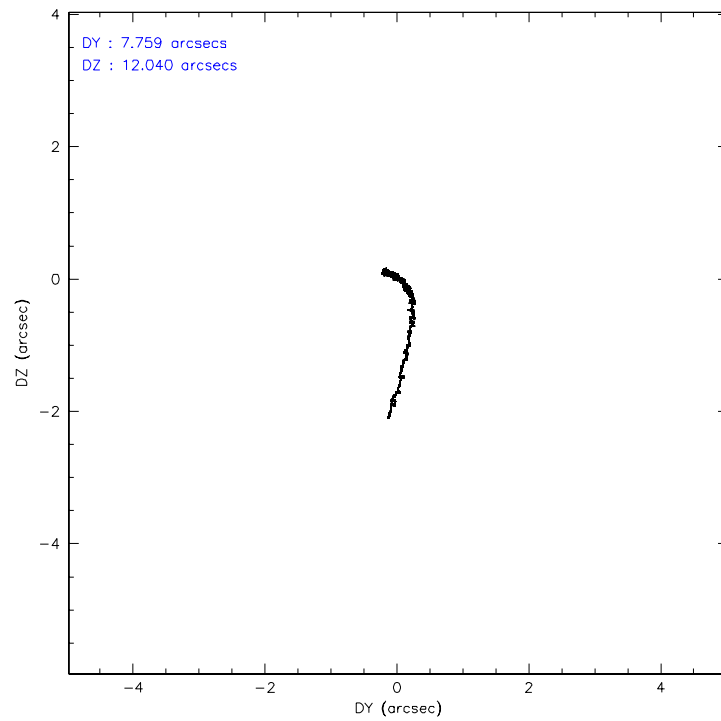
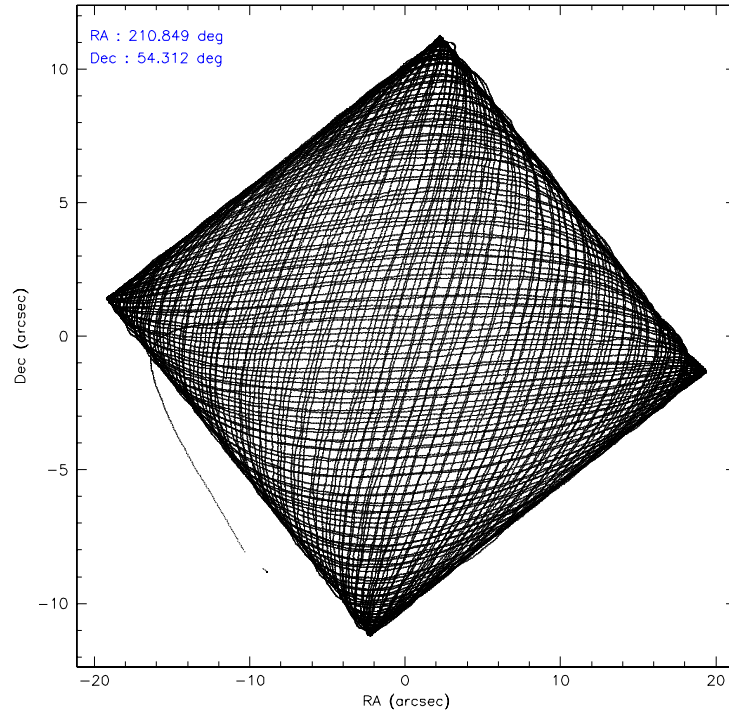
	ccd 2	ccd 3	ccd 5	ccd 6	ccd 7	ccd 8
grade 0 events	39721	39648	36425	41597	25838	63312
	7%	7%	4%	7%	3%	9%
grade 1 events	443	403	892	328	407	562
	0%	0%	0%	0%	0%	0%
grade 2 events	13895	13078	125840	15328	81216	33743
	2%	2%	15%	2%	10%	4%
grade 3 events	6195	6335	9725	6661	18094	14782
	1%	1%	1%	1%	2%	2%
grade 4 events	6229	6458	9437	6311	17759	14140
	1%	1%	1%	1%	2%	2%
grade 5 events	20528	22751	38211	23739	47327	31259
	3%	4%	4%	4%	6%	4%
grade 6 events	10711	10934	221802	13266	197523	37838
	1%	2%	26%	2%	25%	5%
grade 7 events	443505	417424	395105	432315	388134	483710
	81%	80%	47%	80%	49%	71%

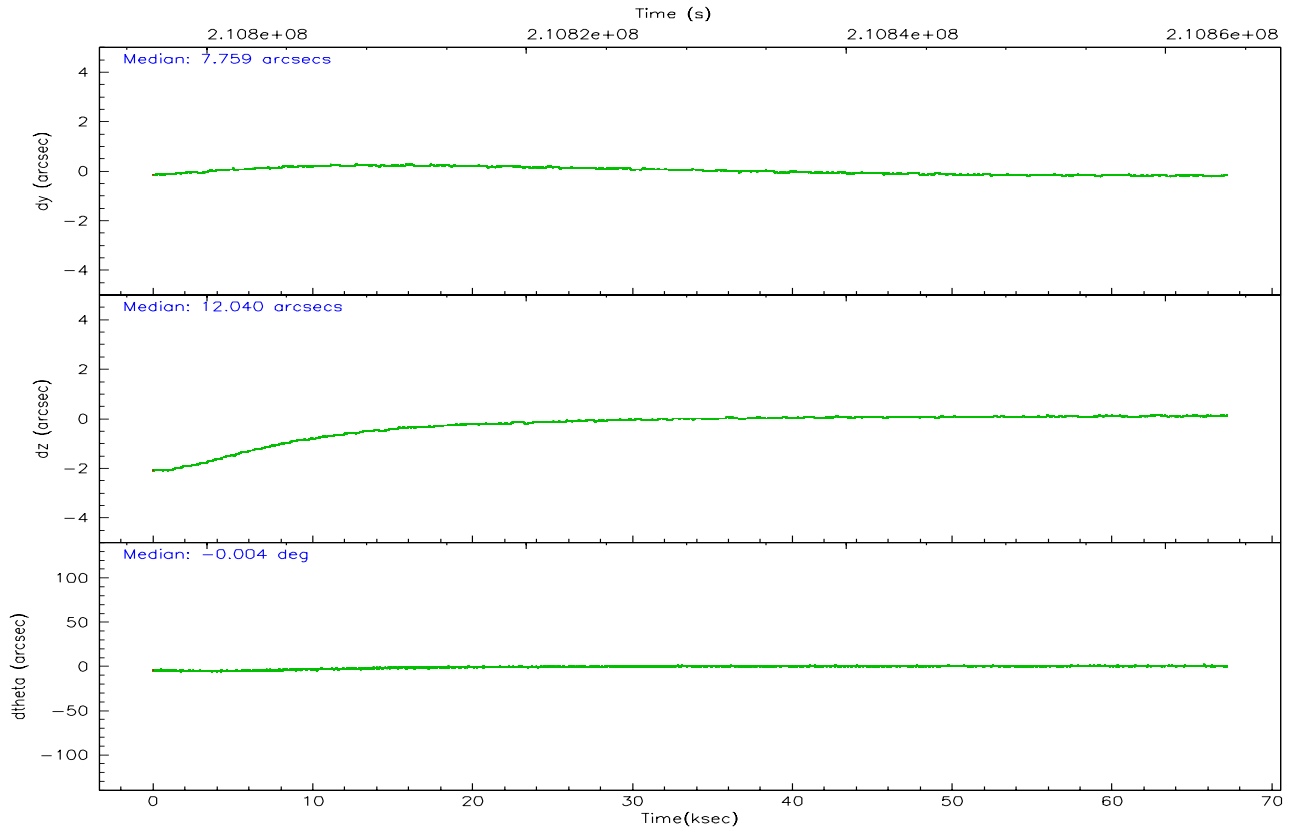
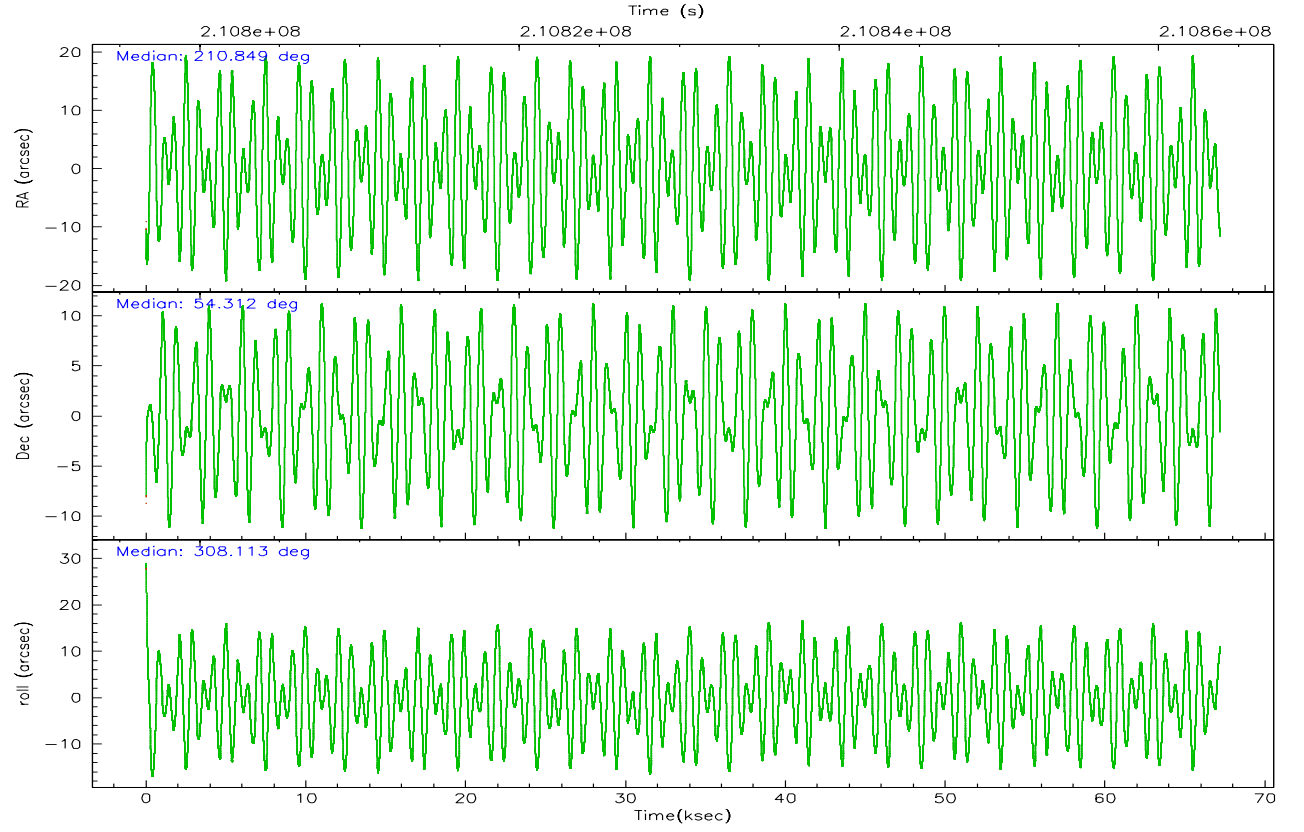


## 2.2 Compared Parameters

Parameter	Planned	Actual	Parameter	Planned	Actual
Instrument	ACIS	ACIS	Obspar format version number	6	6
Detector	ACIS-235678	ACIS-235678	Obspar file type	PREDICTED	ACTUAL
Grating	NONE	NONE	Obspar update status	NONE	UPDATED
Data mode	VFAINT	VFAINT	On-chip summing requested	N	N
Observation mode	POINTING	POINTING	Subarray requested	NONE	NONE
Pointing RA	210.806153	210.8496953068477	Alternating exposures requested	N	N
Pointing Dec	54.321537	54.31175301231959	Primary exposure time	0.000000	3.2
Pointing Roll	307.998039	308.1193070802991			
SIM focus pos (mm)	-0.684267	-0.6828225247311905			
SIM defocus (mm)	0	0.001444936568705701			
SIM translation stage pos (mm)	-190.132523	-190.1400660498719			
SIM translation stage offset (mm)	0	0.00754346686406393			
Observation start time	210796835.184000	210795829.08291			
Observation start date	2004-09-05T18:39:31	2004-09-05T18:23:49			
Observation end time	210863843.184000	210864059.23595			
Observation end date	2004-09-06T13:16:19	2004-09-06T13:20:59			
Read mode	TIMED	TIMED			

## 2.3 Aspect



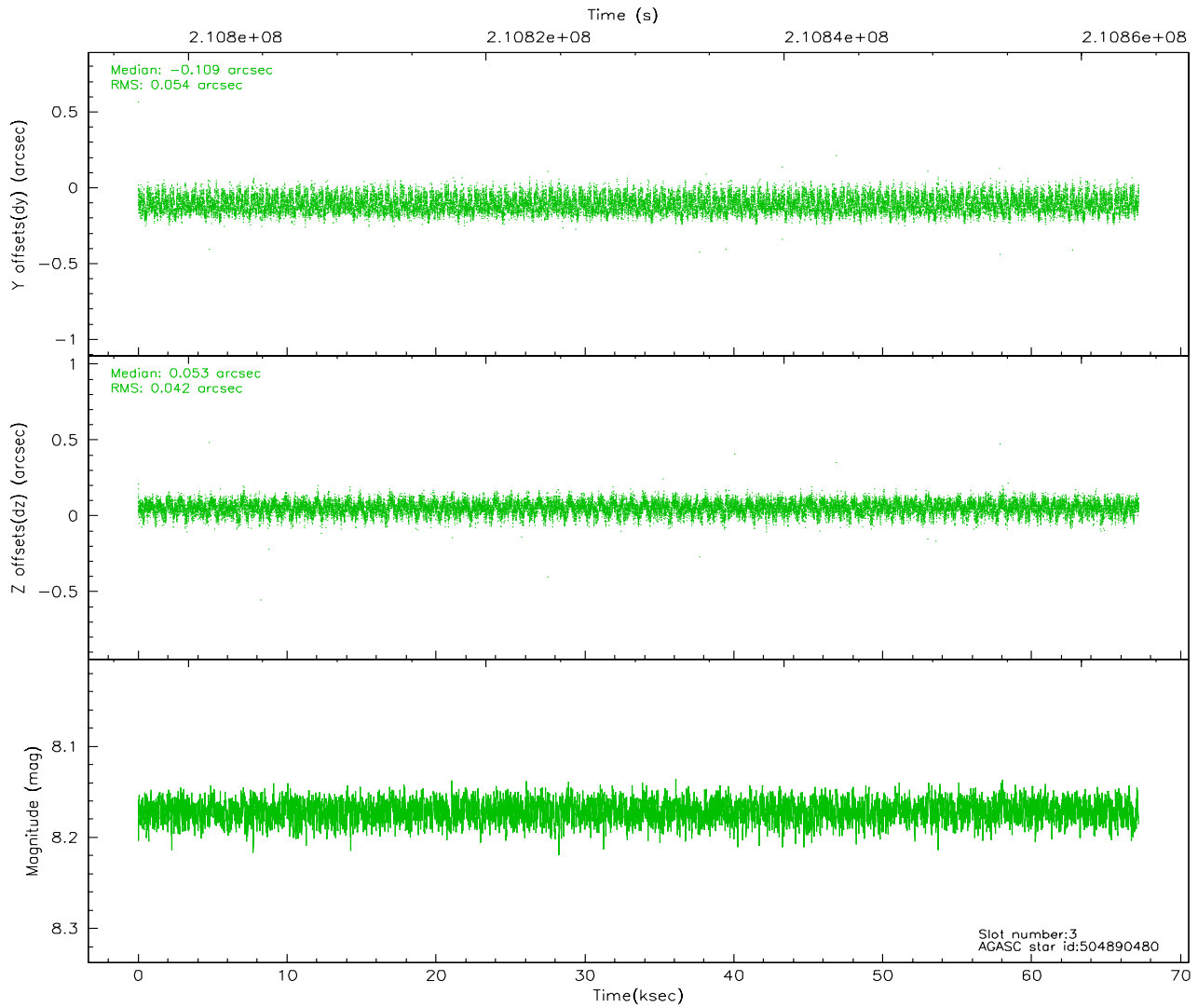
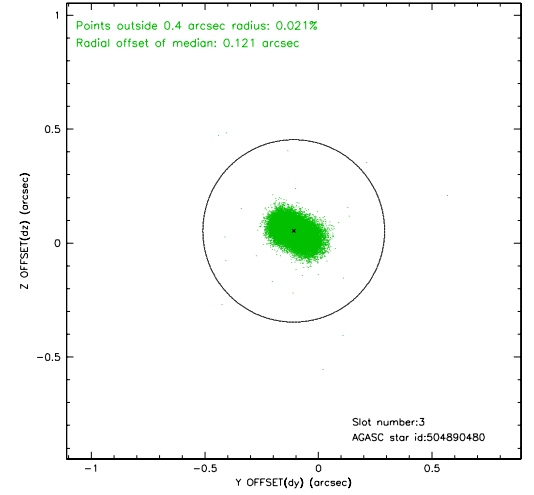
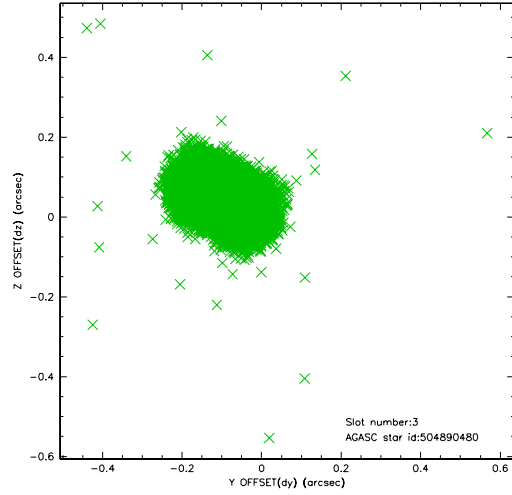


### Slot Statistics

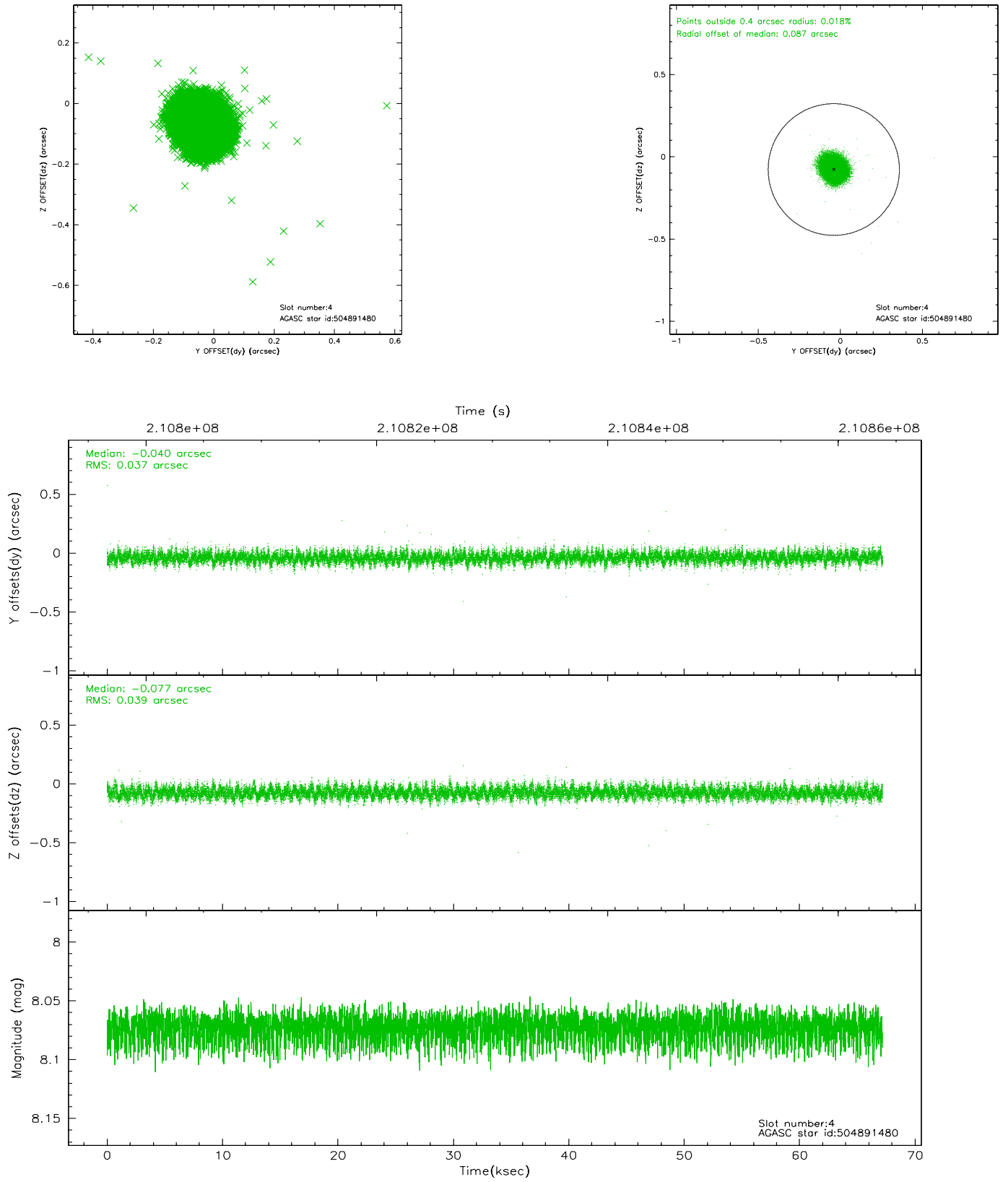
slot	status	id	mag	n_pts	med_dy	med_dz	dr1	dr2	ra	dec	mean_y	mean_z
0	FID	ACIS-S-2	7.10	16389	-0.002	0.002	0.010	0.035	0.000000	0.000000	-760.54	-1733.07
1	FID	ACIS-S-4	7.20	16390	0.028	0.001	0.016	0.039	0.000000	0.000000	2152.79	175.48
2	FID	ACIS-S-5	7.23	16388	-0.057	0.006	0.012	0.018	0.000000	0.000000	-1813.51	169.08
3	GUIDE	504890480	8.17	32766	-0.109	0.053	0.073	0.117	210.132463	53.768436	681.78	-2351.36
4	GUIDE	504891480	8.07	32773	-0.040	-0.077	0.056	0.092	210.708012	54.666096	-1103.21	602.83
5	GUIDE	504894408	9.28	32752	0.047	0.100	0.093	0.150	211.942794	54.047749	2240.51	1299.01
6	GUIDE	504894856	8.98	32693	0.012	-0.054	0.087	0.142	209.819510	54.132689	-756.30	-2049.23
7	GUIDE	505292416	9.31	32756	0.092	-0.023	0.090	0.147	210.920759	55.040479	-1894.54	1779.89

## 2.4 Star Slots

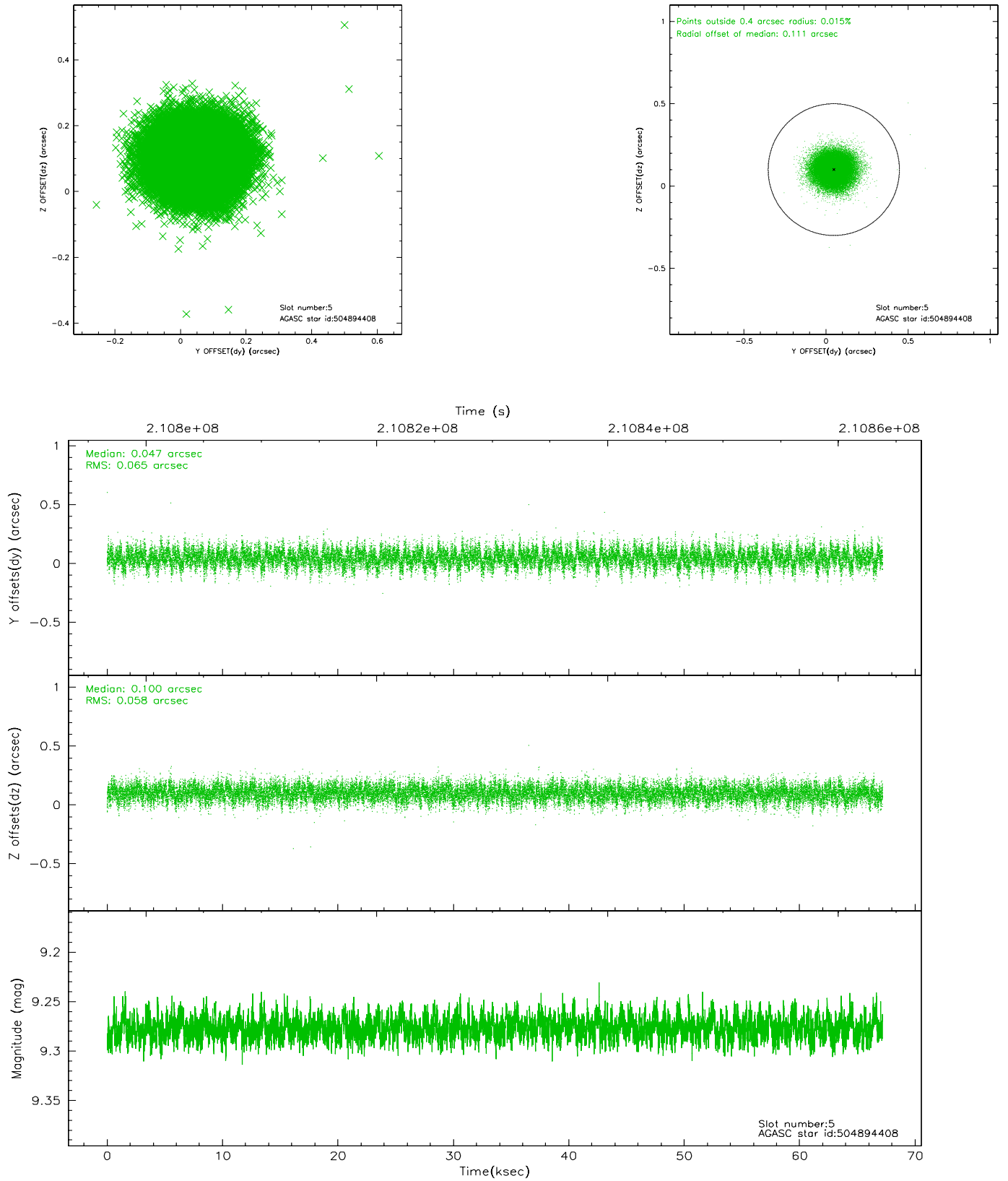
### 2.4.1 Slot 3



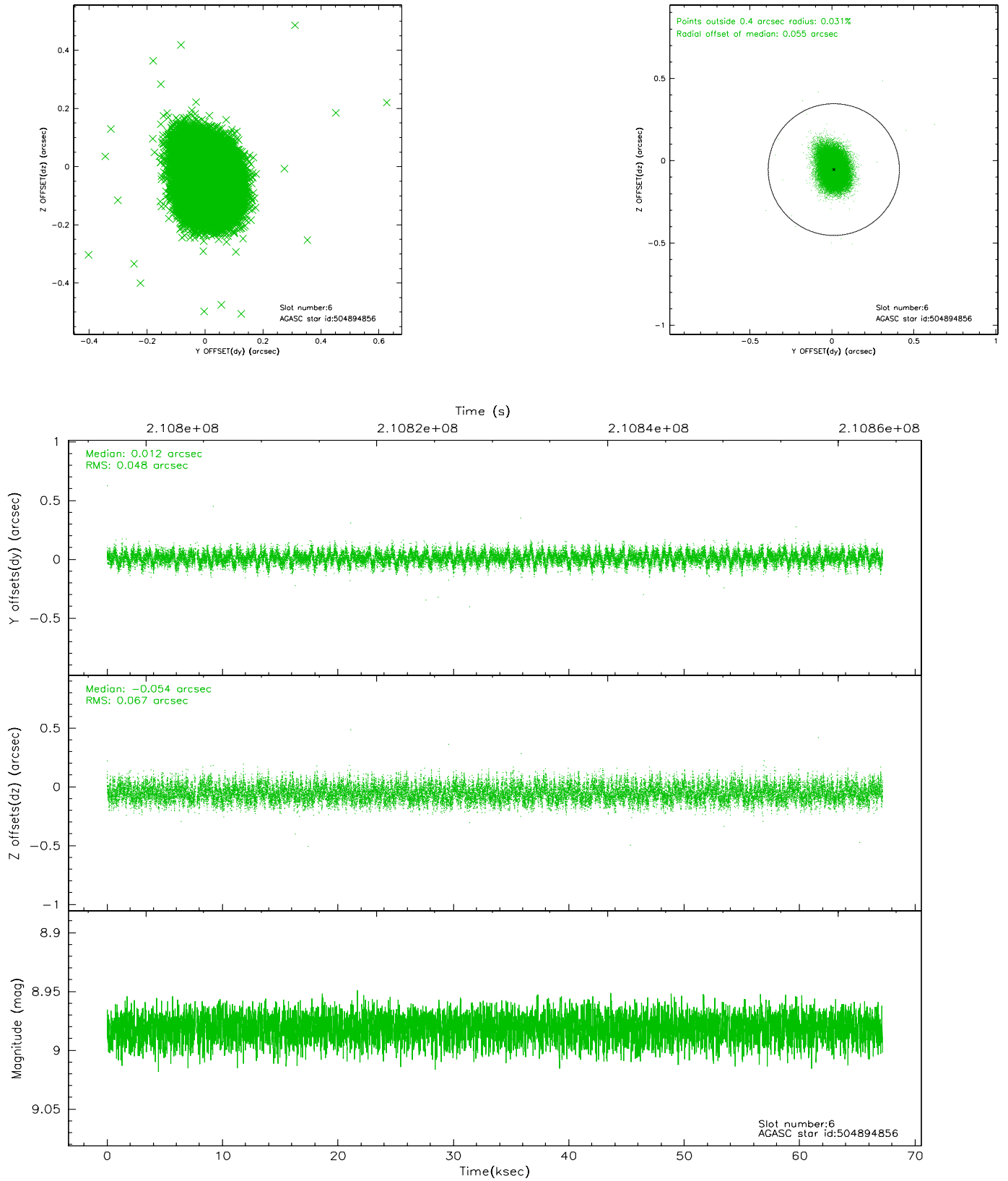
## 2.4.2 Slot 4



### 2.4.3 Slot 5

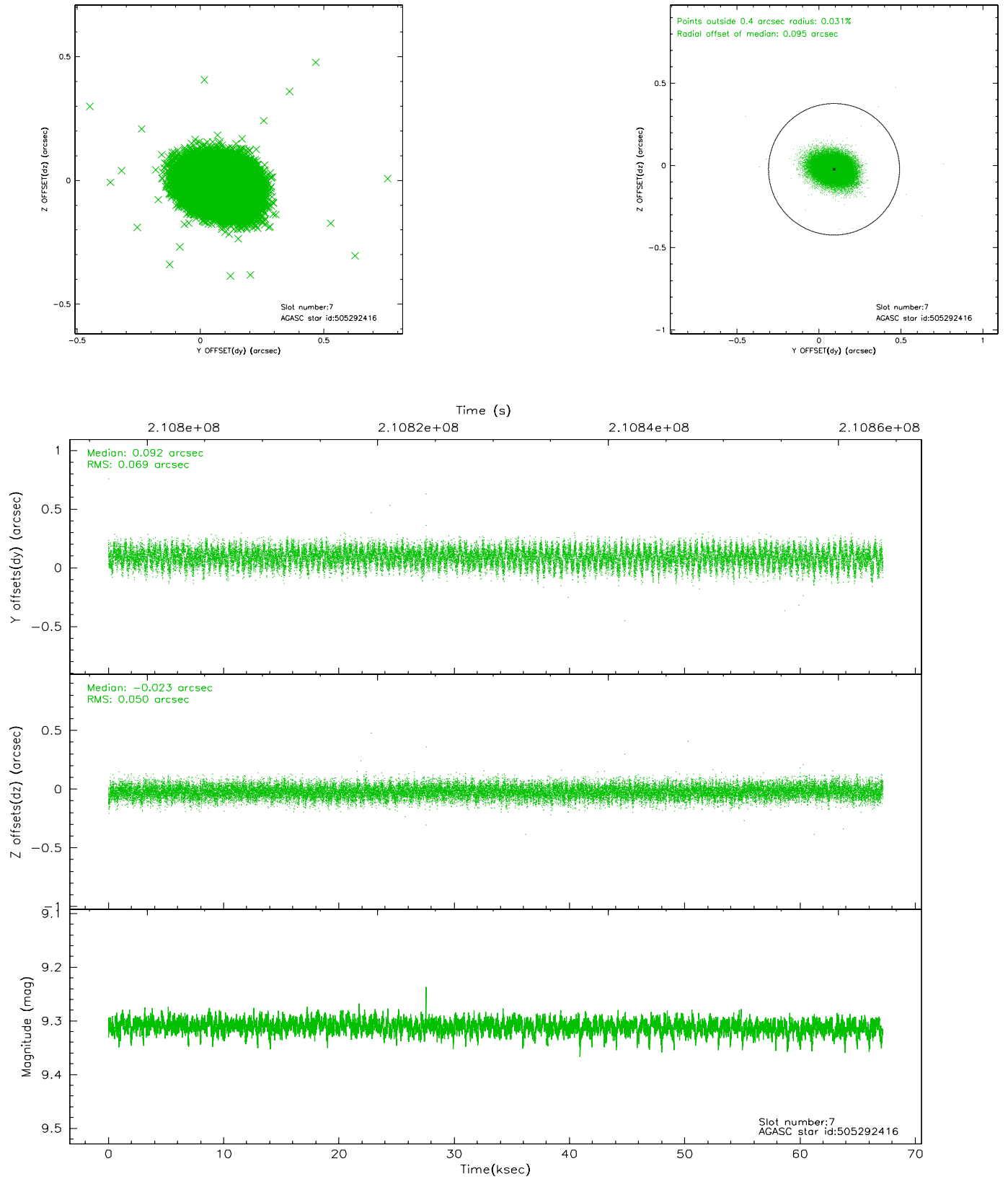


## 2.4.4 Slot 6



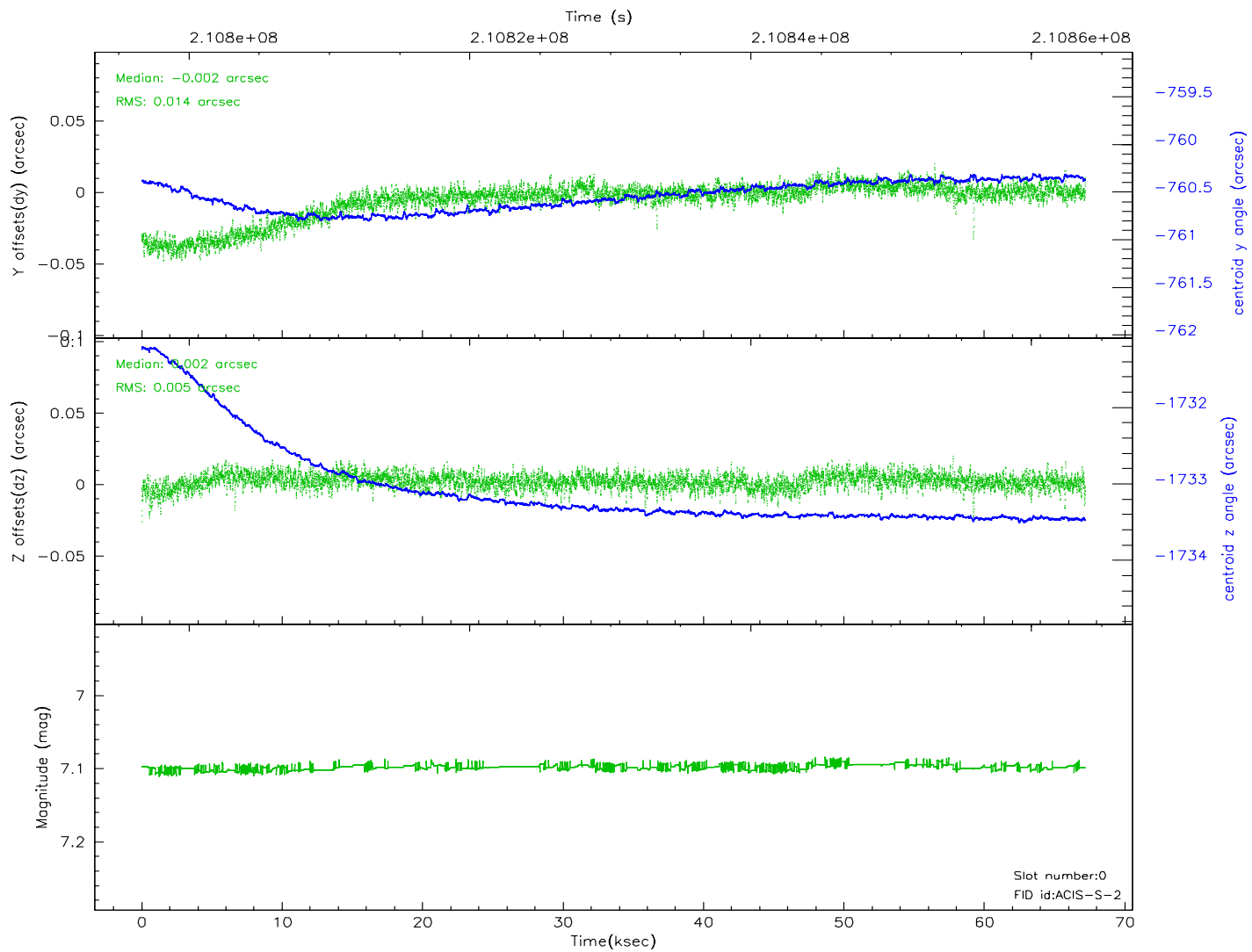
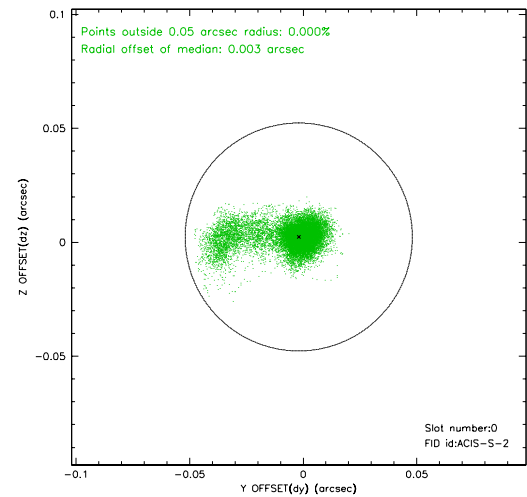
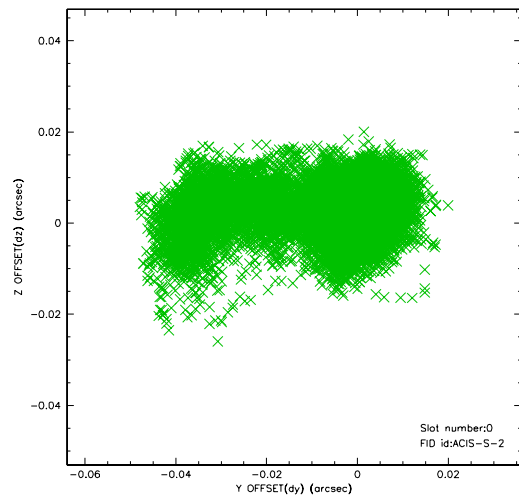


## 2.4.5 Slot 7

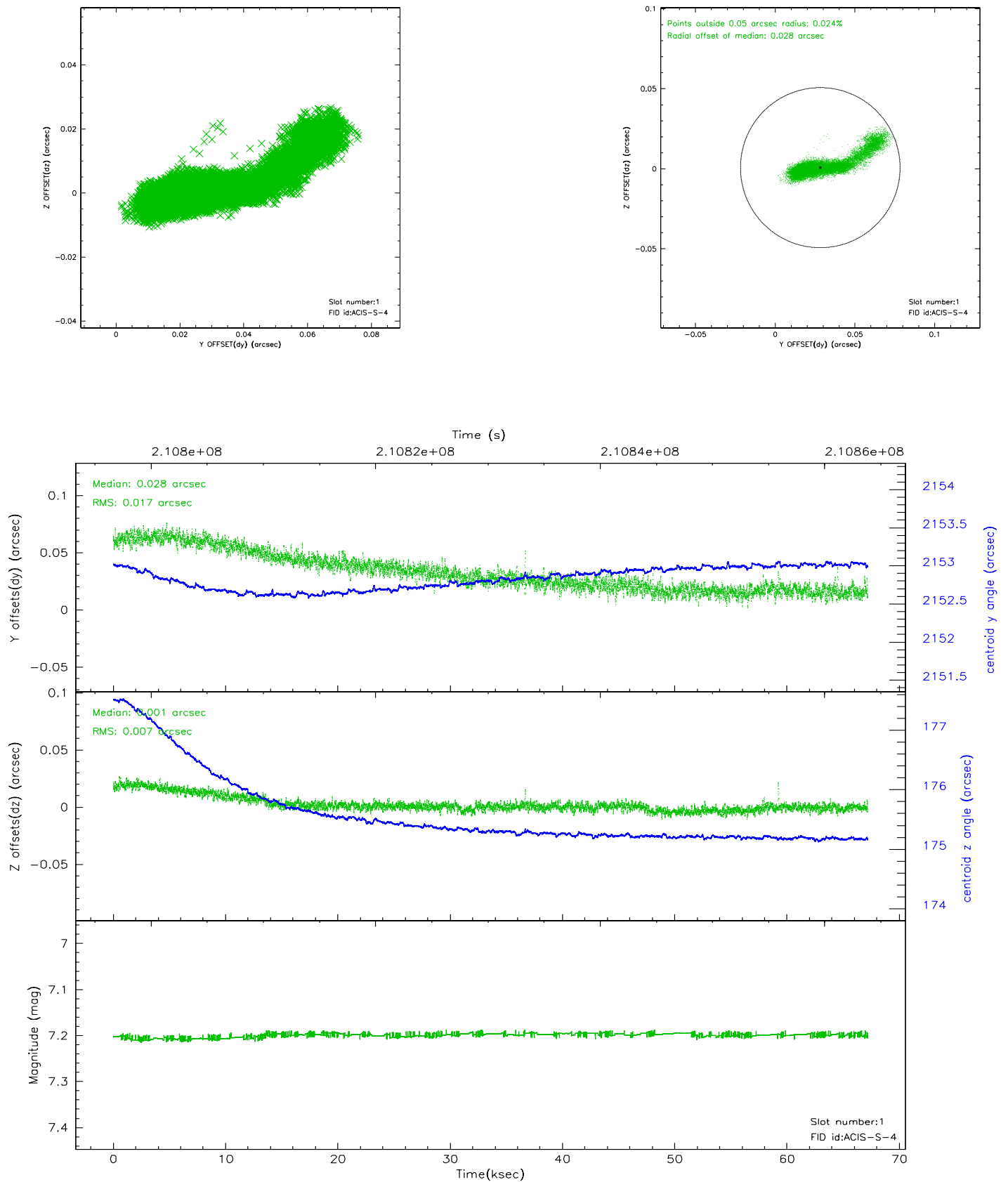


## 2.5 FID Slots

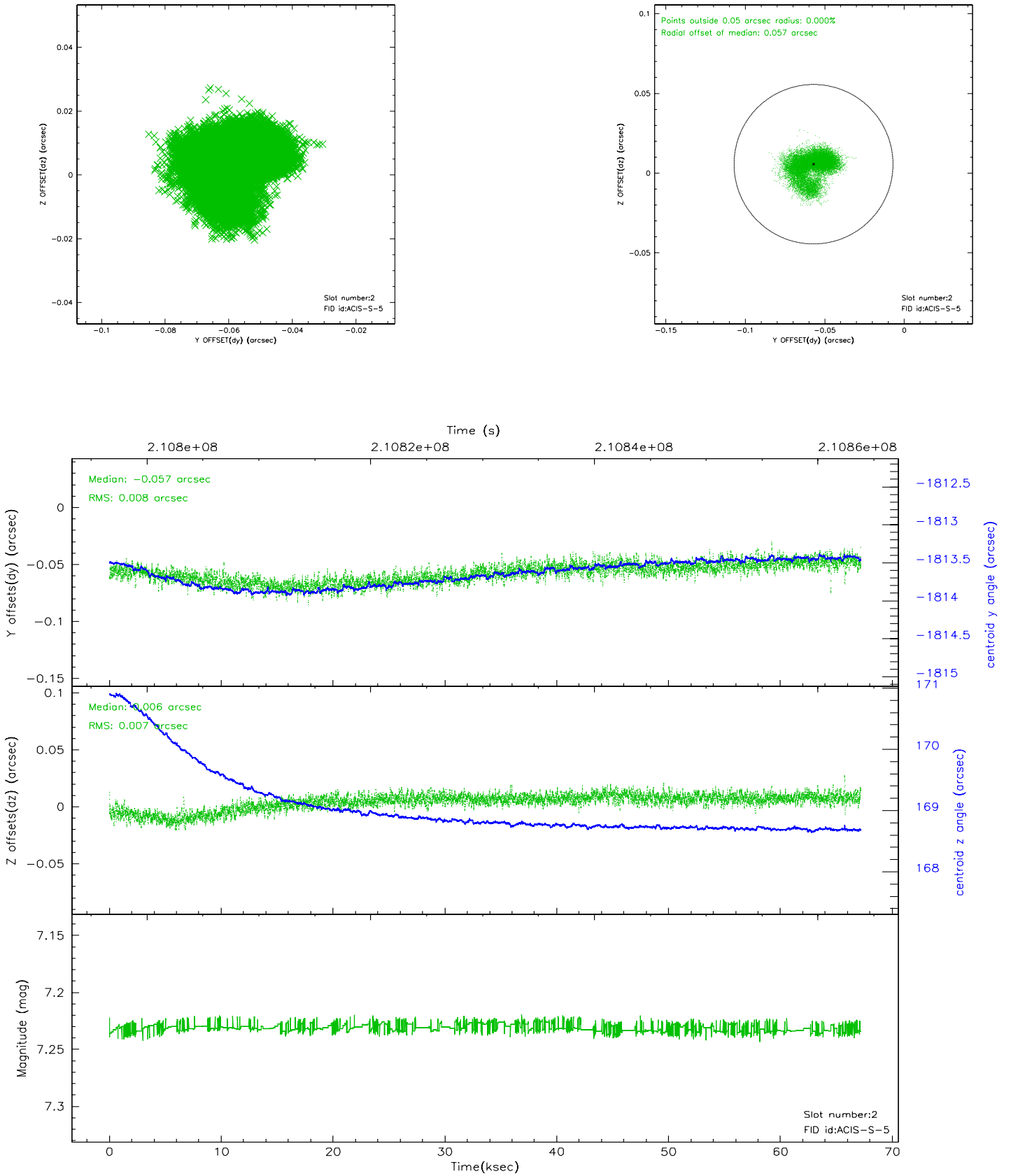
### 2.5.1 Slot 0



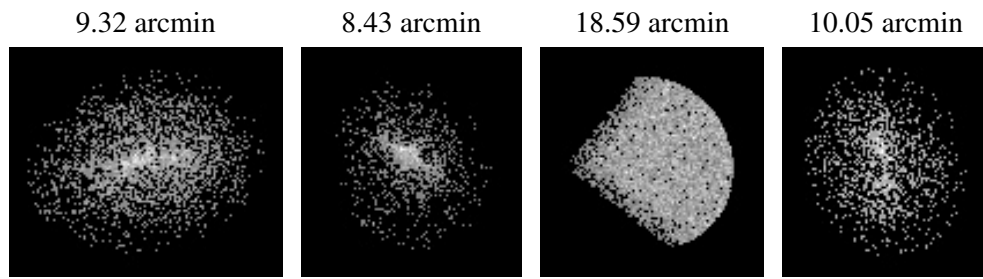
## 2.5.2 Slot 1



### 2.5.3 Slot 2



### 3 Point Sources



## A Summary

### A.1 Status

V&V Scientist	Beth Sundheim
V&V Date (YYYY-MM-DD)	2006.04.19
V&V Edition	1
V&V Disposition and Status	OK
V&V Charge Time	67.052

### A.2 Comments