

# V&V Reference Report

## L2 ASCDS Version : 7.6.9

Observation 61114 - L2 Version <sub>e</sub>1  
Chandra X-Ray Center

L2 Processing Date : Sep 26 2006

## Contents

<b>1</b>	<b>Front</b>	<b>2</b>
<b>2</b>	<b>OBI Primary</b>	<b>3</b>
2.1	OBI . . . . .	3
2.1.1	Images . . . . .	3
2.1.2	Bias . . . . .	3
2.1.3	Parameters . . . . .	4
2.1.4	Events . . . . .	4
2.2	Compared Parameters . . . . .	5
2.3	Aspect . . . . .	6
2.4	Star Slots . . . . .	8
2.5	FID Slots . . . . .	8
<b>3</b>	<b>OBI Secondary</b>	<b>8</b>
3.1	OBI . . . . .	8
3.1.1	Images . . . . .	8
3.1.2	Bias . . . . .	8
3.1.3	Parameters . . . . .	9
3.1.4	Events . . . . .	9
<b>A</b>	<b>Summary</b>	<b>10</b>
A.1	Status . . . . .	10
A.2	Comments . . . . .	10

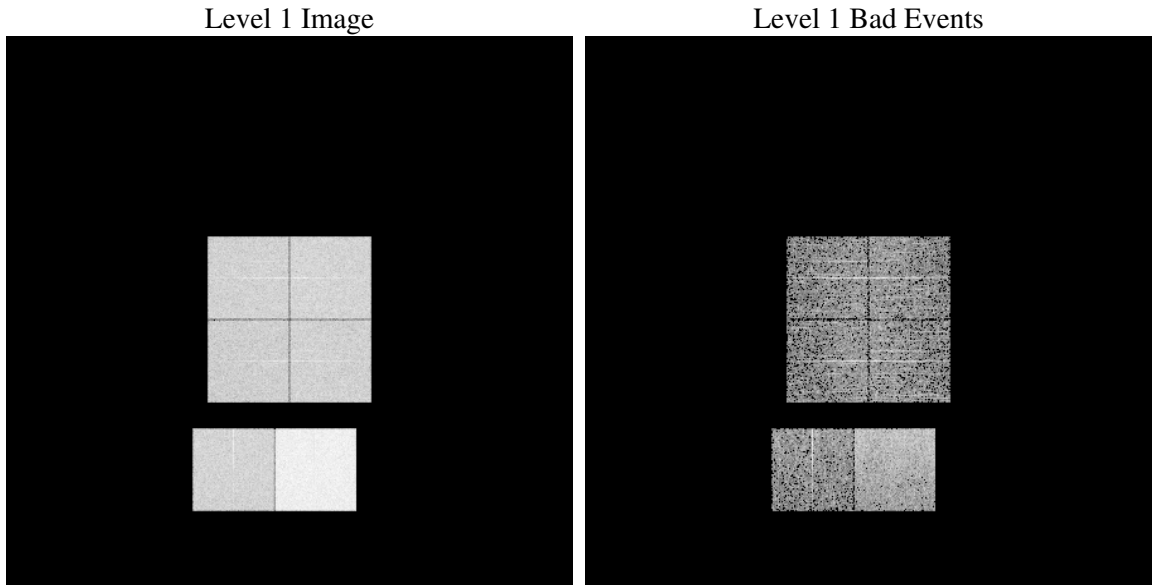
# 1 Front

seq_num	&#160
obs_id	61114
title	ACIS-012367 diagnostics
observer	CHANDRA engineering request/realtime commanding
object	&#160
dtcycle	0
cycle	P
ra_targ	0.0
dec_targ	0.0
ra_nom	312.02288756603
dec_nom	-48.975635871187
roll_nom	25.466364626797
revision	2
ontime	4210.9169915617
livetime	4168.1517545599
ontime0	2037.1054868698
ontime1	2154.0276298821
ontime2	1826.8893267214
ontime3	1939.8525097072
ontime6	2024.7771668732
ontime7	4210.9169915617
l2events	661698

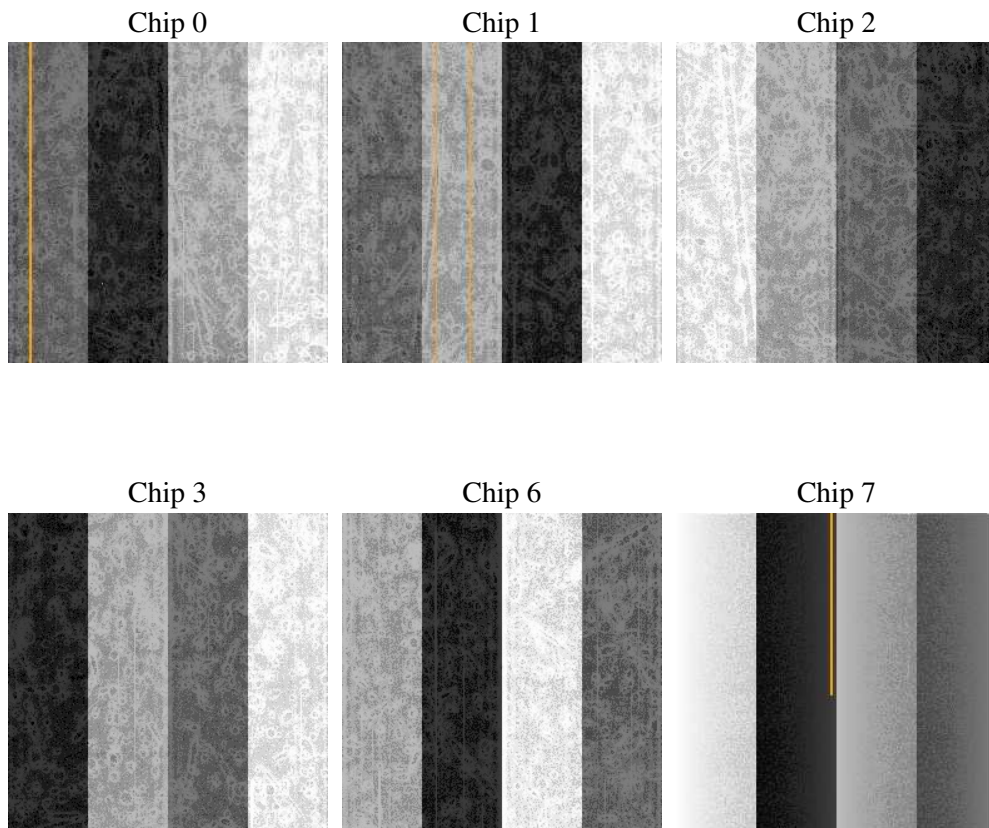
## 2 OBI Primary

### 2.1 OBI

#### 2.1.1 Images



#### 2.1.2 Bias



### 2.1.3 Parameters

obi_num	1
ascdsver	7.6.9
caldsver	3.2.3
date	2006-09-26T18:42:18
revision	2

sched_exp_time	0.0
ontime	4214.8047234416
ontime0	2040.7252016664
ontime1	2157.915361762
ontime2	1830.5911214948
ontime3	1943.7402415872
ontime6	2028.6020816565
ontime7	4214.8047234416
l1events	789885

### 2.1.4 Events

	ccd 0	ccd 1	ccd 2	ccd 3	ccd 6	ccd 7
level 1 events	110504	117496	101031	108798	115857	236199
rejected events	13592	14505	13486	14711	14499	28129
rejected %	12%	12%	13%	13%	12%	11%

	ccd 0	ccd 1	ccd 2	ccd 3	ccd 6	ccd 7
grade 0 events	53380	56725	48457	52609	55199	40109
	48%	48%	47%	48%	47%	16%
grade 1 events	299	342	292	321	348	131
	0%	0%	0%	0%	0%	0%
grade 2 events	17114	18327	15448	16535	17817	61391
	15%	15%	15%	15%	15%	25%
grade 3 events	6129	6564	5592	5978	6300	16264
	5%	5%	5%	5%	5%	6%
grade 4 events	6181	6563	5551	5976	6239	16191
	5%	5%	5%	5%	5%	6%
grade 5 events	968	1110	947	974	1126	3905
	0%	0%	0%	0%	0%	1%
grade 6 events	14326	15016	12696	13187	15993	74303
	12%	12%	12%	12%	13%	31%
grade 7 events	12107	12849	12048	13218	12835	23905
	10%	10%	11%	12%	11%	10%

## 2.2 Compared Parameters

Parameter	Planned	Actual	Parameter	Planned	Actual
Instrument	ACIS	ACIS	Obspar format version number	6	6
Detector	ACIS-012367	ACIS-012367	Obspar file type	PREDICTED	ACTUAL
Grating	NONE	NONE	Obspar update status	NONE	UPDATED
Data mode	FAINT	FAINT	On-chip summing requested	N	N
Observation mode	SECONDARY	SECONDARY	Subarray requested	NONE	NONE
Pointing RA	0	312.0228875660256	Alternating exposures requested	N	Y
Pointing Dec	0	-48.97563587118748	Primary exposure time	0.000000	4
Pointing Roll	0.0	25.46636462679719	Secondary exposure time	N/A	3.2
SIM focus pos (mm)	-0.782348	-0.6828225247311905	Duty cycle	N/A	1
SIM defocus (mm)	0	0.8505141146731063			
SIM translation stage pos (mm)	-233.592463	250.466033080201			
SIM translation stage offset (mm)	0	-0.01005468664627074			
Observation start time	143470710.199	143470709.17472			
Observation start date	2002-07-19T12:58:30	2002-07-19T12:58:29			
Observation end time	143482612.5	143482611.47521			
Observation end date	2002-07-19T16:16:52	2002-07-19T16:16:51			
Read mode	TIMED	TIMED			

## 2.3 Aspect



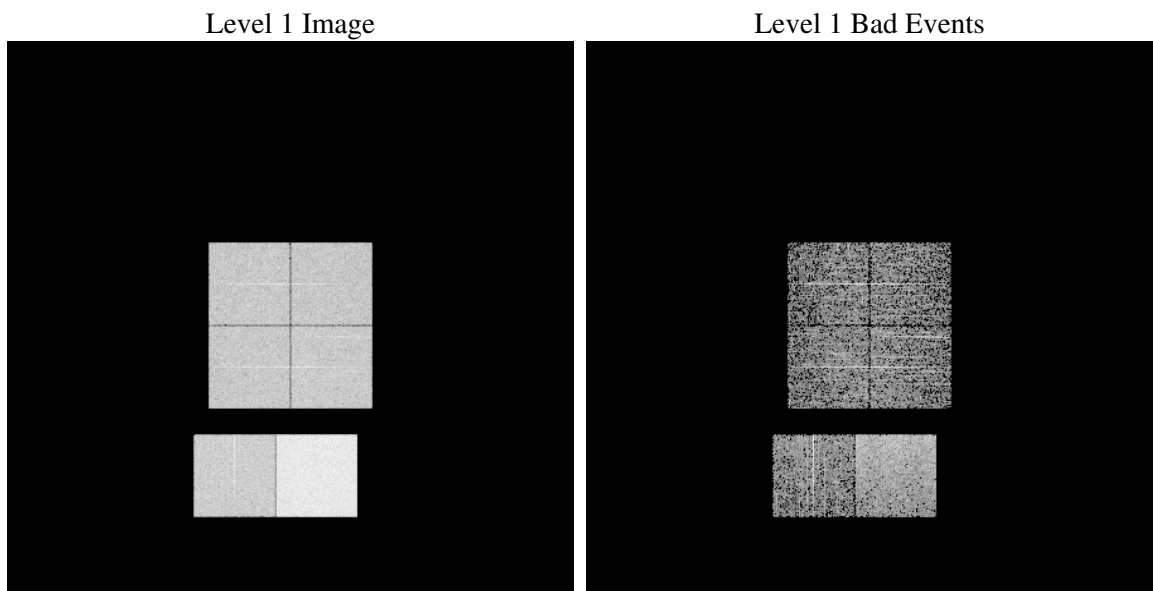
## 2.4 Star Slots

## 2.5 FID Slots

# 3 OBI Secondary

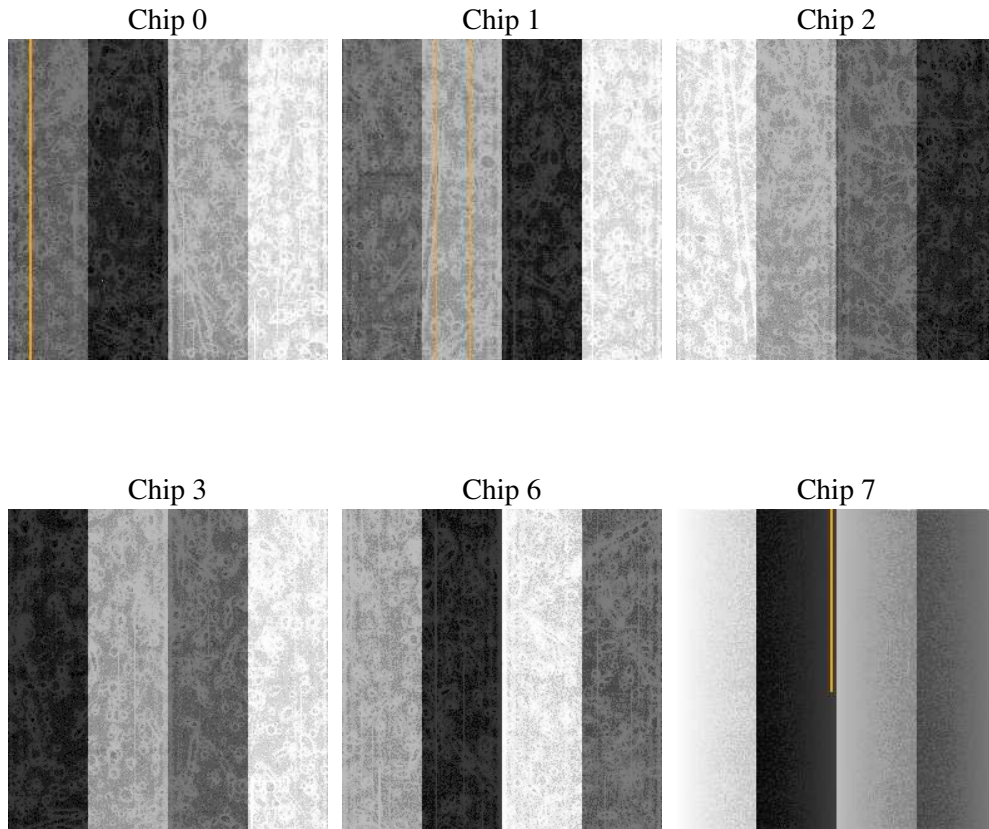
## 3.1 OBI

### 3.1.1 Images



### 3.1.2 Bias





### 3.1.3 Parameters

obi_num	1
ascdsver	7.6.9
caldsver	3.2.3
date	2006-09-26T18:40:16
revision	2

sched_exp_time	0.0
ontime	3380.4047110081
ontime0	1494.1194360256
ontime1	1435.7807161808
ontime2	1481.1552760601
ontime3	1542.7350358963
ontime6	1636.7251956463
ontime7	3380.4047110081
l1events	618559

### 3.1.4 Events

	ccd 0	ccd 1	ccd 2	ccd 3	ccd 6	ccd 7
level 1 events	82026	79504	83443	86787	96010	190789
rejected events	10449	10377	11652	12108	13268	23785
rejected %	12%	13%	13%	13%	13%	12%

	ccd 0	ccd 1	ccd 2	ccd 3	ccd 6	ccd 7
grade 0 events	39436	38111	39946	41794	45167	32001
	48%	47%	47%	48%	47%	16%
grade 1 events	210	215	230	225	236	86
	0%	0%	0%	0%	0%	0%
grade 2 events	12791	12342	12574	13147	14429	49404
	15%	15%	15%	15%	15%	25%
grade 3 events	4502	4422	4506	4728	5131	12936
	5%	5%	5%	5%	5%	6%
grade 4 events	4540	4353	4588	4674	5180	12804
	5%	5%	5%	5%	5%	6%
grade 5 events	721	734	711	807	872	3322
	0%	0%	0%	0%	0%	1%
grade 6 events	10478	10052	10331	10493	13001	60019
	12%	12%	12%	12%	13%	31%
grade 7 events	9348	9275	10557	10919	11994	20217
	11%	11%	12%	12%	12%	10%

## A Summary

### A.1 Status

V&V Scientist	Jen Lauer
V&V Date (YYYY-MM-DD)	2006.09.27
V&V Edition	1
V&V Disposition and Status	OK
V&V Charge Time	7.58823395

### A.2 Comments