

V&V Reference Report

L2 ASCDS Version : 7.6.9

Observation 61104 - L2 Version 001
Chandra X-Ray Center

L2 Processing Date : Sep 26 2006

Contents

1	Front	2
2	OBI	3
2.1	OBI	3
2.1.1	Images	3
2.1.2	Bias	3
2.1.3	Parameters	4
2.1.4	Events	4
2.2	Compared Parameters	5
2.3	Aspect	6
2.4	Star Slots	8
2.5	FID Slots	8
A	Summary	9
A.1	Status	9
A.2	Comments	9

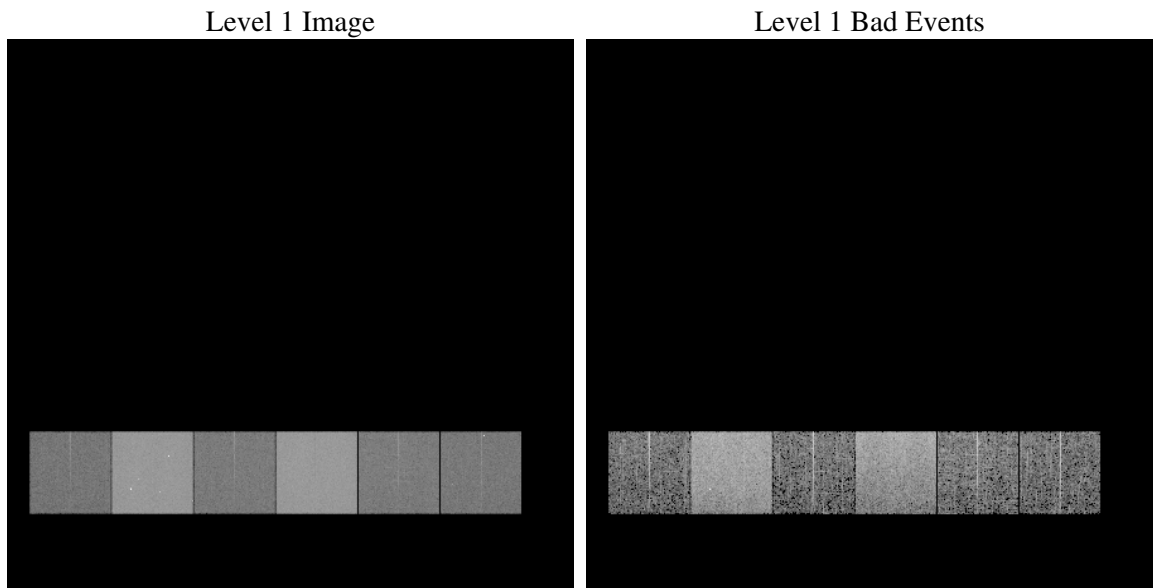
1 Front

seq_num	
obs_id	61104
title	ACIS-456789 diagnostics
observer	CHANDRA engineering request/realtime commanding
object	
dtcycle	0
cycle	P
ra_targ	0.0
dec_targ	0.0
ra_nom	277.38874580451
dec_nom	-23.822986769757
roll_nom	273.94619124
revision	2
ontime	7259.5468020737
livetime	7167.6220492916
ontime4	2803.3083022535
ontime5	7794.3478372693
ontime6	3026.898235172
ontime7	7259.5468020737
ontime8	3072.3549048901
ontime9	2948.9905733168
l2events	1208259

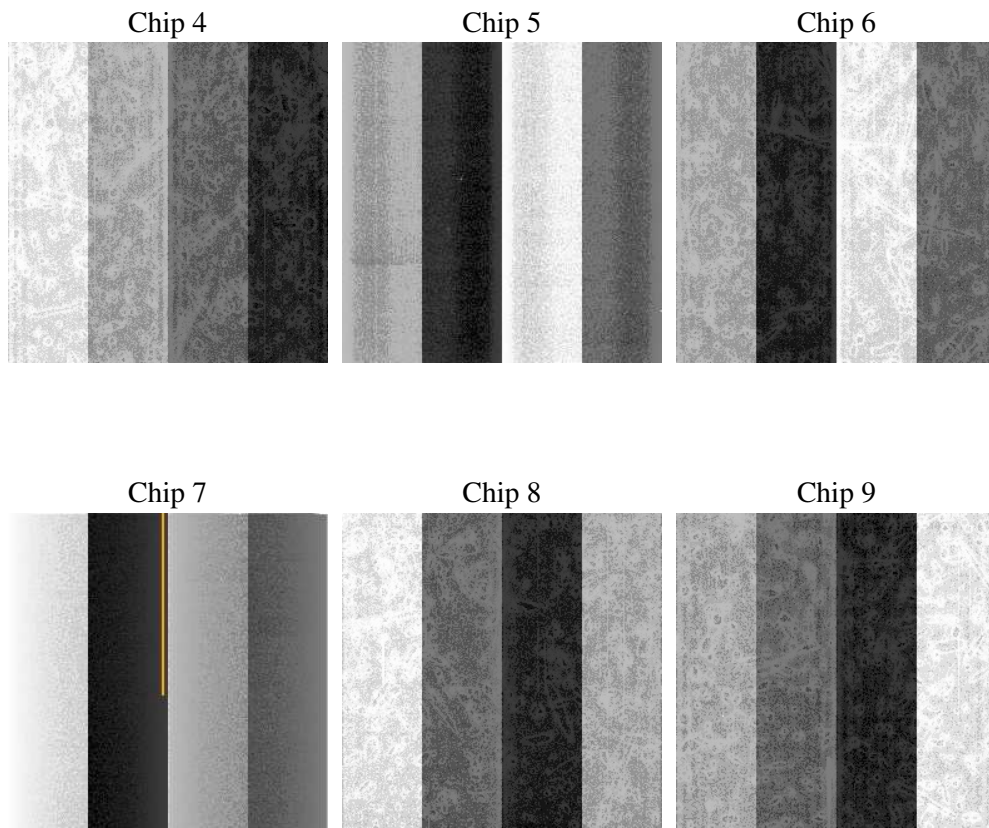
2 OBI

2.1 OBI

2.1.1 Images



2.1.2 Bias



2.1.3 Parameters

obi_num	0
ascdsver	7.6.9
caldbver	3.2.3
date	2006-09-26T21:48:15
revision	2

sched_exp_time	0.0
ontime	7259.8581350744
ontime4	2803.4965152442
ontime5	7794.6181302667
ontime6	3027.1274881661
ontime7	7259.8581350744
ontime8	3072.5020779073
ontime9	2949.3429463208
l1events	1445865

2.1.4 Events

	ccd 4	ccd 5	ccd 6	ccd 7	ccd 8	ccd 9
level 1 events	149415	388594	171502	396165	177970	162219
rejected events	18974	56377	19394	45803	22348	18727
rejected %	12%	14%	11%	11%	12%	11%

	ccd 4	ccd 5	ccd 6	ccd 7	ccd 8	ccd 9
grade 0 events	73965	44951	83032	65642	85758	78984
	49%	11%	48%	16%	48%	48%
grade 1 events	374	311	372	158	339	349
	0%	0%	0%	0%	0%	0%
grade 2 events	23129	156738	26495	104361	27682	25248
	15%	40%	15%	26%	15%	15%
grade 3 events	7878	11949	9438	26682	9796	8809
	5%	3%	5%	6%	5%	5%
grade 4 events	7985	11621	9322	26577	9752	8735
	5%	2%	5%	6%	5%	5%
grade 5 events	1223	6727	1551	6317	1613	1431
	0%	1%	0%	1%	0%	0%
grade 6 events	17484	106958	23821	127100	22634	21716
	11%	27%	13%	32%	12%	13%
grade 7 events	17377	49339	17471	39328	20396	16947
	11%	12%	10%	9%	11%	10%

2.2 Compared Parameters

Parameter	Planned	Actual	Parameter	Planned	Actual
Instrument	ACIS	ACIS	Obspar format version number	6	6
Detector	ACIS-456789	ACIS-456789	Obspar file type	PREDICTED	ACTUAL
Grating	NONE	NONE	Obspar update status	NONE	UPDATED
Data mode	FAINT	FAINT	On-chip summing requested	N	N
Observation mode	SECONDARY	SECONDARY	Subarray requested	NONE	NONE
Pointing RA	0	277.38874580451	Alternating exposures requested	N	N
Pointing Dec	0	-23.82298676975665	Primary exposure time	0.000000	3.2
Pointing Roll	0.0	273.946191239998			
SIM focus pos (mm)	-0.684267	-0.6828225247311905			
SIM defocus (mm)	0	0.8505141146731063			
SIM translation stage pos (mm)	-190.132523	250.466033080201			
SIM translation stage offset (mm)	0	-0.01005468664627074			
Observation start time	144377529.787	144377528.76201			
Observation start date	2002-07-30T00:52:10	2002-07-30T00:52:08			
Observation end time	144388392.737	144388391.71245			
Observation end date	2002-07-30T03:53:13	2002-07-30T03:53:11			
Read mode	TIMED	TIMED			

2.3 Aspect

2.4 Star Slots

2.5 FID Slots

A Summary

A.1 Status

V&V Scientist	Jen Lauer
V&V Date (YYYY-MM-DD)	2006.09.27
V&V Edition	1
V&V Disposition and Status	OK
V&V Charge Time	7.2595468

A.2 Comments