

# V&V Reference Report

## L2 ASCDS Version : 8.4.5

Observation 60984 - L2 Version 3  
Chandra X-Ray Center

L2 Processing Date : Oct 16 2012

## Contents

<b>1</b>	<b>Front</b>	<b>2</b>
<b>2</b>	<b>OBI</b>	<b>3</b>
2.1	OBI . . . . .	3
2.1.1	Images . . . . .	3
2.1.2	Bias . . . . .	3
2.1.3	Parameters . . . . .	4
2.1.4	Events . . . . .	4
2.2	Compared Parameters . . . . .	5
2.3	Star Slots . . . . .	6
2.4	FID Slots . . . . .	6
<b>A</b>	<b>Summary</b>	<b>7</b>
A.1	Status . . . . .	7
A.2	Comments . . . . .	7

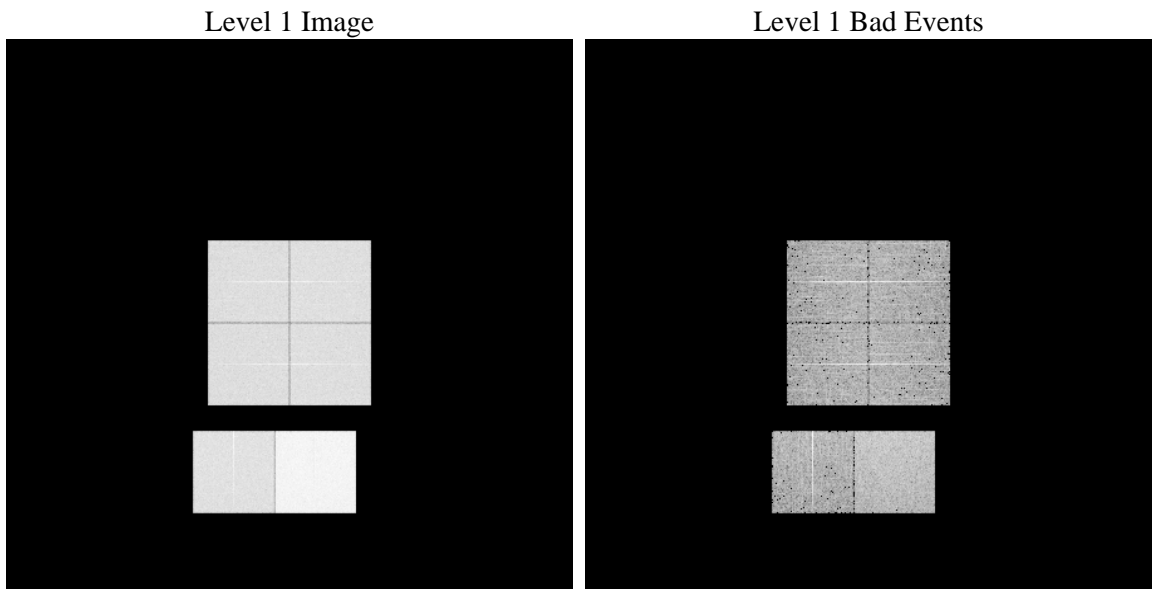
# 1 Front

seq_num	&#160	Sequence number
obs_id	60984	Observation id
title	ACIS-012367 diagnostics	Proposal title
observer	CHANDRA engineering request/realtime commanding	Principal investig
object	&#160	Source name
dtcycle	0	&#160
cycle	P	events from which exps? Prim/Second/Both
ra_targ	0.0	Observer's specified target RA [deg]
dec_targ	0.0	Observer's specified target Dec [deg]
ra_nom	331.03883983455	Nominal RA [deg]
dec_nom	-47.811636695301	Nominal Dec [deg]
roll_nom	303.1545734772	Nominal Roll [deg]
revision	3	Processing version of data
ontime	8411.8834780753	Sum of GTIs [s]
livetime	8305.3671444477	Livetime [s]
ontime0	3858.2739216089	Sum of GTIs [s]
ontime1	4065.657378912	Sum of GTIs [s]
ontime2	3777.1662509739	Sum of GTIs [s]
ontime3	3876.2737960815	Sum of GTIs [s]
ontime6	4149.8413922191	Sum of GTIs [s]
ontime7	8411.8834780753	Sum of GTIs [s]
l2events	1302405	Number of level 2 events

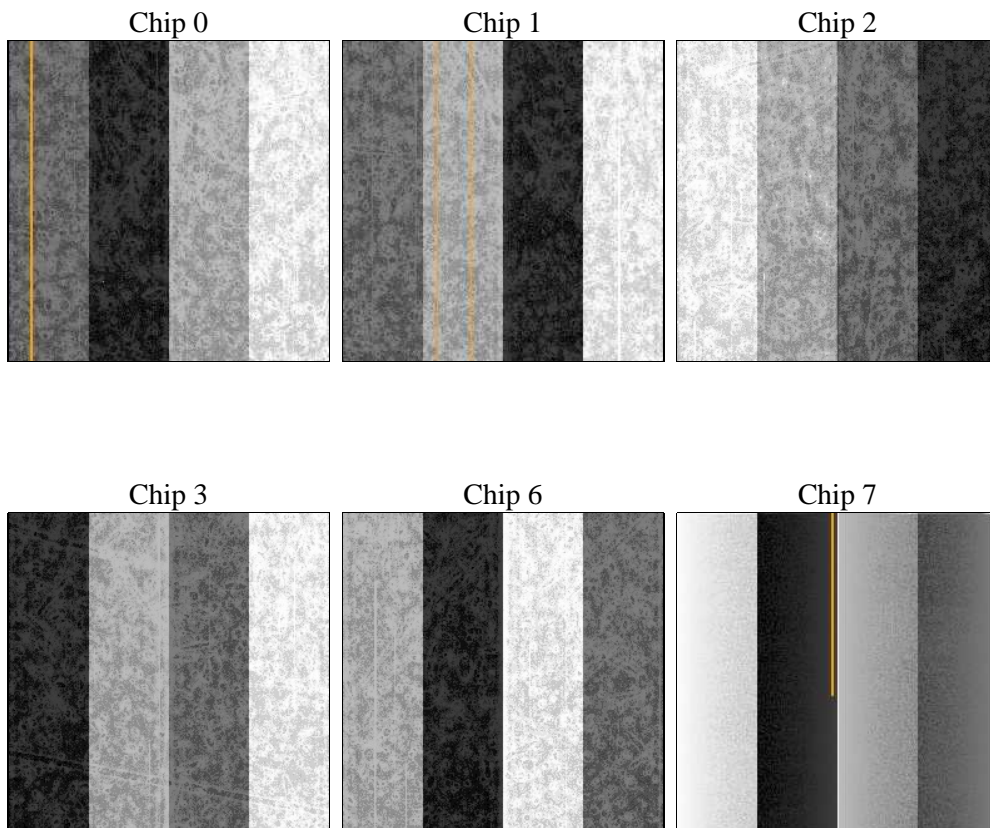
## 2 OBI

### 2.1 OBI

#### 2.1.1 Images



#### 2.1.2 Bias



### 2.1.3 Parameters

obi_num	0	Obi number	sched_exp_time	0.0	[s] Scheduled observation exposure time
ascdsver	8.4.5	Processing system revision	ontime	8411.8834780753	Sum of GTIs [s]
caldsver	4.5.2	&#160	ontime0	3858.2739216089	Sum of GTIs [s]
date	2012-10-16T22:08:12	Date and time of file creation	ontime1	4065.657378912	Sum of GTIs [s]
revision	3	Processing version of data	ontime2	3777.1662509739	Sum of GTIs [s]
			ontime3	3876.2737960815	Sum of GTIs [s]
			ontime6	4149.8413922191	Sum of GTIs [s]
			ontime7	8411.8834780753	Sum of GTIs [s]
			l1events	1552918	Number of level 1 events

### 2.1.4 Events

	ccd 0	ccd 1	ccd 2	ccd 3	ccd 6	ccd 7		ccd 0	ccd 1	ccd 2	ccd 3	ccd 6	ccd 7
level 1 events	211990	220952	208760	215469	236900	458847	grade 0 events	101179	106053	101449	104822	112297	104008
rejected events	29136	28586	28969	29169	30580	46902		47%	47%	48%	48%	47%	22%
rejected %	13%	12%	13%	13%	12%	10%	grade 1 events	567	514	633	613	543	280
								0%	0%	0%	0%	0%	0%
							grade 2 events	32242	34126	30122	32048	35953	90938
								15%	15%	14%	14%	15%	19%
							grade 3 events	11699	12141	11584	12181	13060	41369
								5%	5%	5%	5%	5%	9%
							grade 4 events	11796	12268	11811	12284	12802	41523
								5%	5%	5%	5%	5%	9%
							grade 5 events	1924	1955	1863	2002	2299	8709
								0%	0%	0%	0%	0%	1%
							grade 6 events	26926	28804	25816	25986	33473	136282
								12%	13%	12%	12%	14%	29%
							grade 7 events	25657	25091	25482	25533	26473	35738
								12%	11%	12%	11%	11%	7%

## 2.2 Compared Parameters

Parameter	Planned	Actual	Parameter	Planned	Actual
Instrument	ACIS	ACIS	Obspar format version number	7	7
Detector	ACIS-012367	ACIS-012367	Obspar file type	PREDICTED	ACTUAL
Grating	NONE	NONE	Obspar update status	NONE	UPDATED
Data mode	FAINT	FAINT	On-chip summing requested	N	N
Observation mode	SECONDARY	SECONDARY	Subarray requested	NONE	NONE
[deg] Pointing RA	0	331.0388398345549	Alternating exposures requested	N	N
[deg] Pointing Dec	0	-47.8116366953007	[s] Primary exposure time	0.000000	3.2
[deg] Pointing Roll	0.0	303.1545734772002			
[mm] SIM focus pos	-0.782348	-0.6828225247311905			
[mm] SIM defocus	0	0.8505141146731063			
[mm] SIM translation stage pos	-233.592463	250.466033080201			
[mm] SIM translation stage offset	0	-0.01005468664627074			
[s] Observation start time (MET)	151738337.990853	151738336.96614			
Observation start date	2002-10-23T05:32:18	2002-10-23T05:32:16			
[s] Observation end time (MET)	151749526.891317	151749525.8666			
Observation end date	2002-10-23T08:38:47	2002-10-23T08:38:45			
Read mode	TIMED	TIMED			

## **2.3 Star Slots**

## **2.4 FID Slots**

## A Summary

### A.1 Status

V&V Scientist	Beth Sundheim
V&V Date (YYYY-MM-DD)	2012.10.25
V&V Edition	1
V&V Disposition and Status	OK
V&V Charge Time	8.4118834780753

### A.2 Comments