

V&V Reference Report

L2 ASCDS Version : 7.6.9

Observation 60984 - L2 Version 001
Chandra X-Ray Center

L2 Processing Date : Oct 7 2006

Contents

1	Front	2
2	OBI	3
2.1	OBI	3
2.1.1	Images	3
2.1.2	Bias	3
2.1.3	Parameters	4
2.1.4	Events	4
2.2	Compared Parameters	5
2.3	Aspect	6
2.4	Star Slots	8
2.5	FID Slots	8
A	Summary	9
A.1	Status	9
A.2	Comments	9

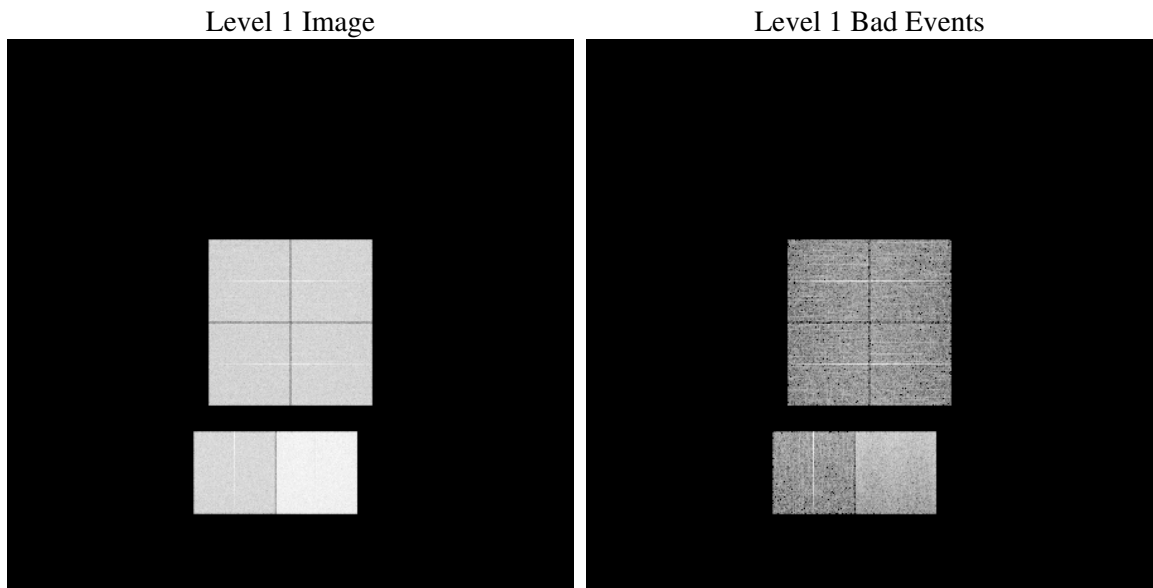
1 Front

seq_num	
obs_id	60984
title	ACIS-012367 diagnostics
observer	CHANDRA engineering request/realtime commanding
object	
dtcycle	0
cycle	P
ra_targ	0.0
dec_targ	0.0
ra_nom	331.03883985156
dec_nom	-47.811636696177
roll_nom	303.15457349135
revision	2
ontime	8412.7999686599
livetime	8306.2720298767
ontime0	3859.2314521968
ontime1	4066.6559495032
ontime2	3778.2058615685
ontime3	3875.5492466688
ontime6	4150.9220427871
ontime7	8412.7999686599
l2events	1287932

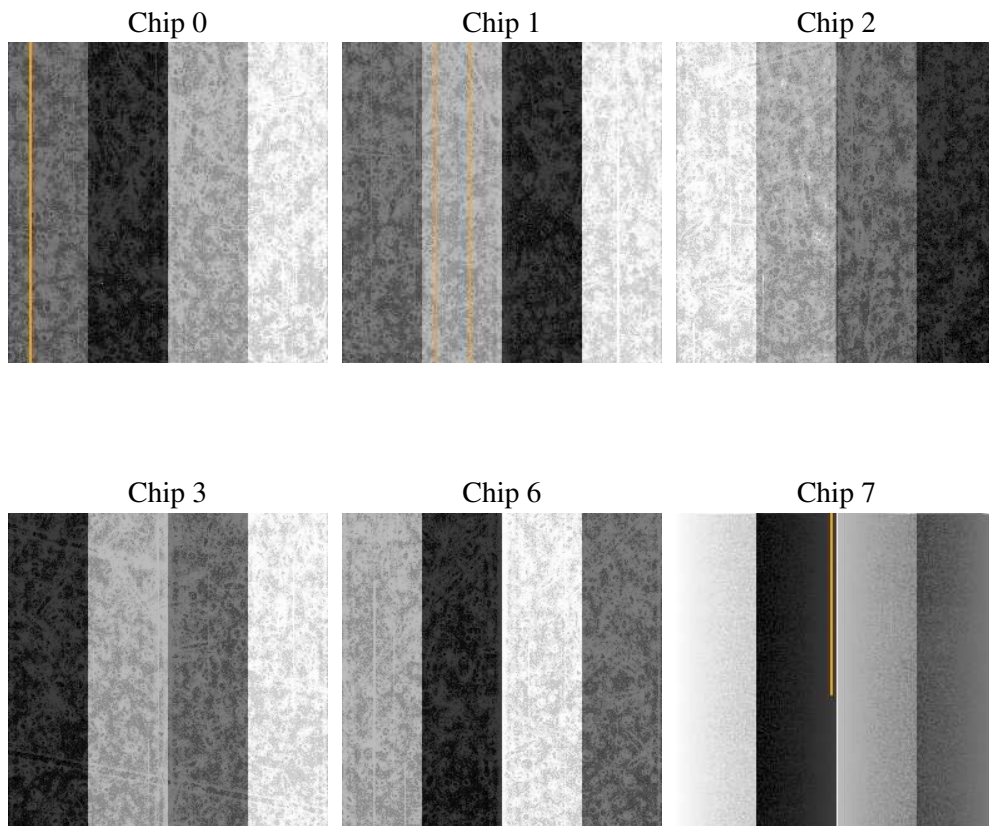
2 OBI

2.1 OBI

2.1.1 Images



2.1.2 Bias



2.1.3 Parameters

obi_num	0
ascdsver	7.6.9
caldbver	3.2.3
date	2006-10-07T16:48:54
revision	2

sched_exp_time	0.0
ontime	8455.7709909976
ontime0	3879.5156528652
ontime1	4086.9401701093
ontime2	3798.4900921285
ontime3	3898.9610262215
ontime6	4174.447213769
ontime7	8455.7709909976
l1events	1552918

2.1.4 Events

	ccd 0	ccd 1	ccd 2	ccd 3	ccd 6	ccd 7
level 1 events	211990	220952	208760	215469	236900	458847
rejected events	28984	28425	28832	29172	30409	62103
rejected %	13%	12%	13%	13%	12%	13%

	ccd 0	ccd 1	ccd 2	ccd 3	ccd 6	ccd 7
grade 0 events	101166	106033	101418	104814	112281	71481
	47%	47%	48%	48%	47%	15%
grade 1 events	566	513	629	613	543	169
	0%	0%	0%	0%	0%	0%
grade 2 events	32255	34146	30154	32055	35968	121146
	15%	15%	14%	14%	15%	26%
grade 3 events	11695	12136	11576	12175	13053	28955
	5%	5%	5%	5%	5%	6%
grade 4 events	11794	12267	11806	12279	12795	28881
	5%	5%	5%	5%	5%	6%
grade 5 events	1922	1950	1864	1997	2299	7737
	0%	0%	0%	0%	0%	1%
grade 6 events	26929	28809	25824	25995	33484	148234
	12%	13%	12%	12%	14%	32%
grade 7 events	25663	25098	25489	25541	26477	52244
	12%	11%	12%	11%	11%	11%

2.2 Compared Parameters

Parameter	Planned	Actual	Parameter	Planned	Actual
Instrument	ACIS	ACIS	Obspar format version number	6	6
Detector	ACIS-012367	ACIS-012367	Obspar file type	PREDICTED	ACTUAL
Grating	NONE	NONE	Obspar update status	NONE	UPDATED
Data mode	FAINT	FAINT	On-chip summing requested	N	N
Observation mode	SECONDARY	SECONDARY	Subarray requested	NONE	NONE
Pointing RA	0	331.0388398515611	Alternating exposures requested	N	N
Pointing Dec	0	-47.81163669617736	Primary exposure time	0.000000	3.2
Pointing Roll	0.0	303.1545734913491			
SIM focus pos (mm)	-0.782348	-0.6828225247311905			
SIM defocus (mm)	0	0.8505141146731063			
SIM translation stage pos (mm)	-233.592463	250.466033080201			
SIM translation stage offset (mm)	0	-0.01005468664627074			
Observation start time	151738337.990853	151738336.96614			
Observation start date	2002-10-23T05:32:18	2002-10-23T05:32:16			
Observation end time	151749526.891317	151749525.8666			
Observation end date	2002-10-23T08:38:47	2002-10-23T08:38:45			
Read mode	TIMED	TIMED			

2.3 Aspect

2.4 Star Slots

2.5 FID Slots

A Summary

A.1 Status

V&V Scientist	Jen Lauer
V&V Date (YYYY-MM-DD)	2006.10.08
V&V Edition	1
V&V Disposition and Status	OK
V&V Charge Time	8.41279996

A.2 Comments