

V&V Reference Report

L2 ASCDS Version : 7.6.9

Observation 60914 - L2 Version 001
Chandra X-Ray Center

L2 Processing Date : Jan 19 2007

Contents

1	Front	2
2	OBI	3
2.1	OBI	3
2.1.1	Images	3
2.1.2	Bias	3
2.1.3	Parameters	4
2.1.4	Events	4
2.2	Compared Parameters	5
2.3	Star Slots	6
2.4	FID Slots	6
A	Summary	7
A.1	Status	7
A.2	Comments	7

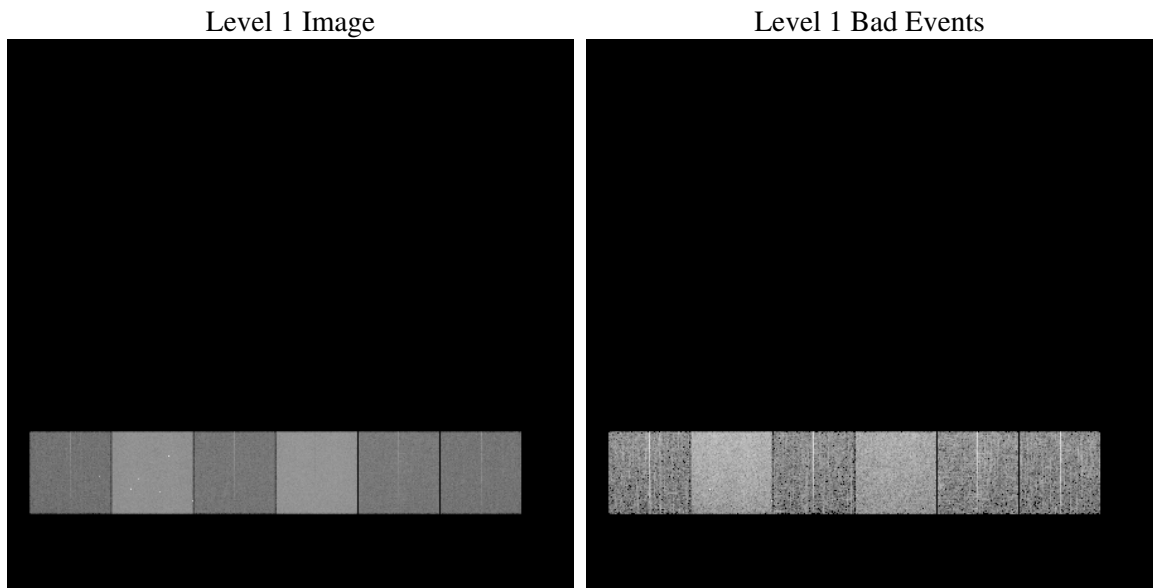
1 Front

seq_num	
obs_id	60914
title	ACIS-456789 diagnostics
observer	CHANDRA engineering request/realtime commanding
object	
dtcycle	0
cycle	P
ra_targ	0.0
dec_targ	0.0
ra_nom	41.228650733662
dec_nom	-17.208274223337
roll_nom	310.29963114822
revision	2
ontime	8377.599968791
livetime	8271.5177536011
ontime4	3278.8877019286
ontime5	8377.599968791
ontime6	3538.1273400187
ontime7	8377.599968791
ontime8	3729.4291351736
ontime9	3509.6545444727
l2events	1278440

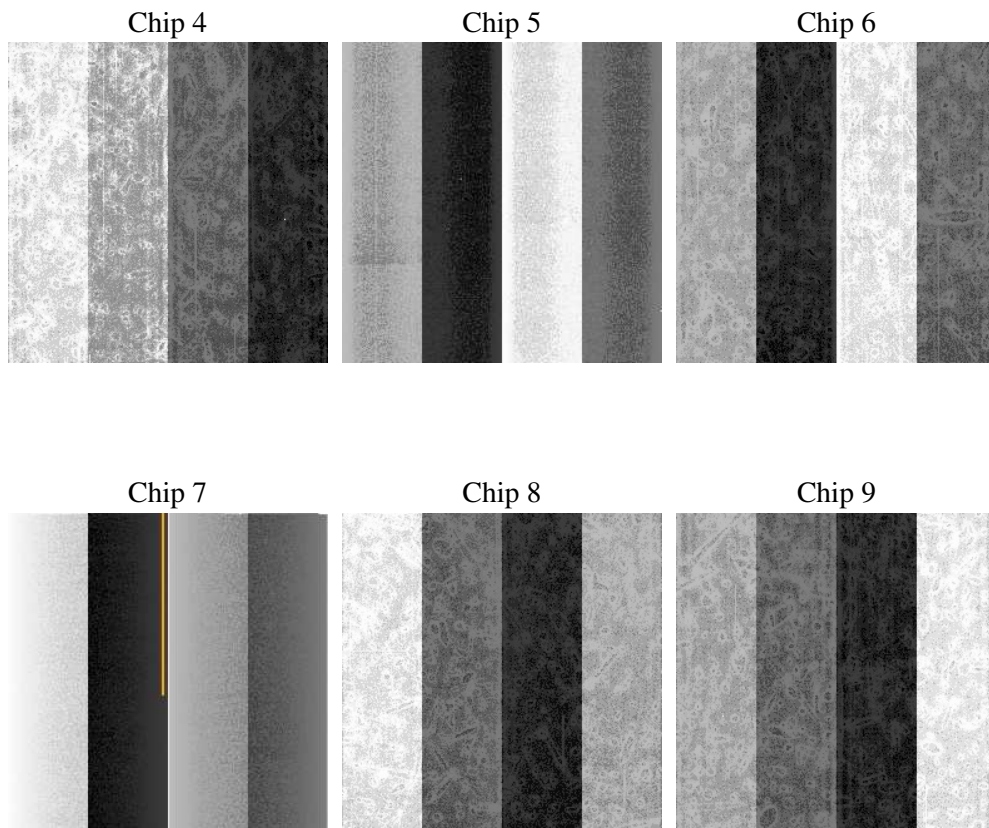
2 OBI

2.1 OBI

2.1.1 Images



2.1.2 Bias



2.1.3 Parameters

obi_num	0
ascdsver	7.6.10
caldbver	3.3.0
date	2007-01-19T19:03:28
revision	2

sched_exp_time	0.0
ontime	8377.599968791
ontime4	3278.8877019286
ontime5	8377.599968791
ontime6	3538.1273400187
ontime7	8377.599968791
ontime8	3729.4291351736
ontime9	3509.6545444727
l1events	1545830

2.1.4 Events

	ccd 4	ccd 5	ccd 6	ccd 7	ccd 8	ccd 9
level 1 events	163924	390905	186356	426699	198967	178979
rejected events	25303	57181	25159	46019	28247	25395
rejected %	15%	14%	13%	10%	14%	14%

	ccd 4	ccd 5	ccd 6	ccd 7	ccd 8	ccd 9
grade 0 events	81295	79772	88902	96869	94788	85703
	49%	20%	47%	22%	47%	47%
grade 1 events	587	329	402	238	423	450
	0%	0%	0%	0%	0%	0%
grade 2 events	22579	121840	28013	84927	30041	26593
	13%	31%	15%	19%	15%	14%
grade 3 events	9378	20496	10035	39098	11131	9760
	5%	5%	5%	9%	5%	5%
grade 4 events	9050	20622	10101	39044	11039	9724
	5%	5%	5%	9%	5%	5%
grade 5 events	1545	9631	1743	8393	2049	1828
	0%	2%	0%	1%	1%	1%
grade 6 events	17741	94517	25803	124852	25319	23069
	10%	24%	13%	29%	12%	12%
grade 7 events	21749	43698	21357	33278	24177	21852
	13%	11%	11%	7%	12%	12%

2.2 Compared Parameters

Parameter	Planned	Actual	Parameter	Planned	Actual
Instrument	ACIS	ACIS	Obspar format version number	6	6
Detector	ACIS-456789	ACIS-456789	Obspar file type	PREDICTED	ACTUAL
Grating	NONE	NONE	Obspar update status	NONE	UPDATED
Data mode	FAINT	FAINT	On-chip summing requested	N	N
Observation mode	SECONDARY	SECONDARY	Subarray requested	NONE	NONE
Pointing RA	0	41.22865073366204	Alternating exposures requested	N	N
Pointing Dec	0	-17.20827422333678	Primary exposure time	3.2	3.2
Pointing Roll	0.0	310.299631148216			
SIM focus pos (mm)	-0.684267	-0.6828225247311905			
SIM defocus (mm)	0	0.8505141146731063			
SIM translation stage pos (mm)	-190.132523	250.4635187648994			
SIM translation stage offset (mm)	0	-0.007540371344731511			
Observation start time	156749710.799504	156749709.77481			
Observation start date	2002-12-20T05:35:11	2002-12-20T05:35:09			
Observation end time	156772471.950469	156772470.92576			
Observation end date	2002-12-20T11:54:32	2002-12-20T11:54:30			
Read mode	TIMED	TIMED			

2.3 Star Slots

2.4 FID Slots

A Summary

A.1 Status

V&V Scientist	Beth Sundheim
V&V Date (YYYY-MM-DD)	2007.01.19
V&V Edition	1
V&V Disposition and Status	OK
V&V Charge Time	8.37759996

A.2 Comments