

V&V Reference Report

L2 ASCDS Version : 7.6.9

Observation 60884 - L2 Version 001
Chandra X-Ray Center

L2 Processing Date : Oct 19 2006

Contents

1	Front	2
2	OBI	3
2.1	OBI	3
2.1.1	Images	3
2.1.2	Bias	3
2.1.3	Parameters	4
2.1.4	Events	4
2.2	Compared Parameters	5
2.3	Aspect	6
2.4	Star Slots	8
2.5	FID Slots	8
A	Summary	9
A.1	Status	9
A.2	Comments	9

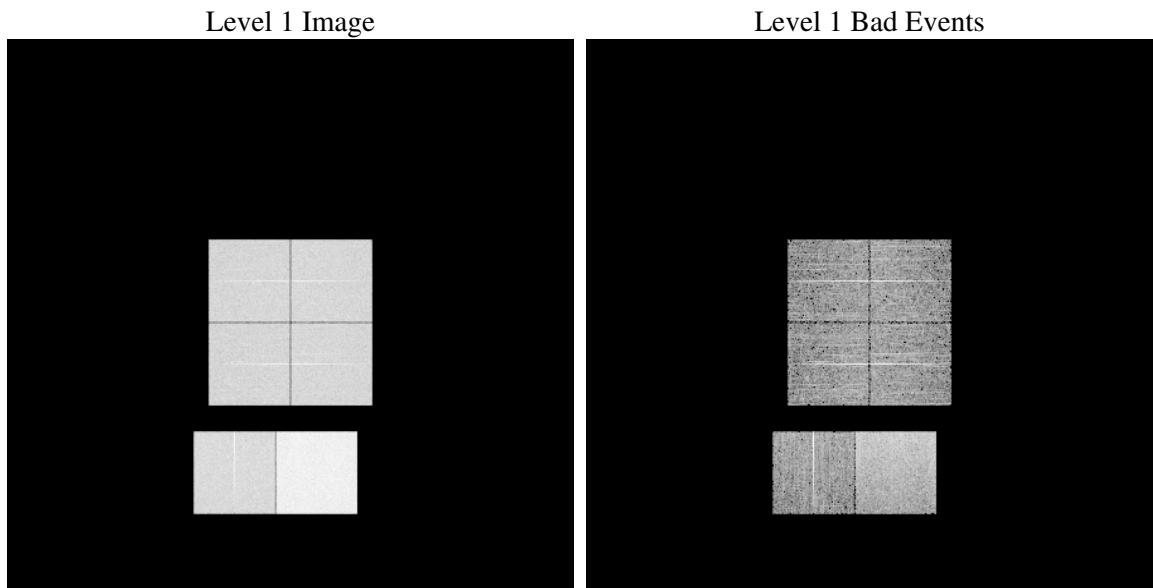
1 Front

seq_num	
obs_id	60884
title	ACIS-012367 diagnostics
observer	CHANDRA engineering request/realtime commanding
object	
dtcycle	0
cycle	P
ra_targ	0.0
dec_targ	0.0
ra_nom	49.774848956743
dec_nom	-5.5143760954593
roll_nom	297.03244114404
revision	2
ontime	8463.9999684691
livetime	8356.8237044595
ontime0	4458.9185584188
ontime1	4493.8071202934
ontime2	4277.5044709742
ontime3	4374.5706734359
ontime6	4743.3644701838
ontime7	8463.9999684691
l2events	1279701

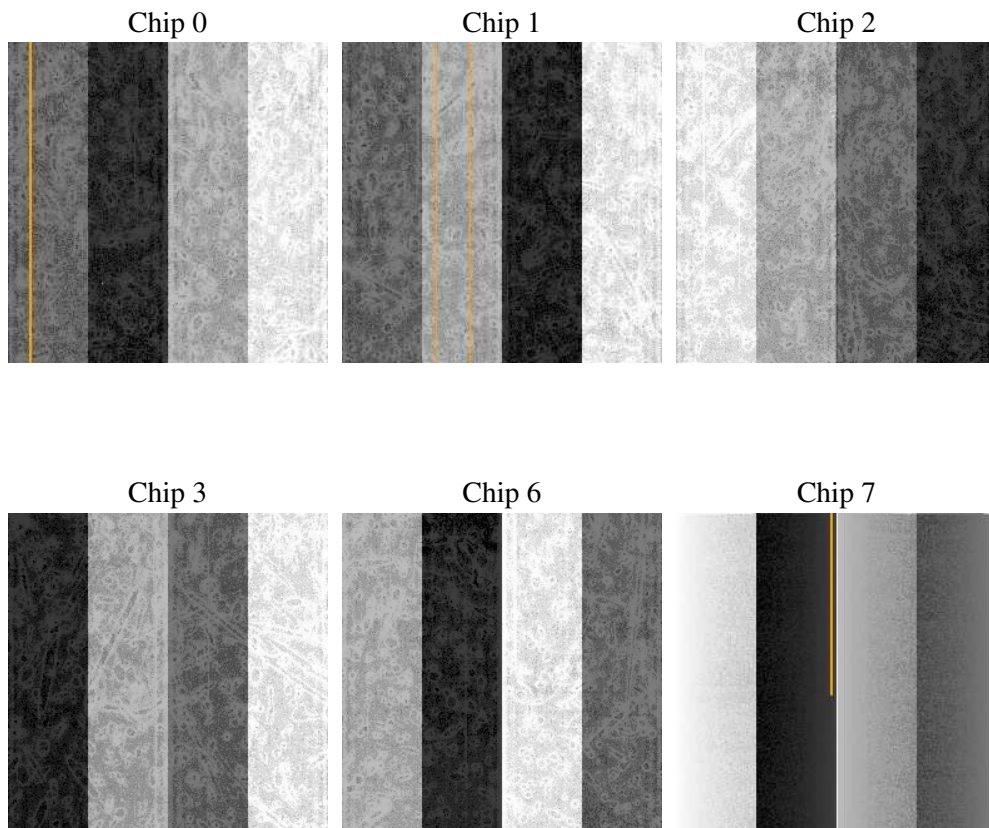
2 OBI

2.1 OBI

2.1.1 Images



2.1.2 Bias



2.1.3 Parameters

obi_num	0
ascdsver	7.6.9
caldbver	3.2.3
date	2006-10-19T03:07:47
revision	2

sched_exp_time	0.0
ontime	8465.4974338412
ontime0	4459.6547798812
ontime1	4495.3045856655
ontime2	4278.1586124301
ontime3	4375.388974905
ontime6	4744.8619355559
ontime7	8465.4974338412
l1events	1547927

2.1.4 Events

	ccd 0	ccd 1	ccd 2	ccd 3	ccd 6	ccd 7
level 1 events	218097	222544	215283	220768	245054	426181
rejected events	28020	29948	30182	30818	32234	59049
rejected %	12%	13%	14%	13%	13%	13%

	ccd 0	ccd 1	ccd 2	ccd 3	ccd 6	ccd 7
grade 0 events	104855	105936	103904	107038	115569	66153
	48%	47%	48%	48%	47%	15%
grade 1 events	531	516	604	580	578	152
	0%	0%	0%	0%	0%	0%
grade 2 events	33297	33806	31224	32157	36423	110484
	15%	15%	14%	14%	14%	25%
grade 3 events	12269	12014	12043	12400	13256	27142
	5%	5%	5%	5%	5%	6%
grade 4 events	12198	12272	11940	12326	13276	26750
	5%	5%	5%	5%	5%	6%
grade 5 events	2069	2110	2011	2128	2331	7695
	0%	0%	0%	0%	0%	1%
grade 6 events	27458	28568	25990	26029	34296	136603
	12%	12%	12%	11%	13%	32%
grade 7 events	25420	27322	27567	28110	29325	51202
	11%	12%	12%	12%	11%	12%

2.2 Compared Parameters

Parameter	Planned	Actual	Parameter	Planned	Actual
Instrument	ACIS	ACIS	Obspar format version number	6	6
Detector	ACIS-012367	ACIS-012367	Obspar file type	PREDICTED	ACTUAL
Grating	NONE	NONE	Obspar update status	NONE	UPDATED
Data mode	FAINT	FAINT	On-chip summing requested	N	N
Observation mode	SECONDARY	SECONDARY	Subarray requested	NONE	NONE
Pointing RA	0	49.77484895674318	Alternating exposures requested	N	N
Pointing Dec	0	-5.514376095459276	Primary exposure time	3.2	3.2
Pointing Roll	0.0	297.0324411440394			
SIM focus pos (mm)	-0.782348	-0.7809083437167272			
SIM defocus (mm)	0	0.7524282956875696			
SIM translation stage pos (mm)	-233.592463	250.466033080201			
SIM translation stage offset (mm)	0	-0.01005468664627074			
Observation start time	158579319.47598	158579318.45127			
Observation start date	2003-01-10T09:48:39	2003-01-10T09:48:38			
Observation end time	158602265.12694	158602264.10223			
Observation end date	2003-01-10T16:11:05	2003-01-10T16:11:04			
Read mode	TIMED	TIMED			

2.3 Aspect

2.4 Star Slots

2.5 FID Slots

A Summary

A.1 Status

V&V Scientist	Jen Lauer
V&V Date (YYYY-MM-DD)	2006.10.19
V&V Edition	1
V&V Disposition and Status	OK
V&V Charge Time	8.46399996

A.2 Comments