

V&V Reference Report

L2 ASCDS Version : 8.4.5

Observation 60864 - L2 Version 3
Chandra X-Ray Center

L2 Processing Date : Oct 22 2012

Contents

1	Front	2
2	OBI	3
2.1	OBI	3
2.1.1	Images	3
2.1.2	Bias	3
2.1.3	Parameters	4
2.1.4	Events	4
2.2	Compared Parameters	5
2.3	Star Slots	6
2.4	FID Slots	6
A	Summary	7
A.1	Status	7
A.2	Comments	7

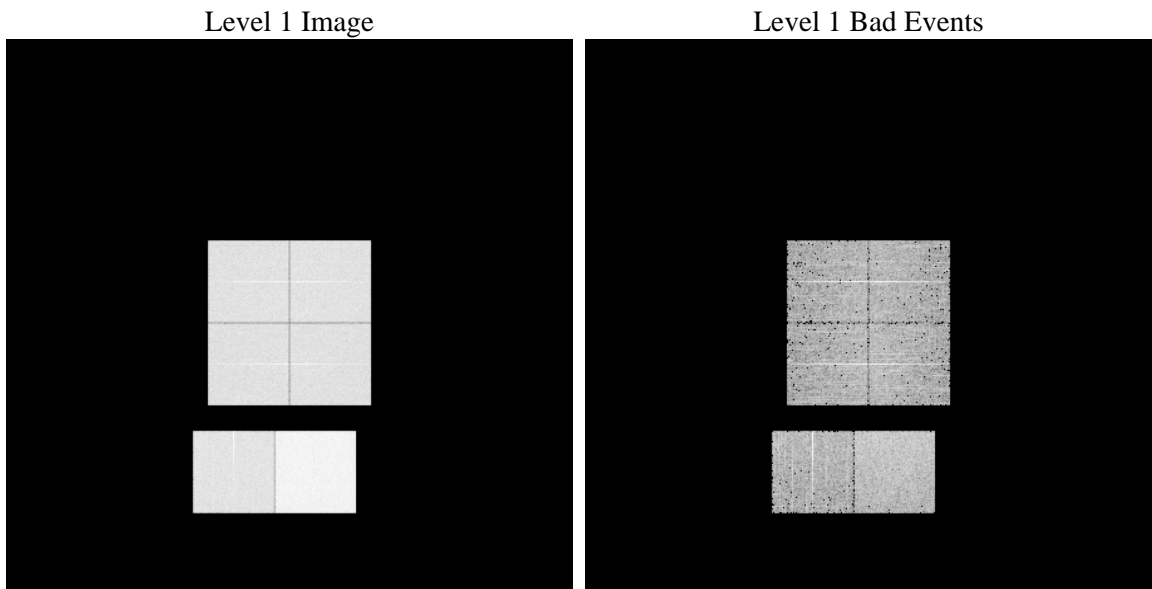
1 Front

seq_num	 	Sequence number
obs_id	60864	Observation id
title	ACIS-012367 diagnostics	Proposal title
observer	CHANDRA engineering request/realtime commanding	Principal investig
object	 	Source name
dtcycle	0	
cycle	P	events from which exps? Prim/Second/Both
ra_targ	0.0	Observer's specified target RA [deg]
dec_targ	0.0	Observer's specified target Dec [deg]
ra_nom	356.3268224686	Nominal RA [deg]
dec_nom	10.688844290722	Nominal Dec [deg]
roll_nom	304.13881214146	Nominal Roll [deg]
revision	3	Processing version of data
ontime	7795.1999709606	Sum of GTIs [s]
livetime	7696.4924552224	Livetime [s]
ontime0	4267.7133182883	Sum of GTIs [s]
ontime1	4353.2938863337	Sum of GTIs [s]
ontime2	4050.6488378346	Sum of GTIs [s]
ontime3	4064.8474858701	Sum of GTIs [s]
ontime6	4366.257407546	Sum of GTIs [s]
ontime7	7795.1999709606	Sum of GTIs [s]
l2events	1192347	Number of level 2 events

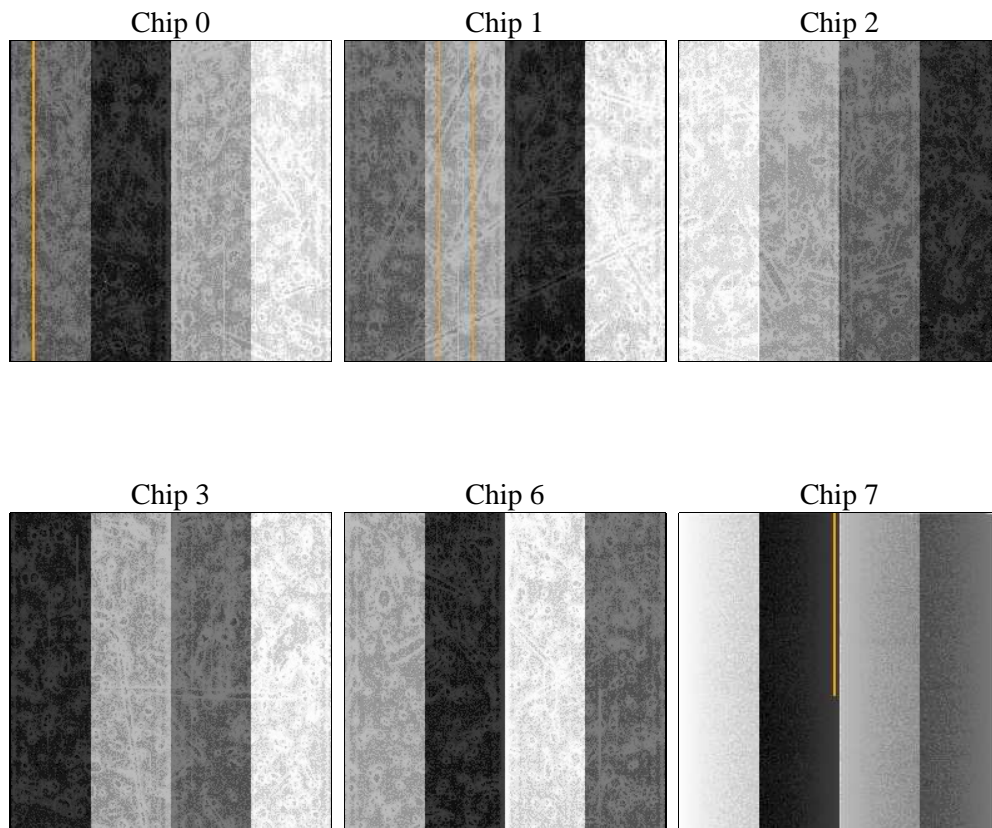
2 OBI

2.1 OBI

2.1.1 Images



2.1.2 Bias



2.1.3 Parameters

obi_num	0	Obi number	sched_exp_time	0.0	[s] Scheduled observation exposure time
ascdsver	8.4.5	Processing system revision	ontime	7795.1999709606	Sum of GTIs [s]
caldbver	4.5.2	 	ontime0	4267.7133182883	Sum of GTIs [s]
date	2012-10-22T05:58:12	Date and time of file creation	ontime1	4353.2938863337	Sum of GTIs [s]
revision	3	Processing version of data	ontime2	4050.6488378346	Sum of GTIs [s]
			ontime3	4064.8474858701	Sum of GTIs [s]
			ontime6	4366.257407546	Sum of GTIs [s]
			ontime7	7795.1999709606	Sum of GTIs [s]
			l1events	1427302	Number of level 1 events

2.1.4 Events

	ccd 0	ccd 1	ccd 2	ccd 3	ccd 6	ccd 7		ccd 0	ccd 1	ccd 2	ccd 3	ccd 6	ccd 7
level 1 events	206748	210495	201168	202068	221988	384835	grade 0 events	99394	100913	97537	98083	105475	86142
rejected events	26828	27517	27861	29113	29269	40314		48%	47%	48%	48%	47%	22%
rejected %	12%	13%	13%	14%	13%	10%	grade 1 events	508	475	542	568	462	228
								0%	0%	0%	0%	0%	0%
							grade 2 events	31291	32250	29276	29288	33348	76287
								15%	15%	14%	14%	15%	19%
							grade 3 events	11561	11791	11312	11211	11867	35070
								5%	5%	5%	5%	5%	9%
							grade 4 events	11659	11657	11128	11334	12091	34463
								5%	5%	5%	5%	5%	8%
							grade 5 events	1864	1929	1766	1903	2126	7747
								0%	0%	0%	0%	0%	2%
							grade 6 events	26015	26510	24054	23182	30106	112705
								12%	12%	11%	11%	13%	29%
							grade 7 events	24456	24970	25553	26499	26513	32193
								11%	11%	12%	13%	11%	8%

2.2 Compared Parameters

Parameter	Planned	Actual	Parameter	Planned	Actual
Instrument	ACIS	ACIS	Obspar format version number	7	7
Detector	ACIS-012367	ACIS-012367	Obspar file type	PREDICTED	ACTUAL
Grating	NONE	NONE	Obspar update status	NONE	UPDATED
Data mode	FAINT	FAINT	On-chip summing requested	N	N
Observation mode	SECONDARY	SECONDARY	Subarray requested	NONE	NONE
[deg] Pointing RA	0	356.3268224685958	Alternating exposures requested	N	N
[deg] Pointing Dec	0	10.68884429072232	[s] Primary exposure time	0.000000	3.2
[deg] Pointing Roll	0.0	304.1388121414592			
[mm] SIM focus pos	-0.782348	-0.7809083437167272			
[mm] SIM defocus	0	0.7524282956875696			
[mm] SIM translation stage pos	-233.592463	250.466033080201			
[mm] SIM translation stage offset	0	-0.01005468664627074			
[s] Observation start time (MET)	160601148.460679	160601147.43596			
Observation start date	2003-02-02T19:25:48	2003-02-02T19:25:47			
[s] Observation end time (MET)	160617845.71138	160617844.68666			
Observation end date	2003-02-03T00:04:06	2003-02-03T00:04:04			
Read mode	TIMED	TIMED			

2.3 Star Slots

2.4 FID Slots

A Summary

A.1 Status

V&V Scientist	Beth Sundheim
V&V Date (YYYY-MM-DD)	2012.11.27
V&V Edition	1
V&V Disposition and Status	OK
V&V Charge Time	7.7951999709606

A.2 Comments