

V&V Reference Report

L2 ASCDS Version : 8.4.5

Observation 60684 - L2 Version 3
Chandra X-Ray Center

L2 Processing Date : Oct 30 2012

Contents

1	Front	2
2	OBI	3
2.1	OBI	3
2.1.1	Images	3
2.1.2	Bias	3
2.1.3	Parameters	4
2.1.4	Events	4
2.2	Compared Parameters	5
2.3	Star Slots	6
2.4	FID Slots	6
A	Summary	7
A.1	Status	7
A.2	Comments	7

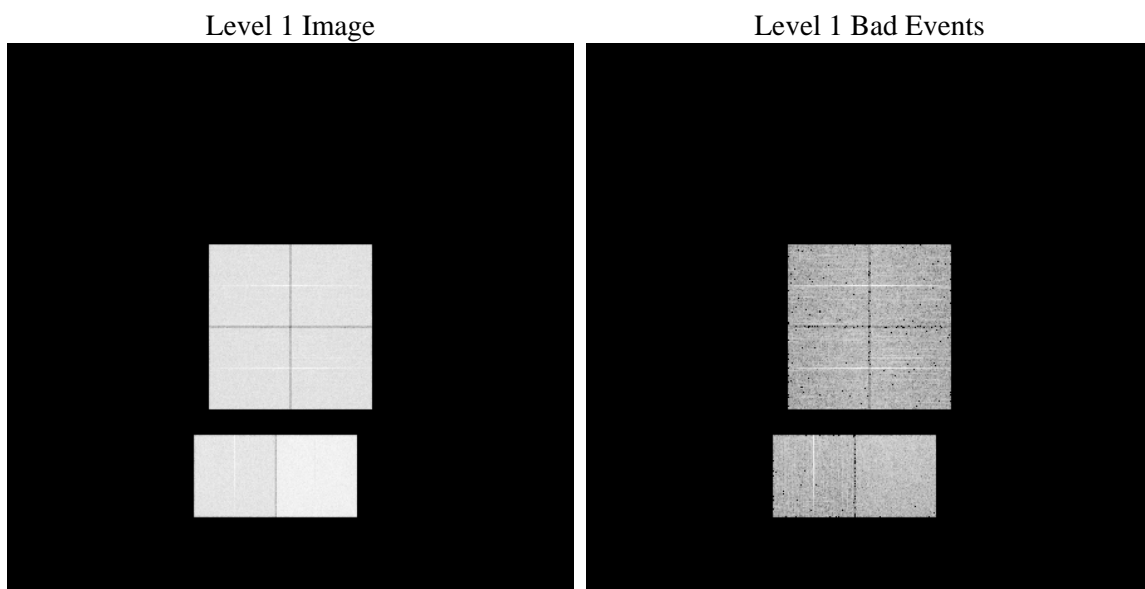
1 Front

seq_num	 	Sequence number
obs_id	60684	Observation id
title	ACIS-012367 diagnostics	Proposal title
observer	CHANDRA engineering request/realtime commanding	Principal investig
object	 	Source name
dtcycle	0	
cycle	P	events from which exps? Prim/Second/Both
ra_targ	0.0	Observer's specified target RA [deg]
dec_targ	0.0	Observer's specified target Dec [deg]
ra_nom	312.97088006161	Nominal RA [deg]
dec_nom	18.00727485184	Nominal Dec [deg]
roll_nom	132.37992071951	Nominal Roll [deg]
revision	3	Processing version of data
ontime	8409.5454238951	Sum of GTIs [s]
livetime	8303.0586961174	Livetime [s]
ontime0	5139.3629318774	Sum of GTIs [s]
ontime1	5207.3823481202	Sum of GTIs [s]
ontime2	4968.4891067743	Sum of GTIs [s]
ontime3	4981.453794688	Sum of GTIs [s]
ontime6	5424.4463120997	Sum of GTIs [s]
ontime7	8409.5454238951	Sum of GTIs [s]
l2events	1272794	Number of level 2 events

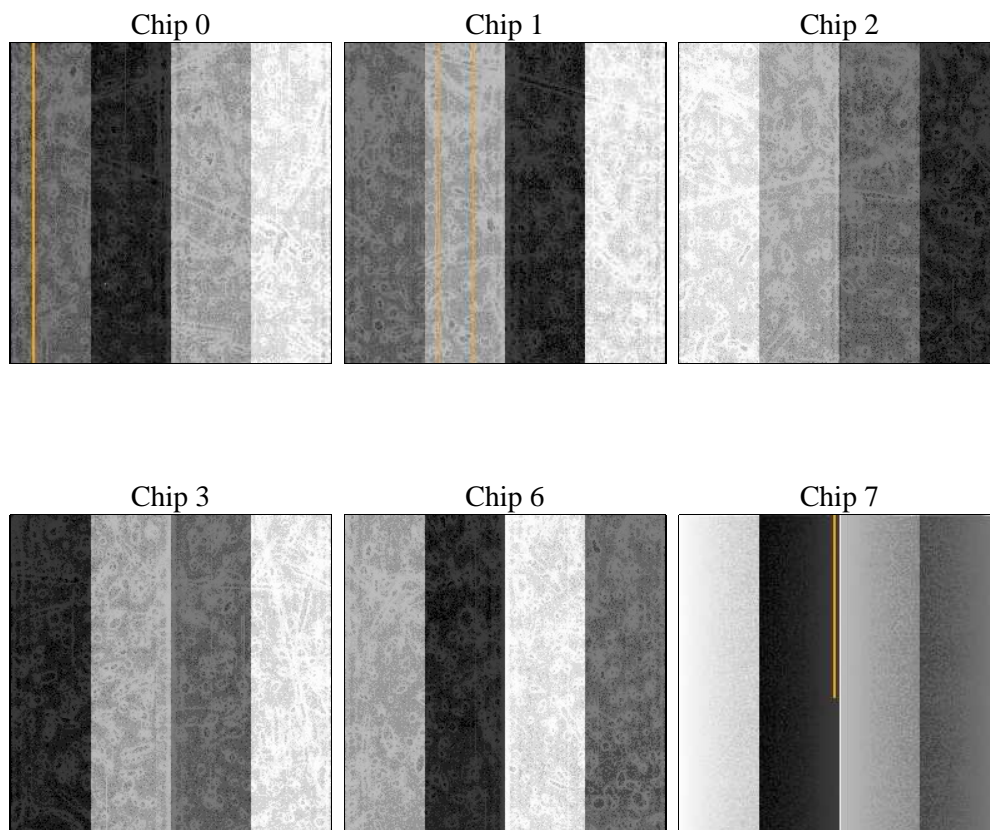
2 OBI

2.1 OBI

2.1.1 Images



2.1.2 Bias



2.1.3 Parameters

obi_num	0	Obi number	sched_exp_time	0.0	[s] Scheduled observation exposure time
ascdsver	8.4.5	Processing system revision	ontime	8409.5454238951	Sum of GTIs [s]
caldsver	4.5.2	 	ontime0	5139.3629318774	Sum of GTIs [s]
date	2012-10-30T14:09:46	Date and time of file creation	ontime1	5207.3823481202	Sum of GTIs [s]
revision	3	Processing version of data	ontime2	4968.4891067743	Sum of GTIs [s]
			ontime3	4981.453794688	Sum of GTIs [s]
			ontime6	5424.4463120997	Sum of GTIs [s]
			ontime7	8409.5454238951	Sum of GTIs [s]
			l1events	1540543	Number of level 1 events

2.1.4 Events

	ccd 0	ccd 1	ccd 2	ccd 3	ccd 6	ccd 7		ccd 0	ccd 1	ccd 2	ccd 3	ccd 6	ccd 7
level 1 events	228062	230721	223558	226063	251769	380370	grade 0 events	109585	110103	108347	109392	119471	83991
rejected events	31702	31576	31776	33596	35115	44285		48%	47%	48%	48%	47%	22%
rejected %	13%	13%	14%	14%	13%	11%	grade 1 events	540	498	604	601	540	225
								0%	0%	0%	0%	0%	0%
							grade 2 events	34429	35361	32292	32811	37427	73785
								15%	15%	14%	14%	14%	19%
							grade 3 events	12673	12649	12689	12493	13330	33696
								5%	5%	5%	5%	5%	8%
							grade 4 events	12625	12739	12499	12526	13277	33395
								5%	5%	5%	5%	5%	8%
							grade 5 events	2153	2206	2077	2091	2374	7949
								0%	0%	0%	0%	0%	2%
							grade 6 events	28241	29266	27099	26527	34708	113452
								12%	12%	12%	11%	13%	29%
							grade 7 events	27816	27899	27951	29622	30642	33877
								12%	12%	12%	13%	12%	8%

2.2 Compared Parameters

Parameter	Planned	Actual	Parameter	Planned	Actual
Instrument	ACIS	ACIS	Obspar format version number	7	7
Detector	ACIS-012367	ACIS-012367	Obspar file type	PREDICTED	ACTUAL
Grating	NONE	NONE	Obspar update status	NONE	UPDATED
Data mode	FAINT	FAINT	On-chip summing requested	N	N
Observation mode	SECONDARY	SECONDARY	Subarray requested	NONE	NONE
[deg] Pointing RA	0	312.9708800616118	Alternating exposures requested	N	N
[deg] Pointing Dec	0	18.00727485183961	[s] Primary exposure time	0.000000	3.2
[deg] Pointing Roll	0.0	132.3799207195147			
[mm] SIM focus pos	-0.782348	-0.6828225247311905			
[mm] SIM defocus	0	0.8505141146731063			
[mm] SIM translation stage pos	-233.592463	250.466033080201			
[mm] SIM translation stage offset	0	-0.01005468664627074			
[s] Observation start time (MET)	172515177.013774	172515175.98905			
Observation start date	2003-06-20T16:52:57	2003-06-20T16:52:55			
[s] Observation end time (MET)	172537741.364733	172537740.34001			
Observation end date	2003-06-20T23:09:01	2003-06-20T23:09:00			
Read mode	TIMED	TIMED			

2.3 Star Slots

2.4 FID Slots

A Summary

A.1 Status

V&V Scientist	Jen Lauer
V&V Date (YYYY-MM-DD)	2012.12.06
V&V Edition	1
V&V Disposition and Status	OK
V&V Charge Time	8.4095454238951

A.2 Comments