

V&V Reference Report

L2 ASCDS Version : 7.6.8

Observation 60454 - L2 Version 001
Chandra X-Ray Center

L2 Processing Date : Jun 23 2006

Contents

1	Front	2
2	OBI	3
2.1	OBI	3
2.1.1	Images	3
2.1.2	Bias	3
2.1.3	Parameters	4
2.1.4	Events	4
2.2	Compared Parameters	5
2.3	Aspect	6
2.4	Star Slots	8
2.5	FID Slots	8
A	Summary	9
A.1	Status	9
A.2	Comments	9

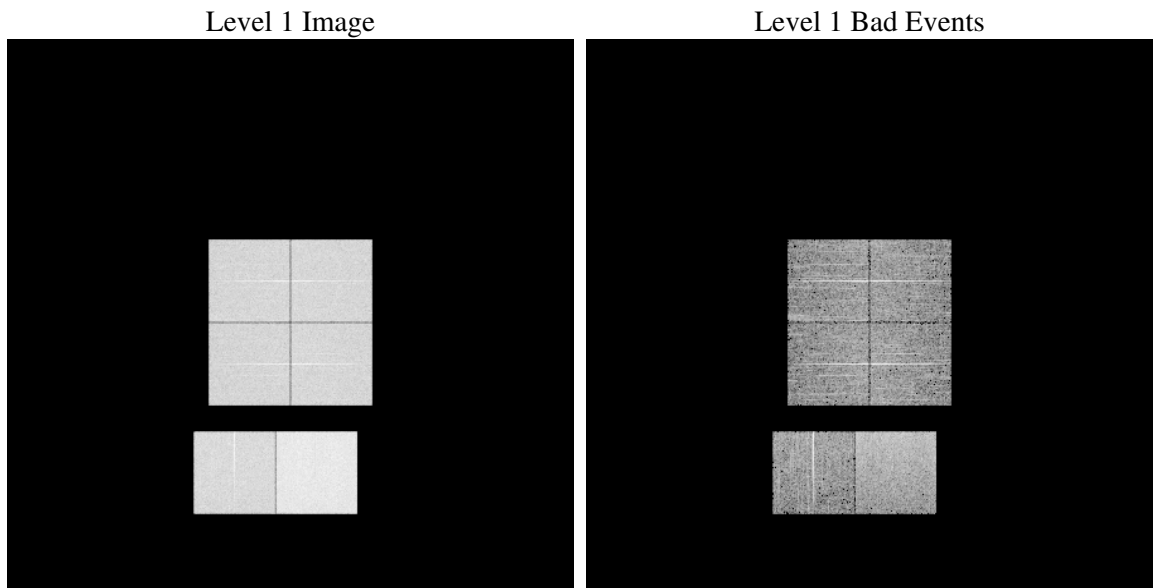
1 Front

seq_num	
obs_id	60454
title	ACIS-012367 diagnostics
observer	CHANDRA engineering request/realtime commanding
object	
dtcycle	0
cycle	P
ra_targ	0.0
dec_targ	0.0
ra_nom	65.385471314445
dec_nom	44.973351279871
roll_nom	216.02891731805
revision	2
ontime	7807.9999709129
livetime	7709.1303738681
ontime0	5076.1783191562
ontime1	5147.5209353864
ontime2	4904.0876868367
ontime3	5049.9324645698
ontime6	5351.3423894346
ontime7	7807.9999709129
l2events	1156083

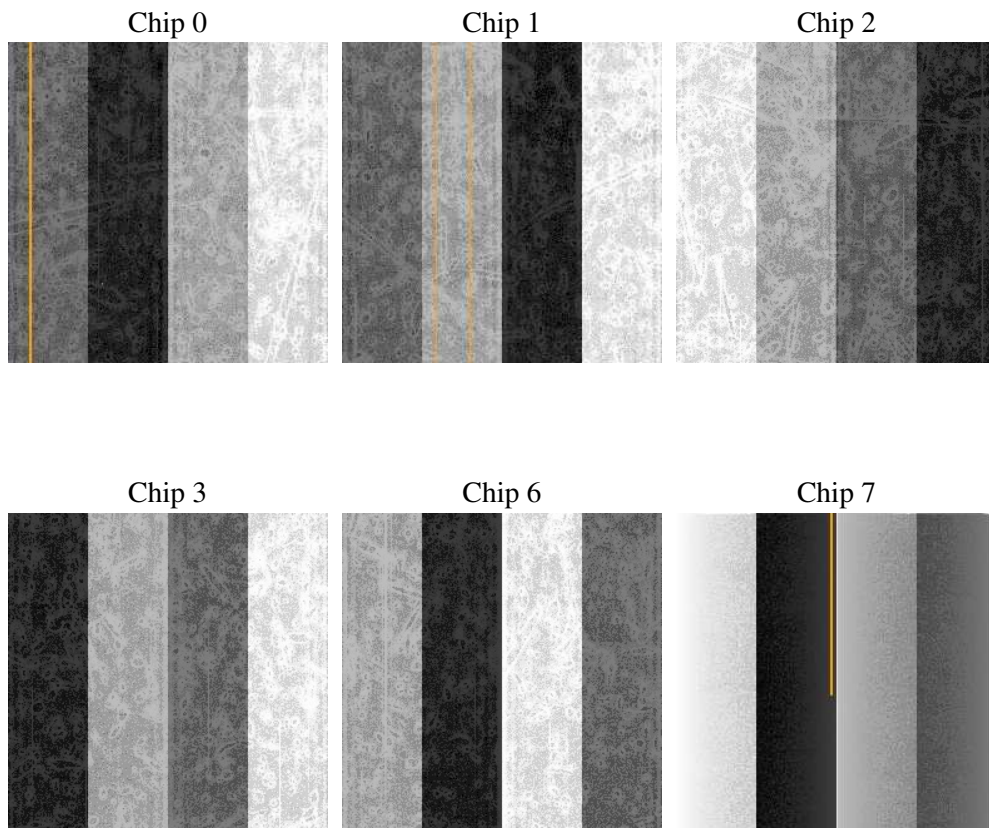
2 OBI

2.1 OBI

2.1.1 Images



2.1.2 Bias



2.1.3 Parameters

obi_num	0
ascdsver	7.6.8
caldbver	3.2.2
date	2006-06-23T23:35:27
revision	2

sched_exp_time	0.0
ontime	7810.817179054
ontime0	5078.6773136258
ontime1	5149.9788898528
ontime2	4906.9048949778
ontime3	5052.7496727109
ontime6	5354.1595975757
ontime7	7810.817179054
l1events	1422126

2.1.4 Events

	ccd 0	ccd 1	ccd 2	ccd 3	ccd 6	ccd 7
level 1 events	212952	215449	207078	215508	233912	337227
rejected events	31965	31227	31096	32731	33588	50585
rejected %	15%	14%	15%	15%	14%	15%

	ccd 0	ccd 1	ccd 2	ccd 3	ccd 6	ccd 7
grade 0 events	100139	100676	98557	102697	108400	52427
	47%	46%	47%	47%	46%	15%
grade 1 events	557	485	574	578	515	139
	0%	0%	0%	0%	0%	0%
grade 2 events	31501	32850	29735	30886	34688	86534
	14%	15%	14%	14%	14%	25%
grade 3 events	11443	11627	11562	11942	12284	21156
	5%	5%	5%	5%	5%	6%
grade 4 events	11381	11435	11292	11875	12455	20641
	5%	5%	5%	5%	5%	6%
grade 5 events	2079	2185	1978	2219	2475	6196
	0%	1%	0%	1%	1%	1%
grade 6 events	26654	27749	24953	25485	32611	105998
	12%	12%	12%	11%	13%	31%
grade 7 events	29198	28442	28427	29826	30484	44136
	13%	13%	13%	13%	13%	13%

2.2 Compared Parameters

Parameter	Planned	Actual	Parameter	Planned	Actual
Instrument	ACIS	ACIS	Obspar format version number	6	6
Detector	ACIS-012367	ACIS-012367	Obspar file type	PREDICTED	ACTUAL
Grating	NONE	NONE	Obspar update status	NONE	UPDATED
Data mode	FAINT	FAINT	On-chip summing requested	N	N
Observation mode	SECONDARY	SECONDARY	Subarray requested	NONE	NONE
Pointing RA	0	65.38547131444507	Alternating exposures requested	N	N
Pointing Dec	0	44.97335127987116	Primary exposure time	0.000000	3.2
Pointing Roll	0.0	216.0289173180466			
SIM focus pos (mm)	-0.782348	-0.6828225247311905			
SIM defocus (mm)	0	0.8505141146731063			
SIM translation stage pos (mm)	-233.592463	250.466033080201			
SIM translation stage offset (mm)	0	-0.01005468664627074			
Observation start time	187788768.269362	187788767.24465			
Observation start date	2003-12-14T11:32:48	2003-12-14T11:32:47			
Observation end time	187805268.720078	187805267.69537			
Observation end date	2003-12-14T16:07:49	2003-12-14T16:07:47			
Read mode	TIMED	TIMED			

2.3 Aspect

2.4 Star Slots

2.5 FID Slots

A Summary

A.1 Status

V&V Scientist	Jen Lauer
V&V Date (YYYY-MM-DD)	2006.06.26
V&V Edition	1
V&V Disposition and Status	OK
V&V Charge Time	7.80799997

A.2 Comments