

V&V Reference Report

L2 ASCDS Version : 7.6.8

Observation 60444 - L2 Version 001
Chandra X-Ray Center

L2 Processing Date : Jun 22 2006

Contents

1	Front	2
2	OBI	3
2.1	OBI	3
2.1.1	Images	3
2.1.2	Bias	3
2.1.3	Parameters	4
2.1.4	Events	4
2.2	Compared Parameters	5
2.3	Aspect	6
2.4	Star Slots	8
2.5	FID Slots	8
A	Summary	9
A.1	Status	9
A.2	Comments	9

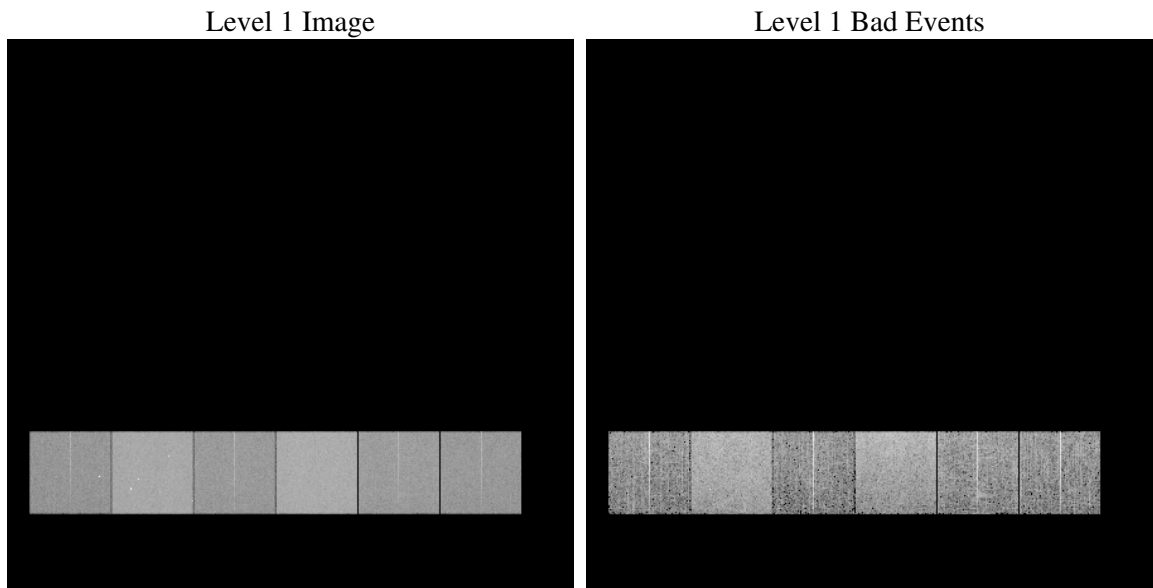
1 Front

seq_num	
obs_id	60444
title	ACIS-456789 diagnostics
observer	CHANDRA engineering request/realtime commanding
object	
dtcycle	0
cycle	P
ra_targ	0.0
dec_targ	0.0
ra_nom	335.02319336816
dec_nom	-15.017784880908
roll_nom	288.65251517871
revision	2
ontime	7803.1962785721
livetime	7704.3875087721
ontime4	4494.2920640409
ontime5	7803.2373185754
ontime6	4837.7940006256
ontime7	7803.1962785721
ontime8	5003.1659705341
ontime9	4743.6826630235
l2events	1122721

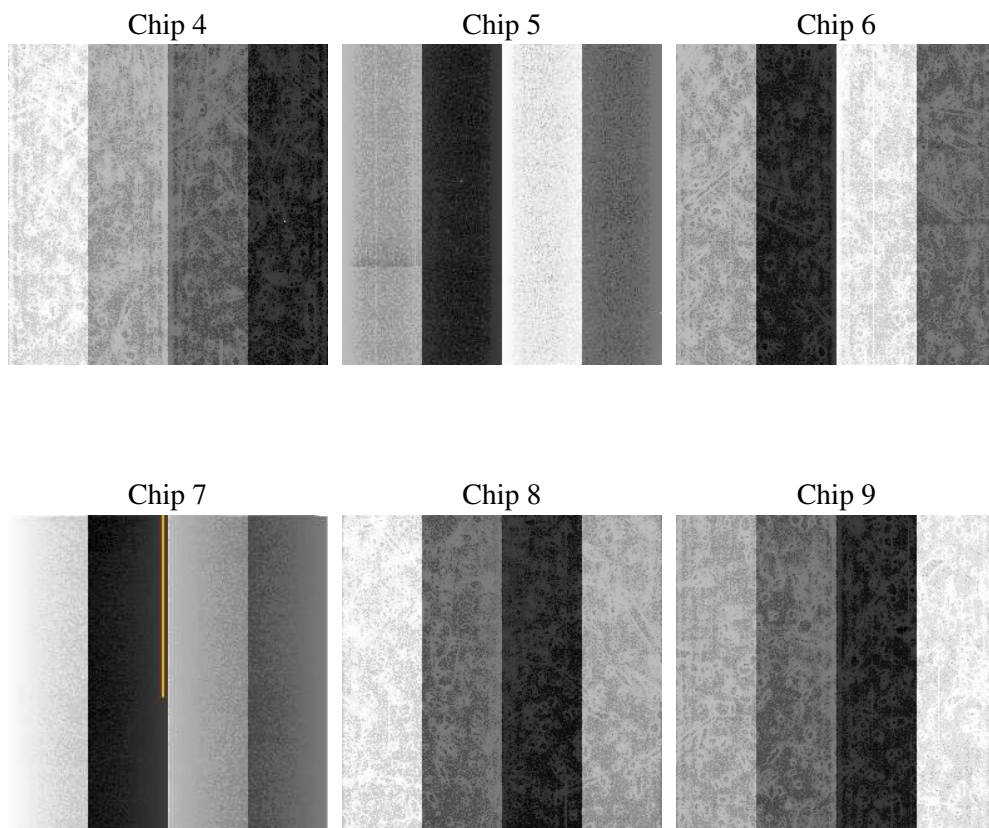
2 OBI

2.1 OBI

2.1.1 Images



2.1.2 Bias



2.1.3 Parameters

obi_num	1
ascdsver	7.6.8
caldbver	3.2.2
date	2006-06-22T18:36:32
revision	2

sched_exp_time	0.0
ontime	7804.3264192045
ontime4	4495.2990846634
ontime5	7804.3264192045
ontime6	4838.8420612514
ontime7	7804.3264192045
ontime8	5004.1319511831
ontime9	4744.8538436592
l1events	1417037

2.1.4 Events

	ccd 4	ccd 5	ccd 6	ccd 7	ccd 8	ccd 9
level 1 events	180965	298789	202809	324032	215820	194622
rejected events	31619	54492	30295	50374	35222	31901
rejected %	17%	18%	14%	15%	16%	16%

	ccd 4	ccd 5	ccd 6	ccd 7	ccd 8	ccd 9
grade 0 events	87210	31168	94241	50201	99068	90138
	48%	10%	46%	15%	45%	46%
grade 1 events	552	212	392	119	496	476
	0%	0%	0%	0%	0%	0%
grade 2 events	23825	113910	29775	82154	31735	27880
	13%	38%	14%	25%	14%	14%
grade 3 events	9694	8342	10659	20619	11676	10294
	5%	2%	5%	6%	5%	5%
grade 4 events	9832	8281	10841	20013	11525	10281
	5%	2%	5%	6%	5%	5%
grade 5 events	2054	5868	2060	6304	2636	2342
	1%	1%	1%	1%	1%	1%
grade 6 events	18785	82596	26998	100671	26594	24128
	10%	27%	13%	31%	12%	12%
grade 7 events	29013	48412	27843	43951	32090	29083
	16%	16%	13%	13%	14%	14%

2.2 Compared Parameters

Parameter	Planned	Actual	Parameter	Planned	Actual
Instrument	ACIS	ACIS	Obspar format version number	6	6
Detector	ACIS-456789	ACIS-456789	Obspar file type	PREDICTED	ACTUAL
Grating	NONE	NONE	Obspar update status	NONE	UPDATED
Data mode	FAINT	FAINT	On-chip summing requested	N	N
Observation mode	SECONDARY	SECONDARY	Subarray requested	NONE	NONE
Pointing RA	0	335.0231933681623	Alternating exposures requested	N	N
Pointing Dec	0	-15.01778488090804	Primary exposure time	0.000000	3.2
Pointing Roll	0.0	288.6525151787129			
SIM focus pos (mm)	-0.684267	-0.6828225247311905			
SIM defocus (mm)	0	0.8505141146731063			
SIM translation stage pos (mm)	-190.132523	250.466033080201			
SIM translation stage offset (mm)	0	-0.01005468664627074			
Observation start time	188704312.65917	188704311.63445			
Observation start date	2003-12-25T01:51:53	2003-12-25T01:51:51			
Observation end time	188719392.459826	188719391.4351			
Observation end date	2003-12-25T06:03:12	2003-12-25T06:03:11			
Read mode	TIMED	TIMED			

2.3 Aspect

2.4 Star Slots

2.5 FID Slots

A Summary

A.1 Status

V&V Scientist	Jen Lauer
V&V Date (YYYY-MM-DD)	2006.06.22
V&V Edition	1
V&V Disposition and Status	OK
V&V Charge Time	7.80319627

A.2 Comments