

V&V Reference Report

L2 ASCDS Version : 7.6.7.2

Observation 60434 - L2 Version 001
Chandra X-Ray Center

L2 Processing Date : Jun 8 2006

Contents

1	Front	2
2	OBI	3
2.1	OBI	3
2.1.1	Images	3
2.1.2	Bias	3
2.1.3	Parameters	4
2.1.4	Events	4
2.2	Compared Parameters	5
2.3	Aspect	6
2.4	Star Slots	8
2.5	FID Slots	8
A	Summary	9
A.1	Status	9
A.2	Comments	9

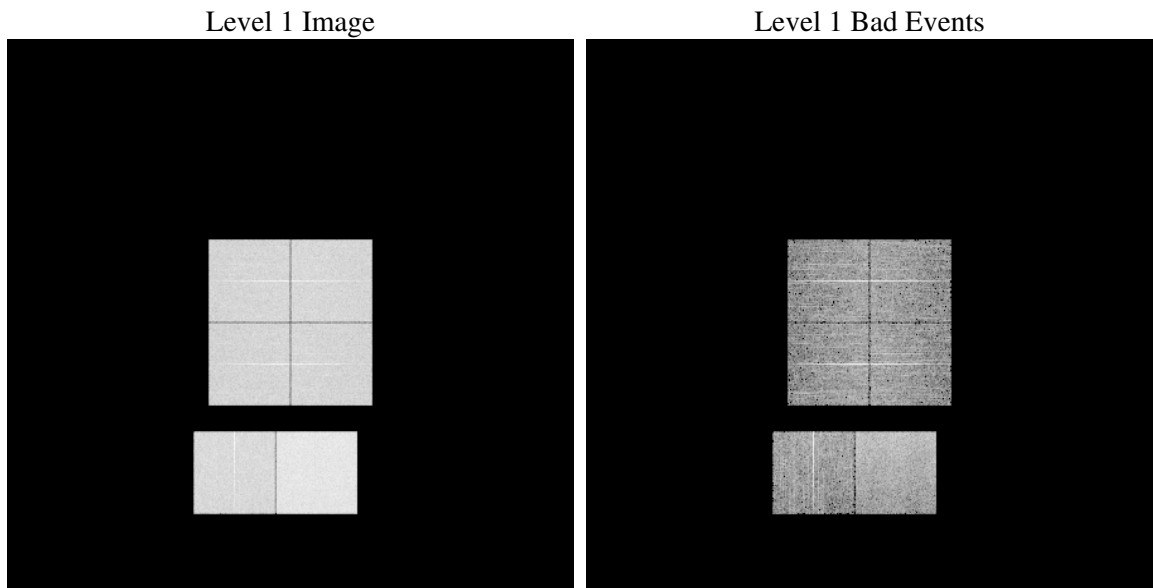
1 Front

seq_num	
obs_id	60434
title	ACIS-012367 diagnostics
observer	CHANDRA engineering request/realtime commanding
object	
dtcycle	0
cycle	P
ra_targ	0.0
dec_targ	0.0
ra_nom	98.026658115289
dec_nom	5.0105984923036
roll_nom	348.86397228564
revision	2
ontime	7807.4532547295
livetime	7708.5905805342
ontime0	5422.1305644512
ontime1	5587.4619583488
ontime2	5195.3436659575
ontime3	5214.6247900426
ontime6	5710.6766030788
ontime7	7807.4532547295
l2events	1139457

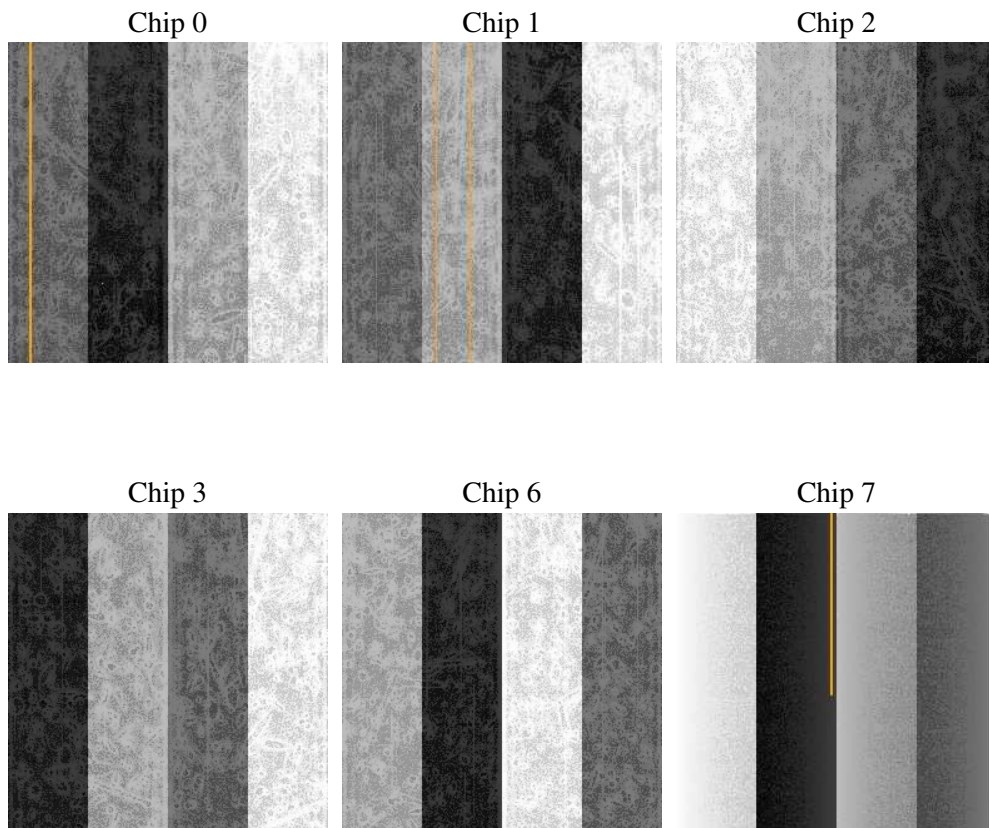
2 OBI

2.1 OBI

2.1.1 Images



2.1.2 Bias



2.1.3 Parameters

obi_num	0
ascdsver	7.6.7.2
caldbver	3.2.2
date	2006-06-08T13:45:20
revision	2

sched_exp_time	0.0
ontime	7807.5927894413
ontime0	5422.2290591598
ontime1	5587.519413054
ontime2	5195.3600806594
ontime3	5214.8053647578
ontime6	5710.6766030788
ontime7	7807.5927894413
l1events	1419887

2.1.4 Events

	ccd 0	ccd 1	ccd 2	ccd 3	ccd 6	ccd 7
level 1 events	215298	220847	210312	212029	238123	323278
rejected events	33518	33873	33873	34900	36958	52125
rejected %	15%	15%	16%	16%	15%	16%

	ccd 0	ccd 1	ccd 2	ccd 3	ccd 6	ccd 7
grade 0 events	100348	102607	99515	99636	109935	48951
	46%	46%	47%	46%	46%	15%
grade 1 events	495	454	538	551	500	124
	0%	0%	0%	0%	0%	0%
grade 2 events	31897	33309	29789	30393	34386	80914
	14%	15%	14%	14%	14%	25%
grade 3 events	11647	11913	11491	11501	12395	20221
	5%	5%	5%	5%	5%	6%
grade 4 events	11676	11801	11374	11560	12515	19952
	5%	5%	5%	5%	5%	6%
grade 5 events	2251	2452	2128	2329	2596	6399
	1%	1%	1%	1%	1%	1%
grade 6 events	26212	27344	24270	24039	31934	101115
	12%	12%	11%	11%	13%	31%
grade 7 events	30772	30967	31207	32020	33862	45602
	14%	14%	14%	15%	14%	14%

2.2 Compared Parameters

Parameter	Planned	Actual	Parameter	Planned	Actual
Instrument	ACIS	ACIS	Obspar format version number	6	6
Detector	ACIS-012367	ACIS-012367	Obspar file type	PREDICTED	ACTUAL
Grating	NONE	NONE	Obspar update status	NONE	UPDATED
Data mode	FAINT	FAINT	On-chip summing requested	N	N
Observation mode	SECONDARY	SECONDARY	Subarray requested	NONE	NONE
Pointing RA	0	98.02665811528853	Alternating exposures requested	N	N
Pointing Dec	0	5.010598492303604	Primary exposure time	0.000000	3.2
Pointing Roll	0.0	348.8639722856353			
SIM focus pos (mm)	-0.782348	-0.7809083437167272			
SIM defocus (mm)	0	0.7524282956875696			
SIM translation stage pos (mm)	-233.592463	250.466033080201			
SIM translation stage offset (mm)	0	-0.01005468664627074			
Observation start time	189389746.58897	189389745.56425			
Observation start date	2004-01-02T00:15:47	2004-01-02T00:15:45			
Observation end time	189426238.640557	189426237.61584			
Observation end date	2004-01-02T10:23:59	2004-01-02T10:23:57			
Read mode	TIMED	TIMED			

2.3 Aspect

2.4 Star Slots

2.5 FID Slots

A Summary

A.1 Status

V&V Scientist	Jen Lauer
V&V Date (YYYY-MM-DD)	2006.06.08
V&V Edition	1
V&V Disposition and Status	OK
V&V Charge Time	7.80745325

A.2 Comments