

V&V Reference Report

L2 ASCDS Version : 8.4.5

Observation 60274 - L2 Version 3
Chandra X-Ray Center

L2 Processing Date : Nov 30 2012

Contents

1	Front	2
2	OBI	3
2.1	OBI	3
2.1.1	Images	3
2.1.2	Bias	3
2.1.3	Parameters	4
2.1.4	Events	4
2.2	Compared Parameters	5
2.3	Star Slots	6
2.4	FID Slots	6
A	Summary	7
A.1	Status	7
A.2	Comments	7

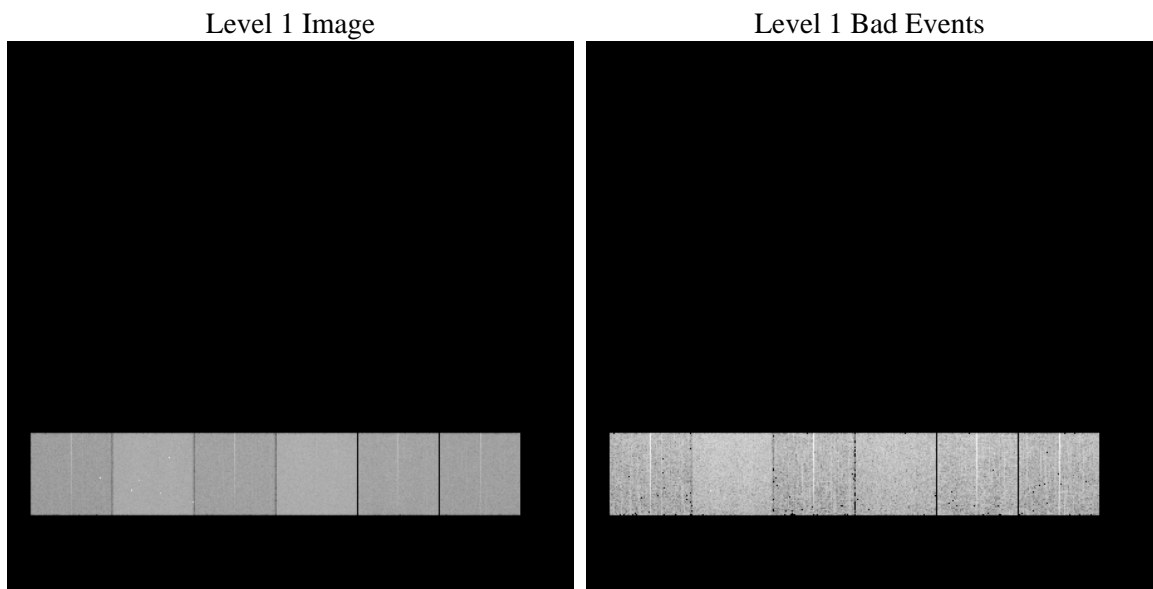
1 Front

seq_num	 	Sequence number
obs_id	60274	Observation id
title	ACIS-456789 diagnostics	Proposal title
observer	CHANDRA engineering request/realtime commanding	Principal investig
object	 	Source name
dtcycle	0	
cycle	P	events from which exps? Prim/Second/Both
ra_targ	0.0	Observer's specified target RA [deg]
dec_targ	0.0	Observer's specified target Dec [deg]
ra_nom	232.97808711335	Nominal RA [deg]
dec_nom	-2.9815357652457	Nominal Dec [deg]
roll_nom	106.94194860392	Nominal Roll [deg]
revision	3	Processing version of data
ontime	7759.6078188717	Sum of GTIs [s]
livetime	7661.3509923943	Livetime [s]
ontime4	4729.1691899002	Sum of GTIs [s]
ontime5	7759.5667788684	Sum of GTIs [s]
ontime6	5185.6331843734	Sum of GTIs [s]
ontime7	7759.6078188717	Sum of GTIs [s]
ontime8	5335.1920754015	Sum of GTIs [s]
ontime9	5021.0219008327	Sum of GTIs [s]
l2events	1087880	Number of level 2 events

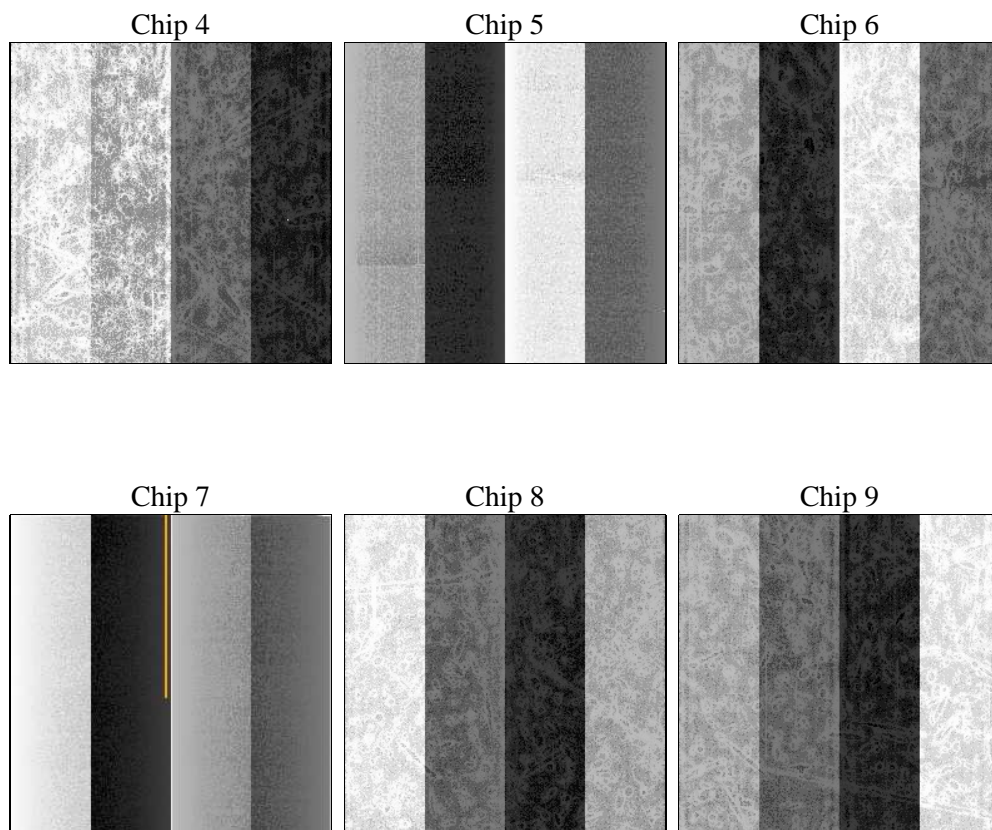
2 OBI

2.1 OBI

2.1.1 Images



2.1.2 Bias



2.1.3 Parameters

obi_num	0	Obi number	sched_exp_time	0.0	[s] Scheduled observation exposure time
ascdsver	8.4.5	Processing system revision	ontime	7759.6078188717	Sum of GTIs [s]
caldsver	4.5.2	 	ontime4	4729.1691899002	Sum of GTIs [s]
date	2012-11-29T21:57:02	Date and time of file creation	ontime5	7759.5667788684	Sum of GTIs [s]
revision	3	Processing version of data	ontime6	5185.6331843734	Sum of GTIs [s]
			ontime7	7759.6078188717	Sum of GTIs [s]
			ontime8	5335.1920754015	Sum of GTIs [s]
			ontime9	5021.0219008327	Sum of GTIs [s]
			l1events	1407495	Number of level 1 events

2.1.4 Events

	ccd 4	ccd 5	ccd 6	ccd 7	ccd 8	ccd 9		ccd 4	ccd 5	ccd 6	ccd 7	ccd 8	ccd 9
level 1 events	180322	290219	208620	309923	221451	196960	grade 0 events	84027	52617	92362	64200	96744	86827
rejected events	36488	54141	38476	46162	43842	38816		46%	18%	44%	20%	43%	44%
rejected %	20%	18%	18%	14%	19%	19%	grade 1 events	639	219	467	183	517	532
								0%	0%	0%	0%	0%	0%
							grade 2 events	22829	84880	29305	57889	31024	27275
								12%	29%	14%	18%	14%	13%
							grade 3 events	9625	14311	10506	26604	11636	10078
								5%	4%	5%	8%	5%	5%
							grade 4 events	9595	14131	10566	26174	11574	10113
								5%	4%	5%	8%	5%	5%
							grade 5 events	2279	8829	2499	8377	3023	2687
								1%	3%	1%	2%	1%	1%
							grade 6 events	17850	70233	27405	88988	26733	23941
								9%	24%	13%	28%	12%	12%
							grade 7 events	33478	44999	35510	37508	40200	35507
								18%	15%	17%	12%	18%	18%

2.2 Compared Parameters

Parameter	Planned	Actual
Instrument	ACIS	ACIS
Detector	ACIS-456789	ACIS-456789
Grating	NONE	NONE
Data mode	FAINT	FAINT
Observation mode	SECONDARY	SECONDARY
[deg] Pointing RA	0	232.9780871133525
[deg] Pointing Dec	0	-2.98153576524575
[deg] Pointing Roll	0.0	106.9419486039187
[mm] SIM focus pos	-0.684267	-0.6828225247311905
[mm] SIM defocus	0	0.8505141146731063
[mm] SIM translation stage pos	-190.132523	250.466033080201
[mm] SIM translation stage offset	0	-0.01005468664627074
[s] Observation start time (MET)	198564614.240954	198564613.21596
Observation start date	2004-04-17T04:50:14	2004-04-17T04:50:13
[s] Observation end time (MET)	198586674.291926	198586673.26693
Observation end date	2004-04-17T10:57:54	2004-04-17T10:57:53
Read mode	TIMED	TIMED

Parameter	Planned	Actual
Obspar format version number	7	7
Obspar file type	PREDICTED	ACTUAL
Obspar update status	NONE	UPDATED
On-chip summing requested	N	N
Subarray requested	NONE	NONE
Alternating exposures requested	N	N
[s] Primary exposure time	0.000000	3.2

2.3 Star Slots

2.4 FID Slots

A Summary

A.1 Status

V&V Scientist	Beth Sundheim
V&V Date (YYYY-MM-DD)	2012.12.21
V&V Edition	1
V&V Disposition and Status	OK
V&V Charge Time	7.7596078188717

A.2 Comments