

V&V Reference Report

L2 ASCDS Version : 8.4.5

Observation 60164 - L2 Version 3
Chandra X-Ray Center

L2 Processing Date : Dec 3 2012

Contents

| | | |
|----------|-------------------------------|----------|
| 1 | Front | 2 |
| 2 | OBI | 3 |
| 2.1 | OBI | 3 |
| 2.1.1 | Images | 3 |
| 2.1.2 | Bias | 3 |
| 2.1.3 | Parameters | 4 |
| 2.1.4 | Events | 4 |
| 2.2 | Compared Parameters | 5 |
| 2.3 | Star Slots | 6 |
| 2.4 | FID Slots | 6 |
| A | Summary | 7 |
| A.1 | Status | 7 |
| A.2 | Comments | 7 |

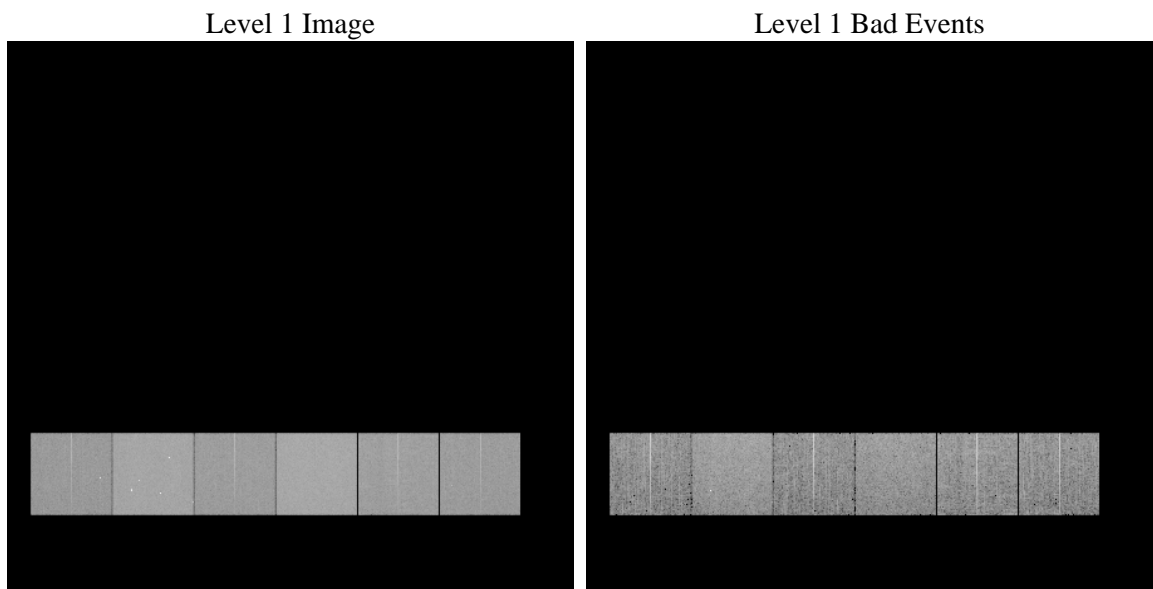
1 Front

| | | |
|----------|---|---|
| seq_num | | Sequence number |
| obs_id | 60164 | Observation id |
| title | ACIS-456789 diagnostics | Proposal title |
| observer | CHANDRA engineering request/realtime commanding | Principal investig |
| object | | Source name |
| dtcycle | 0 | |
| cycle | P | events from which exps? Prim/Second/Both |
| ra_targ | 0.0 | Observer's specified target RA [deg] |
| dec_targ | 0.0 | Observer's specified target Dec [deg] |
| ra_nom | 269.03544747229 | Nominal RA [deg] |
| dec_nom | -38.992180607349 | Nominal Dec [deg] |
| roll_nom | 342.95046951297 | Nominal Roll [deg] |
| revision | 3 | Processing version of data |
| ontime | 8280.7468834817 | Sum of GTIs [s] |
| livetime | 8175.8910803759 | Livetime [s] |
| ontime4 | 5334.5771256983 | Sum of GTIs [s] |
| ontime5 | 8280.7058434784 | Sum of GTIs [s] |
| ontime6 | 5756.048561126 | Sum of GTIs [s] |
| ontime7 | 8280.7468834817 | Sum of GTIs [s] |
| ontime8 | 5979.4917930365 | Sum of GTIs [s] |
| ontime9 | 5603.7225305438 | Sum of GTIs [s] |
| l2events | 1142661 | Number of level 2 events |

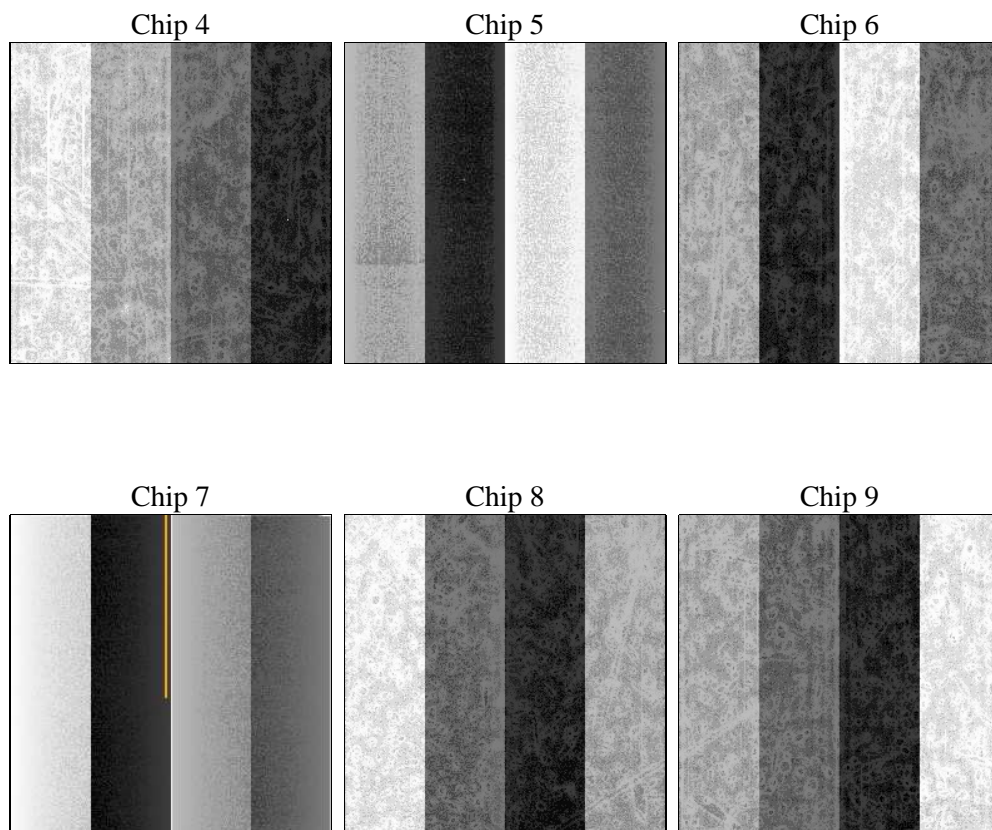
2 OBI

2.1 OBI

2.1.1 Images



2.1.2 Bias



2.1.3 Parameters

| | | | | | |
|----------|---------------------|--------------------------------|----------------|-----------------|---|
| obi_num | 0 | Obi number | sched_exp_time | 0.0 | [s] Scheduled observation exposure time |
| ascdsver | 8.4.5 | Processing system revision | ontime | 8280.7468834817 | Sum of GTIs [s] |
| caldsver | 4.5.2 | | ontime4 | 5334.5771256983 | Sum of GTIs [s] |
| date | 2012-12-03T13:39:55 | Date and time of file creation | ontime5 | 8280.7058434784 | Sum of GTIs [s] |
| revision | 3 | Processing version of data | ontime6 | 5756.048561126 | Sum of GTIs [s] |
| | | | ontime7 | 8280.7468834817 | Sum of GTIs [s] |
| | | | ontime8 | 5979.4917930365 | Sum of GTIs [s] |
| | | | ontime9 | 5603.7225305438 | Sum of GTIs [s] |
| | | | l1events | 1498562 | Number of level 1 events |

2.1.4 Events

| | ccd 4 | ccd 5 | ccd 6 | ccd 7 | ccd 8 | ccd 9 | | ccd 4 | ccd 5 | ccd 6 | ccd 7 | ccd 8 | ccd 9 |
|-----------------|--------|--------|--------|--------|--------|--------|----------------|-------|-------|-------|-------|--------|-------|
| level 1 events | 198583 | 303592 | 222183 | 320661 | 240845 | 212698 | grade 0 events | 90923 | 54303 | 97819 | 65669 | 104054 | 93654 |
| rejected events | 42567 | 59122 | 41819 | 50007 | 49497 | 43067 | | 45% | 17% | 44% | 20% | 43% | 44% |
| rejected % | 21% | 19% | 18% | 15% | 20% | 20% | grade 1 events | 683 | 217 | 469 | 218 | 577 | 554 |
| | | | | | | | | 0% | 0% | 0% | 0% | 0% | 0% |
| | | | | | | | grade 2 events | 24701 | 88959 | 31030 | 59196 | 33723 | 28809 |
| | | | | | | | | 12% | 29% | 13% | 18% | 14% | 13% |
| | | | | | | | grade 3 events | 10446 | 14103 | 11406 | 26998 | 12381 | 10908 |
| | | | | | | | | 5% | 4% | 5% | 8% | 5% | 5% |
| | | | | | | | grade 4 events | 10263 | 13697 | 11378 | 27109 | 12368 | 10849 |
| | | | | | | | | 5% | 4% | 5% | 8% | 5% | 5% |
| | | | | | | | grade 5 events | 2432 | 9479 | 2840 | 9182 | 3466 | 2973 |
| | | | | | | | | 1% | 3% | 1% | 2% | 1% | 1% |
| | | | | | | | grade 6 events | 19683 | 73408 | 28731 | 91682 | 28822 | 25411 |
| | | | | | | | | 9% | 24% | 12% | 28% | 11% | 11% |
| | | | | | | | grade 7 events | 39452 | 49426 | 38510 | 40607 | 45454 | 39540 |
| | | | | | | | | 19% | 16% | 17% | 12% | 18% | 18% |

2.2 Compared Parameters

| Parameter | Planned | Actual | Parameter | Planned | Actual |
|-----------------------------------|---------------------|----------------------|---------------------------------|-----------|---------|
| Instrument | ACIS | ACIS | Obspar format version number | 7 | 7 |
| Detector | ACIS-456789 | ACIS-456789 | Obspar file type | PREDICTED | ACTUAL |
| Grating | NONE | NONE | Obspar update status | NONE | UPDATED |
| Data mode | FAINT | FAINT | On-chip summing requested | N | N |
| Observation mode | SECONDARY | SECONDARY | Subarray requested | NONE | NONE |
| [deg] Pointing RA | 0 | 269.0354474722929 | Alternating exposures requested | N | N |
| [deg] Pointing Dec | 0 | -38.99218060734944 | [s] Primary exposure time | 3.2 | 3.2 |
| [deg] Pointing Roll | 0.0 | 342.9504695129728 | | | |
| [mm] SIM focus pos | -0.684267 | -0.6828225247311905 | | | |
| [mm] SIM defocus | 0 | 0.8505141146731063 | | | |
| [mm] SIM translation stage pos | -190.132523 | 250.466033080201 | | | |
| [mm] SIM translation stage offset | 0 | -0.01005468664627074 | | | |
| [s] Observation start time (MET) | 204514300.80372 | 204514299.77872 | | | |
| Observation start date | 2004-06-25T01:31:41 | 2004-06-25T01:31:39 | | | |
| [s] Observation end time (MET) | 204527117.404288 | 204527116.37928 | | | |
| Observation end date | 2004-06-25T05:05:17 | 2004-06-25T05:05:16 | | | |
| Read mode | TIMED | TIMED | | | |

2.3 Star Slots

2.4 FID Slots

A Summary

A.1 Status

| | |
|----------------------------|-----------------|
| V&V Scientist | Beth Sundheim |
| V&V Date (YYYY-MM-DD) | 2012.12.23 |
| V&V Edition | 1 |
| V&V Disposition and Status | OK |
| V&V Charge Time | 8.2807468834817 |

A.2 Comments