

V&V Reference Report

L2 ASCDS Version : 7.6.7.2

Observation 60104 - L2 Version 001
Chandra X-Ray Center

L2 Processing Date : Apr 26 2006

Contents

1	Front	2
2	OBI	3
2.1	OBI	3
2.1.1	Images	3
2.1.2	Bias	3
2.1.3	Parameters	4
2.1.4	Events	4
2.2	Compared Parameters	5
2.3	Aspect	6
2.4	Star Slots	8
2.5	FID Slots	8
A	Summary	9
A.1	Status	9
A.2	Comments	9

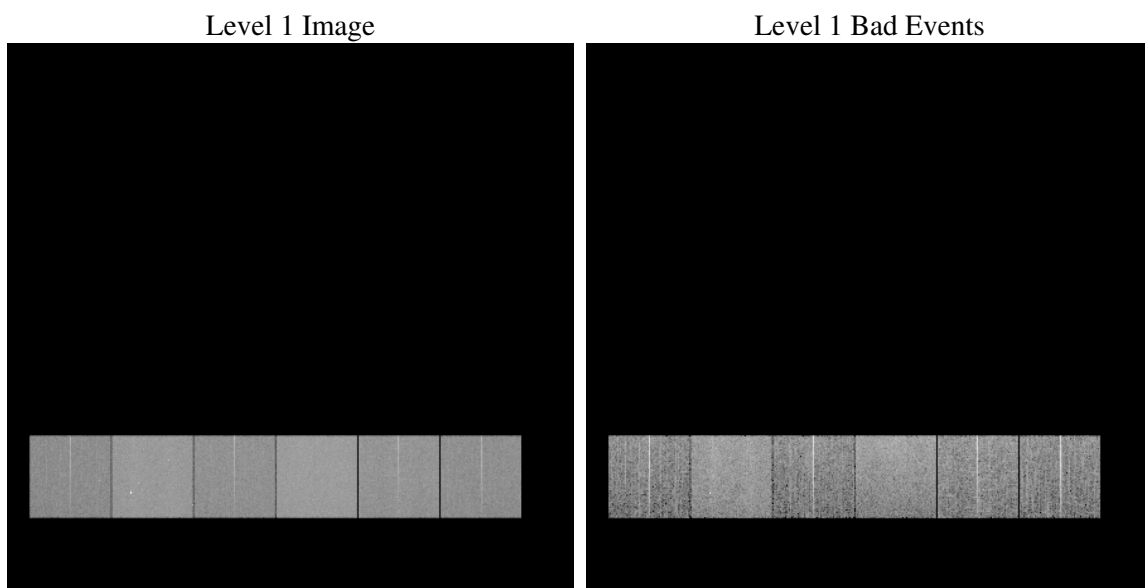
1 Front

seq_num	
obs_id	60104
title	ACIS-456789 diagnostics
observer	CHANDRA engineering request/realtime commanding
object	
dtcycle	0
cycle	P
ra_targ	0.0
dec_targ	0.0
ra_nom	289.04372207391
dec_nom	-50.005238656346
roll_nom	316.59109635924
revision	2
ontime	8278.053416431
livetime	8173.2317196268
ontime4	5756.6962400079
ontime5	8278.0944564342
ontime6	6223.3565475643
ontime7	8278.053416431
ontime8	6421.1378160119
ontime9	5999.6055594683
l2events	1123724

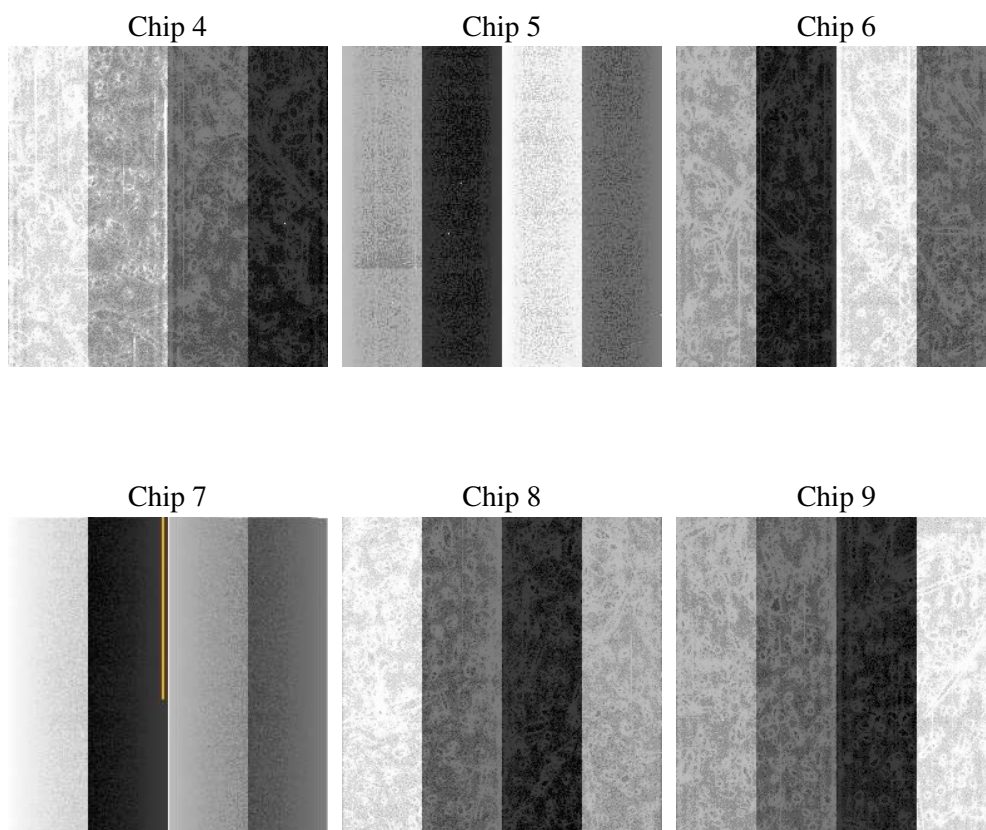
2 OBI

2.1 OBI

2.1.1 Images



2.1.2 Bias



2.1.3 Parameters

obi_num	5
ascdsver	7.6.7.2
caldsver	3.2.1
date	2006-04-27T00:55:27
revision	2

sched_exp_time	0.0
ontime	8280.7715780735
ontime4	5759.2912816405
ontime5	8280.7715780735
ontime6	6225.9926292002
ontime7	8280.7715780735
ontime8	6423.6918176711
ontime9	6002.3647611141
l1events	1497584

2.1.4 Events

	ccd 4	ccd 5	ccd 6	ccd 7	ccd 8	ccd 9
level 1 events	202555	288235	231046	308225	248897	218626
rejected events	43566	63979	44683	59854	50722	45313
rejected %	21%	22%	19%	19%	20%	20%

	ccd 4	ccd 5	ccd 6	ccd 7	ccd 8	ccd 9
grade 0 events	93651	22041	101340	40587	108718	96229
	46%	7%	43%	13%	43%	44%
grade 1 events	713	94	491	94	522	549
	0%	0%	0%	0%	0%	0%
grade 2 events	24283	105838	32652	77203	34173	29152
	11%	36%	14%	25%	13%	13%
grade 3 events	10451	7347	11616	17230	12950	10841
	5%	2%	5%	5%	5%	4%
grade 4 events	10590	6258	11187	16617	12732	11114
	5%	2%	4%	5%	5%	5%
grade 5 events	2539	6107	2954	6739	3510	2986
	1%	2%	1%	2%	1%	1%
grade 6 events	20101	82889	29673	96823	29696	26059
	9%	28%	12%	31%	11%	11%
grade 7 events	40227	57661	41133	52932	46596	41696
	19%	20%	17%	17%	18%	19%

2.2 Compared Parameters

Parameter	Planned	Actual	Parameter	Planned	Actual
Instrument	ACIS	ACIS	Obspar format version number	6	6
Detector	ACIS-456789	ACIS-456789	Obspar file type	PREDICTED	ACTUAL
Grating	NONE	NONE	Obspar update status	NONE	UPDATED
Data mode	FAINT	FAINT	On-chip summing requested	N	N
Observation mode	SECONDARY	SECONDARY	Subarray requested	NONE	NONE
Pointing RA	0	289.0437220739057	Alternating exposures requested	N	N
Pointing Dec	0	-50.00523865634555	Primary exposure time	3.2	3.2
Pointing Roll	0.0	316.5910963592444			
SIM focus pos (mm)	-0.684267	-0.6828225247311905			
SIM defocus (mm)	0	0.8505141146731063			
SIM translation stage pos (mm)	-190.132523	250.466033080201			
SIM translation stage offset (mm)	0	-0.01005468664627074			
Observation start time	208159805.715556	208159804.69056			
Observation start date	2004-08-06T06:10:06	2004-08-06T06:10:04			
Observation end time	208183231.066598	208183230.0416			
Observation end date	2004-08-06T12:40:31	2004-08-06T12:40:30			
Read mode	TIMED	TIMED			

2.3 Aspect

2.4 Star Slots

2.5 FID Slots

A Summary

A.1 Status

V&V Scientist	Jen Lauer
V&V Date (YYYY-MM-DD)	2006.04.27
V&V Edition	1
V&V Disposition and Status	OK
V&V Charge Time	8.27805341

A.2 Comments

The ACIS focal plane temperature was above calibration limits for the entire observation.