

V&V Reference Report

L2 ASCDS Version : 7.6.7.1

Observation 60034 - L2 Version _e1
Chandra X-Ray Center

L2 Processing Date : Apr 17 2006

Contents

1	Front	2
2	OBI Primary	3
2.1	OBI	3
2.1.1	Images	3
2.1.2	Bias	3
2.1.3	Parameters	4
2.1.4	Events	4
2.2	Compared Parameters	5
2.3	Aspect	6
2.4	Star Slots	8
2.5	FID Slots	8
3	OBI Secondary	8
3.1	OBI	8
3.1.1	Images	8
3.1.2	Bias	8
3.1.3	Parameters	9
3.1.4	Events	9
A	Summary	10
A.1	Status	10
A.2	Comments	10

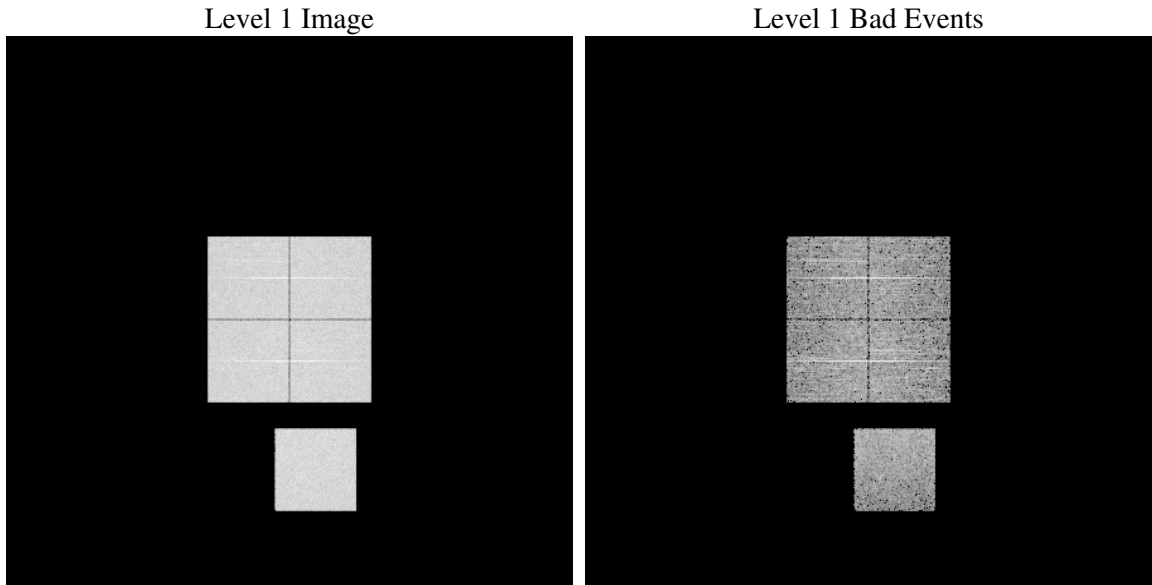
1 Front

seq_num	
obs_id	60034
title	ACIS-01237 diagnostics
observer	CHANDRA engineering request/realtime commanding
object	
dtcycle	0
cycle	P
ra_targ	0.0
dec_targ	0.0
ra_nom	200.96477567461
dec_nom	-61.023846308687
roll_nom	204.04772134459
revision	2
ontime	4149.6304942369
livetime	4101.5370427415
ontime0	4149.7946542501
ontime1	4149.7536142468
ontime2	4149.7125742435
ontime3	4149.6715342402
ontime7	4149.6304942369
l2events	562372

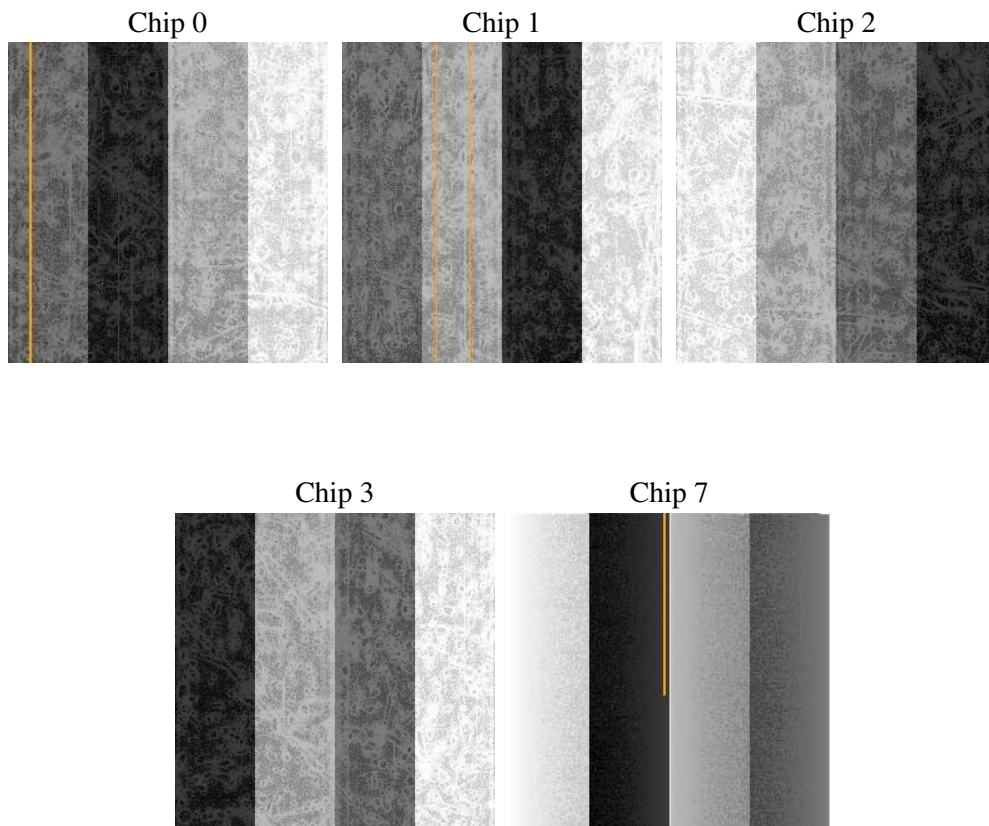
2 OBI Primary

2.1 OBI

2.1.1 Images



2.1.2 Bias



2.1.3 Parameters

obi_num	0
ascdsver	7.6.7.1
caldbver	3.2.1
date	2006-04-18T01:43:00
revision	2

sched_exp_time	0.0
ontime	4150.0988838673
ontime0	4150.0988838673
ontime1	4150.0988838673
ontime2	4150.0988838673
ontime3	4150.0988838673
ontime7	4150.0988838673
llevents	728554

2.1.4 Events

	ccd 0	ccd 1	ccd 2	ccd 3	ccd 7
level 1 events	142167	141790	146339	146818	151440
rejected events	25918	25638	28834	28973	27687
rejected %	18%	18%	19%	19%	18%

	ccd 0	ccd 1	ccd 2	ccd 3	ccd 7
grade 0 events	64178	63786	65561	66279	21526
	45%	44%	44%	45%	14%
grade 1 events	347	330	429	414	58
	0%	0%	0%	0%	0%
grade 2 events	20319	20684	19951	19933	37190
	14%	14%	13%	13%	24%
grade 3 events	7594	7359	7602	7658	8963
	5%	5%	5%	5%	5%
grade 4 events	7386	7400	7776	7698	8988
	5%	5%	5%	5%	5%
grade 5 events	1715	1750	1749	1871	3515
	1%	1%	1%	1%	2%
grade 6 events	16772	16923	16615	16277	47086
	11%	11%	11%	11%	31%
grade 7 events	23856	23558	26656	26688	24114
	16%	16%	18%	18%	15%

2.2 Compared Parameters

Parameter	Planned	Actual	Parameter	Planned	Actual
Instrument	ACIS	ACIS	Obspar format version number	6	6
Detector	ACIS-01237	ACIS-01237	Obspar file type	PREDICTED	ACTUAL
Grating	NONE	NONE	Obspar update status	NONE	UPDATED
Data mode	FAINT	FAINT	On-chip summing requested	N	N
Observation mode	SECONDARY	SECONDARY	Subarray requested	NONE	NONE
Pointing RA	0	200.9647756746124	Alternating exposures requested	Y	Y
Pointing Dec	0	-61.0238463086867	Primary exposure time	3.5	3.5
Pointing Roll	0.0	204.0477213445931	Secondary exposure time	3.2	3.2
SIM focus pos (mm)	-0.782348	-0.7809083437167272	Duty cycle	1	1
SIM defocus (mm)	0	0.7524282956875696			
SIM translation stage pos (mm)	-233.592463	250.466033080201			
SIM translation stage offset (mm)	0	-0.01005468664627074			
Observation start time	212235382.19716	212235381.17217			
Observation start date	2004-09-22T10:16:22	2004-09-22T10:16:21			
Observation end time	212249926.94781	212249925.92282			
Observation end date	2004-09-22T14:18:47	2004-09-22T14:18:45			
Read mode	TIMED	TIMED			

2.3 Aspect

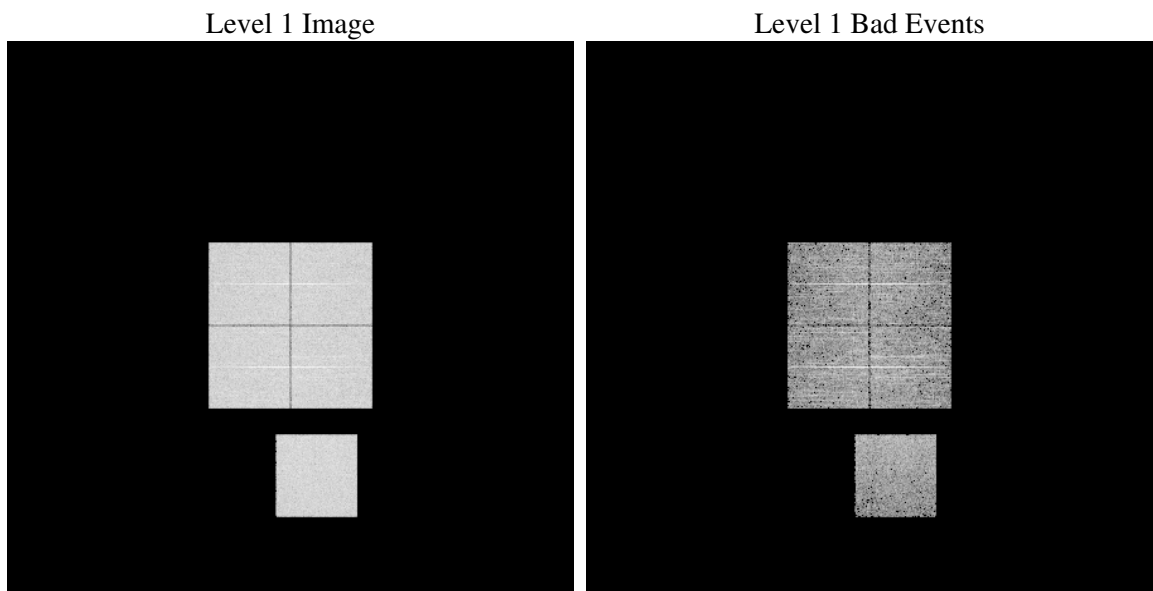
2.4 Star Slots

2.5 FID Slots

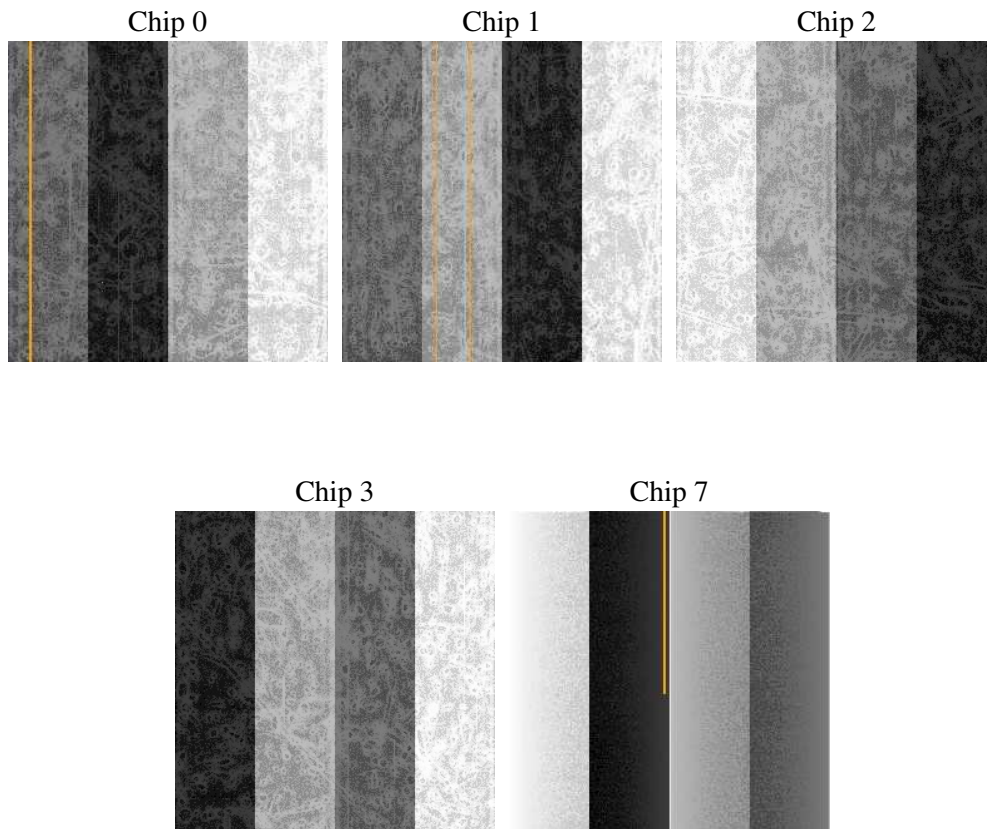
3 OBI Secondary

3.1 OBI

3.1.1 Images



3.1.2 Bias



3.1.3 Parameters

obi_num	0
ascdsver	7.6.7.1
caldsver	3.2.1
date	2006-04-18T01:43:48
revision	2

sched_exp_time	0.0
ontime	3801.7399098873
ontime0	3798.4988698959
ontime1	3801.7399098873
ontime2	3801.7399098873
ontime3	3801.7399098873
ontime7	3801.7399098873
llevents	675081

3.1.4 Events

	ccd 0	ccd 1	ccd 2	ccd 3	ccd 7
level 1 events	131478	132188	136119	135798	139498
rejected events	24586	25263	28031	28111	26531
rejected %	18%	19%	20%	20%	19%

	ccd 0	ccd 1	ccd 2	ccd 3	ccd 7
grade 0 events	59148	58908	60735	60458	19795
	44%	44%	44%	44%	14%
grade 1 events	332	260	399	337	53
	0%	0%	0%	0%	0%
grade 2 events	18670	18734	18187	18488	33912
	14%	14%	13%	13%	24%
grade 3 events	6878	6909	7101	7017	8153
	5%	5%	5%	5%	5%
grade 4 events	6900	6825	7135	6920	8167
	5%	5%	5%	5%	5%
grade 5 events	1598	1665	1584	1724	3205
	1%	1%	1%	1%	2%
grade 6 events	15403	15647	15010	14903	43057
	11%	11%	11%	10%	30%
grade 7 events	22549	23240	25968	25951	23156
	17%	17%	19%	19%	16%

A Summary

A.1 Status

V&V Scientist	Jen Lauer
V&V Date (YYYY-MM-DD)	2006.04.18
V&V Edition	1
V&V Disposition and Status	OK
V&V Charge Time	7.94812936

A.2 Comments