

V&V Reference Report

L2 ASCDS Version : 7.6.7.1

Observation 59634 - L2 Version 002
Chandra X-Ray Center

L2 Processing Date : Mar 8 2006

Contents

1	Front	2
2	OBI	3
2.1	OBI	3
2.1.1	Images	3
2.1.2	Bias	3
2.1.3	Parameters	4
2.1.4	Events	4
2.2	Compared Parameters	5
2.3	Aspect	6
2.4	Star Slots	8
2.5	FID Slots	8
A	Summary	9
A.1	Status	9
A.2	Comments	9

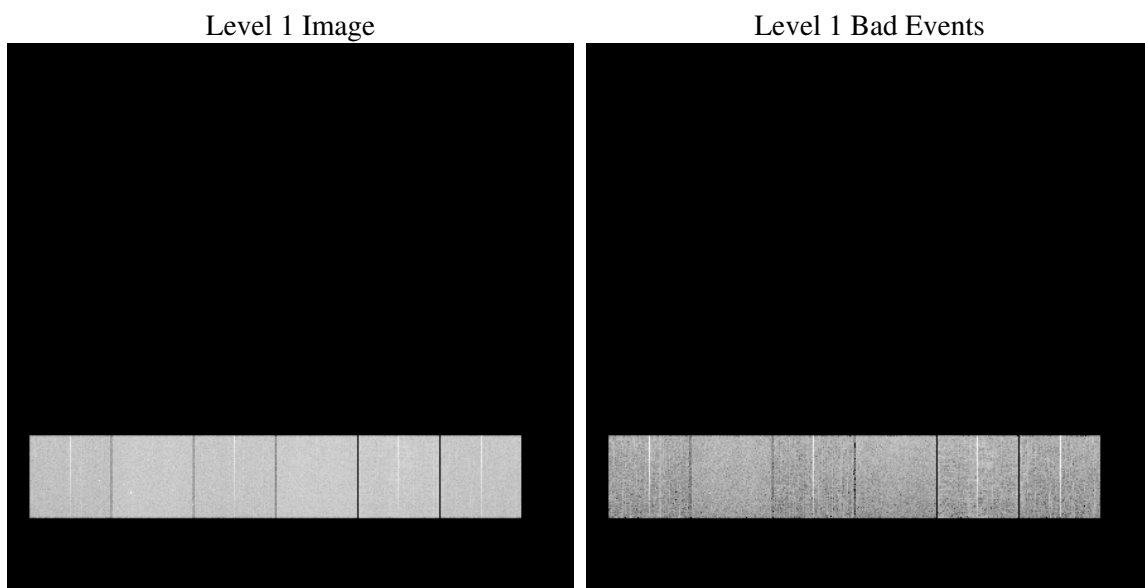
1 Front

seq_num	
obs_id	59634
title	ACIS-456789 diagnostics
observer	CHANDRA engineering request/realtime commanding
object	
dtcycle	0
cycle	P
ra_targ	0.0
dec_targ	0.0
ra_nom	118.06398186246
dec_nom	65.988177332311
roll_nom	302.68889169678
revision	2
ontime	8268.7999691963
livetime	8164.0954451128
ontime4	7001.5849246085
ontime5	8268.7999691963
ontime6	7516.8975508809
ontime7	8268.7999691963
ontime8	7863.6801616848
ontime9	7432.6327423453
l2events	1060706

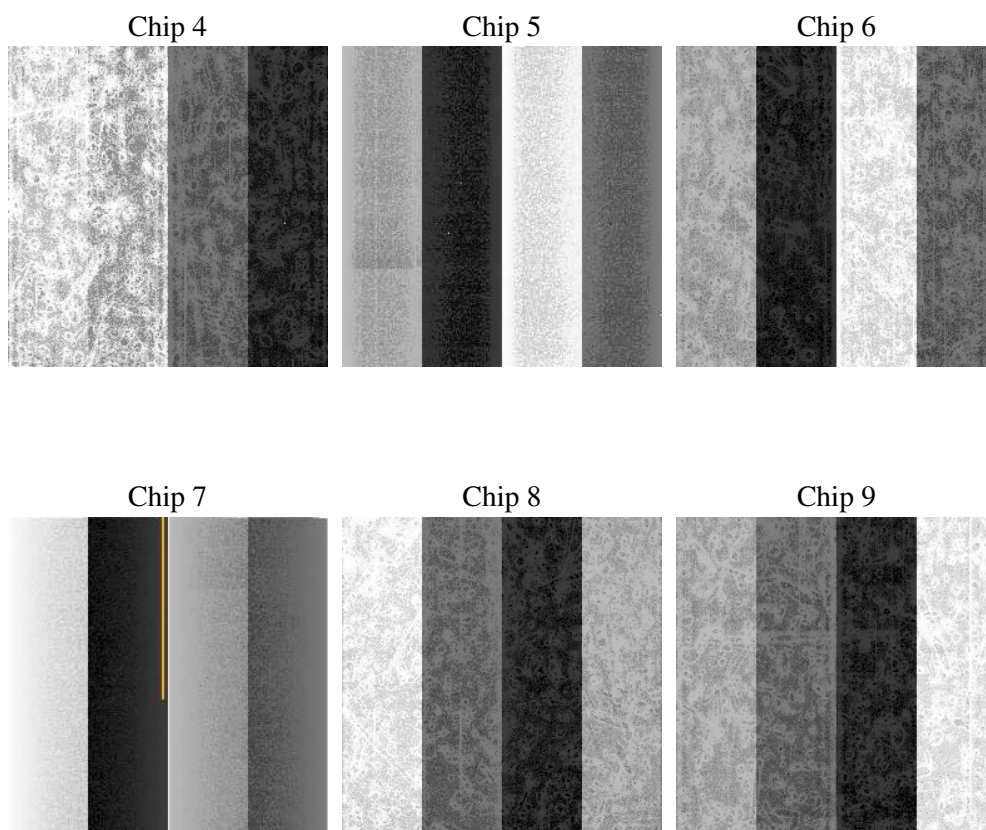
2 OBI

2.1 OBI

2.1.1 Images



2.1.2 Bias



2.1.3 Parameters

obi_num	0
ascdsver	7.6.7.1
caldsver	3.2.1
date	2006-03-09T02:18:18
revision	2

sched_exp_time	0.0
ontime	8280.7507377267
ontime4	7013.5356931388
ontime5	8280.7507377267
ontime6	7528.8483194113
ontime7	8280.7507377267
ontime8	7875.6309302151
ontime9	7444.5835108757
l1events	1489108

2.1.4 Events

	ccd 4	ccd 5	ccd 6	ccd 7	ccd 8	ccd 9
level 1 events	215318	256950	242331	272426	266777	235306
rejected events	55643	64559	56622	61418	65652	57045
rejected %	25%	25%	23%	22%	24%	24%

	ccd 4	ccd 5	ccd 6	ccd 7	ccd 8	ccd 9
grade 0 events	92705	18635	100882	33906	108779	97778
	43%	7%	41%	12%	40%	41%
grade 1 events	695	111	524	108	571	597
	0%	0%	0%	0%	0%	0%
grade 2 events	25086	90319	32278	64761	35521	30645
	11%	35%	13%	23%	13%	13%
grade 3 events	10804	5670	11381	14536	13433	11730
	5%	2%	4%	5%	5%	4%
grade 4 events	10681	5313	11488	14074	13115	11461
	4%	2%	4%	5%	4%	4%
grade 5 events	3298	6207	3438	6874	4493	3747
	1%	2%	1%	2%	1%	1%
grade 6 events	20614	72664	29919	83990	30515	26855
	9%	28%	12%	30%	11%	11%
grade 7 events	51435	58031	52421	54177	60350	52493
	23%	22%	21%	19%	22%	22%

2.2 Compared Parameters

Parameter	Planned	Actual	Parameter	Planned	Actual
Instrument	ACIS	ACIS	Obspar format version number	6	6
Detector	ACIS-456789	ACIS-456789	Obspar file type	PREDICTED	ACTUAL
Grating	NONE	NONE	Obspar update status	NONE	UPDATED
Data mode	FAINT	FAINT	On-chip summing requested	N	N
Observation mode	SECONDARY	SECONDARY	Subarray requested	NONE	NONE
Pointing RA	0	118.0639818624632	Alternating exposures requested	N	N
Pointing Dec	0	65.98817733231139	Primary exposure time	3.2	3.2
Pointing Roll	0.0	302.6888916967771			
SIM focus pos (mm)	-0.684267	-0.6828225247311905			
SIM defocus (mm)	0	0.8505141146731063			
SIM translation stage pos (mm)	-190.132523	250.466033080201			
SIM translation stage offset (mm)	0	-0.01005468664627074			
Observation start time	234202324.239162	234202323.21417			
Observation start date	2005-06-03T16:12:04	2005-06-03T16:12:03			
Observation end time	234225794.690233	234225793.66524			
Observation end date	2005-06-03T22:43:15	2005-06-03T22:43:13			
Read mode	TIMED	TIMED			

2.3 Aspect

2.4 Star Slots

2.5 FID Slots

A Summary

A.1 Status

V&V Scientist	Beth Sundheim
V&V Date (YYYY-MM-DD)	2006.03.09
V&V Edition	1
V&V Disposition and Status	OK
V&V Charge Time	8.26879996

A.2 Comments

Focal plane temperature is elevated during initial ~1 ksec of observation.