

V&V Reference Report

L2 ASCDS Version : 7.6.7.1

Observation 59414 - L2 Version 002
Chandra X-Ray Center

L2 Processing Date : Apr 1 2006

Contents

1	Front	2
2	OBI	3
2.1	OBI	3
2.1.1	Images	3
2.1.2	Bias	3
2.1.3	Parameters	4
2.1.4	Events	4
2.2	Compared Parameters	5
2.3	Aspect	6
2.4	Star Slots	8
2.5	FID Slots	8
A	Summary	9
A.1	Status	9
A.2	Comments	9

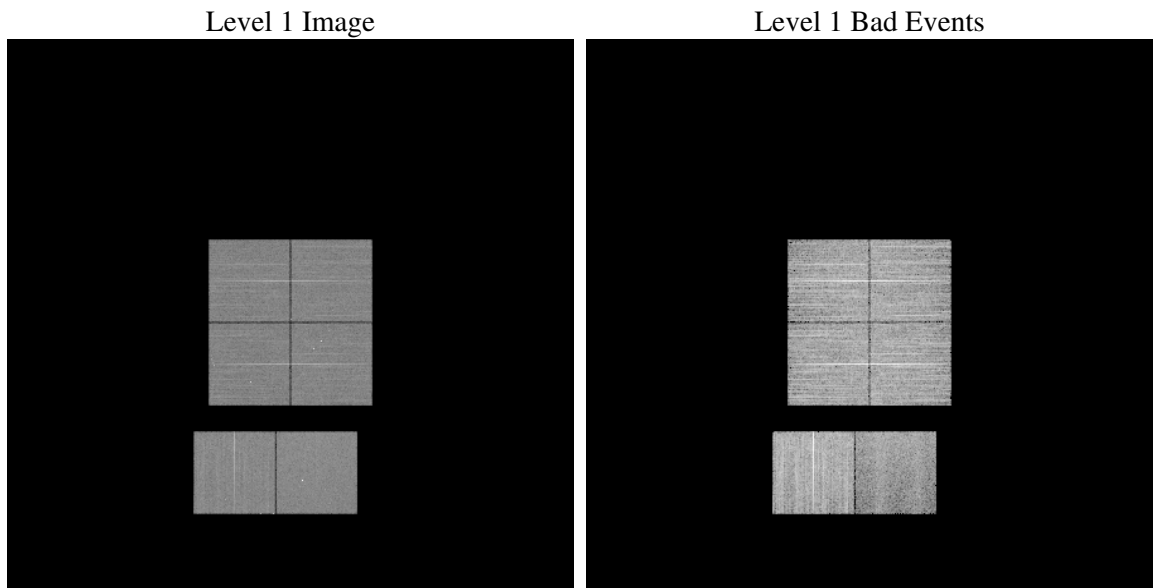
1 Front

seq_num	
obs_id	59414
title	ACIS-012367 diagnostics
observer	CHANDRA engineering request/realtime commanding
object	
dtcycle	0
cycle	P
ra_targ	0.0
dec_targ	0.0
ra_nom	1.9795872156391
dec_nom	31.977254321958
roll_nom	199.75795908287
revision	2
ontime	6003.0289122462
livetime	5927.0149455693
ontime0	5620.6349082291
ontime1	5824.857585609
ontime2	5419.7766997814
ontime3	5646.4808398485
ontime6	5996.711111635
ontime7	6003.0289122462
l2events	675630

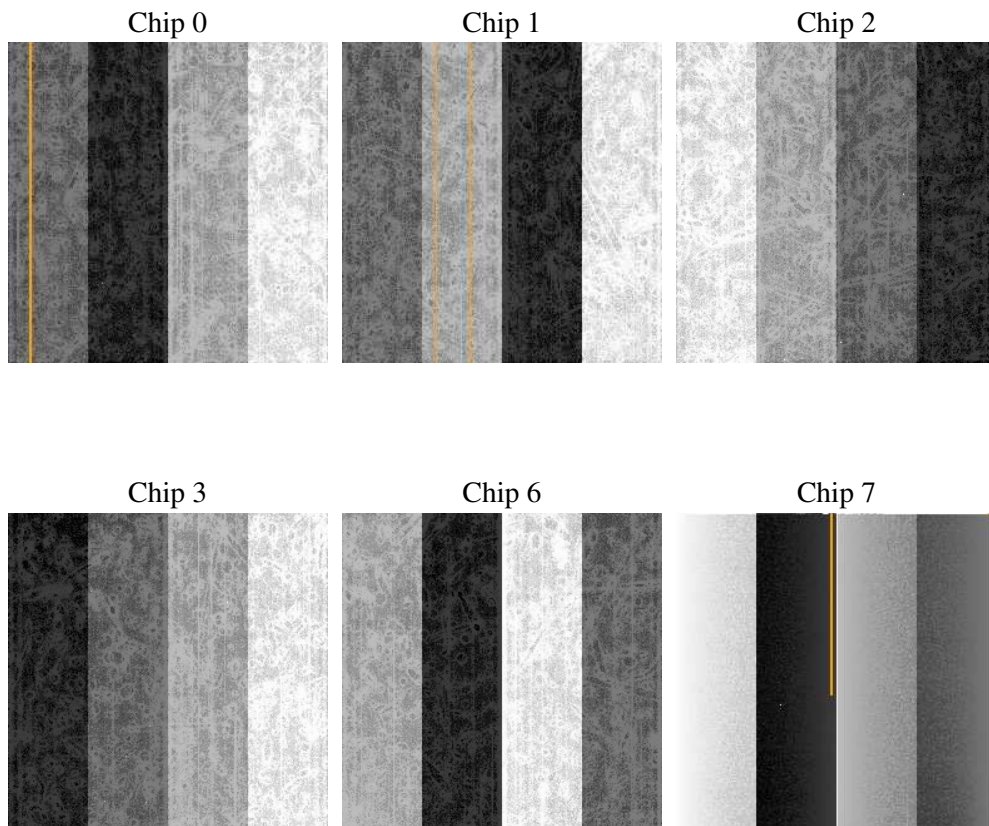
2 OBI

2.1 OBI

2.1.1 Images



2.1.2 Bias



2.1.3 Parameters

obi_num	0
ascdsver	7.6.7.1
caldsver	3.2.1
date	2006-04-01T05:26:15
revision	2

sched_exp_time	0.0
ontime	6005.5811662674
ontime0	5623.146122247
ontime1	5827.3277596235
ontime2	5422.2058337927
ontime3	5649.074133873
ontime6	5999.0992056727
ontime7	6005.5811662674
l1events	1083281

2.1.4 Events

	ccd 0	ccd 1	ccd 2	ccd 3	ccd 6	ccd 7
level 1 events	171967	174757	171243	177202	195734	192378
rejected events	62773	60663	64497	64547	73582	42108
rejected %	36%	34%	37%	36%	37%	21%

	ccd 0	ccd 1	ccd 2	ccd 3	ccd 6	ccd 7
grade 0 events	21624	20973	18646	20878	17304	28784
	12%	12%	10%	11%	8%	14%
grade 1 events	222	222	209	192	233	94
	0%	0%	0%	0%	0%	0%
grade 2 events	61012	65367	62856	65889	75111	29101
	35%	37%	36%	37%	38%	15%
grade 3 events	2437	2434	2020	2095	1973	18718
	1%	1%	1%	1%	1%	9%
grade 4 events	2406	2297	1998	2188	1901	14414
	1%	1%	1%	1%	0%	7%
grade 5 events	1979	2028	1869	2126	2267	5059
	1%	1%	1%	1%	1%	2%
grade 6 events	21785	23085	21304	21667	25928	59347
	12%	13%	12%	12%	13%	30%
grade 7 events	60502	58351	62341	62167	71017	36861
	35%	33%	36%	35%	36%	19%

2.2 Compared Parameters

Parameter	Planned	Actual	Parameter	Planned	Actual
Instrument	ACIS	ACIS	Obspar format version number	6	6
Detector	ACIS-012367	ACIS-012367	Obspar file type	PREDICTED	ACTUAL
Grating	NONE	NONE	Obspar update status	NONE	UPDATED
Data mode	FAINT	FAINT	On-chip summing requested	N	N
Observation mode	SECONDARY	SECONDARY	Subarray requested	NONE	NONE
Pointing RA	0	1.979587215639122	Alternating exposures requested	N	N
Pointing Dec	0	31.97725432195837	Primary exposure time	3.2	3.2
Pointing Roll	0.0	199.7579590828727			
SIM focus pos (mm)	-0.782348	-0.7809083437167272			
SIM defocus (mm)	0	0.7524282956875696			
SIM translation stage pos (mm)	-233.592463	250.466033080201			
SIM translation stage offset (mm)	0	-0.01005468664627074			
Observation start time	244902984.429479	244902983.40448			
Observation start date	2005-10-05T12:36:24	2005-10-05T12:36:23			
Observation end time	244920206.480272	244920205.45527			
Observation end date	2005-10-05T17:23:26	2005-10-05T17:23:25			
Read mode	TIMED	TIMED			

2.3 Aspect

2.4 Star Slots

2.5 FID Slots

A Summary

A.1 Status

V&V Scientist	Jen Lauer
V&V Date (YYYY-MM-DD)	2006.04.03
V&V Edition	1
V&V Disposition and Status	OK
V&V Charge Time	6.00302891

A.2 Comments

As a consequence of the DEA-A shutdown anomaly on Sep 15th (DOY258), the the reported value of the ACIS FP temperature was ~1.3 degrees warmer than the actual temperature. GOs should subtract 1.3 degrees from the reported temperature to determine the true temperature.