

V&V Reference Report

L2 ASCDS Version : 8.4.4

Observation 58434 - L2 Version 2
Chandra X-Ray Center

L2 Processing Date : Apr 23 2012

Contents

1	Front	2
2	OBI	3
2.1	OBI	3
2.1.1	Images	3
2.1.2	Bias	3
2.1.3	Parameters	4
2.1.4	Events	4
2.2	Compared Parameters	5
2.3	Star Slots	6
2.4	FID Slots	6
A	Summary	7
A.1	Status	7
A.2	Comments	7

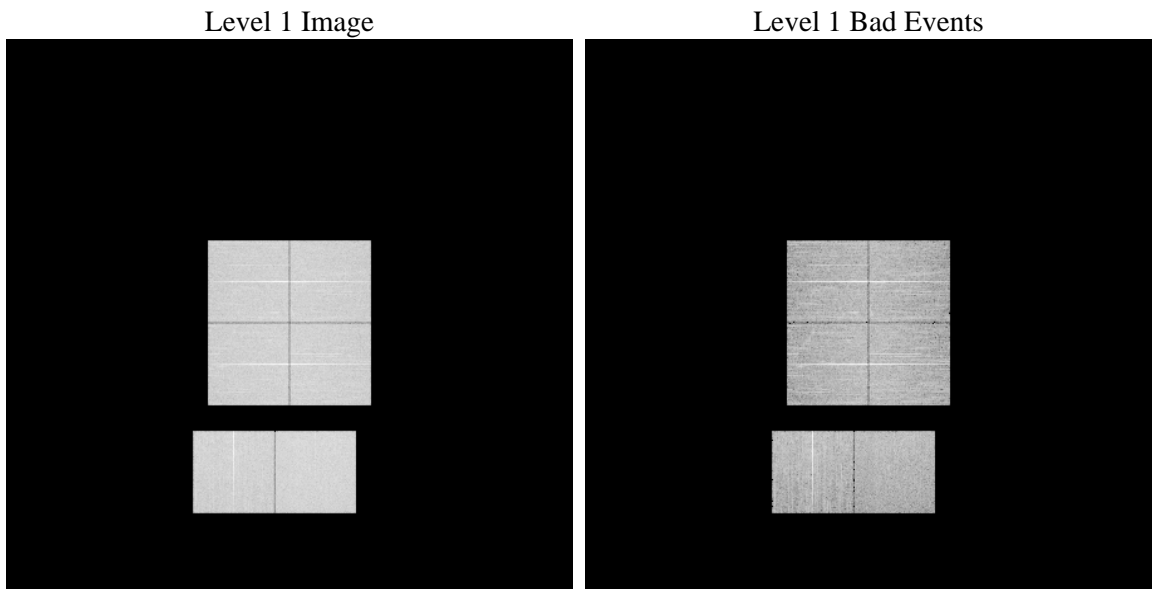
1 Front

seq_num	 	Sequence number
obs_id	58434	Observation id
title	ACIS-012367 diagnostics	Proposal title
observer	CHANDRA engineering request/realtime commanding	Principal investig
object	 	Source name
dtcycle	0	
cycle	P	events from which exps? Prim/Second/Both
ra_targ	0.0	Observer's specified target RA [deg]
dec_targ	0.0	Observer's specified target Dec [deg]
ra_nom	174.41121946588	Nominal RA [deg]
dec_nom	-2.1277011626274	Nominal Dec [deg]
roll_nom	254.35245023398	Nominal Roll [deg]
revision	2	Processing version of data
ontime	8271.999969244	Sum of GTIs [s]
livetime	8167.254924833	Livetime [s]
ontime0	8271.999969244	Sum of GTIs [s]
ontime1	8271.999969244	Sum of GTIs [s]
ontime2	8271.999969244	Sum of GTIs [s]
ontime3	8271.999969244	Sum of GTIs [s]
ontime6	8271.999969244	Sum of GTIs [s]
ontime7	8271.999969244	Sum of GTIs [s]
l2events	745978	Number of level 2 events

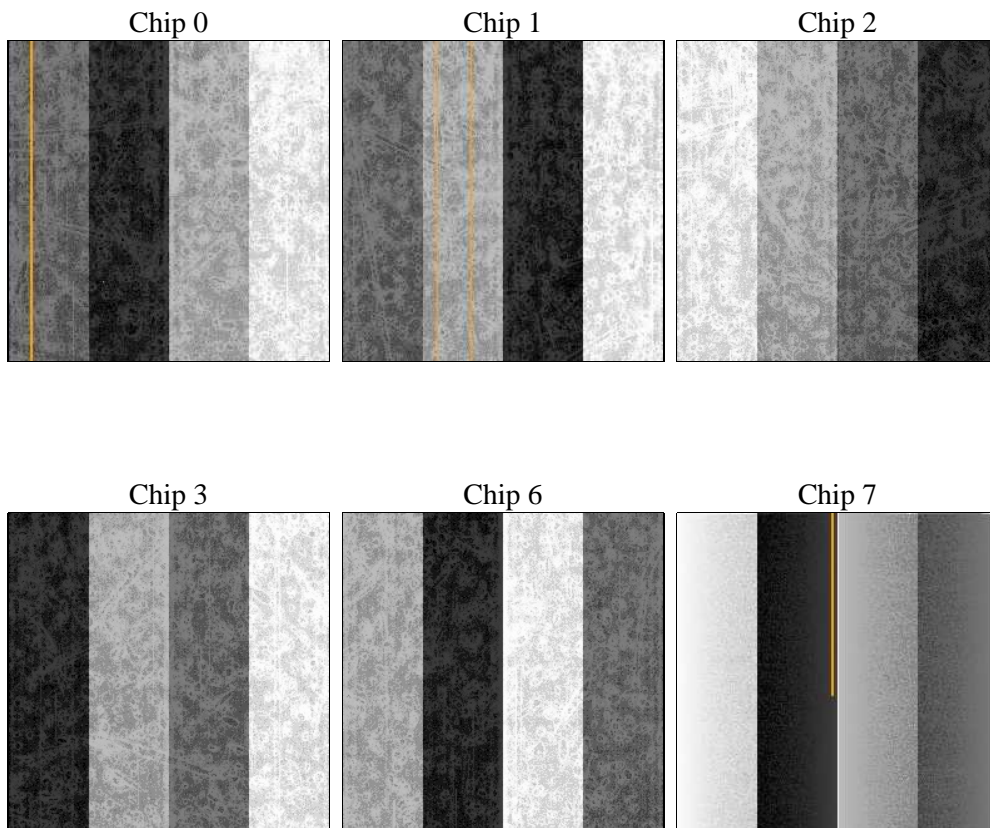
2 OBI

2.1 OBI

2.1.1 Images



2.1.2 Bias



2.1.3 Parameters

obi_num	0	Obi number	sched_exp_time	0.0	[s] Scheduled observation exposure time
ascdsver	8.4.4	Processing system revision	ontime	8271.999969244	Sum of GTIs [s]
caldsver	4.4.9	 	ontime0	8271.999969244	Sum of GTIs [s]
date	2012-04-23T10:06:06	Date and time of file creation	ontime1	8271.999969244	Sum of GTIs [s]
revision	2	Processing version of data	ontime2	8271.999969244	Sum of GTIs [s]
			ontime3	8271.999969244	Sum of GTIs [s]
			ontime6	8271.999969244	Sum of GTIs [s]
			ontime7	8271.999969244	Sum of GTIs [s]
			l1events	1213461	Number of level 1 events

2.1.4 Events

	ccd 0	ccd 1	ccd 2	ccd 3	ccd 6	ccd 7		ccd 0	ccd 1	ccd 2	ccd 3	ccd 6	ccd 7
level 1 events	194445	193018	198827	200396	204022	222753	grade 0 events	67807	66046	69760	69667	68815	32604
rejected events	70134	68819	73755	75298	74841	64833		34%	34%	35%	34%	33%	14%
rejected %	36%	35%	37%	37%	36%	29%	grade 1 events	452	416	489	495	393	155
								0%	0%	0%	0%	0%	0%
							grade 2 events	21636	23427	20763	20969	23149	34642
								11%	12%	10%	10%	11%	15%
							grade 3 events	8113	7930	8491	8254	7947	14822
								4%	4%	4%	4%	3%	6%
							grade 4 events	8172	7960	8259	8525	8104	14818
								4%	4%	4%	4%	3%	6%
							grade 5 events	3871	3870	3566	4222	4130	10268
								1%	2%	1%	2%	2%	4%
							grade 6 events	18627	18876	17851	17732	21209	61090
								9%	9%	8%	8%	10%	27%
							grade 7 events	65767	64493	69648	70532	70275	54354
								33%	33%	35%	35%	34%	24%

2.2 Compared Parameters

Parameter	Planned	Actual	Parameter	Planned	Actual
Instrument	ACIS	ACIS	Obspar format version number	7	7
Detector	ACIS-012367	ACIS-012367	Obspar file type	PREDICTED	ACTUAL
Grating	NONE	NONE	Obspar update status	NONE	UPDATED
Data mode	FAINT	FAINT	On-chip summing requested	N	N
Observation mode	SECONDARY	SECONDARY	Subarray requested	NONE	NONE
[deg] Pointing RA	0	174.4112194658753	Alternating exposures requested	N	N
[deg] Pointing Dec	0	-2.12770116262743	[s] Primary exposure time	3.2	3.2
[deg] Pointing Roll	0.0	254.3524502339813			
[mm] SIM focus pos	-0.782348	-0.7809083437167272			
[mm] SIM defocus	0	0.7524282956875696			
[mm] SIM translation stage pos	-233.592463	250.466033080201			
[mm] SIM translation stage offset	0	-0.01005468664627074			
[s] Observation start time (MET)	292921686.479124	292921685.45412			
Observation start date	2007-04-14T07:08:06	2007-04-14T07:08:05			
[s] Observation end time (MET)	292945632.530265	292945631.50526			
Observation end date	2007-04-14T13:47:13	2007-04-14T13:47:11			
Read mode	TIMED	TIMED			

2.3 Star Slots

2.4 FID Slots

A Summary

A.1 Status

V&V Scientist	Beth Sundheim
V&V Date (YYYY-MM-DD)	2012.04.24
V&V Edition	1
V&V Disposition and Status	OK
V&V Charge Time	8.271999969244

A.2 Comments