

V&V Reference Report

L2 ASCDS Version : 8.4.4

Observation 58134 - L2 Version 2
Chandra X-Ray Center

L2 Processing Date : May 4 2012

Contents

1	Front	2
2	OBI	3
2.1	OBI	3
2.1.1	Images	3
2.1.2	Bias	3
2.1.3	Parameters	4
2.1.4	Events	4
2.2	Compared Parameters	5
2.3	Star Slots	6
2.4	FID Slots	6
A	Summary	7
A.1	Status	7
A.2	Comments	7

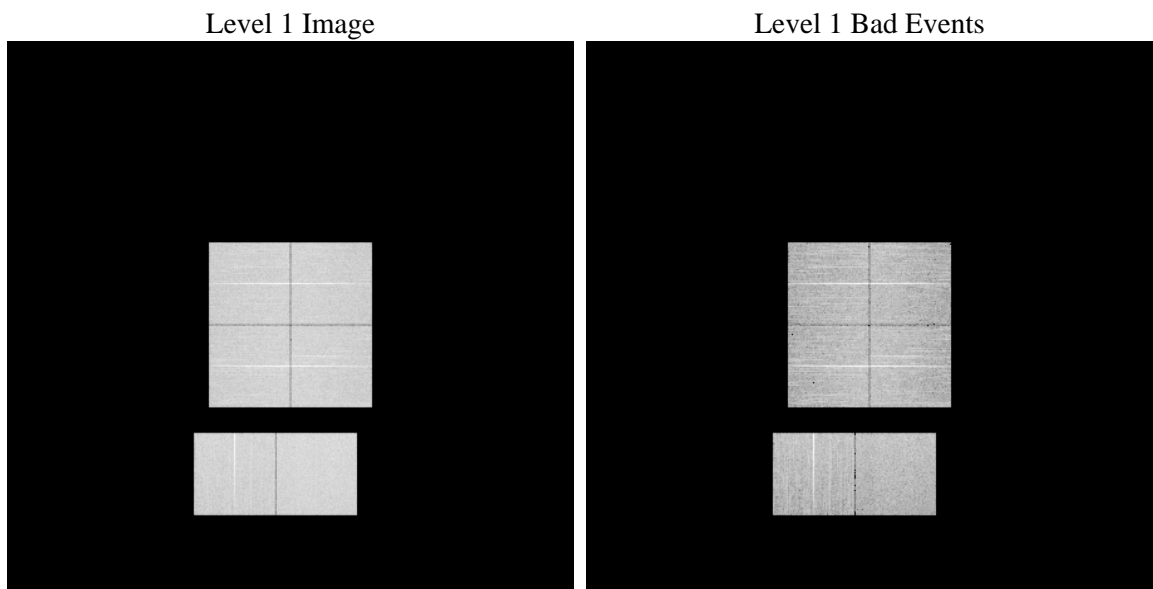
1 Front

seq_num	 	Sequence number
obs_id	58134	Observation id
title	ACIS-012367 diagnostics	Proposal title
observer	CHANDRA engineering request/realtime commanding	Principal investig
object	 	Source name
dtcycle	0	
cycle	P	events from which exps? Prim/Second/Both
ra_targ	0.0	Observer's specified target RA [deg]
dec_targ	0.0	Observer's specified target Dec [deg]
ra_nom	71.995285616489	Nominal RA [deg]
dec_nom	6.0283511148984	Nominal Dec [deg]
roll_nom	66.485226392401	Nominal Roll [deg]
revision	2	Processing version of data
ontime	8156.7999696732	Sum of GTIs [s]
livetime	8053.5136570219	Livetime [s]
ontime0	8156.7999696732	Sum of GTIs [s]
ontime1	8156.7999696732	Sum of GTIs [s]
ontime2	8156.7999696732	Sum of GTIs [s]
ontime3	8156.7999696732	Sum of GTIs [s]
ontime6	8156.7999696732	Sum of GTIs [s]
ontime7	8156.7999696732	Sum of GTIs [s]
l2events	655380	Number of level 2 events

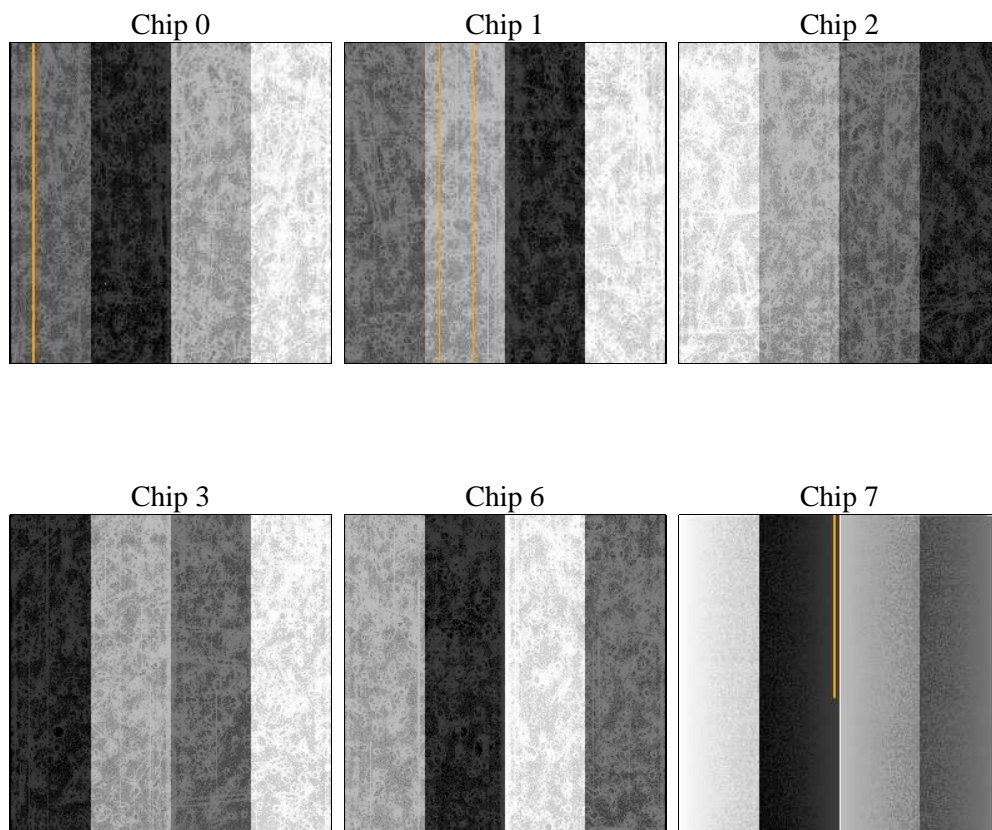
2 OBI

2.1 OBI

2.1.1 Images



2.1.2 Bias



2.1.3 Parameters

obi_num	0	Obi number	sched_exp_time	0.0	[s] Scheduled observation exposure time
ascdsver	8.4.4	Processing system revision	ontime	8156.7999696732	Sum of GTIs [s]
caldsver	4.4.9	 	ontime0	8156.7999696732	Sum of GTIs [s]
date	2012-05-04T04:10:45	Date and time of file creation	ontime1	8156.7999696732	Sum of GTIs [s]
revision	2	Processing version of data	ontime2	8156.7999696732	Sum of GTIs [s]
			ontime3	8156.7999696732	Sum of GTIs [s]
			ontime6	8156.7999696732	Sum of GTIs [s]
			ontime7	8156.7999696732	Sum of GTIs [s]
			l1events	1135458	Number of level 1 events

2.1.4 Events

	ccd 0	ccd 1	ccd 2	ccd 3	ccd 6	ccd 7		ccd 0	ccd 1	ccd 2	ccd 3	ccd 6	ccd 7
level 1 events	180687	178693	186147	188059	190362	211510	grade 0 events	59761	58565	60429	61078	61039	29573
rejected events	71984	70103	77607	78709	77132	68287		33%	32%	32%	32%	32%	13%
rejected %	39%	39%	41%	41%	40%	32%	grade 1 events	438	388	496	471	409	164
								0%	0%	0%	0%	0%	0%
							grade 2 events	19743	20369	18873	18919	20124	31465
								10%	11%	10%	10%	10%	14%
							grade 3 events	7308	7156	7328	7494	7444	13839
								4%	4%	3%	3%	3%	6%
							grade 4 events	7263	7264	7413	7607	7473	13765
								4%	4%	3%	4%	3%	6%
							grade 5 events	3937	4138	3738	4416	4288	10952
								2%	2%	2%	2%	2%	5%
							grade 6 events	16269	16746	16086	15910	18796	56588
								9%	9%	8%	8%	9%	26%
							grade 7 events	65968	64067	71784	72164	70789	55164
								36%	35%	38%	38%	37%	26%

2.2 Compared Parameters

Parameter	Planned	Actual
Instrument	ACIS	ACIS
Detector	ACIS-012367	ACIS-012367
Grating	NONE	NONE
Data mode	FAINT	FAINT
Observation mode	SECONDARY	SECONDARY
[deg] Pointing RA	0	71.99528561648924
[deg] Pointing Dec	0	6.028351114898423
[deg] Pointing Roll	0.0	66.48522639240051
[mm] SIM focus pos	-0.782348	-1.038866356238299
[mm] SIM defocus	0	0.4944702831659975
[mm] SIM translation stage pos	-233.592463	250.466033080201
[mm] SIM translation stage offset	0	-0.01005468664627074
[s] Observation start time (MET)	310967406.8447	310967405.81971
Observation start date	2007-11-09T03:50:07	2007-11-09T03:50:05
[s] Observation end time (MET)	310990198.745799	310990197.72081
Observation end date	2007-11-09T10:09:59	2007-11-09T10:09:57
Read mode	TIMED	TIMED

Parameter	Planned	Actual
Obspar format version number	7	7
Obspar file type	PREDICTED	ACTUAL
Obspar update status	NONE	UPDATED
On-chip summing requested	N	N
Subarray requested	NONE	NONE
Alternating exposures requested	N	N
[s] Primary exposure time	3.2	3.2

2.3 Star Slots

2.4 FID Slots

A Summary

A.1 Status

V&V Scientist	Jen Lauer
V&V Date (YYYY-MM-DD)	2012.05.07
V&V Edition	1
V&V Disposition and Status	OK
V&V Charge Time	8.1567999696732

A.2 Comments