

# V&V Reference Report

## L2 ASCDS Version : 8.4.4

Observation 58074 - L2 Version 2  
Chandra X-Ray Center

L2 Processing Date : May 7 2012

## Contents

<b>1</b>	<b>Front</b>	<b>2</b>
<b>2</b>	<b>OBI</b>	<b>3</b>
2.1	OBI . . . . .	3
2.1.1	Images . . . . .	3
2.1.2	Bias . . . . .	3
2.1.3	Parameters . . . . .	4
2.1.4	Events . . . . .	4
2.2	Compared Parameters . . . . .	5
2.3	Star Slots . . . . .	6
2.4	FID Slots . . . . .	6
<b>A</b>	<b>Summary</b>	<b>7</b>
A.1	Status . . . . .	7
A.2	Comments . . . . .	7

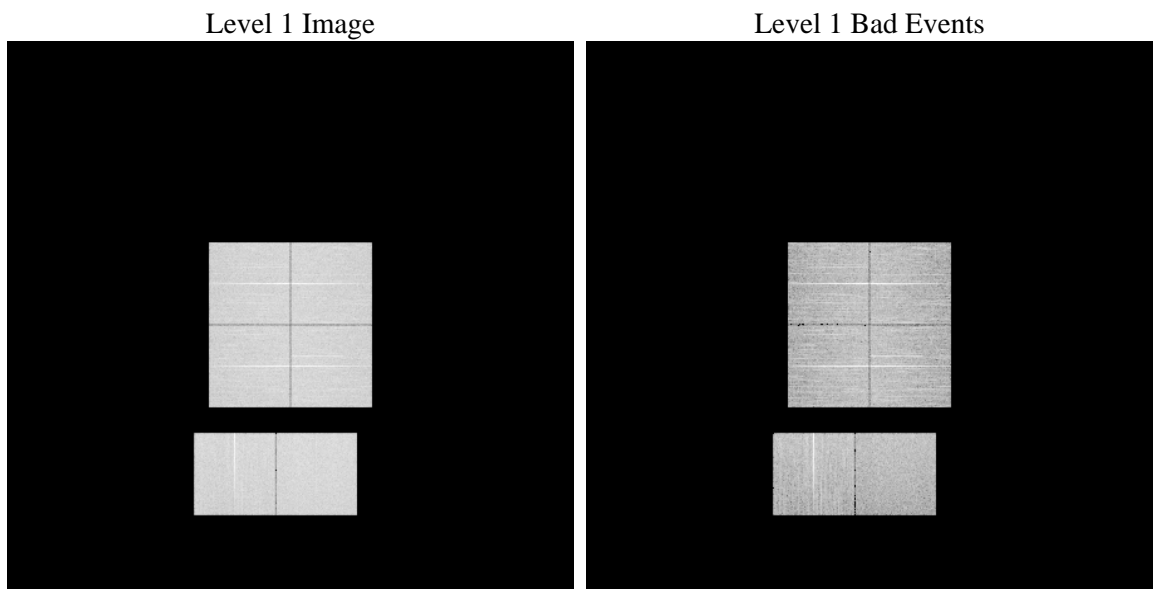
# 1 Front

seq_num	&#160	Sequence number
obs_id	58074	Observation id
title	ACIS-012367 diagnostics	Proposal title
observer	CHANDRA engineering request/realtime commanding	Principal investig
object	&#160	Source name
dtcycle	0	&#160
cycle	P	events from which exps? Prim/Second/Both
ra_targ	0.0	Observer's specified target RA [deg]
dec_targ	0.0	Observer's specified target Dec [deg]
ra_nom	51.306486323274	Nominal RA [deg]
dec_nom	36.971989423944	Nominal Dec [deg]
roll_nom	248.50685610595	Nominal Roll [deg]
revision	2	Processing version of data
ontime	7795.1999710202	Sum of GTIs [s]
livetime	7696.4924552813	Livetime [s]
ontime0	7795.1999710202	Sum of GTIs [s]
ontime1	7795.1999710202	Sum of GTIs [s]
ontime2	7795.1999710202	Sum of GTIs [s]
ontime3	7795.1999710202	Sum of GTIs [s]
ontime6	7795.1999710202	Sum of GTIs [s]
ontime7	7795.1999710202	Sum of GTIs [s]
l2events	729999	Number of level 2 events

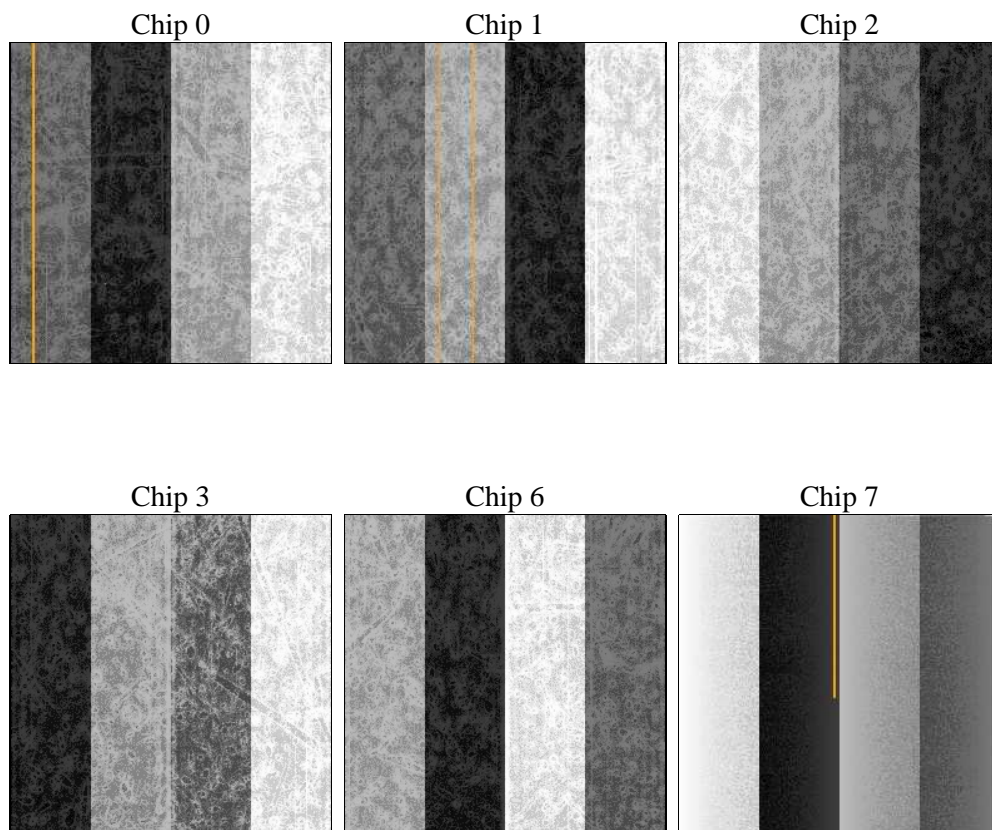
## 2 OBI

### 2.1 OBI

#### 2.1.1 Images



#### 2.1.2 Bias



### 2.1.3 Parameters

obi_num	0	Obi number	sched_exp_time	0.0	[s] Scheduled observation exposure time
ascdsver	8.4.4	Processing system revision	ontime	7795.1999710202	Sum of GTIs [s]
caldsver	4.4.9	&#160	ontime0	7795.1999710202	Sum of GTIs [s]
date	2012-05-07T03:25:37	Date and time of file creation	ontime1	7795.1999710202	Sum of GTIs [s]
revision	2	Processing version of data	ontime2	7795.1999710202	Sum of GTIs [s]
			ontime3	7795.1999710202	Sum of GTIs [s]
			ontime6	7795.1999710202	Sum of GTIs [s]
			ontime7	7795.1999710202	Sum of GTIs [s]
			l1events	1193870	Number of level 1 events

### 2.1.4 Events

	ccd 0	ccd 1	ccd 2	ccd 3	ccd 6	ccd 7		ccd 0	ccd 1	ccd 2	ccd 3	ccd 6	ccd 7
level 1 events	193581	194328	192811	197904	201535	213711	grade 0 events	65612	63475	65247	67628	65108	31724
rejected events	70654	70350	72995	73875	74450	62183		33%	32%	33%	34%	32%	14%
rejected %	36%	36%	37%	37%	36%	29%	grade 1 events	467	404	525	524	402	148
								0%	0%	0%	0%	0%	0%
							grade 2 events	21736	24400	19968	21045	23383	33424
								11%	12%	10%	10%	11%	15%
							grade 3 events	8005	7756	7782	8112	7799	13714
								4%	3%	4%	4%	3%	6%
							grade 4 events	7890	7670	8000	8025	7684	13590
								4%	3%	4%	4%	3%	6%
							grade 5 events	3850	3857	3584	4218	4092	9967
								1%	1%	1%	2%	2%	4%
							grade 6 events	19748	20741	18875	19219	23170	59149
								10%	10%	9%	9%	11%	27%
							grade 7 events	66273	66025	68830	69133	69897	51995
								34%	33%	35%	34%	34%	24%

## 2.2 Compared Parameters

Parameter	Planned	Actual	Parameter	Planned	Actual
Instrument	ACIS	ACIS	Obspar format version number	7	7
Detector	ACIS-012367	ACIS-012367	Obspar file type	PREDICTED	ACTUAL
Grating	NONE	NONE	Obspar update status	NONE	UPDATED
Data mode	FAINT	FAINT	On-chip summing requested	N	N
Observation mode	SECONDARY	SECONDARY	Subarray requested	NONE	NONE
[deg] Pointing RA	0	51.30648632327406	Alternating exposures requested	N	N
[deg] Pointing Dec	0	36.97198942394371	[s] Primary exposure time	3.2	3.2
[deg] Pointing Roll	0.0	248.5068561059541			
[mm] SIM focus pos	-0.782348	-0.6828225247311905			
[mm] SIM defocus	0	0.8505141146731063			
[mm] SIM translation stage pos	-233.592463	250.466033080201			
[mm] SIM translation stage offset	0	-0.01005468664627074			
[s] Observation start time (MET)	313898894.686318	313898893.66134			
Observation start date	2007-12-13T02:08:15	2007-12-13T02:08:13			
[s] Observation end time (MET)	313917988.38724	313917987.36226			
Observation end date	2007-12-13T07:26:28	2007-12-13T07:26:27			
Read mode	TIMED	TIMED			

## 2.3 Star Slots

## 2.4 FID Slots

## **A Summary**

### **A.1 Status**

V&V Scientist	Jen Lauer
V&V Date (YYYY-MM-DD)	2012.05.08
V&V Edition	1
V&V Disposition and Status	OK
V&V Charge Time	7.7951999710202

### **A.2 Comments**