

# V&V Reference Report

## L2 ASCDS Version : 8.5.1.1

Observation 5784 - L2 Version 3  
Chandra X-Ray Center

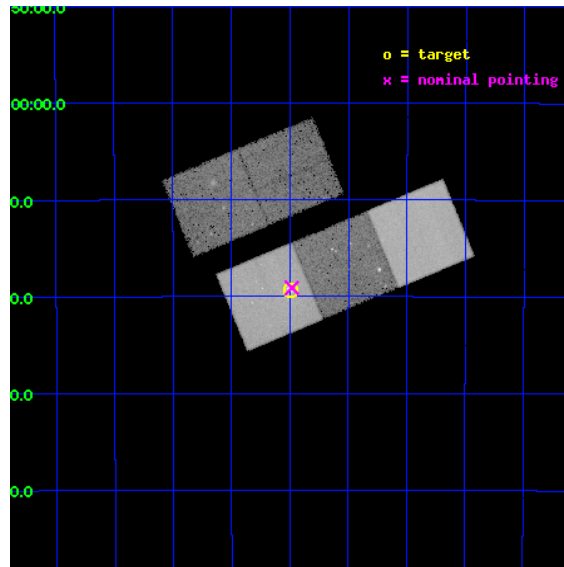
L2 Processing Date : Dec 22 2012

## Contents

<b>1</b>	<b>Front</b>	<b>2</b>
<b>2</b>	<b>OBI</b>	<b>3</b>
2.1	OBI . . . . .	3
2.1.1	Images . . . . .	3
2.1.2	Bias . . . . .	3
2.1.3	Parameters . . . . .	4
2.1.4	Events . . . . .	4
2.2	Compared Parameters . . . . .	5
2.3	Aspect . . . . .	6
2.4	Star Slots . . . . .	9
2.4.1	Slot 3 . . . . .	9
2.4.2	Slot 4 . . . . .	10
2.4.3	Slot 5 . . . . .	11
2.4.4	Slot 6 . . . . .	12
2.4.5	Slot 7 . . . . .	13
2.5	FID Slots . . . . .	14
2.5.1	Slot 0 . . . . .	14
2.5.2	Slot 1 . . . . .	15
2.5.3	Slot 2 . . . . .	16
<b>A</b>	<b>Summary</b>	<b>17</b>
A.1	Status . . . . .	17
A.2	Comments . . . . .	17

# 1 Front

seq_num	800497	Sequence number
obs_id	5784	Observation id
title	Fossil groups in the local Universe	Proposal title
observer	Dr Alastair Sanderson	Principal investigator
object	ESO 351-021	Source name
dtcycle	0	&#160
cycle	P	events from which exps? Prim/Second/Both
ra_targ	13.749583	Observer's specified target RA [deg]
dec_targ	-35.321389	Observer's specified target Dec [deg]
ra_nom	13.745803842423	Nominal RA [deg]
dec_nom	-35.318301706014	Nominal Dec [deg]
roll_nom	157.4772634176	Nominal Roll [deg]
revision	3	Processing version of data
ontime	40017.899923027	Sum of GTIs [s]
livetime	39495.036599783	Livetime [s]
ontime2	40014.758952767	Sum of GTIs [s]
ontime3	40005.336042106	Sum of GTIs [s]
ontime5	40017.899923027	Sum of GTIs [s]
ontime6	40014.758932859	Sum of GTIs [s]
ontime7	40017.899923027	Sum of GTIs [s]
l2events	362790	Number of level 2 events

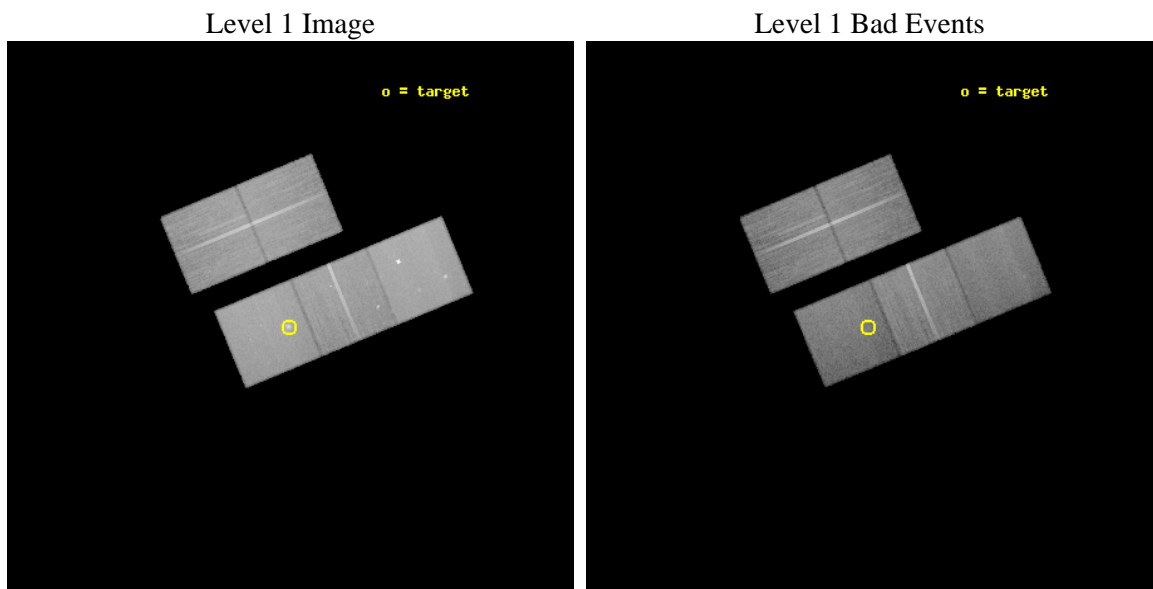




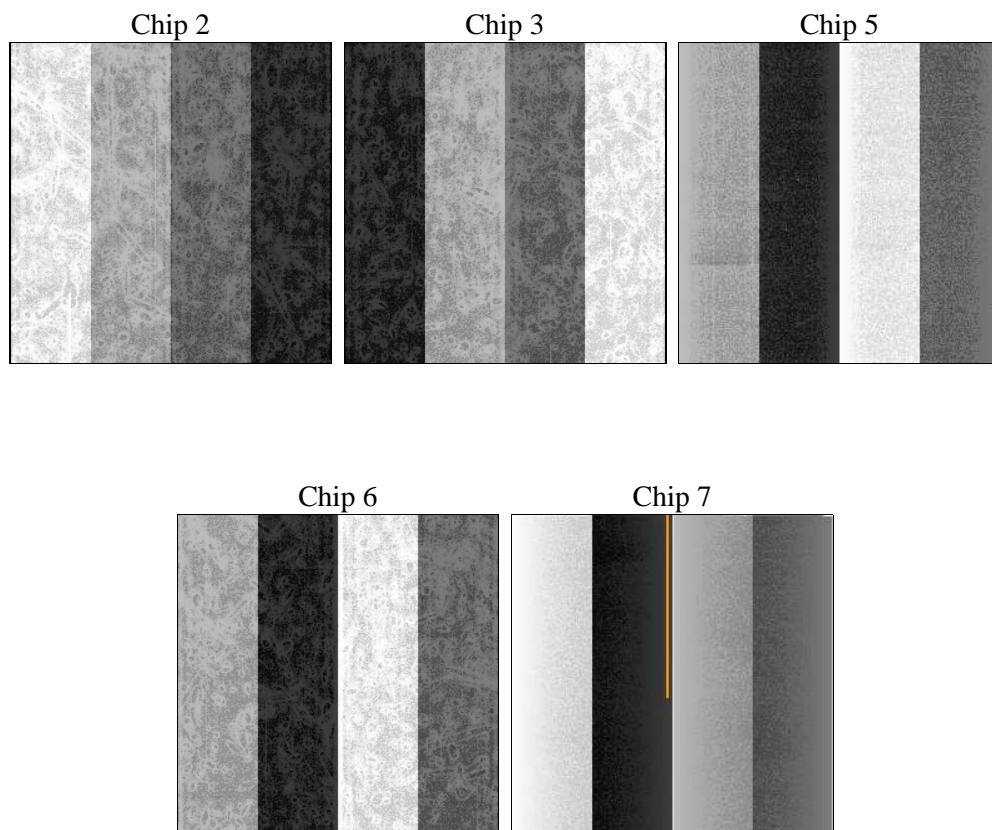
## 2 OBI

### 2.1 OBI

#### 2.1.1 Images



#### 2.1.2 Bias



### 2.1.3 Parameters

obi_num	1	Obi number	sched_exp_time	39841.864000	[s] Scheduled observation exposure time
ascdsver	8.5.1.1	Processing system revision	ontime	40017.899923027	Sum of GTIs [s]
caldsver	4.5.5	&#160	ontime2	40014.758952767	Sum of GTIs [s]
date	2012-12-22T17:02:41	Date and time of file creation	ontime3	40005.336042106	Sum of GTIs [s]
revision	3	Processing version of data	ontime5	40017.899923027	Sum of GTIs [s]
			ontime6	40014.758932859	Sum of GTIs [s]
			ontime7	40017.899923027	Sum of GTIs [s]
			l1events	1430373	Number of level 1 events

### 2.1.4 Events

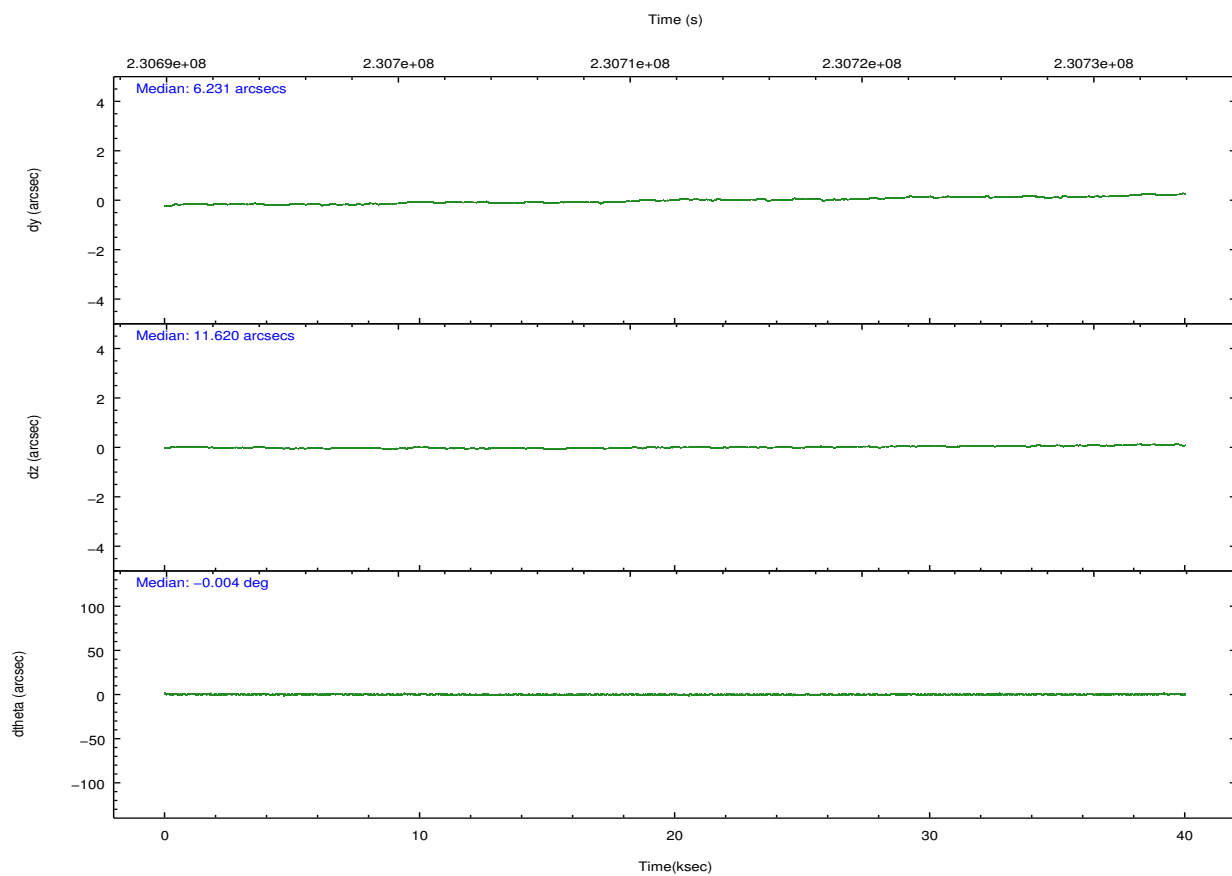
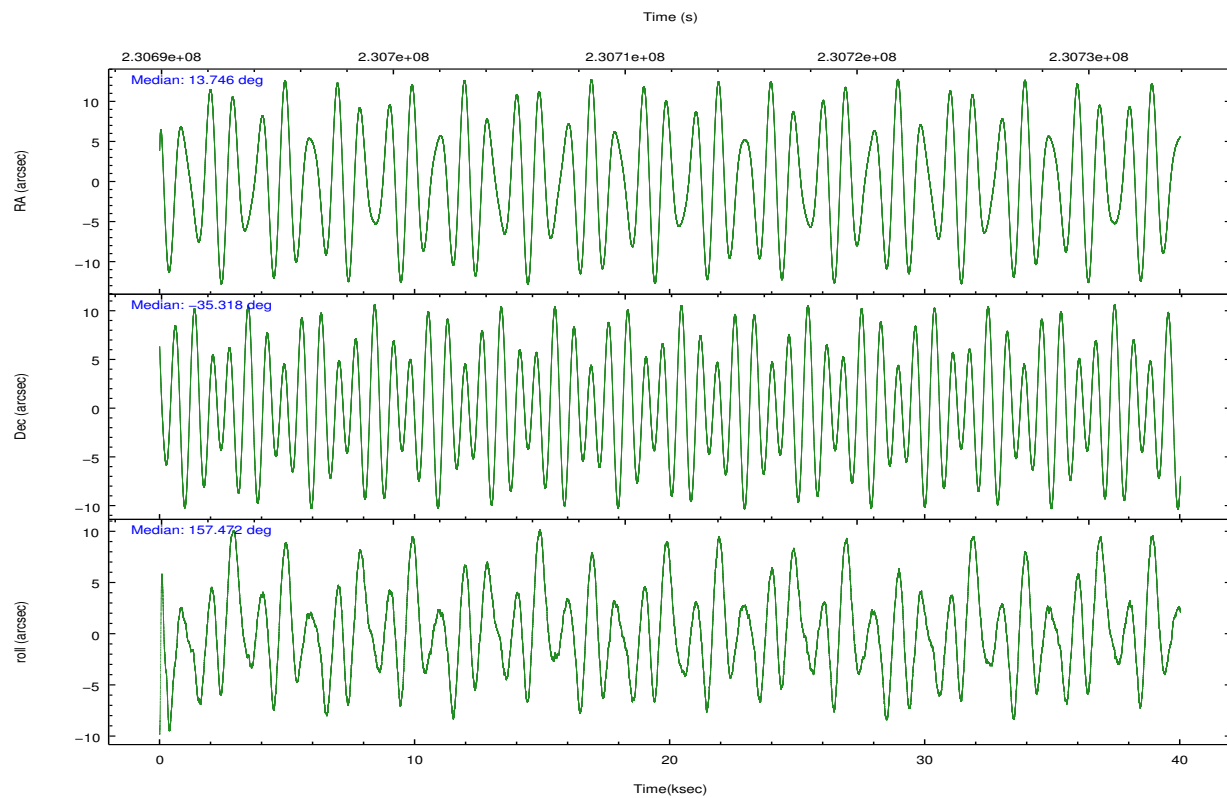
	ccd 2	ccd 3	ccd 5	ccd 6	ccd 7
level 1 events	264148	255185	353379	262039	295622
rejected events	239621	230969	177052	232305	157191
rejected %	90%	90%	50%	88%	53%

	ccd 2	ccd 3	ccd 5	ccd 6	ccd 7
grade 0 events	9193	8875	18401	12135	14592
	3%	3%	5%	4%	4%
grade 1 events	138	128	357	139	284
	0%	0%	0%	0%	0%
grade 2 events	5694	5211	53742	5989	28551
	2%	2%	15%	2%	9%
grade 3 events	2735	2788	8042	3179	13491
	1%	1%	2%	1%	4%
grade 4 events	2743	2727	7859	2994	13311
	1%	1%	2%	1%	4%
grade 5 events	8338	9870	28642	10364	30411
	3%	3%	8%	3%	10%
grade 6 events	4417	4858	90212	5752	69824
	1%	1%	25%	2%	23%
grade 7 events	230890	220728	146124	221487	125158
	87%	86%	41%	84%	42%

## 2.2 Compared Parameters

Parameter	Planned	Actual	Parameter	Planned	Actual
Instrument	ACIS	ACIS	Obspar format version number	7	7
Detector	ACIS-23567	ACIS-23567	Obspar file type	PREDICTED	ACTUAL
Grating	NONE	NONE	Obspar update status	NONE	UPDATED
Data mode	VFAINT	VFAINT	Number of optional ACIS chips dropped	0	0
Observation mode	POINTING	POINTING	On-chip summing requested	N	N
[deg] Pointing RA	13.778844	13.74580384242321	Subarray requested	NONE	NONE
[deg] Pointing Dec	-35.314379	-35.31830170601428	Alternating exposures requested	N	N
[deg] Pointing Roll	157.339741	157.477263417603	[s] Primary exposure time	0.000000	3.1
[mm] SIM focus pos	-0.684267	-0.6828225247311905			
[mm] SIM defocus	0	0.001444936568705701			
[mm] SIM translation stage pos	-190.132523	-190.1425803651734			
[mm] SIM translation stage offset	0	0.01005778216563158			
[s] Observation start time (MET)	230692109.184000	230690907.26672			
Observation start date	2005-04-24T01:07:25	2005-04-24T00:48:27			
[s] Observation end time (MET)	230731950.184000	230732174.7936			
Observation end date	2005-04-24T12:11:26	2005-04-24T12:16:14			
Read mode	TIMED	TIMED			

## 2.3 Aspect

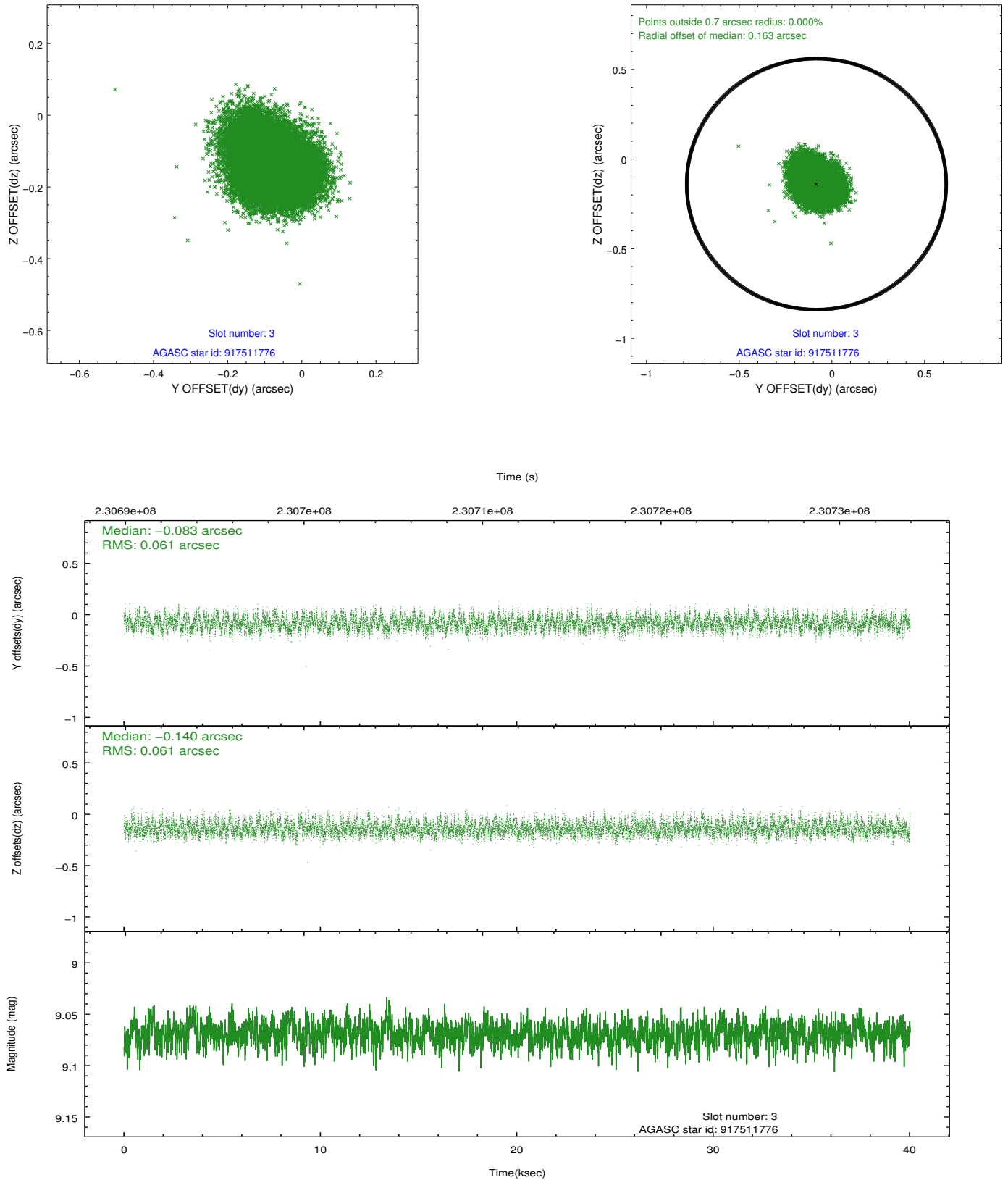


### Slot Statistics

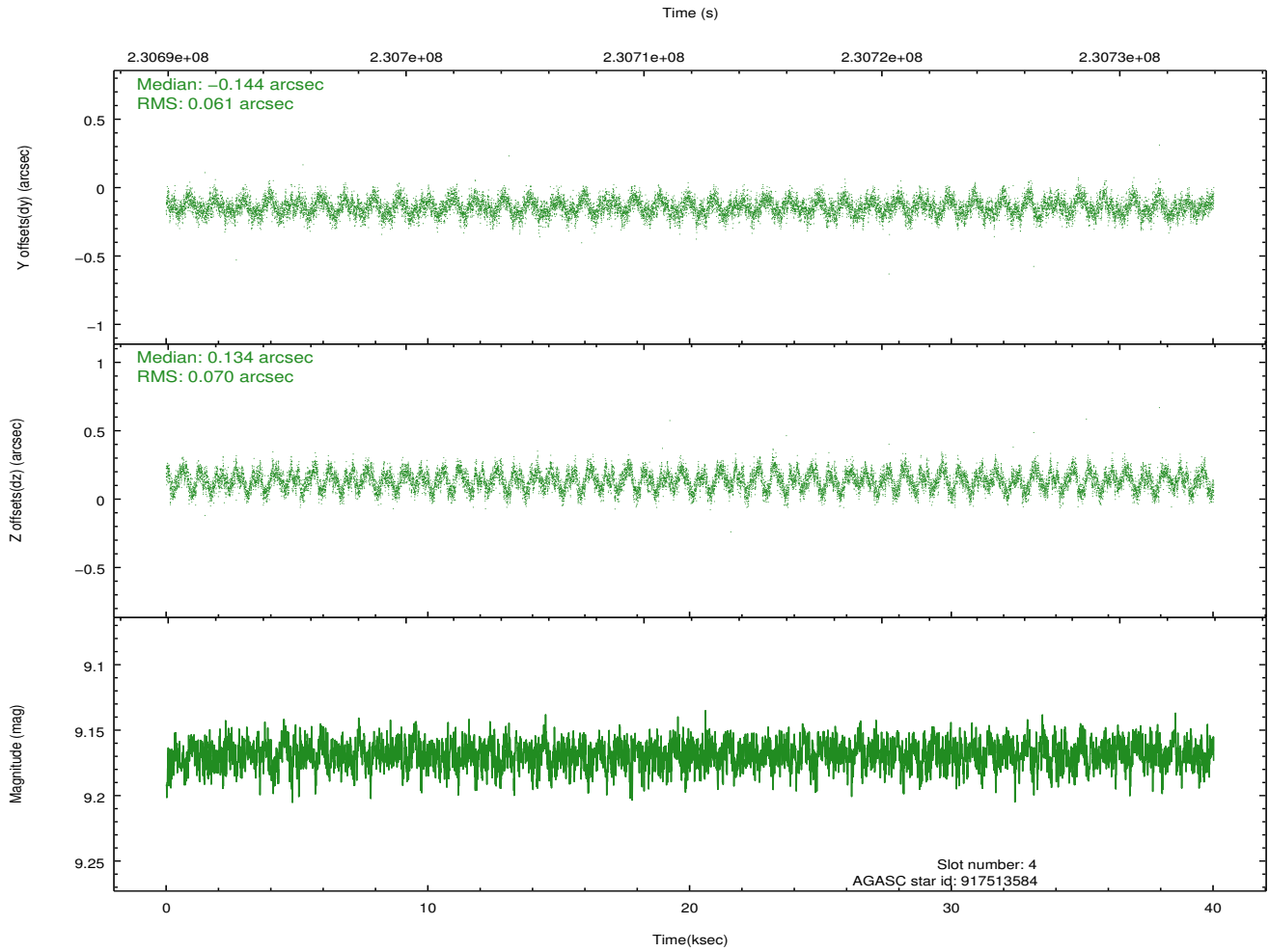
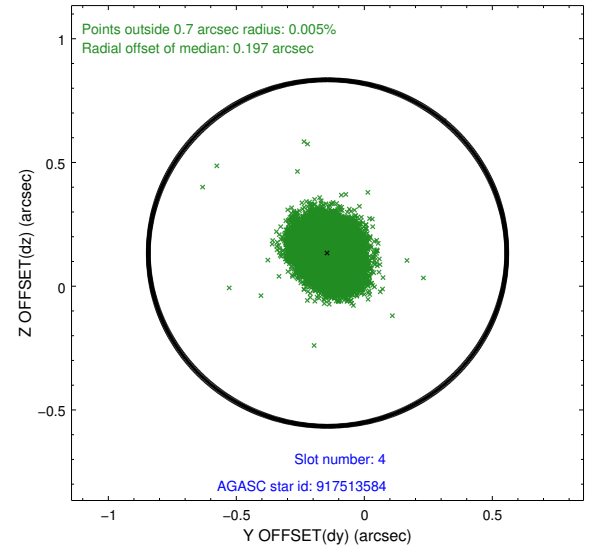
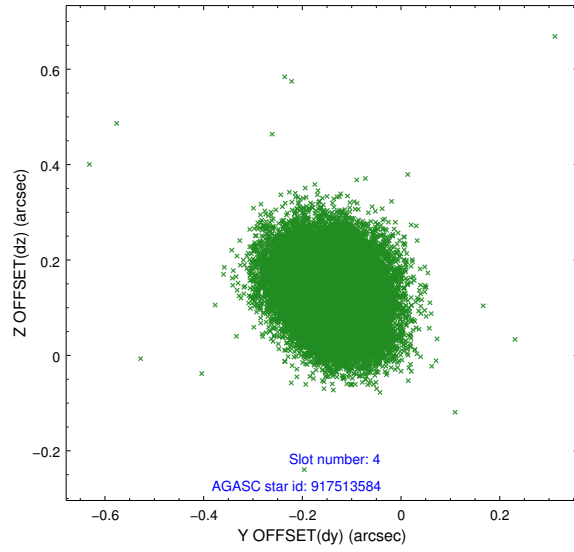
slot	status	id	mag	n_pts	med_dy	med_dz	dr1	dr2	ra	dec	mean_y	mean_z
0	FID	ACIS-S-2	7.10	9762	-0.052	-0.029	0.008	0.012	0.000000	0.000000	-759.00	-1732.90
1	FID	ACIS-S-4	7.20	9762	0.086	0.033	0.006	0.011	0.000000	0.000000	2154.40	175.64
2	FID	ACIS-S-5	7.23	9762	-0.066	0.005	0.007	0.012	0.000000	0.000000	-1811.84	169.29
3	GUIDE	917511776	9.07	19518	-0.083	-0.140	0.093	0.146	13.026153	-35.747726	1425.14	2294.69
4	GUIDE	917513584	9.17	19512	-0.144	0.134	0.101	0.155	13.354905	-34.852926	1795.00	-1047.35
5	GUIDE	917650320	9.37	19437	0.116	0.021	0.090	0.145	14.082606	-35.612459	-1234.08	648.81
6	GUIDE	917650472	9.44	19503	0.008	-0.077	0.154	0.225	13.602395	-35.400969	357.47	487.44
7	GUIDE	917650648	9.61	19507	0.100	0.063	0.106	0.170	14.085711	-35.147676	-602.53	-900.53

## 2.4 Star Slots

### 2.4.1 Slot 3

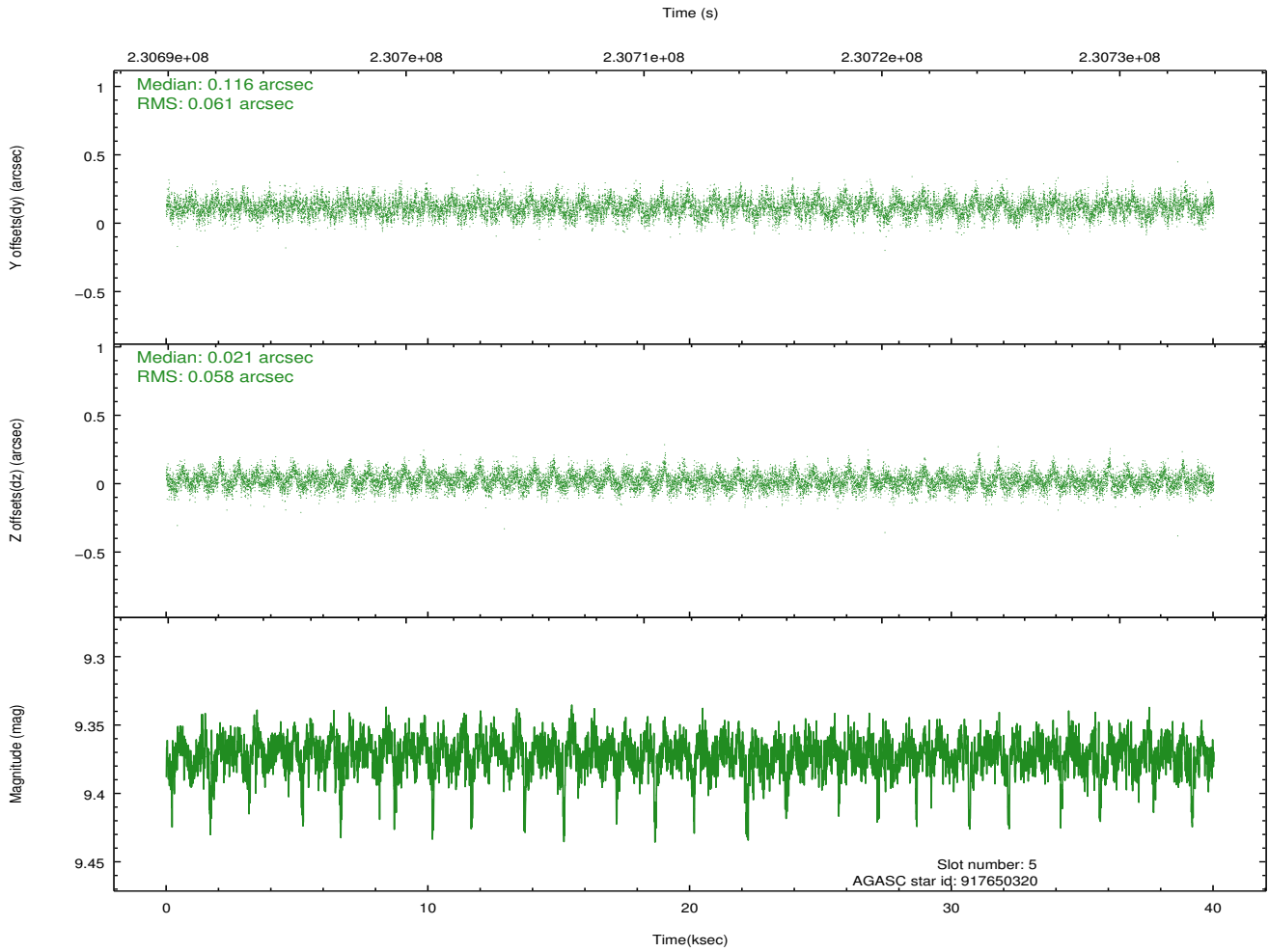
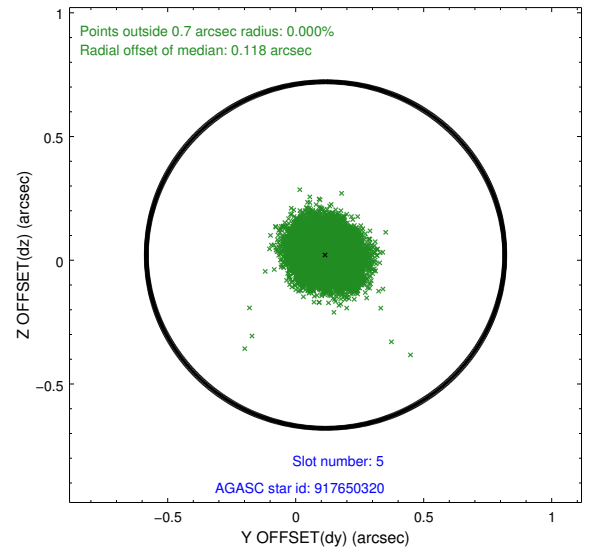
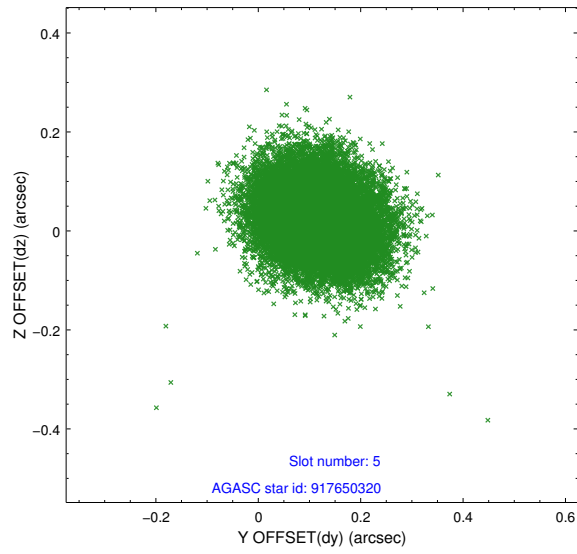


## 2.4.2 Slot 4

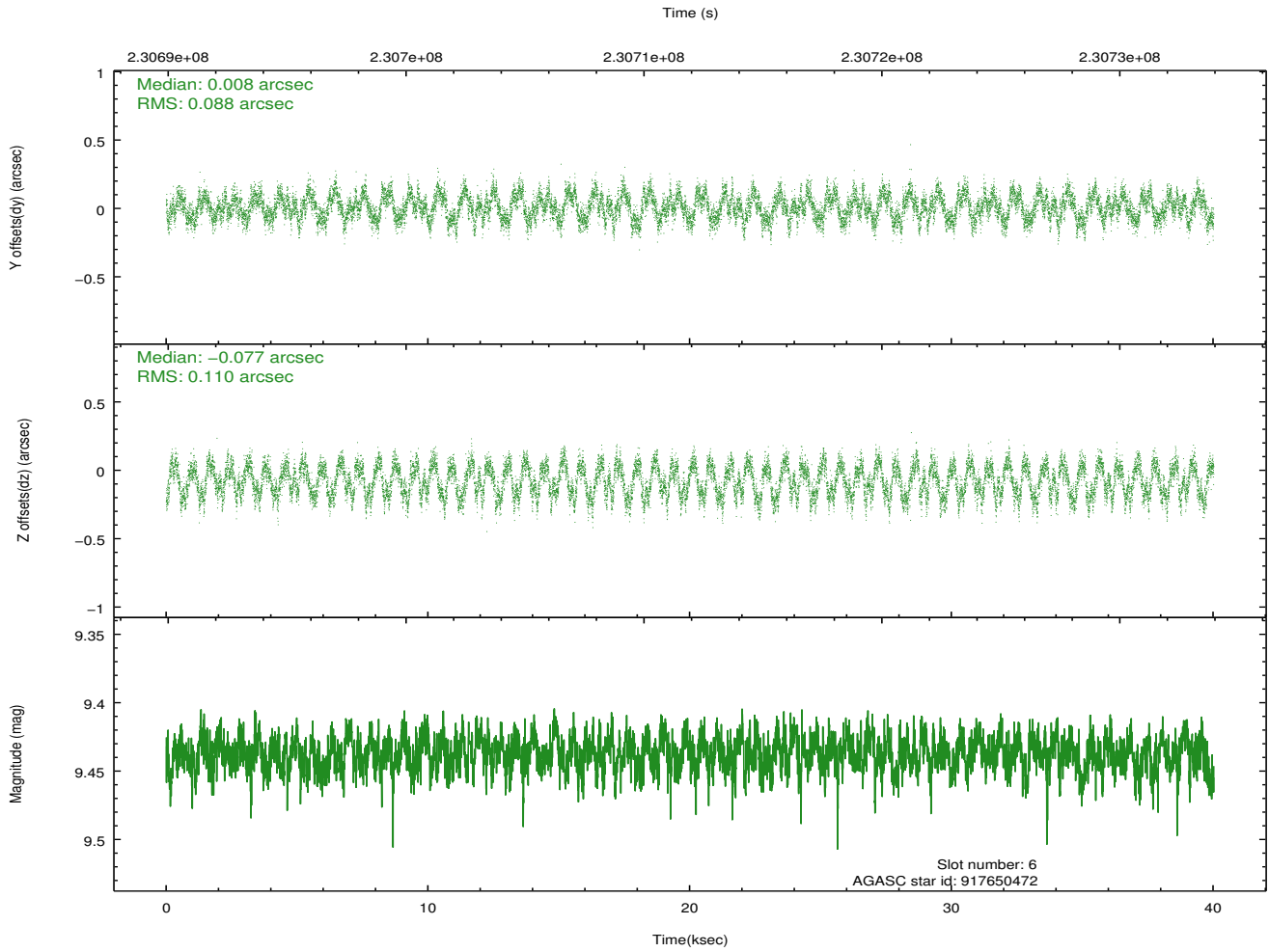
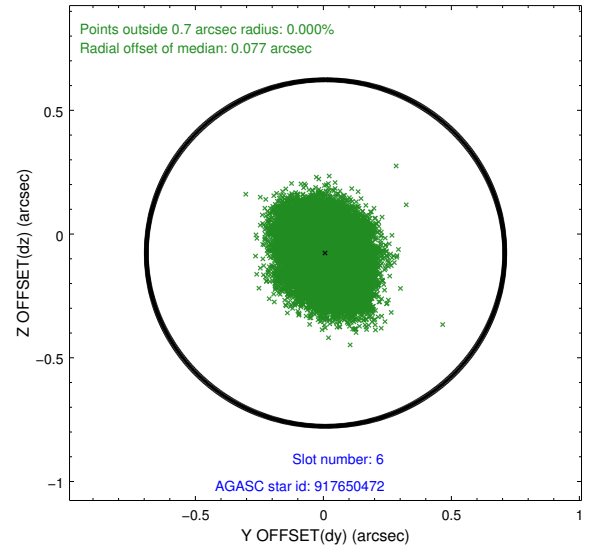
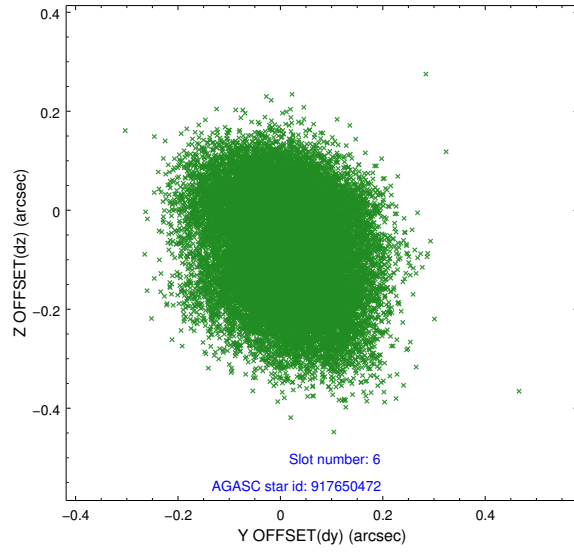




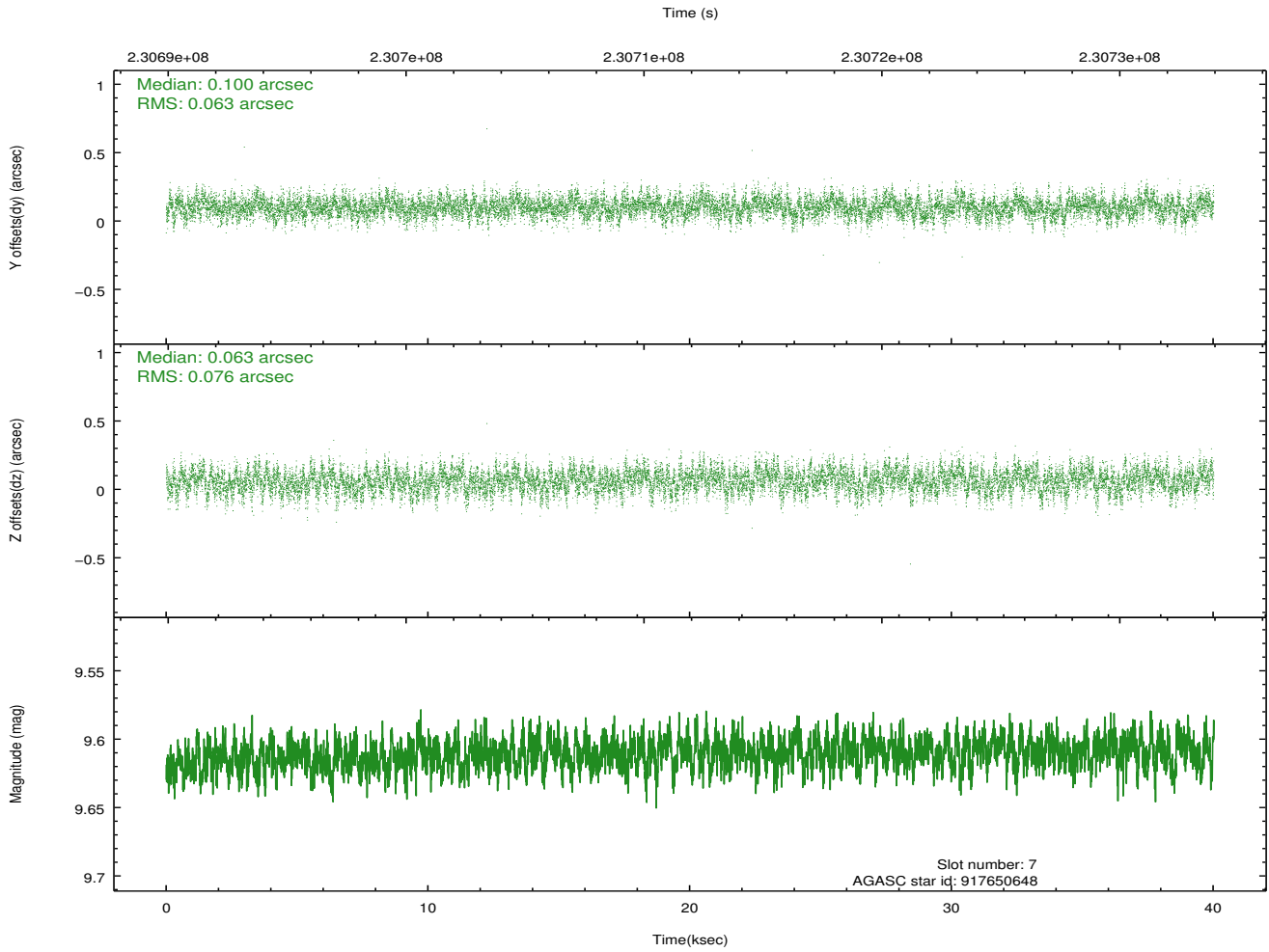
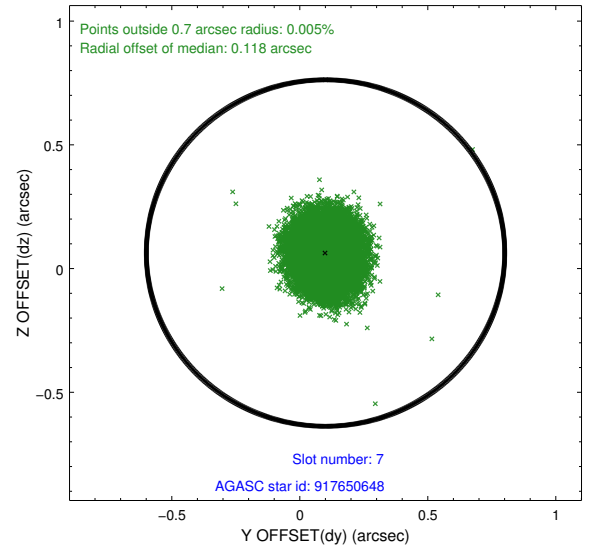
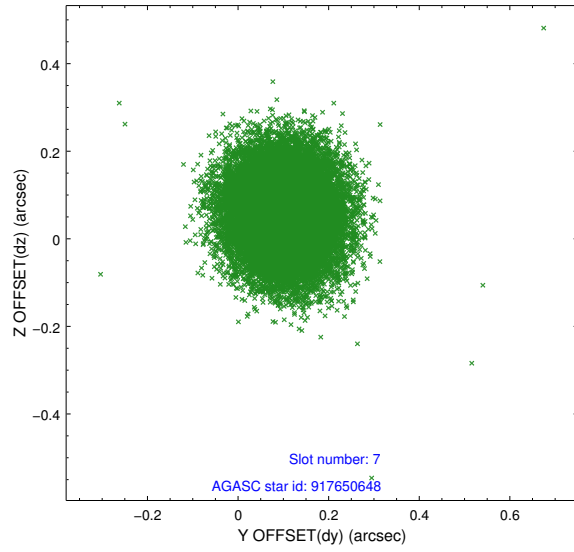
### 2.4.3 Slot 5



## 2.4.4 Slot 6

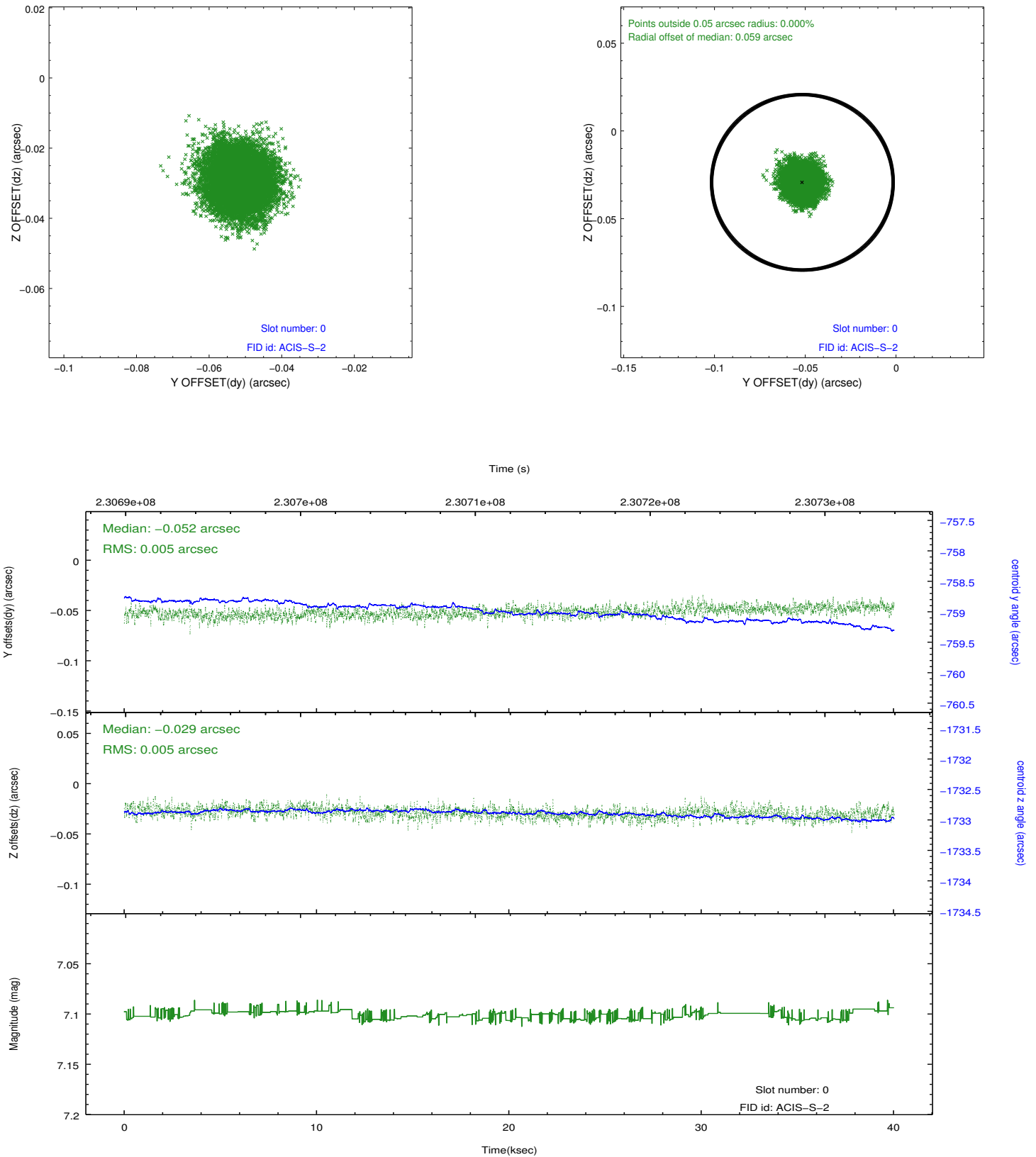


## 2.4.5 Slot 7

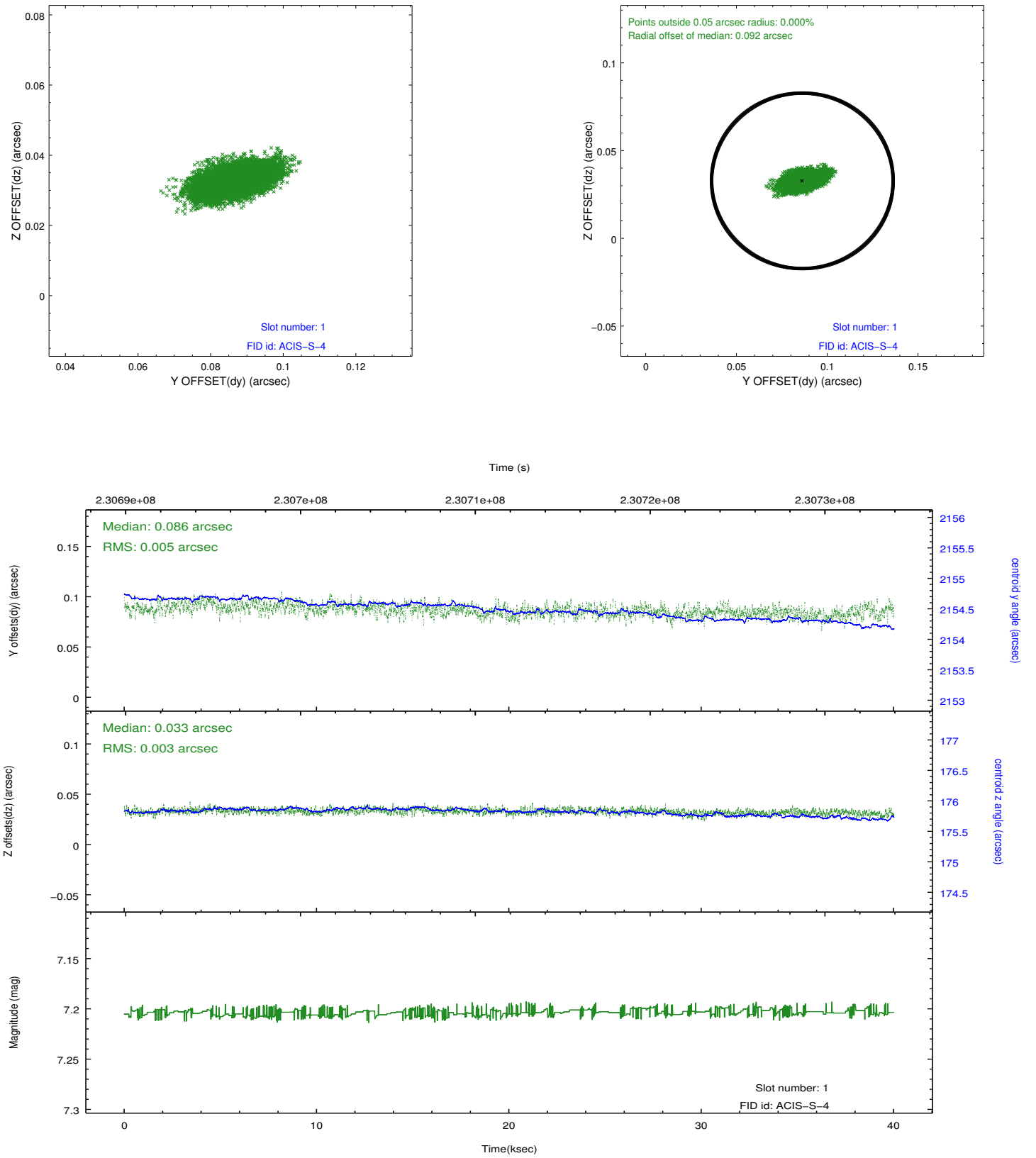


## 2.5 FID Slots

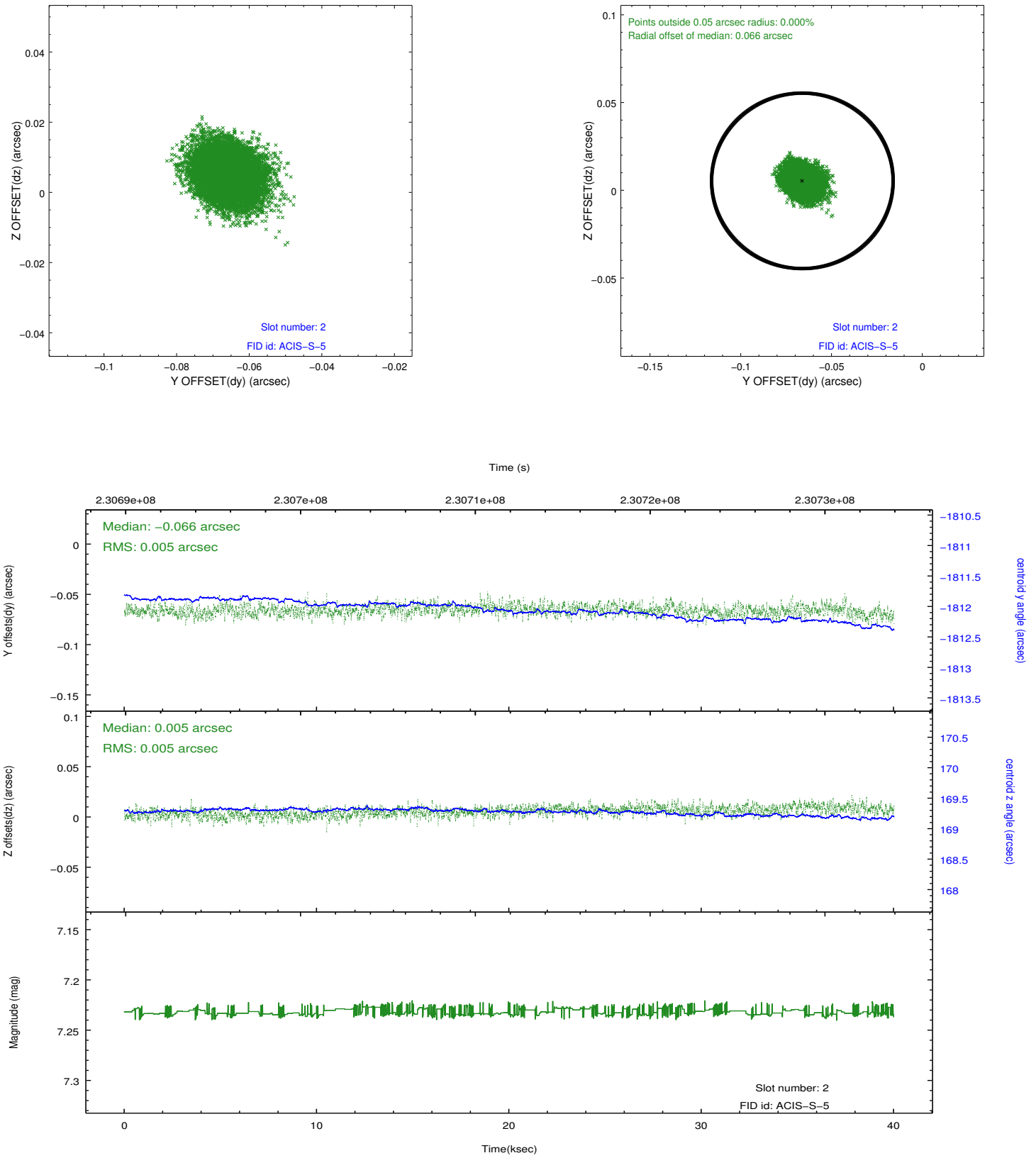
### 2.5.1 Slot 0



## 2.5.2 Slot 1



### 2.5.3 Slot 2



## A Summary

### A.1 Status

V&V Scientist	Beth Sundheim
V&V Date (YYYY-MM-DD)	2013.01.15
V&V Edition	1
V&V Disposition and Status	OK
V&V Charge Time	40.01789

### A.2 Comments