

V&V Reference Report

L2 ASCDS Version : 7.6.7

Observation 5784 - L2 Version 002
Chandra X-Ray Center

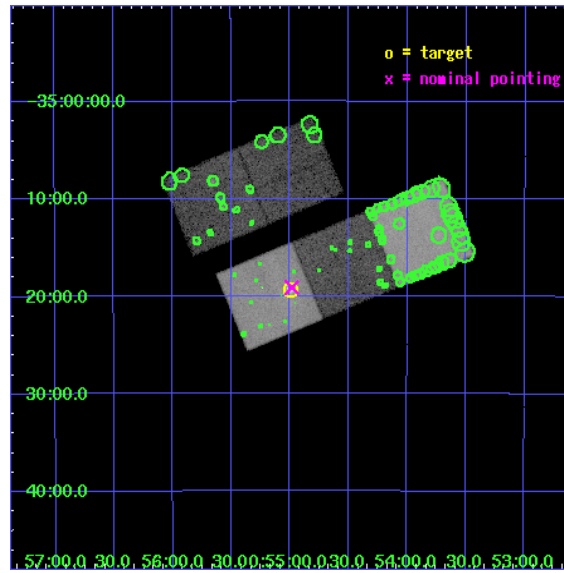
L2 Processing Date: Mar 2 2006

Contents

1	Front	2
2	OBI	3
2.1	OBI	3
2.1.1	Images	3
2.1.2	Bias	3
2.1.3	Parameters	4
2.1.4	Events	4
2.2	Compared Parameters	5
2.3	Aspect	6
2.4	Star Slots	9
2.4.1	Slot 3	9
2.4.2	Slot 4	10
2.4.3	Slot 5	11
2.4.4	Slot 6	12
2.4.5	Slot 7	13
2.5	FID Slots	14
2.5.1	Slot 0	14
2.5.2	Slot 1	15
2.5.3	Slot 2	16
3	Point Sources	17
A	Summary	18
A.1	Status	18
A.2	Comments	18

1 Front

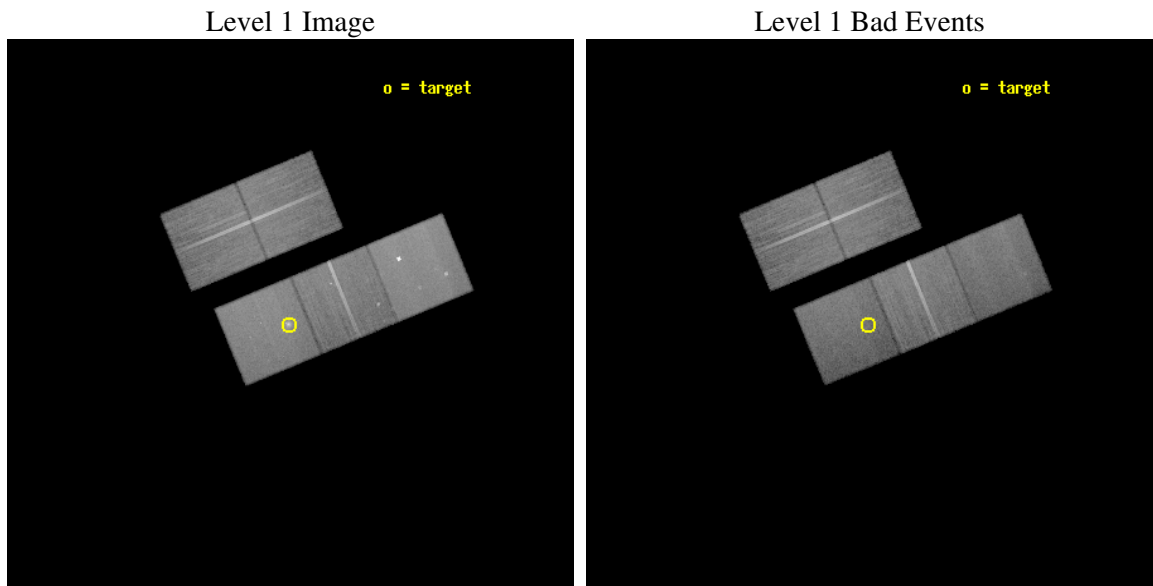
seq_num	800497
obs_id	5784
title	Fossil groups in the local Universe
observer	Dr Alastair Sanderson
object	ESO 351-021
dtcycle	0
cycle	P
ra_targ	13.749583
dec_targ	-35.321389
ra_nom	13.745835288694
dec_nom	-35.318312399722
roll_nom	157.47728154489
revision	2
ontime	40017.899923056
livetime	39495.036599812
ontime2	40014.758952796
ontime3	40005.336042136
ontime5	40017.899923056
ontime6	40014.758932889
ontime7	40017.899923056
l2events	347456



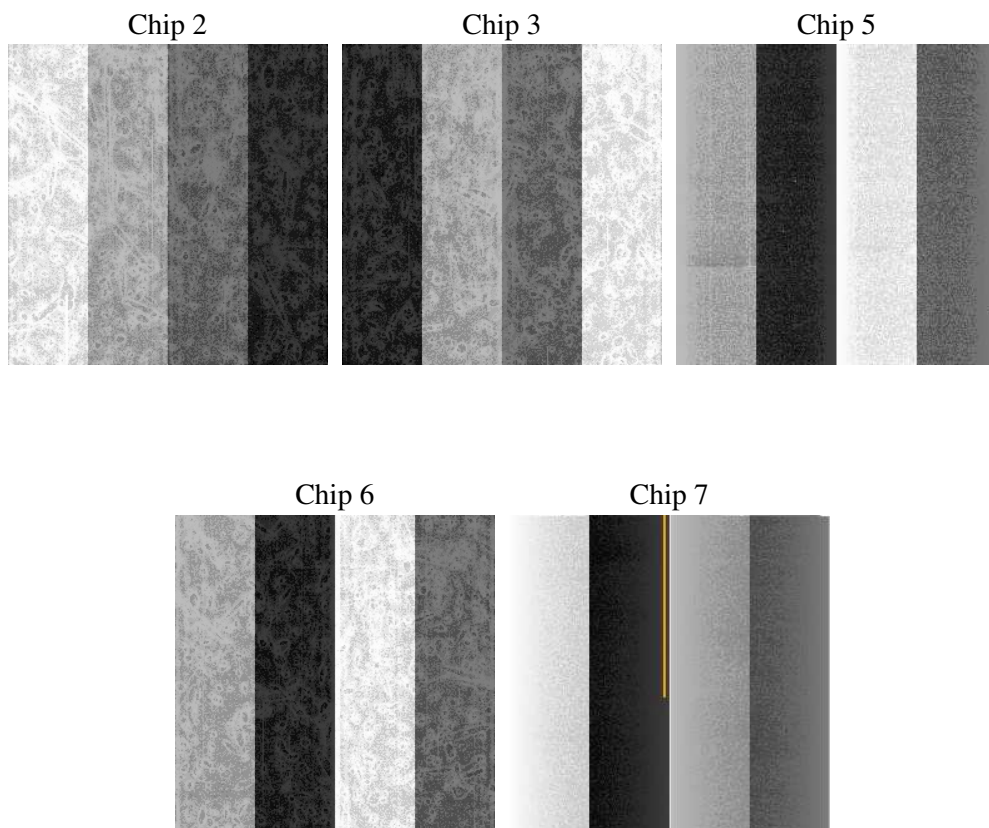
2 OBI

2.1 OBI

2.1.1 Images



2.1.2 Bias



2.1.3 Parameters

obi_num	1
ascdsver	7.6.7
caldbver	3.2.1
date	2006-03-02T06:43:01
revision	2

sched_exp_time	39841.864000
ontime	40430.969609469
ontime2	40430.969629377
ontime3	40421.546718717
ontime5	40434.110619545
ontime6	40430.969629377
ontime7	40430.969609469
l1events	1430373

2.1.4 Events

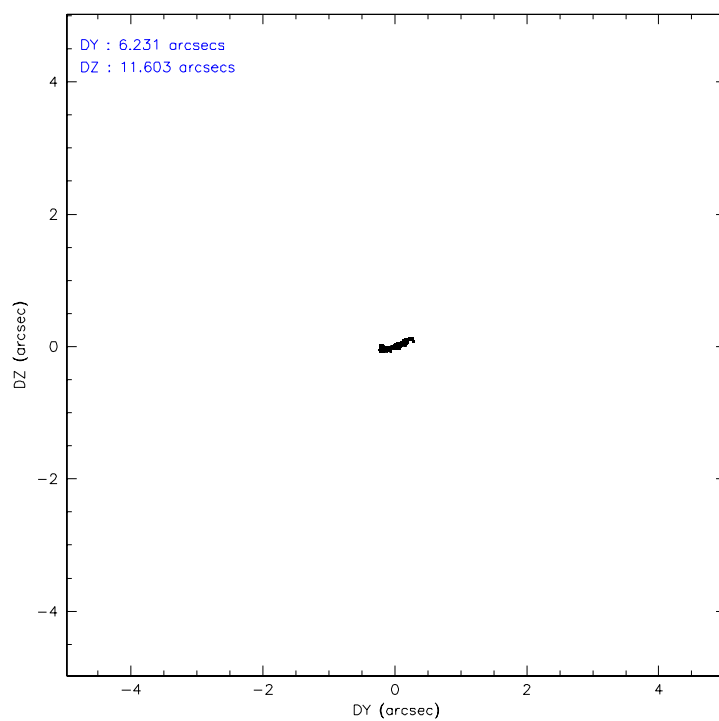
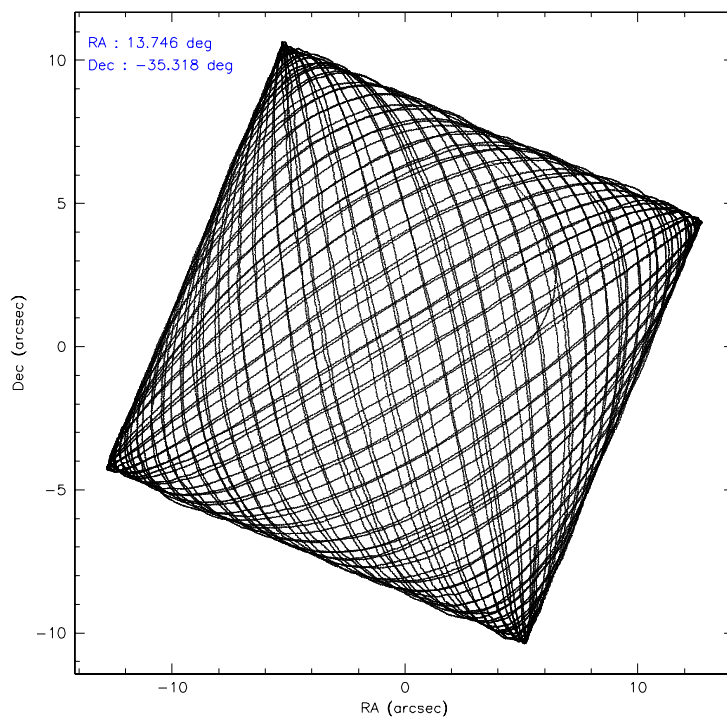
	ccd 2	ccd 3	ccd 5	ccd 6	ccd 7
level 1 events	264148	255185	353379	262039	295622
rejected events	239618	230969	183124	232301	166969
rejected %	90%	90%	51%	88%	56%

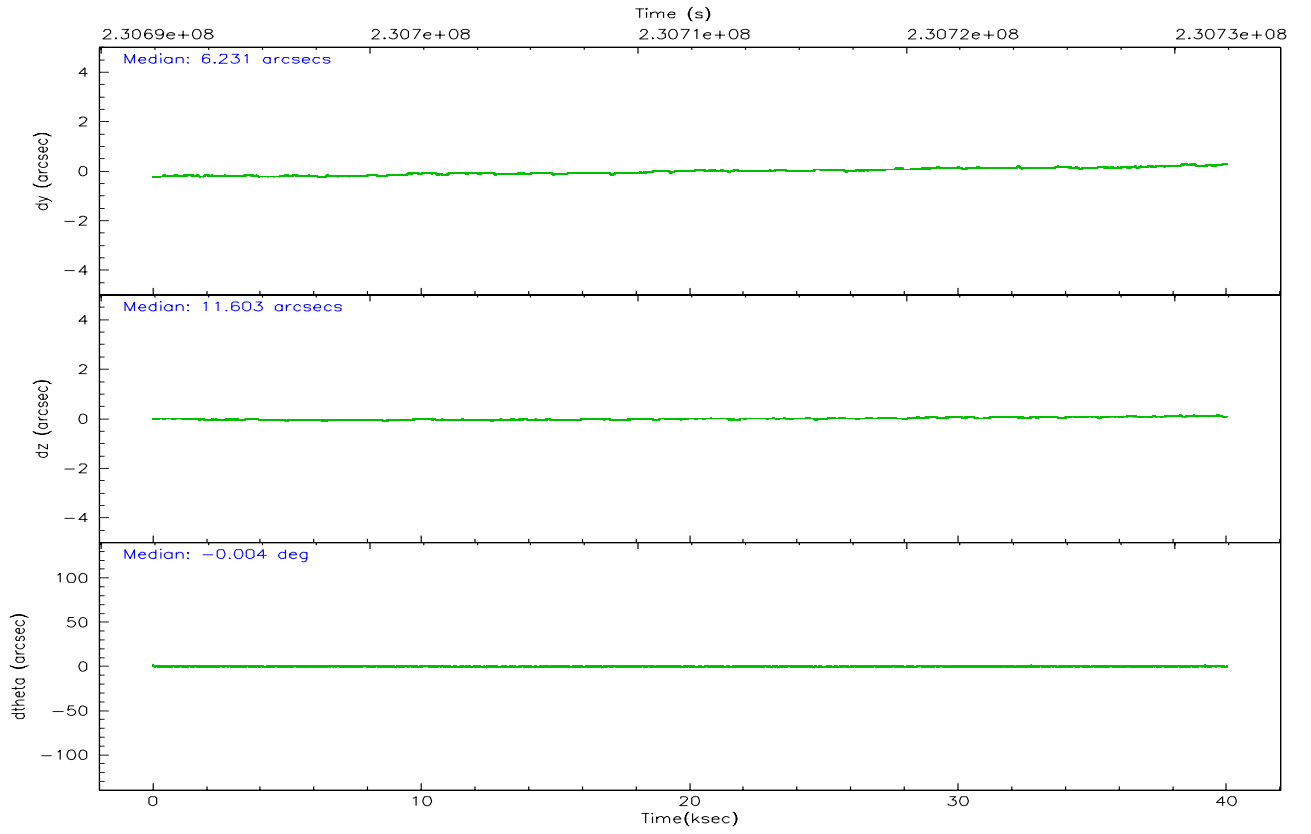
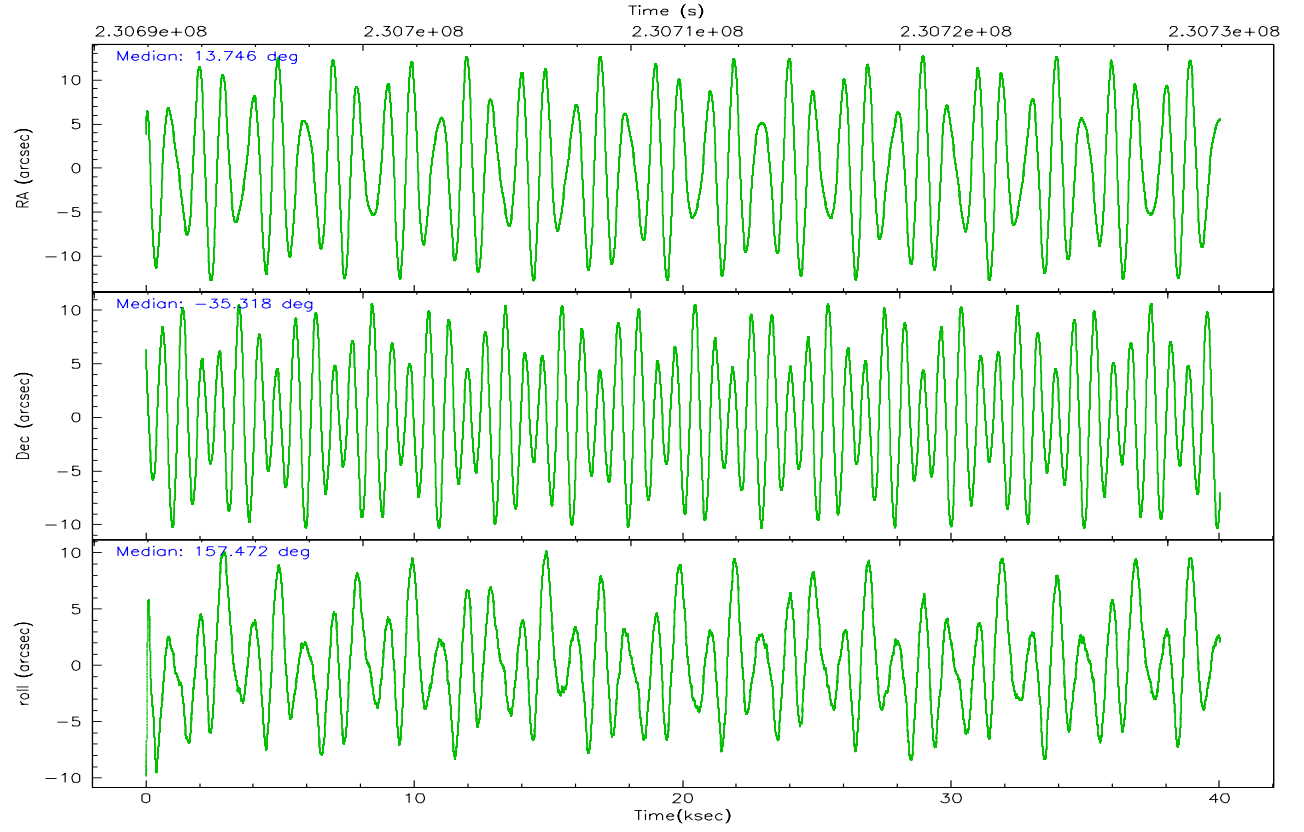
	ccd 2	ccd 3	ccd 5	ccd 6	ccd 7
grade 0 events	9193	8875	13416	12135	9860
	3%	3%	3%	4%	3%
grade 1 events	138	128	186	139	175
	0%	0%	0%	0%	0%
grade 2 events	5694	5211	55615	5989	32344
	2%	2%	15%	2%	10%
grade 3 events	2735	2788	4387	3179	8063
	1%	1%	1%	1%	2%
grade 4 events	2743	2727	4287	2994	7873
	1%	1%	1%	1%	2%
grade 5 events	8338	9870	18806	10364	21732
	3%	3%	5%	3%	7%
grade 6 events	4417	4858	94415	5752	71765
	1%	1%	26%	2%	24%
grade 7 events	230890	220728	162267	221487	143810
	87%	86%	45%	84%	48%

2.2 Compared Parameters

Parameter	Planned	Actual	Parameter	Planned	Actual
Instrument	ACIS	ACIS	Obspar format version number	6	6
Detector	ACIS-23567	ACIS-23567	Obspar file type	PREDICTED	ACTUAL
Grating	NONE	NONE	Obspar update status	NONE	UPDATED
Data mode	VFAINT	VFAINT	On-chip summing requested	N	N
Observation mode	POINTING	POINTING	Subarray requested	NONE	NONE
Pointing RA	13.778844	13.74583528869447	Alternating exposures requested	N	N
Pointing Dec	-35.314379	-35.31831239972209	Primary exposure time	0.000000	3.1
Pointing Roll	157.339741	157.4772815448896			
SIM focus pos (mm)	-0.684267	-0.6828225247311905			
SIM defocus (mm)	0	0.001444936568705701			
SIM translation stage pos (mm)	-190.132523	-190.1425803651734			
SIM translation stage offset (mm)	0	0.01005778216563158			
Observation start time	230692109.184000	230690907.26672			
Observation start date	2005-04-24T01:07:25	2005-04-24T00:48:27			
Observation end time	230731950.184000	230732174.7936			
Observation end date	2005-04-24T12:11:26	2005-04-24T12:16:14			
Read mode	TIMED	TIMED			

2.3 Aspect



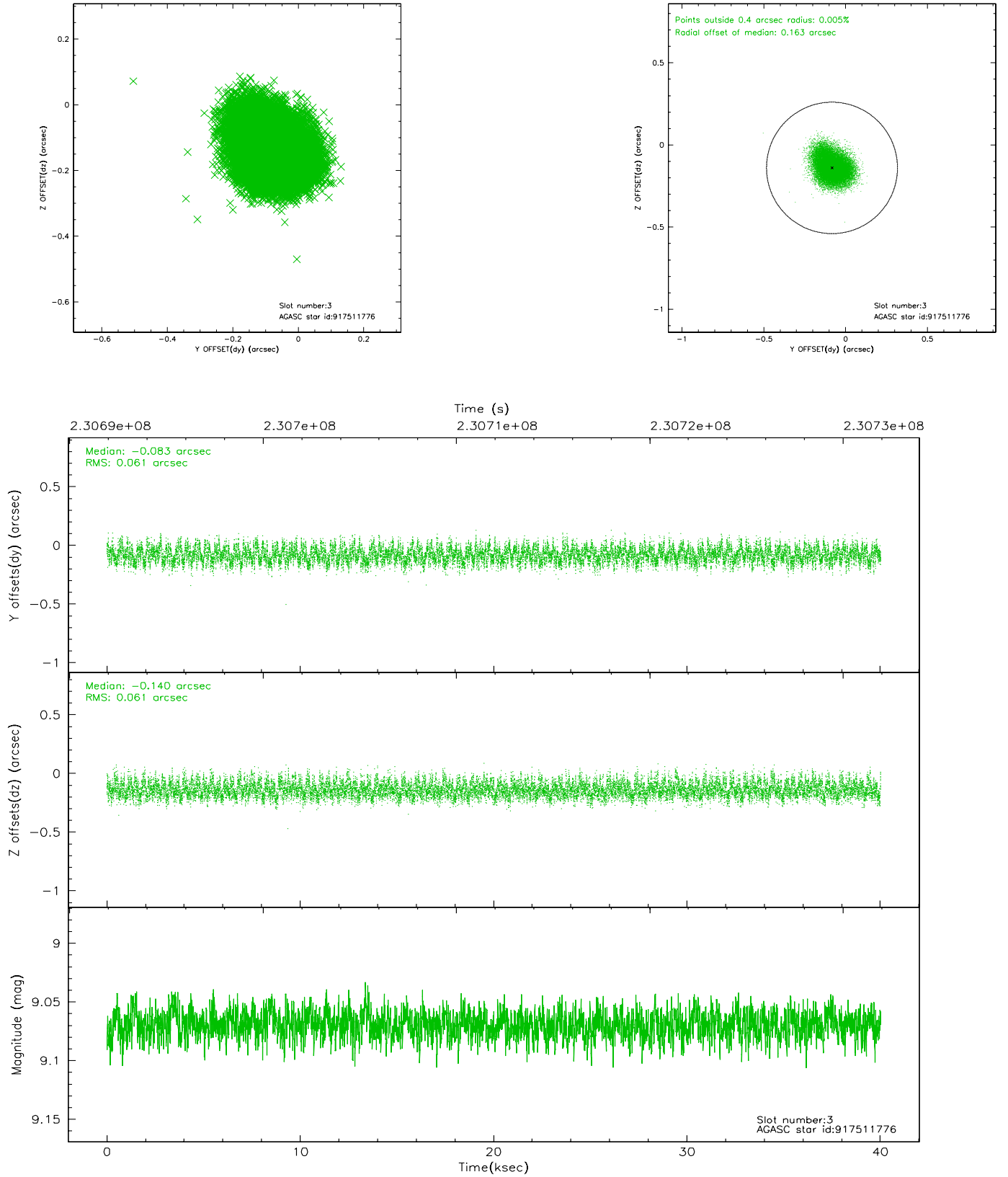


Slot Statistics

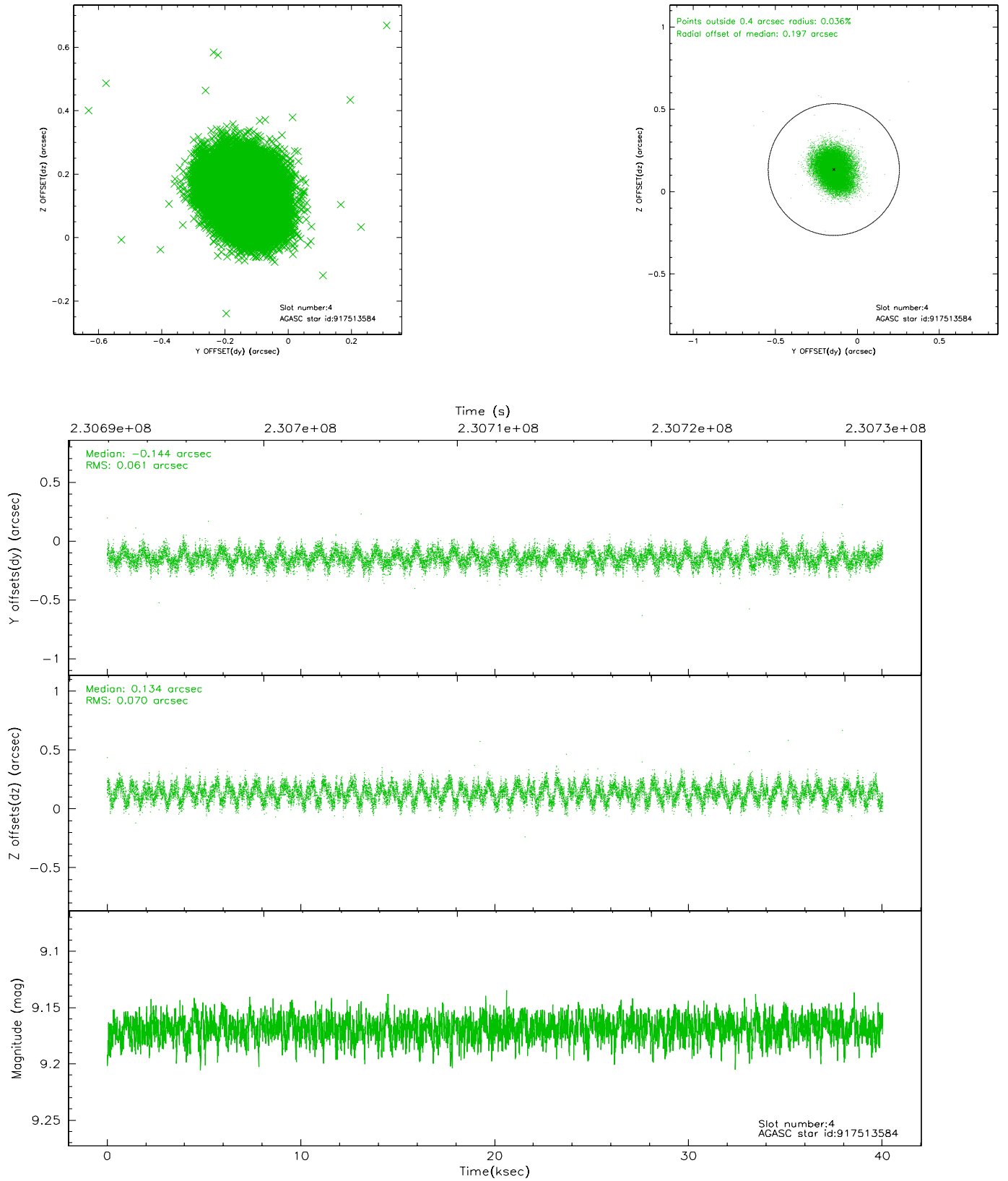
slot	status	id	mag	n_pts	med_dy	med_dz	dr1	dr2	ra	dec	mean_y	mean_z
0	FID	ACIS-S-2	7.10	9762	-0.040	-0.006	0.007	0.012	0.000000	0.000000	-758.99	-1732.86
1	FID	ACIS-S-4	7.20	9762	0.044	0.021	0.006	0.010	0.000000	0.000000	2154.36	175.64
2	FID	ACIS-S-5	7.23	9762	-0.035	-0.006	0.007	0.011	0.000000	0.000000	-1811.81	169.30
3	GUIDE	917511776	9.07	19518	-0.083	-0.140	0.093	0.146	13.026153	-35.747726	1425.14	2294.69
4	GUIDE	917513584	9.17	19512	-0.144	0.134	0.101	0.155	13.354905	-34.852926	1795.00	-1047.35
5	GUIDE	917650320	9.37	19437	0.116	0.021	0.090	0.145	14.082606	-35.612459	-1234.08	648.81
6	GUIDE	917650472	9.44	19503	0.008	-0.077	0.154	0.225	13.602395	-35.400969	357.47	487.44
7	GUIDE	917650648	9.61	19507	0.100	0.063	0.106	0.170	14.085711	-35.147676	-602.53	-900.53

2.4 Star Slots

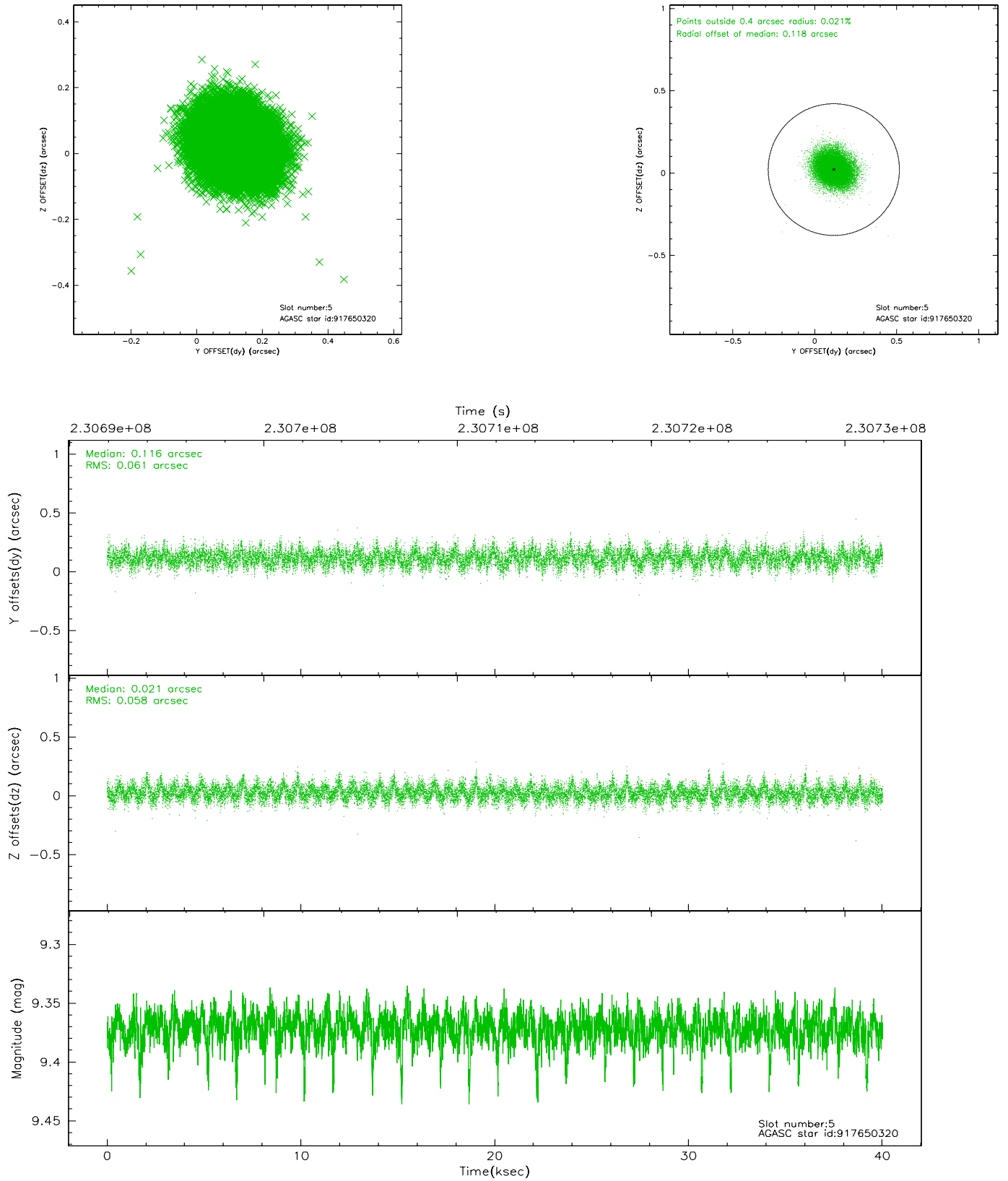
2.4.1 Slot 3



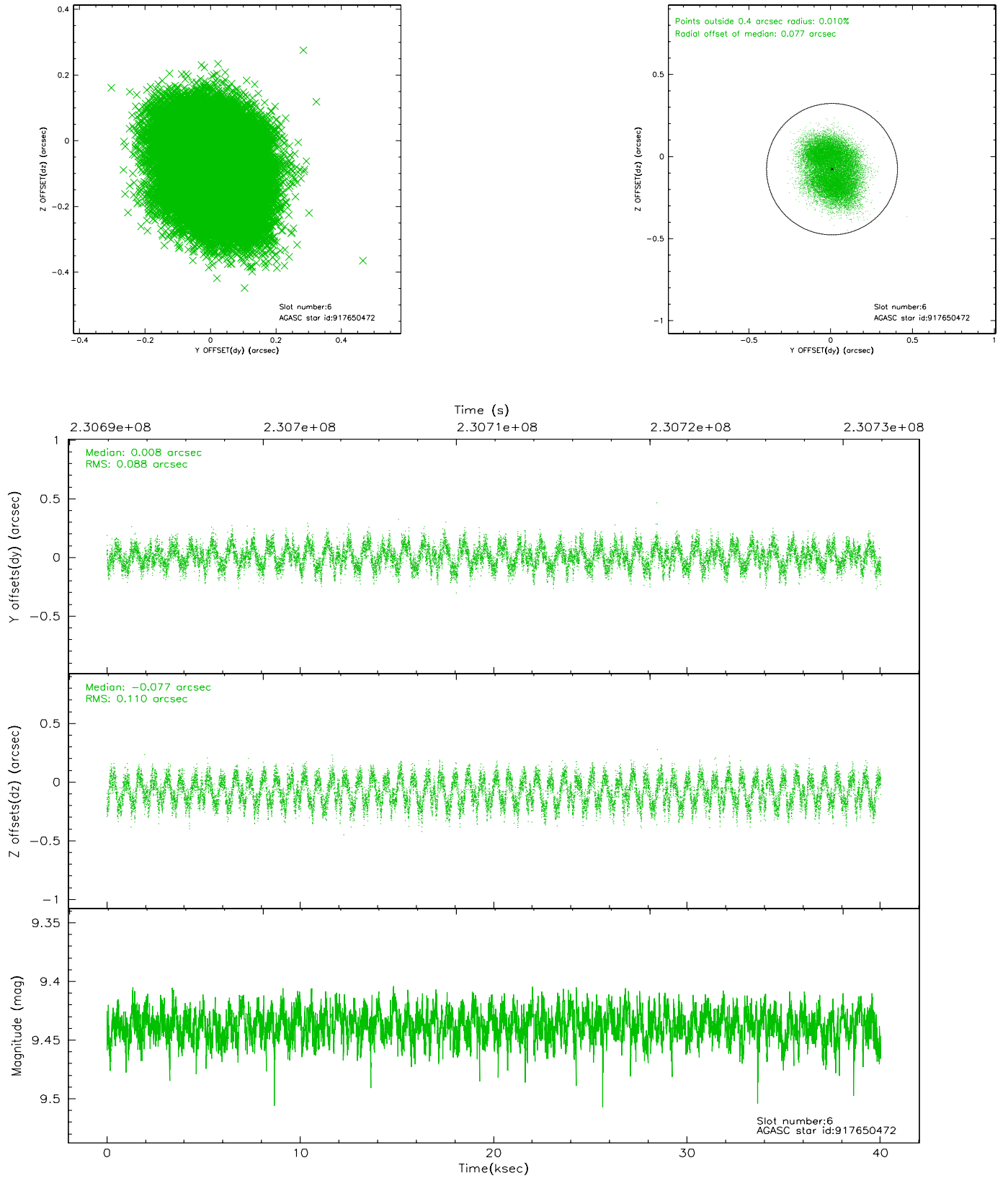
2.4.2 Slot 4



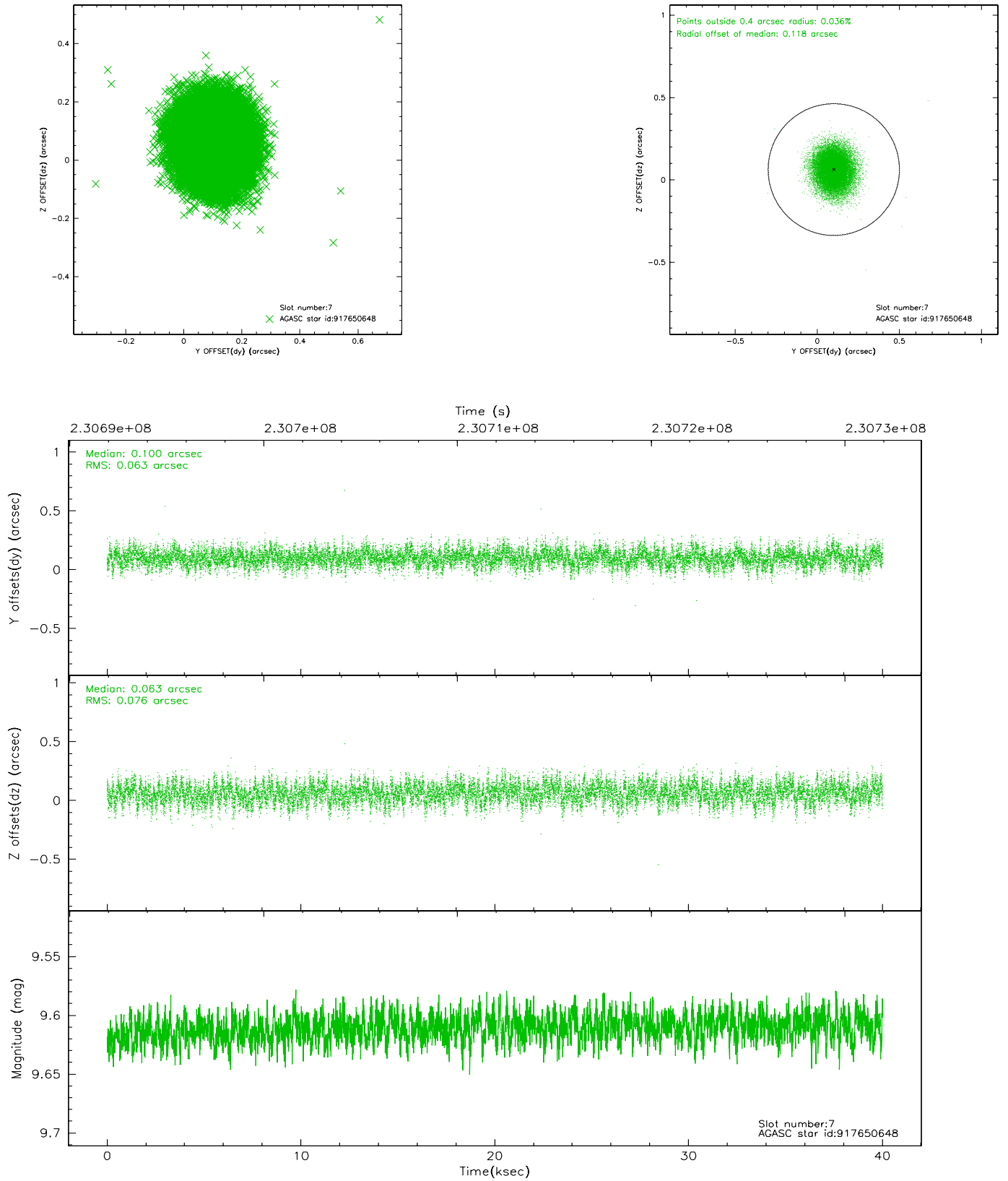
2.4.3 Slot 5



2.4.4 Slot 6

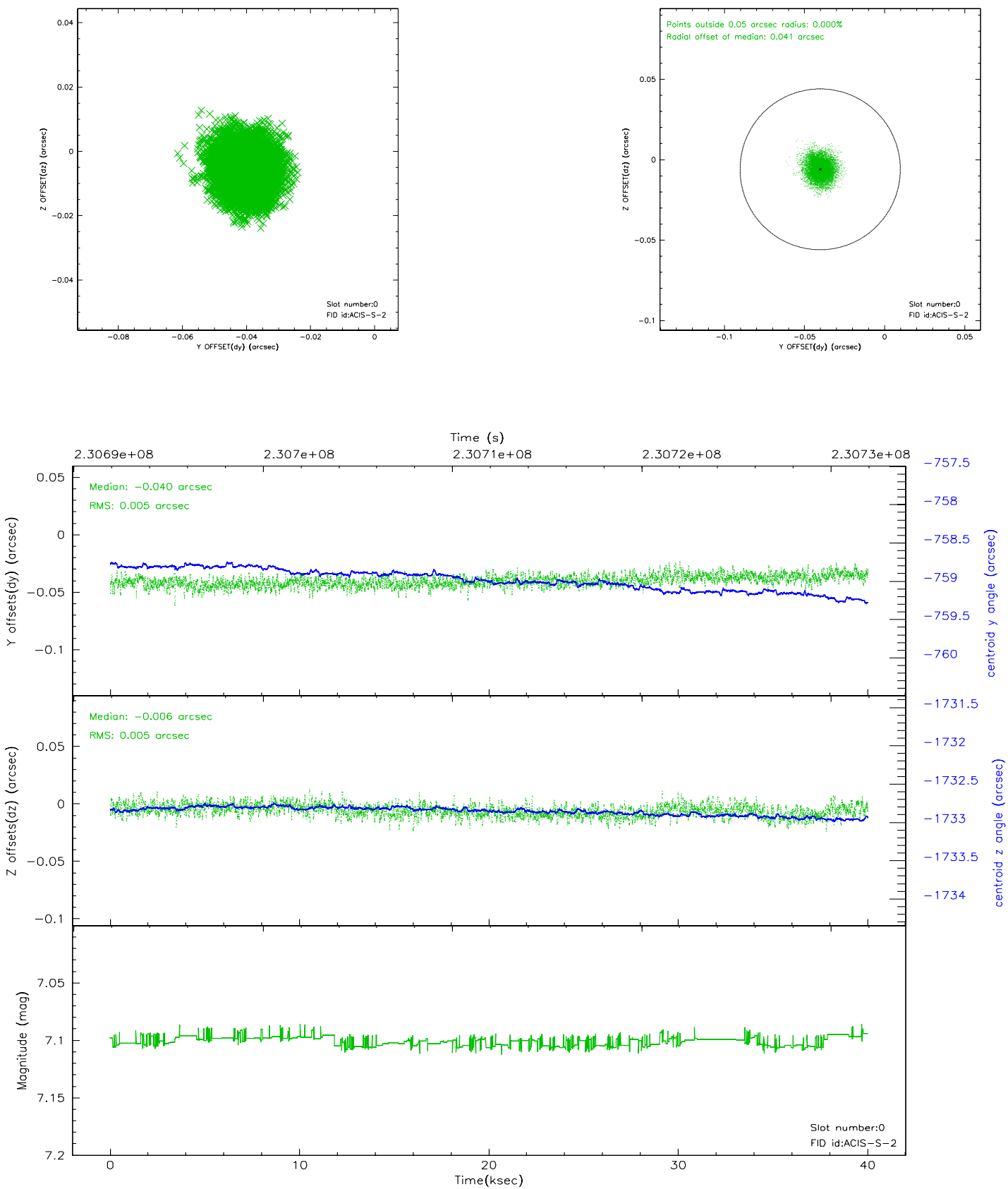


2.4.5 Slot 7

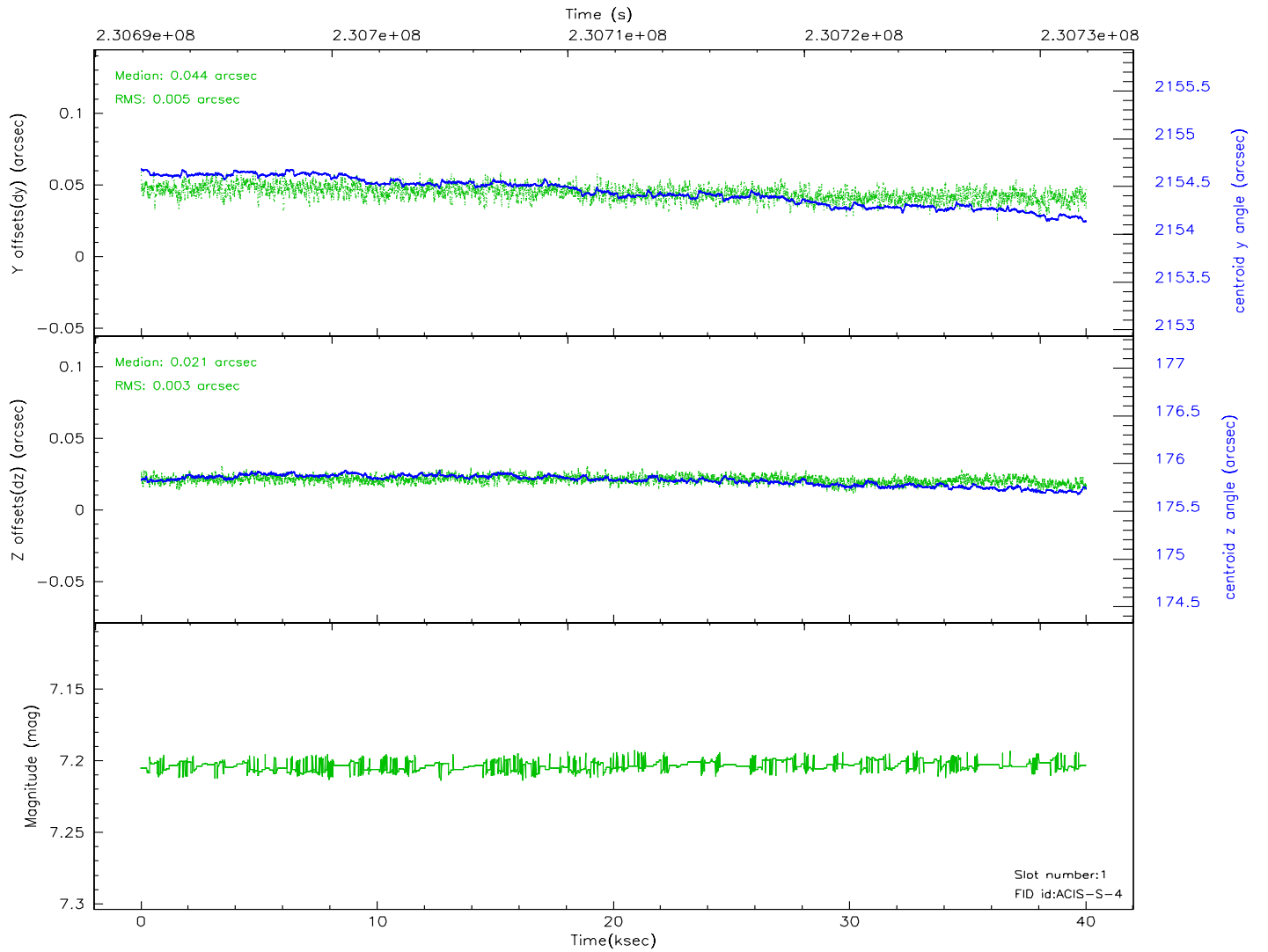
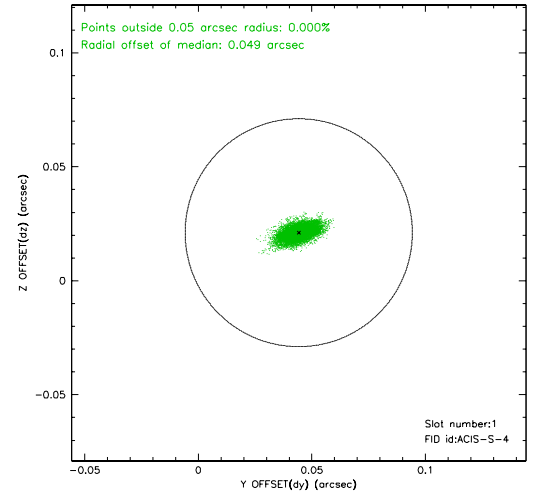
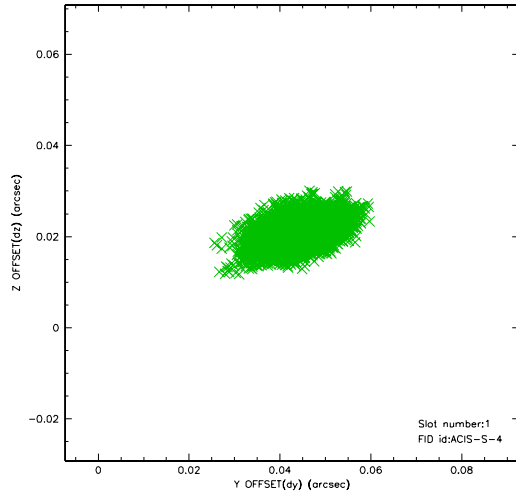


2.5 FID Slots

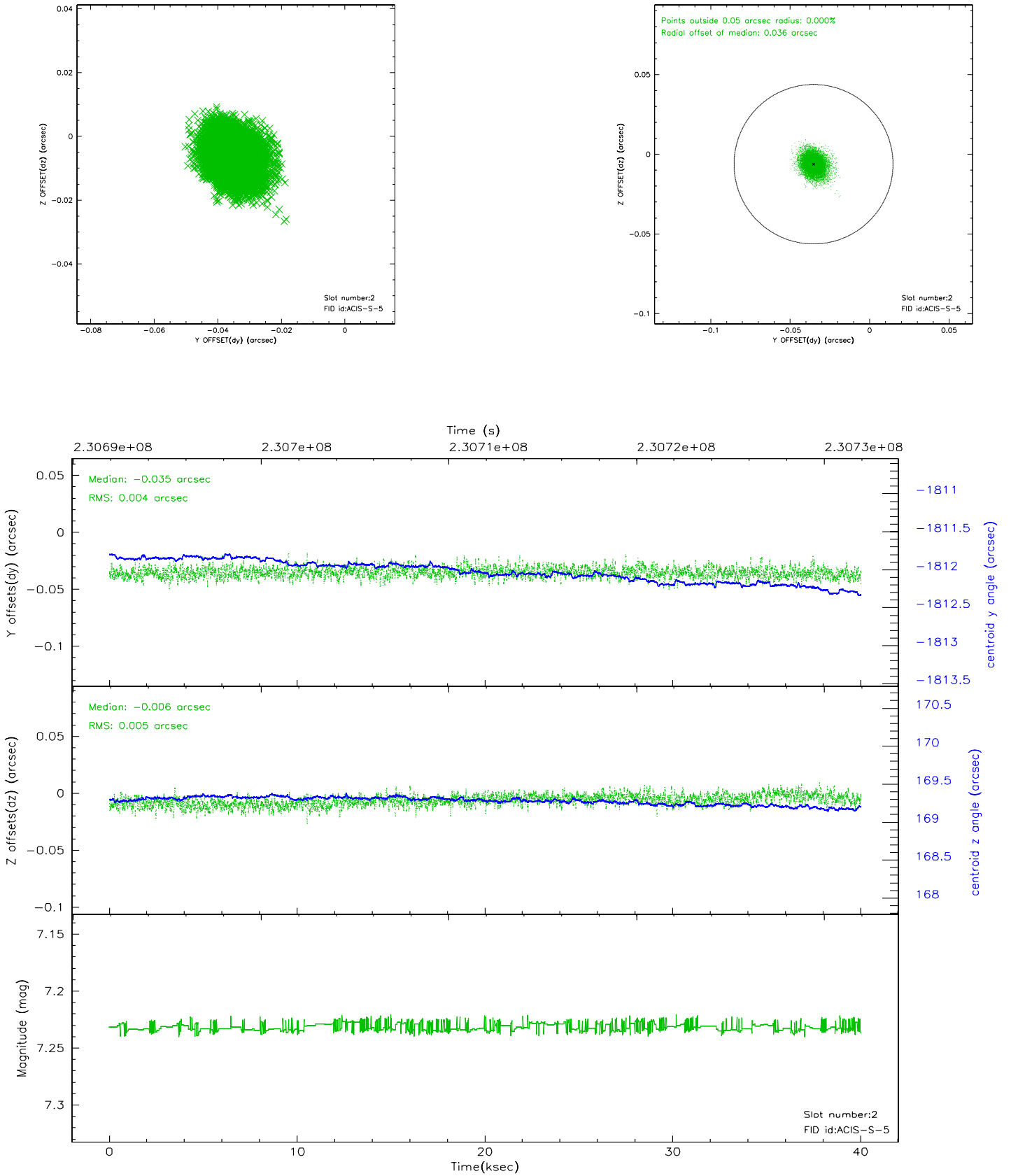
2.5.1 Slot 0



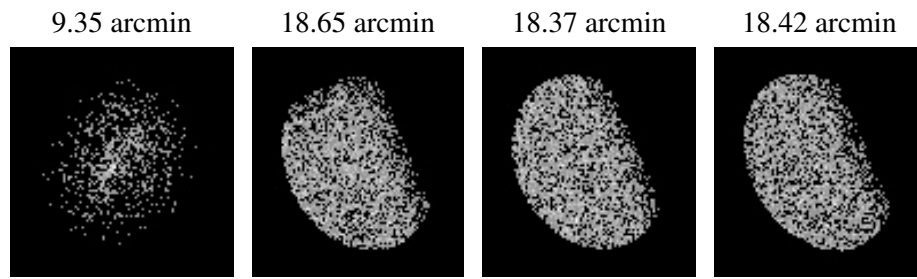
2.5.2 Slot 1



2.5.3 Slot 2



3 Point Sources



A Summary

A.1 Status

V&V Scientist	Jen Lauer
V&V Date (YYYY-MM-DD)	2006.03.02
V&V Edition	1
V&V Disposition and Status	OK
V&V Charge Time	40.01789

A.2 Comments