

V&V Reference Report

L2 ASCDS Version : 8.4.4

Observation 57834 - L2 Version 3
Chandra X-Ray Center

L2 Processing Date : May 13 2012

Contents

1	Front	2
2	OBI	3
2.1	OBI	3
2.1.1	Images	3
2.1.2	Bias	3
2.1.3	Parameters	4
2.1.4	Events	4
2.2	Compared Parameters	5
2.3	Star Slots	6
2.4	FID Slots	6
A	Summary	7
A.1	Status	7
A.2	Comments	7

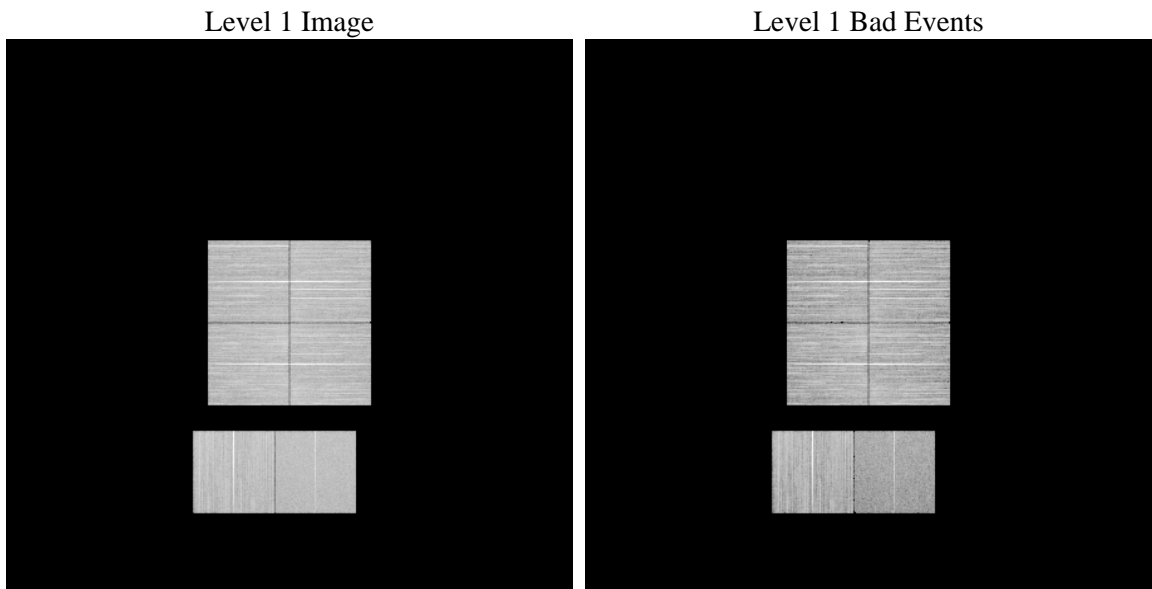
1 Front

seq_num	 	Sequence number
obs_id	57834	Observation id
title	ACIS-012367 diagnostics	Proposal title
observer	CHANDRA engineering request/realtime commanding	Principal investig
object	 	Source name
dtcycle	0	
cycle	P	events from which exps? Prim/Second/Both
ra_targ	0.0	Observer's specified target RA [deg]
dec_targ	0.0	Observer's specified target Dec [deg]
ra_nom	244.97983653136	Nominal RA [deg]
dec_nom	-11.979173316735	Nominal Dec [deg]
roll_nom	100.53377614091	Nominal Roll [deg]
revision	3	Processing version of data
ontime	8030.7026253939	Sum of GTIs [s]
livetime	7929.0130332425	Livetime [s]
ontime0	6967.618272543	Sum of GTIs [s]
ontime1	7272.2296527028	Sum of GTIs [s]
ontime2	6808.7279177904	Sum of GTIs [s]
ontime3	6974.1824418902	Sum of GTIs [s]
ontime6	7382.341153264	Sum of GTIs [s]
ontime7	8030.7026253939	Sum of GTIs [s]
l2events	537079	Number of level 2 events

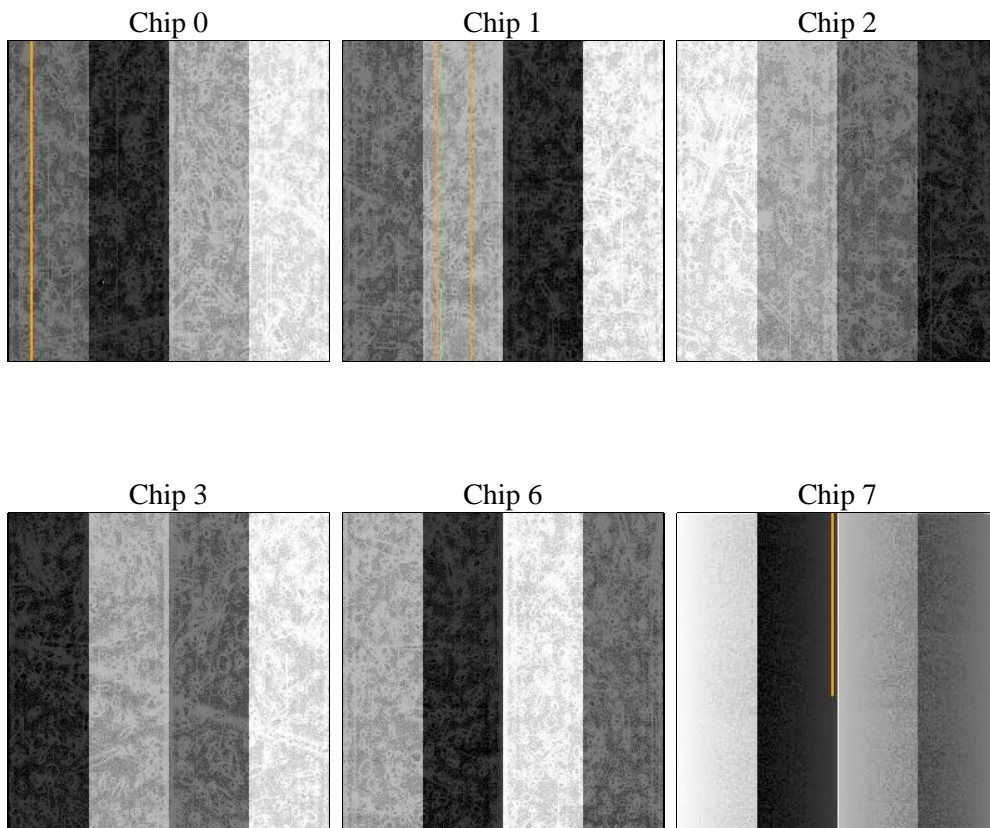
2 OBI

2.1 OBI

2.1.1 Images



2.1.2 Bias



2.1.3 Parameters

obi_num	0	Obi number	sched_exp_time	18300	[s] Scheduled observation exposure time
ascdsver	8.4.4	Processing system revision	ontime	8030.7026253939	Sum of GTIs [s]
caldsver	4.4.9	 	ontime0	6967.618272543	Sum of GTIs [s]
date	2012-05-14T01:01:02	Date and time of file creation	ontime1	7272.2296527028	Sum of GTIs [s]
revision	3	Processing version of data	ontime2	6808.7279177904	Sum of GTIs [s]
			ontime3	6974.1824418902	Sum of GTIs [s]
			ontime6	7382.341153264	Sum of GTIs [s]
			ontime7	8030.7026253939	Sum of GTIs [s]
			l1events	1488020	Number of level 1 events

2.1.4 Events

	ccd 0	ccd 1	ccd 2	ccd 3	ccd 6	ccd 7		ccd 0	ccd 1	ccd 2	ccd 3	ccd 6	ccd 7
level 1 events	240645	258941	251608	250498	258385	227943	grade 0 events	46360	47731	46015	47437	49975	26859
rejected events	156707	171572	168954	165477	165557	93647		19%	18%	18%	18%	19%	11%
rejected %	65%	66%	67%	66%	64%	41%	grade 1 events	339	283	364	376	269	140
								0%	0%	0%	0%	0%	0%
							grade 2 events	15925	16978	15470	15619	17580	33737
								6%	6%	6%	6%	6%	14%
							grade 3 events	5683	5969	5715	5971	6198	12483
								2%	2%	2%	2%	2%	5%
							grade 4 events	5654	5887	5683	5815	6086	12505
								2%	2%	2%	2%	2%	5%
							grade 5 events	3249	3476	3032	3652	3789	10453
								1%	1%	1%	1%	1%	4%
							grade 6 events	12763	13552	12267	12712	15776	52834
								5%	5%	4%	5%	6%	23%
							grade 7 events	150672	165065	163062	158916	158712	78932
								62%	63%	64%	63%	61%	34%

2.2 Compared Parameters

Parameter	Planned	Actual
Instrument	ACIS	ACIS
Detector	ACIS-012367	ACIS-012367
Grating	NONE	NONE
Data mode	FAINT	FAINT
Observation mode	SECONDARY	SECONDARY
[deg] Pointing RA	244.9798366133791	244.9798365313583
[deg] Pointing Dec	-11.9791732135787	-11.97917331673483
[deg] Pointing Roll	100.5337761685124	100.5337761409098
[mm] SIM focus pos	-0.68282252473119	-0.68282252473119
[mm] SIM defocus	0.8505140384245534	0.8505140384245534
[mm] SIM translation stage pos	250.4660330802	250.4660330802
[mm] SIM translation stage offset	-0.01005726120527584	-0.01005726120527584
[s] Observation start time (MET)	326045643.42615	326045643.42615
Observation start date	2008-05-01T16:44:00	2008-05-01T16:14:03
[s] Observation end time (MET)	326068144.605457	326068144.605457
Observation end date	2008-05-01T21:49:00	2008-05-01T22:29:04
Read mode	TIMED	TIMED

Parameter	Planned	Actual
Obspar format version number	7	7
Obspar file type	PREDICTED	ACTUAL
Obspar update status	OVERRIDE	OVERRIDE
Number of optional ACIS chips dropped	0	0
On-chip summing requested	N	N
Subarray requested	NONE	NONE
Alternating exposures requested	N	N
[s] Primary exposure time	3.2	3.2

2.3 Star Slots

2.4 FID Slots

A Summary

A.1 Status

V&V Scientist	Jen Lauer
V&V Date (YYYY-MM-DD)	2012.05.15
V&V Edition	1
V&V Disposition and Status	OK
V&V Charge Time	8.0307026253939

A.2 Comments