

V&V Reference Report

L2 ASCDS Version : 8.4.4

Observation 57384 - L2 Version 2
Chandra X-Ray Center

L2 Processing Date : May 28 2012

Contents

1	Front	2
2	OBI	3
2.1	OBI	3
2.1.1	Images	3
2.1.2	Bias	3
2.1.3	Parameters	4
2.1.4	Events	4
2.2	Compared Parameters	5
2.3	Star Slots	6
2.4	FID Slots	6
A	Summary	7
A.1	Status	7
A.2	Comments	7

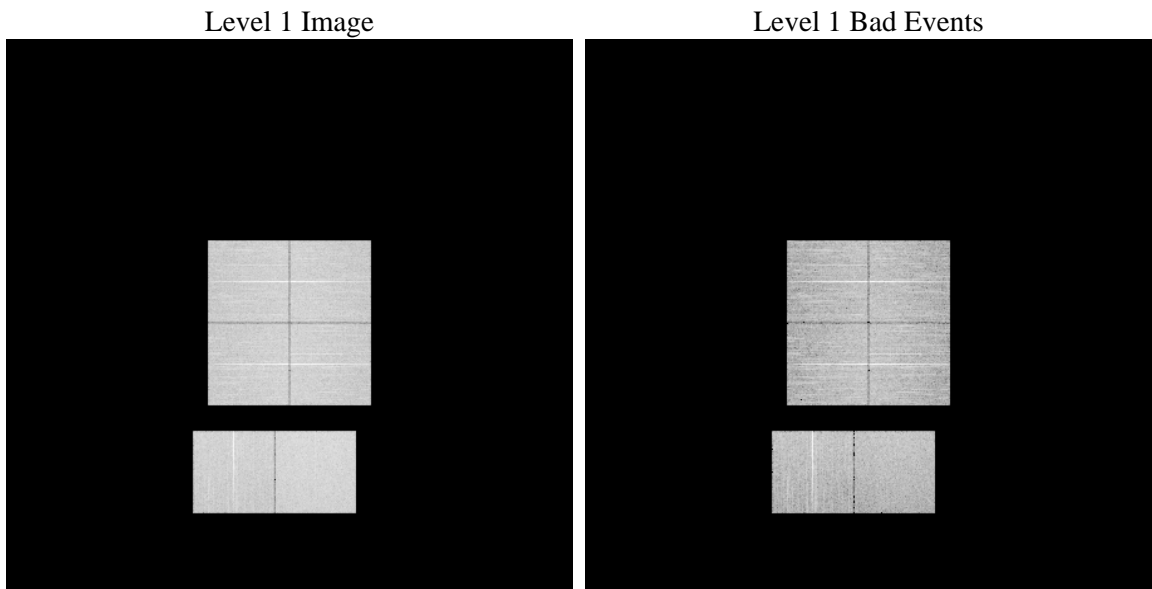
1 Front

seq_num	 	Sequence number
obs_id	57384	Observation id
title	ACIS-012367 diagnostics	Proposal title
observer	CHANDRA engineering request/realtime commanding	Principal investig
object	 	Source name
dtcycle	0	
cycle	P	events from which exps? Prim/Second/Both
ra_targ	0.0	Observer's specified target RA [deg]
dec_targ	0.0	Observer's specified target Dec [deg]
ra_nom	107.02609978272	Nominal RA [deg]
dec_nom	-1.4892424470472	Nominal Dec [deg]
roll_nom	341.78738158189	Nominal Roll [deg]
revision	2	Processing version of data
ontime	8182.3280007839	Sum of GTIs [s]
livetime	8078.7184368316	Livetime [s]
ontime0	8182.2869607806	Sum of GTIs [s]
ontime1	8182.2459207773	Sum of GTIs [s]
ontime2	8182.204880774	Sum of GTIs [s]
ontime3	8182.3690407872	Sum of GTIs [s]
ontime6	8182.1638407707	Sum of GTIs [s]
ontime7	8182.3280007839	Sum of GTIs [s]
l2events	513310	Number of level 2 events

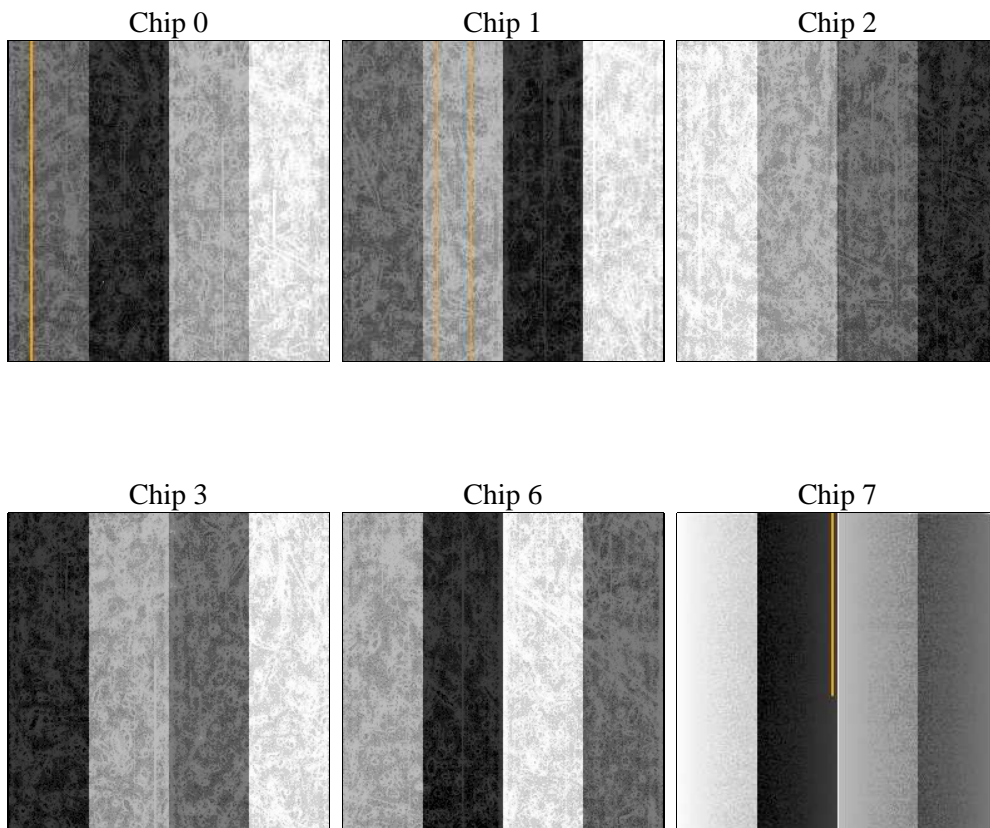
2 OBI

2.1 OBI

2.1.1 Images



2.1.2 Bias



2.1.3 Parameters

obi_num	0	Obi number	sched_exp_time	0.0	[s] Scheduled observation exposure time
ascdsver	8.4.4	Processing system revision	ontime	8182.3280007839	Sum of GTIs [s]
caldsver	4.4.9	 	ontime0	8182.2869607806	Sum of GTIs [s]
date	2012-05-29T02:23:42	Date and time of file creation	ontime1	8182.2459207773	Sum of GTIs [s]
revision	2	Processing version of data	ontime2	8182.204880774	Sum of GTIs [s]
			ontime3	8182.3690407872	Sum of GTIs [s]
			ontime6	8182.1638407707	Sum of GTIs [s]
			ontime7	8182.3280007839	Sum of GTIs [s]
			l1events	987614	Number of level 1 events

2.1.4 Events

	ccd 0	ccd 1	ccd 2	ccd 3	ccd 6	ccd 7		ccd 0	ccd 1	ccd 2	ccd 3	ccd 6	ccd 7
level 1 events	155942	156527	159312	162233	162990	190610	grade 0 events	45481	44922	46203	46286	46255	23001
rejected events	72193	72013	75597	78263	76090	70594		29%	28%	29%	28%	28%	12%
rejected %	46%	46%	47%	48%	46%	37%	grade 1 events	369	293	376	365	313	192
								0%	0%	0%	0%	0%	0%
							grade 2 events	15315	15888	14718	14647	15638	26267
								9%	10%	9%	9%	9%	13%
							grade 3 events	5673	5639	5769	5788	5685	11318
								3%	3%	3%	3%	3%	5%
							grade 4 events	5576	5770	5718	5723	5589	11419
								3%	3%	3%	3%	3%	5%
							grade 5 events	4072	4215	3851	4435	4397	11248
								2%	2%	2%	2%	2%	5%
							grade 6 events	12714	13316	12235	12498	14730	49355
								8%	8%	7%	7%	9%	25%
							grade 7 events	66742	66484	70442	72491	70383	57810
								42%	42%	44%	44%	43%	30%

2.2 Compared Parameters

Parameter	Planned	Actual	Parameter	Planned	Actual
Instrument	ACIS	ACIS	Obspar format version number	7	7
Detector	ACIS-012367	ACIS-012367	Obspar file type	PREDICTED	ACTUAL
Grating	NONE	NONE	Obspar update status	NONE	UPDATED
Data mode	FAINT	FAINT	Number of optional ACIS chips dropped	0	0
Observation mode	SECONDARY	SECONDARY	On-chip summing requested	N	N
[deg] Pointing RA	0	107.0260997827186	Subarray requested	NONE	NONE
[deg] Pointing Dec	0	-1.489242447047238	Alternating exposures requested	N	N
[deg] Pointing Roll	0.0	341.7873815818948	[s] Primary exposure time	3.2	3.2
[mm] SIM focus pos	-1.429586	-0.6828225247311905			
[mm] SIM defocus	0.1037507710433287	0.8505141146731063			
[mm] SIM translation stage pos	250.455976	250.466033080201			
[mm] SIM translation stage offset	0	-0.01005468664627074			
[s] Observation start time (MET)	348216873.475177	348216872.45018			
Observation start date	2009-01-13T06:54:33	2009-01-13T06:54:32			
[s] Observation end time (MET)	348229181.675785	348229180.65079			
Observation end date	2009-01-13T10:19:42	2009-01-13T10:19:40			
Read mode	TIMED	TIMED			

2.3 Star Slots

2.4 FID Slots

A Summary

A.1 Status

V&V Scientist	Beth Sundheim
V&V Date (YYYY-MM-DD)	2012.06.04
V&V Edition	1
V&V Disposition and Status	OK
V&V Charge Time	8.1823280007839

A.2 Comments