

V&V Reference Report

L2 ASCDS Version : 8.4.5

Observation 56384 - L2 Version 2
Chandra X-Ray Center

L2 Processing Date : Jun 23 2012

Contents

1	Front	2
2	OBI	3
2.1	OBI	3
2.1.1	Images	3
2.1.2	Bias	3
2.1.3	Parameters	4
2.1.4	Events	4
2.2	Compared Parameters	5
2.3	Star Slots	6
2.4	FID Slots	6
A	Summary	7
A.1	Status	7
A.2	Comments	7

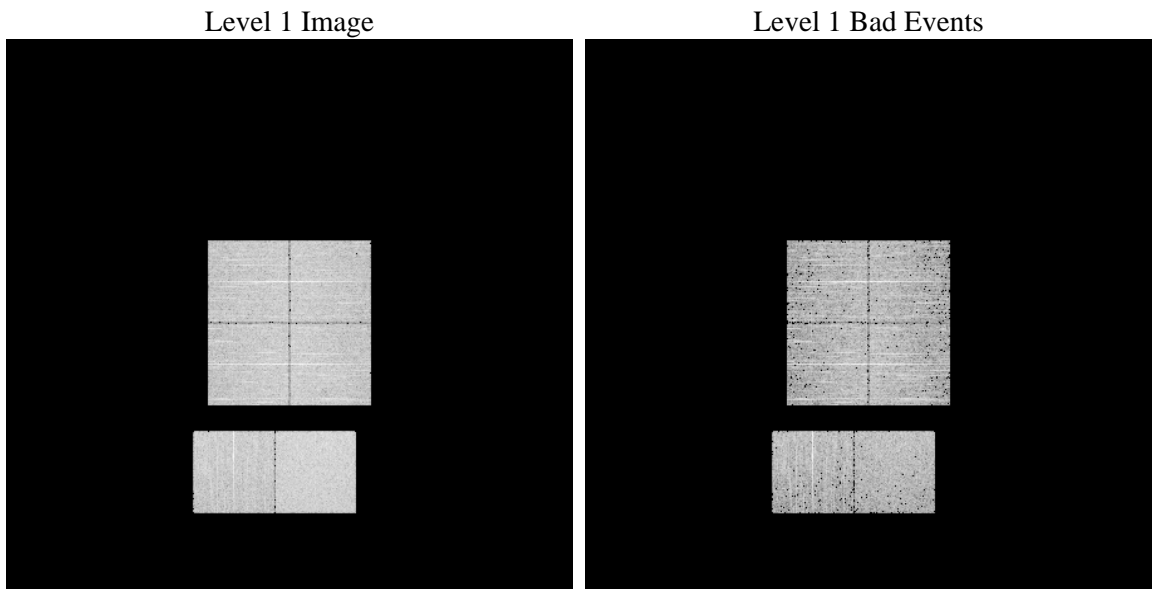
1 Front

seq_num	 	Sequence number
obs_id	56384	Observation id
title	ACIS-012367 diagnostics	Proposal title
observer	CHANDRA engineering request/realtime commanding	Principal investig
object	 	Source name
dtcycle	0	
cycle	P	events from which exps? Prim/Second/Both
ra_targ	0.0	Observer's specified target RA [deg]
dec_targ	0.0	Observer's specified target Dec [deg]
ra_nom	203.48527207432	Nominal RA [deg]
dec_nom	-0.47536222422486	Nominal Dec [deg]
roll_nom	88.005736219224	Nominal Roll [deg]
revision	2	Processing version of data
ontime	3363.1999875307	Sum of GTIs [s]
livetime	3320.6131242127	Livetime [s]
ontime0	3363.1999875307	Sum of GTIs [s]
ontime1	3363.1999875307	Sum of GTIs [s]
ontime2	3363.1999875307	Sum of GTIs [s]
ontime3	3363.1999875307	Sum of GTIs [s]
ontime6	3363.1999875307	Sum of GTIs [s]
ontime7	3363.1999875307	Sum of GTIs [s]
l2events	165528	Number of level 2 events

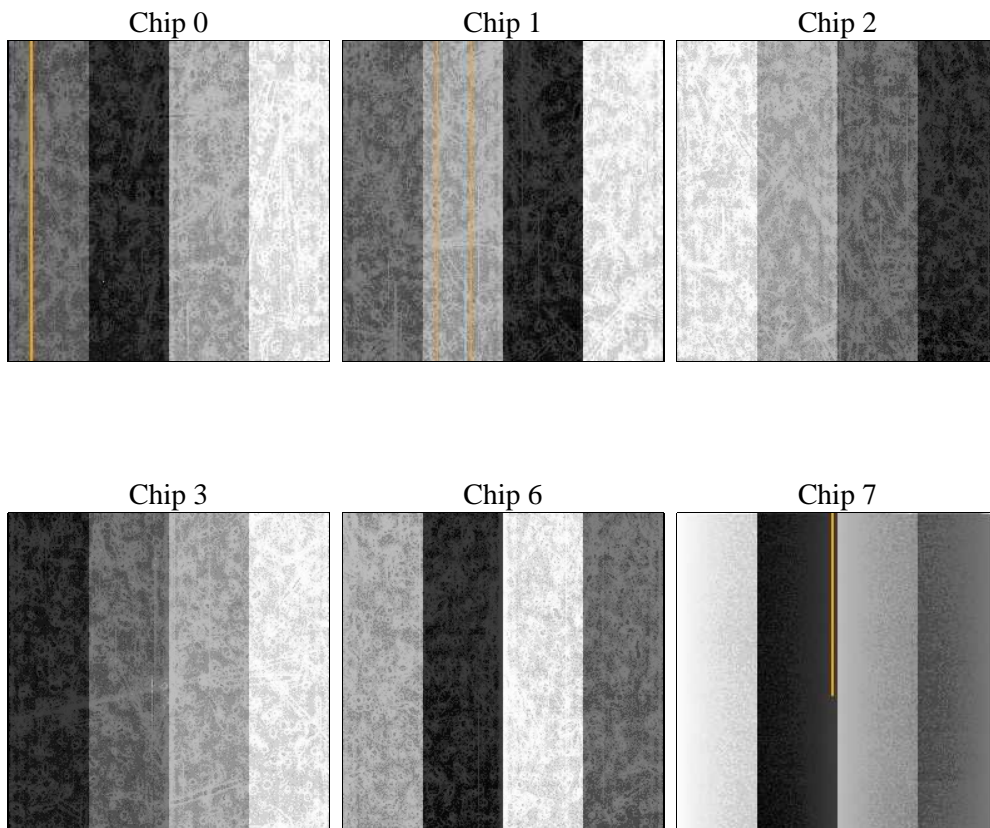
2 OBI

2.1 OBI

2.1.1 Images



2.1.2 Bias



2.1.3 Parameters

obi_num	0	Obi number	sched_exp_time	0.0	[s] Scheduled observation exposure time
ascdsver	8.4.5	Processing system revision	ontime	3363.1999875307	Sum of GTIs [s]
caldbver	4.4.10	 	ontime0	3363.1999875307	Sum of GTIs [s]
date	2012-06-23T05:04:32	Date and time of file creation	ontime1	3363.1999875307	Sum of GTIs [s]
revision	2	Processing version of data	ontime2	3363.1999875307	Sum of GTIs [s]
			ontime3	3363.1999875307	Sum of GTIs [s]
			ontime6	3363.1999875307	Sum of GTIs [s]
			ontime7	3363.1999875307	Sum of GTIs [s]
			l1events	350698	Number of level 1 events

2.1.4 Events

	ccd 0	ccd 1	ccd 2	ccd 3	ccd 6	ccd 7		ccd 0	ccd 1	ccd 2	ccd 3	ccd 6	ccd 7
level 1 events	55311	54205	56725	57812	56442	70203	grade 0 events	14349	14192	14636	14677	14651	7572
rejected events	28889	27558	30238	31198	28974	28770		25%	26%	25%	25%	25%	10%
rejected %	52%	50%	53%	53%	51%	40%	grade 1 events	115	80	117	107	104	63
								0%	0%	0%	0%	0%	0%
							grade 2 events	5092	5185	4761	4823	5125	9164
								9%	9%	8%	8%	9%	13%
							grade 3 events	1885	1771	1857	1809	1860	3859
								3%	3%	3%	3%	3%	5%
							grade 4 events	1786	1800	1936	1928	1899	3941
								3%	3%	3%	3%	3%	5%
							grade 5 events	1705	1708	1561	1838	1826	4523
								3%	3%	2%	3%	3%	6%
							grade 6 events	4034	4411	3980	4091	4661	18008
								7%	8%	7%	7%	8%	25%
							grade 7 events	26345	25058	27877	28539	26316	23073
								47%	46%	49%	49%	46%	32%

2.2 Compared Parameters

Parameter	Planned	Actual	Parameter	Planned	Actual
Instrument	ACIS	ACIS	Obspar format version number	7	7
Detector	ACIS-012367	ACIS-012367	Obspar file type	PREDICTED	ACTUAL
Grating	NONE	NONE	Obspar update status	NONE	UPDATED
Data mode	FAINT	FAINT	Number of optional ACIS chips dropped	0	0
Observation mode	SECONDARY	SECONDARY	On-chip summing requested	N	N
[deg] Pointing RA	0	203.4852720743162	Subarray requested	NONE	NONE
[deg] Pointing Dec	0	-0.4753622242248569	Alternating exposures requested	N	N
[deg] Pointing Roll	0.0	88.00573621922403	[s] Primary exposure time	3.2	3.2
[mm] SIM focus pos	-1.429586	-0.6828225247311905			
[mm] SIM defocus	0.1037507710433287	0.8505141146731063			
[mm] SIM translation stage pos	250.455976	250.466033080201			
[mm] SIM translation stage offset	0	-0.01005468664627074			
[s] Observation start time (MET)	385422997.740261	385422996.71527			
Observation start date	2010-03-19T21:56:38	2010-03-19T21:56:36			
[s] Observation end time (MET)	385456671.041969	385456670.01698			
Observation end date	2010-03-20T07:17:51	2010-03-20T07:17:50			
Read mode	TIMED	TIMED			

2.3 Star Slots

2.4 FID Slots

A Summary

A.1 Status

V&V Scientist	Jen Lauer
V&V Date (YYYY-MM-DD)	2012.06.28
V&V Edition	1
V&V Disposition and Status	OK
V&V Charge Time	3.3631999875307

A.2 Comments