

V&V Reference Report

L2 ASCDS Version : 7.6.7

Observation 5624 - L2 Version 002
Chandra X-Ray Center

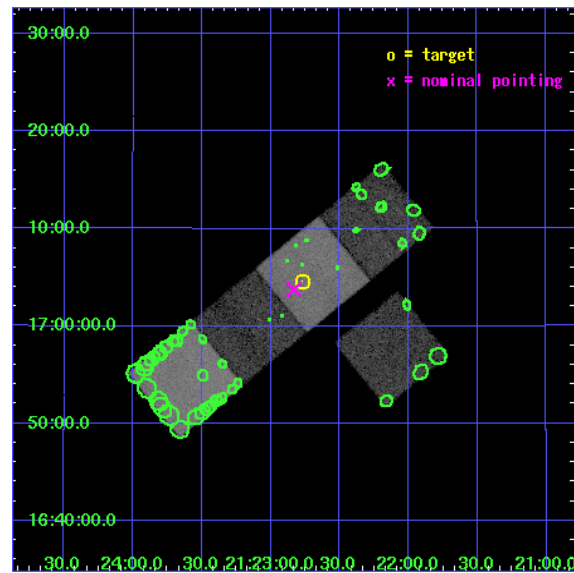
L2 Processing Date: Feb 15 2006

Contents

1	Front	2
2	OBI	3
2.1	OBI	3
2.1.1	Images	3
2.1.2	Bias	3
2.1.3	Parameters	4
2.1.4	Events	4
2.2	Compared Parameters	5
2.3	Aspect	6
2.4	Star Slots	9
2.4.1	Slot 3	9
2.4.2	Slot 4	10
2.4.3	Slot 5	11
2.4.4	Slot 6	12
2.4.5	Slot 7	13
2.5	FID Slots	14
2.5.1	Slot 0	14
2.5.2	Slot 1	15
2.5.3	Slot 2	16
3	Point Sources	17
A	Summary	18
A.1	Status	18
A.2	Comments	18

1 Front

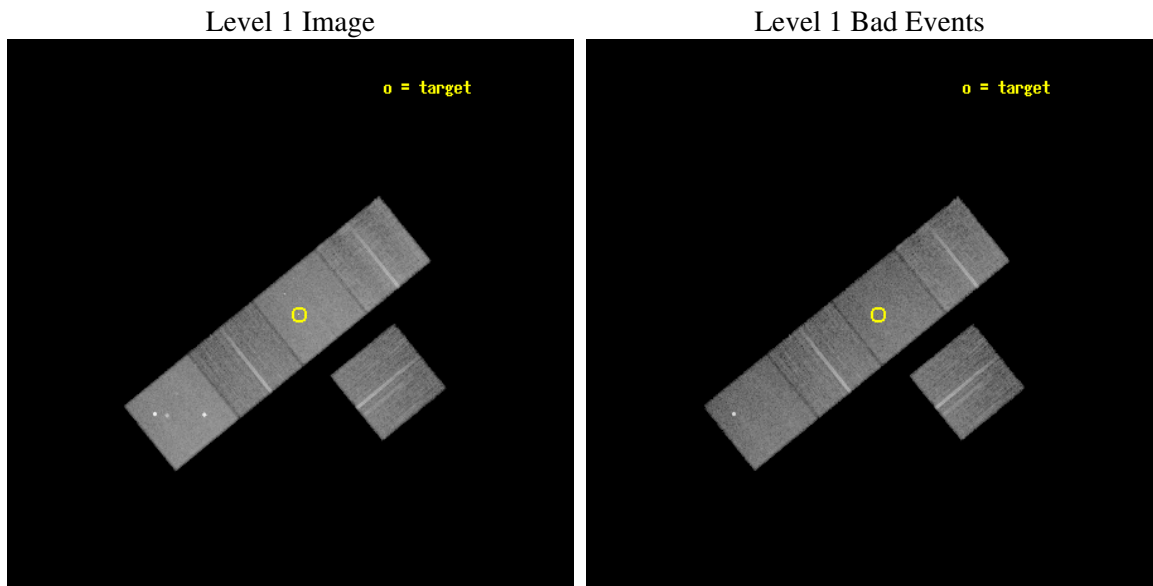
seq_num	701047
obs_id	5624
title	Extended inverse Compton emission from distant powerful radio galaxies
observer	Prof Andrew Fabian
object	3C 432
dtcycle	0
cycle	P
ra_targ	320.6925
dec_targ	17.077222
ra_nom	320.70814895383
dec_nom	17.062851970065
roll_nom	320.91194848062
revision	2
ontime	20038.399961472
livetime	19776.583513919
ontime3	20035.258971304
ontime5	20038.399961472
ontime6	20035.258991241
ontime7	20038.399961472
ontime8	20028.977050811
l2events	210621



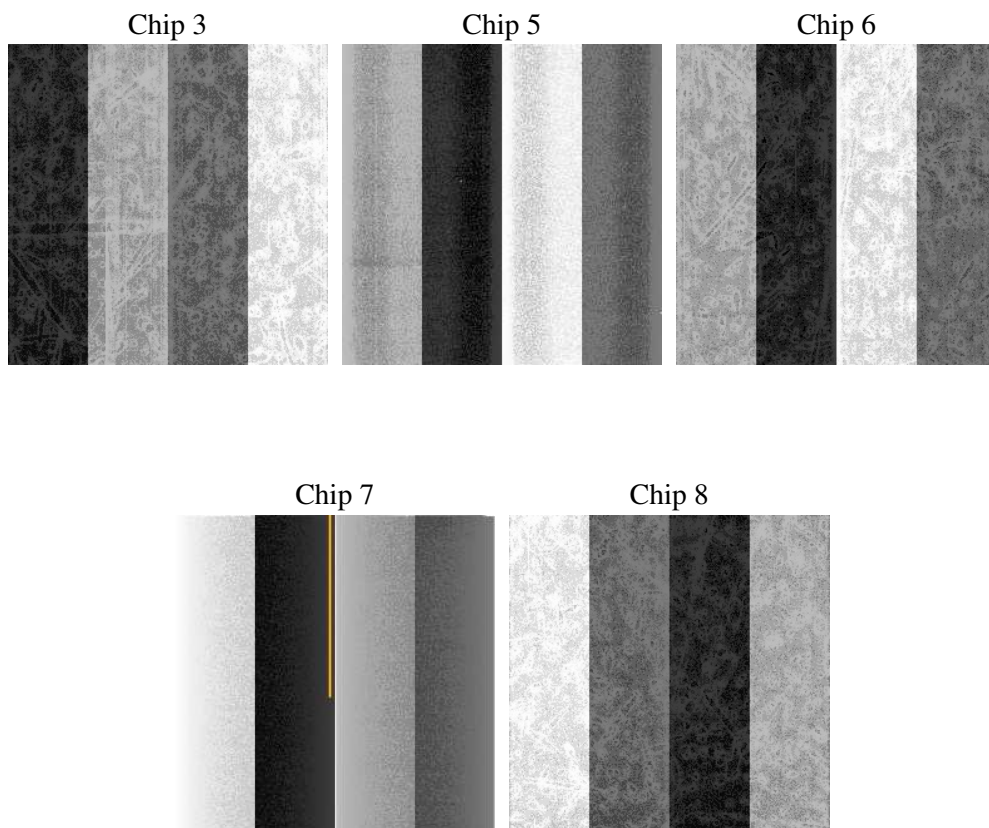
2 OBI

2.1 OBI

2.1.1 Images



2.1.2 Bias



2.1.3 Parameters

obi_num	0
ascdsver	7.6.7
caldbver	3.2.1
date	2006-02-16T01:49:12
revision	2

sched_exp_time	20000.000000
ontime	20042.725883603
ontime3	20039.584893435
ontime5	20042.725883603
ontime6	20039.584913373
ontime7	20042.725883603
ontime8	20033.302972943
l1events	864796

2.1.4 Events

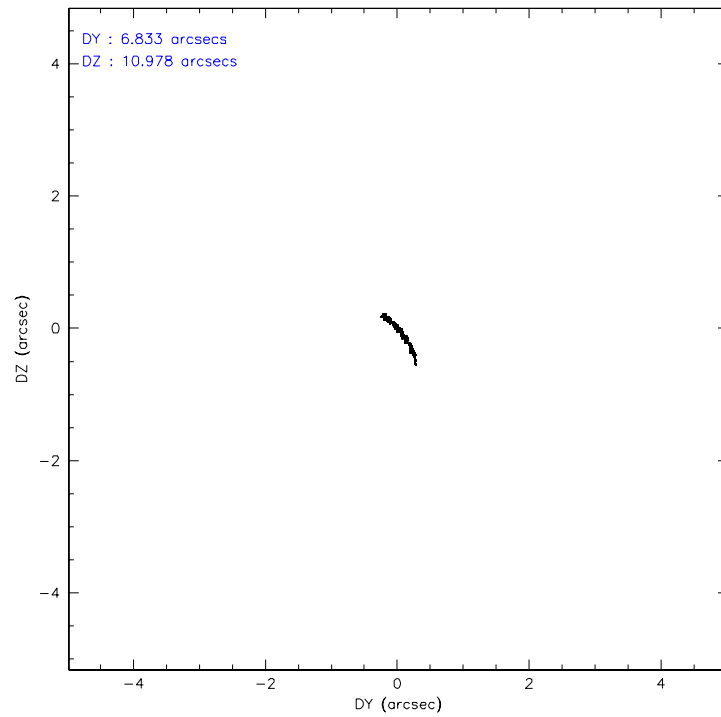
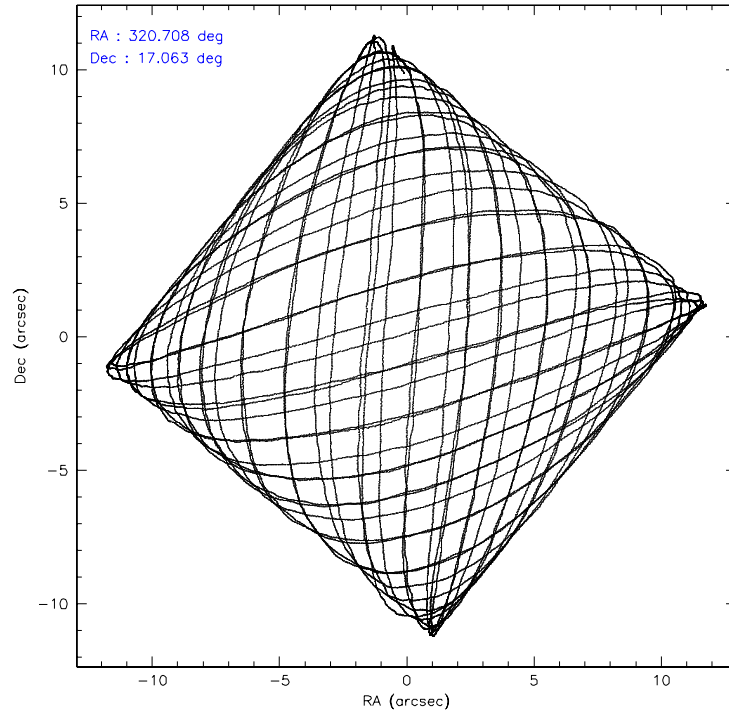
	ccd 3	ccd 5	ccd 6	ccd 7	ccd 8
level 1 events	138020	217937	140511	189949	178379
rejected events	120956	119316	122540	115424	137741
rejected %	87%	54%	87%	60%	77%

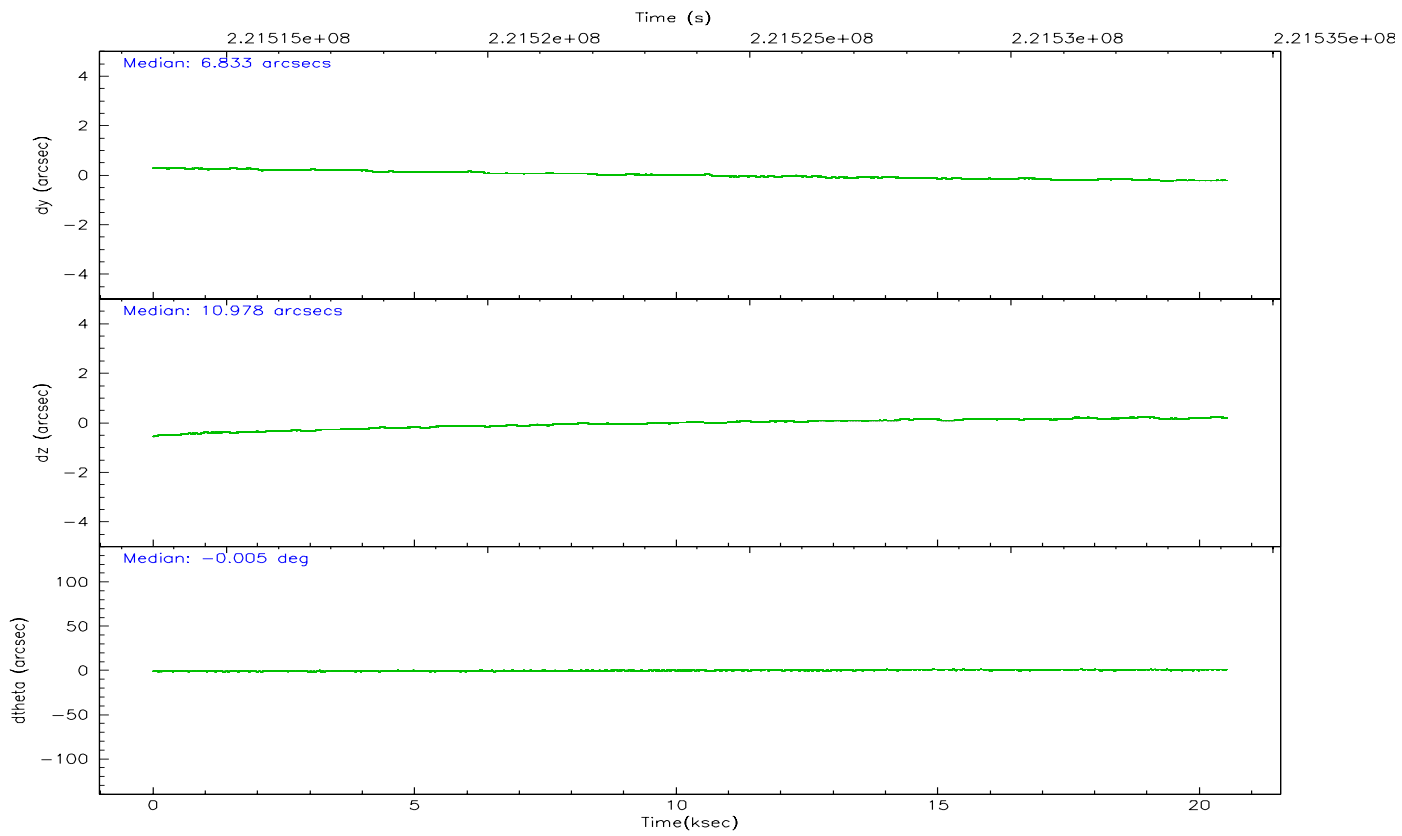
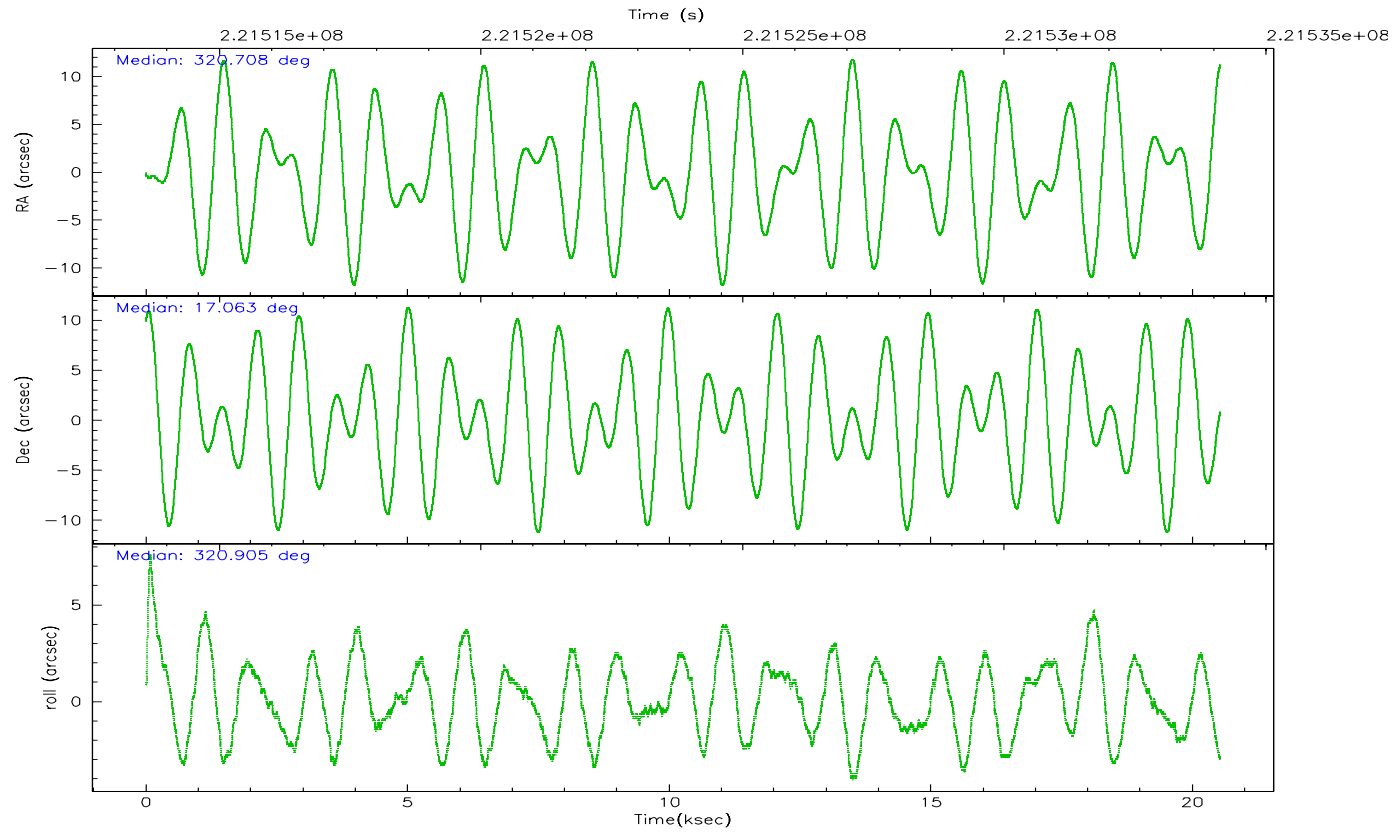
	ccd 3	ccd 5	ccd 6	ccd 7	ccd 8
grade 0 events	7527	10989	7353	5061	13756
	5%	5%	5%	2%	7%
grade 1 events	87	968	80	130	118
	0%	0%	0%	0%	0%
grade 2 events	3406	30020	3777	18656	8672
	2%	13%	2%	9%	4%
grade 3 events	1606	2650	1699	3936	4189
	1%	1%	1%	2%	2%
grade 4 events	1607	2071	1662	3798	3924
	1%	0%	1%	1%	2%
grade 5 events	6245	11321	6520	12575	8513
	4%	5%	4%	6%	4%
grade 6 events	2919	52907	3485	43080	10101
	2%	24%	2%	22%	5%
grade 7 events	114623	107011	115935	102713	129106
	83%	49%	82%	54%	72%

2.2 Compared Parameters

Parameter	Planned	Actual	Parameter	Planned	Actual
Instrument	ACIS	ACIS	Obspar format version number	6	6
Detector	ACIS-35678	ACIS-35678	Obspar file type	PREDICTED	ACTUAL
Grating	NONE	NONE	Obspar update status	NONE	UPDATED
Data mode	VFAINT	VFAINT	On-chip summing requested	N	N
Observation mode	POINTING	POINTING	Subarray requested	NONE	NONE
Pointing RA	320.679977	320.7081489538288	Alternating exposures requested	N	N
Pointing Dec	17.066773	17.0628519700647	Primary exposure time	0.000000	3.1
Pointing Roll	320.763588	320.9119484806176			
SIM focus pos (mm)	-0.684267	-0.6828225247311905			
SIM defocus (mm)	0	0.001444936568705701			
SIM translation stage pos (mm)	-190.132523	-190.1400660498719			
SIM translation stage offset (mm)	0	0.00754346686406393			
Observation start time	221514132.184000	221513028.15102			
Observation start date	2005-01-07T19:41:08	2005-01-07T19:23:48			
Observation end time	221534132.184000	221535095.88951			
Observation end date	2005-01-08T01:14:28	2005-01-08T01:31:35			
Read mode	TIMED	TIMED			

2.3 Aspect



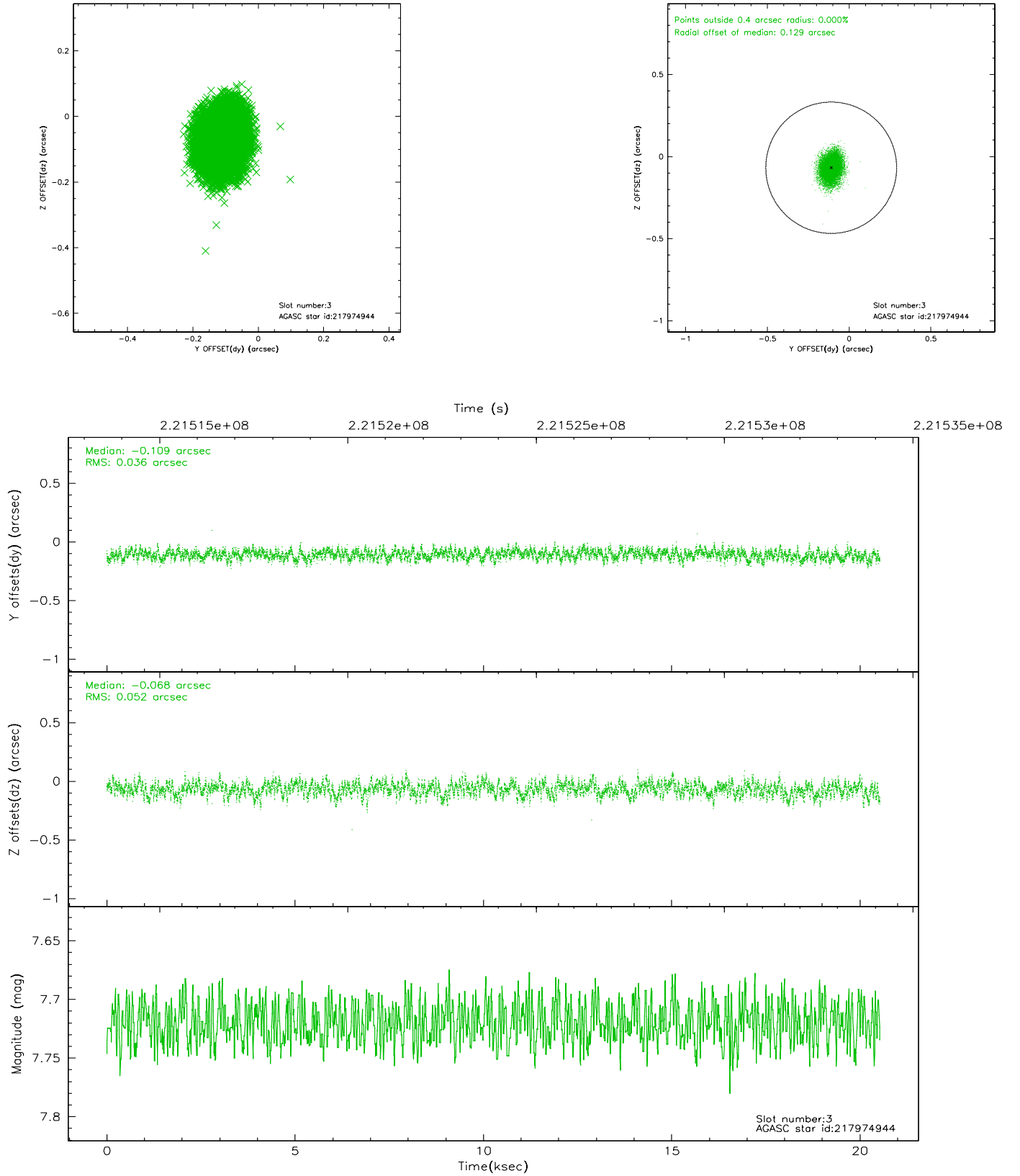


Slot Statistics

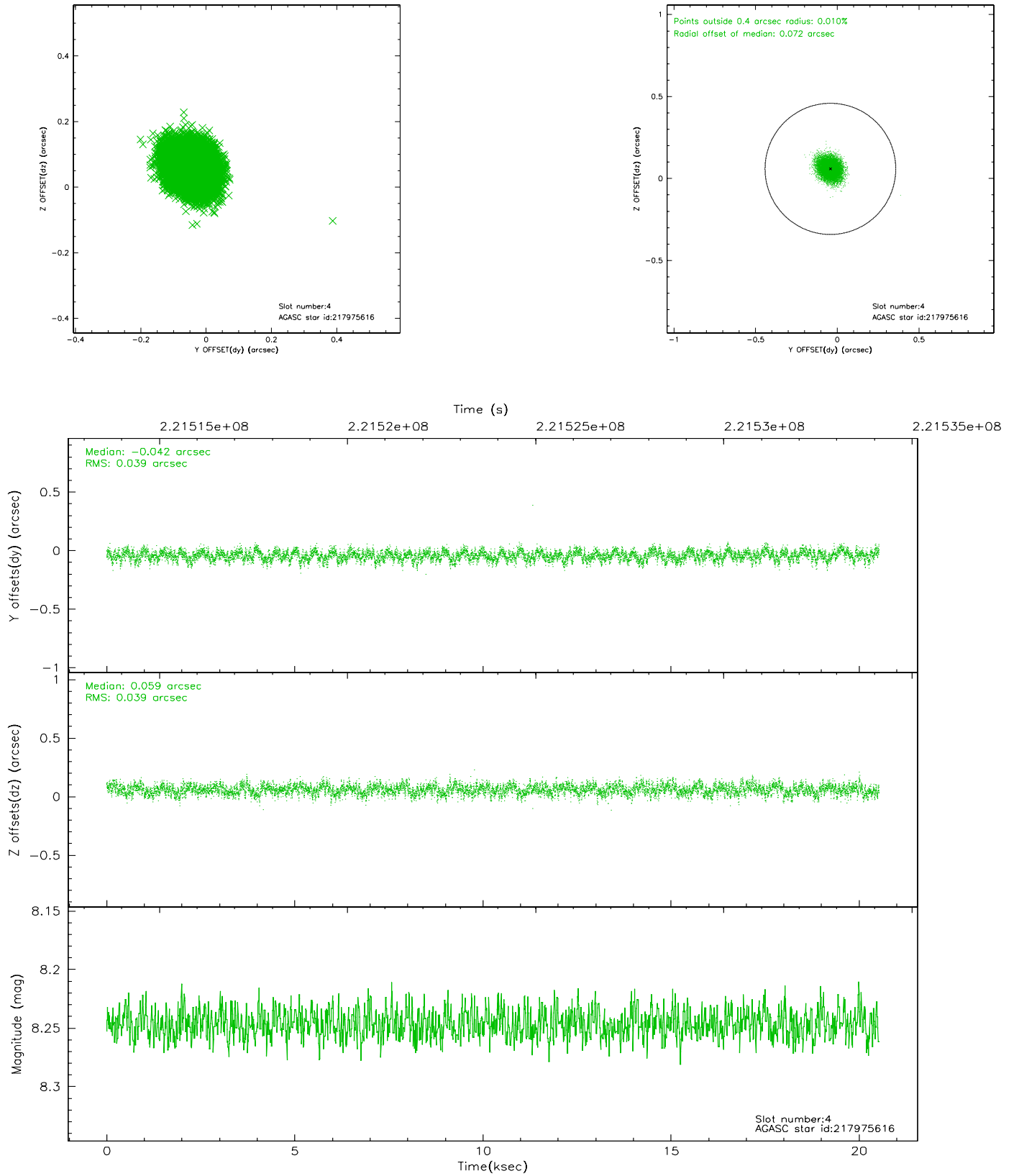
slot	status	id	mag	n_pts	med_dy	med_dz	dr1	dr2	ra	dec	mean_y	mean_z
0	FID	ACIS-S-1	7.18	5008	-0.009	-0.044	0.014	0.026	0.000000	0.000000	936.43	-1727.89
1	FID	ACIS-S-4	7.20	5006	0.017	0.040	0.012	0.020	0.000000	0.000000	2153.96	176.17
2	FID	ACIS-S-5	7.23	5008	-0.034	0.017	0.010	0.022	0.000000	0.000000	-1812.24	169.94
3	GUIDE	217974944	7.72	10017	-0.109	-0.068	0.067	0.110	320.083386	16.811544	-1013.06	-2009.48
4	GUIDE	217975616	8.25	10016	-0.042	0.059	0.058	0.095	320.656647	16.556245	1100.56	-1474.37
5	GUIDE	217977208	8.83	10014	0.082	-0.047	0.107	0.161	320.809762	16.301355	2091.00	-1850.40
6	GUIDE	218502840	9.05	10009	0.090	0.049	0.087	0.143	320.360025	16.964228	-619.52	-982.24
7	GUIDE	218498128	9.19	9996	-0.025	0.006	0.118	0.174	321.244715	17.445513	638.13	2285.08

2.4 Star Slots

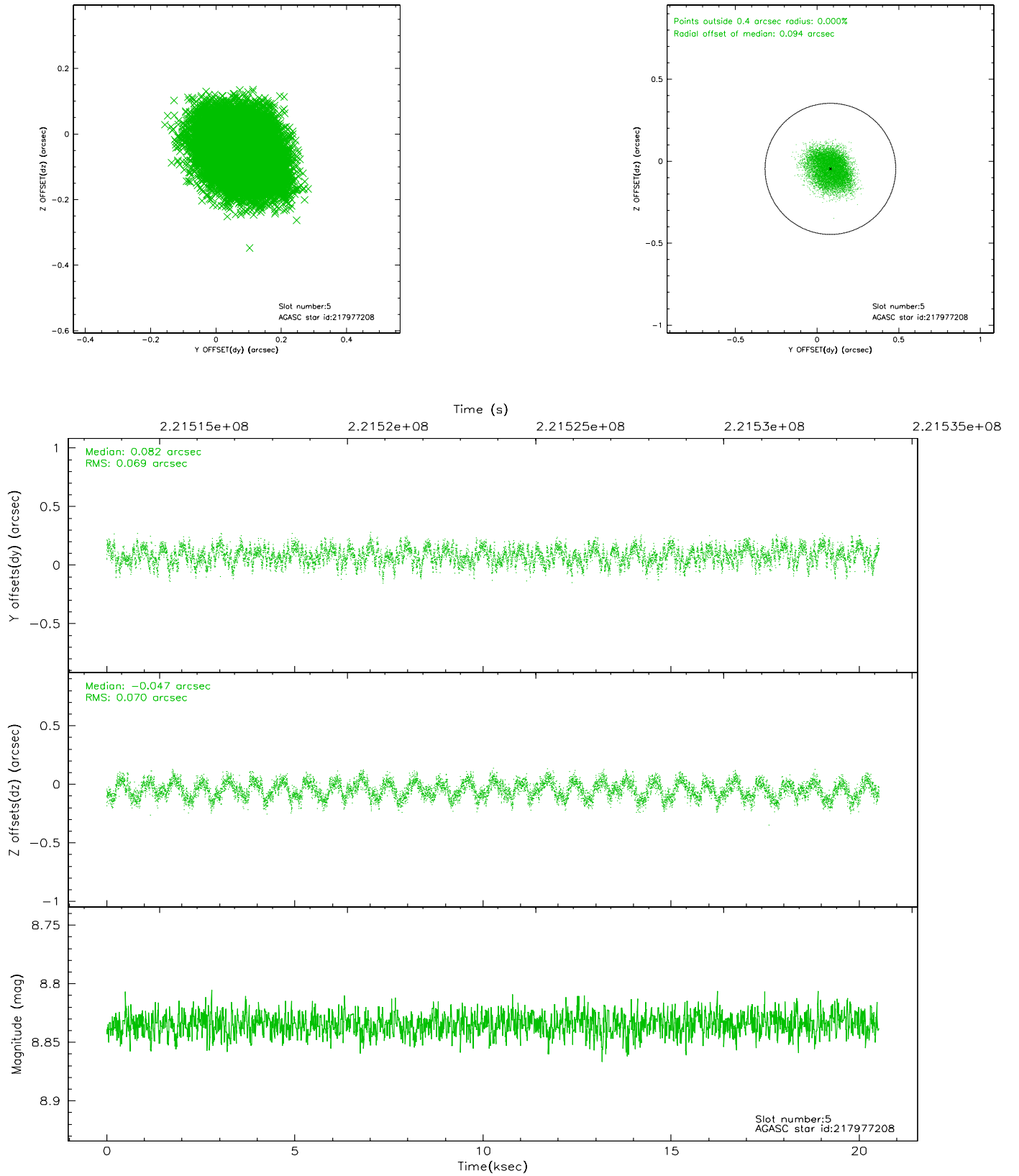
2.4.1 Slot 3



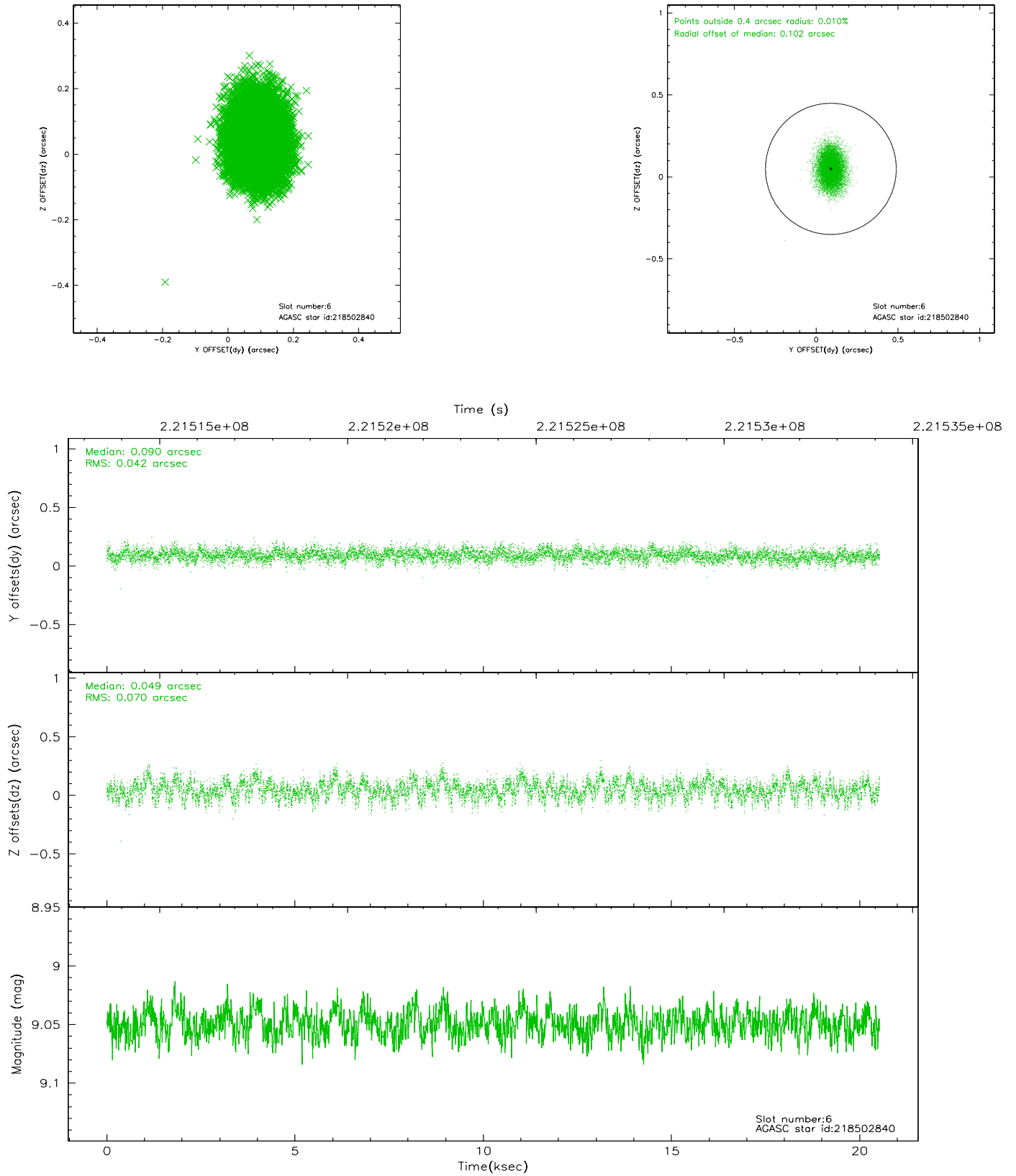
2.4.2 Slot 4



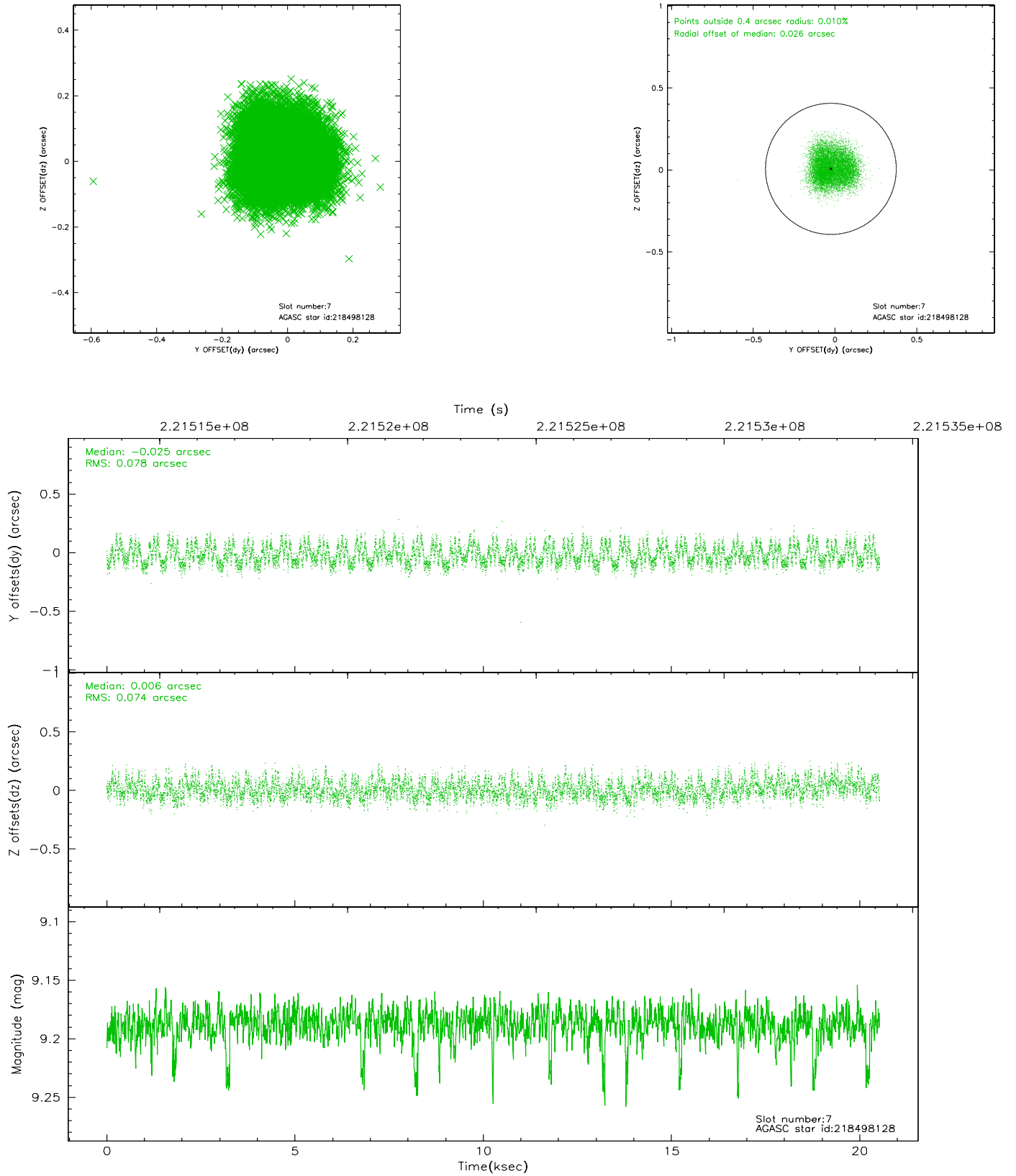
2.4.3 Slot 5



2.4.4 Slot 6

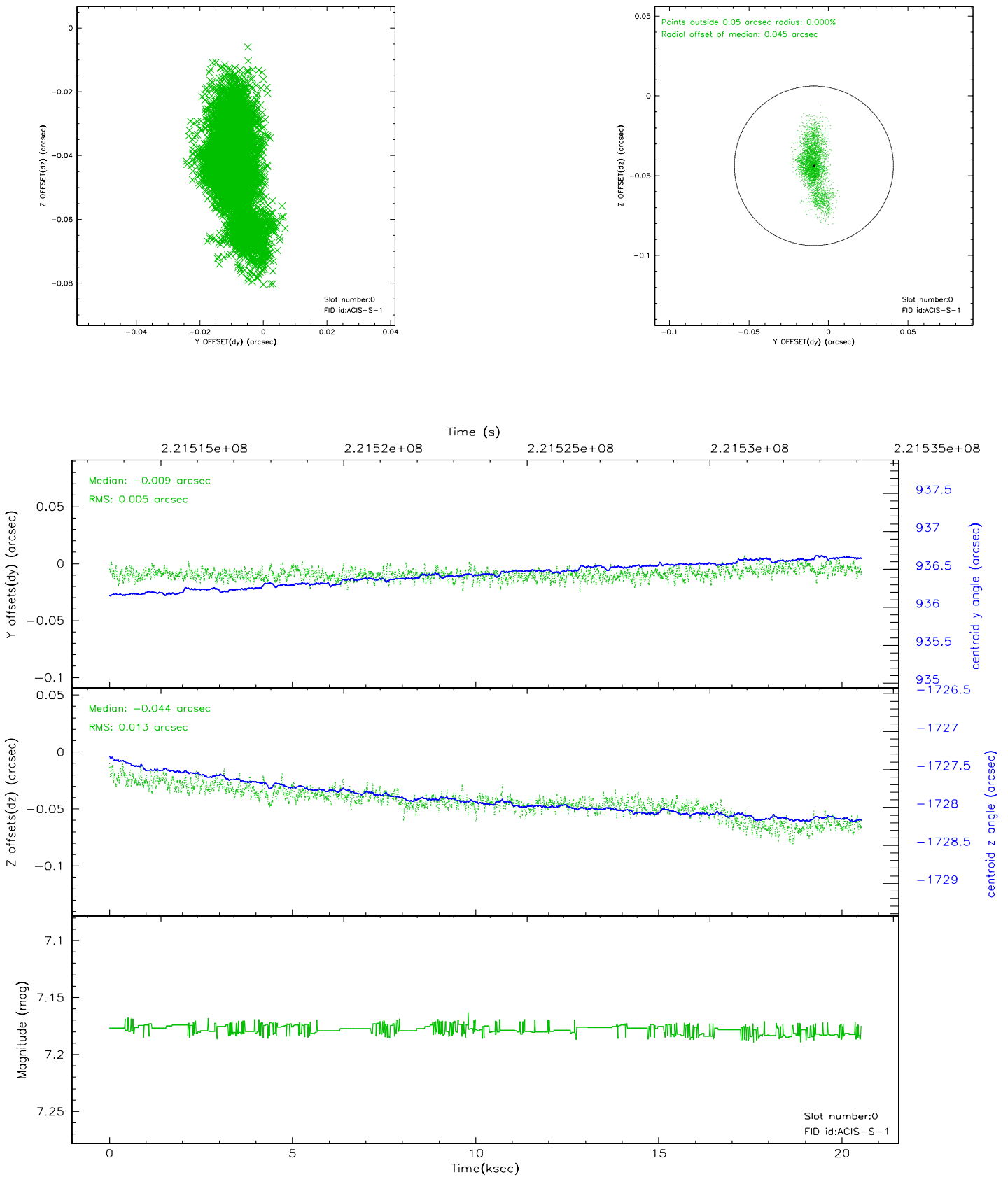


2.4.5 Slot 7

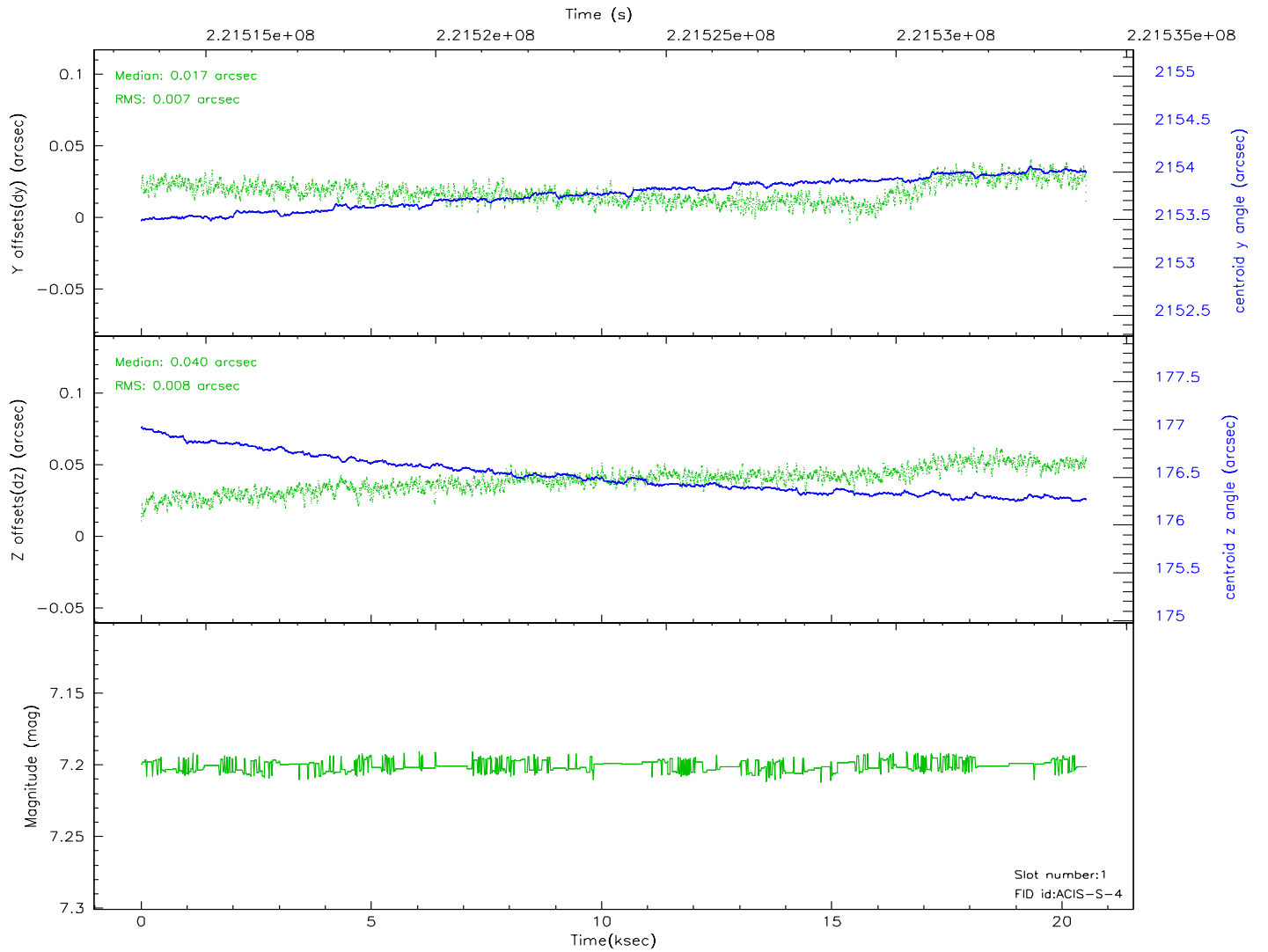
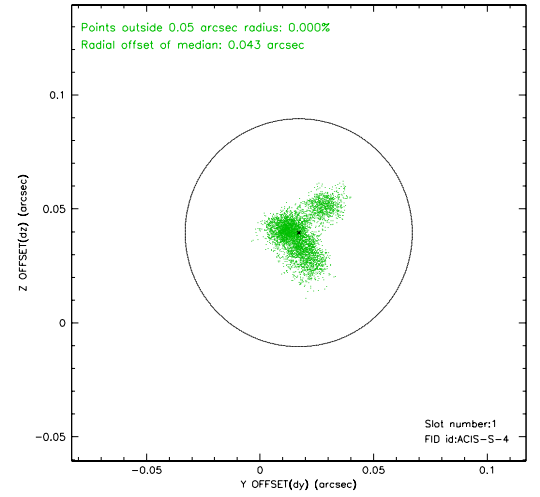
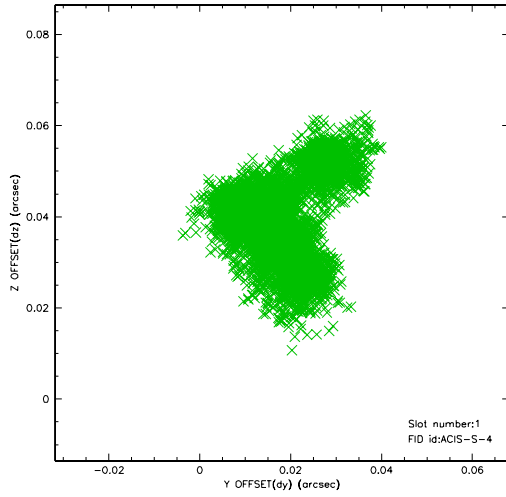


2.5 FID Slots

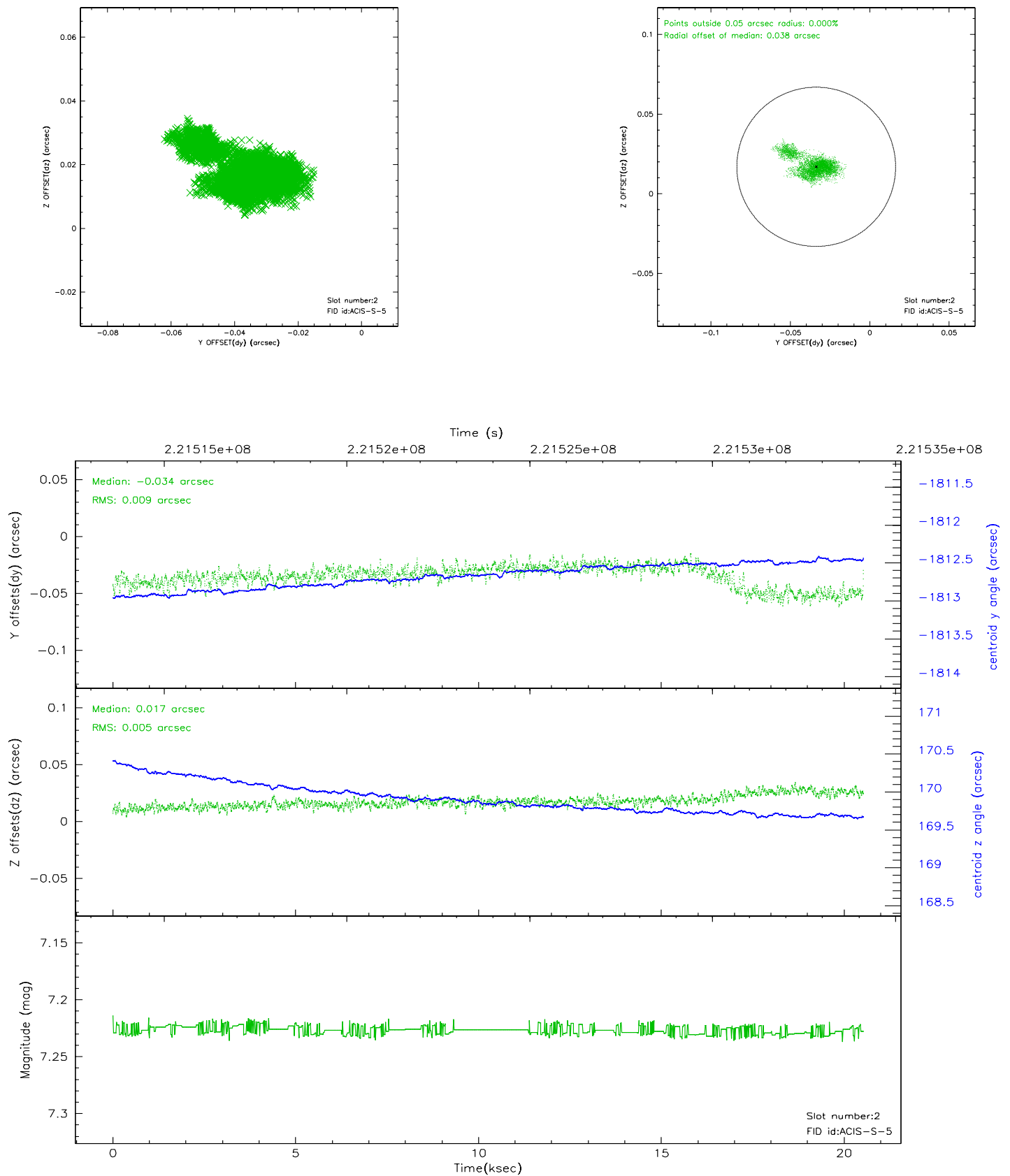
2.5.1 Slot 0



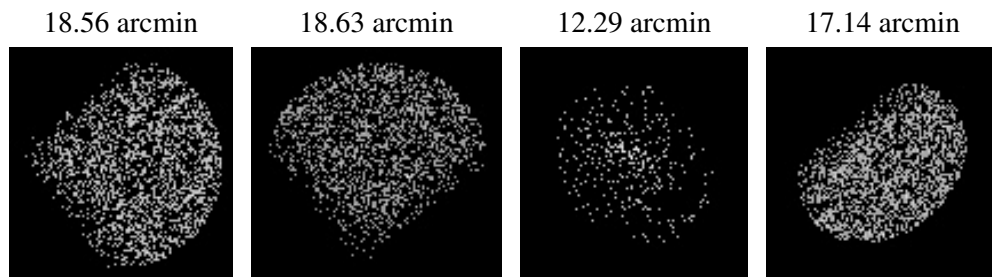
2.5.2 Slot 1



2.5.3 Slot 2



3 Point Sources



A Summary

A.1 Status

V&V Scientist	Beth Sundheim
V&V Date (YYYY-MM-DD)	2006.02.16
V&V Edition	1
V&V Disposition and Status	OK
V&V Charge Time	20.03839

A.2 Comments

Charge time:

Using existing charge time of 20.03839.