

V&V Reference Report

L2 ASCDS Version : 7.6.7.1

Observation 5574 - L2 Version 002
Chandra X-Ray Center

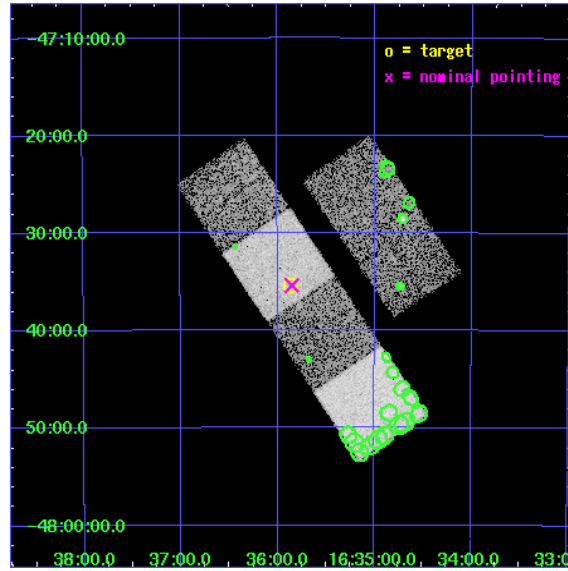
L2 Processing Date : Apr 2 2006

Contents

1	Front	2
2	OBI	3
2.1	OBI	3
2.1.1	Images	3
2.1.2	Bias	3
2.1.3	Parameters	4
2.1.4	Events	4
2.2	Compared Parameters	5
2.3	Aspect	6
2.4	Star Slots	9
2.4.1	Slot 3	9
2.4.2	Slot 4	10
2.4.3	Slot 5	11
2.4.4	Slot 6	12
2.4.5	Slot 7	13
2.5	FID Slots	14
2.5.1	Slot 0	14
2.5.2	Slot 1	15
2.5.3	Slot 2	16
3	Point Sources	17
A	Summary	18
A.1	Status	18
A.2	Comments	18

1 Front

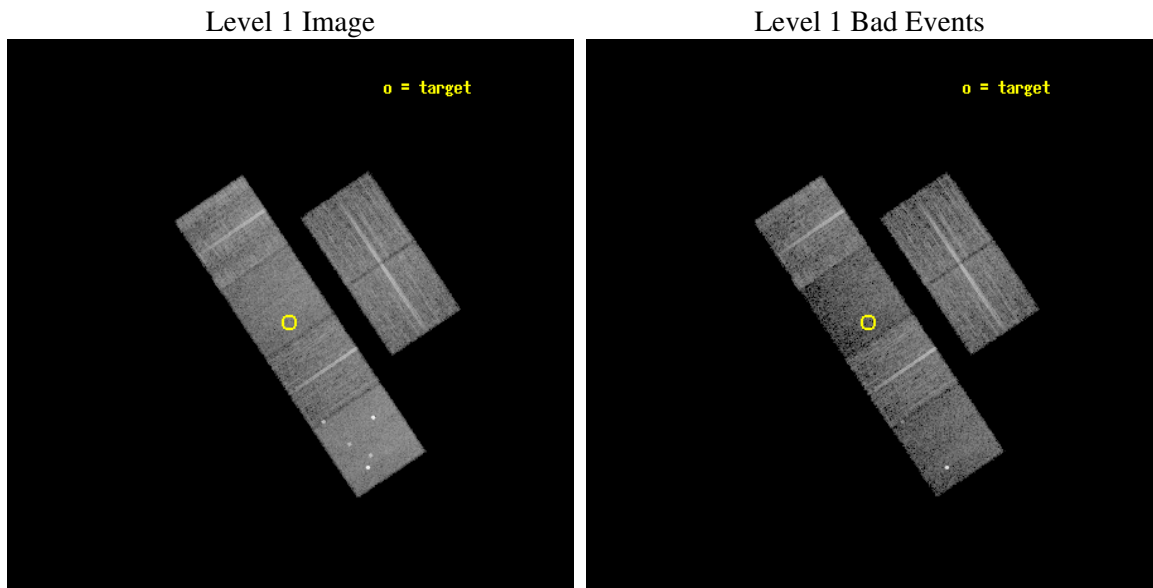
seq_num	500563
obs_id	5574
title	IS SGR 1627-41 A DIM ISOLATED NEUTRON STAR?
observer	Dr Chryssa Kouveliotou
object	SGR 1627-41
dtcycle	0
cycle	P
ra_targ	248.965833
dec_targ	-47.589806
ra_nom	248.96285094104
dec_nom	-47.589888354391
roll_nom	236.07879639432
revision	2
ontime	10143.999962211
livetime	10015.550526706
ontime2	10143.999962211
ontime3	10140.758972019
ontime5	10143.999962211
ontime6	10143.999962211
ontime7	10143.999962211
ontime8	10143.999962211
l2events	87148



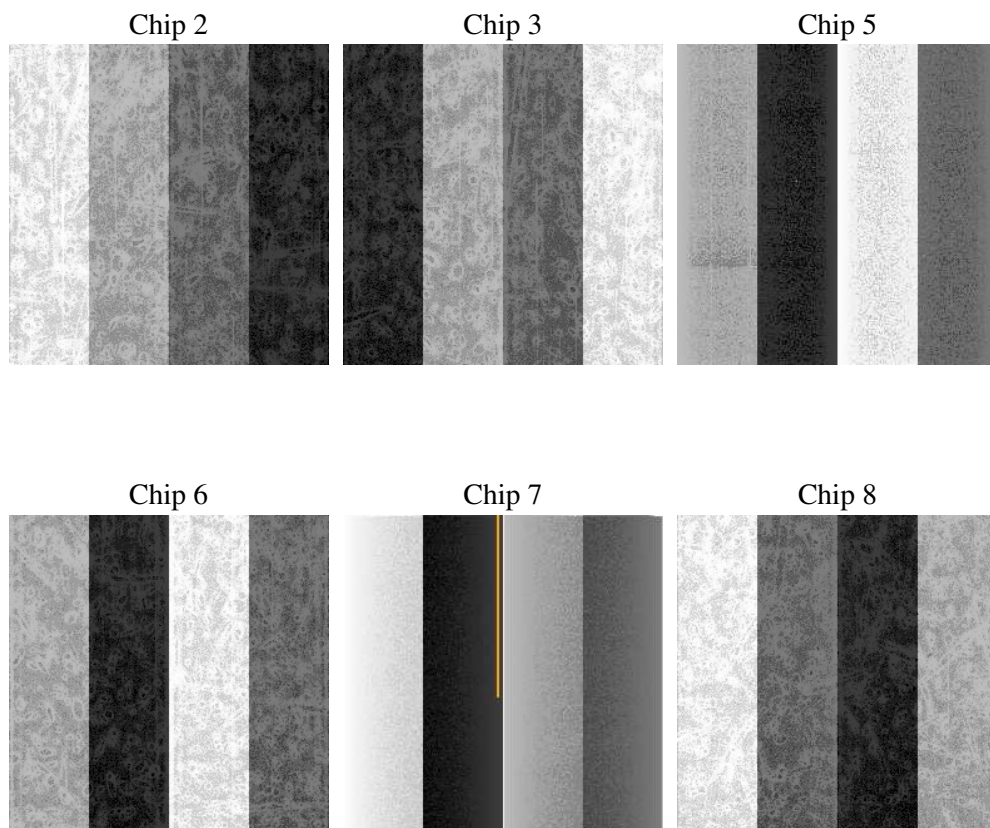
2 OBI

2.1 OBI

2.1.1 Images



2.1.2 Bias



2.1.3 Parameters

obi_num	0
ascdsver	7.6.7.1
caldbver	3.2.1
date	2006-04-02T17:54:07
revision	2

sched_exp_time	10000.000000
ontime	11029.128668427
ontime2	11029.128668427
ontime3	11025.887678236
ontime5	11029.128668427
ontime6	11029.128668427
ontime7	11029.128668427
ontime8	11029.128668427
l1events	441685

2.1.4 Events

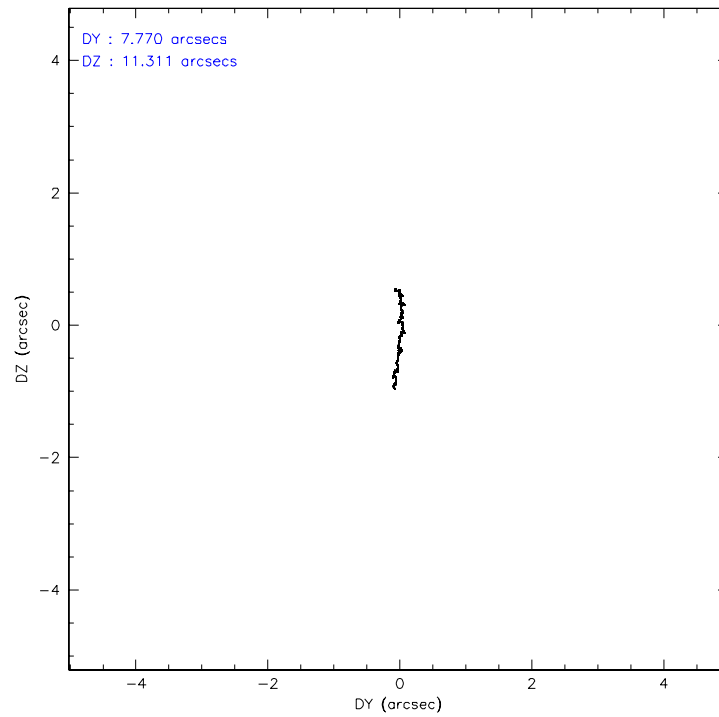
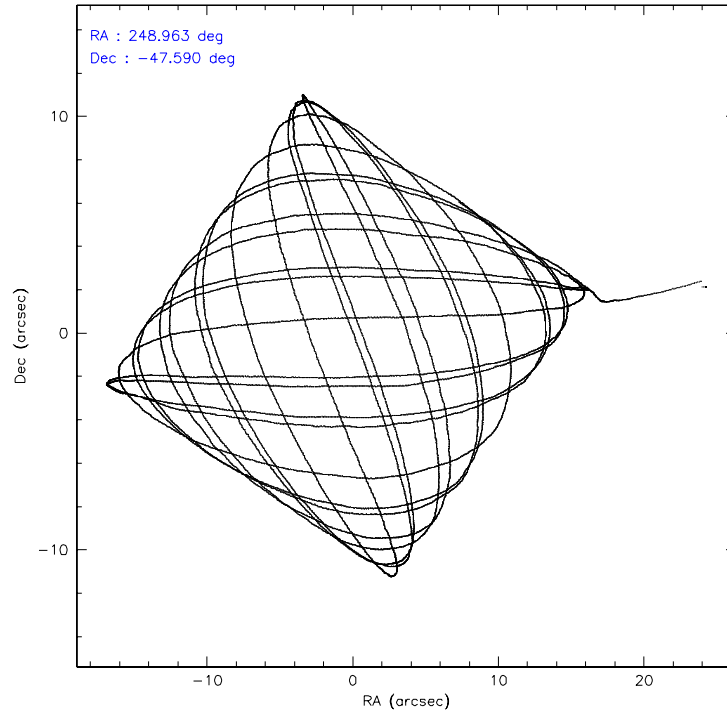
	ccd 2	ccd 3	ccd 5	ccd 6	ccd 7	ccd 8
level 1 events	71728	64788	88532	67528	65309	83800
rejected events	65097	58579	46180	60481	37542	65985
rejected %	90%	90%	52%	89%	57%	78%

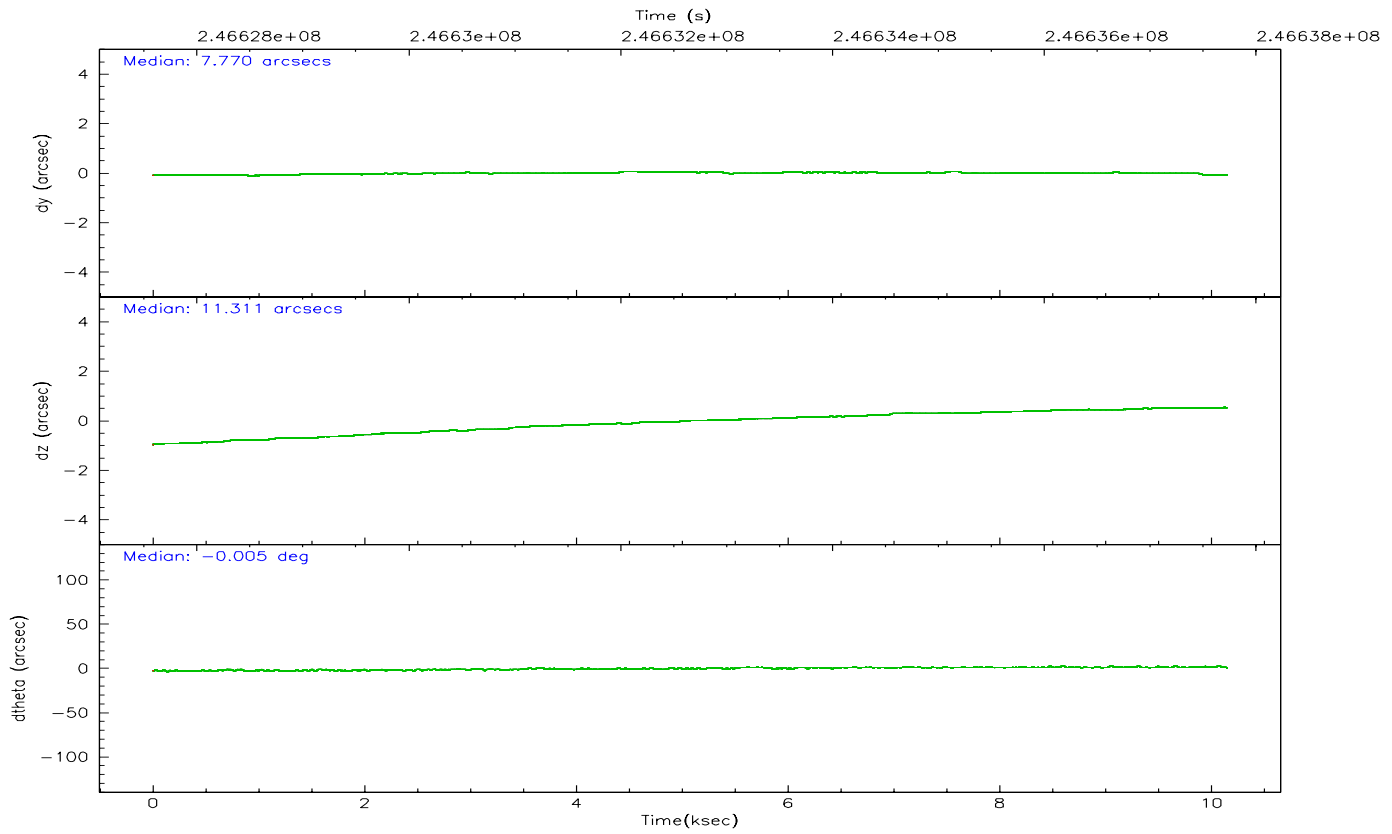
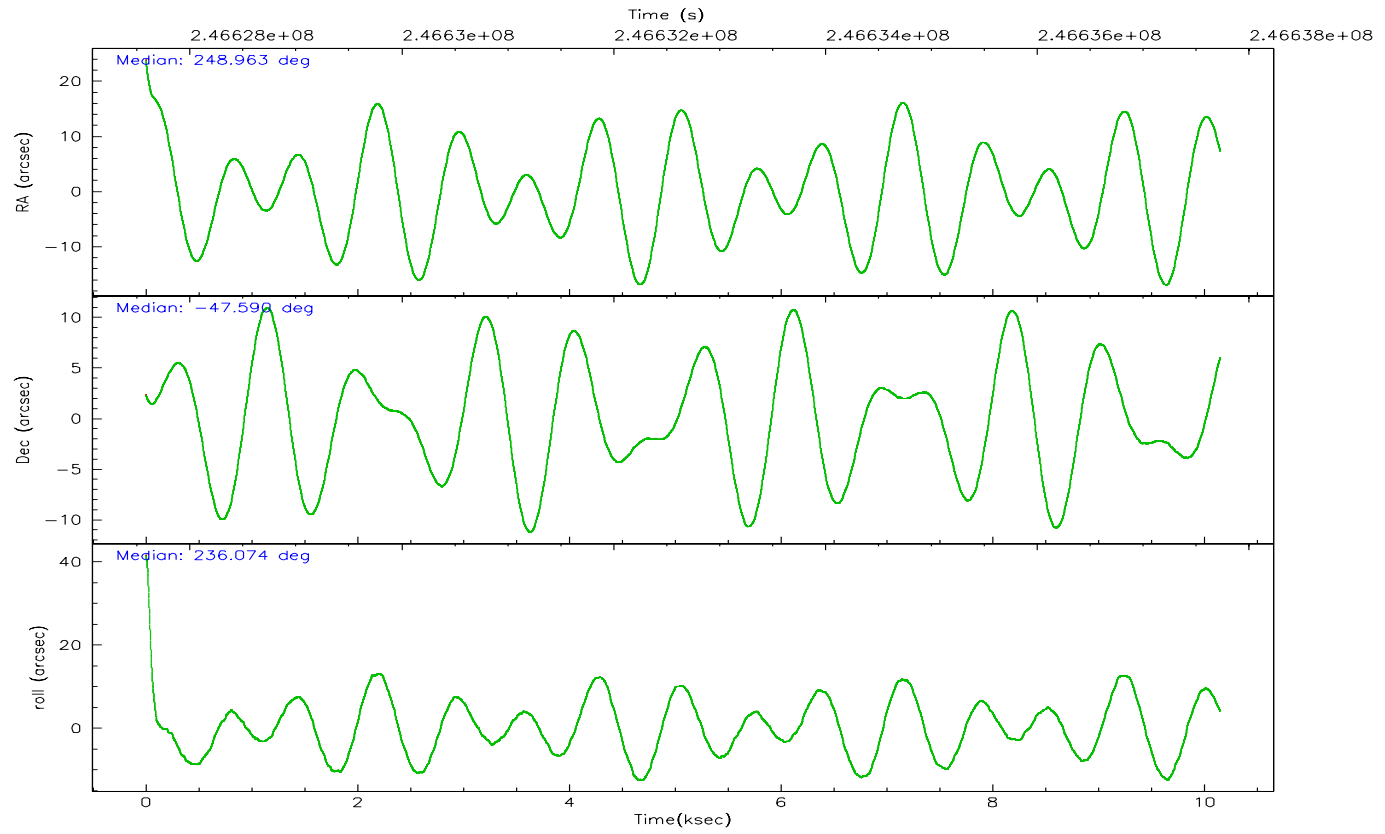
	ccd 2	ccd 3	ccd 5	ccd 6	ccd 7	ccd 8
grade 0 events	3121	2815	5751	3155	2025	5868
	4%	4%	6%	4%	3%	7%
grade 1 events	36	27	181	27	45	57
	0%	0%	0%	0%	0%	0%
grade 2 events	1579	1321	14578	1561	7871	4375
	2%	2%	16%	2%	12%	5%
grade 3 events	712	767	1193	766	1870	2060
	0%	1%	1%	1%	2%	2%
grade 4 events	735	754	1156	760	1846	1984
	1%	1%	1%	1%	2%	2%
grade 5 events	1835	2196	4861	2328	4988	3538
	2%	3%	5%	3%	7%	4%
grade 6 events	1181	1215	23364	1402	16580	5298
	1%	1%	26%	2%	25%	6%
grade 7 events	62529	55693	37448	57529	30084	60620
	87%	85%	42%	85%	46%	72%

2.2 Compared Parameters

Parameter	Planned	Actual	Parameter	Planned	Actual
Instrument	ACIS	ACIS	Obspar format version number	6	6
Detector	ACIS-235678	ACIS-235678	Obspar file type	PREDICTED	ACTUAL
Grating	NONE	NONE	Obspar update status	NONE	UPDATED
Data mode	VFAINT	VFAINT	On-chip summing requested	N	N
Observation mode	POINTING	POINTING	Subarray requested	NONE	NONE
Pointing RA	248.964960	248.9628509410434	Alternating exposures requested	N	N
Pointing Dec	-47.562717	-47.58988835439091	Primary exposure time	0.000000	3.2
Pointing Roll	235.923690	236.0787963943201			
SIM focus pos (mm)	-0.684267	-0.6828225247311905			
SIM defocus (mm)	0	0.001444936568705701			
SIM translation stage pos (mm)	-190.132523	-190.1400660498719			
SIM translation stage offset (mm)	0	0.00754346686406393			
Observation start time	246627736.184000	246626186.83385			
Observation start date	2005-10-25T11:41:12	2005-10-25T11:16:26			
Observation end time	246637736.184000	246638260.8219			
Observation end date	2005-10-25T14:27:52	2005-10-25T14:37:40			
Read mode	TIMED	TIMED			

2.3 Aspect



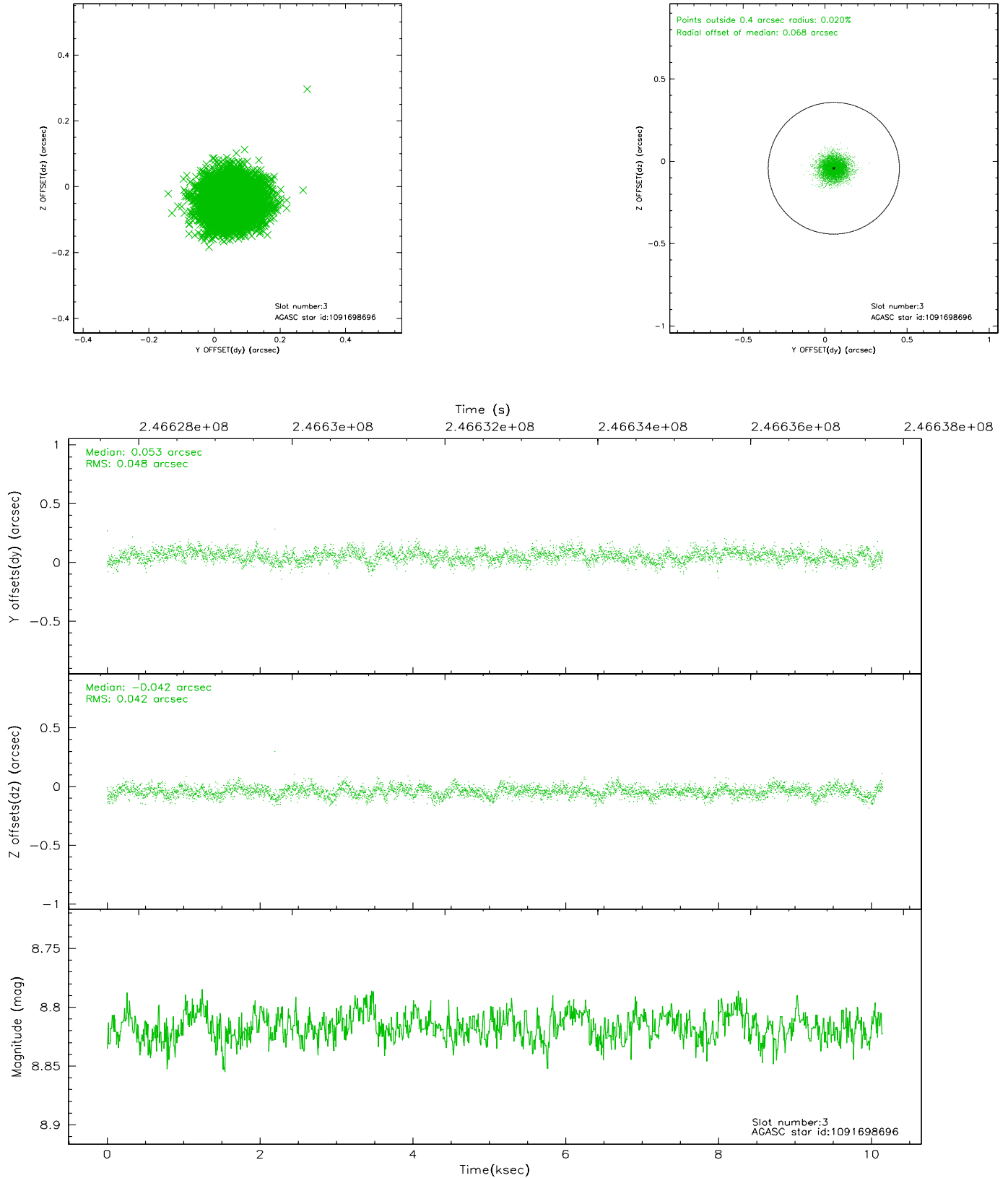


Slot Statistics

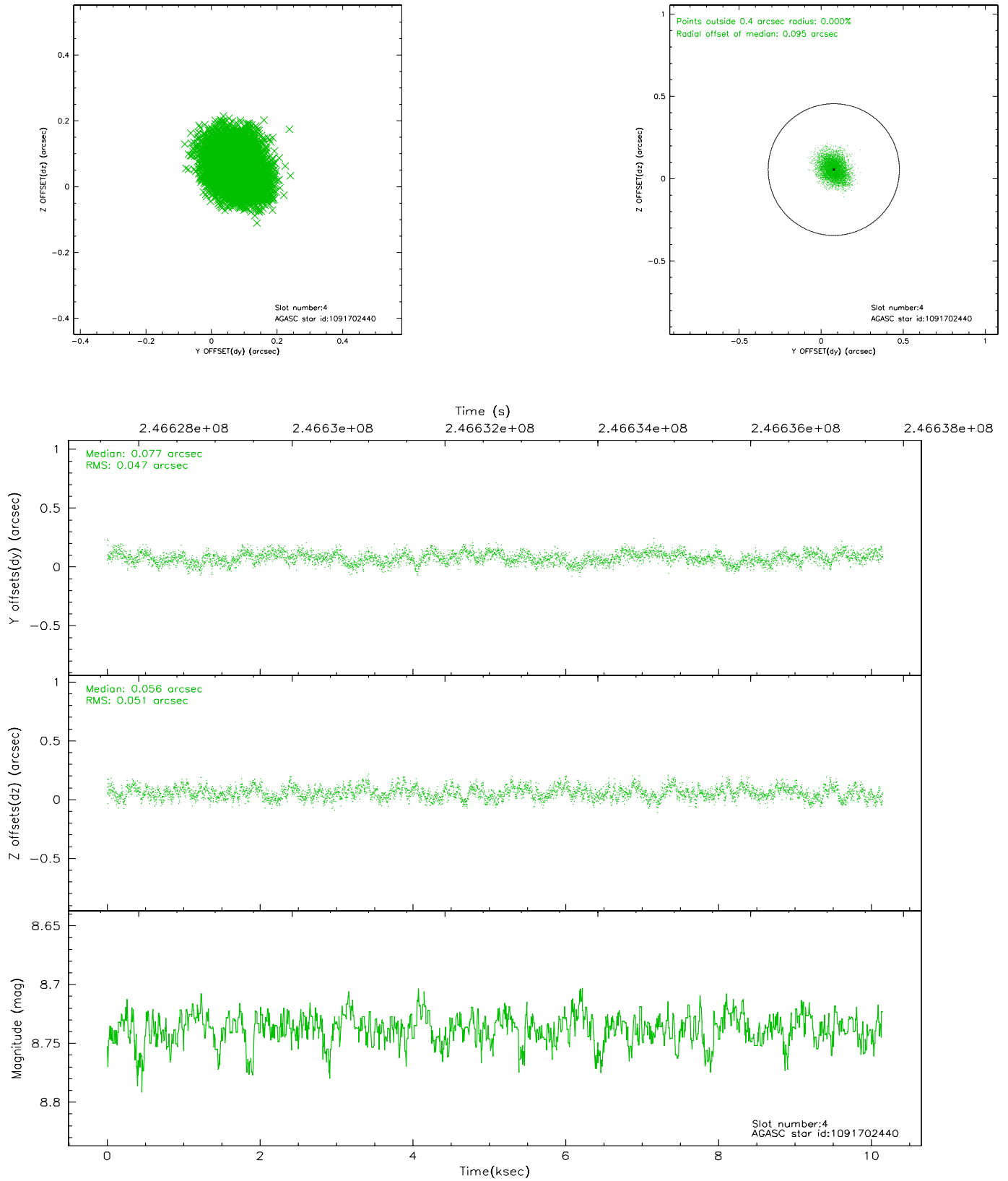
slot	status	id	mag	n_pts	med_dy	med_dz	dr1	dr2	ra	dec	mean_y	mean_z
0	FID	ACIS-S-1	7.18	2476	0.041	-0.063	0.015	0.033	0.000000	0.000000	935.53	-1728.21
1	FID	ACIS-S-5	7.23	2476	-0.051	0.029	0.012	0.017	0.000000	0.000000	-1813.25	168.92
2	FID	ACIS-S-6	7.35	2476	-0.010	0.043	0.015	0.024	0.000000	0.000000	400.49	813.47
3	GUIDE	1091698696	8.82	4951	0.053	-0.042	0.068	0.111	248.529134	-48.079711	2132.05	176.31
4	GUIDE	1091702440	8.74	4948	0.077	0.056	0.075	0.120	248.295809	-47.683380	1275.49	-1095.88
5	GUIDE	1091709768	7.71	4951	-0.112	0.043	0.054	0.090	249.435228	-47.706899	-204.88	1236.19
6	GUIDE	1091699360	7.44	4952	-0.089	-0.083	0.046	0.077	248.660725	-47.004364	-1244.75	-1744.13
7	GUIDE	1091699976	9.24	4946	0.070	0.030	0.083	0.136	249.617486	-47.776281	-242.03	1741.62

2.4 Star Slots

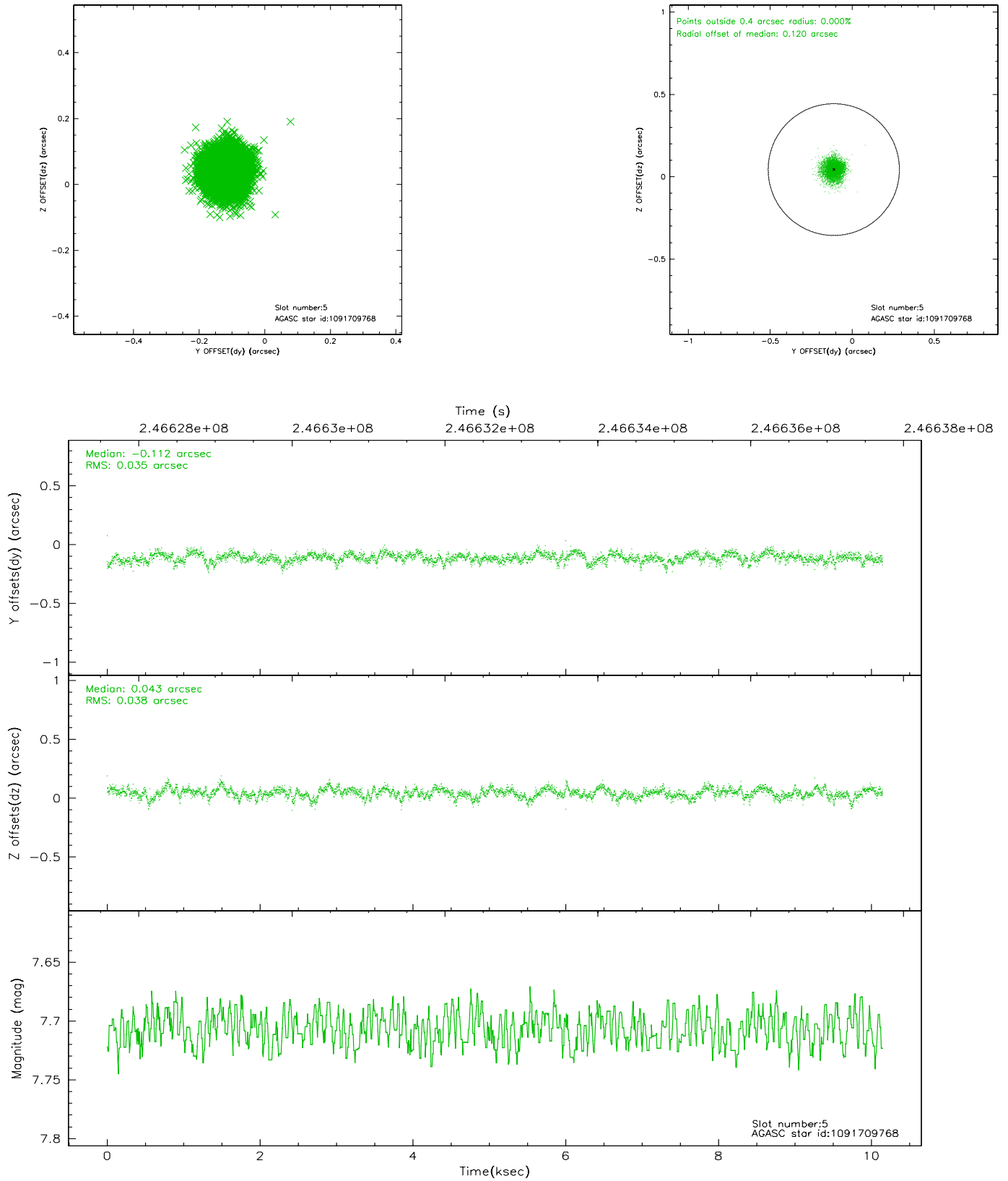
2.4.1 Slot 3



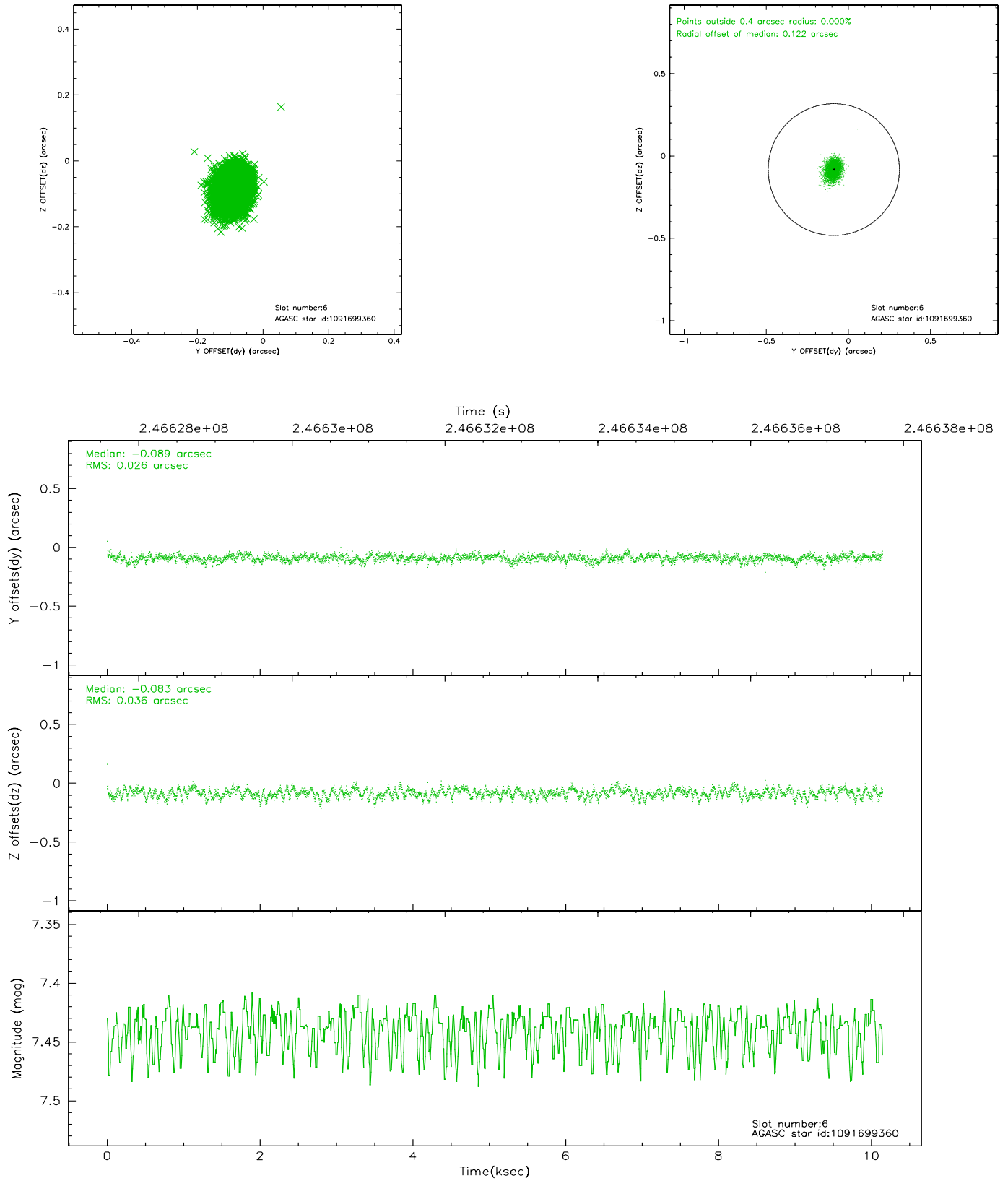
2.4.2 Slot 4



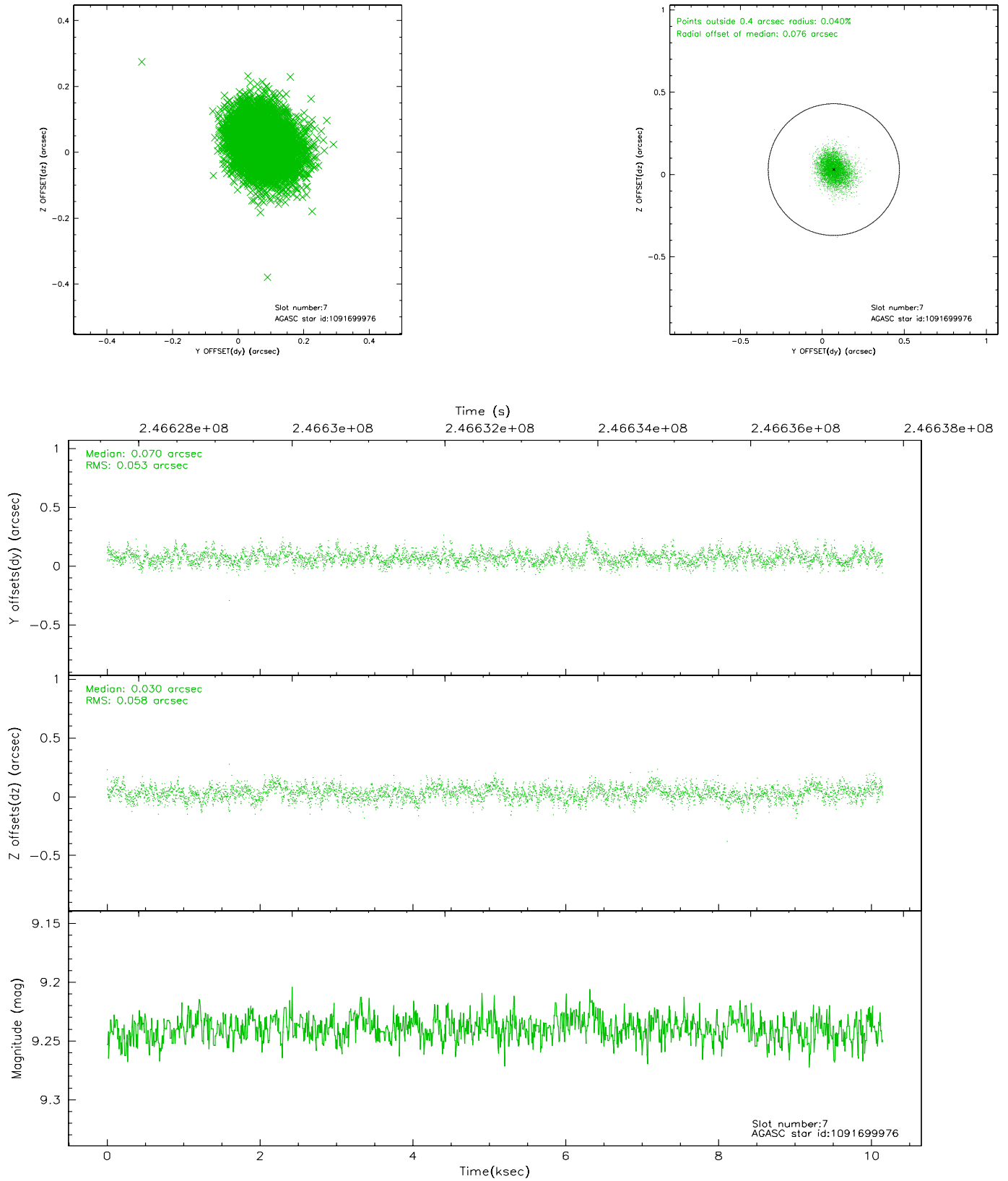
2.4.3 Slot 5



2.4.4 Slot 6

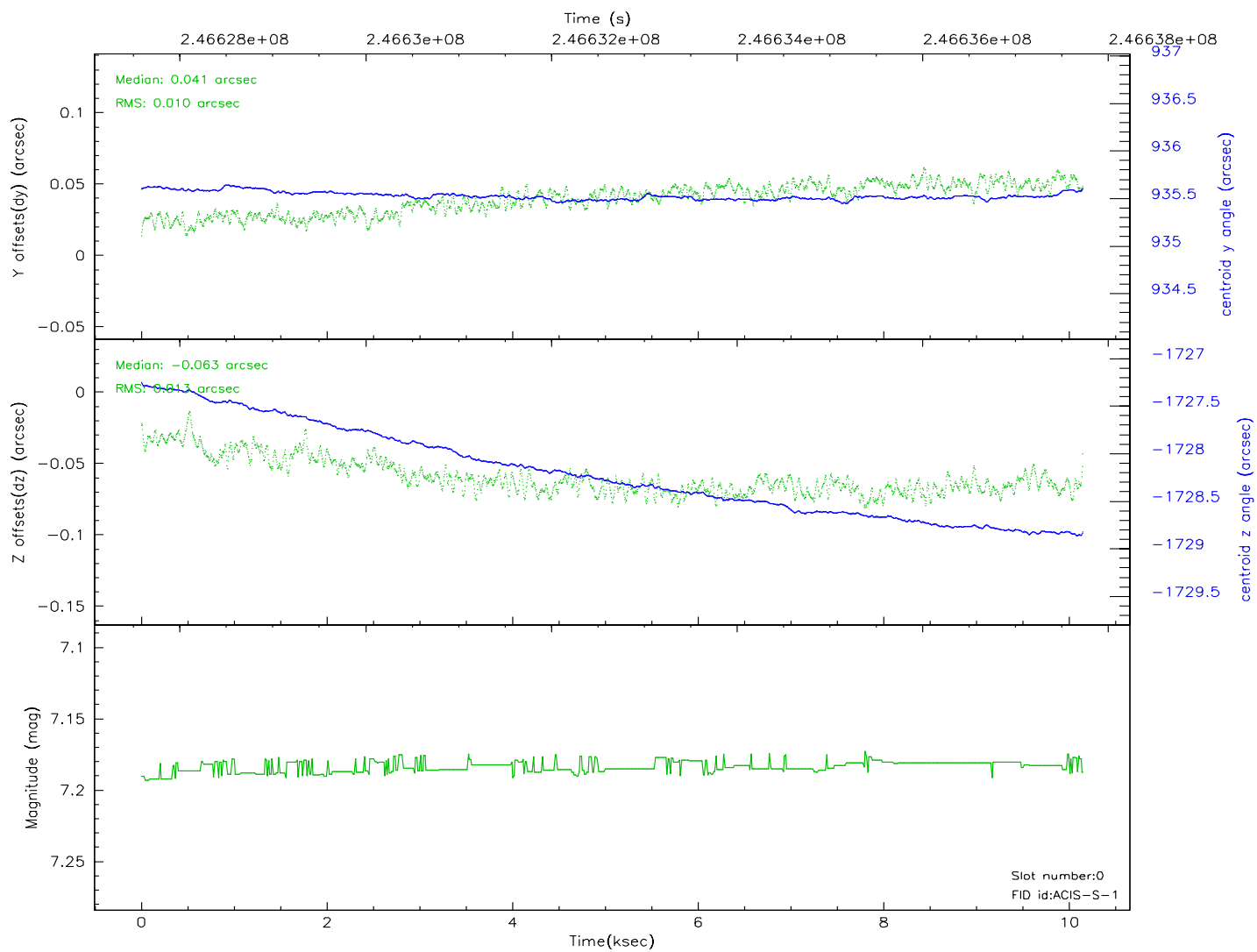
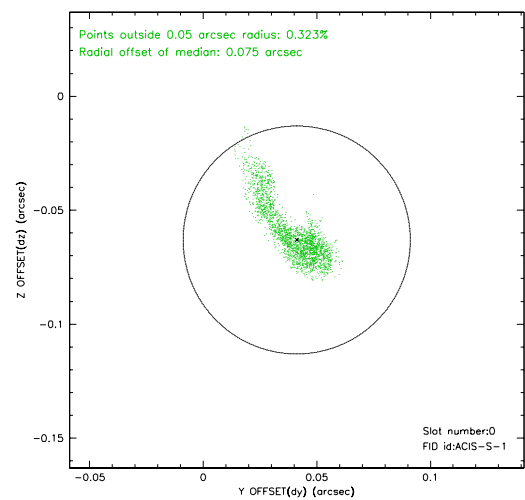
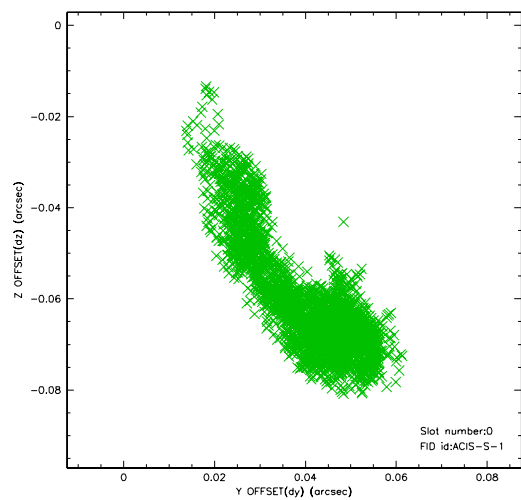


2.4.5 Slot 7

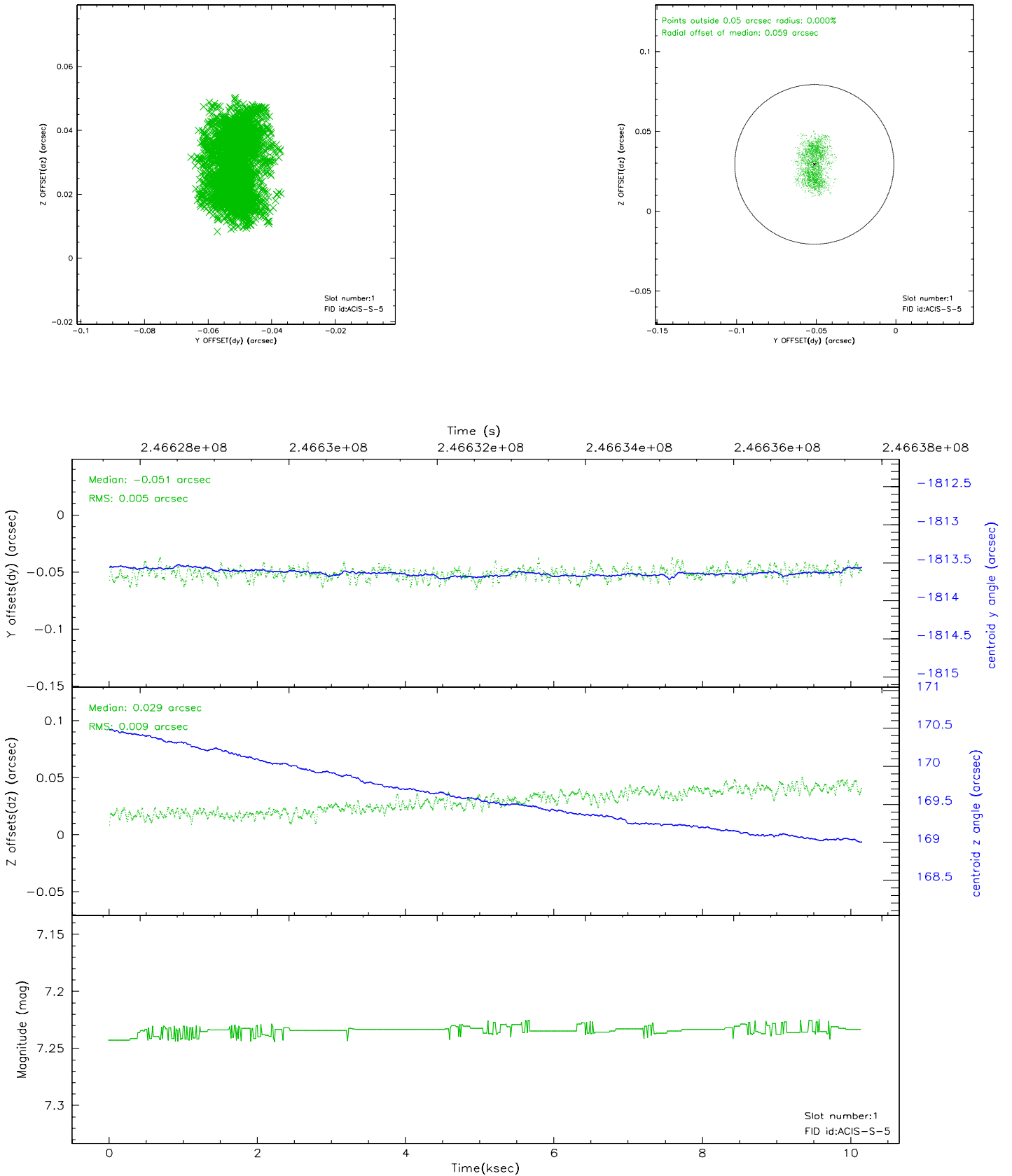


2.5 FID Slots

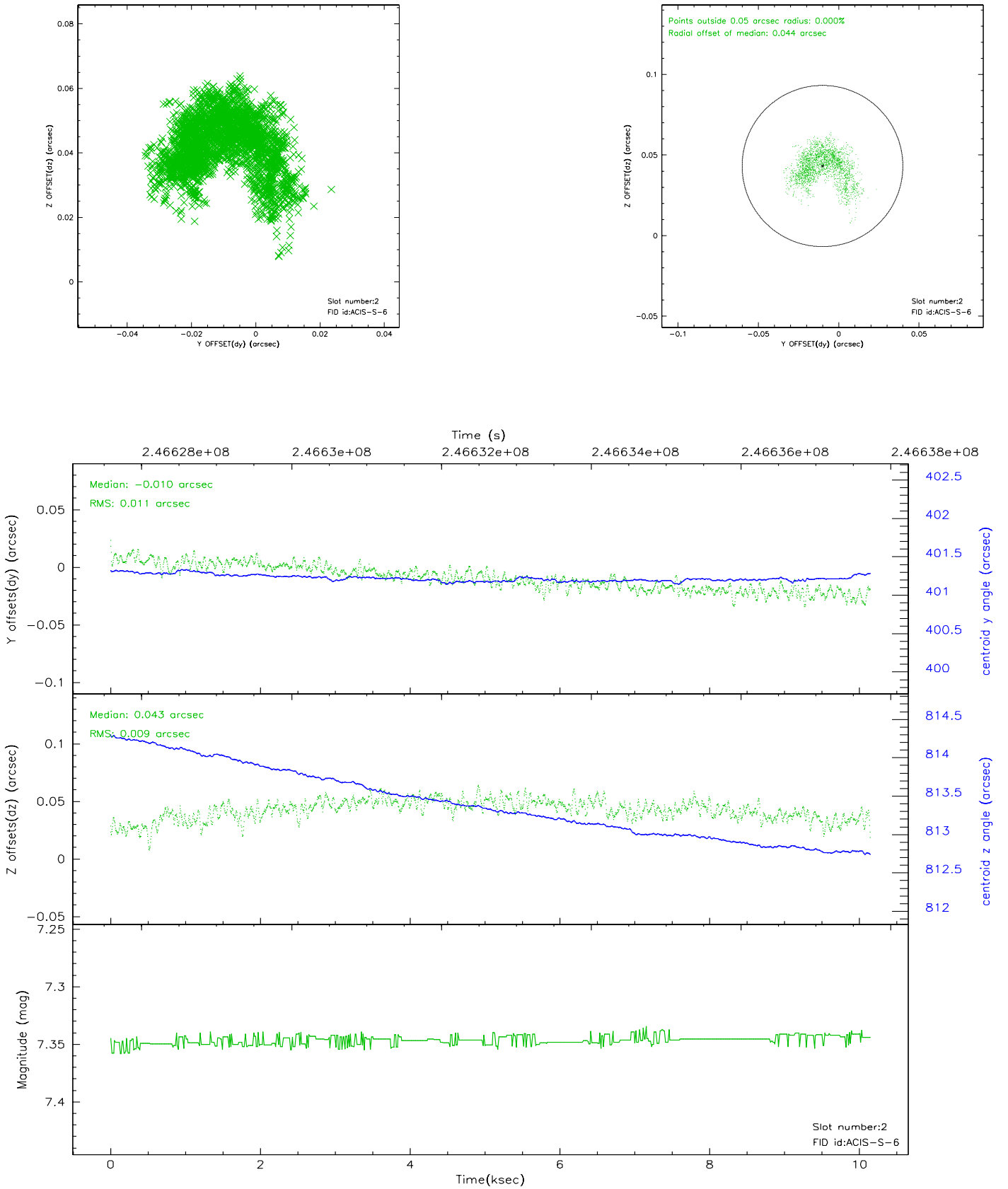
2.5.1 Slot 0



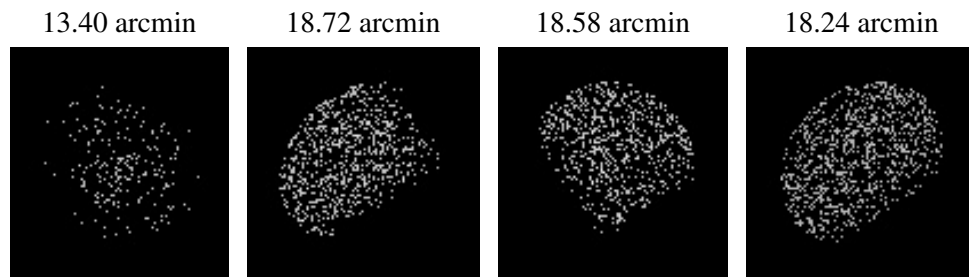
2.5.2 Slot 1



2.5.3 Slot 2



3 Point Sources



A Summary

A.1 Status

V&V Scientist	Beth Sundheim
V&V Date (YYYY-MM-DD)	2006.04.03
V&V Edition	1
V&V Disposition and Status	OK
V&V Charge Time	10.14399

A.2 Comments

Charge time:

Using existing charge time of 10.14399.